

Delaware Enterprise GIS
Introducing



Overview

- History of Data Distribution
- Enterprise Geospatial System
- Next Steps

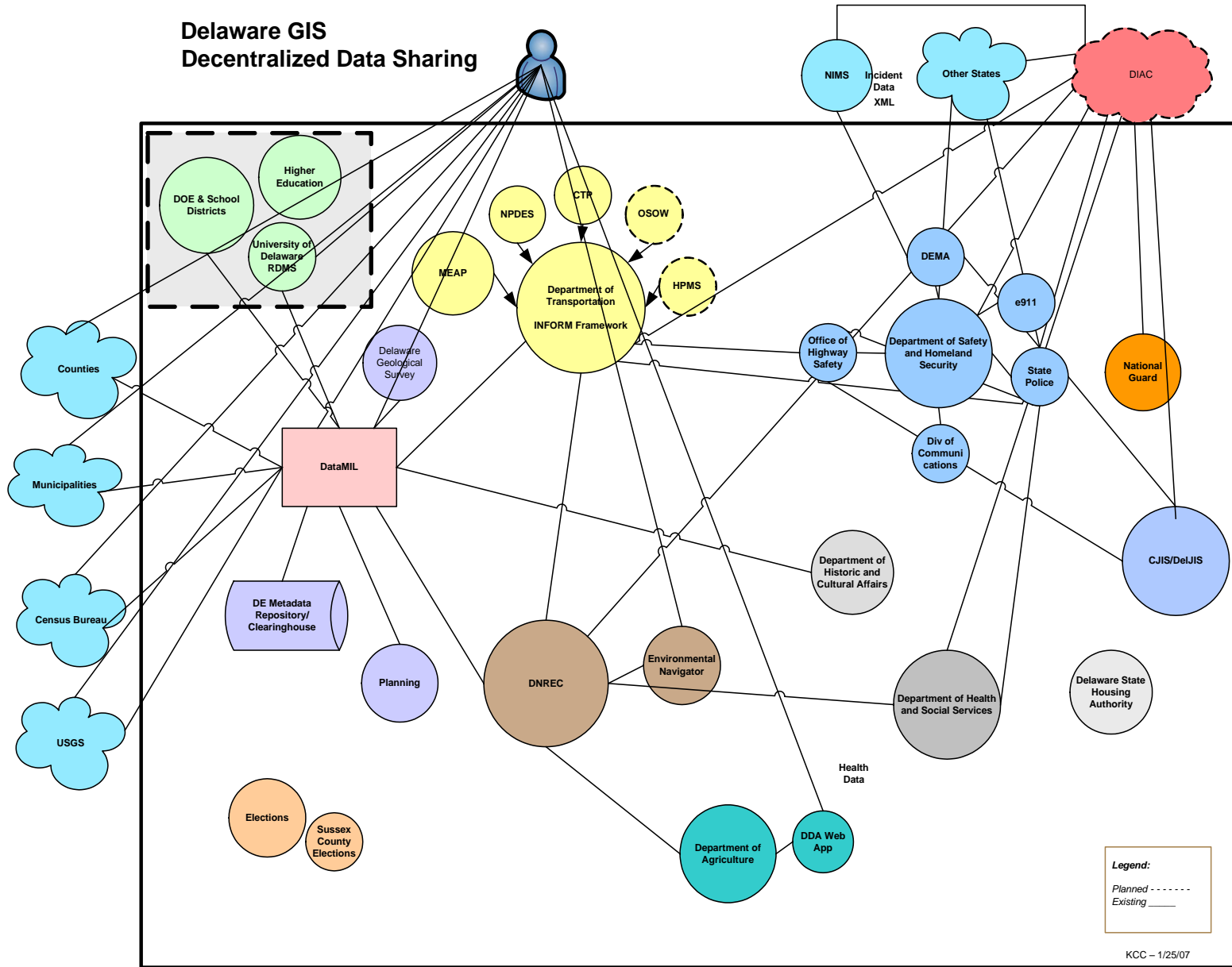
History of Data Distribution

- 1997 – Public GIS Data Release Pilot Project
 - Funded by NOAA-OCRM Grant and prepared by the Delaware Coastal Management Program
 - 3-CD release of State and County GIS data
- 2002 - Delaware DataMIL
 - Developed by the University of Delaware (RDMS) along with USGS
 - Pilot Project under the USGS National Map Initiative
 - Built using ArcIMS with an Oracle Database
 - Served Only Framework data
 - Won the John Wesley Powell Award – one of the first web based application of it's kind in the nation.
 - 2005-2006 – DataMIL application moved to be housed on the State Network but managed by the Delaware Geological Survey (DGS)
 - Co-located environment inside the State Network – funded by DGS

History of Data Distribution

- 2010 - Delaware Geospatial Data Exchange
 - Developed by DE Dept. of Technology and Information (DTI)
 - Data Dissemination Hub for geospatial data
 - More than just Framework Data
 - Zip and Ship
- 2013 – Delaware DataMIL retired
 - Budget Cuts to DGS (managing agency)
 - Obsolete technology
 - Failing hardware

Delaware GIS Decentralized Data Sharing



Legend:
 Planned - - - - -
 Existing _____

KCC - 1/25/07

Enterprise Geospatial Needs

- Delaware GIS Community wanted:
 - Single location for access to all geospatial data
 - County Data
 - State Agency data
 - Academia data
 - Web and Feature Service Access
 - Security for sensitive data
 - Ability to easily create maps and applications for our constituents

Delaware Working Together

- OSPC
- DTI
- DelDOT
- Homeland Security
- DNREC
- Agriculture & Forestry Service
- Historic & Cultural Affairs
- University of Delaware
- Delaware Geological Survey
- Education
- Health and Social Services
- New Castle County
- Kent County
- Sussex County
- State Housing Authority

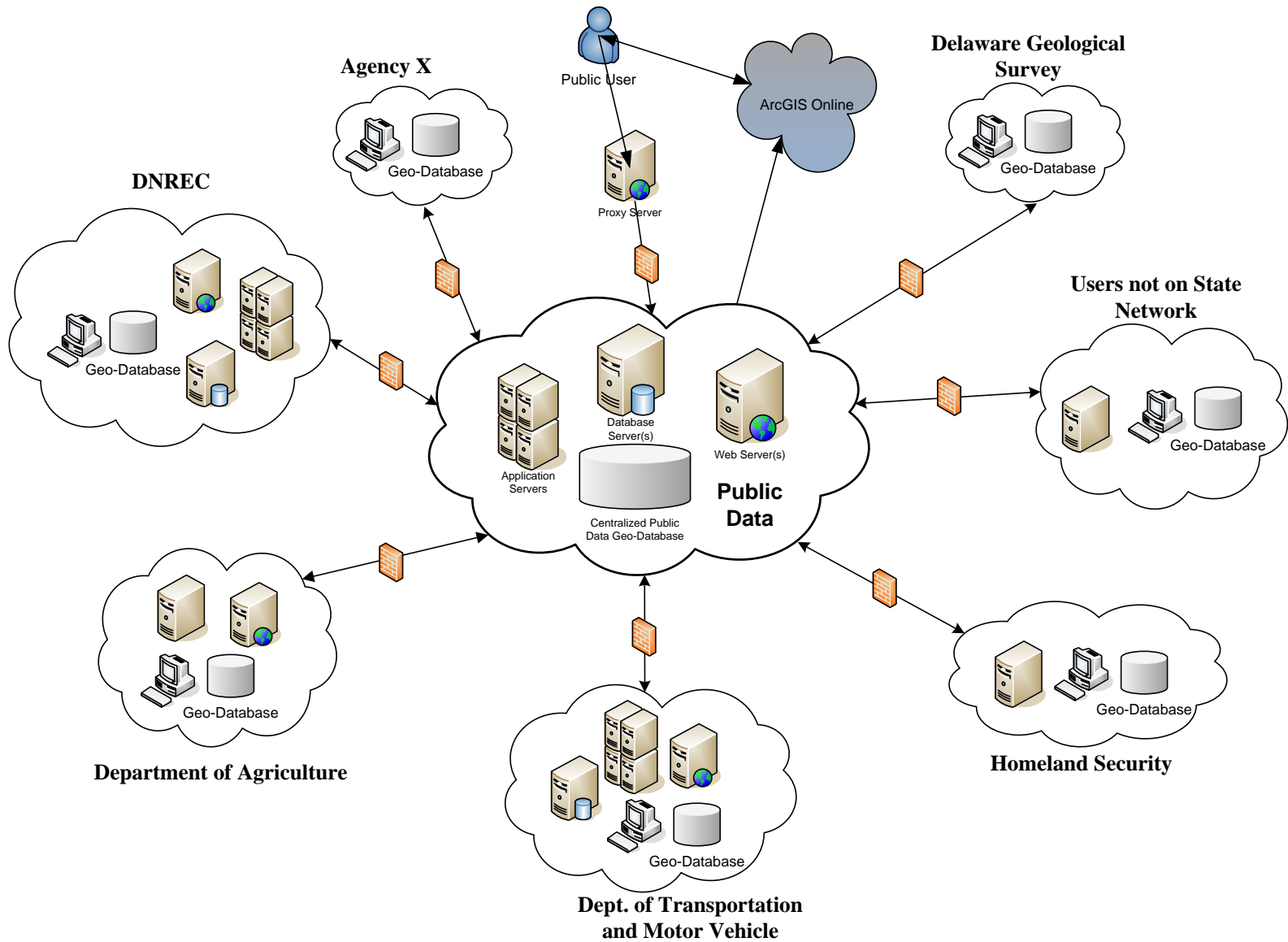
FirstMap History

- 2013
 - Esri facilitated Discovery Workshop to determine needs
 - Proof of Concept environment to demonstrate value.
- 2014
 - Production Enterprise GIS Infrastructure project initiated.
 - Production launched in September
 - Officially branded FirstMap

Enterprise Geospatial System

- System is housed on the State Network
- DTI hosted and managed
- Software
 - ArcGIS for Server 10.2.2
 - Enterprise Geodatabases on Oracle 12C
- Hardware
 - Virtual Environment
 - Windows Server 2012
 - Databases on Linux

Delaware Enterprise GIS Data Sharing Hub



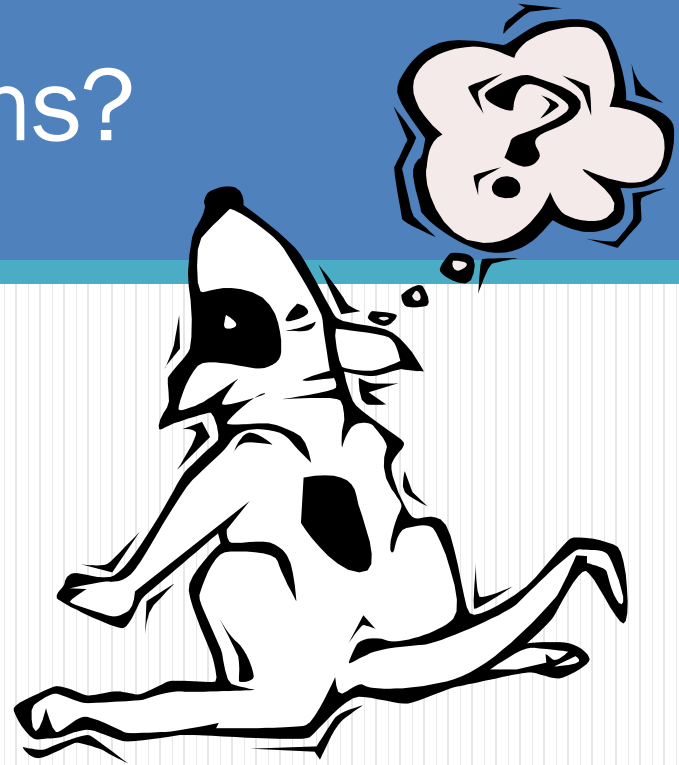
What's available today?

- Map services
- Image Services
- Feature Services
- [ArcGIS Online](#) for Organizations
 - Online Mapping access
 - Online Application access
 - Online Story Map access
 - Data Access
- [Website](#)
 - Instructions
 - Data Information
 - Story Map Gallery

What's coming next?

- Metadata
 - Small working group investigating GeoPortal by Esri as the metadata Solution for FirstMap
- Open Data – Esri product to allow discovery and download of data
 - Work in progress
- Geo-coder
 - Work in progress.
- Advisory Group
 - Develop Training Materials
 - Develop Best Management Practices
 - Develop User Agreements

Questions?



Contacts:

FirstMap@state.de.us

Miriam Pomilio, OSPC

Miriam.Pomilio@state.de.us

Kim Cloud, DTI

Kim.Cloud@state.de.us