



Welcome

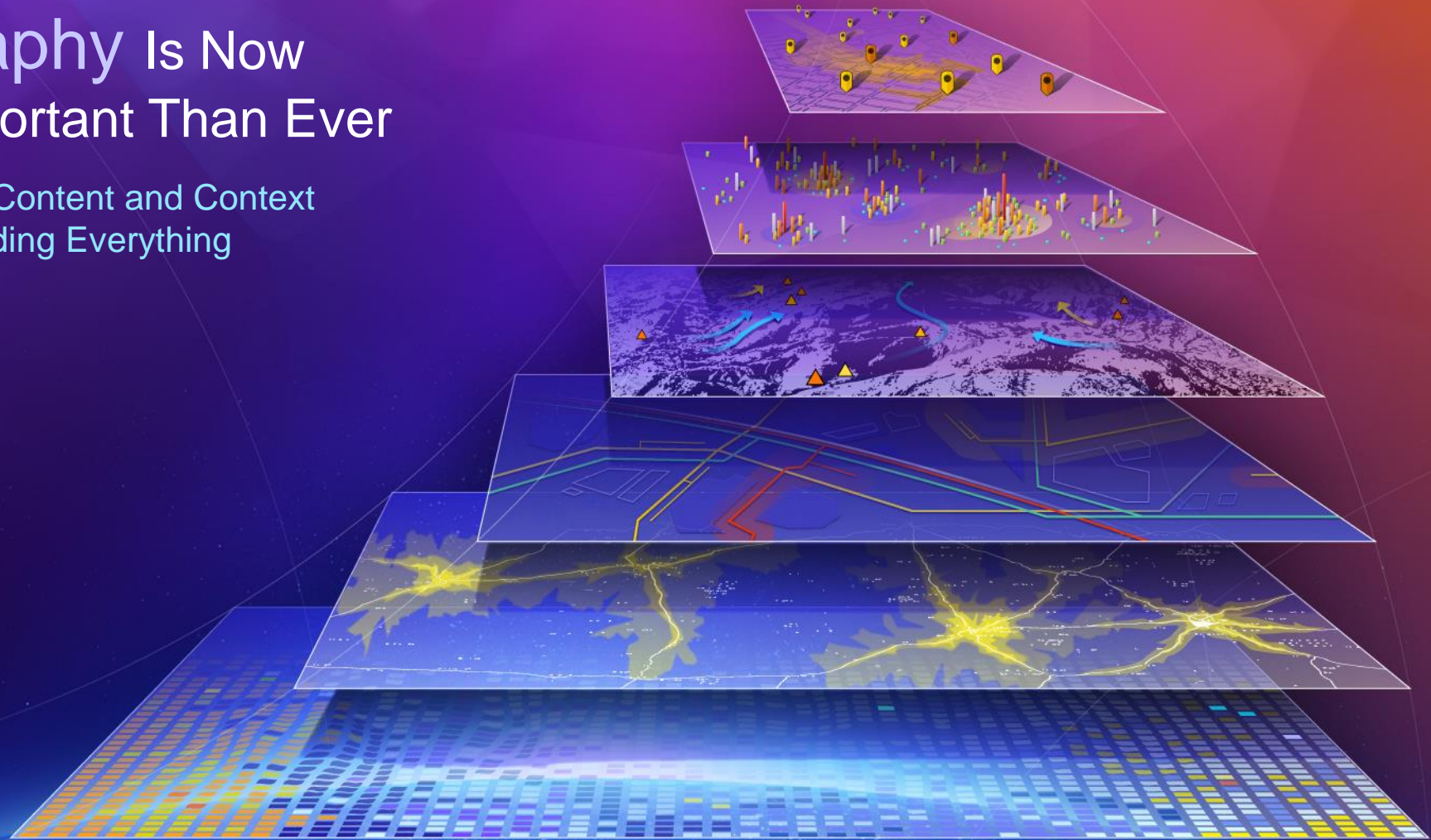
Esri Mid-Atlantic
User Conference

It's a Great Time to be a GIS Professional



Geography Is Now More Important Than Ever

Providing the Content and Context
for Understanding Everything



Your Work

Making a Difference

Story Maps

A Gallery of DCNR Story Maps

Story Maps serve as virtual visits to the wide variety of Pennsylvania natural resources. By combining intelligent web maps that incorporate rich multimedia with focused points of interest, Story Maps will take you to places you may never get to see, or inspire you to explore Pennsylvania with the story maps listed below.

- Pennsylvania Fall Foliage Viewing Locations
- Explore Pennsylvania's National Natural Landmarks
- A Tour of Old Growth Forests
- Notable Design and Architecture
- 20 Outstanding Geologic Features in Pennsylvania
- Growing Greener and Keystone Grants
- Pennsylvania Waterfalls

Sea Level Rise Inundation

The rising and accelerating of water over landmasses is a major concern for the population, locations, and infrastructure of coastal regions. This map is intended to provide a map to show the possible effects of sea level rise on the Pennsylvania coastline. The map shows the coastline of the Commonwealth of Pennsylvania and the Delaware Bay. The map is intended to show the possible effects of sea level rise on the Pennsylvania coastline. The map shows the coastline of the Commonwealth of Pennsylvania and the Delaware Bay. The map is intended to show the possible effects of sea level rise on the Pennsylvania coastline.

@visitParks

@FirstMap

Data Driven Government

A collage of images illustrating data-driven government. It includes a map with a purple highlighted area, a bar chart, a pie chart, and a photograph of a public meeting or presentation with an audience seated at tables.

@PhilaGIS

Open Data

Two screenshots of open data portals. The left one is MDiMap (Maryland's Mapping & GIS Data Portal) showing a search bar and a map interface. The right one is District of Columbia Open Data, showing a search bar, a map, and a donut chart for DC Parks with a legend and data categories.

@MDiMap

@OCTODC

Citizen Science

A map titled "Litter Code Violation Notices - 2013 By City Council District" showing 10 districts with violation counts: 1 (341), 2 (482), 3 (883), 4 (3150), 5 (4875), 6 (1316), 7 (4885), 8 (3127), 9 (2560), and 10 (341). To the right is a photograph of plastic bottle litter. Below is a video player showing a citizen scientist, Kelly O'Day, holding a plastic bottle.

@dkod

Web GIS Transforms How GIS Professionals Work

Improving How We Organize and
Share Our Knowledge



... Improving Our Productivity

ArcGIS Provides a Common Platform

Supporting Many Audiences

Knowledge Workers
and Executives



Developers



GIS Professionals



ArcGIS

Quality

Developers
Open Data
Spatial Analysis
Location Analytics
Solution Templates
Editing
Real-Time
Data Management
Standards
Geodesign

Themes

Administration
Big Data
Cloud
Security
Imagery
Mapping
Identity
Usability
Quality
Performance
Enterprise Integration
Interoperability
3D
Apps



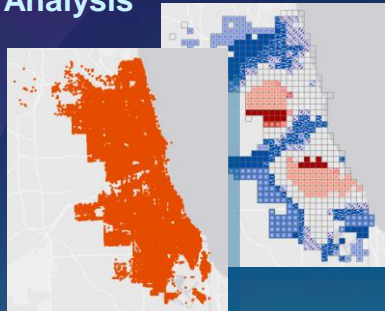
Spatial Analysis

Supporting Demands for
Better Understanding

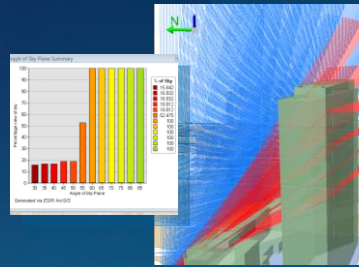
Online

Desktop

Space-Time
Pattern Analysis



3D Analysis



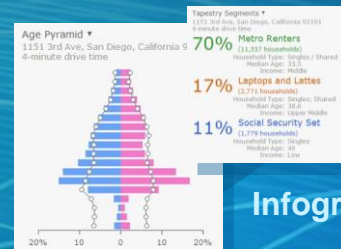
Flow Visualization



Improved Modeling

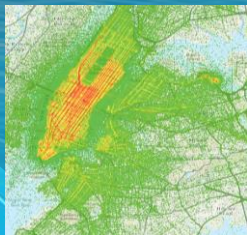


Multidimensional Data

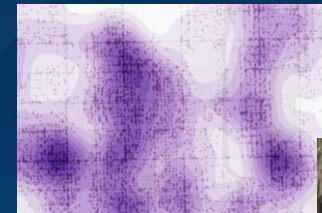


Infographics

Big Data



Interpolation



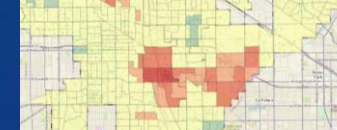
Density

Route Optimization



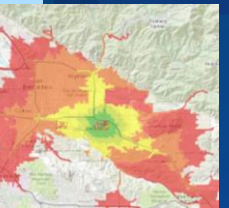
Buffer

Overlay



Hot Spots

Terrain



Drive-Time Areas

Find Nearest

Aggregation

GeoEnrichment

Advancing the Science of Geography

3D

Enabling Visualization and Analysis on Desktops, Browsers, and Devices

- Web Scenes
- Lidar Analysis
- Rule-Based Symbology
- Editing and Designing



CityEngine

Content

A Ready-to-Use
Living Atlas

Landscape

Basemaps

Imagery

Demographics



GeoEnrichment

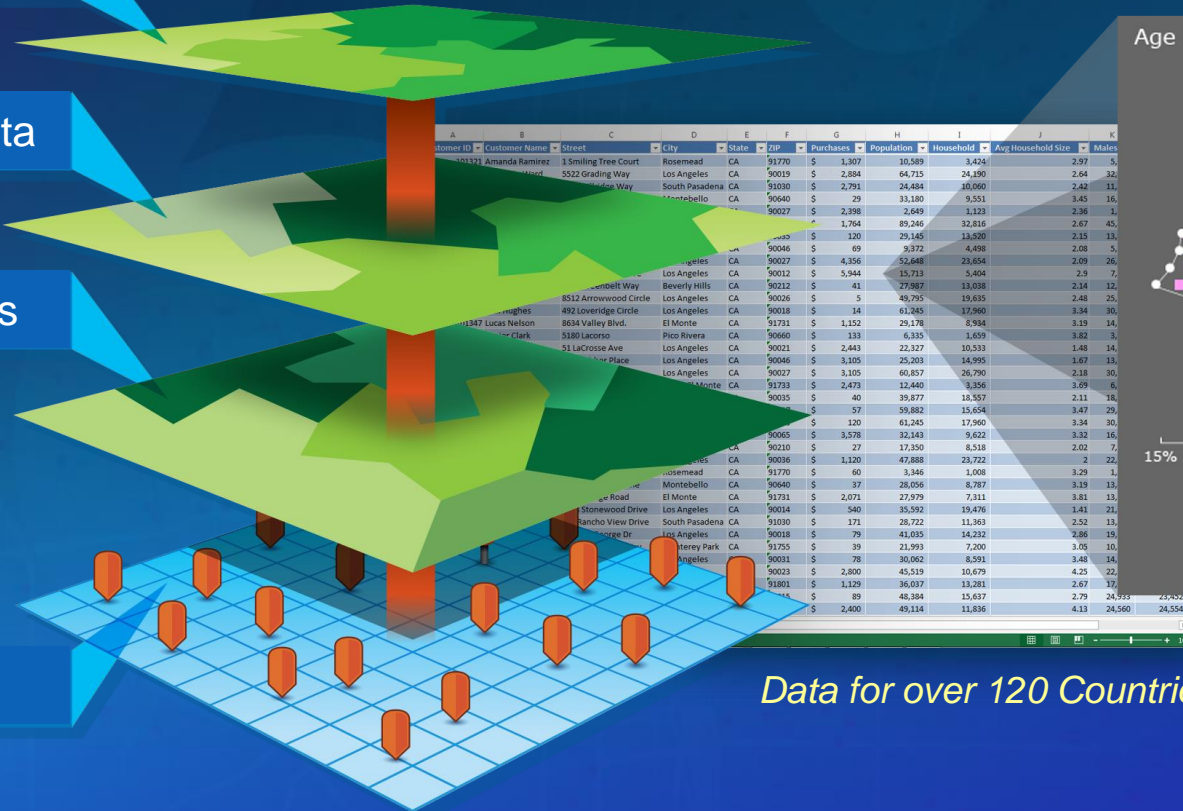
An Online Service for
Appending Map Data to Your Data

Business Data

Landscape Data

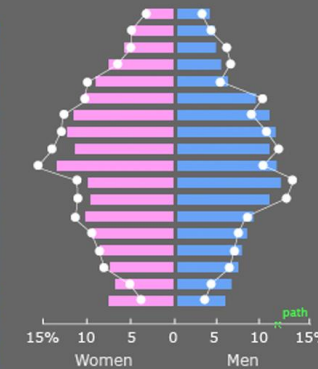
Demographics

Your Data



Age Pyramid

MANY Men, age 25-29
FEW Men, age 85+



Dots show comparison to
Dots show comparison to

Contra Costa County

Data for over 120 Countries

Available across the Platform

GIS Apps

Included as Part of
Online, Server, and Desktop

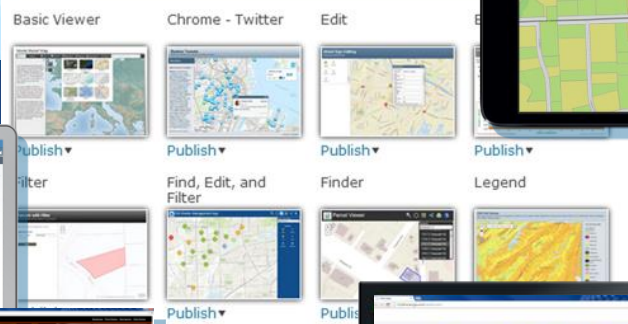


Support Multiple Devices

Story Maps



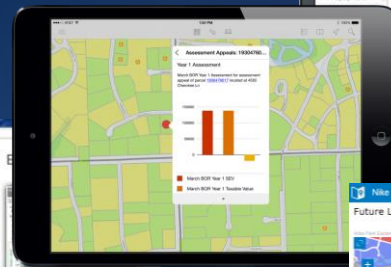
Web
Templates



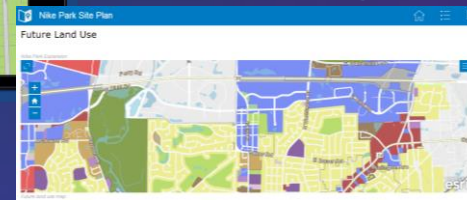
Dashboard



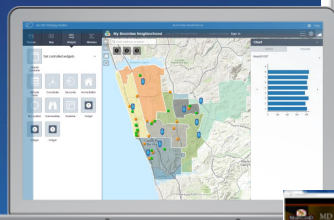
Explorer



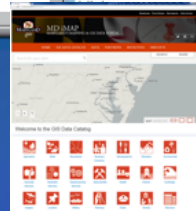
Briefing Book



Web
AppBuilder



Open Data



Collector



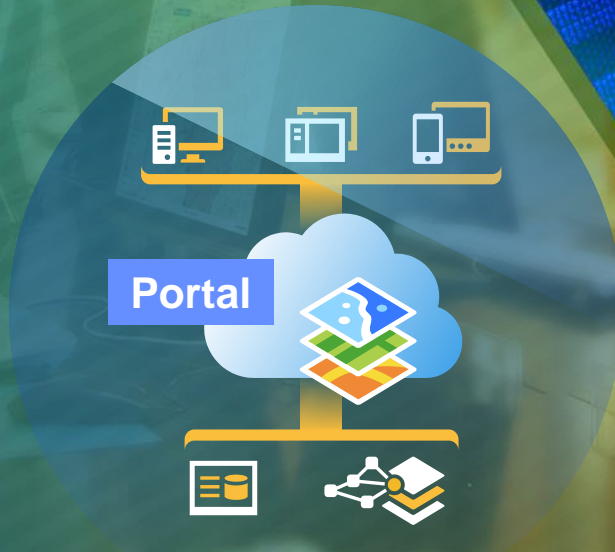
Online - Offline Support

Immediately Deployable and Easily Configured

ArcGIS

An Integrated System

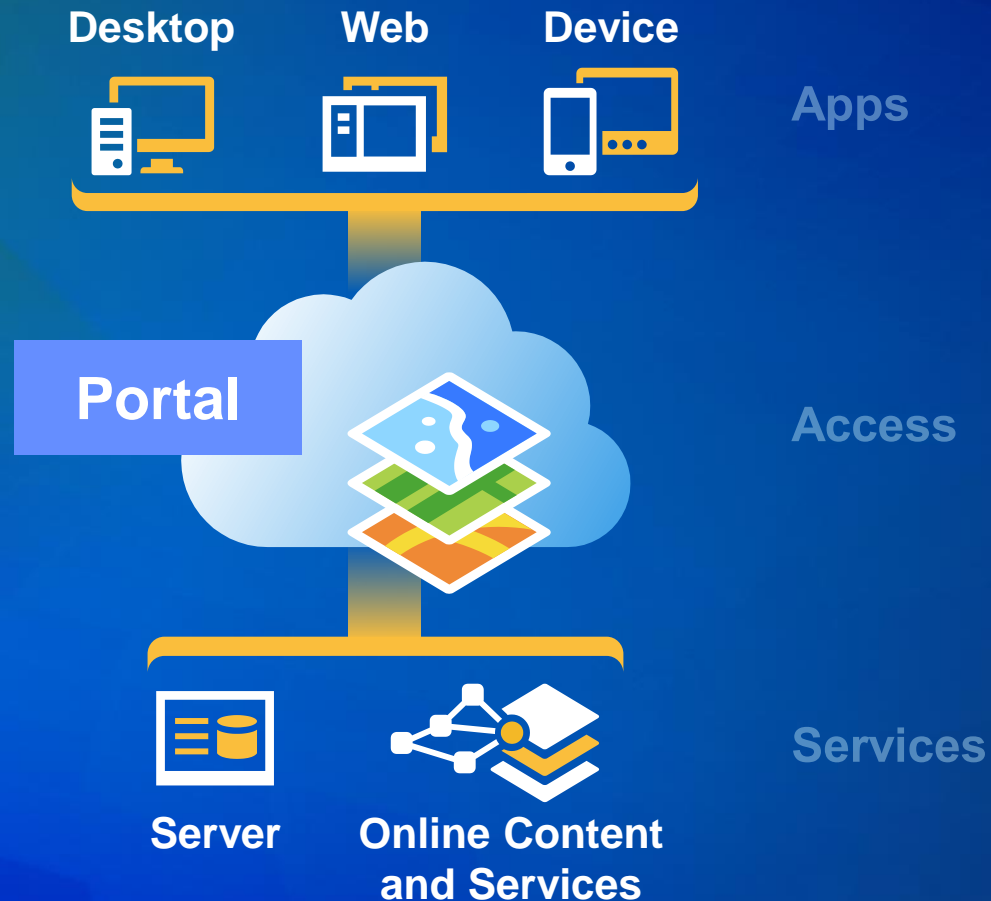
Desktop
Portal
Apps
Content
Server
Online



ArcGIS

An Integrated
Web GIS Platform

Providing Mapping, Analysis, Data
Management, and Collaboration



*Available on the Open Web . . .
. . . and On-Premises*

Desktop

Professional GIS
Applications



Side-by-Side

Providing Mapping, Visualization, Editing, and Analysis



10.3

New

- Intuitive
- Fast (64 bit)
- Multiple Layouts
- 2D / 3D
- Create Web Maps
- Tasks and Projects

Improved

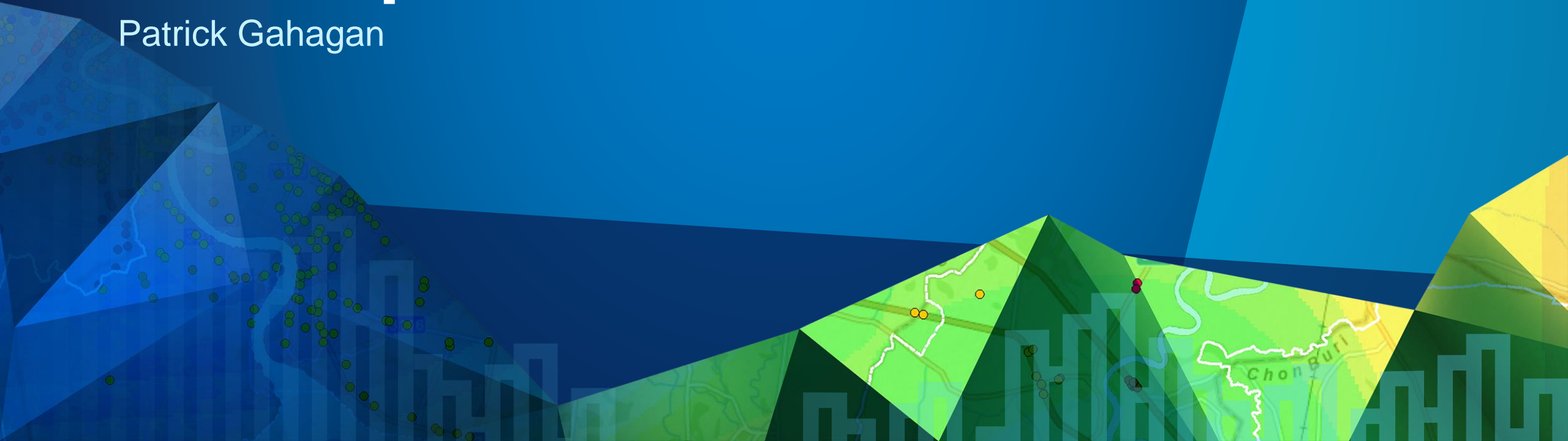
- Quality
- Performance
- Cartography
- Analytics
- Image Processing
- Security (PKI)



*Continued Support . . .
. . . with Dramatic Improvement*

ArcGIS Pro: Desktop GIS Transformed

Patrick Gahagan



Desktop

Includes ArcGIS Online



- Unlimited Web Mapping
- Data Hosting
- Living Atlas
- Many Apps

... Extending Your Capabilities

Regular Releases Bring
Continual Enhancements

- Improved Mapping
- Administration & Reporting
- Custom Roles
- New Applications

2014



March

July

September

December

Presentations

Open Data

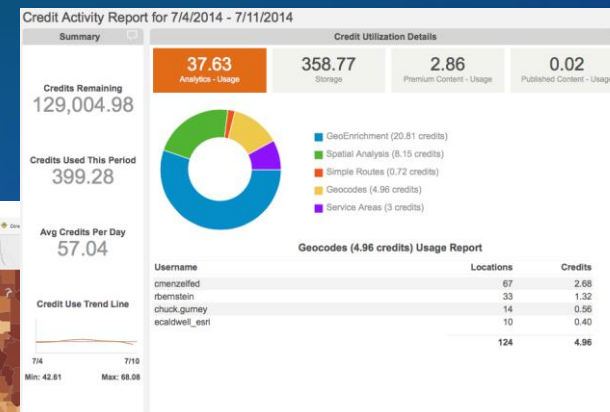
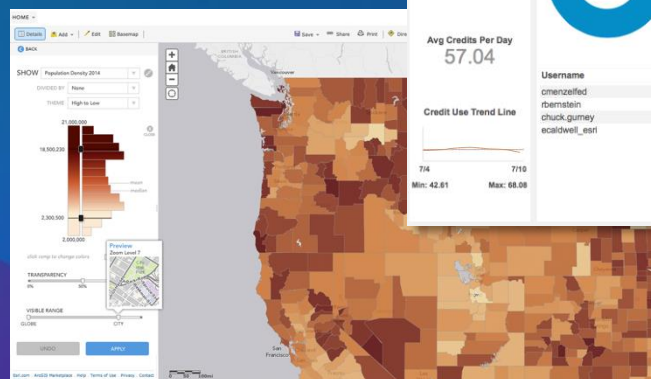
Labels

Single
sign-onActivity
Dashboard

FISMA

Analysis

Offline



Online

Comes with Applications



Collector for ArcGIS



Operations Dashboard
for ArcGIS



Explorer for ArcGIS

Excel

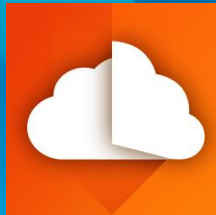
PowerPoint

SharePoint



Web AppBuilder
for ArcGIS

Ready-to-Use
Apps



ArcGIS Open Data

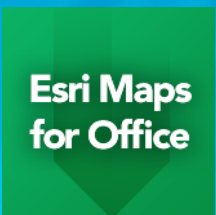
Salesforce

Esri Maps
For...

Dynamics
CRM



Story Maps for ArcGIS



Esri Maps for Office



ArcGIS Templates

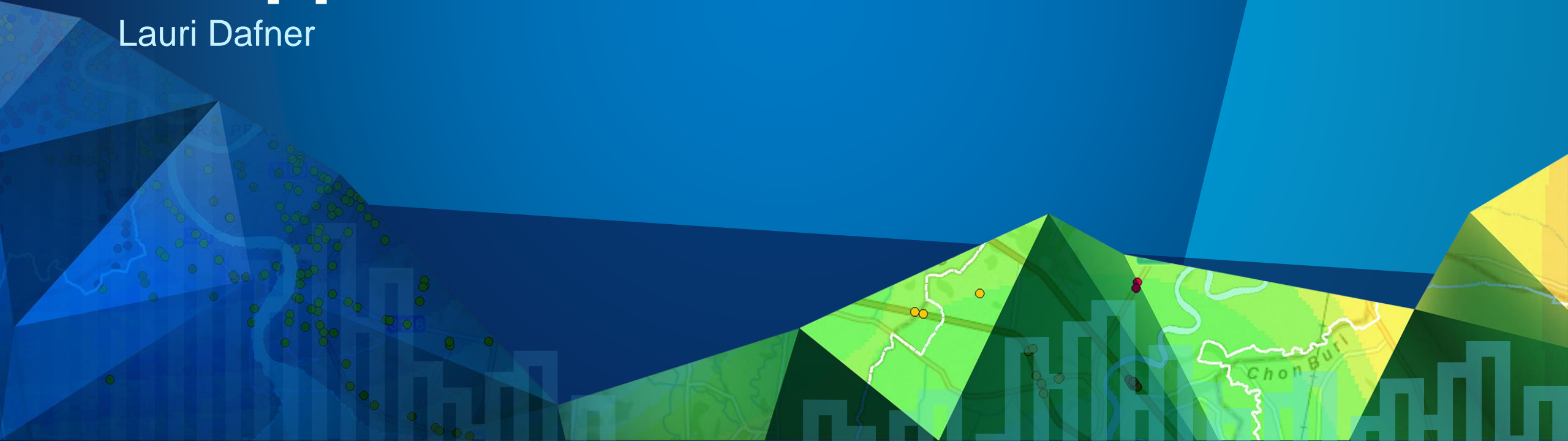
MicroStrategy

Cognos

SAP

Powerful Mapping and Analysis in Applications We All Use

Lauri Dafner



Online

Comes with Applications



Collector for ArcGIS



Operations Dashboard
for ArcGIS



Explorer for ArcGIS

Excel

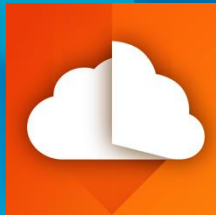
PowerPoint

SharePoint



Web AppBuilder
for ArcGIS

Ready-to-Use
Apps



ArcGIS Open Data

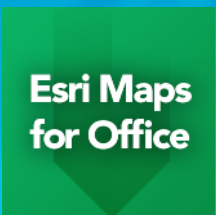
Salesforce

Esri Maps
For...

Dynamics
CRM



Story Maps for ArcGIS



Esri Maps for Office



ArcGIS Templates

MicroStrategy

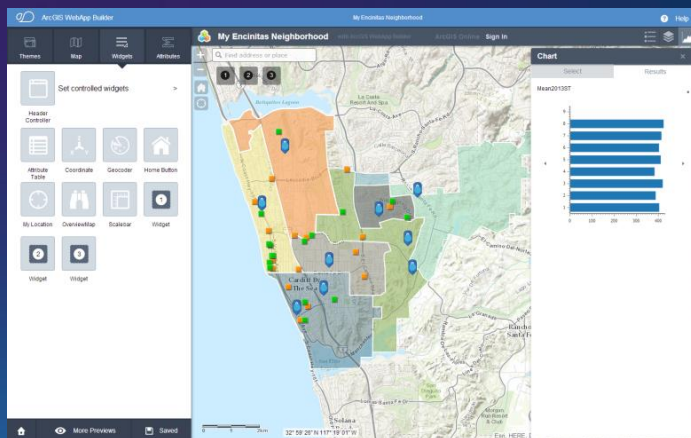
Cognos

SAP

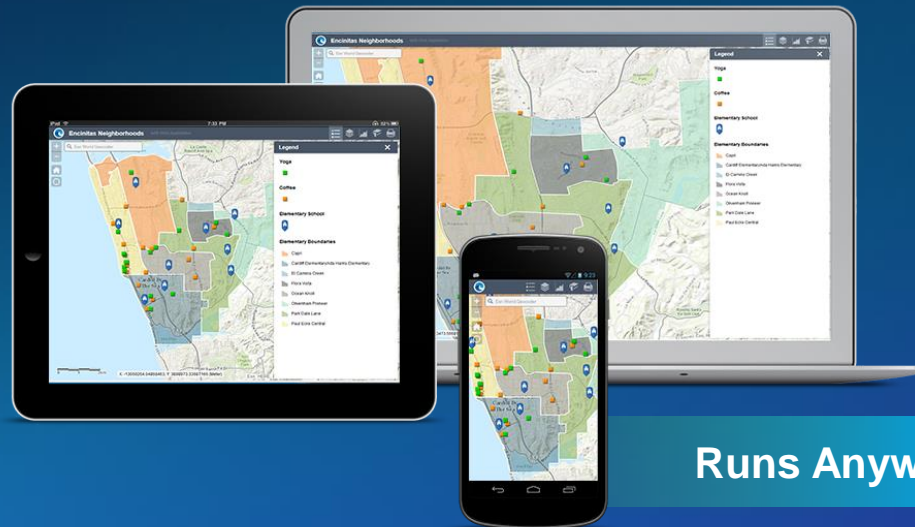
Web AppBuilder

Cross-Platform
Framework for Web Apps

Builder

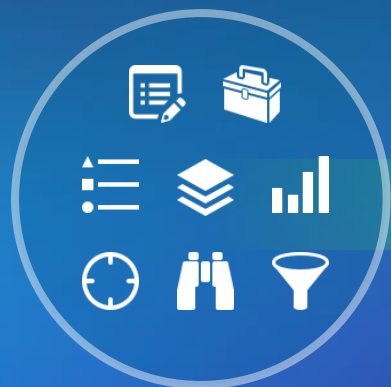


Ready-to-Use App



- HTML5 — JavaScript
- Easily Configurable
- Server and Online

Runs Anywhere

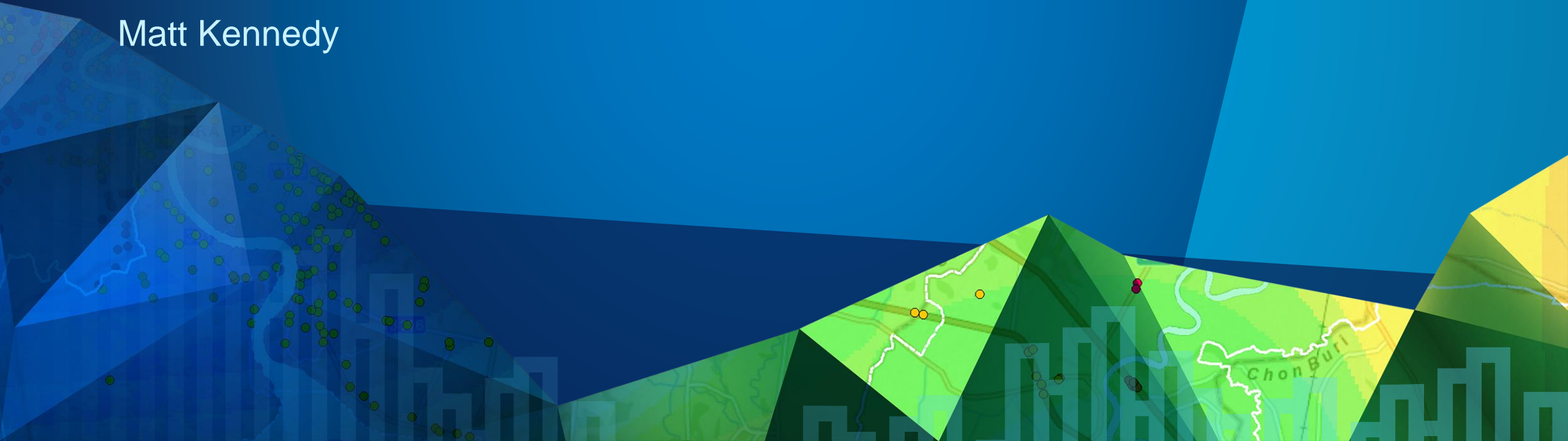


Many Widgets

*Easy App Development . . .
. . . across the Enterprise*

Creating Web Applications That Meet User Needs

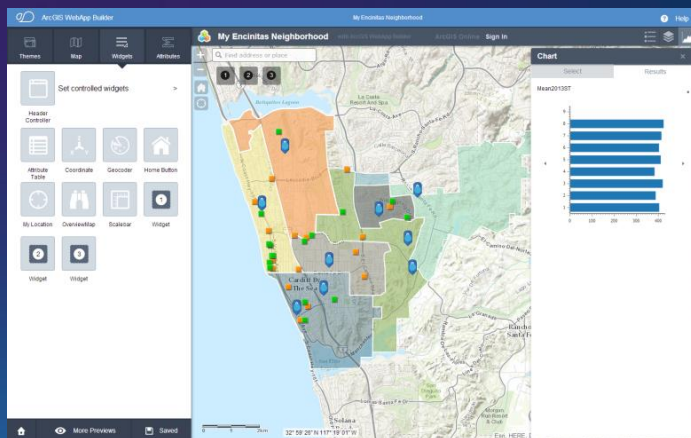
Matt Kennedy



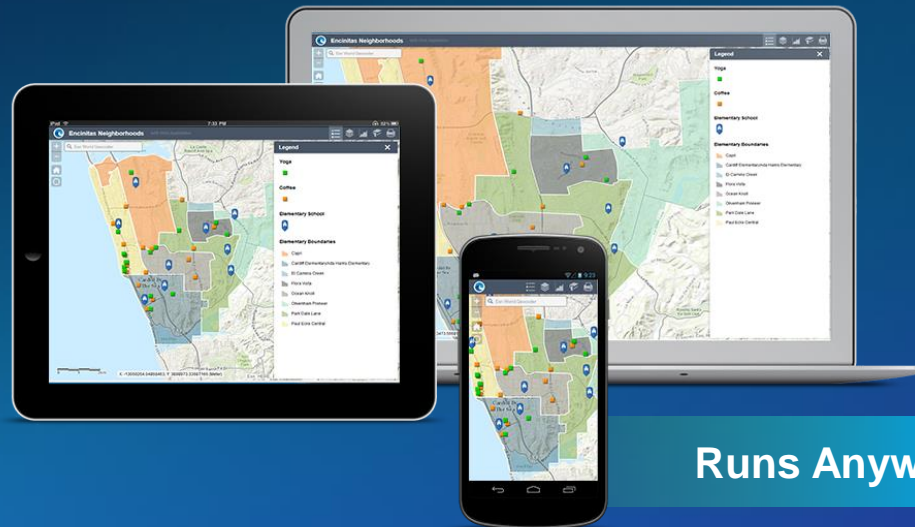
Web AppBuilder

Cross-Platform
Framework for Web Apps

Builder



Ready-to-Use App



- HTML5 — JavaScript
- Easily Configurable
- Server and Online

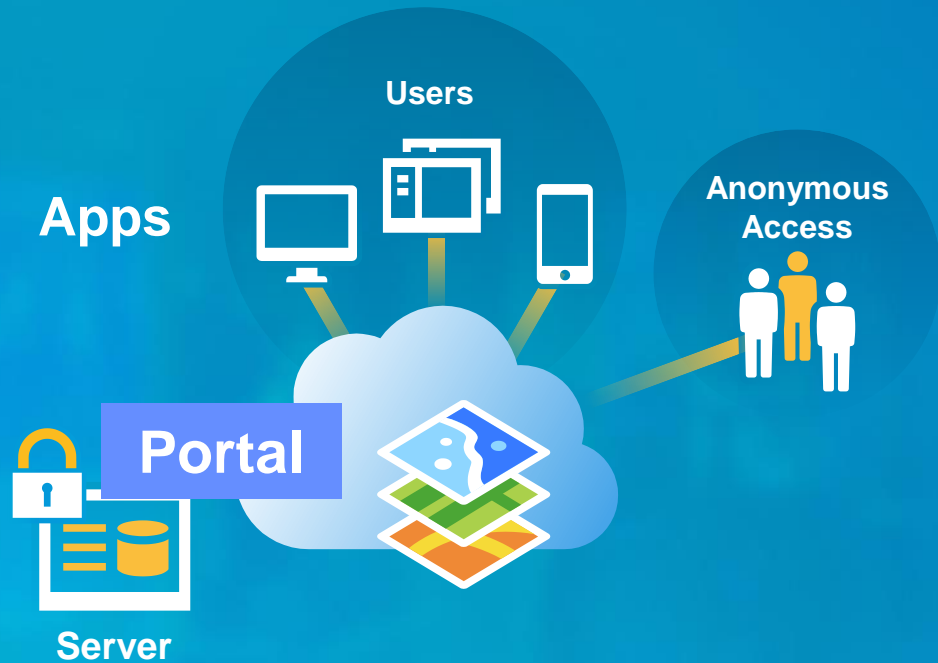
Runs Anywhere

Many Widgets

*Easy App Development . . .
. . . across the Enterprise*

Server

Enterprise GIS Infrastructure
Where You Need It



10.3

New

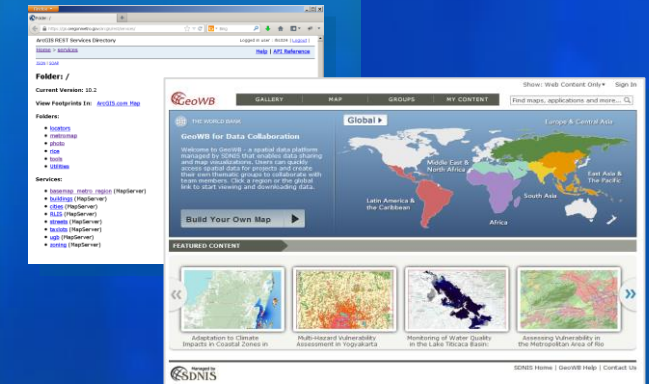
- Portal (Included)
- Custom Roles
- 3D Services
- Real-Time Services



Monitoring Tools

Improved

- Scalability and Quality
- Authentication (SAML)
- Active Directory Support



Improved Server Experience

... Providing Geodata Management, Analysis, and Mapping

Developers

Enabling App Development
for the Enterprise and Beyond

```
-(void)mapViewDidLoad:(AGSMapView *)mapView  
{  
    // Add data as a Feature Layer  
    NSURL *featureLayerURL = [NSURL URLWithString:@"https://services.arcgis.com/..."];  
    self.featureLayer = [AGSFeatureLayer featureServiceLayerWithURL:featureLayerURL];  
    self.featureLayer.queryDelegate = self;  
    [self.mapView addMapLayer:self.featureLayer];  
}  
  
-(void)getCitiesPerCountry:(AGSMapView *)mapView  
{  
    // Query features by geometry or attribute  
    AGSQuery *countryQuery = [AGSQuery query];  
    countryQuery.where = [NSString stringWithFormat:@"country = 'USA'"];  
    [self.featureLayer queryFeatures:countryQuery];  
}
```



Windows

Web

Android

Python

REST

WPF

Java

JavaScript

Qt

.NET

HTML5

Swift

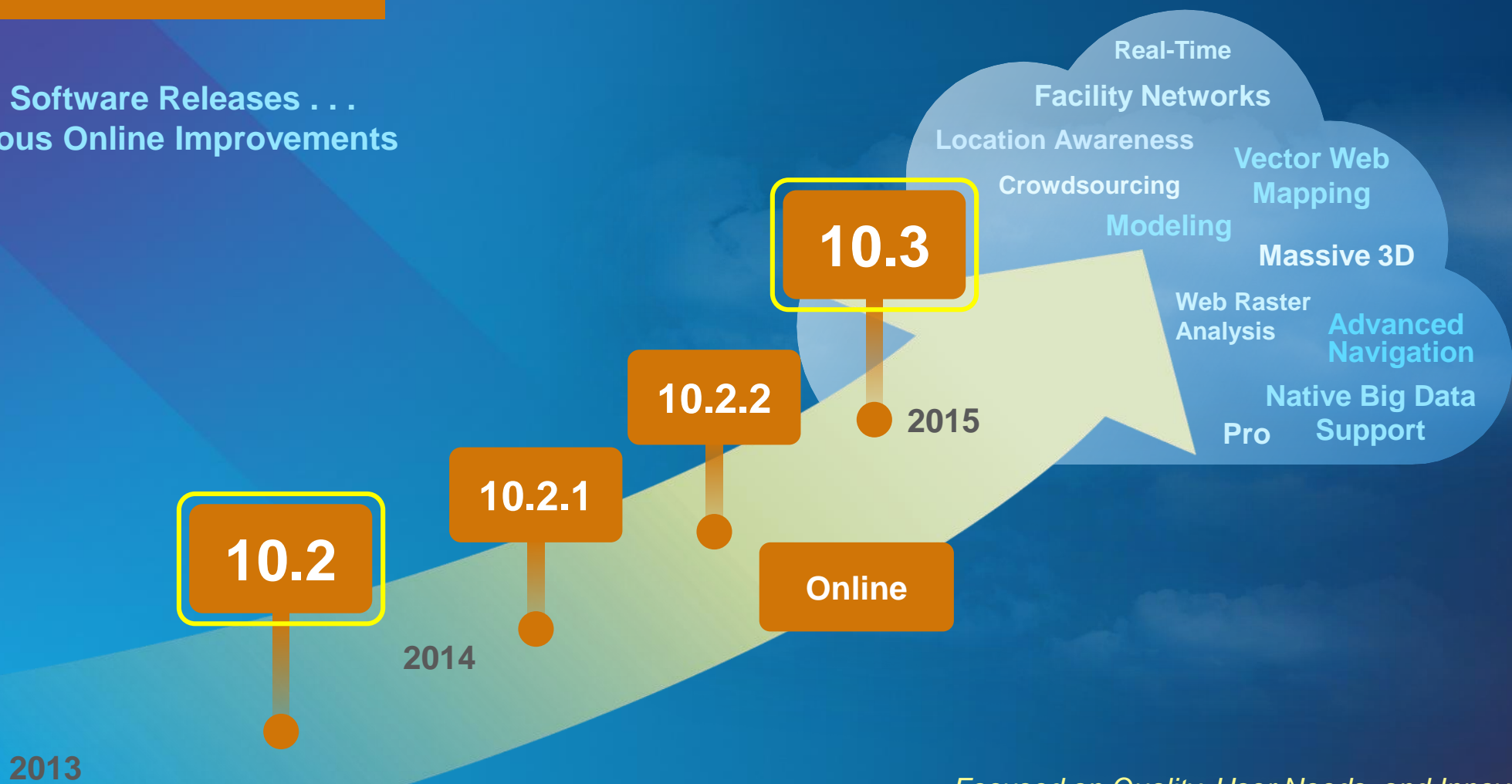
iOS

Providing Rich APIs, Runtimes, Content, and Services

Road Map

Advancing
the Platform

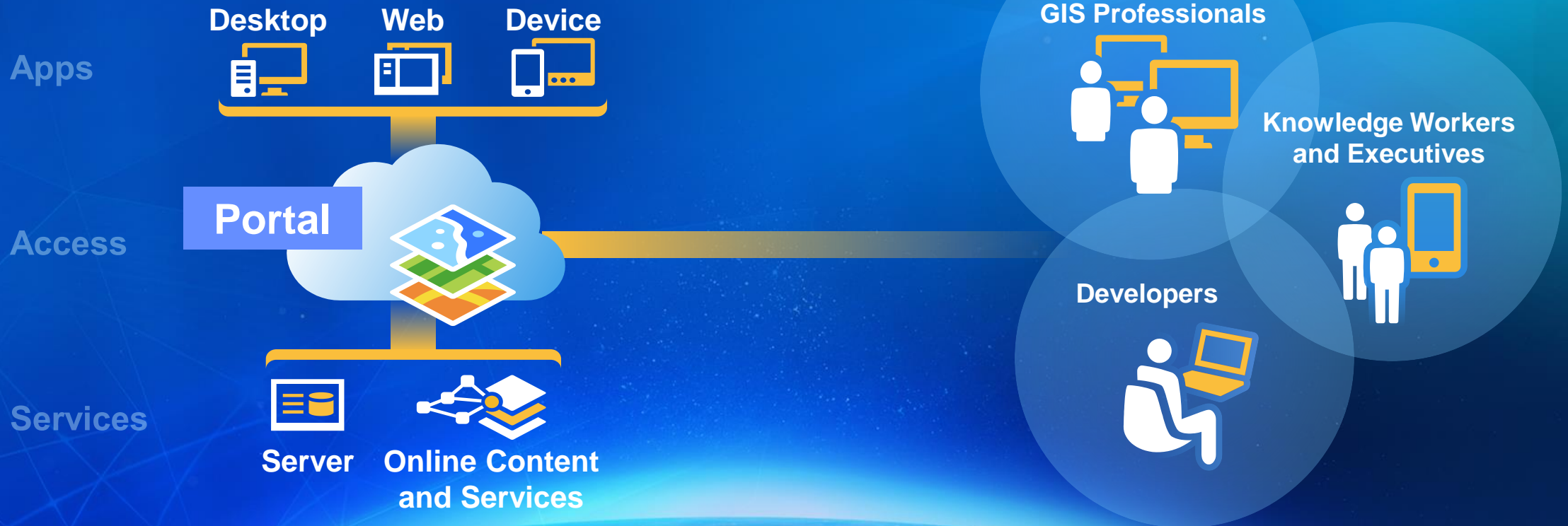
Incremental Software Releases . . .
. . . Continuous Online Improvements



. . . Focused on Quality, User Needs, and Innovation

ArcGIS

Growing
Our Community



Thank You



Understanding and Embracing Web GIS and Geodesign

Envisioning What's Possible

Providing Leadership and Doing the Work



Understanding our world.