



Using the Map to Make Responders Safe

Contact: Chris Rogers

crogers@publicsafetygis.org

Twitter: @map_hour

Before the Alarm

Registered Features

- Map to know the Responders location
- On the way
- Map to know the location
- Map to know the location

Results

- Location of Responders
- Location of Responders
- Location of Responders

Watch Out!

Incident



Using the Map to Make Responders Safe

Contact: Chris Rogers

crogers@publicsafetygis.org

Twitter: @map_hour

Before the Alarm

Preplanned Features

- Use to monitor the environment
- Use to monitor the environment
- Use to monitor the environment

Results

- Improved response time
- Improved response time
- Improved response time

Watch Out!

Incident

Goals

- QUICKLY explain Symbols Guideline
- Demonstrate Resource to use it

DISCLAIMER

- This is not a DISCLOSURE and does not contain any
- This is not a DISCLOSURE and does not contain any



DISCLAIMER

- This is a GUIDELINE and not STANDARD
- This is to help responder groups enhance their STANDARDS



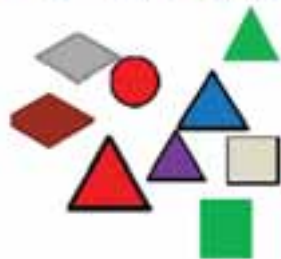
Responders need a map to:

Find the problem they are going to



Identify features to fix the problem

Pre-Incident Symbols



Show where people and equipment are located that help solve the problem

Unit

Feature Location

Incident Command

Incident Symbols

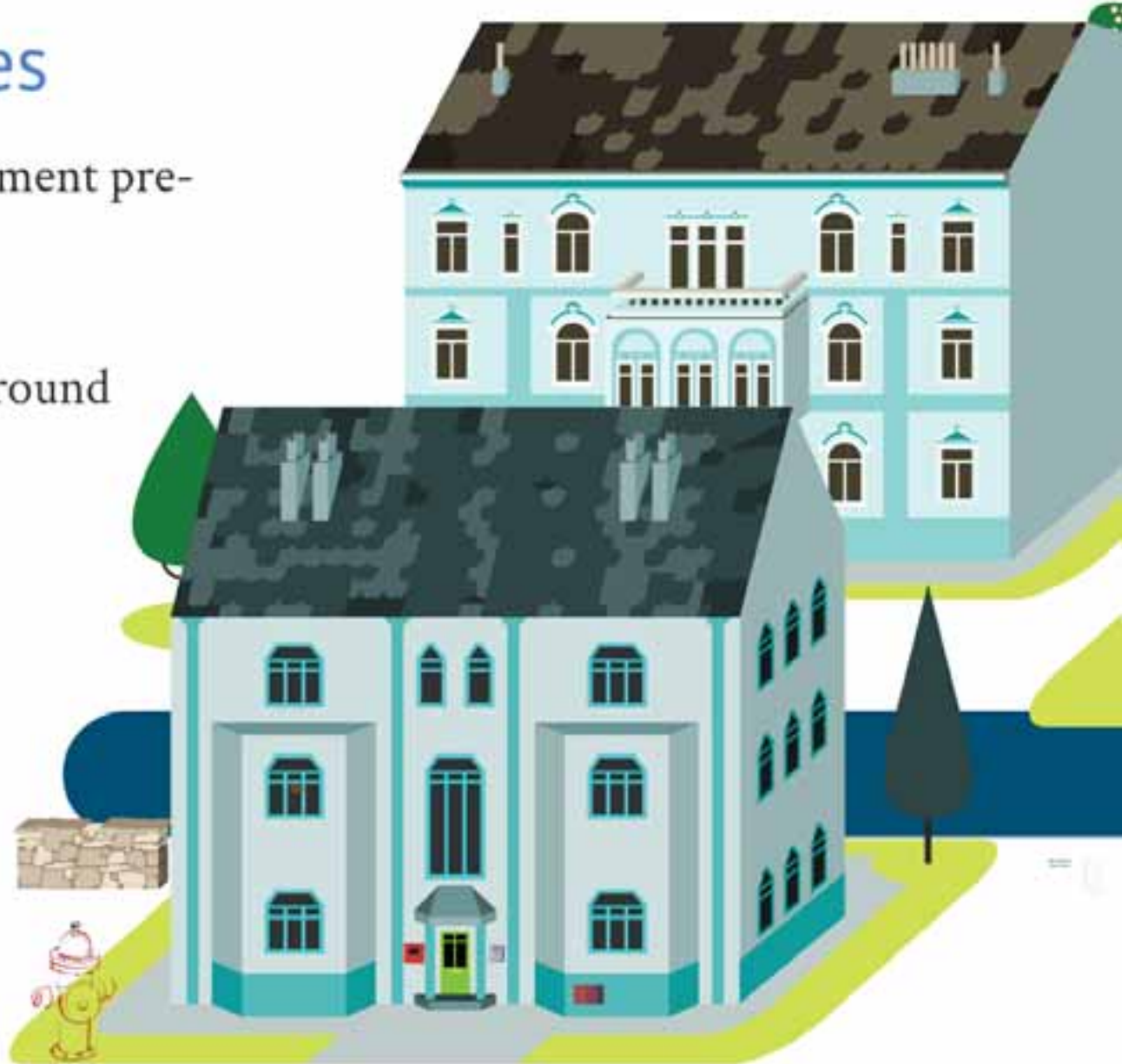
Identify hazards that can cause harm

Hazards



Preplanned Features

- Has its roots in fire department pre-fire planning
- Can be broadly defined
- Symbols have color background





Access Features: Features that identify access point or barriers to access. Includes key boxes, main entry, elevator, stairs, ladders



Detectors and building extinguish systems:
Smoke, Duct, Pull Station



Geographic Building Features: Features inside a building such as rooms, common areas, businesses, or other features with a specific purpose



Fire Suppression Features: Primarily for fire units. Examples include fire department connection, sprinkler shutoff, hose connections



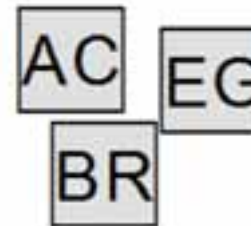
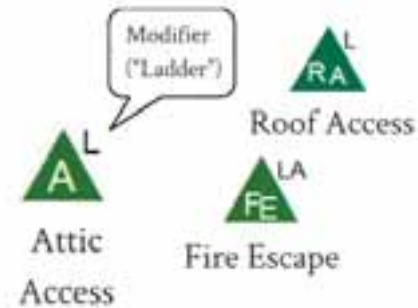
Shut off utilities or product: Examples include electrical, gas, water, and communication shutoff



Ventilation: Feature that help remove airborne hazards that health problems (smoke, chemical vapors, fart bombs, smelly laundry)



Alarms: Examples include fire alarm panel, burglar alarm, smoke detector,



Consistent with
NFPA 1620

Watch Out!

Hazards

- The most important symbols
- Derived from several hazard features
- Diamond reserved shape



General Hazard



CRS "Incident" technology



DOT HazMat Placarding



HPFA-704

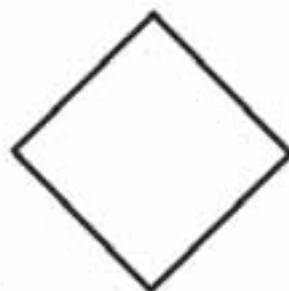


Hazards

- The most important symbols
- Derived from several hazard features
- Diamond reserved shape



General Hazard



DHS "Incident"
Symbology



DOT HazMat Placarding



NFPA 704

Incident



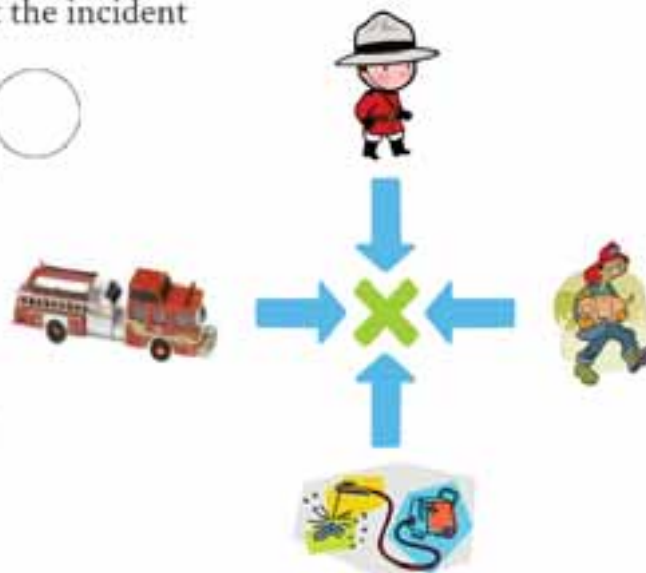
Symbols used for Incident Features

- Types
 - NIMS
 - Units
 - Command locations
- Clear background (Hand Draw)
- Can be modified do on the fly



Incident Features

- Features used to help support the incident
- Clear circle
- Show location where
 - People should go
 - Equipment is located



Examples



Examples



Base



Emergency
Shelter



Evacuation
Feature



Staging



Fire Hydrant



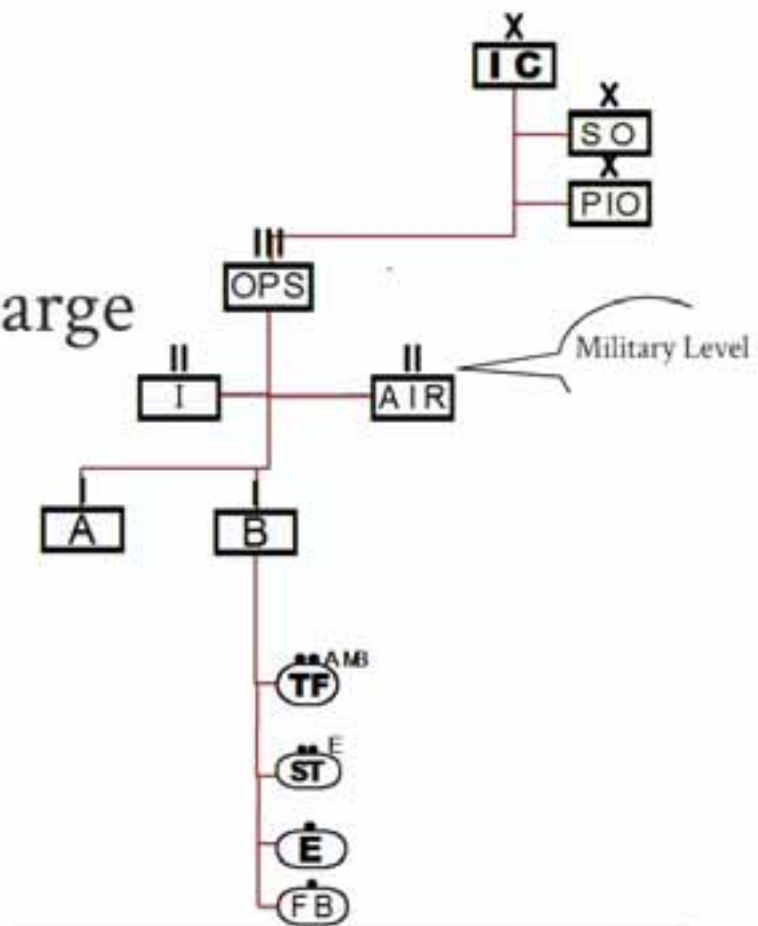
Civilian
Staging



Camp

Incident Command Location

- Consistent with NIMS
- Clear Rectangle
- Location of the person in charge



Unit

- Clear Oval
- Used to map location of the “Unit Working”
- Effective when “passive” data is collected

E21

Firefighter Smith

LAW

Unit



Exceptions

There is always an exception

Command Post (not a circle)
Use Clear Text to explain



Color (Treatment in this example)
Represents "Green Patient" value

Symbol Modifiers



Dashed line if feature is "in the future",
"not in use", or "planned"

Clear text on the bottom
Arrow on symbol note direction



There is always an exception

Command Post (not a circle)
Use Clear Text to explain



Color (Treatment in this example)
Represents "Green Patient" value

Symbol Modifiers



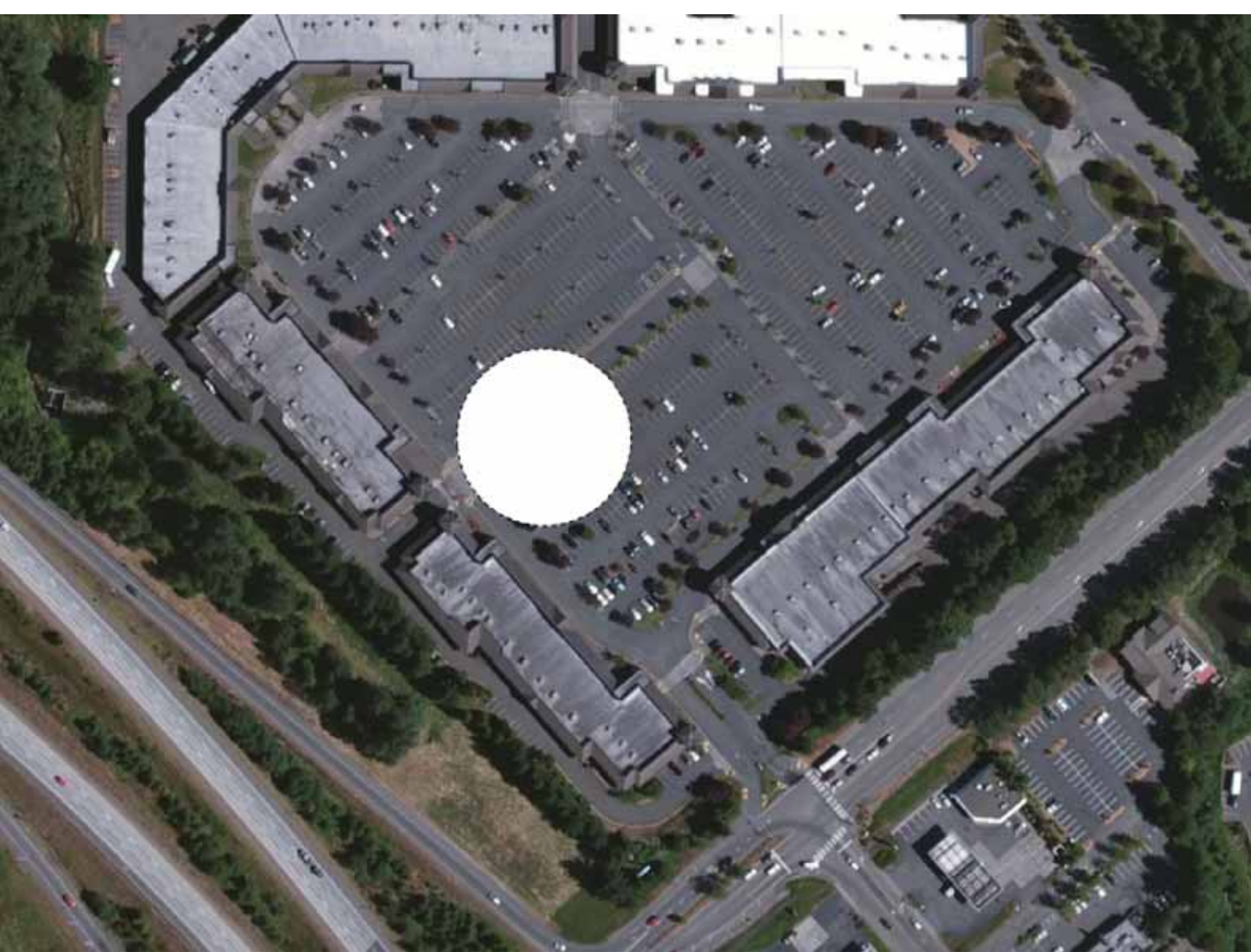
Dashed line if feature is “in the future”,
“not in use”, or “planned”

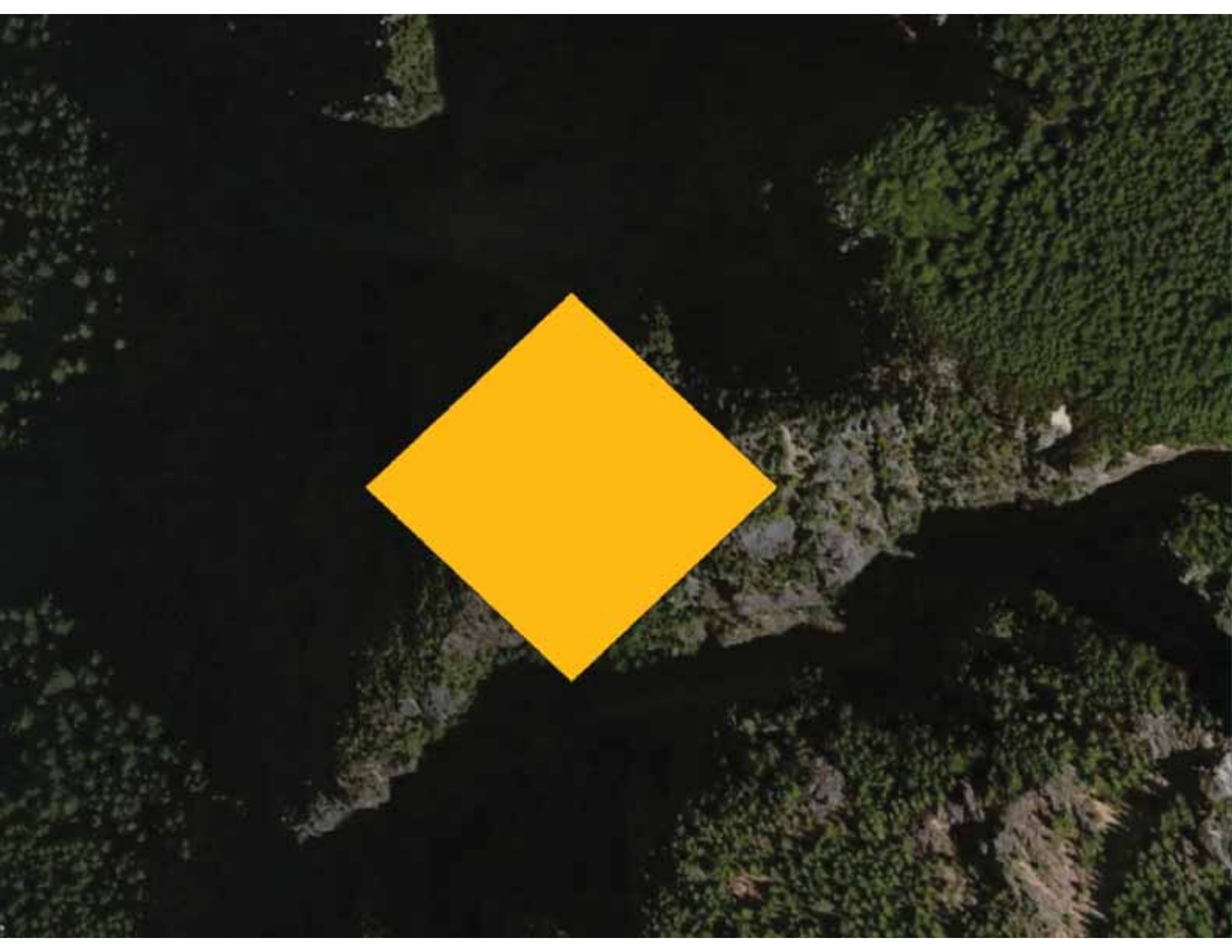
Clear text on the bottom
Arrow on symbol note direction



If it looks like it?









Click on Attribute



Legend

Command Post

Feature Code

Camp

Staging



Legend

bing

Resources



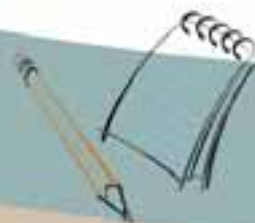
Incident Symbolology Workgroup Symbols
(Raster Images)

<http://symbols.firemapping.com>



NAPSG ArcGIS Online

<http://napsg.maps.arcgis.com>



A pencil and paper



Contact: Chris Rogers

ME?

- Career Fire Lieutenant/Kirkland Fire Department
- Lead NAFSG Incident Psychology Workgroup
- BS Cartography



crogers@publicsafetygis.org



Twitter: @map_hoser