

Esri National Security Summit

July 12–15, 2014 | San Diego, CA



Implementing Critical Information Sharing

Charles Werner, Chief, Charlottesville Fire Department



gov't
industry
ngos
academia

whole of community



local & tribal

state

regional

national

*public &
private sectors*

access



Needs & Requirements
technical & operational workflows

Working Groups
Advisory Councils

Implementation Projects Program
CAUSE III
CAPSTONE-14

Emerging Gaps & Best Practices
governance, SOPs, training, technology, & usage

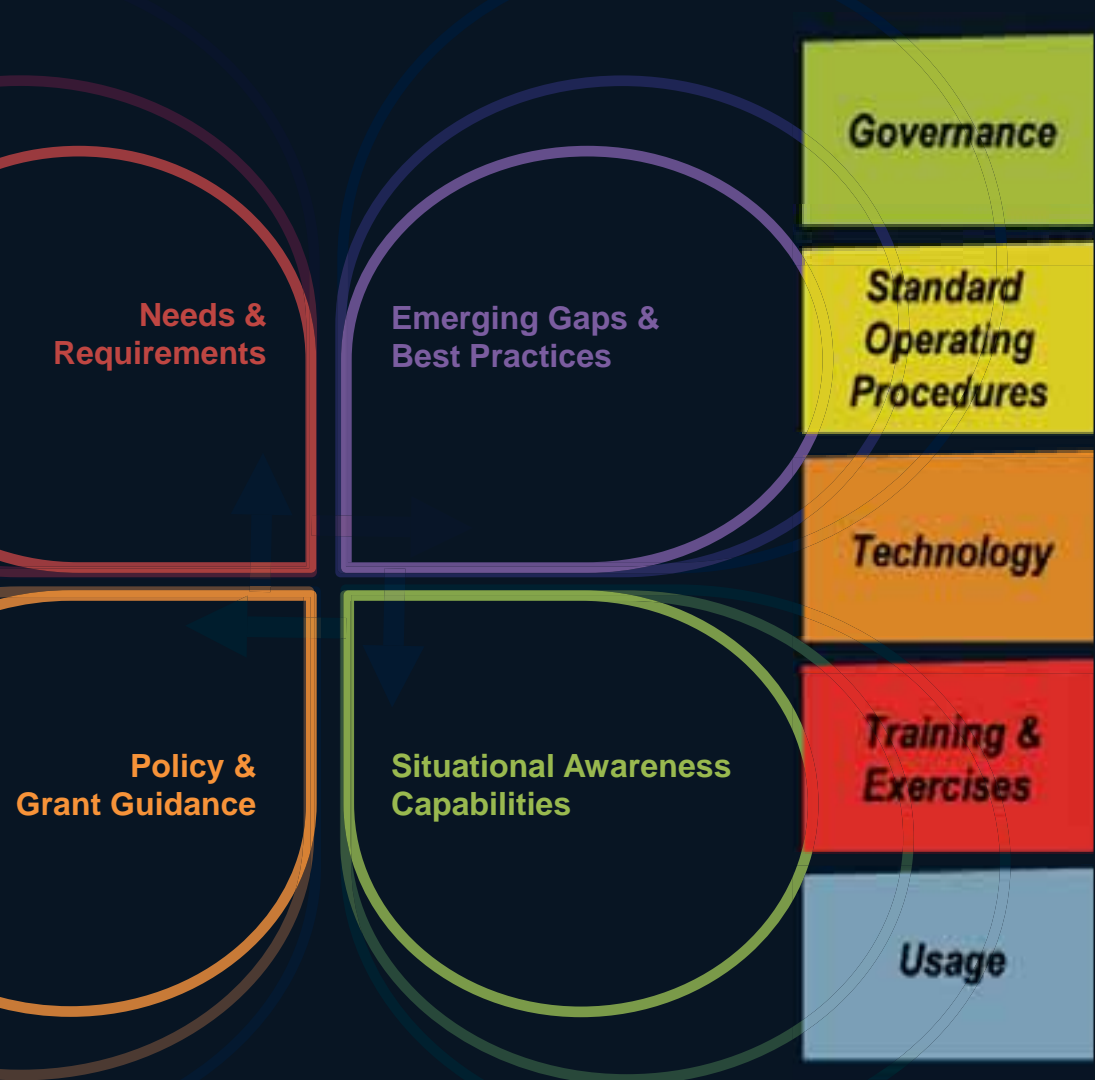
approach

Policy & Grant Guidance
standardized technical & operational workflows

White House Incident Management Information Sharing Committee

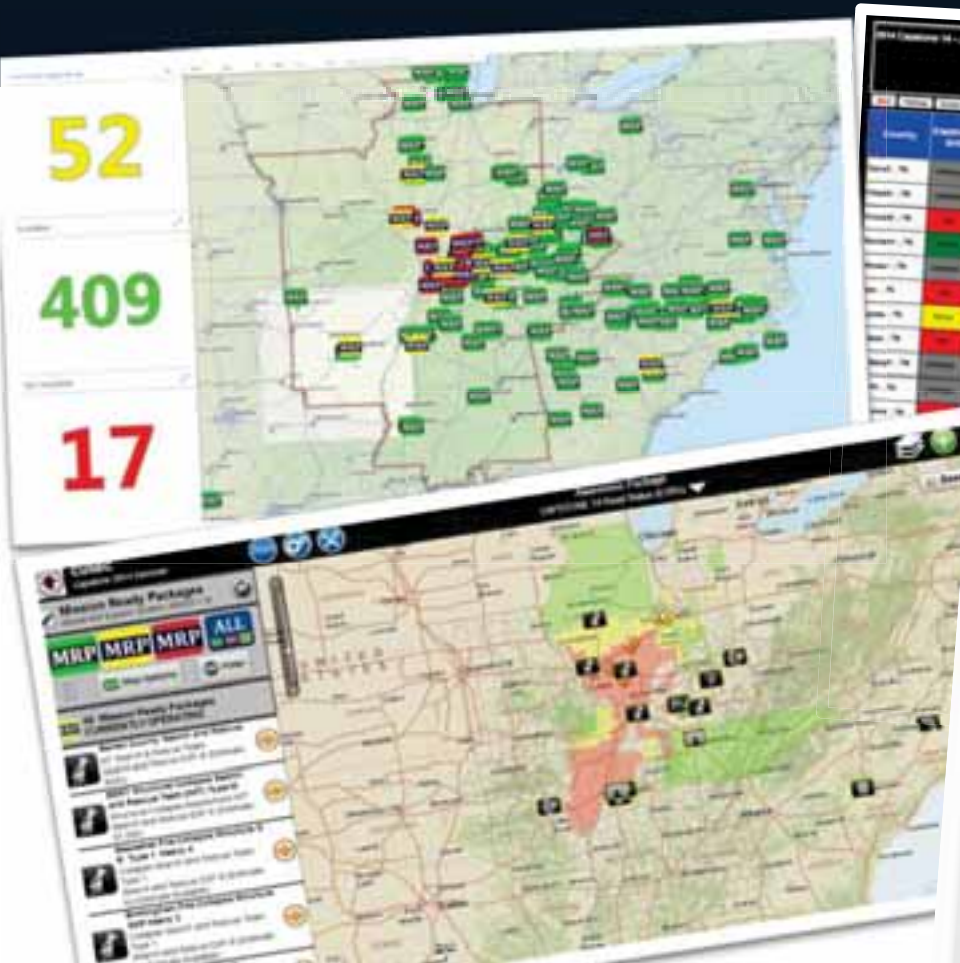
Virtual USA®
NISC Information Sharing Environment

Situational Awareness Capabilities
information access, sharing & management



approach

CAPSTONE-14 AAR: Technology



A screenshot of a data table titled "Essential Elements of Information". The table has multiple columns, including County, Hazard Type, and various hazard-related metrics. The cells are color-coded in blue, green, yellow, and red, indicating different levels of hazard severity or status. The table is part of a web application interface with a search bar and navigation buttons.

A screenshot of the Central US Earthquake Consortium (CUSEC) website. The header features the title "Central US Earthquake Consortium" and "Web Maps and Applications". Logos for CAPSTONE, NISG, and VIRTUAL USA are visible. The main content area is titled "CUSEC: Citizens Group" and displays four featured items: "10 Schools, 2011", "National Broadband Availability (NBA)", "New Madrid Seismic Zone: National Events", and "ESP 3 Transportation CUSEC".

The Central U.S. Earthquake Consortium (CUSEC) was established in 1983 with funding support from the Federal Emergency Management Agency. CUSEC's primary mission is "...the reduction of deaths, injuries, property damage and economic losses resulting from earthquakes in the Central United States." CUSEC is a partnership of the federal government and the eight states most affected by earthquakes in the central United States. These states are: Alabama, Arkansas, Illinois, Indiana, Kentucky, Missouri, Tennessee, and West Virginia.

This site was developed in partnership with the National Information Sharing Consortium (NISIC), a U.S. Department of Homeland Security (DHS) partner for the Virtual USA Program (VUSA). The site has also been designated to support participation in the CUSEC-led CAPSTONE-14 exercise.

This document is the property of the U.S. Department of Homeland Security.

NISC Sharing Model (vision)



Cloud-based &
on-premise data
libraries, servers,
systems of record

CREATION & PUBLICATION

USAGE & DECISION-MAKING

- Direct, but controlled, access to data libraries
- Nationally-relevant data organized in packages = meaningful, immediate & repeated use & sharing



Hurricane Arthur and authoritative EM Twitter feeds
Secondary is the non rain event status, by combining 5 Day Rainfall forecast we see that Hurricane Arthur's heaviest rain is all out over the open waters of the Atlantic.

CAVS Situation Room
Powered by the VISE

Apps [gear icon] [cross icon]

Awareness Package
Charlottesville Active911

BaseMaps

Awareness Package App

Filter: [input field]

- Charlottesville A211 Devices [i icon]
- Charlottesville A211 Alerts (4 Hours) [i icon]
- Charlottesville A211 Agency [i icon]
- Charlottesville A211 Alerts (Unfiltered) [i icon]
- Charlottesville A211 Locations [i icon]

BREATHING PROBLEMS M
--2014-05-21 15:54:26
Zoom to

GH

DATA: Carl, HEDS, OSL, omni, internap, PC, TomTom, MET, NASA, USGS, etc.

Active 911 with AVL Feed for Charlottesville Fire Department

CAVS Situation Room
Powered by the VMSE

Awareness Package
Civil KPIs

Awareness Package App
Daily View

Filter:

- Highway Access Restrictions
- Highway Conditions
- Property Damage
- Road Obstructions
- NE Pilot Transportation Status PT
- NE Pilot Transportation Status LN
- Structures
- Addresses
- Fire Stations

Broadcastify

Preset Stations By Map Extent

Albemarle County Public Safety
Charlottesville Police, Fire and EMS

BaseMaps

GH
VITA, Esri, HERE, DeLorme, USGS, Mapbox

Broadcastify with AVL Feed for Charlottesville Fire Department

Filter Results (4)

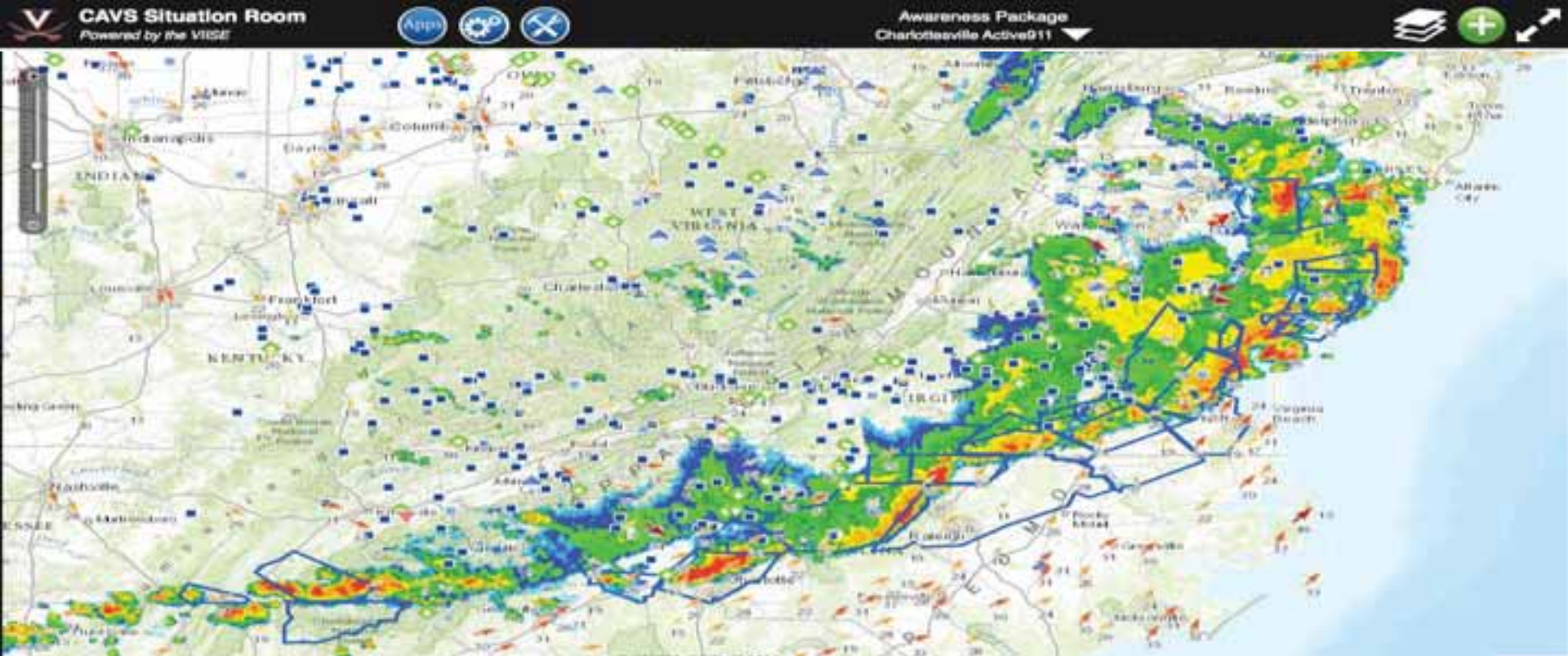
Filter Draw Draw Buffer

Radius: 7.07 mi
Area: 157.21 sq mi

- National Hurricane Center Skywarn...
county: Albemarle
- Worldwide Amateur HF Nets
county: Albemarle
- Albemarle County Public Safety
county: Albemarle
- Charlottesville Police, Fire and EMS
county: Albemarle



Broadcastify with AVL Feed for Charlottesville Fire Department



Extreme weather in Virginia:

Weather Radar

Loop Last 30 Minutes

Legend

VDOT_Incidents

Incidents

- Incident
- High Priority Incident

Uva Construction

Uva Construction

- Construction/Excavation
- Utility Construction/Excavation
- Traffic Alert

VDOT_Construction

VATEventLinePoint

-

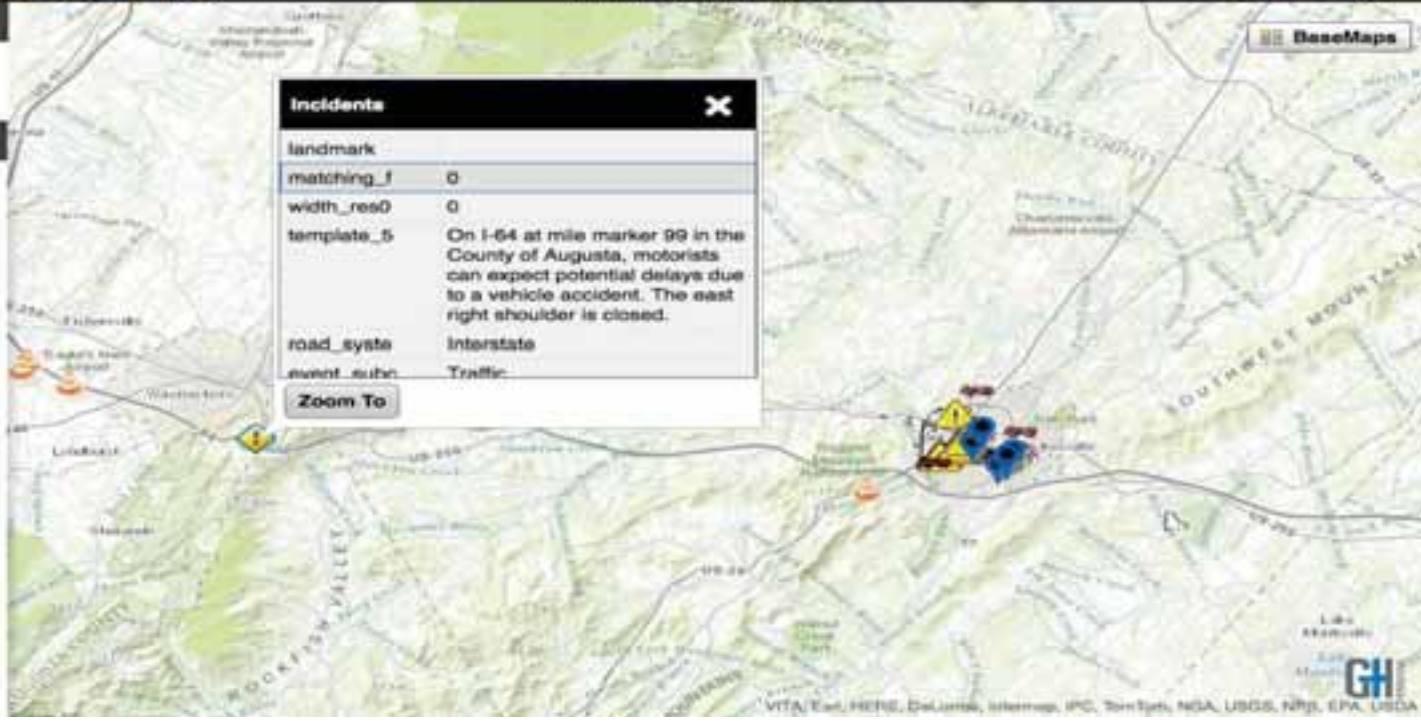
VDOT_Road_Conditions

val_road_cond_point

- Advisory
- Closed

Charlottesville A911 Locations

Charlottesville A911 Alerts (Unfiltered)



Regional Situational Awareness

Community Dashboard Capstone 14

Page Sets - 0

vBEOC

WISE presents the regional situational awareness package. For technical support during the exercise please email wiseenquiries@ghinternational.com or contact one of the GH staff onsite during the Capstone 14 exercise.

WISE Map - CUSEC Regional Common Operating Picture

CUSEC Capstone 2014 Exercise

Awareness Package Capstone 2014 Alert and Warning

Awareness Package App Daily View

Filter:

- IPAWS Alert (Test Development Lab-TDL)
- LIVE USGS 2.5+ EQs
- Day 1 USGS Exercise Data
- WebEOC Fusion
- CUSEC Seismic Density MSD
- Earthquakes (EQS)

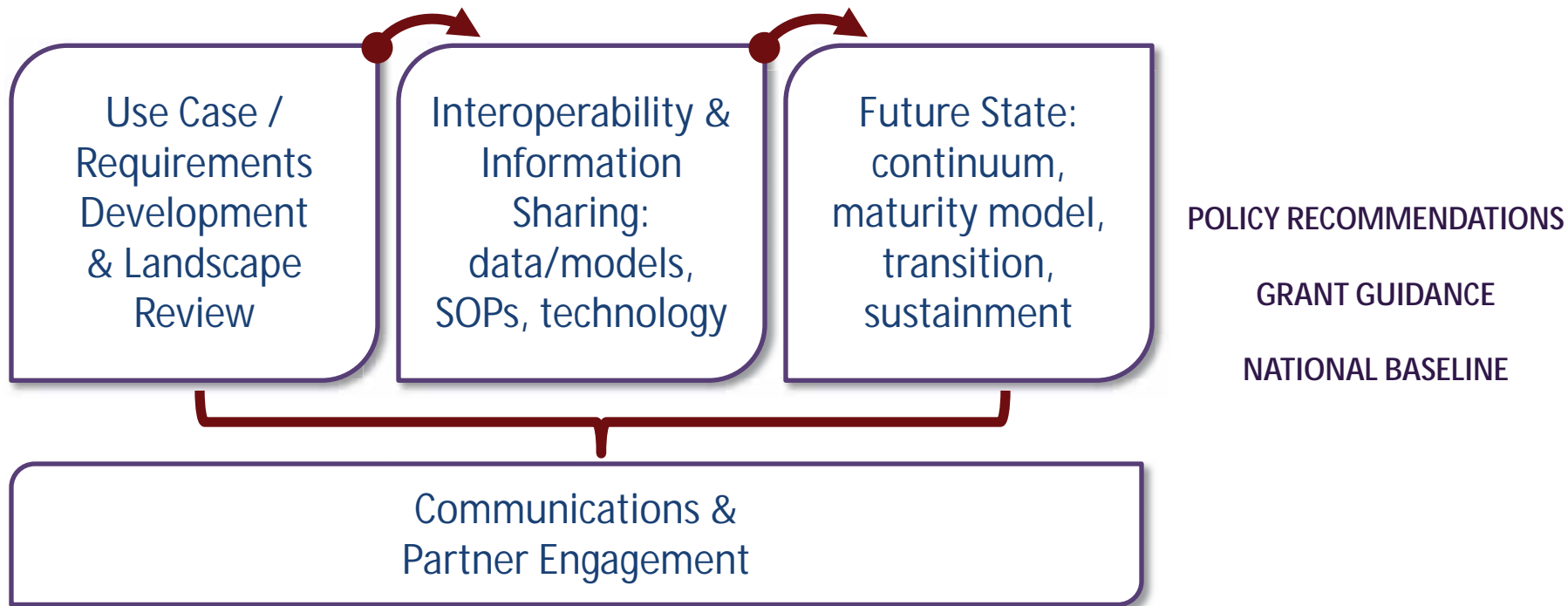
Earthquake ShakeMaps (USGS) - EXE...

time_000	8:00:00 AM
pubdate	6/16/2014
Month	7
DESC_	EXERCISE DATA for CUSEC-CAPSTONE 2014 # 4.25 km south of Gards Point,IL (Mag-MbLg-NEIC)
source	NM
time	8:00:00 AM
magnitude	6

Zoom To Follow Link

Private Sector Symposium

Incident Management Information Sharing Sub-committee



join us
on behalf of your
organization or
company

Request the NISC
Memorandum of
Agreement

www.nisconsortium.org
info@nisconsortium.org

NISC National Information
Sharing Consortium

Visit us!
Booth #N638

The background features a solid blue gradient that transitions from a darker shade at the top to a lighter shade at the bottom. On the left side, there are several overlapping, semi-transparent geometric shapes in shades of orange, red, and yellow, creating a layered, abstract effect.

Questions?