

Esri National Security Summit

July 12–15, 2014 | San Diego, CA



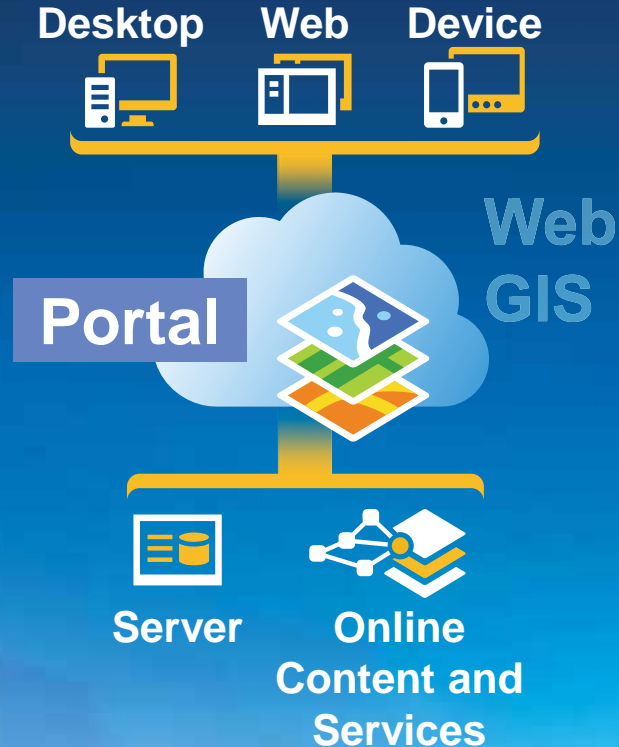
Cybersecurity: A Critical New Domain for GIS

Brian Biesecker and Richard Gale, Esri

GIS Is a Platform

Enabling Web GIS Everywhere

Simple
Integrated
Open



*Available in the Cloud . . .
. . . and On-Premises*

Cyberspace Re-Considered

It's Mappable

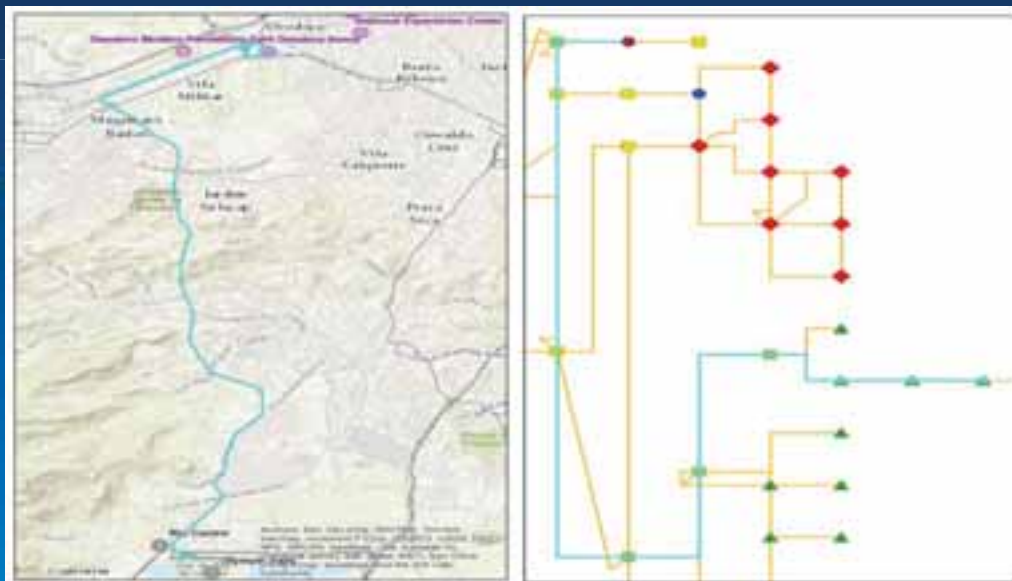
Social / Persona Layer

Device Layer

Logical Network Layer

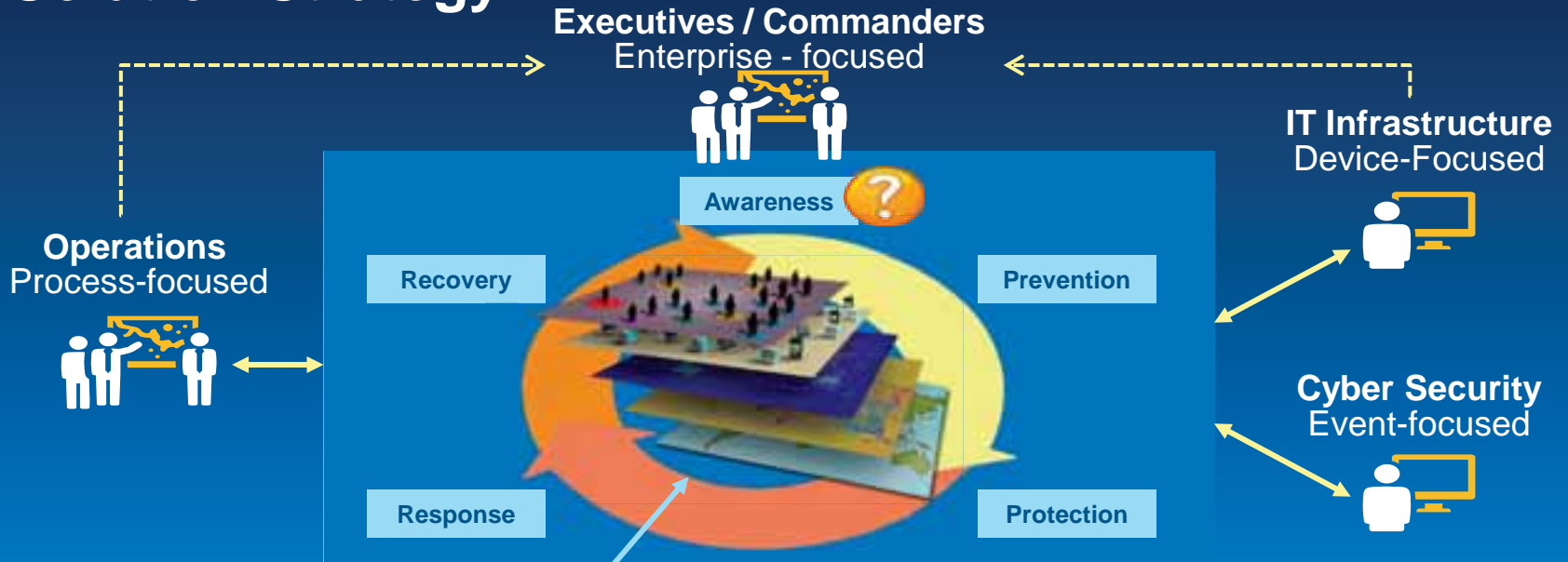
Physical Network Layer

Geographic Layer



- Each device in cyberspace is owned by someone (no 'global commons')
- Electro-mechanical devices exist in space-time and interact with physical events
- Geography is required to integrate and align cyberspace with other data

Solution Strategy



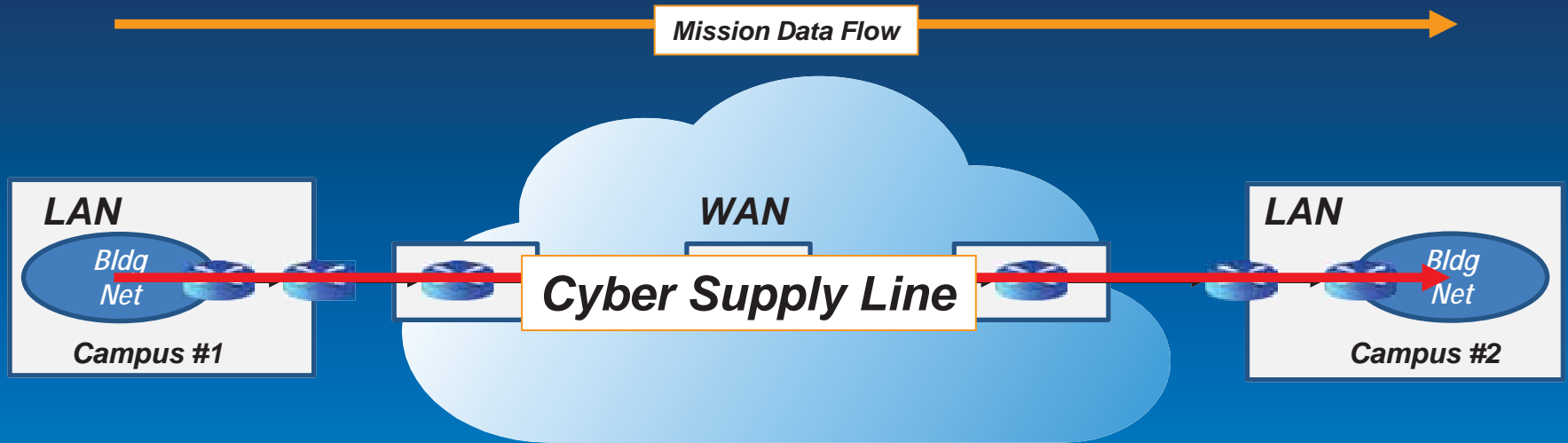
AREAS FOR IMPROVEMENT

Finding:
need for a Cyber Common Operational Picture (COP)



The Cyber Supply Line

A vector of devices



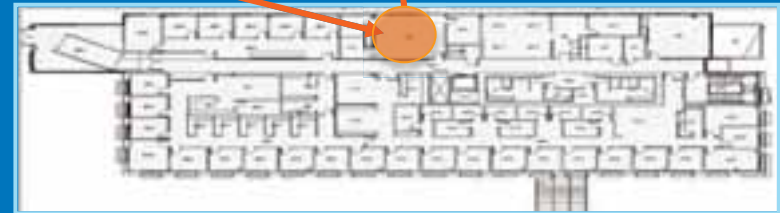
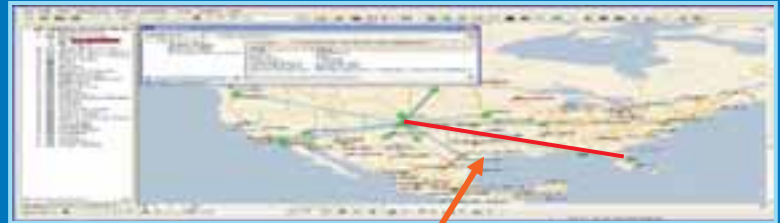
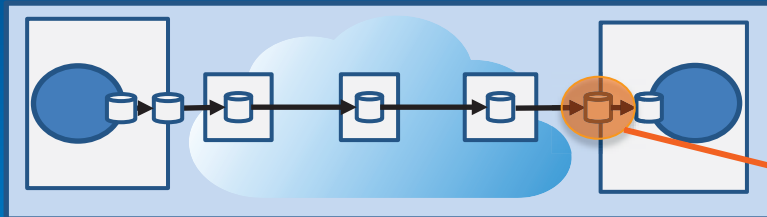
- Cyber Supply Line (CSL) is a *consistent* path through the infrastructure
- CSL focuses resources on only the devices that are critical
- Managing data flows is similar to traffic routing; an Esri core competency

Effect Propagation

Multi-level Model of Data Flow

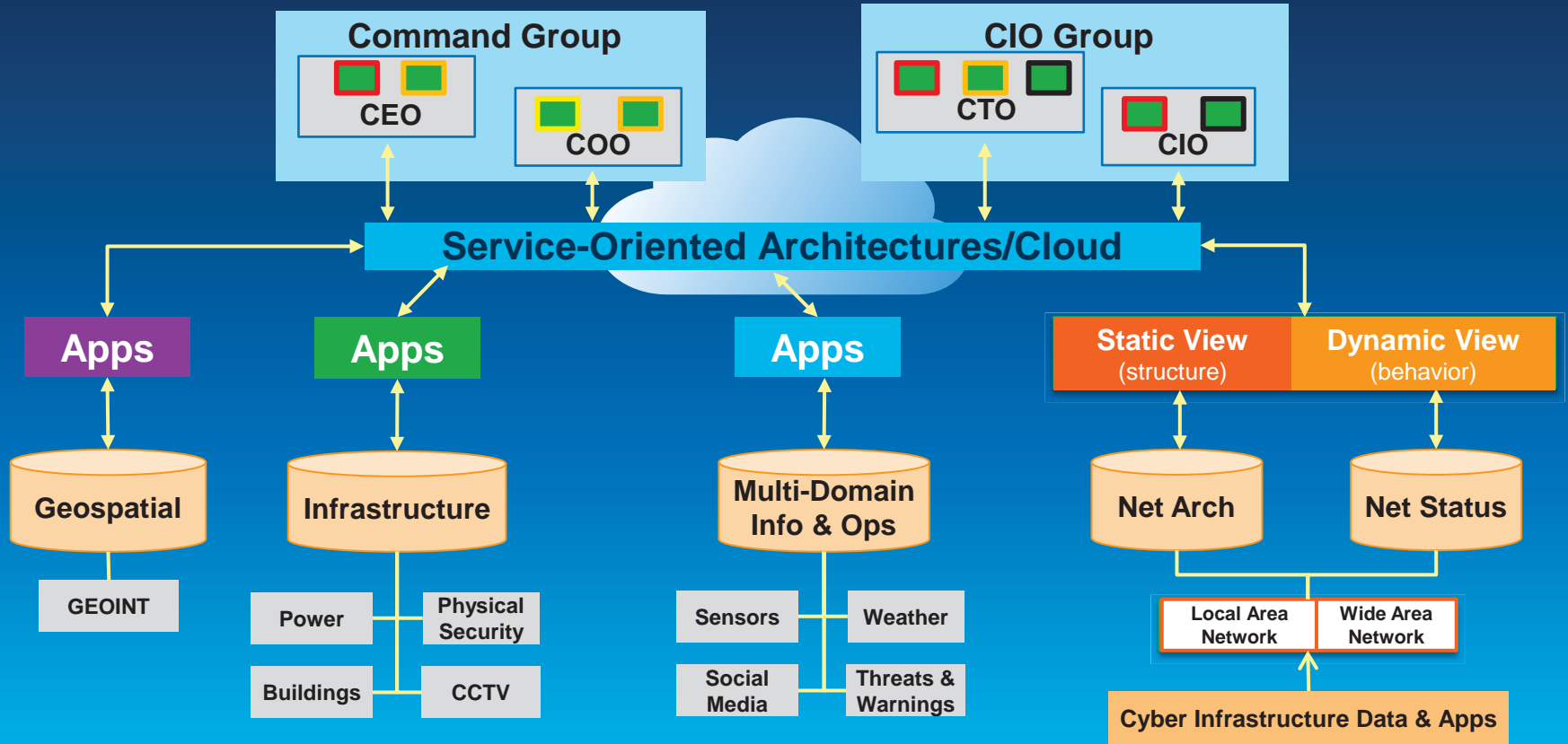


Maintain Data Flow → Mission Assurance



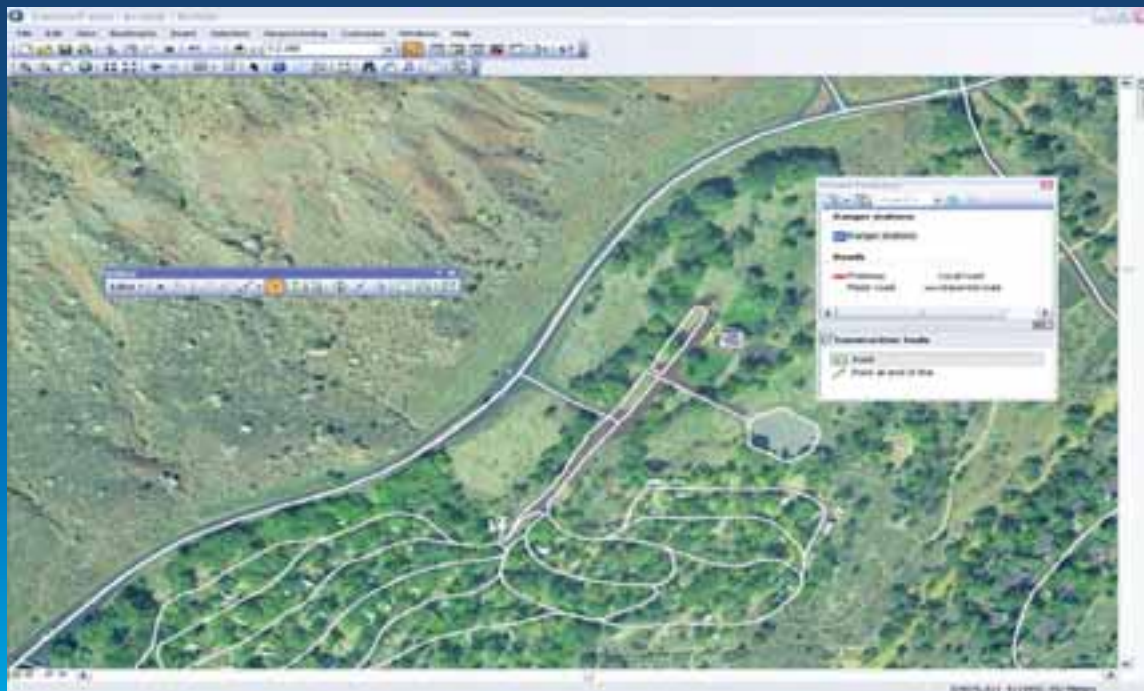
Solution Strategy

Integrate Cyber into existing Operational Pictures

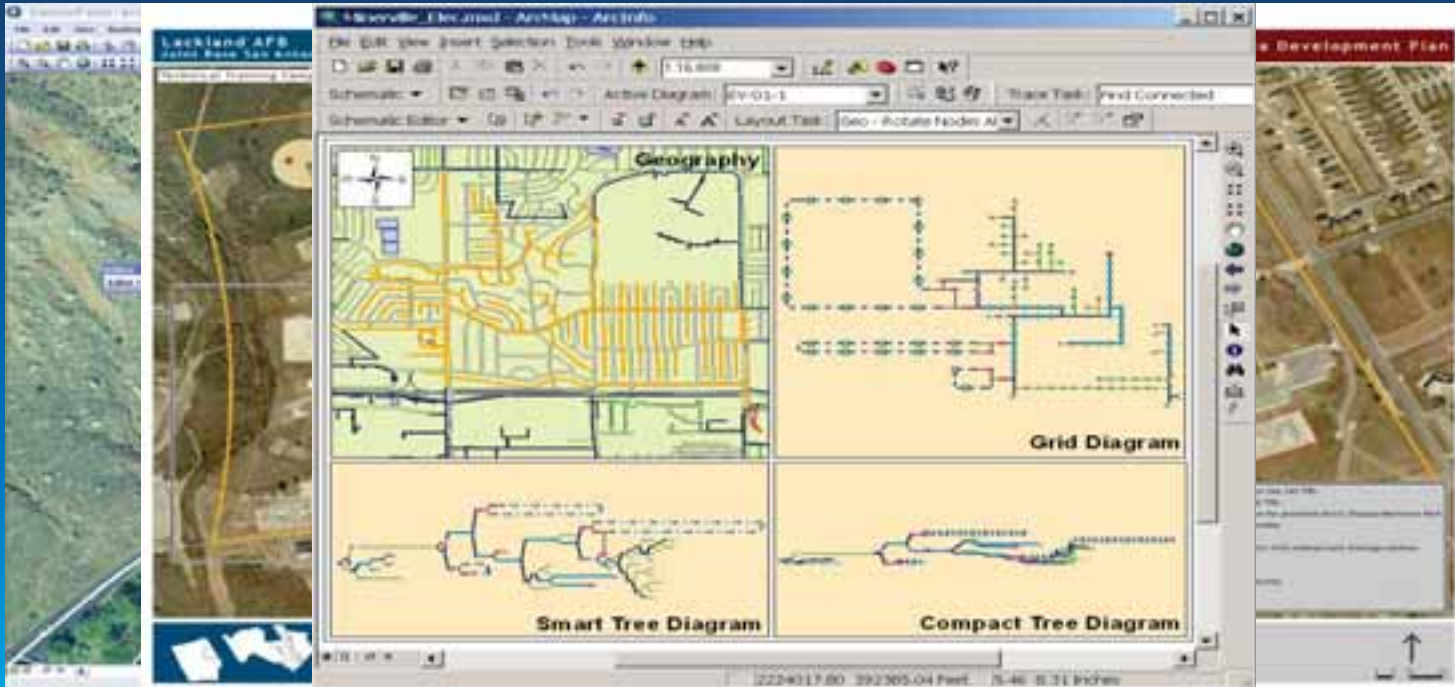


Cyber Demo

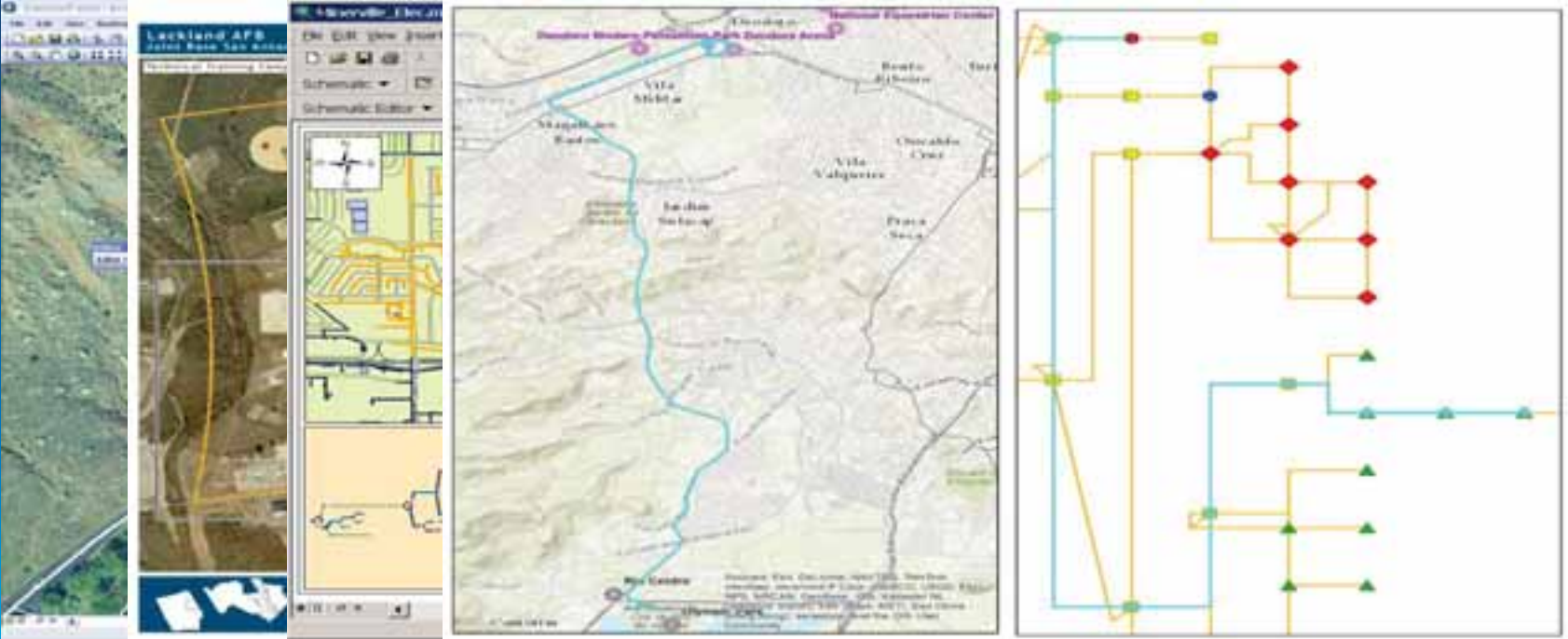
Cyber Summary



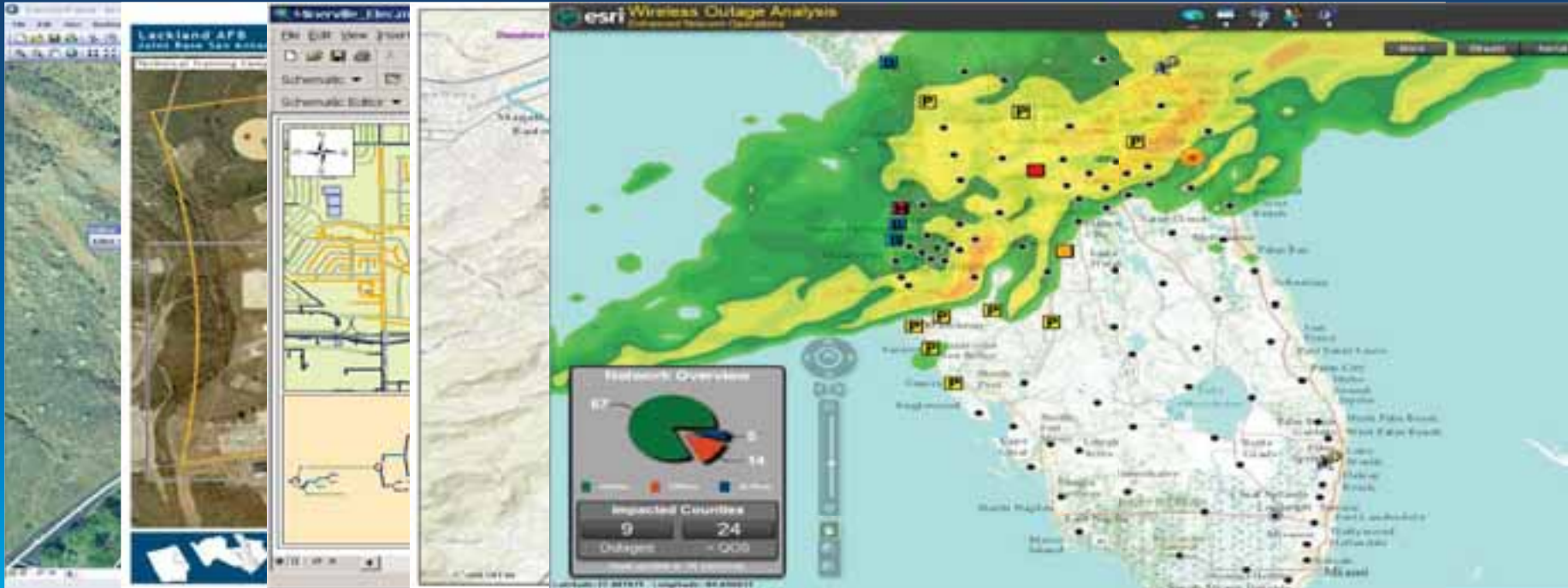
Cyber Summary



Cyber Summary



Cyber Summary



The background features a solid blue gradient that transitions from a darker shade at the top to a lighter shade at the bottom. On the left side, there are several overlapping, semi-transparent geometric shapes in shades of orange, red, and yellow, creating a layered, abstract effect.

Questions?



Understanding our world.