



# NATIONAL SECURITY SUMMIT

## Establishing a Rapid Geospatial Support Capability

Brett Dixon  
National Security Lead – Asia Pacific

Craig Pitman  
Solution Engineer – Asia Pacific



Malaysian Airlines flight MH17  
departed Amsterdam with 298 people,  
from 10 countries on board  
17 July 2014 at 1014h (UTC)







Whilst cruising at FL330, it disappears from Ukraine and Russian radar at 1319h (UTC)





Malaysian Prime Minister  
Najib Razak addresses the world,  
confirming the crash  
at ~2000h (UTC)





**National Security  
Mission Space**

Complexity

Uncertainty

Risk



*“For a soldier trained at West Point as an Engineer, the idea that a problem has different solutions on different days was fundamentally disturbing. Yet that was the case.”*

*General Stanley C. McChrystal, 2014*

*On countering Al Qaeda operations in Iraq in 2003*

# Agility:

*the ability to successfully effect, cope with, and/or exploit changes in circumstances.*

Flexibility

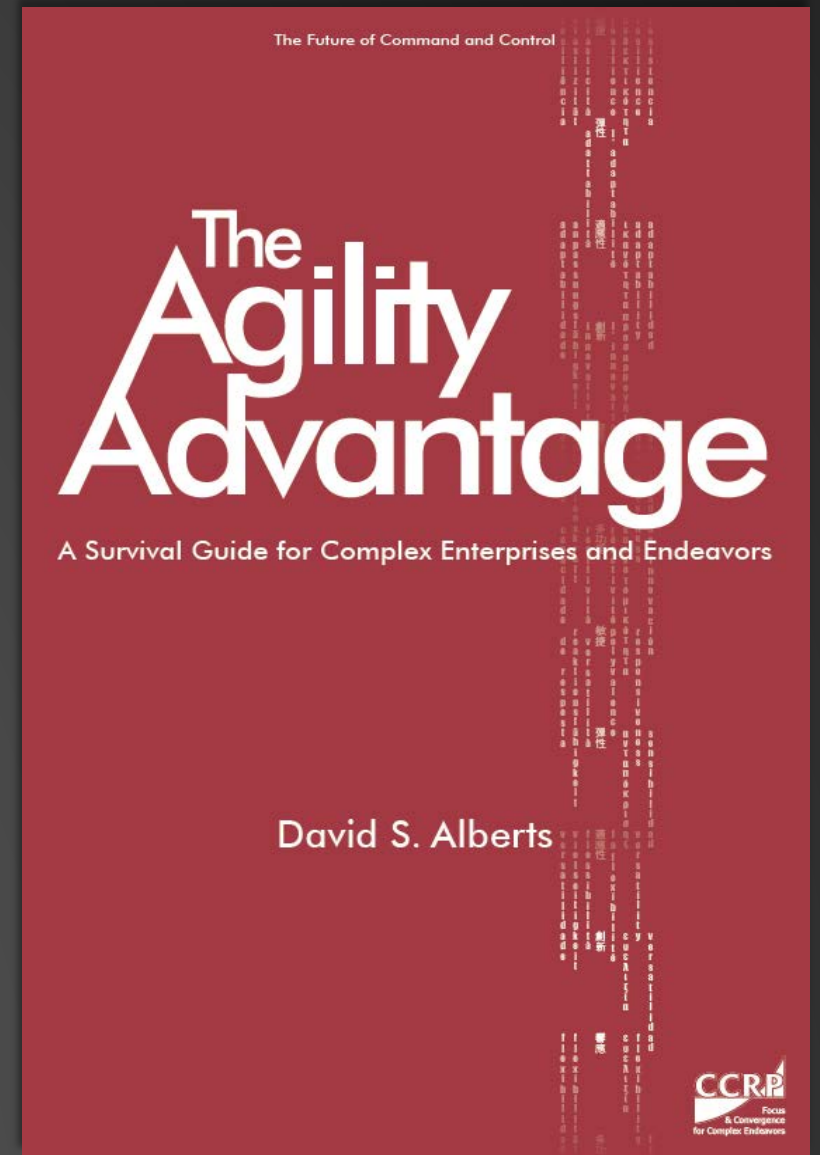
Adaptability

Innovation

Resilience

Robustness

Responsiveness





**National Security  
Mission Space**

**Complexity  
Uncertainty  
Risk**

**Principles of  
Geospatial  
Support?**

**Organisational  
Agility**

**Flexibility  
Adaptability  
Innovation  
Resilience  
Robustness  
Responsiveness**

Rapidly assembled  
“Geospatial Support Centre”  
Hilton San Diego Bayfront  
at 2300h (UTC)





**1**

**Embedded GIS Team**



*Main Op's - San Diego, USA*



*Users (multiple agencies, Malaysia)*



*In-country Op's – BGSP, Malaysia*

**2**

**Agile Support to  
Operations**




**MISSION SPECIFIC  
CONTENT**



- Foundation Data
- Application Templates
- Organizational Structure
- Publically Available Information

- Continuous User Engagement
- Hourly Sprints (initially)
- User Driven Development
- Continuous Content Management

- 
- Identify Stakeholders
  - Team structure
  - ArGIS Online Config
  - Order Imagery
  - Security

- 
- Initial User Needs
  - Identify Essential Info
  - New App Configuration
  - Develop COP
  - Content Management

- 
- Refine COP
  - App Release
  - New App Configuration
  - Content Management
- .....



# MH17 Response



**Operations View and Situational Awareness**



**Social Media and Languages Spoken**



**Malaysian Airlines flight MH17 Tracking**



**Passengers, Crew, Families, Embassies and Missions**

Malaysia Airlines flight 17 (MH17 or MAS17) was a scheduled passenger flight from Amsterdam Schiphol airport to Kuala Lumpur airport. The Boeing 777-200ER operating this service on 17th July 2014 disappeared from radar at 13:15 hours UTC, and crashed in the Ukraine.

This portal presents historical, contextual, geospatial and briefing materials to assist in the response and understanding of the incident. It is owned by the Defence Geospatial Division (BGSP), Department of Survey and Mapping Malaysia (JUPEM).



Surface to Air Missile Intelligence

Q Filter

Approximate area of missile launch

Subsequent Incidents

Q Filter

Terrorists block exit of victims bodies on train.  
July 20, 2014

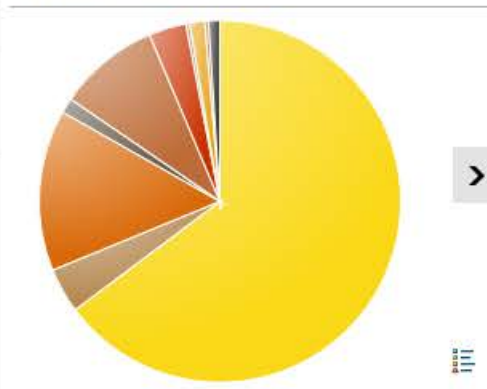
Debris and Victims

- Debris next to road, south of Hrabove
- 
- 
- Major Debris Site, Wreckage, Fire
- 

Victim Count

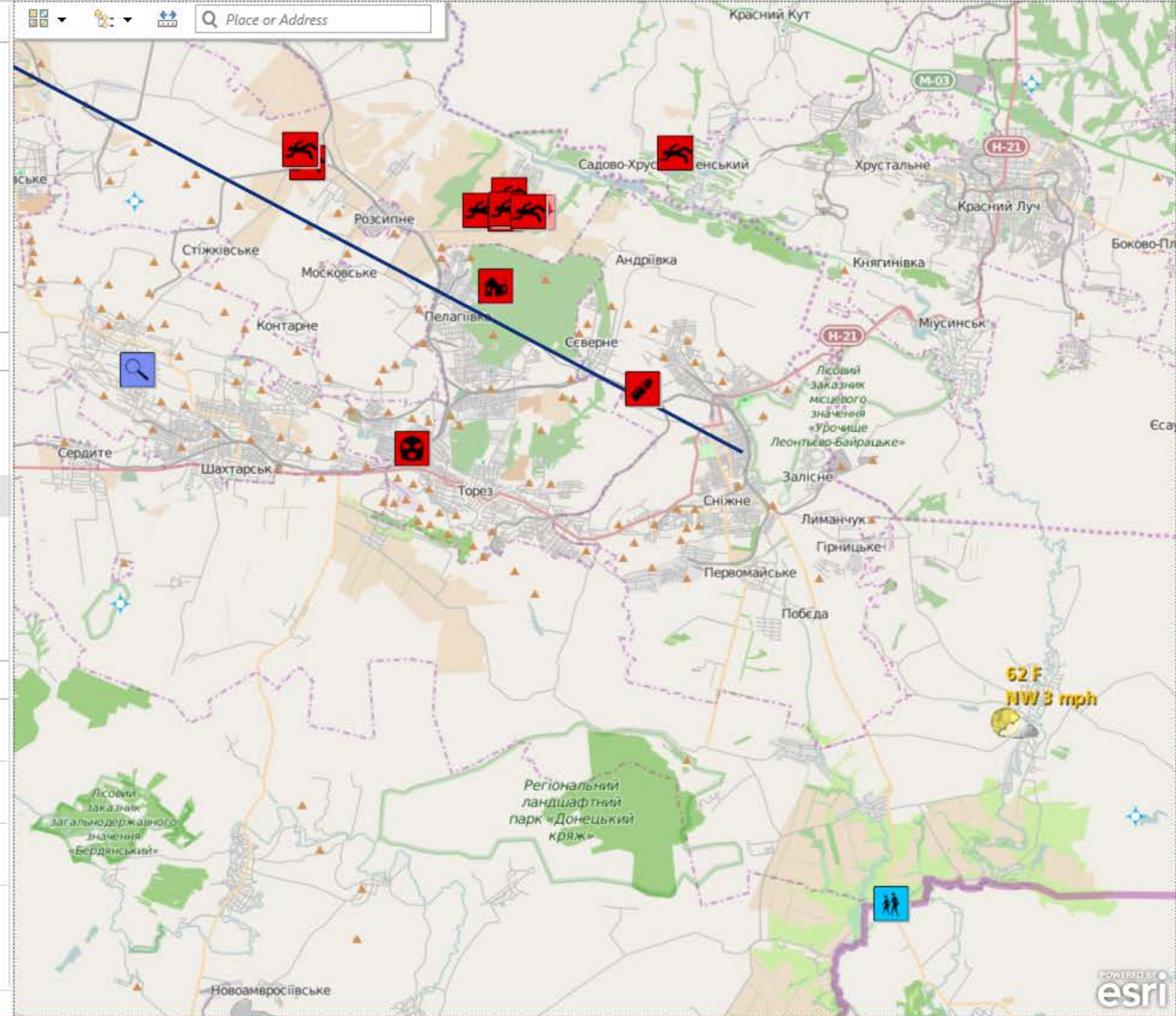
298

Victim Nationality



Flight Timeline

- 9M-MRD debris falls near Hrabove, Donetsk Oblast
- Ukraine ATC reports lost contact with 9M-MRD
- 9M-MRD request FL350, Ukraine ATC assigns FL330



**3**

# **Content Management**





Folders

- NEW DELETE
- mh17\_esri (Home)
- AERO
- DEMOGRAPHICS
- DIPLOMACY
- IMAGERY
- METOC
- MH17
- OPERATIONS**
- SOCIAL MEDIA
- STORYMAPS
- UKRAINE

Show

- All
- Maps
- Layers
- Scenes
- Apps
- Tools
- Files

+ Add Item Create Share Delete Move Change Owner

<input type="checkbox"/>	Title	Type	Modified	Shared
<input type="checkbox"/>	Debris Range Rings	Tile Layer	Jul 19, 2014	Organization
<input type="checkbox"/>	Debris_Range_Rings	Service Definition	Jul 19, 2014	Not Shared
<input type="checkbox"/>	Debris_Range_Rings	Feature Layer	Jul 19, 2014	Not Shared
<input type="checkbox"/>	Map_Notes	Feature Layer	Jul 21, 2014	Organization
<input type="checkbox"/>	Map_Notes	Service Definition	Jul 21, 2014	Not Shared
<input type="checkbox"/>	Operations in Ukraine	Web Map	Jul 23, 2014	Organization
<input type="checkbox"/>	Operations View and Situational Awareness	Operation View	Jul 22, 2014	Organization
<input type="checkbox"/>	Situational Awareness and Operations View	Web Mapping Application	Jul 22, 2014	Organization
<input type="checkbox"/>	Situational Awareness and Operations View	Web Map	Jul 22, 2014	Organization

1 - 9 of 9 results



Legend



About



Layers

# Social Media and Languages Spoken in the Ukraine

Zip Code, city, etc.



## Legend

### Instagram



Flickr photos filtered by: mh17








Twitter tweets filtered by: mh17

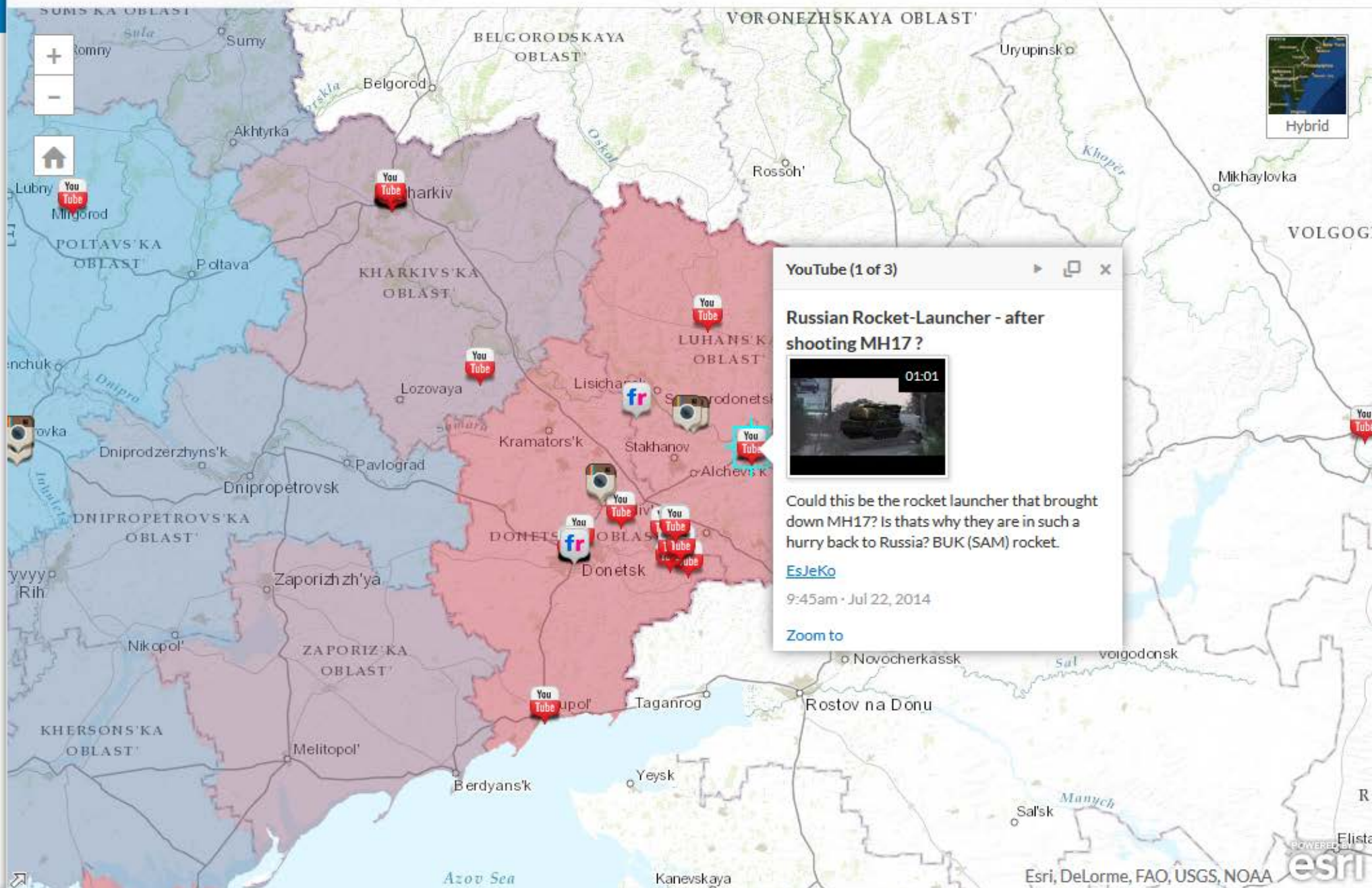


YouTube videos filtered by: mh17




Russian Language Spoken (% by province or oblast)

-  < 11%
-  11% - 37%
-  37% - 64%
-  64% - 90%
-  > 90%



YouTube (1 of 3)

### Russian Rocket-Launcher - after shooting MH17?



01:01

Could this be the rocket launcher that brought down MH17? Is that why they are in such a hurry back to Russia? BUK (SAM) rocket.

[EsJeKo](#)

9:45am · Jul 22, 2014

[Zoom to](#)

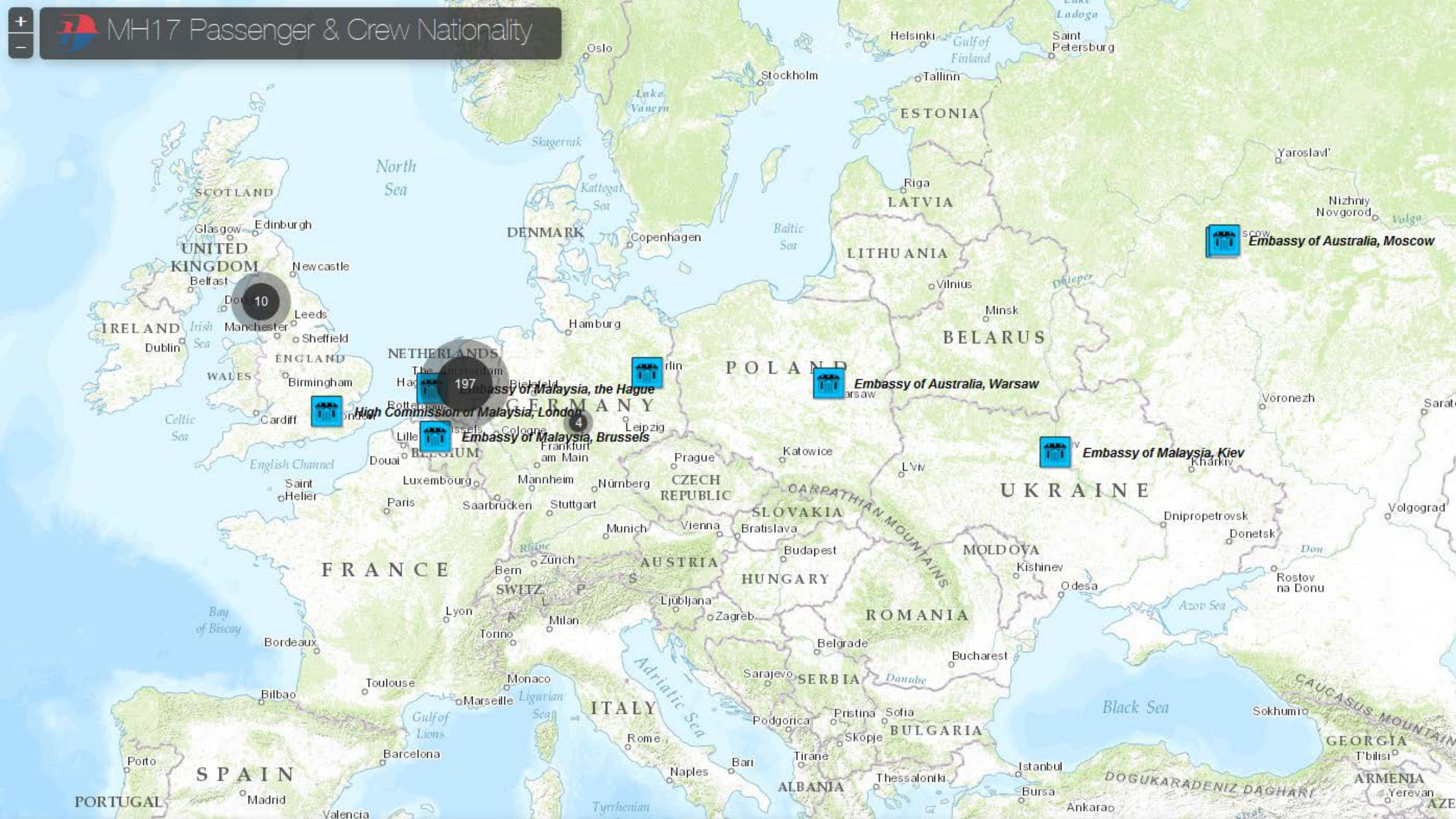


**4**

**Continuous User  
Engagement**



# MH17 Passenger & Crew Nationality



**5**

**Mission Specific App's**



# Post-Incident Imagery and Analysis

Presents pre-incident and post-incident imagery. Image analysts can examine the imagery for debris and other useful intelligence.

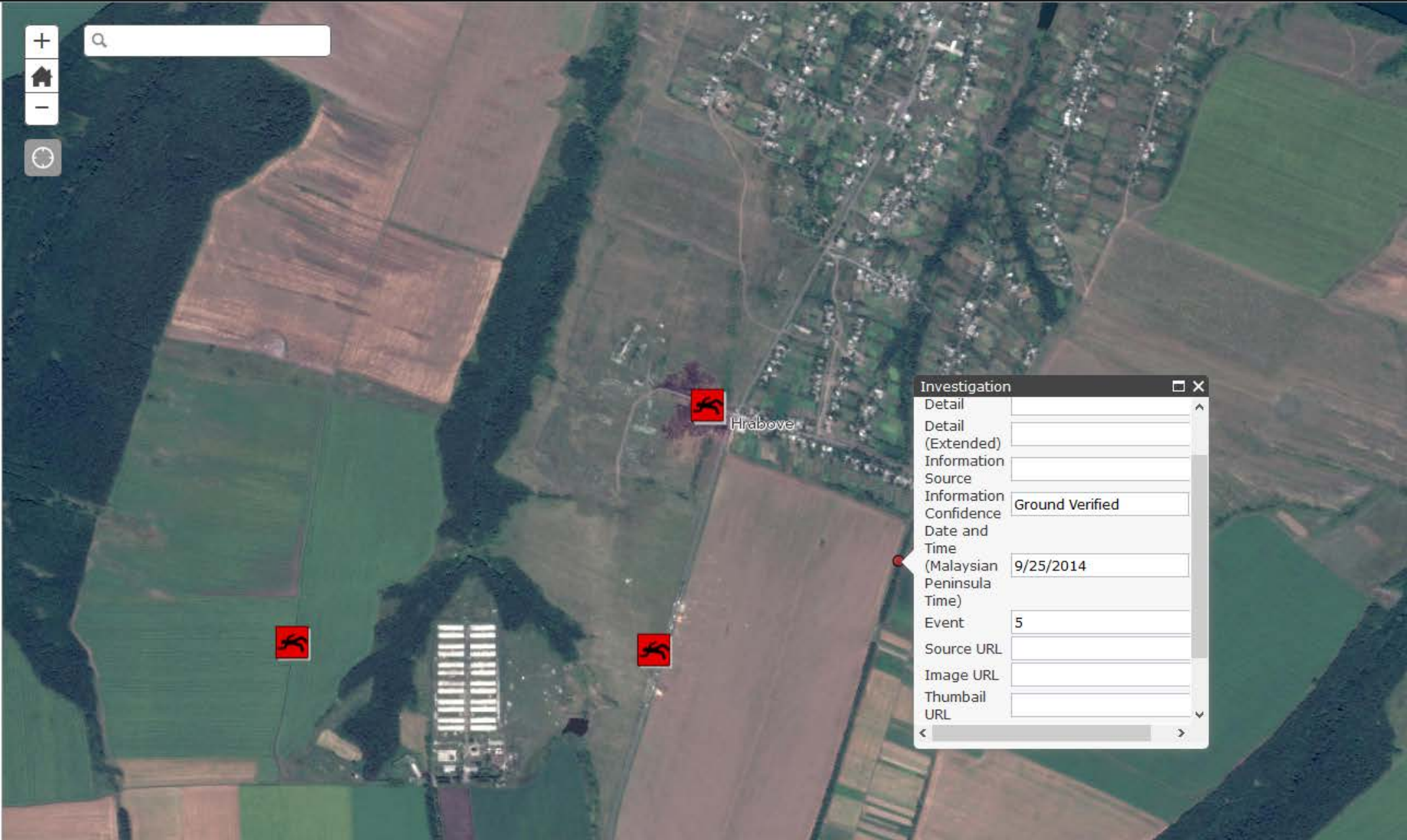
vicinity

Roadblock

Roadblock

Investigation

Investigation



Investigation

Detail	
Detail (Extended)	
Information Source	
Information Confidence	Ground Verified
Date and Time (Malaysian Peninsula Time)	9/25/2014
Event	5
Source URL	
Image URL	
Thumbnail URL	



**6**

**Empower the User**

# Crisis in the Crimea: The Showdown Between Ukraine and Russia

A story map [f](#) [t](#) [g](#)

Following a change of government in Ukraine, Russian forces effectively seized control of the Crimea, an autonomous republic with historical ties to Russia. Explore locations and events in Crimea, and language differences in Crimea and throughout Ukraine.



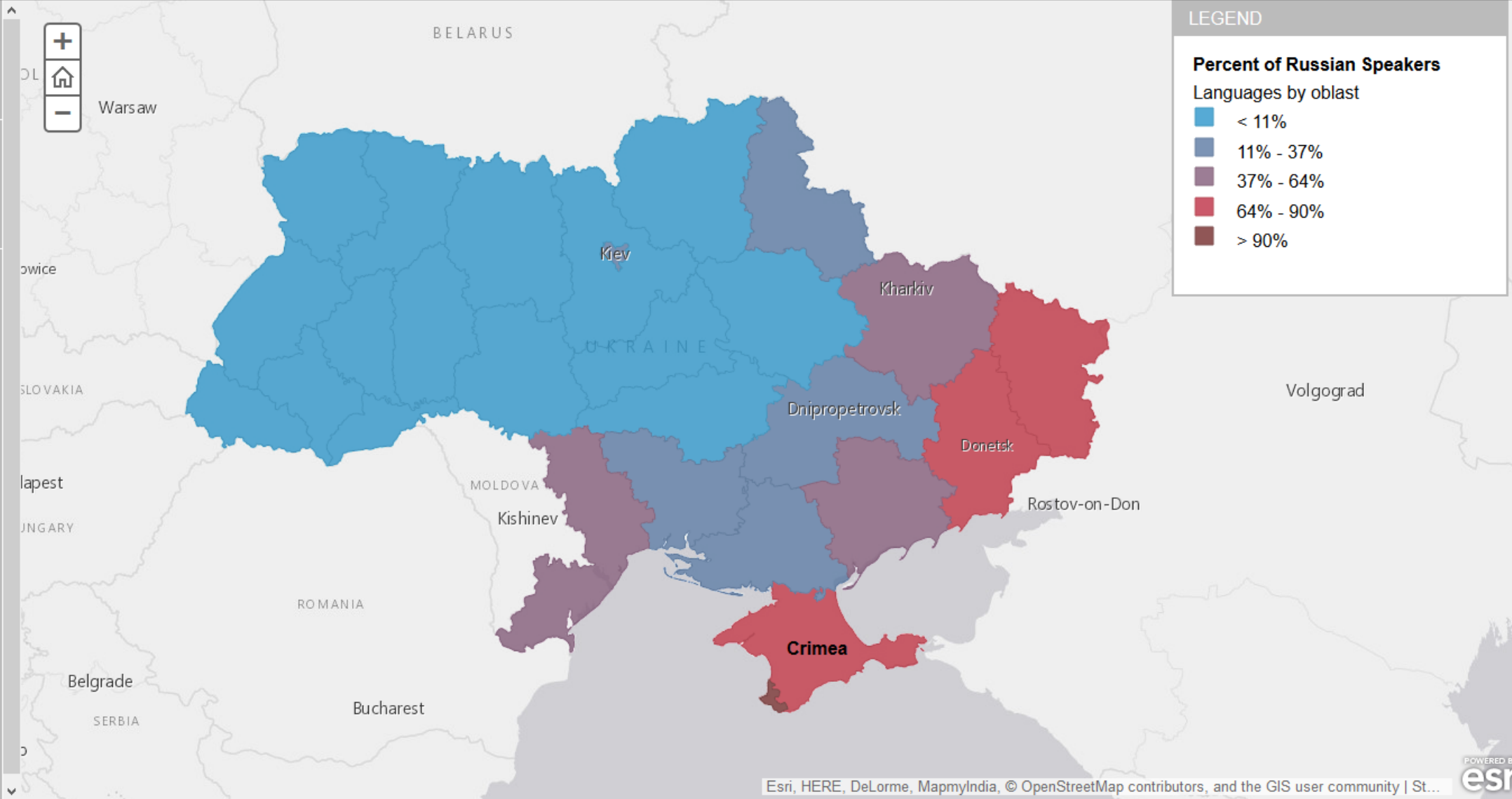
**1** Crimea: geography and hot spots

**2** Crimea: Russian majority, but diverse ethnicity

**3** Ukraine: Russians in the east and south

Ukraine's 2001 census--the most recent conducted by the nation--reveals a dramatic difference between eastern Ukraine, where Russian-speakers predominate, and its western regions, where Ukrainian is the primary language and allegiances favor European Union over Russia.

Tap the map for additional detail.



**Search for Layers**

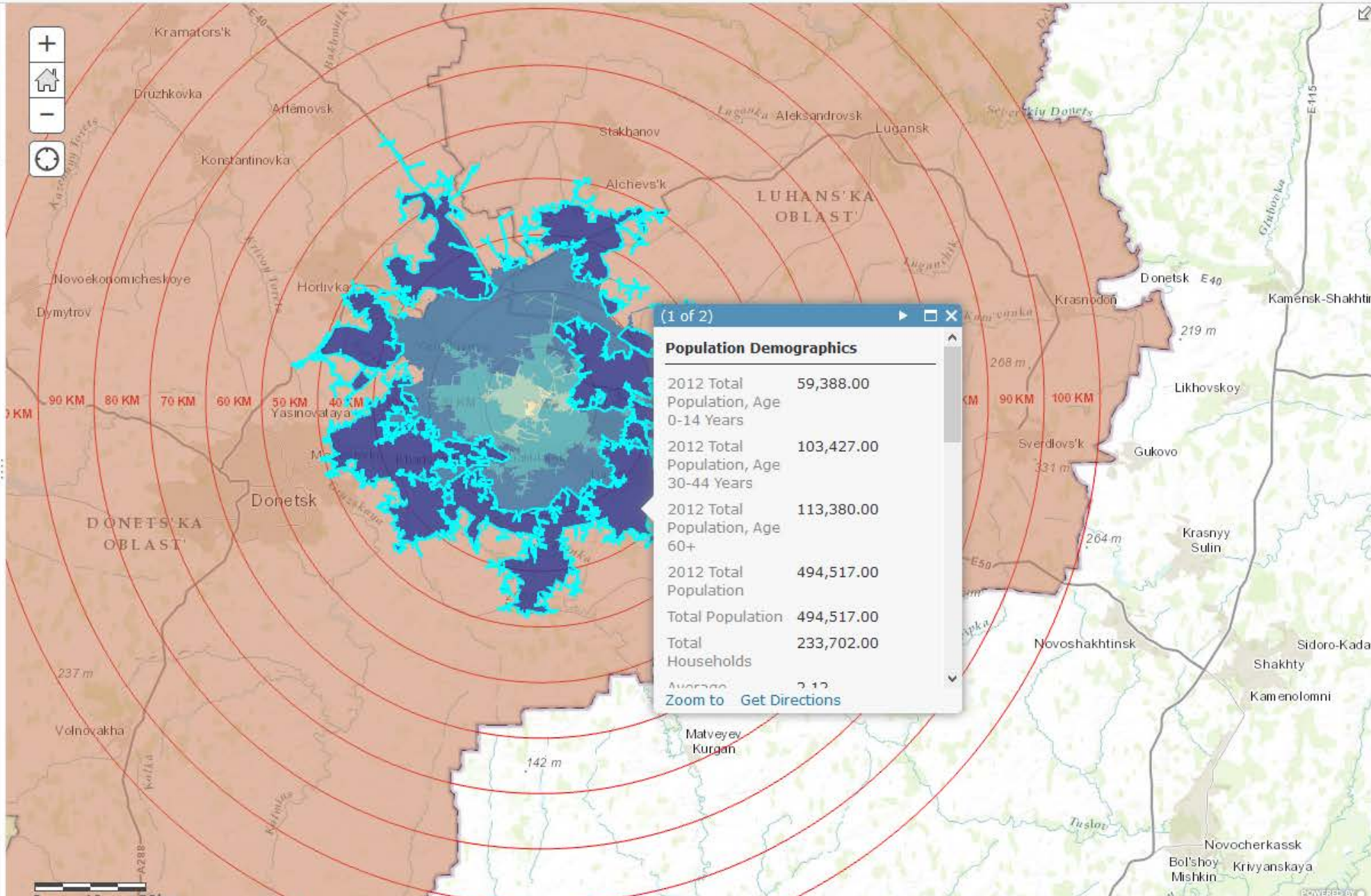
Find:

In:

Within map area

**626 Results Found**

- Trilhas em Unidades de Conservação\_IBGE-INEA (Feat by SIG\_CRHBG)
- Pontos cotados\_IBGE-INEA (Features) by SIG\_CRHBG
- BW\_SF\_Roads (Features) by geog467.redteam\_JMU
- Housing (Features) by ISRAEL\_CBS\_GIS
- Subestação de Energia\_EA (Features) by SIG\_CRHBG
- Sistema Viário\_IBGE-INEA (Features) by SIG\_CRHBG
- EnterpriseZone (Features) by alexbaker
- Label Route 180 (Features) by LynnatUMM
- LPS OSNI 50k Vector Water Text (Features) by SpatialNI\_Admin
- L Tsunami Inundation Scenario by Employment
- Toponímias\_IBGE-INEA (Features) by SIG\_CRHBG
- BW\_SF\_Streams (Features) by geog467.redteam\_JMU
- Student\_Demographics (Features) by styxdvr



(1 of 2)

**Population Demographics**

2012 Total Population, Age 0-14 Years	59,388.00
2012 Total Population, Age 30-44 Years	103,427.00
2012 Total Population, Age 60+	113,380.00
2012 Total Population	494,517.00
Total Population	494,517.00
Total Households	233,702.00
Average	2.12

[Zoom to](#) [Get Directions](#)

DONE ADDING LAYERS





# National Security Mission Space

**Complexity  
Uncertainty  
Risk**

## Principles of Geospatial Support

1. Embedded GIS Team
2. Agile Workflows
3. Content Management
4. Continuous User Engagement
5. Mission Specific App's
6. Empower the User

# Organisational Agility

**Flexibility  
Adaptability  
Innovation  
Resilience  
Robustness  
Responsiveness**

*“ Without agile leaders who can recognize when things are not going as planned, challenge their own preconceptions, change their own behaviours, and shape those of their subordinates, it will be impossible to increase the agility of organizations or forces.”*

*C2 by Design: A Handbook for Putting Command and Control Agility Theory Into Practice  
US DoD, Command & Control Research Program, 2014*



esri

Understanding our world.