



This Briefing is Classified

UNCLASSIFIED

NORTHCOM

SAGE 101

Chris Mayfield  
NORAD-NORTHCOM J664  
SPAWAR Pacific

Current as of:  
27 JUN 15







1 : 1,328,763



non-aux (2)

Image Input Data

Select Image Times Remarks Identifiers Amplifying Data

Name: Coastie

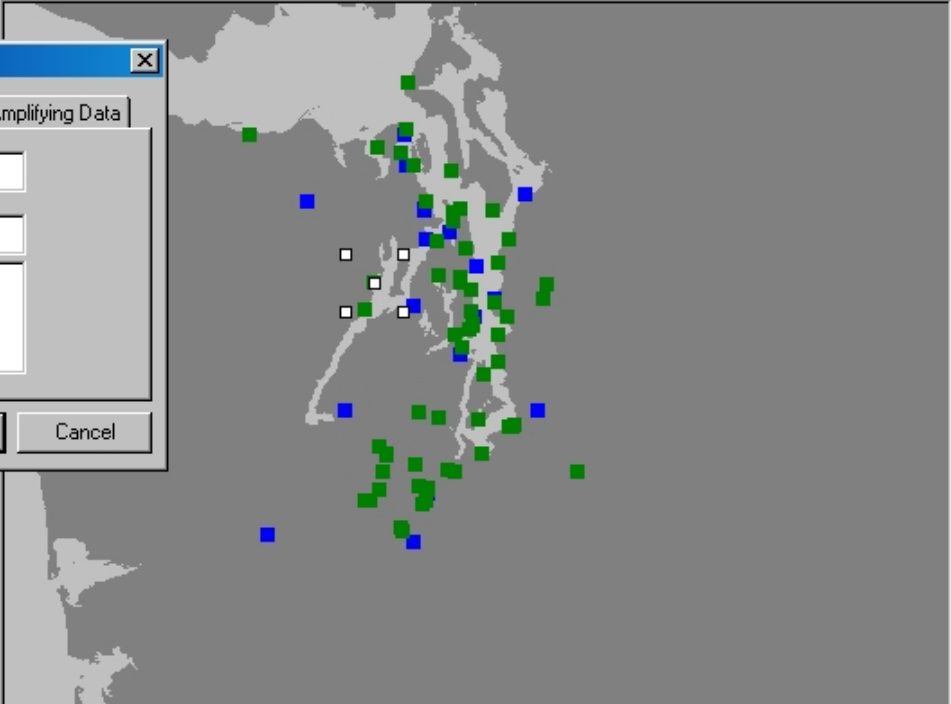
Source: Joe Coastie

Description: H:206.220.7237

OK

Cancel

<input checked="" type="checkbox"/>	
<input checked="" type="checkbox"/>	
<input checked="" type="checkbox"/>	
<input checked="" type="checkbox"/>	
<input checked="" type="checkbox"/>	
<input checked="" type="checkbox"/>	
<input checked="" type="checkbox"/>	
<input checked="" type="checkbox"/>	
<input checked="" type="checkbox"/>	
<input checked="" type="checkbox"/>	



SAGEEARTH.

NORTHCOM.

MI

GCCS  
Tracks

JRE Air

CG AIS  
Maritim  
e

User  
Content

Es Nuevo! Los 10.3!

ESRI ArcGIS  
Server

NORTHCOM  
LSI

REST

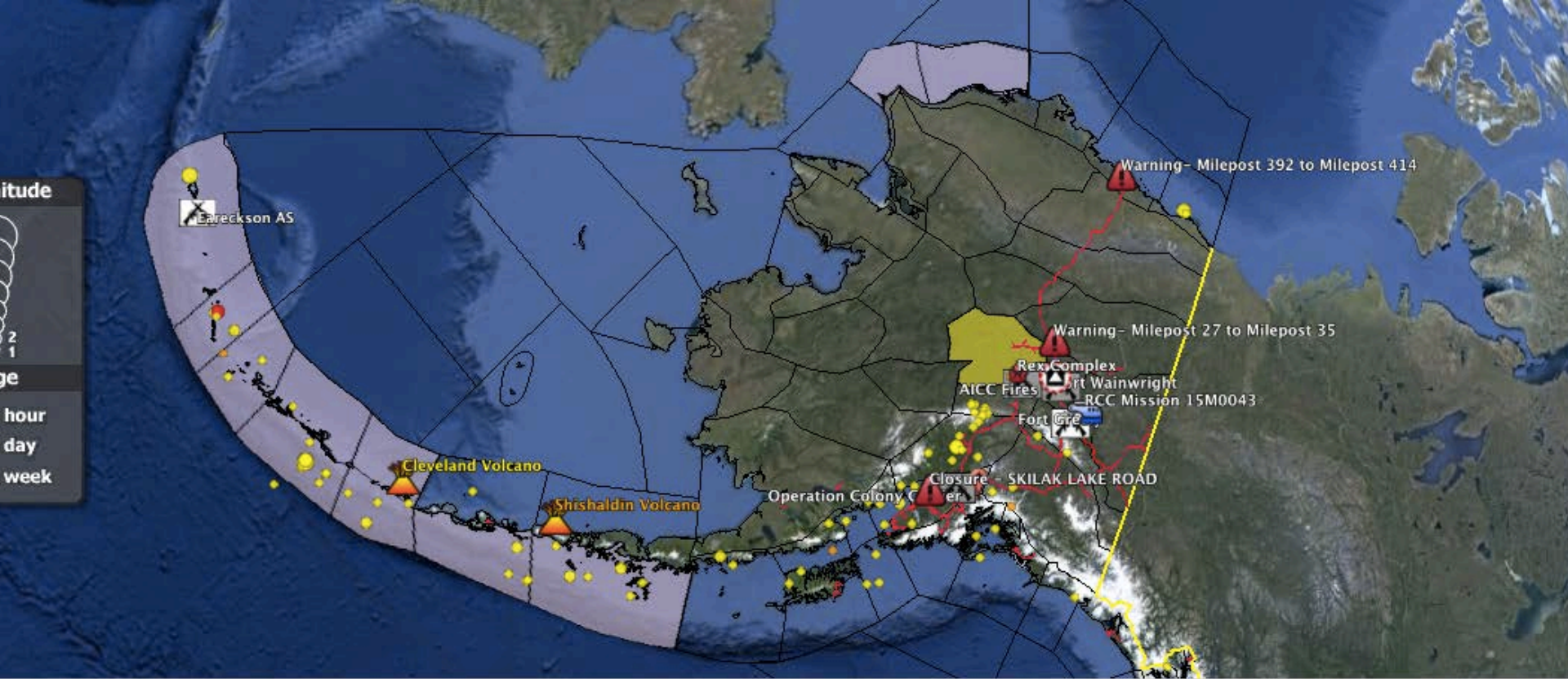
GeoJSON

KML/KMZ

CSV

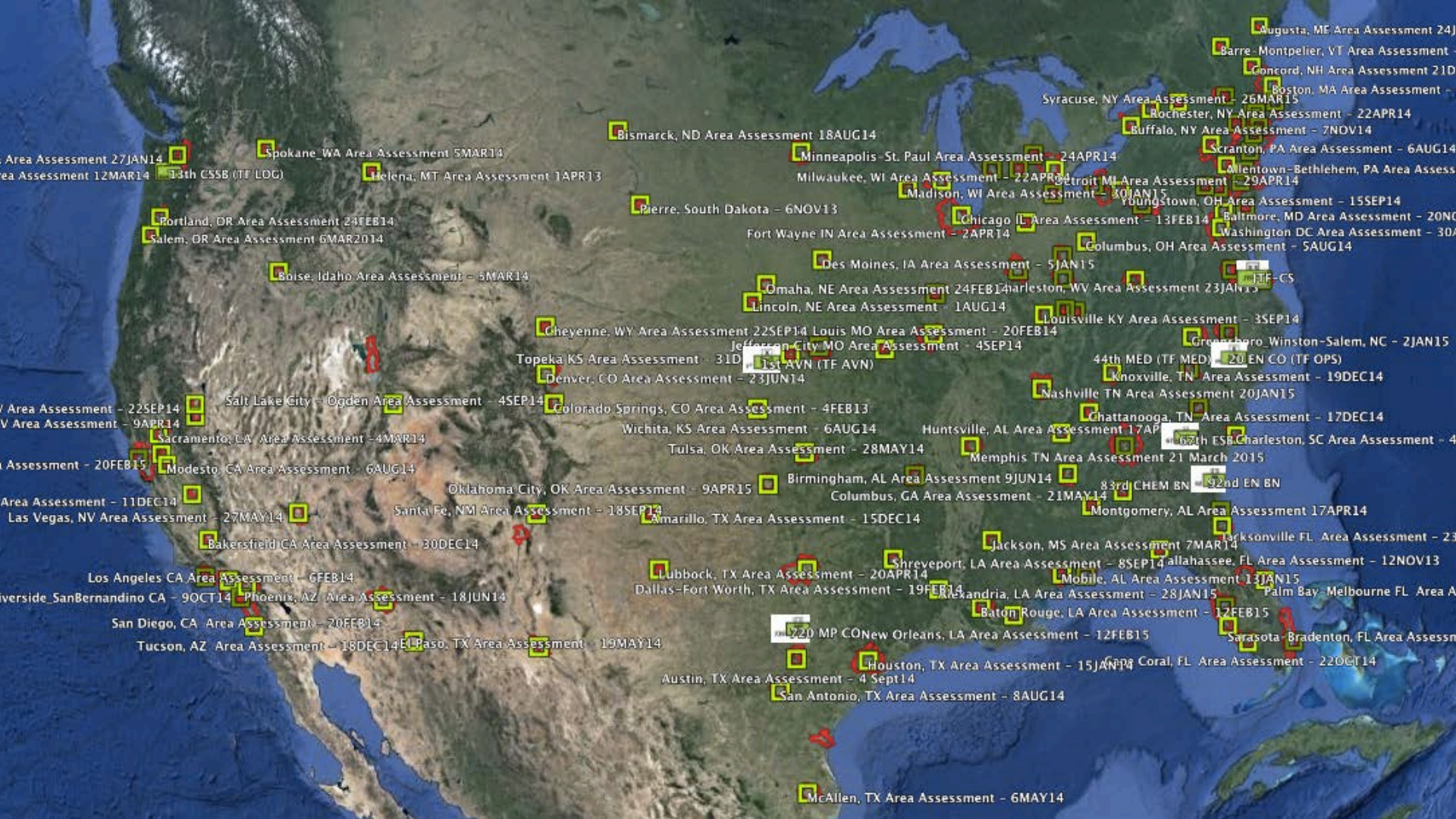
XML



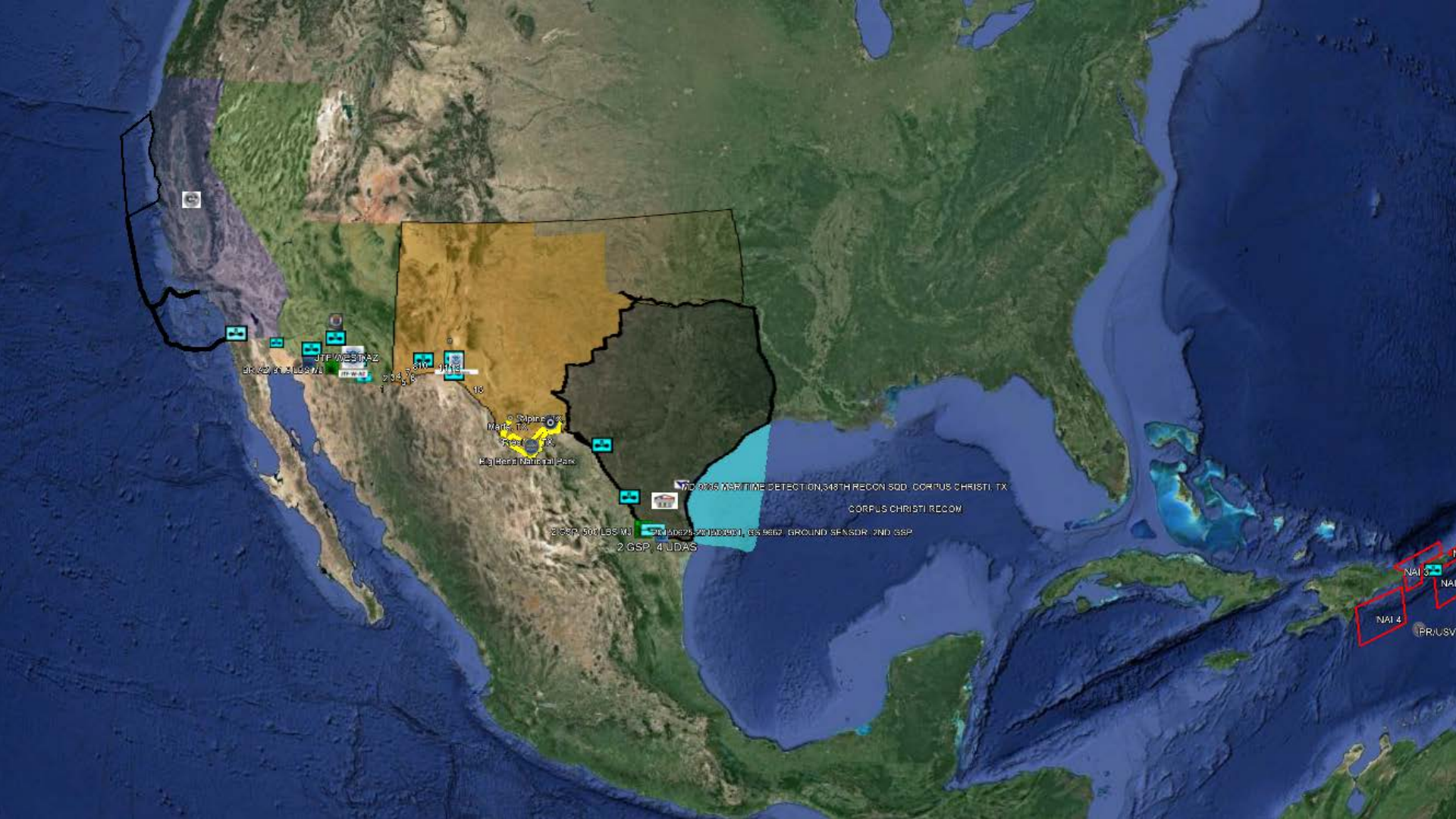


**BLUF:** SOCKEYE fire crews and air assets continue to be released and reassigned. STREET fire continues to be the priority fire in Alaska. A fire started near Cleveland Volcano is now 1,000 acres. REX COMPLEX fire at 6,000 acres and is comprised of KOBE and FISH CREEK fires. RCC





- Area Assessment 27JAN14
- Area Assessment 12MAR14
- 34th CSSB (TF LOG)
- Spokane\_WA Area Assessment 5MAR14
- Helena, MT Area Assessment 1APR13
- Portland, OR Area Assessment 24FEB14
- Salem, OR Area Assessment 6MAR2014
- Boise, Idaho Area Assessment - 5MAR14
- Area Assessment - 22SEP14
- Area Assessment - 9APR14
- Area Assessment - 20FEB15
- Area Assessment - 11DEC14
- Las Vegas, NV Area Assessment - 27MAY14
- Bakersfield CA Area Assessment - 30DEC14
- Los Angeles CA Area Assessment - 6FEB14
- Riverside, SanBernandino CA - 9OCT14
- Phoenix, AZ Area Assessment - 18JUN14
- San Diego, CA Area Assessment - 20FEB14
- Tucson, AZ Area Assessment - 18DEC14
- Paso, TX Area Assessment - 19MAY14
- Bismarck, ND Area Assessment 18AUG14
- Minneapolis - St. Paul Area Assessment - 24APR14
- Millwaukee, WI Area Assessment - 22APR14
- Madison, WI Area Assessment - 30JAN15
- Pierre, South Dakota - 6NOV13
- Fort Wayne IN Area Assessment - 2APR14
- Des Moines, IA Area Assessment - 5JAN15
- Omaha, NE Area Assessment 24FEB14
- Lincoln, NE Area Assessment - 1AUG14
- Cheyenne, WY Area Assessment 22SEP14
- Topeka KS Area Assessment - 31D
- Denver, CO Area Assessment - 23JUN14
- Salt Lake City - Ogden Area Assessment - 4SEP14
- Colorado Springs, CO Area Assessment - 4FEB13
- Wichita, KS Area Assessment - 6AUG14
- Tulsa, OK Area Assessment - 28MAY14
- Oklahoma City, OK Area Assessment - 9APR15
- Santa Fe, NM Area Assessment - 18SEP14
- Amarillo, TX Area Assessment - 15DEC14
- Lubbock, TX Area Assessment - 20APR14
- Dallas-Fort Worth, TX Area Assessment - 19FEB14
- Austin, TX Area Assessment - 4 Sept14
- San Antonio, TX Area Assessment - 8AUG14
- McAllen, TX Area Assessment - 6MAY14
- Augusta, ME Area Assessment 24J
- Barre - Montpelier, VT Area Assessment - 21D
- Concord, NH Area Assessment 21D
- Boston, MA Area Assessment - 26MAR15
- Syracuse, NY Area Assessment - 22APR14
- Rochester, NY Area Assessment - 22APR14
- Buffalo, NY Area Assessment - 7NOV14
- Scranton, PA Area Assessment - 6AUG14
- Allentown-Bethlehem, PA Area Assess
- Youngstown, OH Area Assessment - 15SEP14
- Chicago IL Area Assessment - 13FEB14
- Baltimore, MD Area Assessment - 20NOV14
- Washington DC Area Assessment - 30AUG14
- Columbus, OH Area Assessment - 5AUG14
- Green Bay, WI Area Assessment - 18APR14
- Des Moines, IA Area Assessment - 5JAN15
- Omaha, NE Area Assessment 24FEB14
- Lincoln, NE Area Assessment - 1AUG14
- Cheyenne, WY Area Assessment 22SEP14
- Topeka KS Area Assessment - 31D
- Denver, CO Area Assessment - 23JUN14
- Salt Lake City - Ogden Area Assessment - 4SEP14
- Colorado Springs, CO Area Assessment - 4FEB13
- Wichita, KS Area Assessment - 6AUG14
- Tulsa, OK Area Assessment - 28MAY14
- Oklahoma City, OK Area Assessment - 9APR15
- Santa Fe, NM Area Assessment - 18SEP14
- Amarillo, TX Area Assessment - 15DEC14
- Lubbock, TX Area Assessment - 20APR14
- Dallas-Fort Worth, TX Area Assessment - 19FEB14
- Austin, TX Area Assessment - 4 Sept14
- San Antonio, TX Area Assessment - 8AUG14
- McAllen, TX Area Assessment - 6MAY14
- Charleston, WV Area Assessment 23JAN15
- Louisville KY Area Assessment - 3SEP14
- Jefferson City MO Area Assessment - 4SEP14
- Greenboro, Winston, NC - 2JAN15
- 44th MED (TF MED) - 20 EN CO (TF OPS)
- Knoxville, TN Area Assessment - 19DEC14
- Nashville TN Area Assessment 20JAN15
- Chattanooga, TN Area Assessment - 17DEC14
- Huntsville, AL Area Assessment 17APR14
- 69th ESB Charleston, SC Area Assessment - 4
- Memphis TN Area Assessment 21 March 2015
- 83rd CHEM BN
- 92nd EN BN
- Montgomery, AL Area Assessment 17APR14
- Jackson, MS Area Assessment 7MAR14
- Jacksonville FL Area Assessment - 23
- Shreveport, LA Area Assessment - 8SEP14
- Tallahassee, FL Area Assessment - 12NOV13
- Mobile, AL Area Assessment 13JAN15
- Alexandria, LA Area Assessment - 28JAN15
- Palm Bay - Melbourne FL Area A
- Baton Rouge, LA Area Assessment - 12FEB15
- New Orleans, LA Area Assessment - 12FEB15
- Sarasota - Bradenton, FL Area Assess
- Coral, FL Area Assessment - 22OCT14



6

UTP WESTAZ  
816 421 81 2159 711

810 0113  
234 78

© Alpine  
Marfa, TX  
Frew, TX  
Big Bend National Park

770 0065 MARITIME DETECTION, 348TH RECON SQD - CORPUS CHRISTI, TX  
CORPUS CHRISTI RECOM

2 GRP, 500 LBS MA 51160828-701001401, 035 9667 GROUND SENSOR 2ND GSP  
2 GSP, 4 UDAS

NAI 3  
NAI 4  
PR/USV



JFO, Rhode Island  
Hartford Ct, Rhode Island

Grand Forks AFB  
FSA at Grand Forks AFB DoD-02  
North Dakota  
North Dakota SAR Planner DoD-03

Bethell, WA  
MA NIFE DoD-01-02

Ellsworth AFB DoD-01, EPLO at JFO

MA 7220SU-MN-DOD-04

MA 3348EM-VT-DOD-02  
MA 7220SU-OC-DOD-09

MA MA 12102506 DOD-04  
MA MA-11020801-DOD-01

Borise, ID DoD-04 AEG Activation  
Boise (KBO)

(KCYS) Cheyenne Airport  
DOD-03 AID SAR  
DoD-05, RW Resupply  
DR-DoD-02, DCE/E Activation  
DR-DoD-01, Air Planner

DCE R7 Activation

FEMA V RRCC

MA 3356EM PA DOD-03-01  
DOD-02, DLA DSCC Ohio  
MA 3349EM-MD-DOD-01

Herndon, VA  
MA DE-12102505-DOD-02.2  
MA 3359EM-VA-DOD-01-01

MAFFS REA ISO CO WFF (NIFE-01)

FEMA VII RRCC  
FEMA VII RRCC

DoD-01, FSA at Ft Campbell FSA

MA 3327EM-NC-DOD-01

Chico Municipal Airport, MA NIFE, DoD-09  
Chico, CA

Douglas Int Airport KCLT/KGYH Gr  
NIFE, DoD-02 Request for 4 EA MAFFS (Training)  
NIFE, DoD-02 Request For 4 EA C-130s for Training

11, 15B at Travis AFB, DoD-04, STRAT LIFT  
RIX RRCC RIX RRCC

Activate DCE/RC 6, DOD 01 MA 4117DR-OK-USAF EPLO Support, DOD-03  
MA 4117DR-OK-DOD-02

MA 7220SU-KY-DOD-05  
MA 3327EM-NC-DOD-05

Moore Naval Air Station Lemoore Naval Air Station, CA

Albuquerque, NM

DCE Region 6 Activation MA  
MA AL-12082201-DOD-02  
Maxwell AFB

Channel Islands, CA Channel Island ANG Station (KNTD)  
MA NIFE DoD-02 Phoenix-Mesa Gateway Airport, AZ (KIWA)

Abeline, TX

MA 4080DR-LA-DOD-02 DCE Atlanta, GA  
MA FL-12082201-DOD-01  
MA 4080DR-LA-DOD-04  
DCE R6 Activation MA LA13100401-DOD-01

MA 7220SU-TX-DOD-56

MA DOD-2 DCE R6 Activation MA  
MA DHHS-TX-DoD-01  
Laughlin AFB, Del Rio, TX



MA

MA

MA

MA NIFC-DoD-05

Colorado Springs (KCOS)

NIFC-DoD-03, Request 2 MAFFS C-130s for Training  
Peterson AFB

MA

MA

MA

KCOS Colorado Springs, CO.

DoD-03 302d AW MAFFS Certification

MA

MA

KCOS Colorado Springs, CO



## KCOS Colorado Springs, CO.



### MA NIFC DoD-01

Mission Complete - High Priority

**Description** 2 C-130 MAFFS Capable Aircraft  
**Incident Name** NIFC Activations 2012  
**Start Date** 250800ZJUN2012  
**End Date** 250800ZJUL2012  
**State** Wild Fire  
**Region** XX  
**AOR** NORTHCOM (NC)  
**Support Type** Federal Operations Support  
**Location Name** KCOS Colorado Springs, CO.  
**Location0** 384902.068N 1044211.614W  
**Obligation Authority** \$1.00  
**Estimated Expenditure**  
**Unit Assigned** 153rd AW & DCO/E Reg 10  
**EXORD #**  
**Task Status** Green - No Issues  
**Task % Complete** 100

#### Attachments

**Attachment 1 Name** [MAFFS RFA 23 JUN 2012 -- Final Signed.docx](#)  
**Attachment 1 Description**  
**Attachment 2 Name** [Chuck Wamak Approval for DoD-01 23 Jun 2012.docx](#)  
**Attachment 2 Description**

Directions: [To here](#) - [From here](#)





@john wark/reuters



WV NIFC DOD-11-32  
ST 5FG 100 I83857

Boish Air Tanker Base  
530034, AEG Act/Vol 01

Chicago, CA  
Chicago World Bankers  
NCCA DTCS7 I12079  
Chicago Air Attack Base  
McChesney Air Tanker Base  
RRF-03 Svt: Ltn Travis APF  
CHP Conv Lead I 17842

Lantoro Naval Air Station, CA  
Lantoro Naval Air Station

10TH SFG 033 I12079  
Chattanooga, TN  
MX NIFC DOD-02

AFSAUX CAP 10 I12079  
AF SOUTH RR 01 100679  
AF SOUTH RR 01 100679  
AFSAUX CAP 8 I12079  
AFSAUX CAP 8 I12079

MA DOD-2

Abilene, TX  
DORF TOC 55MMB  
DORF TOC 55MMB  
ATKHEL4 I 7503CAW 28 DCAB  
ATKHEL7 B 7503CAW 28 DCAB

MA DOD-2  
MA 7220SU TX DOD-33

NGORTU 507 W10047  
NGORTU 526 AB3026  
NGCXLEX08 AD4390  
NGAR 541 OG 18X142FA 142FA  
NGOKLX312 AD 229  
NGMS SDD3161 BN108AP  
DDE Region 6 Activation 24 MA

NGMS PL141 BN155IN15  
MA AL 2082201 DOD-02  
NSCHL6 A A16555

NSGLA210939  
NSA7 FDC - C10N117FA 142F

MA 4080GRALW DOD-02  
MA 4080GRALW DOD-02  
MA 4080GRALW DOD-02  
MA 4080GRALW DOD-02

MA 4080GRALW DOD-02  
MA 4080GRALW DOD-02  
MA 4080GRALW DOD-02  
MA 4080GRALW DOD-02

MA 4080GRALW DOD-02  
MA 4080GRALW DOD-02  
MA 4080GRALW DOD-02  
MA 4080GRALW DOD-02

MA 4080GRALW DOD-02  
MA 4080GRALW DOD-02  
MA 4080GRALW DOD-02  
MA 4080GRALW DOD-02

MA 4080GRALW DOD-02  
MA 4080GRALW DOD-02  
MA 4080GRALW DOD-02  
MA 4080GRALW DOD-02

MA 4080GRALW DOD-02  
MA 4080GRALW DOD-02  
MA 4080GRALW DOD-02  
MA 4080GRALW DOD-02

MA 4080GRALW DOD-02  
MA 4080GRALW DOD-02  
MA 4080GRALW DOD-02  
MA 4080GRALW DOD-02

MA 4080GRALW DOD-02  
MA 4080GRALW DOD-02  
MA 4080GRALW DOD-02  
MA 4080GRALW DOD-02

MA 4080GRALW DOD-02  
MA 4080GRALW DOD-02  
MA 4080GRALW DOD-02  
MA 4080GRALW DOD-02

MA 4080GRALW DOD-02  
MA 4080GRALW DOD-02  
MA 4080GRALW DOD-02  
MA 4080GRALW DOD-02

MA 4080GRALW DOD-02  
MA 4080GRALW DOD-02  
MA 4080GRALW DOD-02  
MA 4080GRALW DOD-02

MA 4080GRALW DOD-02  
MA 4080GRALW DOD-02  
MA 4080GRALW DOD-02  
MA 4080GRALW DOD-02

MA 4080GRALW DOD-02  
MA 4080GRALW DOD-02  
MA 4080GRALW DOD-02  
MA 4080GRALW DOD-02

MA 4080GRALW DOD-02  
MA 4080GRALW DOD-02  
MA 4080GRALW DOD-02  
MA 4080GRALW DOD-02

MA 4080GRALW DOD-02  
MA 4080GRALW DOD-02  
MA 4080GRALW DOD-02  
MA 4080GRALW DOD-02

NYNG 3327EM NC DOD-01  
NYNG 3327EM NC DOD-01  
NYNG 3327EM NC DOD-01  
NYNG 3327EM NC DOD-01

NYNG 3327EM NC DOD-01  
NYNG 3327EM NC DOD-01  
NYNG 3327EM NC DOD-01  
NYNG 3327EM NC DOD-01

NYNG 3327EM NC DOD-01  
NYNG 3327EM NC DOD-01  
NYNG 3327EM NC DOD-01  
NYNG 3327EM NC DOD-01

NYNG 3327EM NC DOD-01  
NYNG 3327EM NC DOD-01  
NYNG 3327EM NC DOD-01  
NYNG 3327EM NC DOD-01

NYNG 3327EM NC DOD-01  
NYNG 3327EM NC DOD-01  
NYNG 3327EM NC DOD-01  
NYNG 3327EM NC DOD-01

NYNG 3327EM NC DOD-01  
NYNG 3327EM NC DOD-01  
NYNG 3327EM NC DOD-01  
NYNG 3327EM NC DOD-01

NYNG 3327EM NC DOD-01  
NYNG 3327EM NC DOD-01  
NYNG 3327EM NC DOD-01  
NYNG 3327EM NC DOD-01

NYNG 3327EM NC DOD-01  
NYNG 3327EM NC DOD-01  
NYNG 3327EM NC DOD-01  
NYNG 3327EM NC DOD-01

NYNG 3327EM NC DOD-01  
NYNG 3327EM NC DOD-01  
NYNG 3327EM NC DOD-01  
NYNG 3327EM NC DOD-01

NYNG 3327EM NC DOD-01  
NYNG 3327EM NC DOD-01  
NYNG 3327EM NC DOD-01  
NYNG 3327EM NC DOD-01

NYNG 3327EM NC DOD-01  
NYNG 3327EM NC DOD-01  
NYNG 3327EM NC DOD-01  
NYNG 3327EM NC DOD-01

NYNG 3327EM NC DOD-01  
NYNG 3327EM NC DOD-01  
NYNG 3327EM NC DOD-01  
NYNG 3327EM NC DOD-01

NYNG 3327EM NC DOD-01  
NYNG 3327EM NC DOD-01  
NYNG 3327EM NC DOD-01  
NYNG 3327EM NC DOD-01

NYNG 3327EM NC DOD-01  
NYNG 3327EM NC DOD-01  
NYNG 3327EM NC DOD-01  
NYNG 3327EM NC DOD-01

NYNG 3327EM NC DOD-01  
NYNG 3327EM NC DOD-01  
NYNG 3327EM NC DOD-01  
NYNG 3327EM NC DOD-01

NYNG 3327EM NC DOD-01  
NYNG 3327EM NC DOD-01  
NYNG 3327EM NC DOD-01  
NYNG 3327EM NC DOD-01

NYNG 3327EM NC DOD-01  
NYNG 3327EM NC DOD-01  
NYNG 3327EM NC DOD-01  
NYNG 3327EM NC DOD-01

NYNG 3327EM NC DOD-01  
NYNG 3327EM NC DOD-01  
NYNG 3327EM NC DOD-01  
NYNG 3327EM NC DOD-01

NYNG 3327EM NC DOD-01  
NYNG 3327EM NC DOD-01  
NYNG 3327EM NC DOD-01  
NYNG 3327EM NC DOD-01

NYNG 3327EM NC DOD-01  
NYNG 3327EM NC DOD-01  
NYNG 3327EM NC DOD-01  
NYNG 3327EM NC DOD-01

NYNG 3327EM NC DOD-01  
NYNG 3327EM NC DOD-01  
NYNG 3327EM NC DOD-01  
NYNG 3327EM NC DOD-01

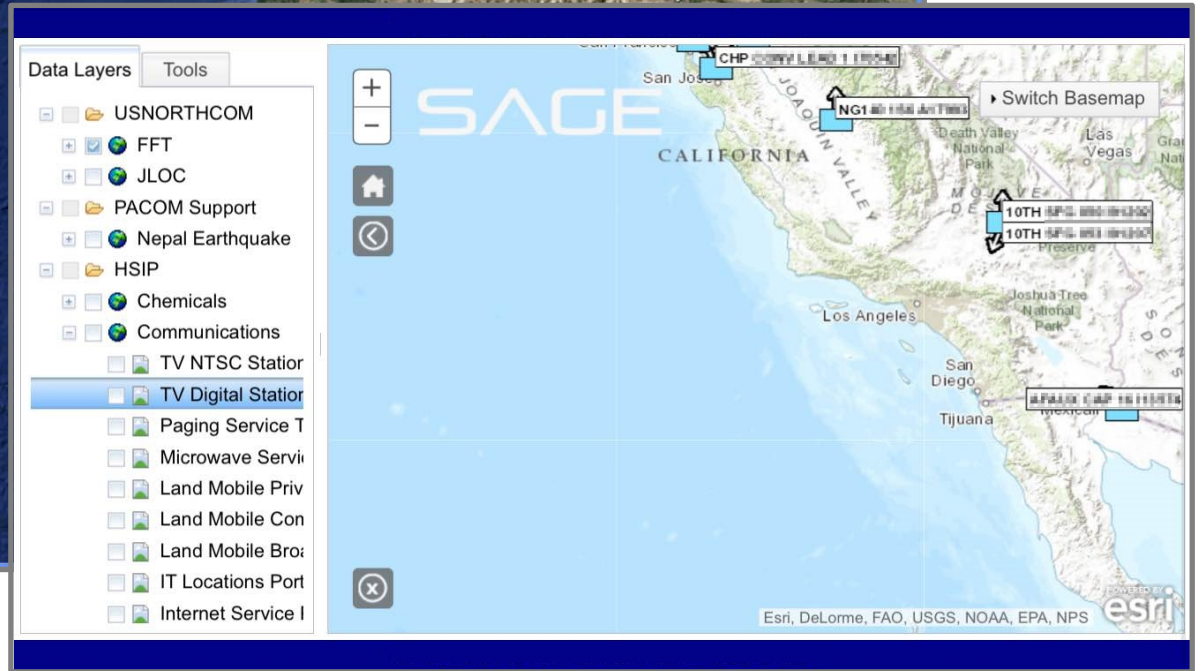
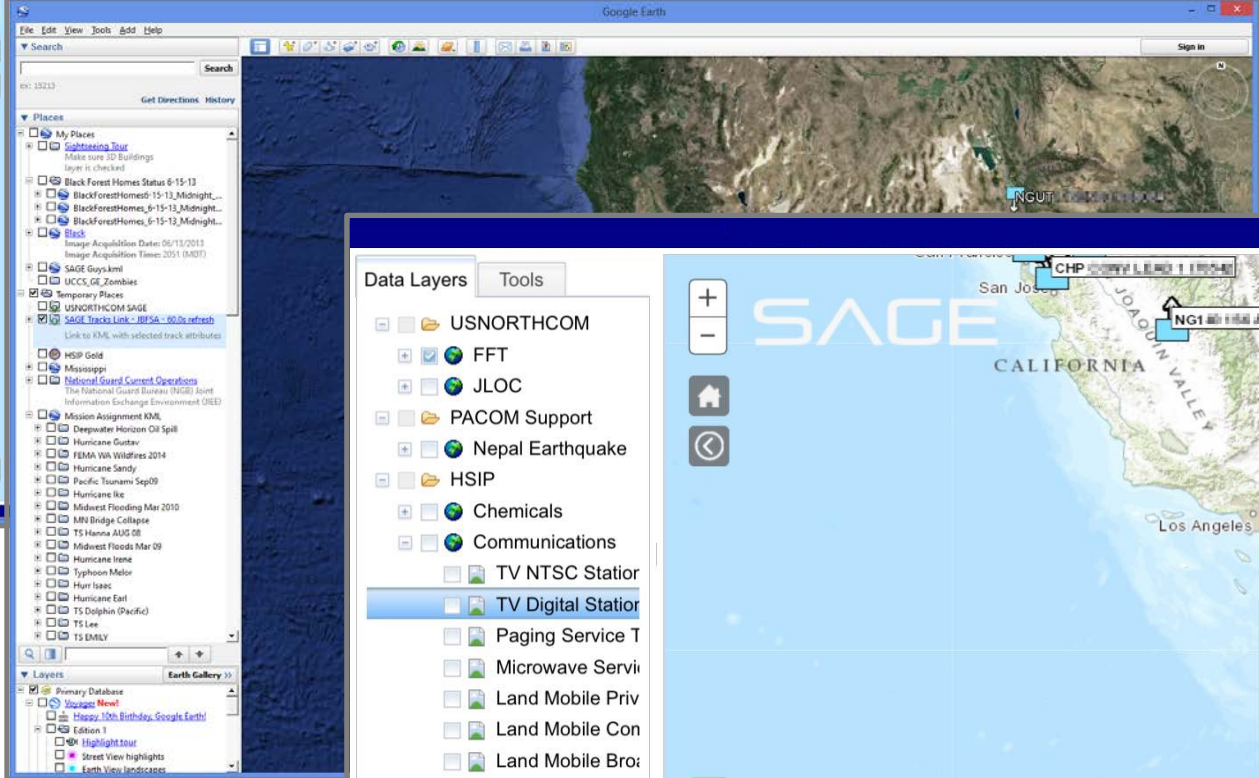
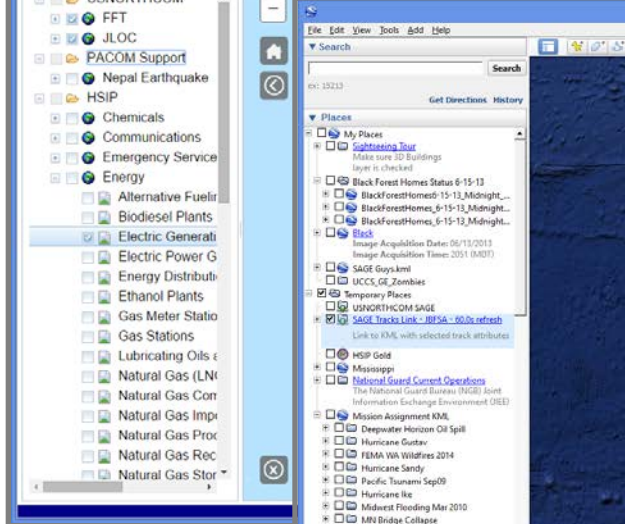
NYNG 3327EM NC DOD-01  
NYNG 3327EM NC DOD-01  
NYNG 3327EM NC DOD-01  
NYNG 3327EM NC DOD-01

NYNG 3327EM NC DOD-01  
NYNG 3327EM NC DOD-01  
NYNG 3327EM NC DOD-01  
NYNG 3327EM NC DOD-01

NYNG 3327EM NC DOD-01  
NYNG 3327EM NC DOD-01  
NYNG 3327EM NC DOD-01  
NYNG 3327EM NC DOD-01

NYNG 3327EM NC DOD-01  
NYNG 3327EM NC DOD-01  
NYNG 3327EM NC DOD-01  
NYNG 3327EM NC DOD-01







@cm\_mayFIeld

chris.mayFIeld@sage.northcom.mil

christopher.m.mayFIeld.civ@mail.  
mil

support@sage.northcom.mil