

Nepal Earthquake 2015

Information Debris: Make Sense of it All



National Security Summit

ESRI User Conference 2015, San Diego

International Centre for Integrated Mountain Development

Kathmandu, Nepal

ICIMOD



FOR MOUNTAINS AND PEOPLE

Nepal Earthquake 2015:

ICIMOD's Response

ICIMOD

FOR MOUNTAINS AND PEOPLE

➤ Relief Support

ICIMOD family well-being; Immediate relief support – neighborhood and ICIMOD program areas; Mobilizing funds and staff engagement

➤ Geo-Information

Nepal Disaster Relief and Recovery Information Platform

➤ Geo-hazard

Landslides, Landslide dammed lakes; Potential GLOFs; Ice Avalanche

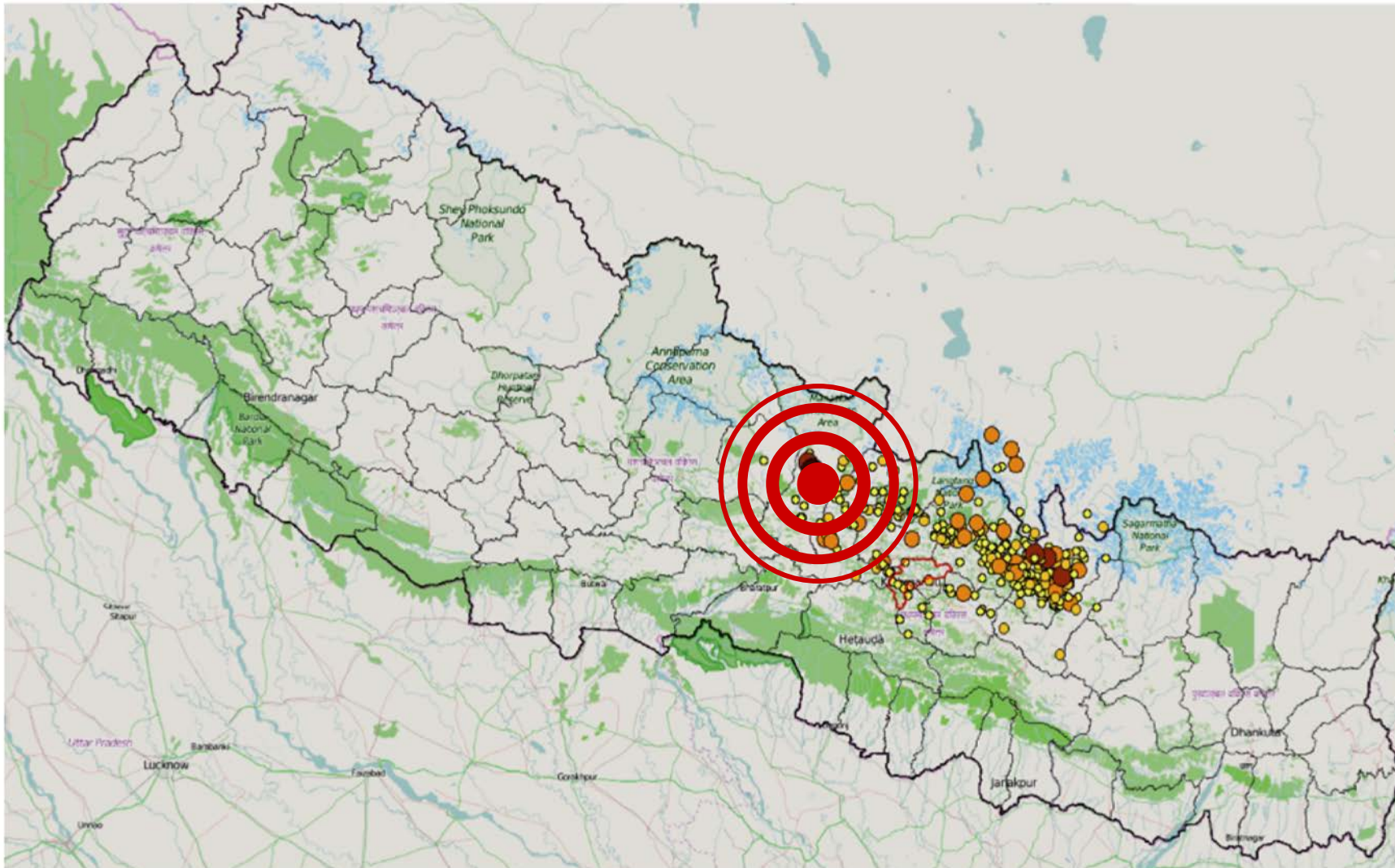
➤ Reconstruction

Build-back-better; reconstruction model, smart communities; private sector engagement



ICIMOD Headquarters
Kathmandu, Nepal

Nepal Earthquake 2015



7.8 magnitude
15 km deep



April 25, 2015
11:56 AM



Barpak,
Gorkha, Nepal
350+ aftershocks



8,856+ Total death
22,309+ Total injury



604,930+
houses destroyed
288,856+
houses damaged



2,000+
landslides mapped



10% GDP Loss

Nepal Earthquake 2015



7.8 magnitude
15 km deep



April 25, 2015
11:56 AM



Barpak,
Gorkha, Nepal
350+ aftershocks



8,856+ Total death
22,309+ Total injury



604,930+
houses destroyed
288,856+
houses damaged



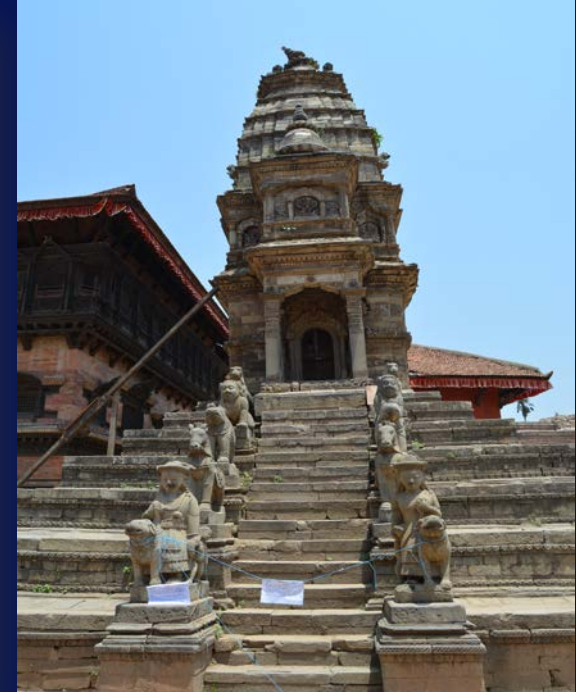
2,000+
landslides mapped



10% GDP Loss



Cultural Heritage – Pride of Nepal



Making a Difference



Disaster Response and Recovery – From information Perspective



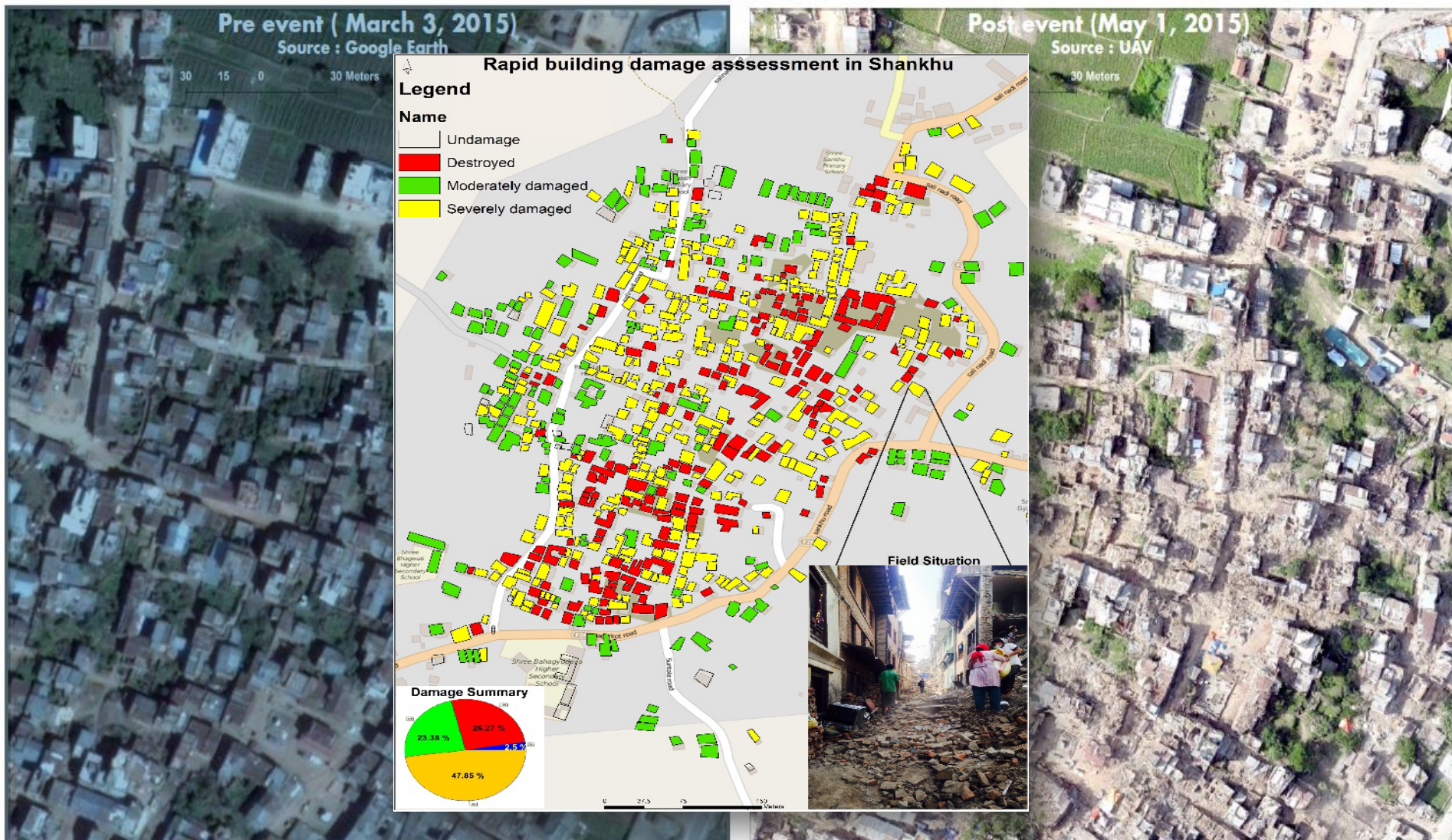
- Demand for information rise exponentially
- Massive amount of information - both producers and users
- Challenges in mainstreaming into the decisions
- Standard Operating Procedures (SoPs) for data collection



Collaboration is the Key

Sankhu Town:

One of the most damaged town in suburb of Kathmandu Valley



- International charter and Satellite data and information products
- UAV imaging
- Field data collection
- Mobile apps / Crowd sourcing
- Damage assessment
- WebGIS / Rapid response mapping

Sankhu Town:

One of the most damaged town in suburb of Kathmandu Valley

ICIMOD

FOR MOUNTAINS AND PEOPLE



Partnership with ESRI
Geographical Information System Platform

**Enabling Framework for
Disaster Response and
Recovery**

- International charter and Satellite data and information products
- UAV imaging
- Field data collection
- Mobile apps / Crowd sourcing
- Damage assessment
- WebGIS / Rapid response mapping

Disaster Recovery and Reconstruction Information Platform (<http://apps.geoportal.icimod.org/nddrip>)

ICIMOD

FOR MOUNTAINS AND PEOPLE



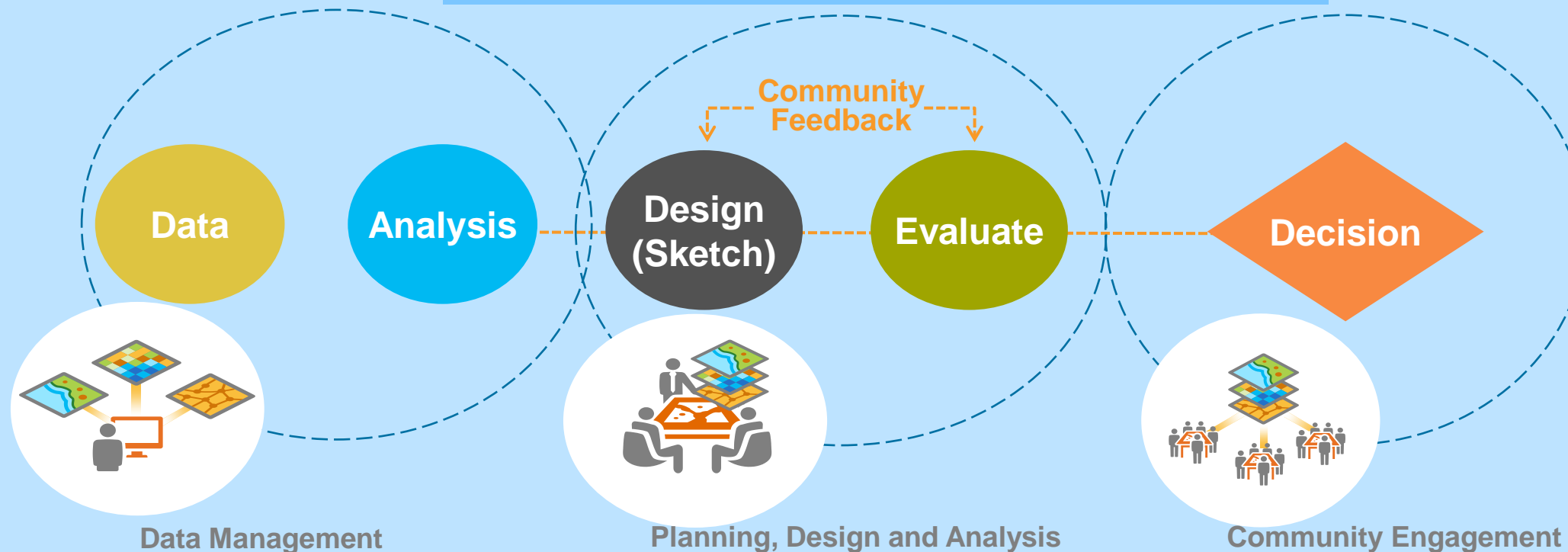
Geographic Profiles at multiple levels

- Integration of data and information at the national level
- Interactive maps, story map journal and data visualization
- A single Gateway for timely and credible information for decision support

Thematic Profiles

- Transparency, Accountability and Social Audit
- Information and as “public good”

Geodesign & GeoPlanner for Mountain Communities



Reconstruction

- Improved Community Resilience
- Strategic Resource Allocation
- Enhanced Vulnerability Awareness
- Decision Support and Collaboration

Supporting Government of Nepal towards Reconstruction and Rehabilitation

Smart Mountain Villages and Towns



- 17 Communities in five affected districts
- NDDRIP – to support reconstruction efforts
- Holistic reconstruction prototype model
- Emphasis on Livelihoods and Resilience
- Private sector engagement
- Potential for up-scaling and replication

HINDU KUSH HIMALAYAS

A Global Asset



ICIMOD

FOR MOUNTAINS AND PEOPLE



- Regional Intergovernmental organization established in 1983

- Integrated and Innovative solutions for sustainable mountain development

- Fostering transboundary and regional cooperation

- Regional platform for information and knowledge sharing and exchange

- Promote mountain development agenda in global form

CORE COMPETENCIES

Livelihoods

Ecosystem Services

Water and Air

Geospatial Solutions

Towards a Resilient Nepal

ICIMOD



Thank you for Your Kind Attention

Barpak GeoDesign Demo

ICIMOD

FOR MOUNTAINS AND PEOPLE

