



# Esri Petroleum GIS Conference

April 30–May 2, 2012 | Houston, Texas | [esri.com/pug](http://esri.com/pug)

## 60 Minutes with ArcGIS Online

**Bern Szukalski**

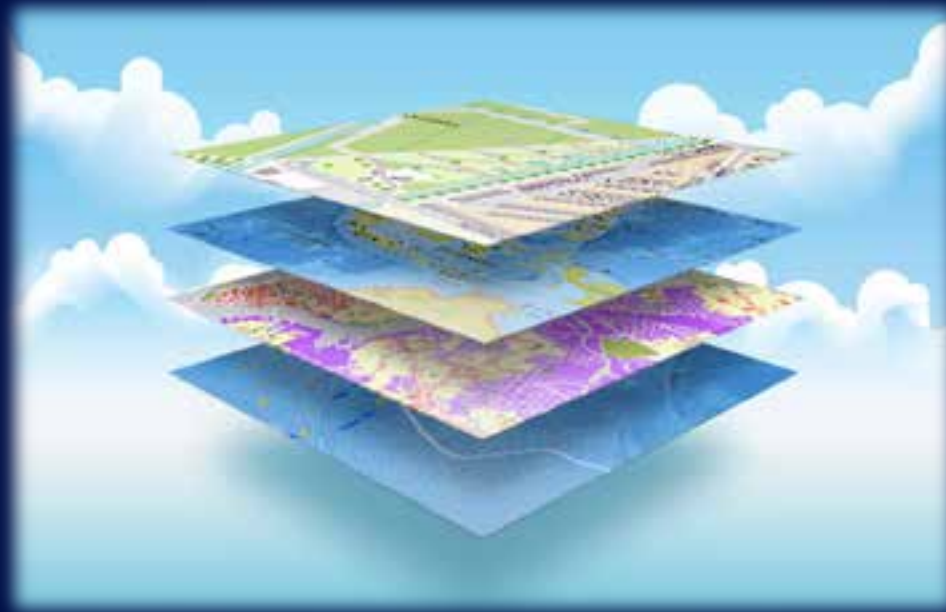
**@bernszukalski**

**[bszukalski@esri.com](mailto:bszukalski@esri.com)**



## What is ArcGIS Online?

A cloud-based, collaborative geospatial content management system for maps, apps, data, and other geographic information.



# What can I do using ArcGIS Online?

- **Create, store, manage your own maps, apps, and data with a personal ArcGIS Online account.**
- **Host your organization's geographic information in Esri's cloud with an ArcGIS Online subscription.**
- **Develop browser and mobile apps.**
- **More...**

# ArcGIS Online Includes

## Maps & Apps

- Basemaps, maps, layers, templates
- Ready-to-use (browser and mobile)
- Configurable apps, templates

## Developer tools

- APIs, SDKs for Web and mobile
- Location and other geoservices

## Communities

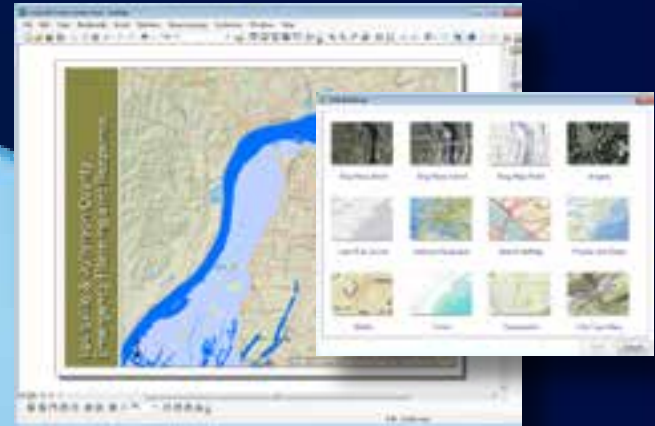
- Groups, organizations

# ArcGIS Online is part of ArcGIS

ArcGIS.com website



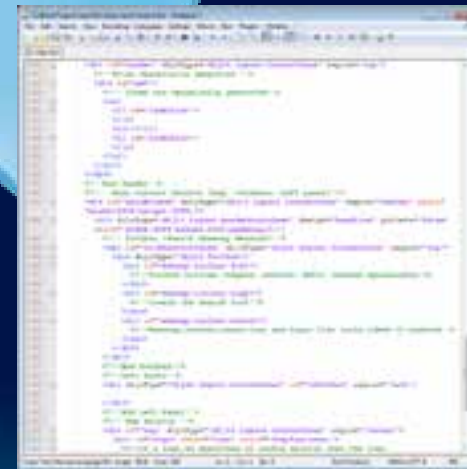
ArcGIS Desktop



ArcGIS Online

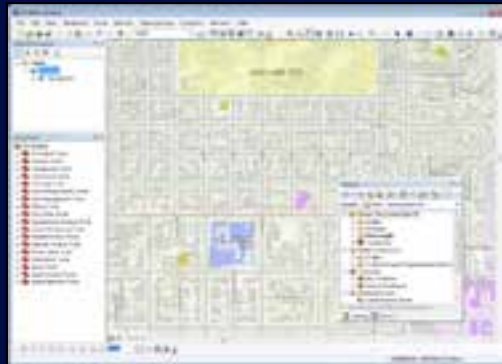


Web / Mobile



Developer

# Webmap Ecosystem



ArcMap

ArcGIS Explorer Desktop



Webmap

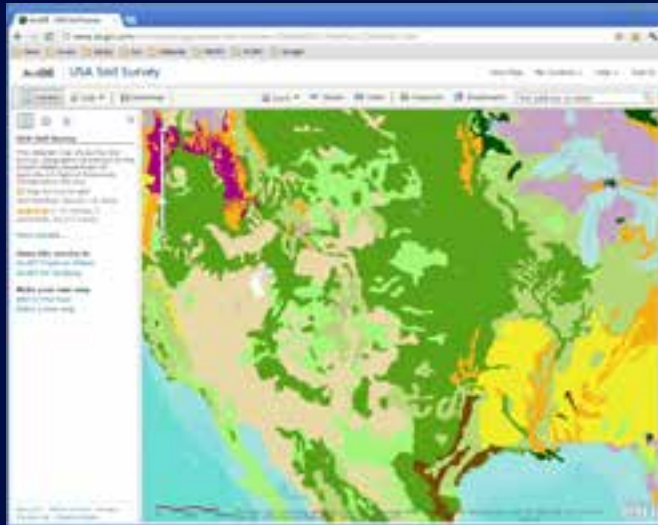


Mobile Apps



Configurable Viewers  
Custom Apps

# Map Viewer vs. Explorer Online



- JavaScript / HTML5
- App template gallery
- Host applications from app



- Silverlight
- Presentation authoring
- Queries
- Dashboards / Gadgets

# How can you use ArcGIS Online?

## Public use – personal account

Esri's public geocloud – free access and use

---

## Organization use – subscription

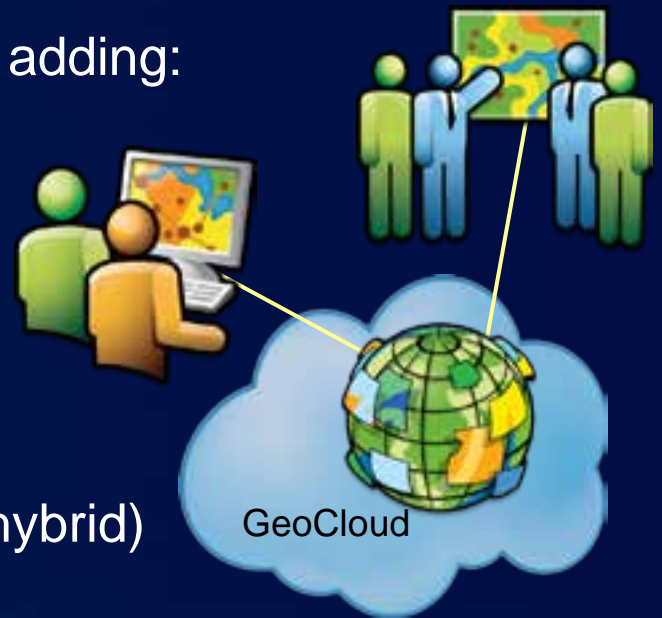
Enables an organization's geocloud by adding:

- Hosted services
  - User Account management
  - Site management tools
  - More...
- 

## Private use – Portal for ArcGIS

Common framework:

- On-premises, behind firewall (or hybrid)
- Maintained by user







**demonstration**



esri