

Using ArcReader to Share Maps: An Emergency Management Agency Application



Ashley Lesh

Towson University Center for GIS

Copyright © 2005 Towson University Center For Geographic Information Sciences

Center for Geographic Information Sciences



Distribution of GIS Data via ArcReader



- A growing need to get data out to people (public, clients, etc.)
- Adobe Acrobat Comparison
- Controlled Access – Version 9.0
- Good planning tool
- Keeps all officials on same page



ArcReader Sample Project Purpose

- Client: Maryland Emergency Management Agency (MEMA)
- Needing a means to distribute geographic data to emergency managers within each Maryland county and several specific municipalities (Ocean City, Annapolis)



Purpose

- MEMA has GIS capabilities
- Keeping in mind that not all jurisdictions have GIS departments and/or capabilities
- ArcReader was chosen to meet the needs of all jurisdictions.



Project Background

- Hazards
 - Coastal Storm
 - Dam Inundation Areas
 - 100-Year Floodplains
 - Radiological Exposure
 - Shoreline Erosion
 - Sinkhole-Prone Areas
 - Heavy Snow
 - Wildfire



Project Background

- Critical and state-owned and operated facilities

- Fire, Police, School, Medical
- Hazardous Waste Generators
- High Potential Loss Facilities (Dams, Power Plants, etc.)
- Lifeline Utilities (Water Sources, Pumping Stations, etc.)
- Transportation Facilities



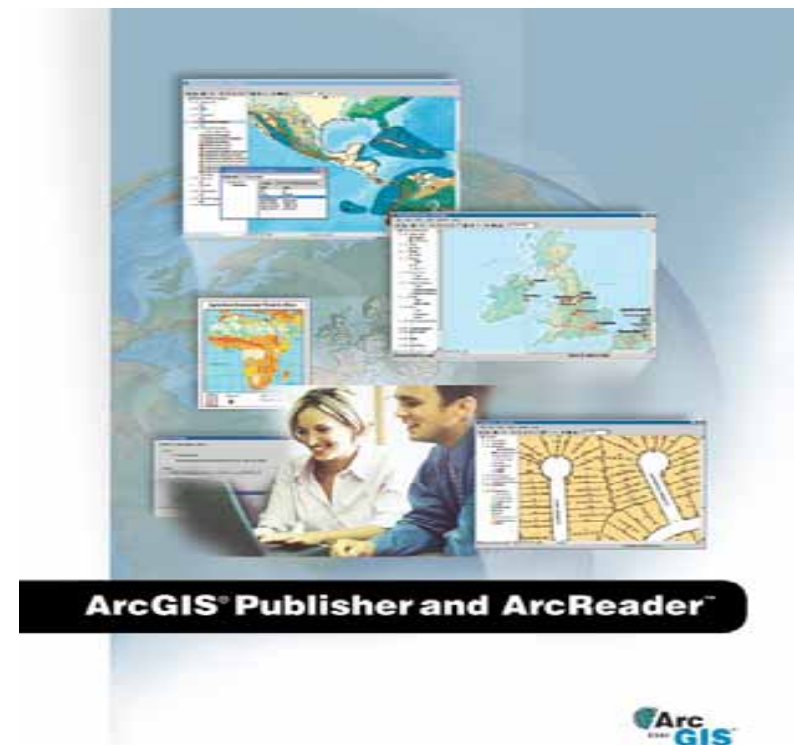
- Residential Areas

- At Risk
- No Risk



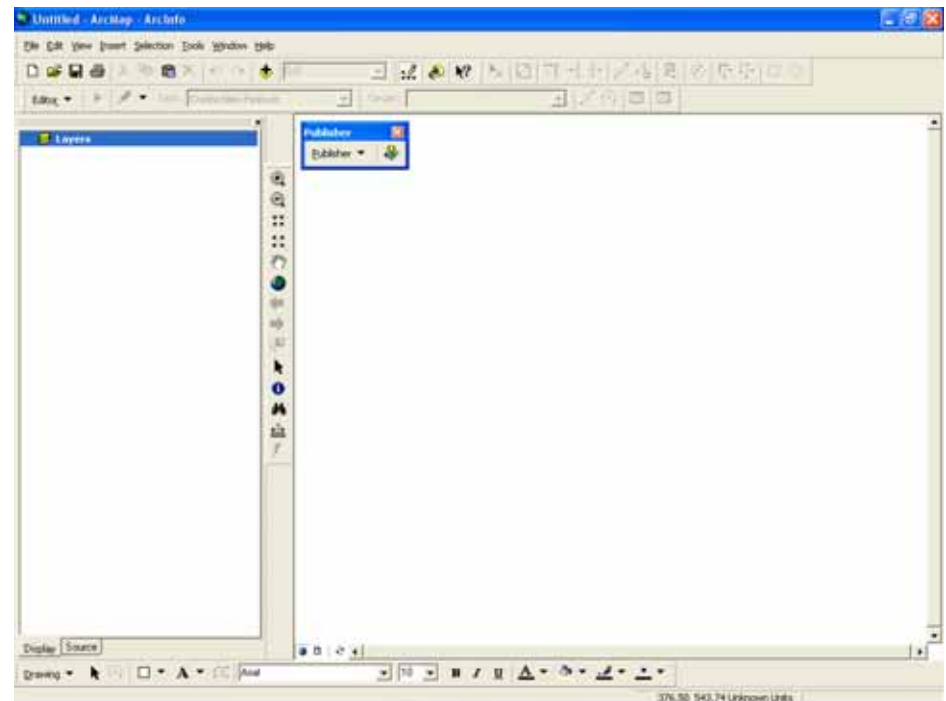
Overview of ArcReader 8.3

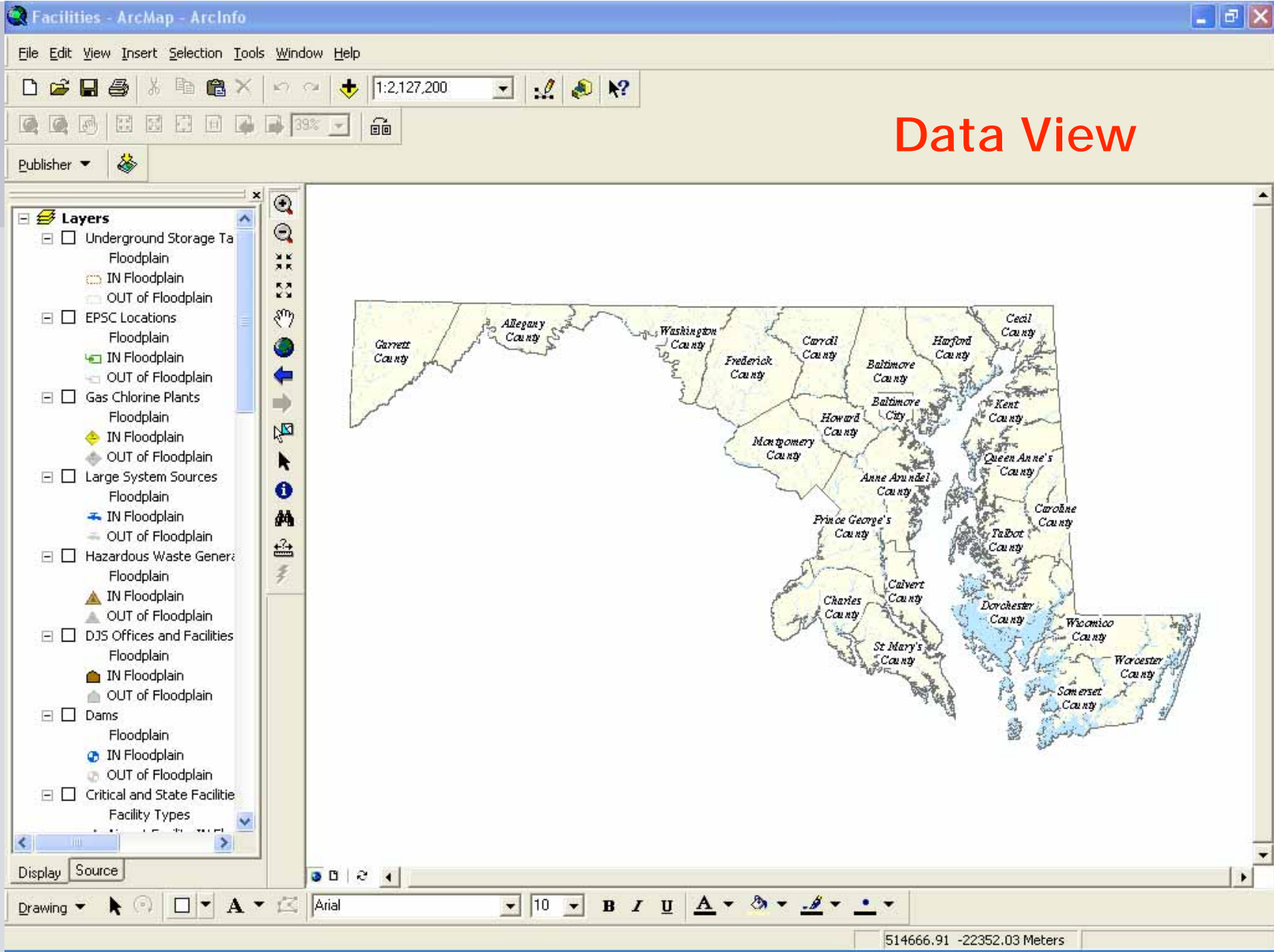
- ESRI Product
- Freely available
 - Downloadable
 - CD
 - ArcGIS Purchase
- Easy-to-use
- Windows-based
- ArcGIS look and feel



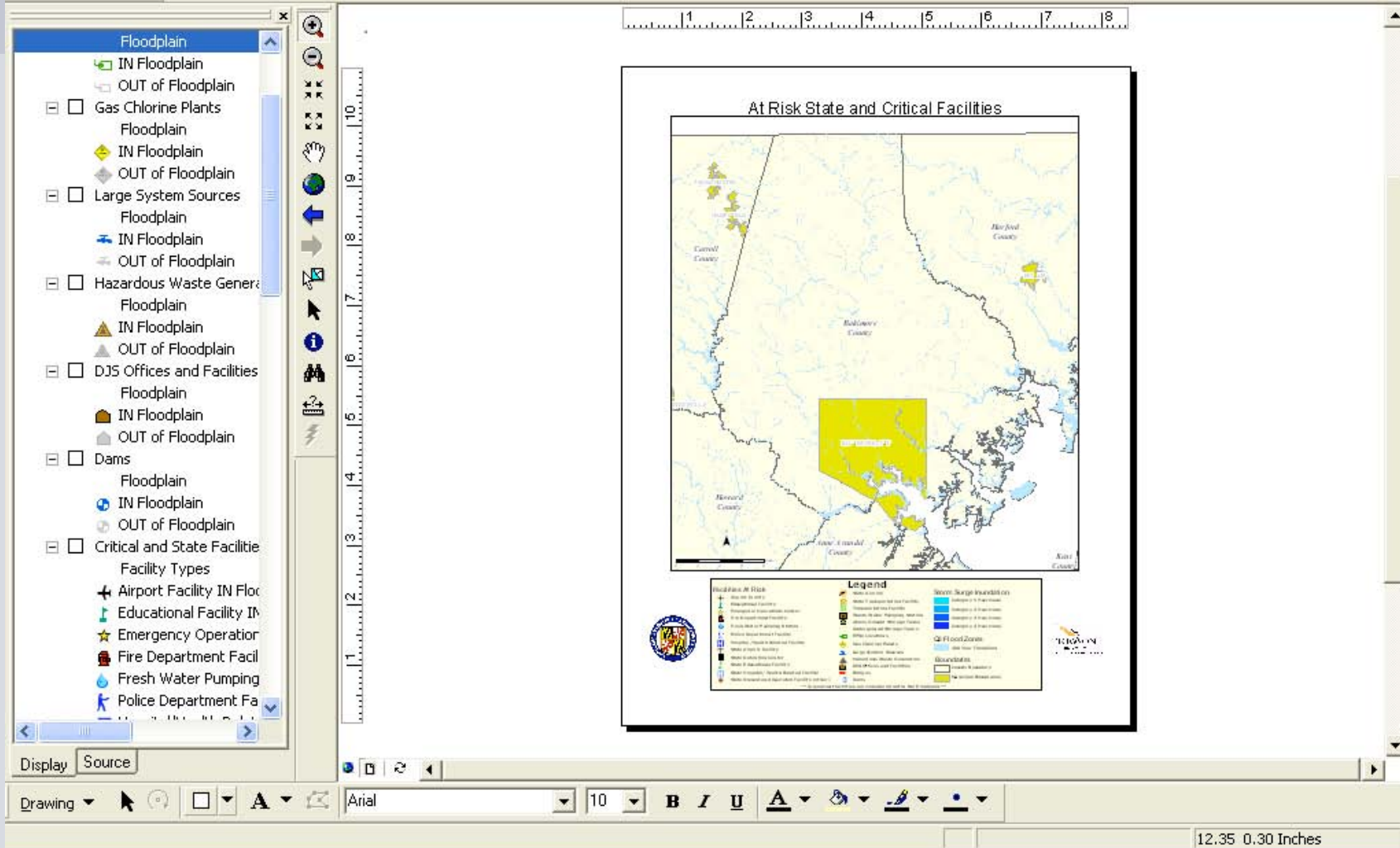
Creating ArcReader File in ArcGIS

- Data Presentation is Designed in ArcMap
 - Compilation of data
 - Symbolization
 - Labeling
 - Layout
 - Bookmarking





Layout View



Facilities - ArcMap - ArcInfo

File Edit View Insert Selection Tools Window Help

Data View
Layout View

Zoom Data
Zoom Layout

Bookmarks
Toolbars

Table Of Contents
Status Bar
Overflow Labels
Identify Results

Scrollbars
Rulers
Guides
Grid

Data Frame Properties...

Hazardous Waste Generators
Floodplain
IN Floodplain
OUT of Floodplain

DJS Offices and Facilities
Floodplain
IN Floodplain
OUT of Floodplain

Dams
Floodplain
IN Floodplain
OUT of Floodplain

Critical and State Facilities

1:2,127,200

Publisher

Bookmarks

- Create...
- Manage...
- Allegany County
- Anne Arundel County
- Baltimore County
- Baltimore City
- Calvert County
- Caroline County
- Carroll County
- Cecil County
- Charles County
- Dorchester County
- Frederick County
- Garrett County
- Harford County
- Howard County
- Montgomery County
- Prince George's County
- Queen Anne's County
- St. Mary's County
- Somerset County
- Talbot County

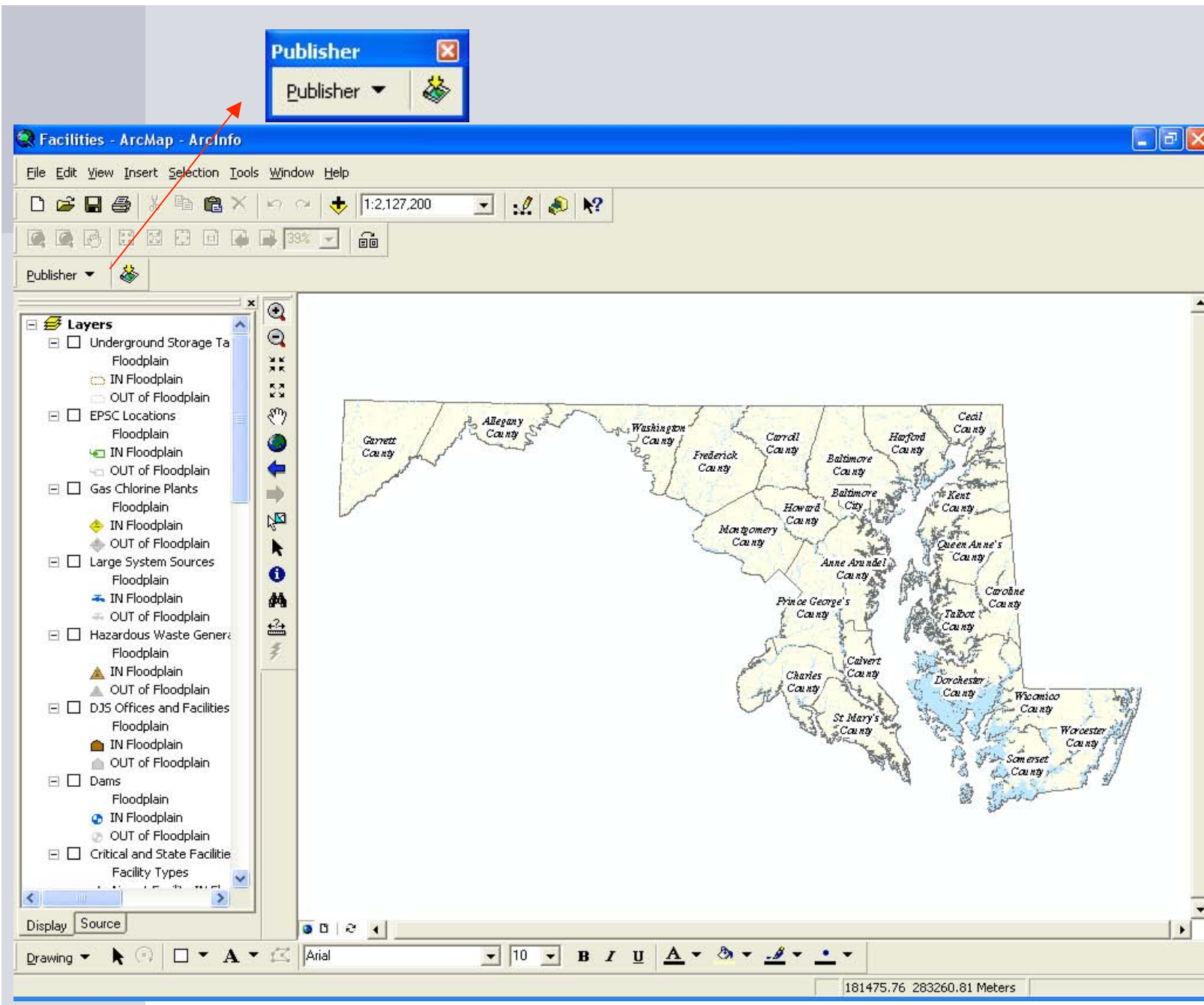
175284.70 272567.17 Meters

ArcGIS Publisher



- ArcGIS Publisher extension converts map documents (.mxd) to published map files (.pmf)
- ArcReader views these published files

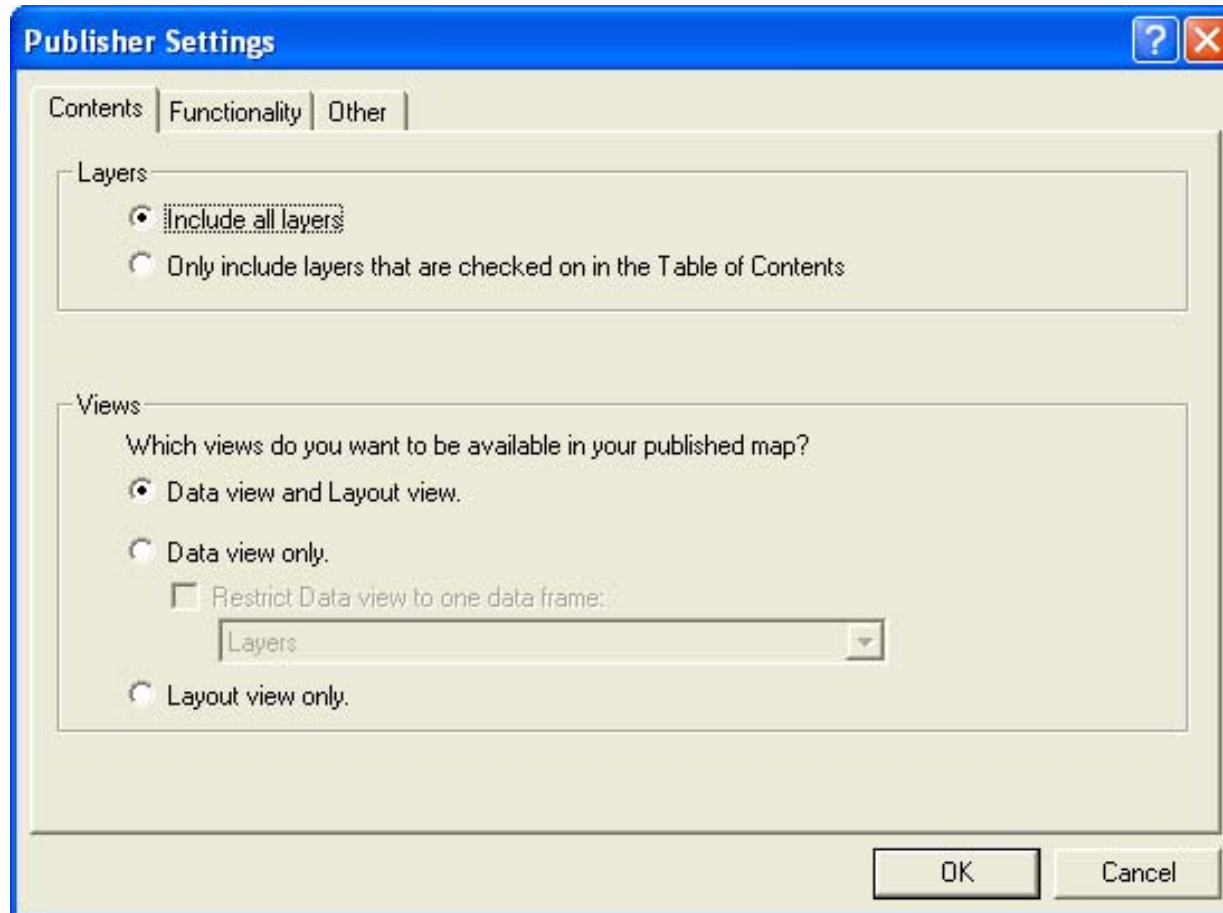




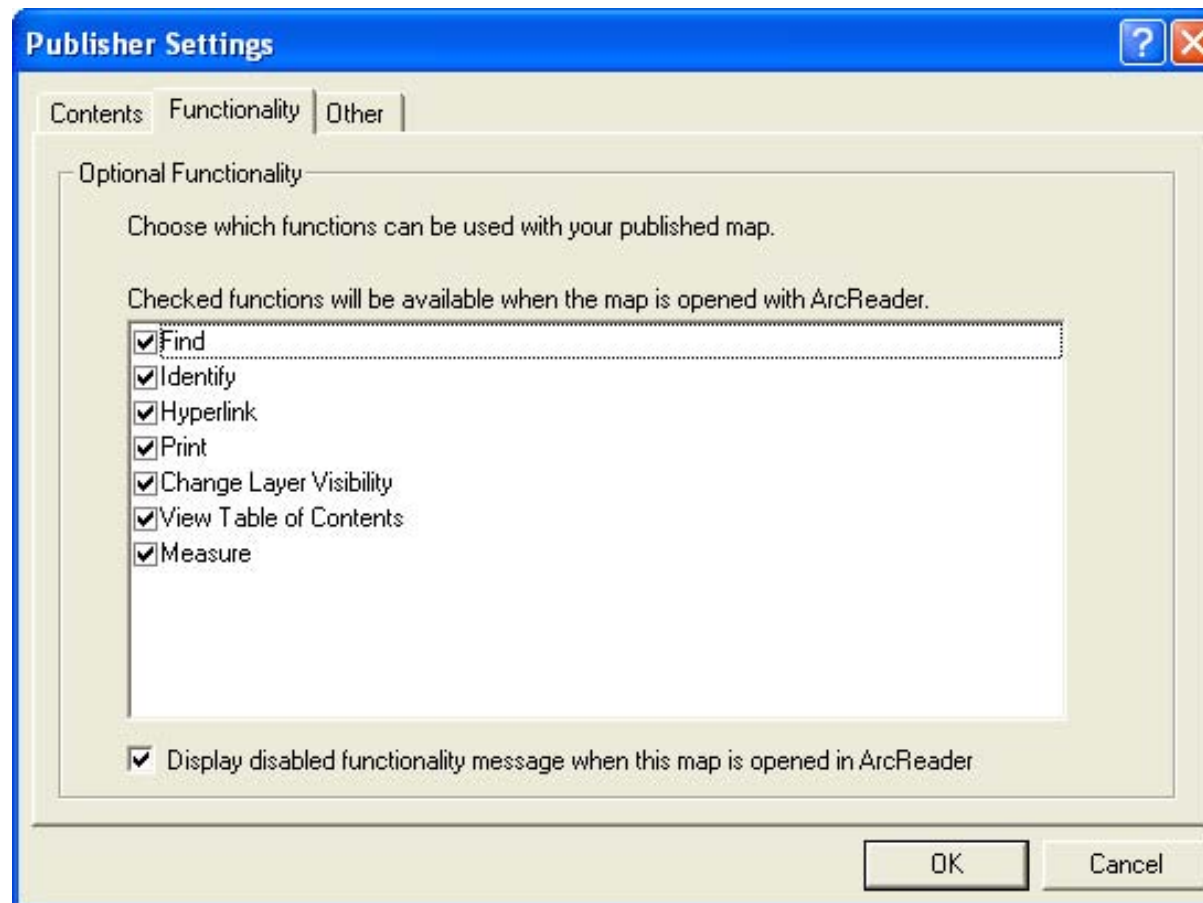
P
U
B
L
I
S
H
E
R



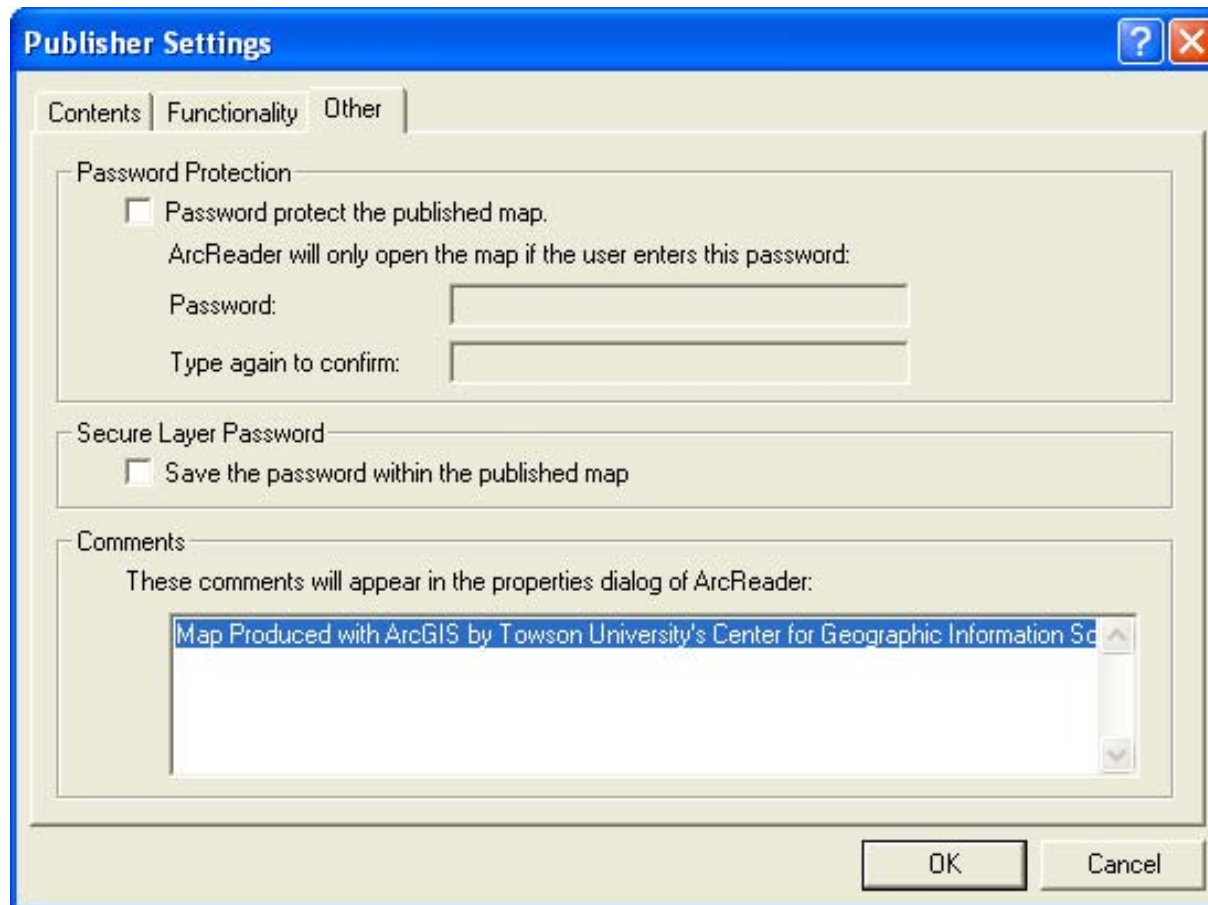
ArcGIS Publisher 8.3 Settings



ArcGIS Publisher 8.3 Settings



ArcGIS Publisher 8.3 Settings



The screenshot shows the 'Publisher Settings' dialog box with the 'Other' tab selected. The dialog has three tabs: 'Contents', 'Functionality', and 'Other'. The 'Other' tab contains three sections: 'Password Protection', 'Secure Layer Password', and 'Comments'. The 'Password Protection' section has a checkbox for 'Password protect the published map.' which is unchecked. Below it is a text box for 'ArcReader will only open the map if the user enters this password:' followed by two input fields labeled 'Password:' and 'Type again to confirm:'. The 'Secure Layer Password' section has a checkbox for 'Save the password within the published map' which is also unchecked. The 'Comments' section has a text box with the text 'Map Produced with ArcGIS by Towson University's Center for Geographic Information Science' and a scroll bar on the right. At the bottom right of the dialog are 'OK' and 'Cancel' buttons.

Publisher Settings [?] [X]

Contents | **Functionality** | Other

Password Protection

Password protect the published map.
ArcReader will only open the map if the user enters this password:

Password:

Type again to confirm:

Secure Layer Password

Save the password within the published map

Comments

These comments will appear in the properties dialog of ArcReader:

Map Produced with ArcGIS by Towson University's Center for Geographic Information Science

OK Cancel



ArcReader 8.3 Functionality

- View, explore, and print
- Read-only data



ArcReader Key Functions

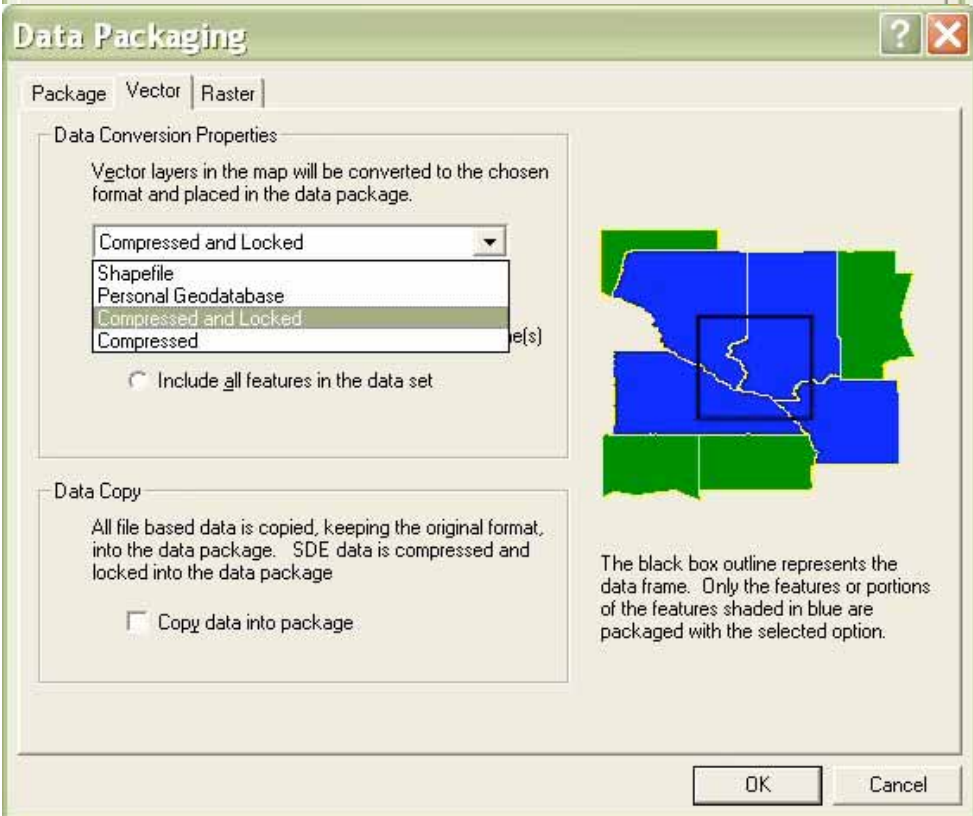
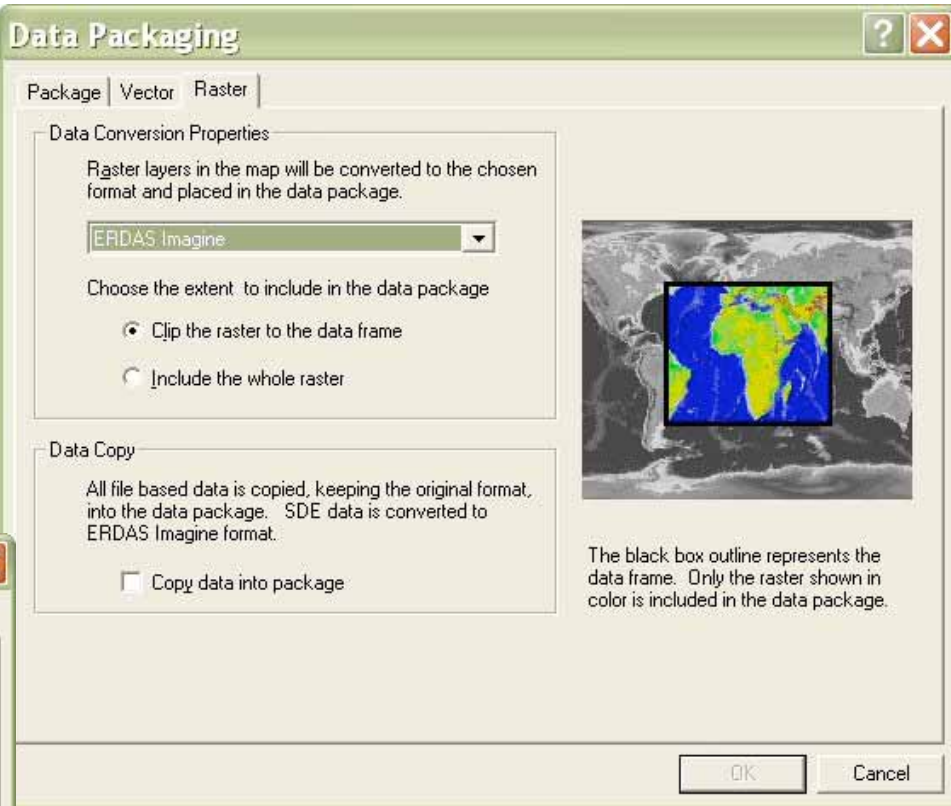
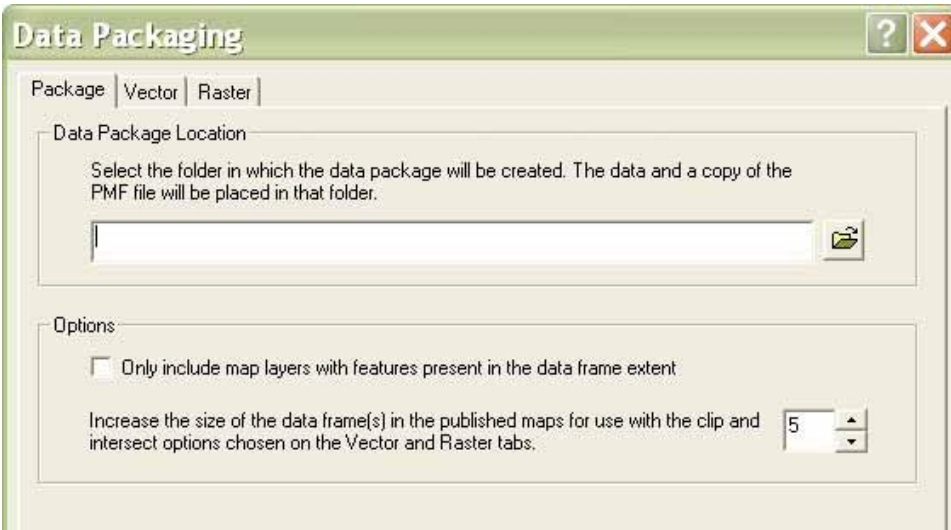
- Zoom in/out
- Pan
- Go to full extent
- Go to previous/next extent
- Identify Tool (multilayer)
- Data view and layout view
- View spatial bookmarks
- Find Tool
- View and print preauthored map layouts
- Open/Close published map files
- Shows recently opened maps
- Measure Tool
- Hyperlink Tool
- Magnifier Window



ArcGIS Publisher 9.0

- Data Packaging (bundling of data)
 - Clip vector and raster data
 - Export vector data/convert it to shapefile, personal geodatabase
 - Export raster data in its original format or convert it to an ERDAS IMAGINE file





Publisher 9.0 Data Packaging Options

ArcGIS Publisher 9.0

- ArcReader Developer Control (Customizing)
 - Simple query and search functionality
 - Direct read-only access to published map files
 - ActiveX and .NET Windows Control versions
 - Help and code samples
 - Royalty-free distribution



Additional Security Features

- Restricted Access to only ArcReader
- Expiration Date
- Passwords



The screenshot shows the 'Publisher Settings' dialog box with the 'Security' tab selected. The dialog has a title bar with a question mark and a close button. Below the title bar are tabs for 'Contents', 'Functionality', 'Security', 'Application', and 'Other'. The 'Security' tab is active and contains three sections: 'Password Protection', 'IMS Layer Password', and 'Data Packaging'. In the 'Password Protection' section, the checkbox 'To open the map users will be required to enter the following password' is unchecked. Below this are two text input fields labeled 'Password:' and 'Type again to confirm:'. In the 'IMS Layer Password' section, there is a descriptive paragraph and an unchecked checkbox 'Store the password, if present in the server connection properties, within the published map'. In the 'Data Packaging' section, there is a descriptive paragraph and a checked checkbox 'Allow data packaging'. At the bottom right of the dialog are 'OK' and 'Cancel' buttons.



ArcReader 9.0

- Improved Identify tool
- Take snapshots of current display (bitmap)
- Enhanced Find Dialog Box
- Improved Measure tool
- Supports topology layers, event layers, and geometric networks
- Support for many of the new ArcGIS 9 features
 - ArcGIS Server
 - Raster catalogs
 - ArcSDE 9
 - Advanced labeling
- Improvements to the performance of hyperlinks



Acknowledgements

THANK YOU

THANK YOU

Maryland Emergency Management Agency (MEMA)
&
Towson University Center for Geographic Information
Sciences:

David Sides, Project Manager GIS Database Development
Jeff Roberts, Project Manager GIS Applications Development
Jaime Alvarez, GIS Specialist
Missy Valentino, GIS Specialist





Questions?



Please Contact Towson University Center for Geographic Information Sciences for technical questions at:

Ashley Lesh, GIS Specialist
alesh@towson.edu

David Sides, Project Manager GIS Database Development
dsides@towson.edu

Please Contact the Maryland Emergency Management Agency (MEMA) for project-related questions at:

Carver Struve, Mitigation Planner
cstruve@mema.state.md.us

