



GIMS V2 - a Tailored Tool

*Jack Worthy, 45th SCS/COMM GIMS Manager
Richard Naus, GIS Manager, Titan Patrick AFB*



Agenda

- **45th Space Wing**
- **History of GIMS**
- **Architecture**
- **Changing data to the Communication Mission Data Set (CMDS)**
- **Tailored Toolbar**
- **Advantages**



Patrick Air Force Base



**Home of the 45 SW
Headquarters**



Cape Canaveral Air Force Station



- 20 miles north of Patrick AFB
- Point of origin for Eastern Range launches



45th Space Wing Manages Eastern Range

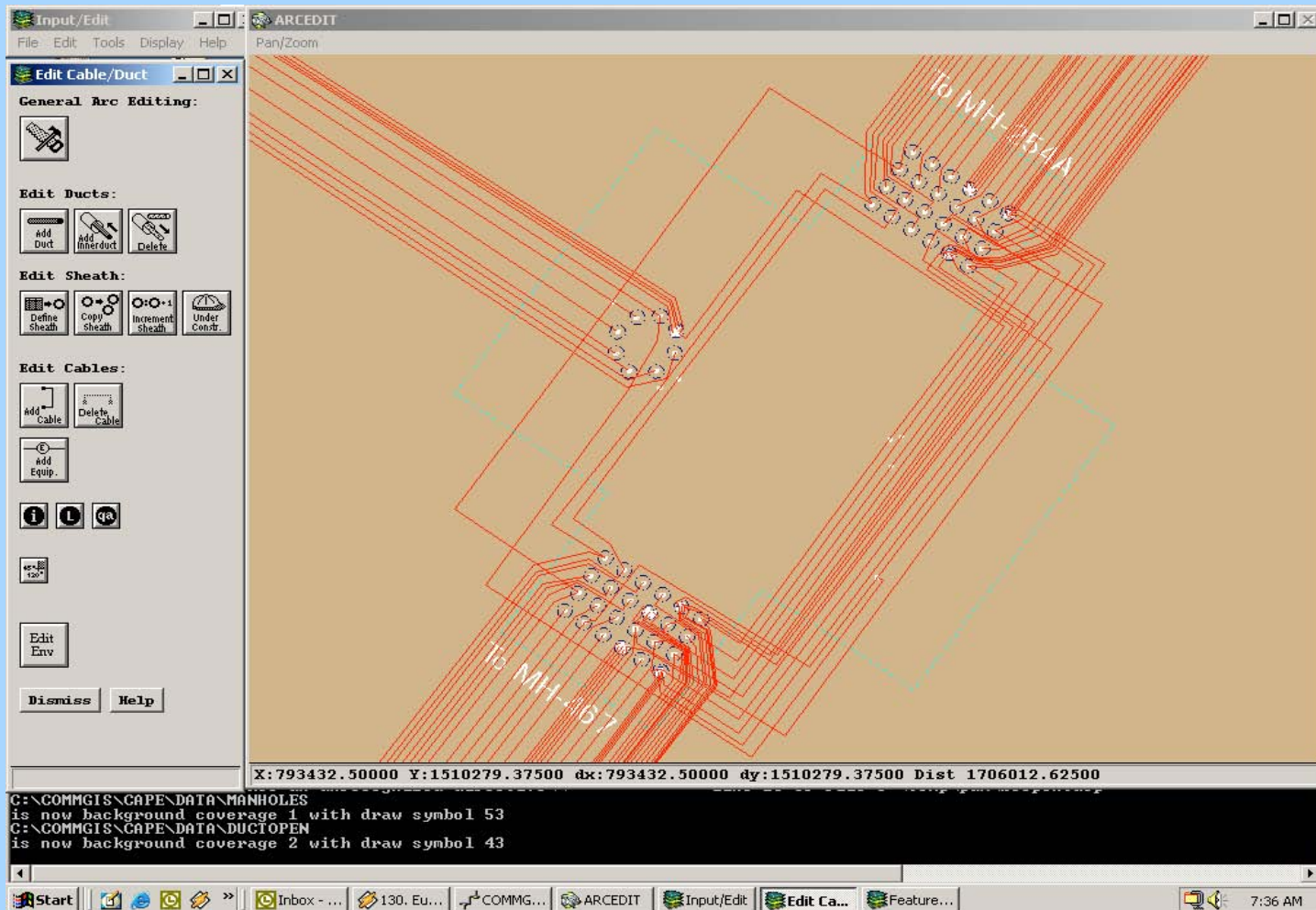




GIMS Editor

GIMS editor was created using Arc/INFO 7.0

Geographic
Information
Management
Systems
(GIMS)



GIMS V2 a tailored tool

ESRI July 25-29, 2005

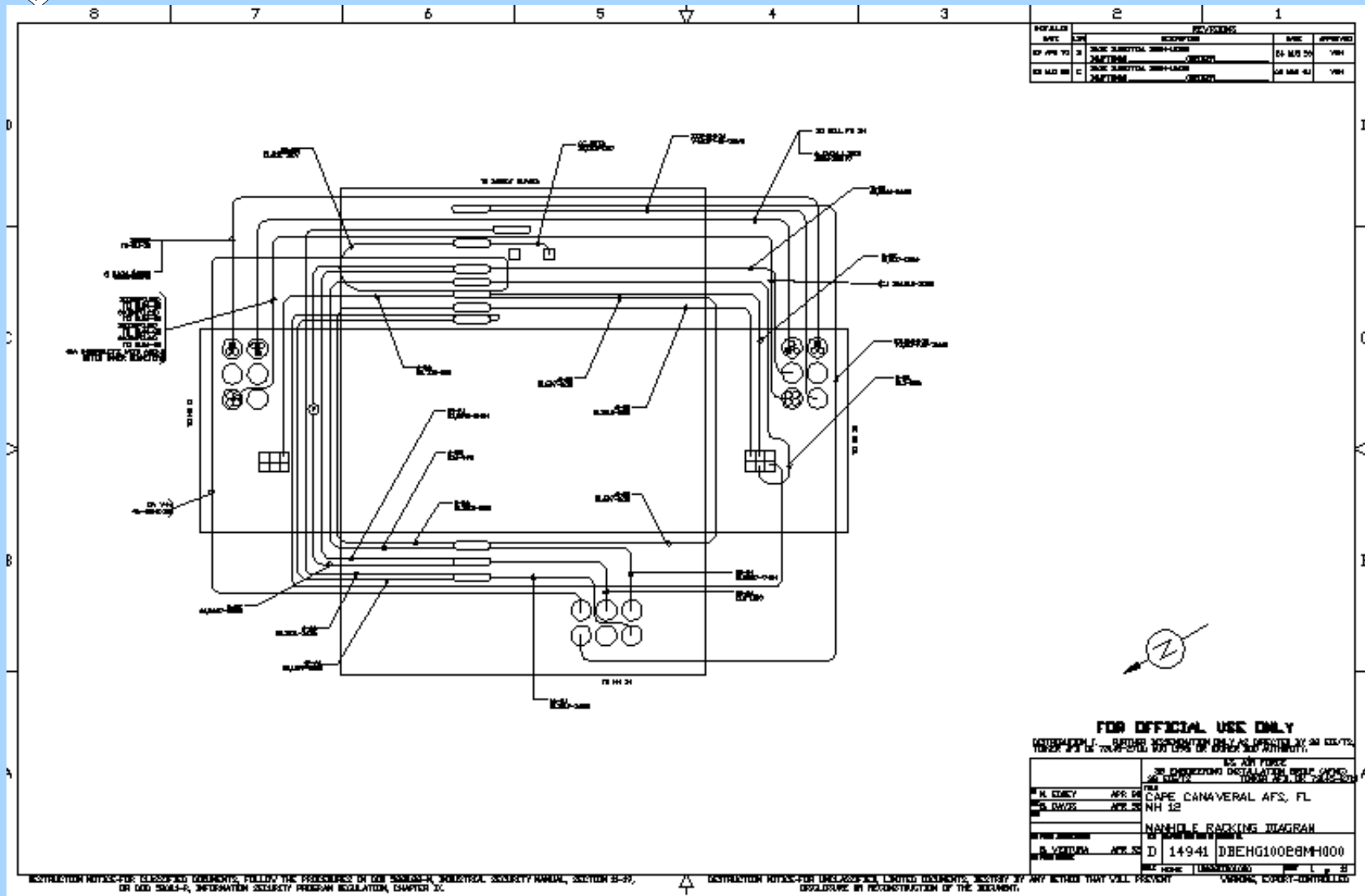


History of GIMS

- In 1996, GIMS V1 was created using Arc/INFO 7.0
- 2000 the Outside Cable Plant data collection from CSIR drawings and GeoReferenced using GPS data was completed



CSIR Drawing



RESTRICTION NOTICE: FOR CLASSIFIED DOCUMENTS, FULFILL THE REQUIREMENTS OF COMSEC/INFORMATION SECURITY MANUAL, SECTION 34-32,
OR COMSEC/INFORMATION SECURITY PROGRAM REGULATION, CHAPTER 3.

RESTRICTION NOTICE: FOR UNCLASSIFIED LIMITED DOCUMENTS, RESTRICT BY ANY METHOD THAT WILL PREVENT
DISCLOSURE BY RECONSTRUCTION OF THE DOCUMENT.

UNCLASSIFIED
CONTROLLED



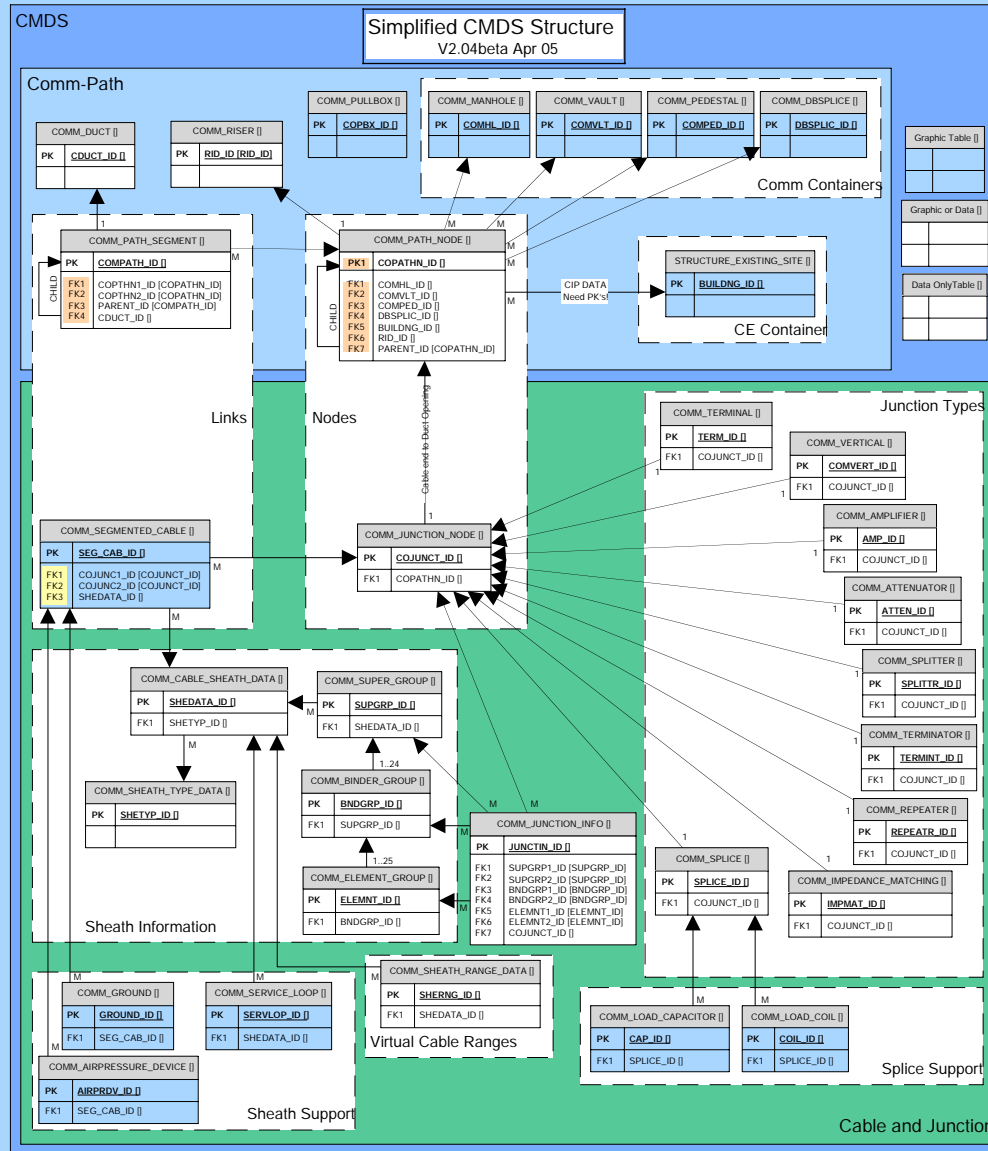
Communications Mission Data Set



- The 38th Engineering Installation Group (EIG) are the keepers of communications for the USAF
- The 38th EIG has developed the CMDS standards to be used though out the Air Force



CMDS data flow diagram



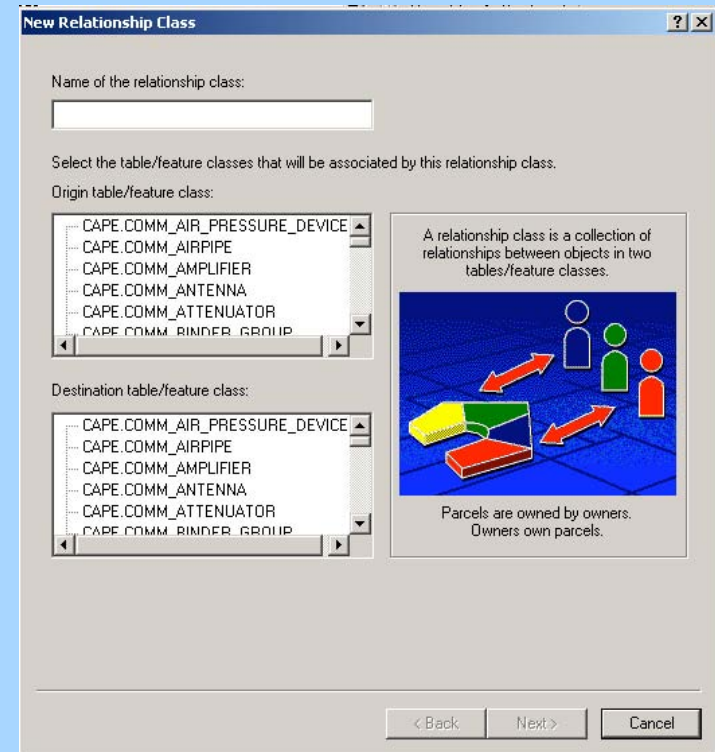
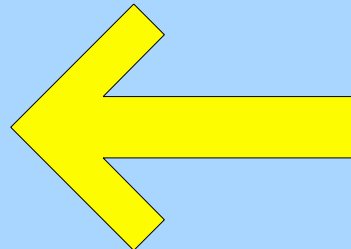
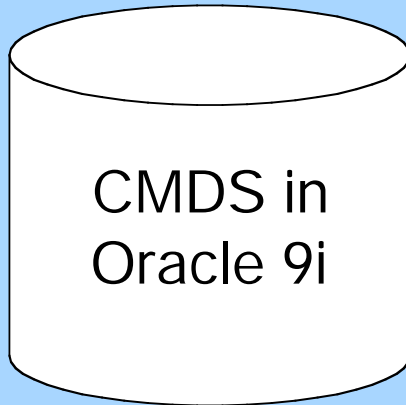


CMD5

**CMD5 in a
Multi-user
GeoDatabase**

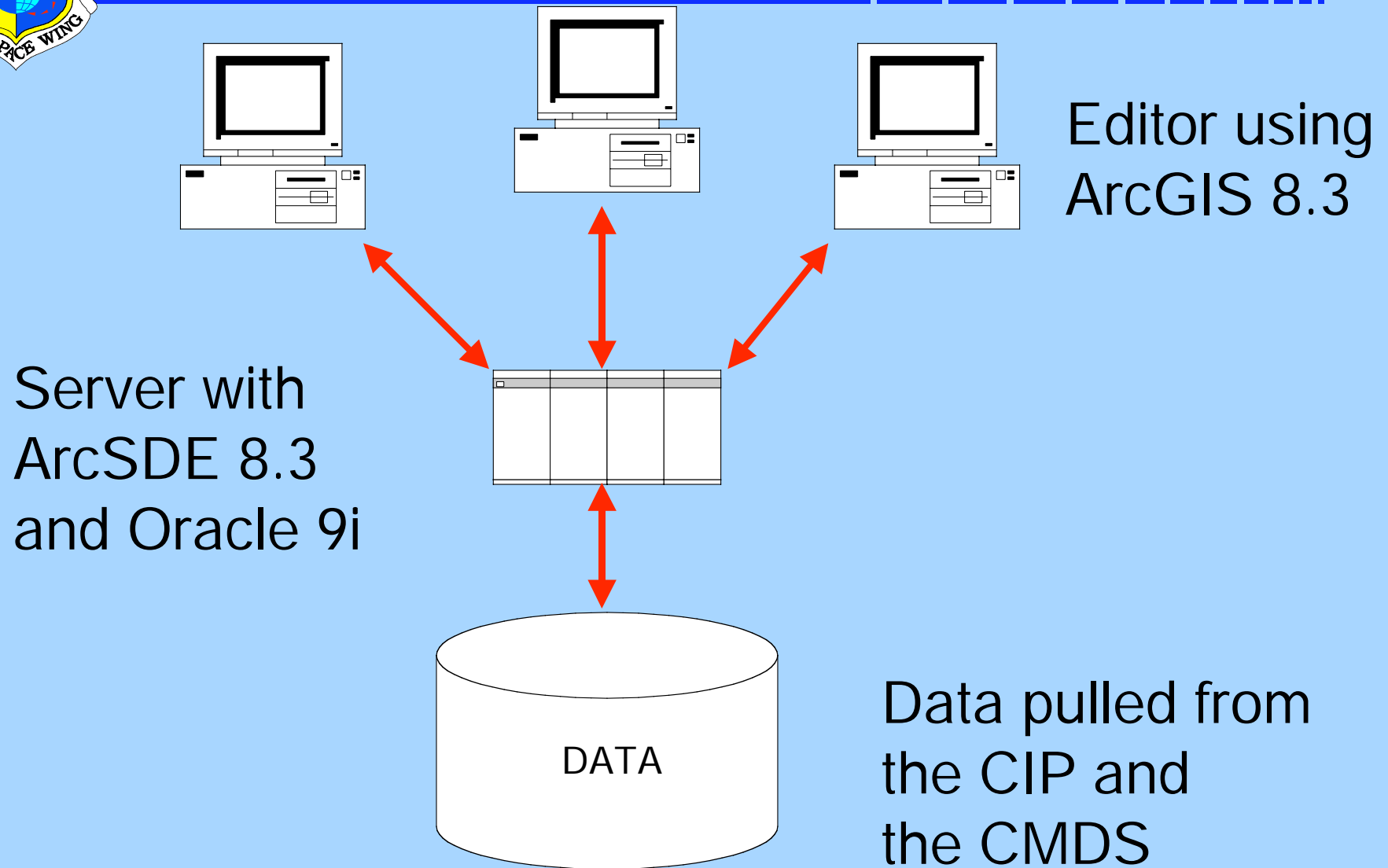


Database



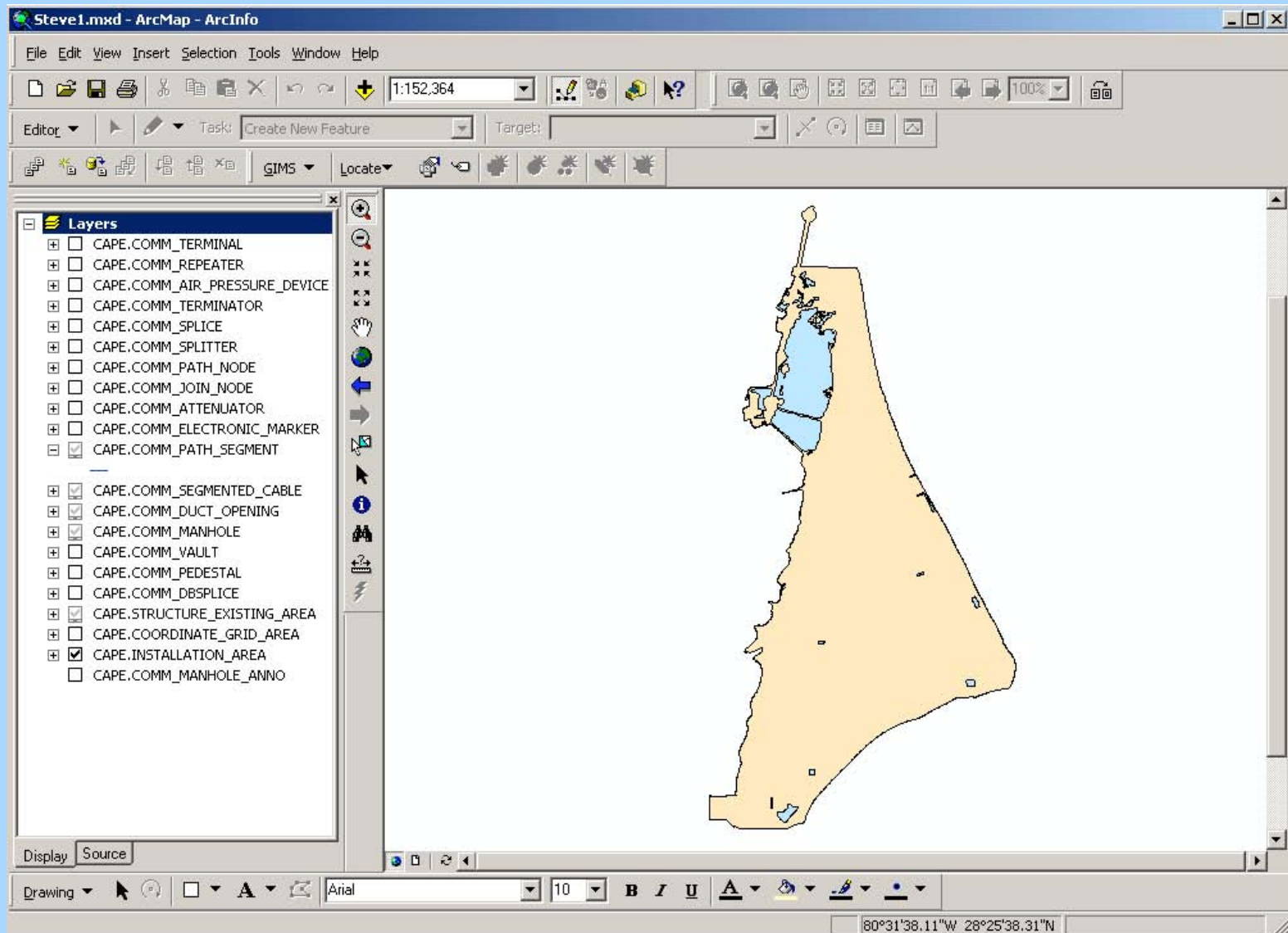


Architecture



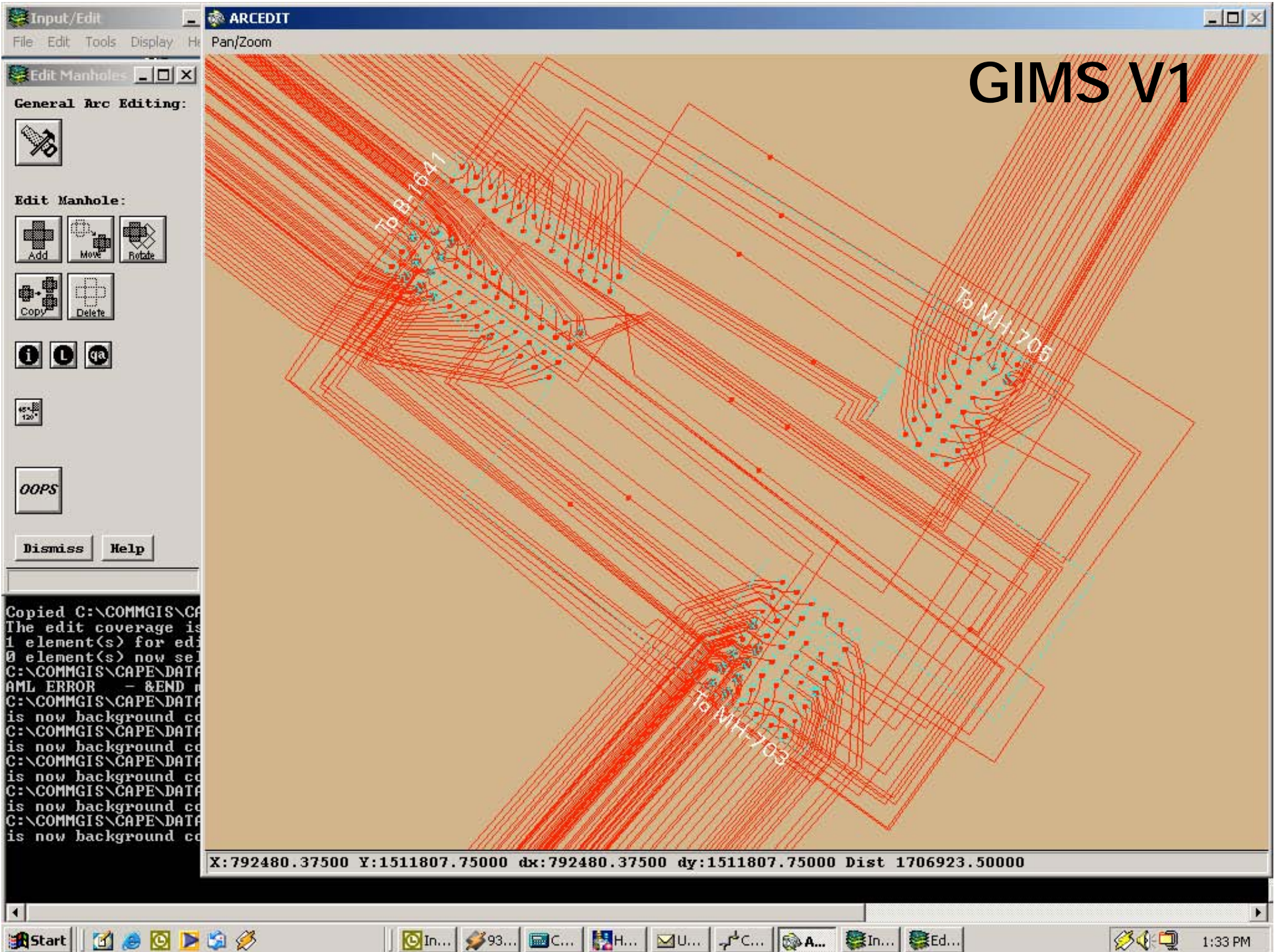


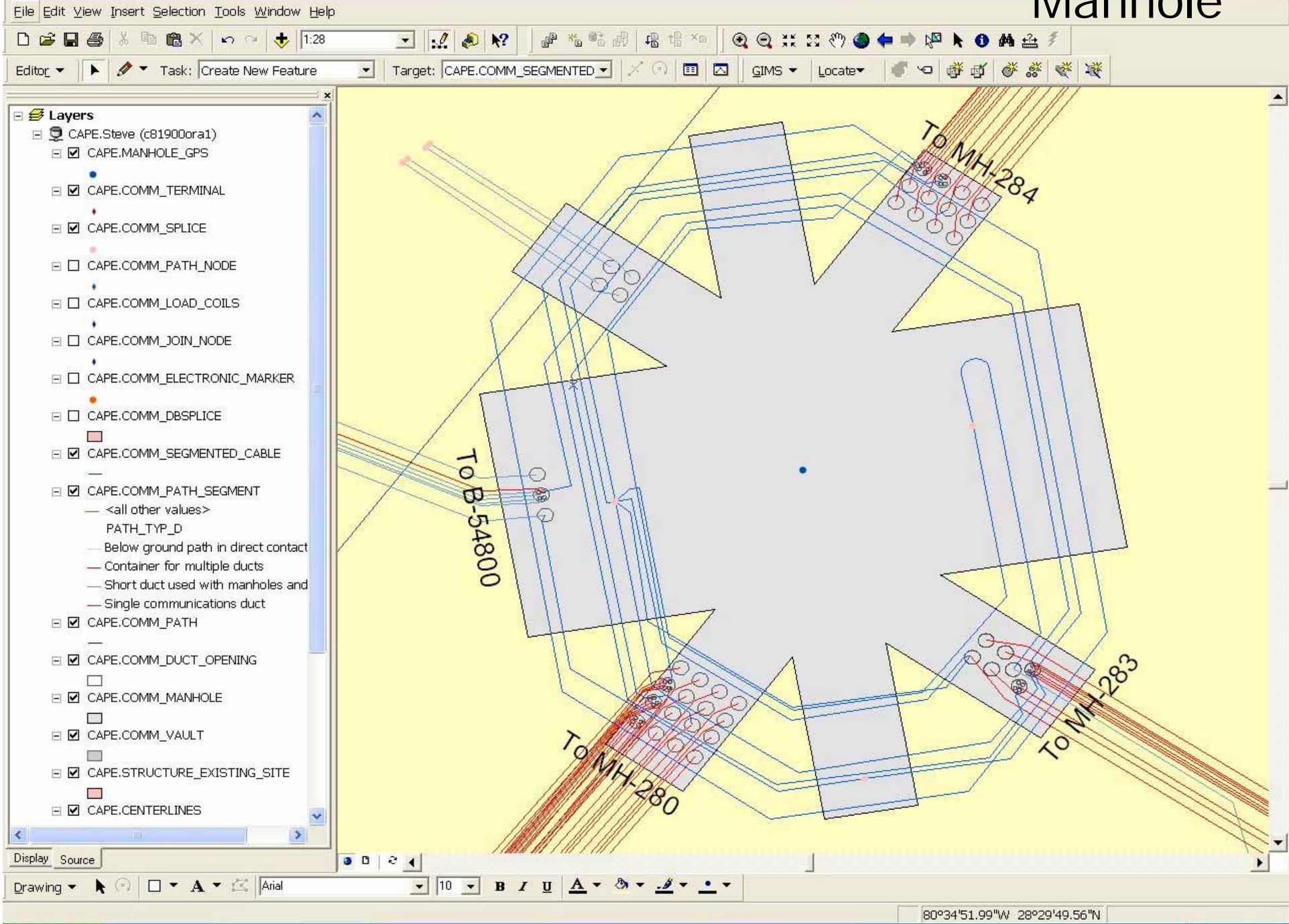
GIMS V2



GIMS V2 a tailored tool

ESRI July 25-29, 2005







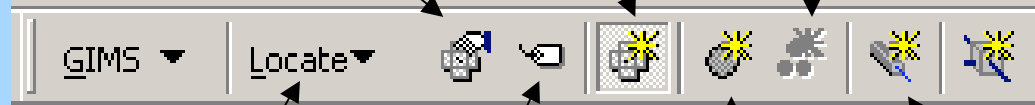
GIMS V2 Toolbar

Go to next Manhole

New Manhole

New Inner Duct

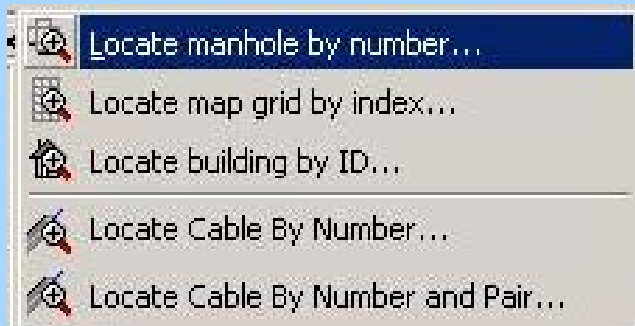
New Equipment



Tag Item

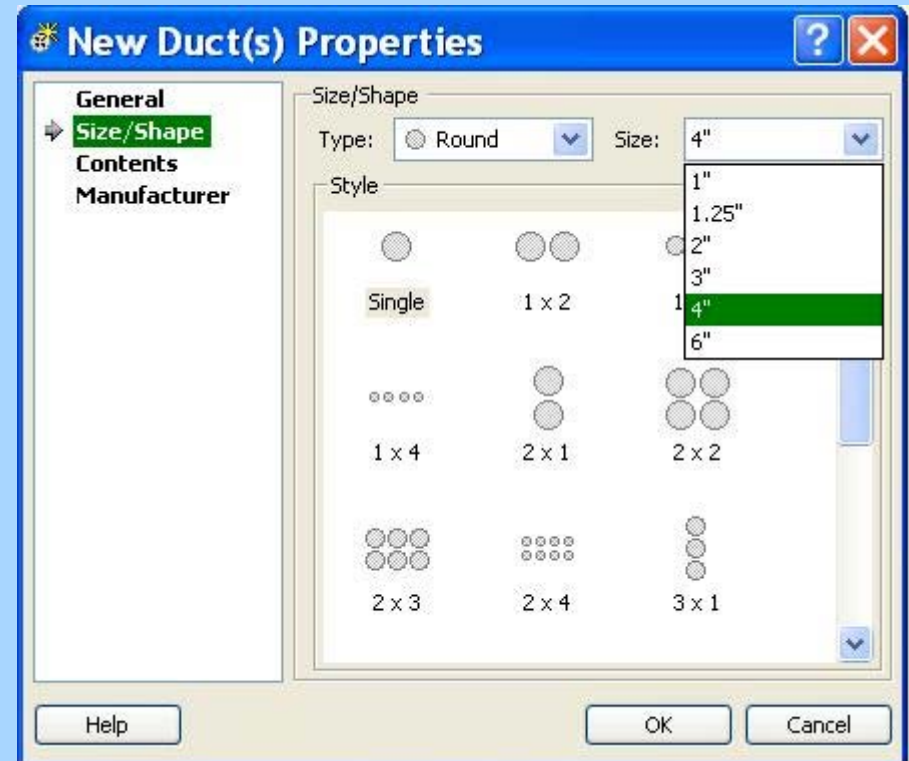
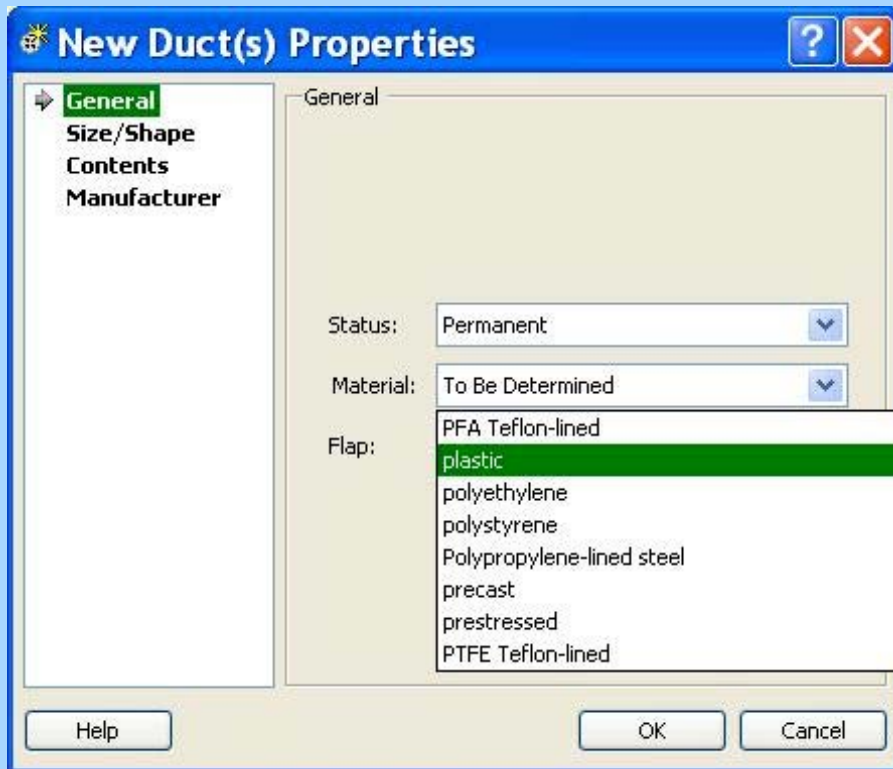
New Duct

New Cable





New Ducts





Cable Information

Create Sheath

General

Composite
Miscellaneous

Medium: fiber optical

Cable Material: Fiber Optics Cable

Core: Filled Core

Fill: Gel Filled

Insulation: Plastic

Buffer: Loose Fill

Capacity: 12

Gauge: 8.3

Sheath Material

Outer:

Inner:

10
13
16
18
19
22
26

Help

Create Cable Range

Number: CF-4B

Pair Count

Start: 25

End: 36

Help

OK

Cancel

Cable Attributes

Sheath Definition

ID: 12L8.3F

New...

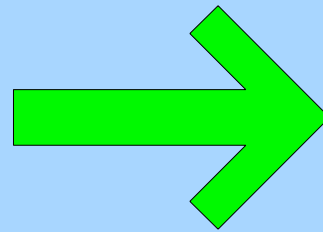
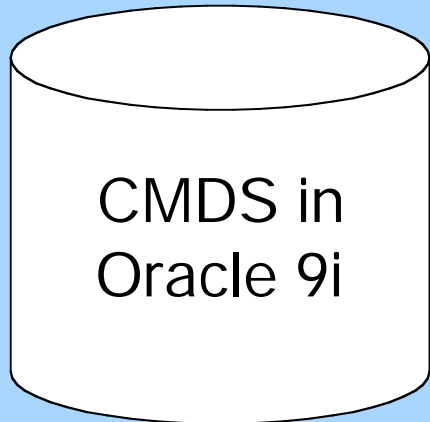
Cable Ranges

Number	Start Pair	End Pair
CF-4B	25	36

OK



Menu Choices



New Manhole Attributes

General
Size/Shape
Manufacturer
Contents

General

Name: MH-2004

Type: R2A manhole

Material: to be determined

Function: to be determined
Composolite
Concrete Cast inSitu/Cast in Place
Pre-Cast Concrete

Status:

Frame/Cover: Loose Boulders
Hard Surfaced

Data Source: Unsurfaced
Glass Reinforced Plastic
Painted
MASONRY

Help OK Cancel

Advantages



- Uses the CMDS
- Standardized inputs
- Leverage the Geodatabase
 - Multi user functionality
 - Use of Oracle 9i
- More user friendly



- Multiple editors using versioning
- Reduction in production time
 - Old GIMS average 45 minutes per MH
 - GIMS V2 average 10 minutes per MH



Improved Collection

- **Production and QC rates improved**
- **Five Techs worked on a project the final QC rate was 99.2%**
- **Complete a project in half the time and collecting more data**



Questions?