

# Kane County GIS-Technologies Management Solutions

## Application Development using the ArcReaderControl



Thomas S. Nicoski  
GIS-Technologies  
nicoskithomas@co.kane.il.us

1

ESRI 2005

Kane County Illinois

Application Development using the ArcReader Control

## ESRI Objects

### **Requires an Additional License**

- ArcObjects
- ArcGIS/ArcView @ \$1,500 per client
- ArcEngine @ \$5,000 + \$500 per client
  
- MapObjects @ \$5,000 + \$2,500 per 25 clients

### **Does Not Require an Additional License**

- MapObjectsLT @ \$1,000 (cannot access ArcSDE)
- ArcReaderControl \$FREE (can access ArcSDE)  
(The building of a PMF file requires the Publisher Extension @ \$2,000)

Prices obtained from the ESRI store website <http://store.esri.com/esri>

Thomas S. Nicoski

GIS-Technologies

2

Application Development using the ArcReader Control

## ArcReaderControl Samples

### ArcGIS Developer Online

<http://arcgisdeveloperonline.esri.com/ArcGISDeveloper/default.asp>

### ArcGIS Publisher Extension

c:\Program Files\ArcGIS\DeveloperKit\samples\Publisher\ArcReaderControl

### GeneralFramework Samples

- DocumentProperties
- DragRectangle
- LoadDocument
- Scrollbars
- Statusbar

### OutPut Samples

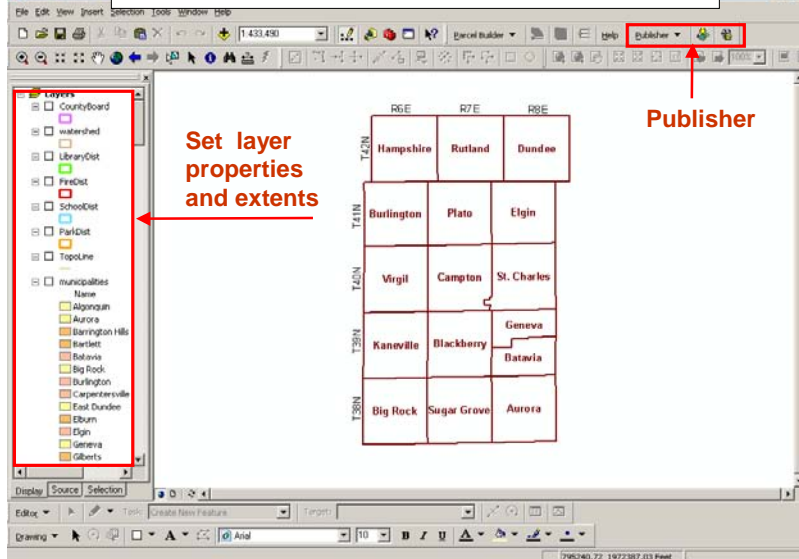
- AttributeQuery
- CopytoClipboard
- Find
- Hyperlinks
- Printing
- Query

### Navigation Samples

- FixedPanZoom
- MagnifierWindow
- MapTools
- PageLayoutTools
- SpatialBookmarks

Application Development using the ArcReader Control

## Build ArcGISv9 Project



ESRI 2005 Kane County Illinois

Application Development using the ArcReader Control

## Publish Map Settings

**Include all layers.**

**Uncheck so it will work in Visual Basic.**

Adjust Publisher Settings before Publishing Map

Thomas S. Nicoski GIS-Technologies 5

ESRI 2005 Kane County Illinois

Application Development using the ArcReader Control

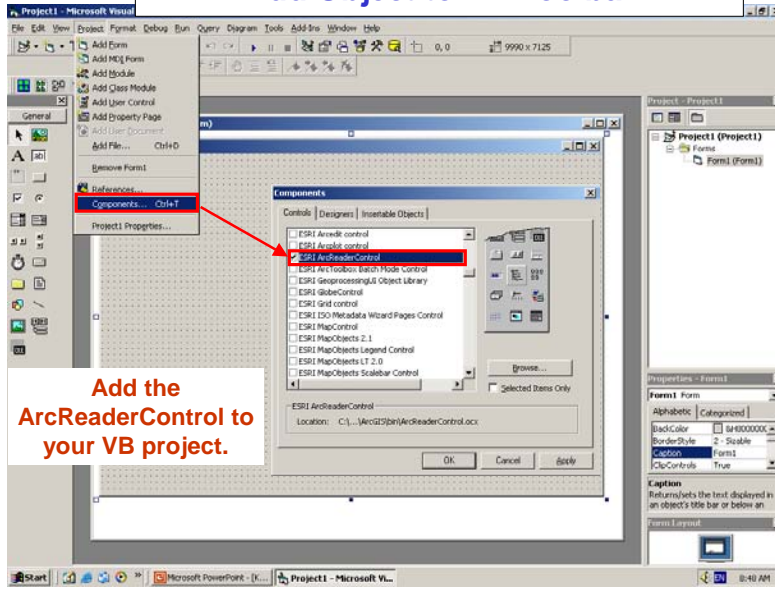
## Publish Map

**Publish Map creates the PMF file that is used by the ArcReader.**

Publish Map using the ArcGIS Publisher Extension

Thomas S. Nicoski GIS-Technologies 6

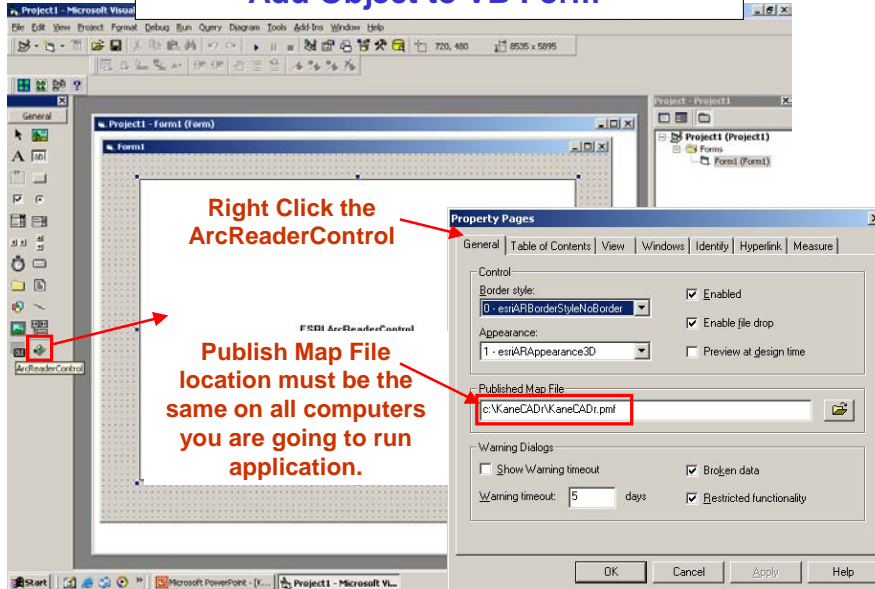
### Application Development using the ArcReader Control Add Object to VB Toolbar



Thomas S. Nicoski

GIS-Technologies

### Application Development using the ArcReader Control Add Object to VB Form



Thomas S. Nicoski

GIS-Technologies

### Application Development using the ArcReader Control Table of Contents

**TOC ON** →

Leave the TOC Checked to Display the Map Table of Contents.

Thomas S. Nicoski GIS-Technologies 9

### Application Development using the ArcReader Control Table of Contents OFF

**TOC OFF** →

**Scrollbars ON** →

Uncheck the TOC under the Table of Contents to turn the Table of Contents OFF.

Thomas S. Nicoski GIS-Technologies 10

### Application Development using the ArcReader Control

## Scrollbars OFF

**Uncheck the Show scrollbars under View to turn the Scrollbars OFF.**

Thomas S. Nicoski

GIS-Technologies 11

### Application Development using the ArcReader Control

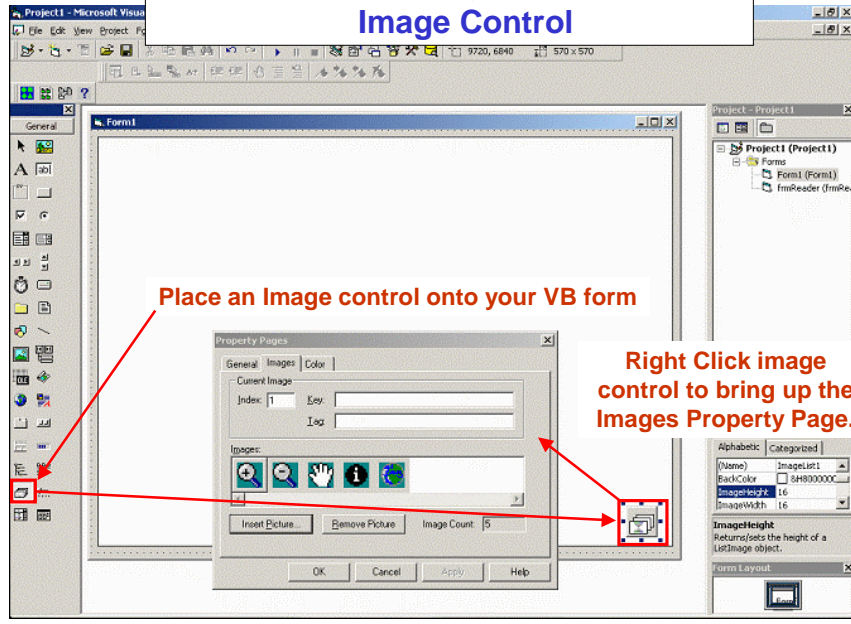
## MapTips

**Check the Show map tips in order to see them when using ArcReader**

Thomas S. Nicoski

12

### Application Development using the ArcReader Control Image Control



Thomas S. Nicoski

GIS-Technologies

### Application Development using the ArcReader Control Toolbar Code

```

'-----
' Toolbar1 Procedures
'-----
Private Sub Toolbar1_ButtonClick(ByVal Button As MSComctlLib.Button)
    If Button.Key = "FullExtent" Then
        Call cmdFullExtent_Click
    ElseIf Button.Key = "ZoomIn" Then
        ArcReaderControl1.CurrentARTool = esriARToolMapZoomIn
        sMode = "ZoomIn"
    ElseIf Button.Key = "ZoomOut" Then
        ArcReaderControl1.CurrentARTool = esriARToolMapZoomOut
        sMode = "ZoomOut"
    ElseIf Button.Key = "Pan" Then
        ArcReaderControl1.CurrentARTool = esriARToolMapPan
        sMode = "Pan"
    ElseIf Button.Key = "Identify" Then
        ArcReaderControl1.CurrentARTool = esriARToolNoneSelected
        sMode = "Identify"
    End If
    'Remember the current tool
    pARTool = ArcReaderControl1.CurrentARTool
End Sub

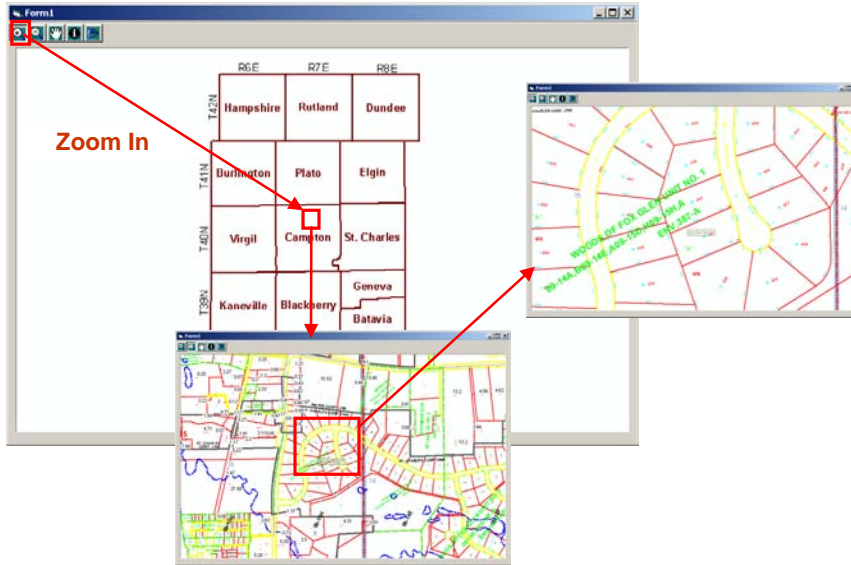
'-----
' cmdFullExtent Procedure
'-----
Private Sub cmdFullExtent_Click()
    'Set extent to full data extent
    Dim xMin As Double, yMin As Double, xMax As Double, yMax As Double
    ArcReaderControl1.ARPAGELayout.FocusARMap.GetFullExtent xMin, yMin, xMax, yMax
    ArcReaderControl1.ARPAGELayout.FocusARMap.SetExtent xMin, yMin, xMax, yMax
    'Refresh the display
    ArcReaderControl1.ARPAGELayout.FocusARMap.Refresh
End Sub

```

Thomas S. Nicoski

GIS-Technologies

### Application Development using the ArcReader Control **Test Zoom In Tool**



### Application Development using the ArcReader Control **Add Button Control**

**Add button to your form that will be used to simulate adding a layer**

**Add code that will add layer**

```

Option Explicit
Dim pMap As IARMap
Dim pLayer As IARLayer
Dim iFoxRiver As Integer

' Form_Load Procedure
Private Sub Form_Load()
    Dim i As Integer
    Dim j As Integer

    'Set FoxRiver button color to grey
    cmdFoxRiver.BackColor = &B800000F 'Grey

    'Loop through each map in the document
    For i = 0 To ArcReaderControl1.ARPagelayout.ARMapCount - 1
        'Get the IARMap interface
        Set pMap = ArcReaderControl1.ARPagelayout.ARMap(i)

        'Loop through each layer in the map
        For j = 0 To pMap.ARLayerCount - 1
            'Get the IARLayer interface
            Set pLayer = pMap.ARLayer(j)
            If pMap.ARLayer(j).Name = "FoxRiver" Then iFoxRiver = j
        Next j
    Next i
End Sub

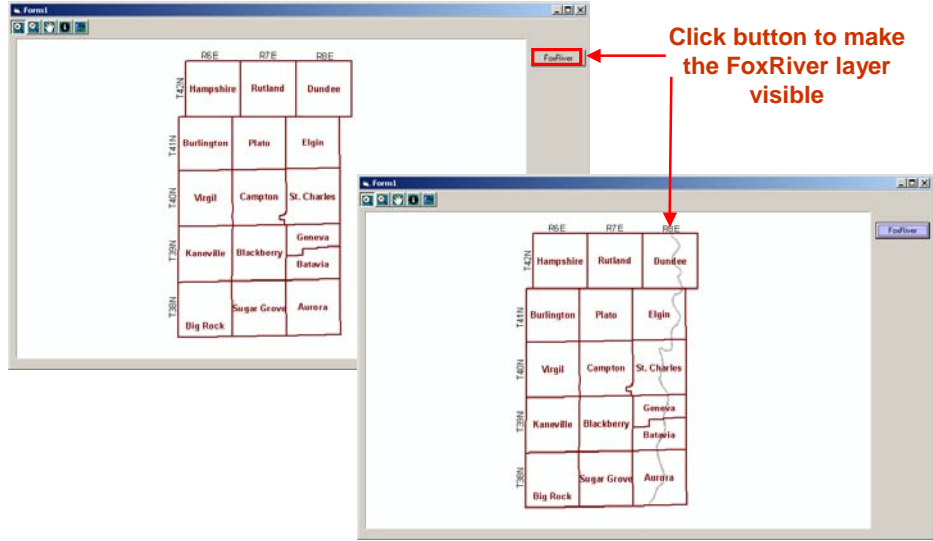
' cmdFoxRiver Procedure
Private Sub cmdFoxRiver_Click()
    If pMap.ARLayer(iFoxRiver).Visible = True Then
        pMap.ARLayer(iFoxRiver).Visible = False
        cmdFoxRiver.BackColor = &B800000F 'Grey
    Else
        pMap.ARLayer(iFoxRiver).Visible = True
        cmdFoxRiver.BackColor = &FF0000 'Blue
    End If
    pMap.Refresh
End Sub

```

**Add code that will turn layer on and off**



Application Development using the ArcReader Control  
**Test FoxRiver Button Control**



Thomas S. Nicoski

GIS-Technologies

Application Development using the ArcReader Control  
**Identify Parcel – Form Load**

```
Option Explicit
Dim pARTool As esriARTool
Dim pMap As IARMap
Dim pLayer As IARLayer
Dim iFoxRiver As Integer
Dim iParcelPoly As Integer
Dim sMode As String
Dim sPin As String

Private m_pFeature As IFeature
Private m_pFeatureSet As IFeatureSet
Private m_pSearchDef As ArcReaderSearchDef
Private m_pFeatureCursor As IFeatureCursor
Private m_pLayerCollection As New Collection
Private m_pUnitConverter As ARUnitConverter
Private m_iRecord As Long

'-----
' Form_Load Procedure
'-----

Private Sub Form_Load()
    Dim i As Integer
    Dim j As Integer

    'Set FoxRiver button color to grey
    cmdFoxRiver.BackColor = &H8000000F 'Grey

    'Loop through each map in the document
    For i = 0 To ArcReaderControl1.ARPageLayout.ARMMapCount - 1
        'Get the IARMap interface
        Set pMap = ArcReaderControl1.ARPageLayout.ARMMap(i)

        'Loop through each layer in the map
        For j = 0 To pMap.ARLayerCount - 1
            'Get the IARLayer interface
            Set pLayer = pMap.ARLayer(j)
            If pMap.ARLayer(j).Name = "FoxRiver" Then iFoxRiver = j
            If pMap.ARLayer(j).Name = "Kane.SDE.parcels_poly" Then iParcelPoly = j
        Next j
    Next i
End Sub
```

Add code that will define variables and objects

Add code that will add layer

Thomas S. Nicoski

GIS-Technologies

### Application Development using the ArcReader Control Identify Parcel – Mouse Down

```

' MouseDown Procedure
Private Sub ArcReaderControl1_OnMouseDown(ByVal Button As Long, ByVal Shift As Long, ByVal X As Long, ByVal Y As Long)
Dim i As Integer
Dim dxCoord As Double, dyCoord As Double
Dim sxCoord As String, syCoord As String, sUnits As String

'Only allow the left mouse button to work on the map
If Button <> 1 Then Exit Sub
Screen.MousePointer = 1
On Error GoTo ErrorHandler

If sMode = "Identify" Then
Set pLayer = pMap.ActiveLayer(iParcelPoly)
pMap.ToMapPoint X, Y, dxCoord, dyCoord
Dim pSearchDef As ArcReaderSearchDef
Set pSearchDef = New ArcReaderSearchDef
pSearchDef.SpatialRelationship = esriSpatialRelationshipIntersects

Dim dXmin As Double, dYmin As Double, dXmax As Double, dYmax As Double
ArcReaderControl1.ASPageLayout.FocusMap.GetExtent dXmin, dYmin, dXmax, dYmax

dXmin = dxCoord
dYmin = dyCoord
dXmax = dxCoord
dYmax = dyCoord

pSearchDef.SetEnvelopeShape dXmin, dYmin, dXmax, dYmax
Set m_pFeatureSet = ArcReaderControl1.ASPageLayout.FocusMap.QueryARFeatures(pSearchDef)
Set m_pFeatureCursor = pLayer.SearchARFeatures(pSearchDef)
m_pFeatureSet.Reset
Set m_pFeature = m_pFeatureCursor.NextARFeature
m_iRecord = 0

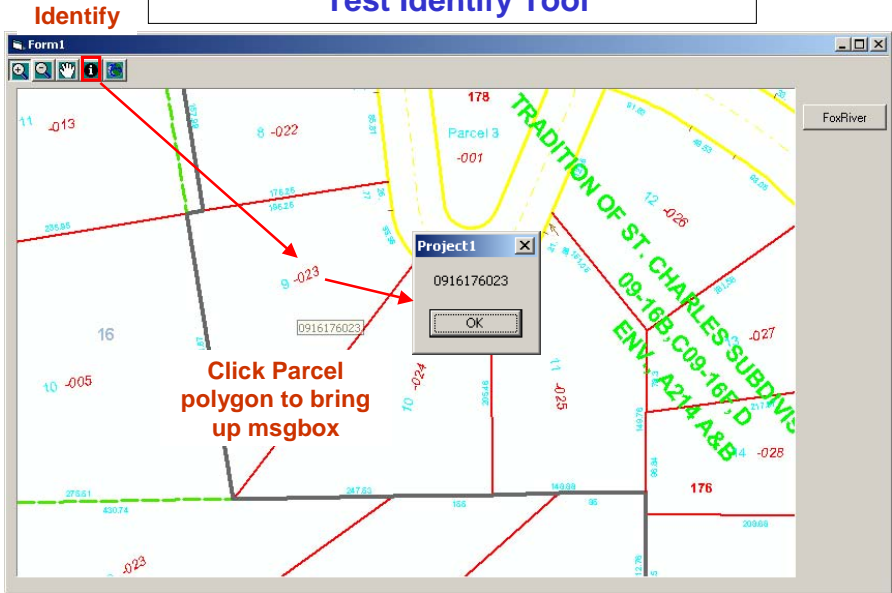
If (Not IsNull(m_pFeature.Value(CLng(1)))) Then
sPin = CStr(m_pFeature.Value(CLng(1)))
MsgBox sPin
m_pFeature.Flicker
CXSearch.Text = sPin
'Call to an outside database can take place hear
Else
sPin = "<NULL>"
MsgBox sPin
End If
End If

Screen.MousePointer = 0
Exit Sub
ErrorHandler:
Screen.MousePointer = 0
End Sub

```

**Add code that will control the mouse down event of ArcReaderControl**

### Application Development using the ArcReader Control Test Identify Tool



Application Development using the ArcReader Control  
**KaneCADr Database Integration**



The Parcel number is sent to an ASP page which does a database lookup and then displays the parcel record.

