



Channel Stewardship: The Ultimate Portal Collaborative Effort

Gary Hennington
Craig P. Orgeron, Ph.D.
ESRI International User Conference

August 5, 2008



The Legislation

- HB 861 – 2003 Legislative Session
- Effective coordination of policies, standards and procedures relating to procurement of GIS resources
- Development, operation and maintenance of a delivery system infrastructure for GIS data; shall provide a warehouse for Mississippi's GIS data





Mississippi Digital Earth Model (MDEM)

Geodetic Control

Digital Orthophotography

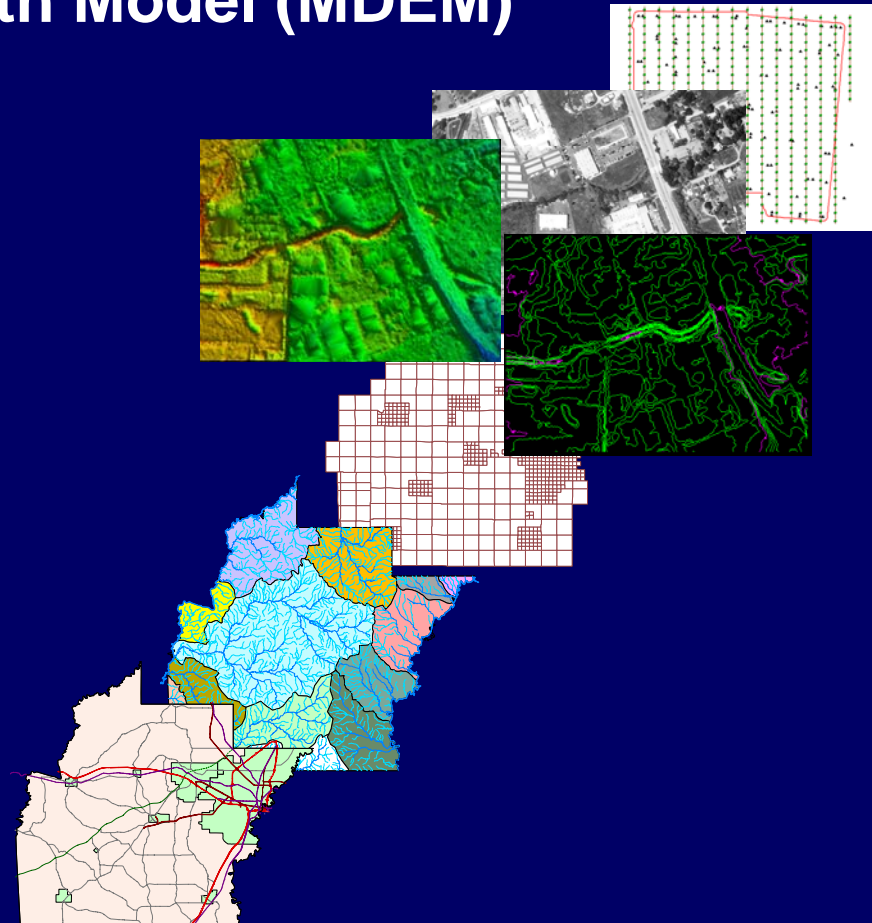
Elevation Models & Contours

Cadastre (Property Ownership)

Hydrography

Transportation

Political Boundary





MS Geospatial Clearinghouse

www.gis.ms.gov

Anonymous Users :

- Search unsecured data
- Browse channels
- Make a map
- Download unsecured data

Self-Registered Users:

- Save maps and searches
- Search unsecured data
- Browse channels
- Make a map
- Download unsecured data

Registered Users:

- All of the above plus access special functions and secured data
- Provide data





User Community

The Mississippi Geospatial Clearinghouse provides data and services to:

- ❑ Local governments;
 - ❑ State and Federal agencies;
 - ❑ Planning and Development Districts;
 - ❑ Private entities; and
 - ❑ Individual citizens.
-



Channel Organization

- ❑ The ESRI Portal Toolkit organizes data by metadata records
 - ❑ Overwhelming number of metadata records
 - ❑ New records every month
-



Channel Organization

MISSISSIPPI GEOSPATIAL CLEARINGHOUSE

[Home](#) [Launch Map Viewer](#) [Advanced Search](#) [Data Download](#)

[About](#) [Help Center](#) [Help on this page](#)

User Functions [New Search](#) [Refine Search](#)

Records Found: 297

[Forgot Password?](#) [Forgot Username?](#)

where: North: 35.3 South: 29.7 East: -85.716 West: -93.284
Category: All Categories
Resource Type: Any Type/Format
Time Frame: Any Time

297+ Metadata record(s) retrieved in 0.016 seconds.

Currently displaying records 1 - 15 of 297
Pages [1](#) [2](#) [3](#) [4](#) [5](#) [6](#) [7](#) [next](#) [>>](#)

Metadata Results


Content Title: PEARL RIVER LIDAR [\[more like this ...\]](#)

Publisher: Mr. Elijah Hunt, U.S. Army Corps of Engineers Vicksburg District

Coverage Area: United States Mississippi Pearl River County Flood Plain Management

Content Type: Downloadable Data

[View Details](#) [View All Metadata](#) [Download Data](#)





Channel Goals

- ❑ Categorize like metadata into Channels
 - ❑ Identify Channel Stewards
 - ❑ Create collaborative groups
-



Channel Development

Multiphase Approach

- Phase One - Quickly Organize and Standardize
 - Phase Two - Provide a long-term platform for organization
-



Phase One Design Goals

- ❑ Standardized look and feel
 - ❑ Organize metadata records
 - ❑ Data Centric
-



MISSISSIPPI GEOSPATIAL CLEARINGHOUSE



[About](#)
[Help Center](#)
[Help on this page](#)

[Home](#) [Launch Map Viewer](#) [Advanced Search](#) [Data Download](#)

User Functions
[Login](#)
[Create a new account!](#)
[Forgot Password?](#)
[Forgot Username?](#)

Home
Welcome! [Note: Allow p](#)
Use the below
Keyword Search

Or use the A

The **Mississ**
comprehens
Systems (C
academia, and the private sector.

The **goal of the MGC** is to make the application of spatial information technologies within the State of Mississippi more efficient by reducing the duplication of spatial data production and enhancing distribution through effective cooperation, standardization, communication, and coordination.

By visiting the MGC you can **view and obtain GIS data, maps, information**, and much more to help you build effective GIS applications.

Please explore our Clearinghouse site and discover the data and services we offer.

Data Categories

- [Aerial Photography](#)
- [Survey Control](#)
- [Governmental Boundaries](#)
- [Elevation](#)
- [Transportation](#)
- [Photography](#)
- [Property Ownership](#)

Application Areas

[WFP](#)

Current Events

- [Education/Outreach](#)
- [News and Events](#)

Help Center

- [Getting Started](#)
- [GIS Resources](#)

[Aerial Photography](#)
[Survey Control](#)
[Governmental Boundaries](#)
[Elevation](#)
[Transportation](#)
[Hydrography](#)
[Property Ownership](#)



User Functions

[Login](#)

[Create a new account!](#)

[Forqot Password?](#)

[Forqot Username?](#)

Channel: | ▼

- [Interactive Download](#)
- [Web Services](#)

Introduction

The Governmental Boundaries Channel lists and describes governmental and jurisdictional boundaries used in the State. Some examples of the types of boundary files include: State boundaries, County boundaries, Municipality boundaries, Congressional Districts, Census Blocks, Zip Code Areas, and National and State Parks.

Some examples of the entities that have jurisdiction over setting and maintaining boundaries are: Mississippi Secretary of State, U.S. Census Bureau, Mississippi Dept. of Wildlife, Fisheries, & Parks, The National Park Service, and The National Forest Service.

Data Download

The MGC provides the Governmental Boundaries for download using the functionality of the Clearinghouse to select a requested area and define the needed output format. This functionality can be accessed by selecting the Interactive Download link above this text, navigating to the bottom of this page and selecting the "Go To Website" link for the dataset of choice.

Web Services

The MGC currently offers web services of the Governmental Boundaries datasets that can be consumed by certain clients. These web services are Web Map Services (WMS) and follow the Open GIS Consortium (OGC) standards. This functionality can be accessed by selecting the Web Services link above this text, navigating to the bottom of this page and selecting the "View Map" link for the Service of choice. The service will perform best if the map viewer is launched before the service's "View Map" link is selected.



ESRI Channel Editor

The screenshot shows the ESRI GIS Portal - Channel Editor application window. The window title is "ESRI GIS Portal - Channel Editor". The menu bar includes "File", "Channel", and "Help". The toolbar contains icons for file operations (New, Open, Save, Print, Refresh, Undo, Redo, Help) and a star icon. The main interface is divided into two panes. The left pane shows a tree view of the channel structure:

- Governmental Boundaries
 - Interactive Download
 - Interactive Download
 - StateOrTerritory
 - County Boundaries
 - Incorporated Cities
 - Census Blocks (2000)
 - Census Tract 2000
 - Reserve Area Land
- Web Services
 - Web Services
 - MGC Governmental Boundaries

The right pane is titled "Channel Properties" and has tabs for "Channel Properties", "Category Properties", "Section Content", "Preview", and "Preview XML". The "Channel Properties" tab is active, showing the following fields:

- General Information
 - Name:
 - Title:
 - Introduction:
 - About:
 - Parent Channel:



Phase Two Goals

- ❑ Non-Standardized look and feel
 - ❑ Meet the needs of the individual community
 - ❑ Organize metadata records and services
 - ❑ Identify Channel Stewards
 - ❑ Establish collaborative groups
-



Channel Steward Selection

- ❑ Subject Matter Experts
 - ❑ Willingness to participate
 - ❑ Willingness of Organization to participate
 - ❑ Ability to “work well with others”
 - ❑ Available time
 - ❑ Diversify channels among different parties
-



Channel Stewards

- ❑ Geodetic Control – Mississippi Department of Transportation
 - ❑ Elevation and Bathymetry – US Army Corps of Engineers
 - ❑ Orthoimagery – Mississippi Department of Environmental Quality
 - ❑ Hydrography – Mississippi Automated Resources Information System
 - ❑ Transportation – Mississippi Department of Transportation
 - ❑ Government Boundaries – Mississippi Automated Resources Information System
 - ❑ Cadastral – Mississippi State Tax Commission
-



Channel Collaboration

- Initial design meeting included the Steward and all relevant stake holders for each channel
 - Focus of each Channel was determined
 - Complexity of each channel was determined
 - Topic discovery
-



Channel Focus

The focus for each channel was either:

- ❑ Data centric for the desktop GIS user; or
 - ❑ Participation oriented for future stakeholders
-



Data Centric Focus

- Continue to focus on data distribution
 - Provide News and Update notices
 - Provide Web Services
-



User Functions

[Login](#)

[Create a new account!](#)

[Forgot Password?](#)

[Forgot Username?](#)

Channel: | →Transportation

Welcome to the Transportation Channel. The Mississippi Department of Transportation is providing stewardship for this channel.



INTRODUCTION

The purpose of this channel is to provide visitors to the Clearinghouse information about all transportation map data and services for the State of Mississippi. The different modes of transportation, including road, rail, air and water, are constantly changing and growing. Information about the datasets representing these modes is also constantly being updated. Check out the News and Events section for any new developments, link to maps and services at other locations through the Links section, and get access to existing data through the Downloadable Data section.



Interstates

NEWS AND EVENTS

ONLINE MAPS AND LINKS

Downloadable Data

The transportation datasets below are available for download through the Clearinghouse. For a complete list of all datasets available for download [Click Here](#).



Participation Oriented

Communicate:

- Cost savings through participation
 - Reduce in-office traffic
 - Maps available online
 - Backup and Recovery
 - GIS Conversion Assistance
- Community development through a broader data distribution



MISSISSIPPI
GEOSPATIAL
CLEARINGHOUSE



[About](#)
[Help Center](#)
[Help on this page](#)

[Home](#) [Launch Map Viewer](#) [Advanced Search](#) [Data Download](#)

User Functions

[Login](#)

[Create a new account!](#)

[Forgot Password?](#)

[Forgot Username?](#)

Channel: |→Property Ownership

- Welcome to the Property Ownership Channel. The Mississippi State Tax Commission is providing stewardship for this channel.

Local communities who participate with the Mississippi Geospatial Clearinghouse by providing data and information are starting to experience many benefits. These benefits, which will be realized to different degrees for each community, are listed below.

REDUCE PUBLIC REQUESTS

Local governments are beginning to realize the benefits of providing parcel data to the Clearinghouse. A noticeable reduction in data and map requests made to Tax Assessors is one such benefit.

PUBLIC ACCESS FOR COMMUNITY DEVELOPMENT

GIS CONVERSION SUPPORT

DATA DISPLAY AND DISTRIBUTION

ONLINE MAPS

STATUS MAPS

PARTICIPATION



Channel Complexity

- ❑ Different levels of complexity determined by Stewards technical ability
 - ❑ Continued maintenance through the ESRI Channel Editor
 - ❑ Inclusion of JavaScript for accordion menus
 - ❑ Animated GIF files easily communicate available data layers
-



User Functions

[Login](#)

[Create a new account!](#)

[Forgot Password?](#)

[Forgot Username?](#)

Channel: |→Transportation

Welcome to the Transportation Channel. The Mississippi Department of Transportation is providing stewardship for this channel.



INTRODUCTION

The purpose of this channel is to provide visitors to the Clearinghouse information about all transportation map data and services for the State of Mississippi. The different modes of transportation, including road, rail, air and water, are constantly changing and growing. Information about the datasets representing these modes is also constantly being updated. Check out the News and Events section for any new developments, link to maps and services at other locations through the Links section, and get access to existing data through the Downloadable Data section.

NEWS AND EVENTS

ONLINE MAPS AND LINKS



Downloadable Data

The transportation datasets below are available for download through the Clearinghouse. For a complete list of all datasets available for download [Click Here](#).



Topic Discovery

- ❑ Channel Meeting was the first time that some stakeholders had met
 - ❑ Datasets were discussed and shared
 - ❑ Ongoing and upcoming activities were discussed
-



Steward Training

- ESRI Channel Editor
 - Best Practices
 - JavaScript training
 - Channel review procedures
 - Interaction with Test Server
 - Approval
 - Update to Production Server
-



Channel Benefits

- ❑ Customized Channels relevant to data categories
 - ❑ Recognition of a Steward for data categories
 - ❑ Establishment of discussion groups for data categories
-



Contact Information

- Gary Hennington
 - The Geospatial Group, a Division of Information Management Systems, Inc.
 - ghennington@thegeospatialgroup.com
 - Craig P. Orgeron, Ph.D.
 - Mississippi Department of Information Technology Services
 - orgeron@its.state.ms.us
-