

Implementation of a Mobile Enterprise Solution at the Bayerische Staatsforsten

August 5th, 2008

Bernhard Müller

Topics

- **Introduction BaySF** *(slides are missing because of the file size)*
- **Targets**
- **Working Process**
- **Demonstration**
- **Interfaces**
- **Hardware**

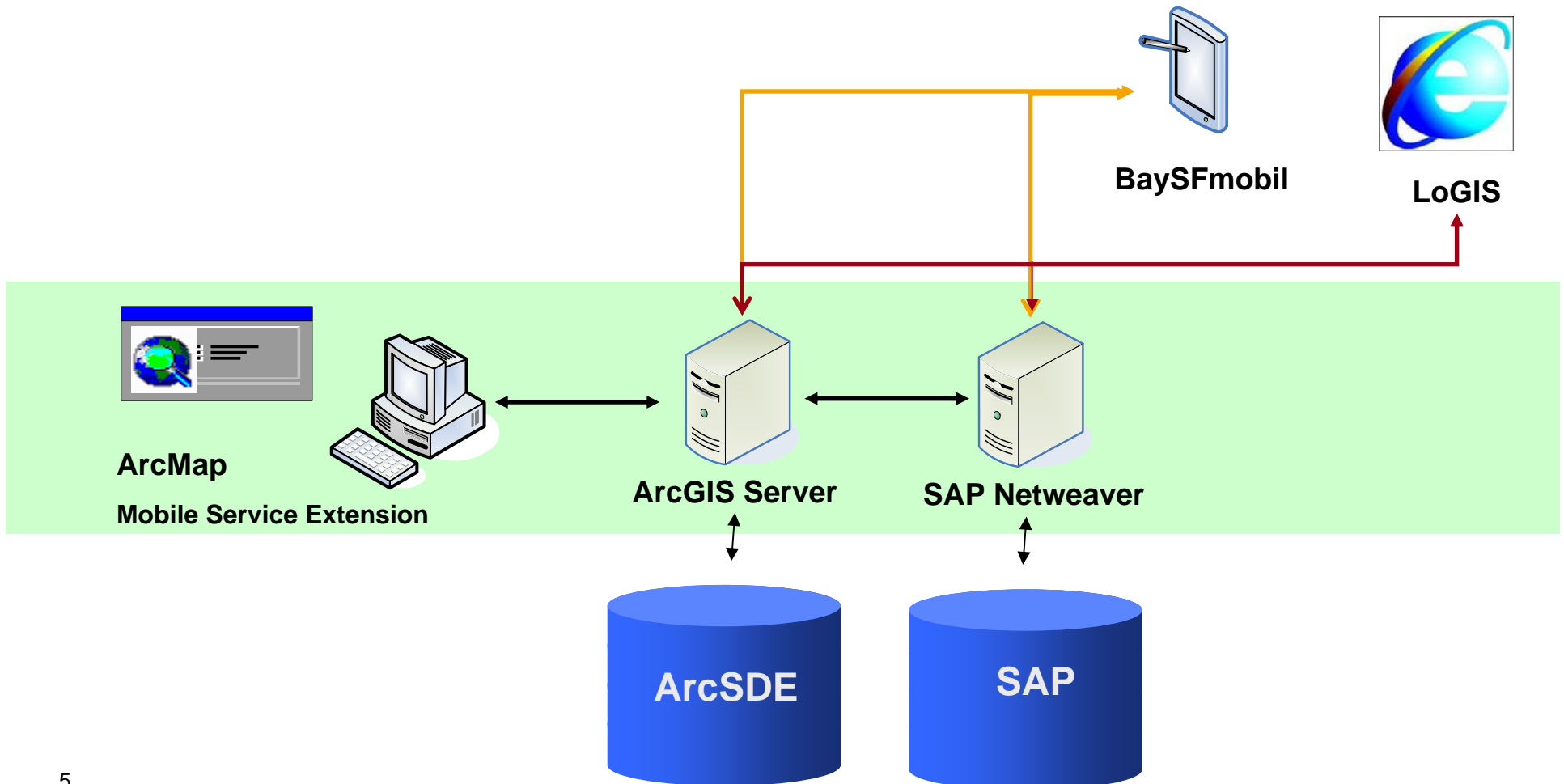
Introduction

BaySF, the biggest forest concern in Germany



- **Easy to use mobile solution with (geo)data to manage timber stacks and additional point and to visualise maps of the forest stand BaySF.**
- **Generic mobile GIS-Application**
- **Reducing of interfaces**
- **Use of standard software where possible**
- **Use of standard technologie (SOA)**

Process view on the system architecture



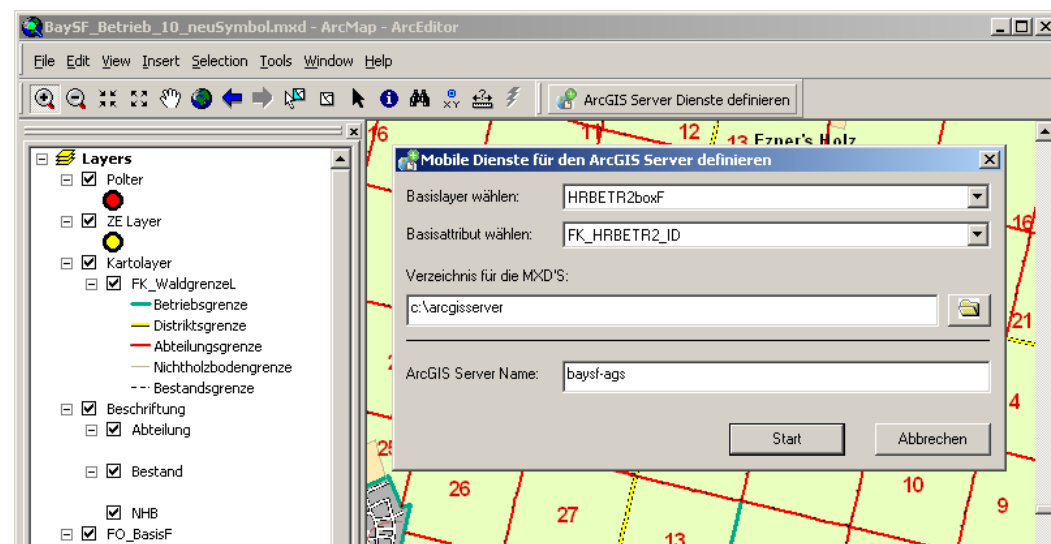
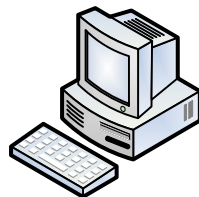


- Automatic generation of the ArcGIS Server services
- to pull and push the data
- possible to generate the services based on the envelopes for the 41 regional forest companies of the BaySF
- Flexibility to deploy geodata to fulfill requirements of new business processes



ArcMap

Mobile Service Extension



Service Management



Author

Serve

Use

ArcGIS SERVER MANAGER
sharing geographic information

Logged in as baysf-ags\administrator - Donnerstag, 5. Juni 2008 10:00
Settings | Help | Logout

Home Services Applications GIS Server

Folders

- Add | Delete | Properties
- BAYSF-AGS
 - BAYSF_MOBILE
 - Mobile

Services in Mobile <<1 - 25 of 43>>

Publish a GIS Resource | Add New Service

Start | Stop | Pause | Delete

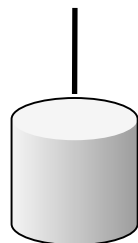
Name	Type	Status	Instances (In Use/Running)	Edit
Betr_NULL_OID_1	Map Service	Started	0/0	
Betr_NULL_OID_10	Map Service	Started	0/0	
Betr_NULL_OID_11	Map Service	Started	0/0	
Betr_NULL_OID_12	Map Service	Started	0/0	
Betr_NULL_OID_13	Map Service	Started	0/0	
Betr_NULL_OID_14	Map Service	Started	0/0	
Betr_NULL_OID_15	Map Service	Started	0/0	
Betr_NULL_OID_16	Map Service	Started	0/0	
Betr_NULL_OID_17	Map Service	Started	0/0	
Betr_NULL_OID_18	Map Service	Started	0/2	
Betr_NULL_OID_19	Map Service	Started	0/0	
Betr_NULL_OID_2	Map Service	Started	0/0	
Betr_NULL_OID_20	Map Service	Started	0/0	

Related Help Topics

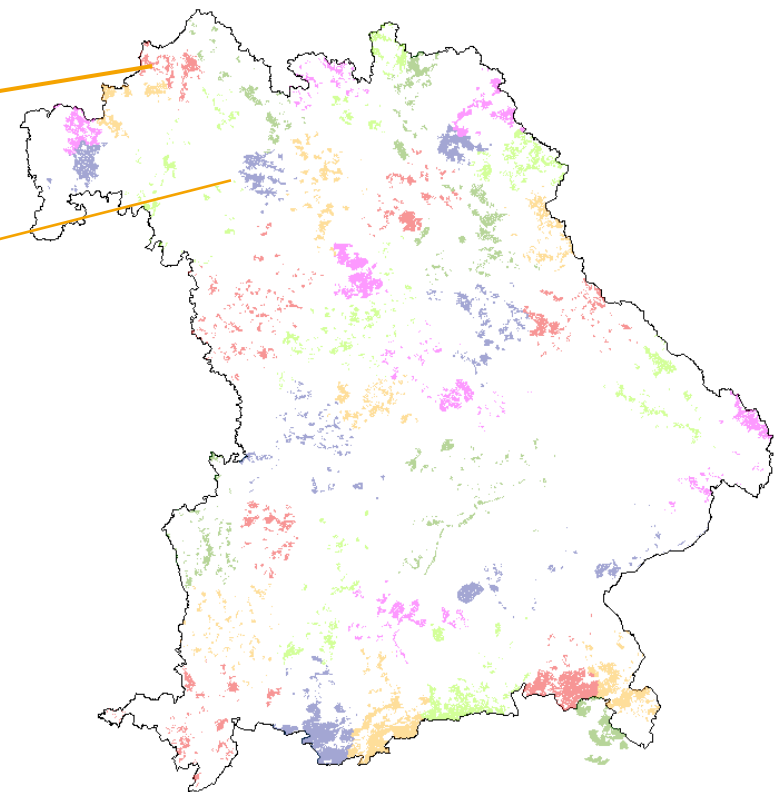
- Publishing a GIS resource to the server
- Tutorial: Publishing a map service
- Adding a new service
- Organizing services



ArcGIS Server

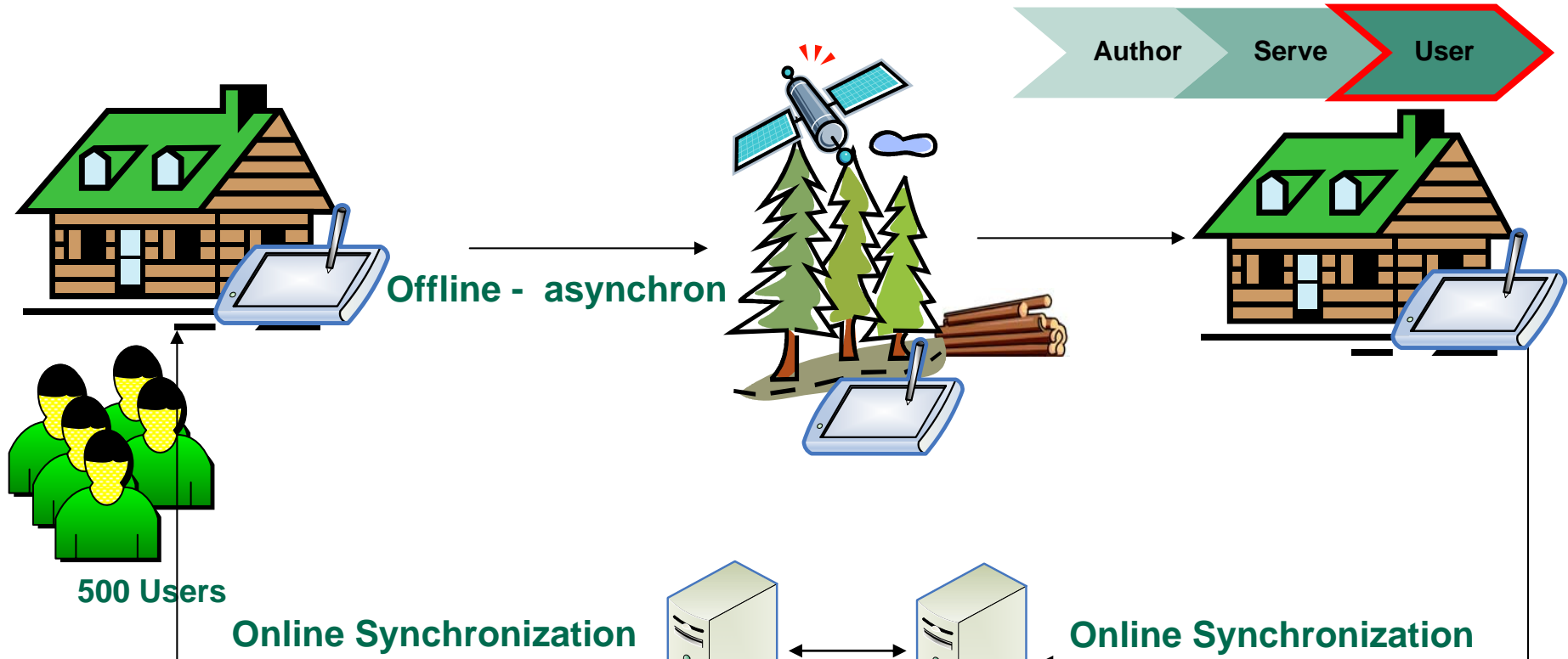


ArcSDE



- One service is generated for each regional forest company

Solution of Nature vs. Technic Problem

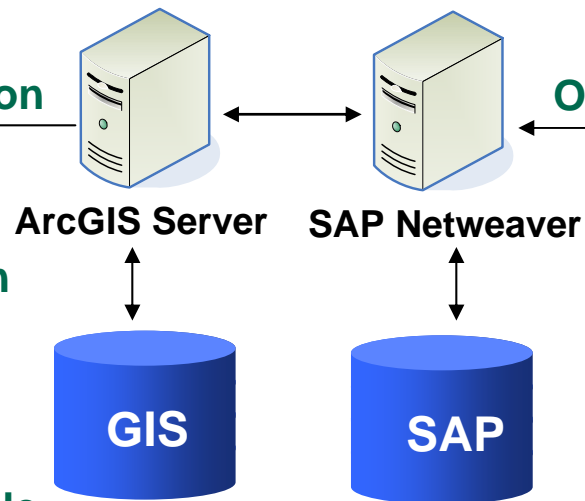


Non edit features:

- Forest area classification
- Rasterdata

Edit features:

- Timber stacks, Bark beetle

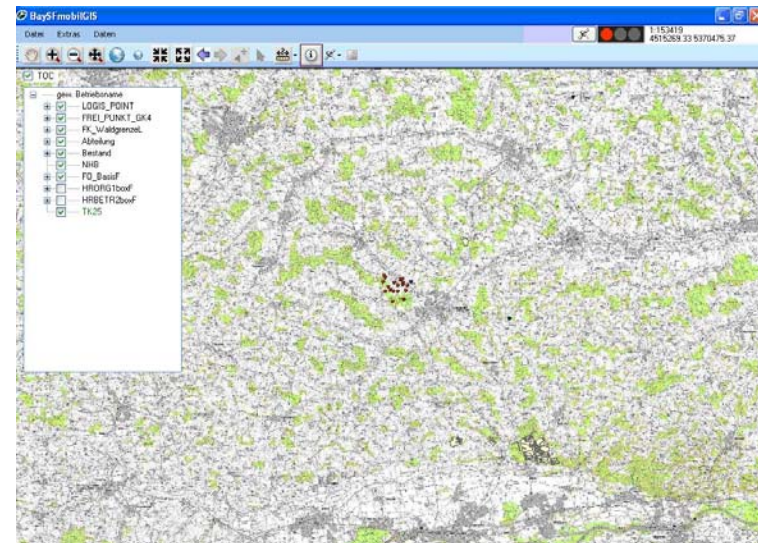


MobileForst

FB:	10	Rev:	7175	GJ:	2008	HAB:	501						
BA	So	Gü	St	La	Du	Ri	Los	Pm	Stück	Schätz-m.	Sti		
FI	L	B	2a	12	25	U	11	2	2310	1125,70	N		
KIE	L	BC	3a	18	34	U	12				N		
FI	L	B	1b	12	18	U	11	2			N		
FI	SL	B	1b	4	17	U	13				N		
int. Z.	150004		Masse	120,50						Suche			
Baumart	So	Gü	Ri	Satz	Stück	1	2	3					
FI	EI	L	A	U	löschen								
TA	ES	SL	B	E	Sätze	Schätz-	4	5	6				
KIE	BAH	BL	C		ändern	maß							
LÄ	SER	ER	D		Polter	Höhen	7	8	9				
STR	BI	IS	AB			eingeben							
DGL	SNH	BS	BC		Etc.	KLST	0	.					
BU	SLH	IS	CD							SP			
<< ☀ Lö ↓ ↑ ← →													

Demo

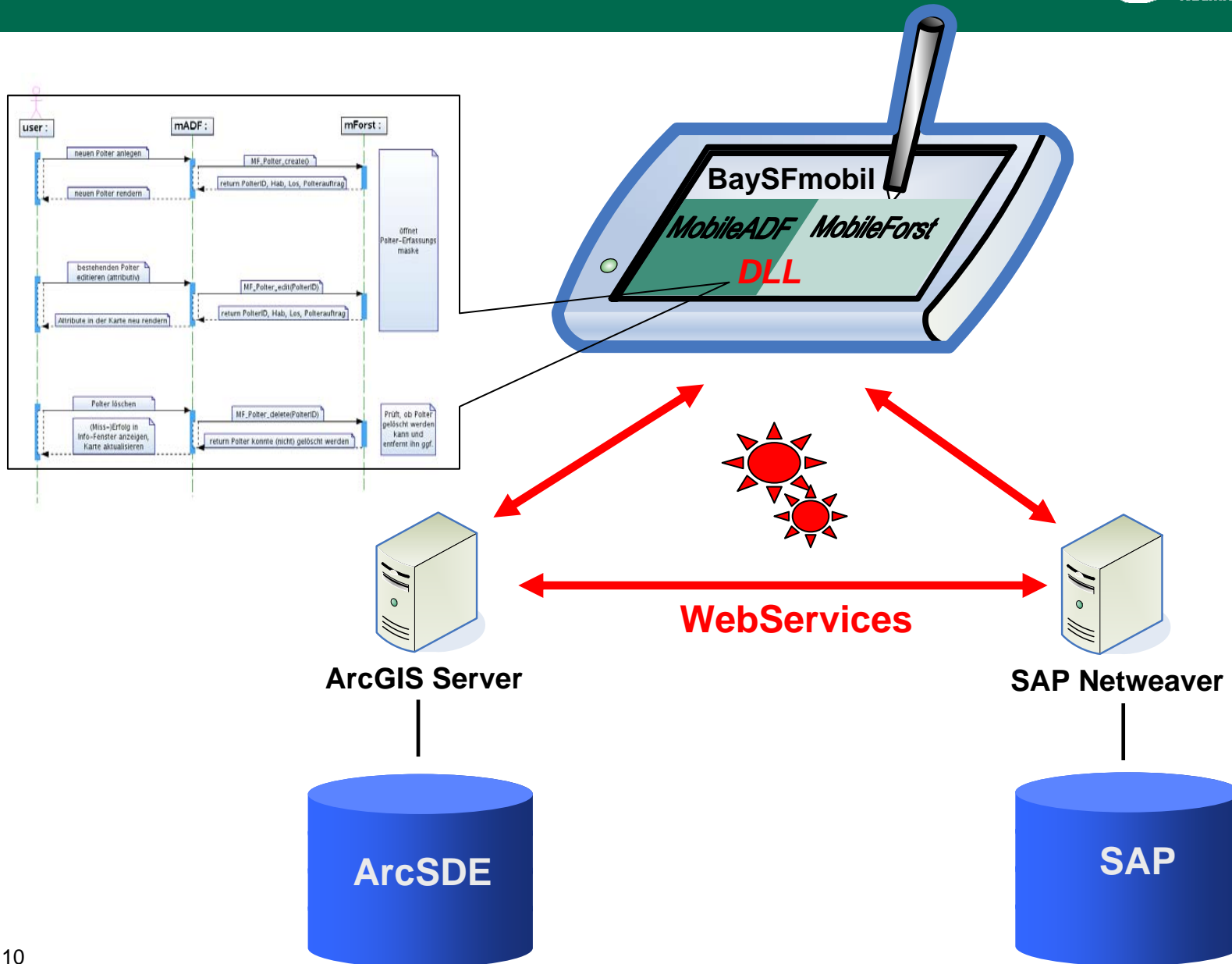
BaySFmobil



Functionality mADF

- Timber stack management
- additional free point editing
- Navigation
- GPS position
- Identification
- Synchronization

Interfaces



client hardware

- tablet PC with Windows XP
- eventually Future use of PDA with Windows mobile for truck driver or lumber jacks

Thank you for your attention!

bernhard.mueller@baysf.de

www.baysf.de