

Social Justice Goes Geospatial

New Ways to Look At Data

Urban Strategies Council Oakland, California

Steve Spiker (GISP)
Director of Research & Technology

July 14, 2010



Outline

- ▶ (This presentation file is heavily abbreviated due to ESRI file size limitations- link to full presentation on final slide)
- ▶ Who we are
- ▶ What we do
- ▶ How GIS transforms decision making
- ▶ How GIS empowers communities



The Urban Strategies Council

- ▶ Community-building, support and advocacy organization
- ▶ Our mission is to eliminate persistent poverty by working with partners to transform low-income neighborhoods into vibrant, healthy communities

Economic
Opportunity

Education
Excellence

Community
Safety &
Justice

Research, Evaluation &
Technology

Community
Capacity
Building



Research Program Goals

- ▶ Increase the availability and access to public data by residents and CBOs
- ▶ Increase capacities of residents and CBOs to collect, analyze and use data and information to support their change efforts
- ▶ Increase access to information technologies in low-income communities of color
- ▶ Increase the capacities of low-income residents and CBOs to use information technologies



Research Program Strategies

- ▶ Develop a data warehouse and online data service to increase access to public data and information
- ▶ Develop and offer training and technical assistance residents and CBOs
- ▶ Increase the amount of information technologies available to CBOs and residents
- ▶ Develop projects to centralize some technology-related services that cannot be economically sustained by individual organizations



Data?

1. Students- grades, classes, absent days, suspensions, graduations
2. Probationers/Parolees- demographics, crimes, sentences
3. VITA Tax Campaign- full tax returns, surveys
4. Community Surveys – 1000's of variables at block level
5. Parcel data, foreclosures, assessors data
6. Community service providers
7. Health- morbidity, mortality and vital stats at address or block level
8. Crime-address level records for 7 yrs
9. Insurance data for CA premiums and policies
10. HMDA Record level loan data
11. Building and business permits
12. Census et al



Our mission is to eliminate persistent poverty by helping to transform low-income neighborhoods into vibrant, healthy communities.



SEARCH: GO

Program Areas

Economic Opportunity

Foreclosure Crisis

[Foreclosure Timeline](#)

[Foreclosure Glossary](#)

[Foreclosure Maps](#)

[Foreclosure Reports](#)

[Foreclosure Resources](#)

[Community Land Trust](#)

Community Safety and Justice

[Education Excellence](#)

Information and Technology

[InfoAlamedaCounty](#)

[InfoOakland](#)

[Community Capacity Building](#)

About Urban Strategies Council

Donate



Google Translate

Select Language

Oakland Foreclosure Crisis

Oakland faces a severe and worsening foreclosure crisis. According to a [report](#) issued by Association of Community Organizations for Reform Now (ACORN), 3,021 of the high-cost loans made in 2006 in the Oakland area are likely to go into foreclosure. The costs to all of the stakeholders involved including homeowners, the City of Oakland, neighborhoods and lenders will be more than \$875 million. The crisis is disproportionately affecting Oakland's flatlands neighborhoods and residents. [Maps](#) produced by the Council indicate that defaults, trustee sales and bank-owned properties are all highly concentrated in City Council Districts 3, 6 and 7.

Urban Strategies Council is collaborating with a range of partners to construct a comprehensive response to the multi-faceted foreclosure crisis, which will include:

Timely, accurate data and information at the county, city and neighborhood levels.

Intensive outreach and education to victims and potential victims to direct them to existing resources and to help them avoid foreclosure and foreclosure rescue scams.

More trained financial counselors and the infrastructure to support them.

Strategies to address vacant foreclosed properties.

Engagement of the lending industry and policy makers to negotiate their role in both addressing the current crisis and developing long term solutions.

Our particular role includes the following components:

1. Research, data analysis and [mapping](#).
2. Development of a toolkit for the full range of stakeholders.
3. Resources for people facing foreclosures through [Alameda County CAN](#) and the development of a comprehensive foreclosure services collaborative.
4. Development of a plan for a [Community Land Trust](#) to acquire and rehabilitate vacant, foreclosed properties in Oakland.

For more information we have the following resources available online:

- [Foreclosure Timeline Guide](#)
- [Glossary of Foreclosure terms](#)
- [Maps](#)
- [Reports](#)

Facts at a Glance

Notice of Defaults (NOD)

Year	2006	2007	2008	2009
Annual Total	1,453	1,892	3,280	1,230
Total (06-09)	7,859			
Rate of Foreclosure Filings	1 in 19 Households			

Notice of Trustee Sale (NOT)

Year	2006	2007	2008	2009
Annual Total	664	1,332	1,838	603
Total (06-09)	4,437			
Rate of Foreclosure Filings	1 in 34 Households			

Real-Estate Owned (REO)

On 04/29/2009	2,140
Rate of Foreclosure Filings	1 in 34 Households



Different Types of REOs Require Different Strategies





Housing families and building communities

Support Us Projects

Home About Us What is a Land Trust Projects Our Homes Community Resources Support Us



The Oakland CLT has been awarded access to over \$5 million in Oakland Neighborhood Stabilization Program funding from the city of Oakland. We now have the financing to begin converting foreclosed homes into home ownership opportunities for working families in Oakland.

Welcome

The Oakland Community Land Trust is a joint project of the Urban Strategies Council and Oakland ACORN. Founded with the purpose of creating neighborhood stability and housing and economic development opportunities for low and moderate income residents...

About Us

The Oakland Community Land Trust is a not-for-profit organization founded by ACORN and Urban Strategies Council. We are currently forming a community-based Board of Directors. Our development partner is MAN Associates and our general contractor is Turner Group Construction...

What brings you here?

- City Staffer
Developer
Nonprofit employee
Homeowner
Homeseeker
Foreclosure victim
Financial Institution

Vote Results

Latest News

- Affordable Housing
Alameda County Community Asset Network
Foreclosure Home Ownership Project
Project Maps
Thanks for Signing Up!

Oakland Community Land Trust

Funding Secured!





Berkeley

CITY OF OAKLAND

Notices of Trustee Sales (NOTs) 2006 to 2008

Emeryville

Piedmont

Alameda

San
Leandro

Legend

— Highway

□ Oakland Boundary

Number of NOTs/Square Mile
per Census Tract

0 - 31

32 - 90

91 - 164

165 - 254

255 - 452



0 0.5 1 2 Miles

Note: Totals shown on each census tract represent the number of NOTs in that tract.

Source: DataQuick, FARES, and the City of Oakland.

© Urban Strategies Council, February 11, 2009. All Rights Reserved.



City of Oakland

Bank-Owned Properties (REO)

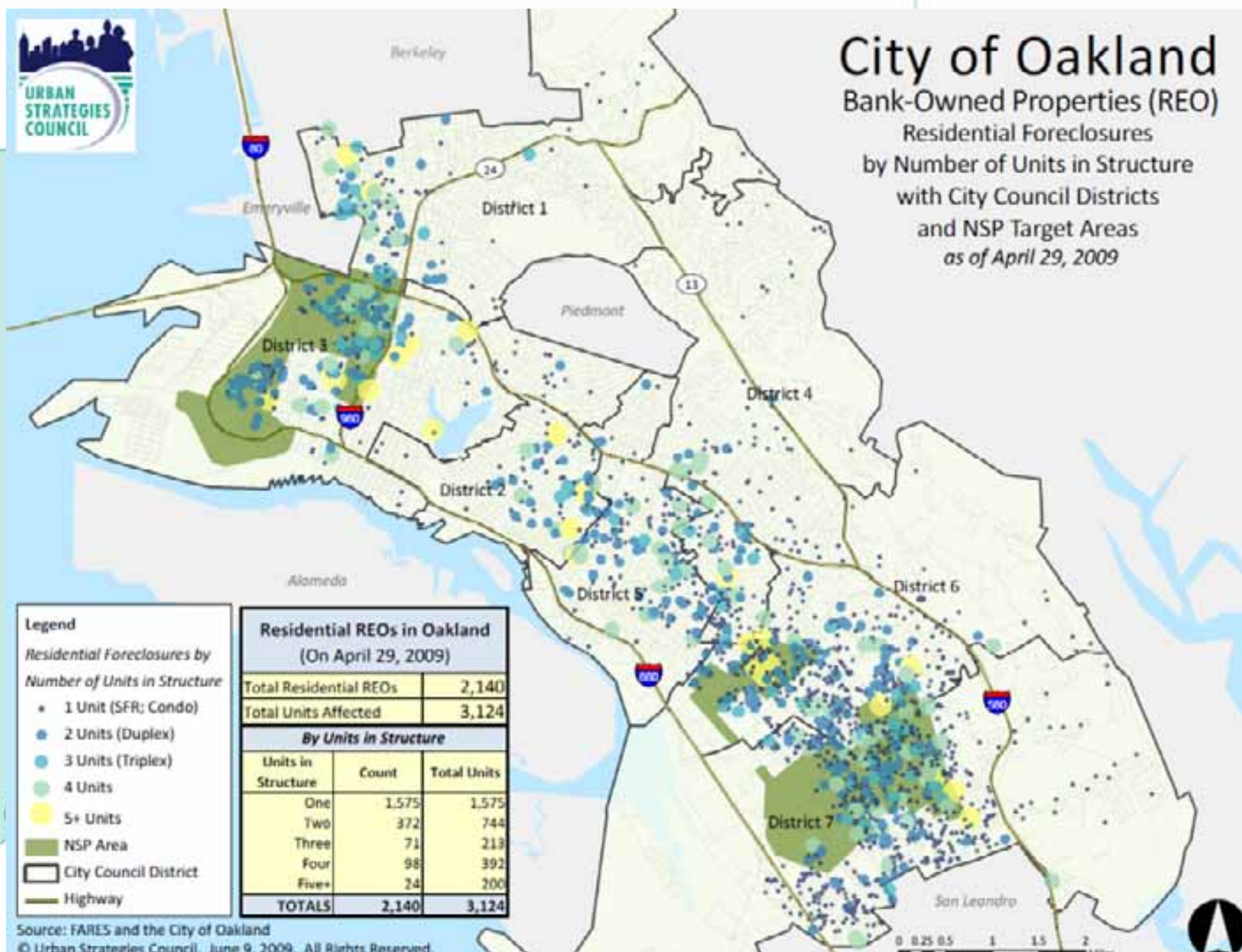
Residential Foreclosures

by Number of Units in Structure

with City Council Districts

and NSP Target Areas

as of April 29, 2009



Legend

Residential Foreclosures by
Number of Units in Structure

- 1 Unit (SFR; Condo)
- 2 Units (Duplex)
- 3 Units (Triplex)
- 4 Units
- 5+ Units

- NSP Area
- City Council District
- Highway

Residential REOs in Oakland (On April 29, 2009)		
Total Residential REOs	2,140	
Total Units Affected	3,124	
By Units in Structure		
Units in Structure	Count	Total Units
One	1,575	1,575
Two	372	744
Three	71	213
Four	98	392
Five+	24	200
TOTALS	2,140	3,124

Source: FARES and the City of Oakland

© Urban Strategies Council, June 9, 2009. All Rights Reserved.

0 0.25 0.5 1 1.5 2



West Oakland NSP Target Area with Bank-Owned Properties (REO) as of April 29, 2009






CITY OF OAKLAND






Reported Burglaries

by Community Police Beat
for 2008

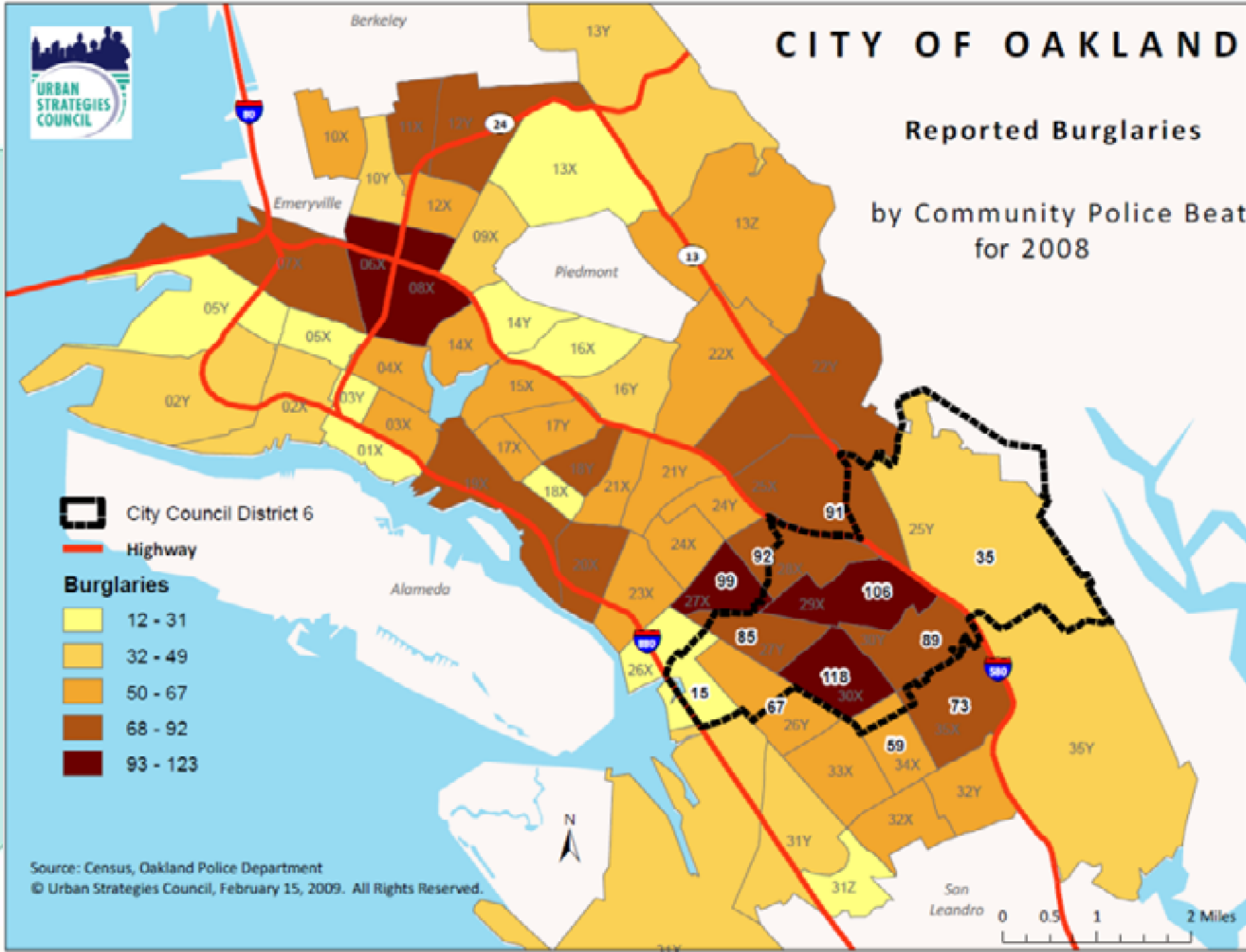
 City Council District 6

 Highway

Burglaries

-  12 - 31
-  32 - 49
-  50 - 67
-  68 - 92
-  93 - 123

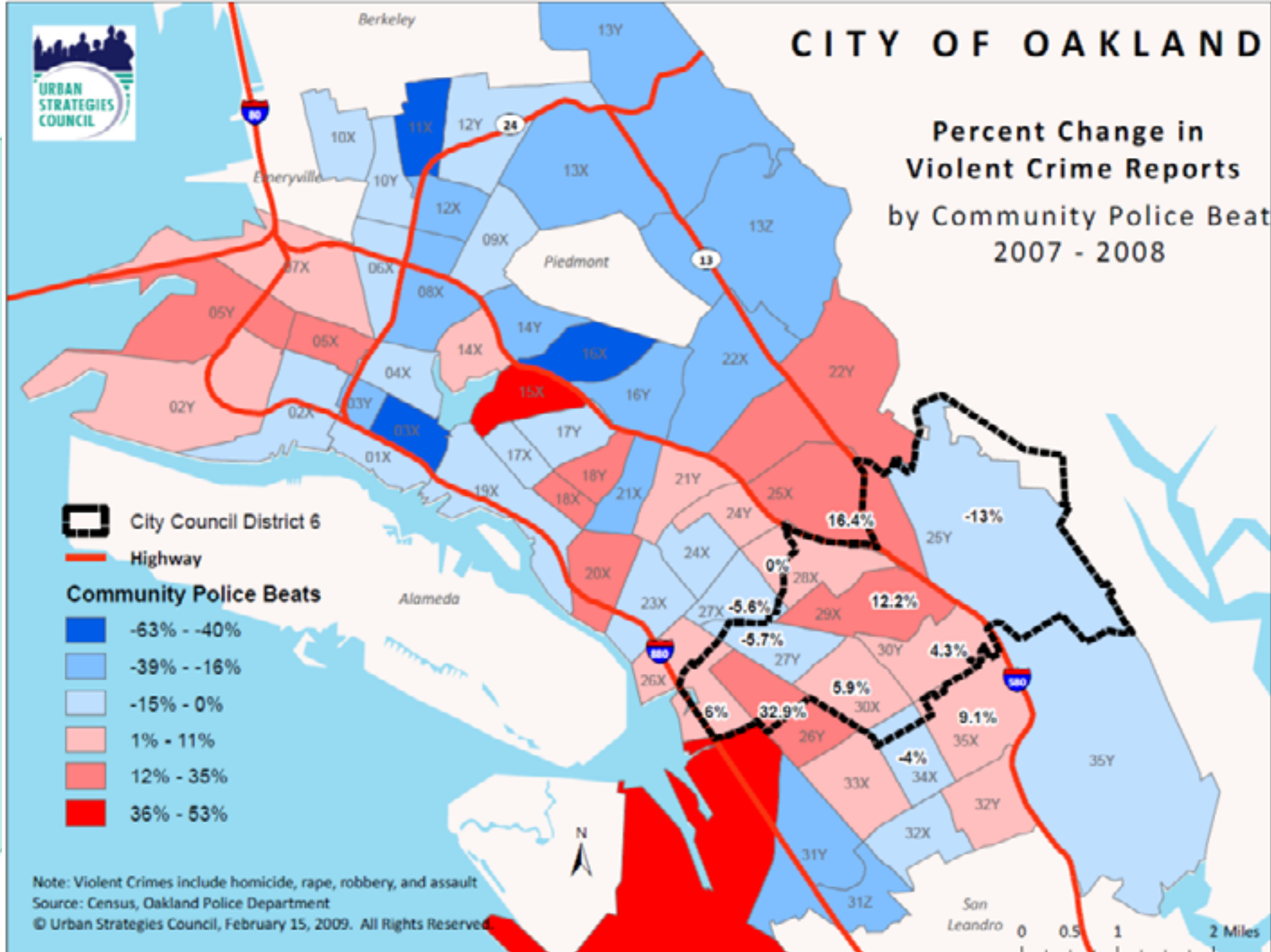
Source: Census, Oakland Police Department
© Urban Strategies Council, February 15, 2009. All Rights Reserved.





CITY OF OAKLAND

Percent Change in Violent Crime Reports by Community Police Beat 2007 - 2008



Note: Violent Crimes include homicide, rape, robbery, and assault
 Source: Census, Oakland Police Department
 © Urban Strategies Council, February 15, 2009. All Rights Reserved.

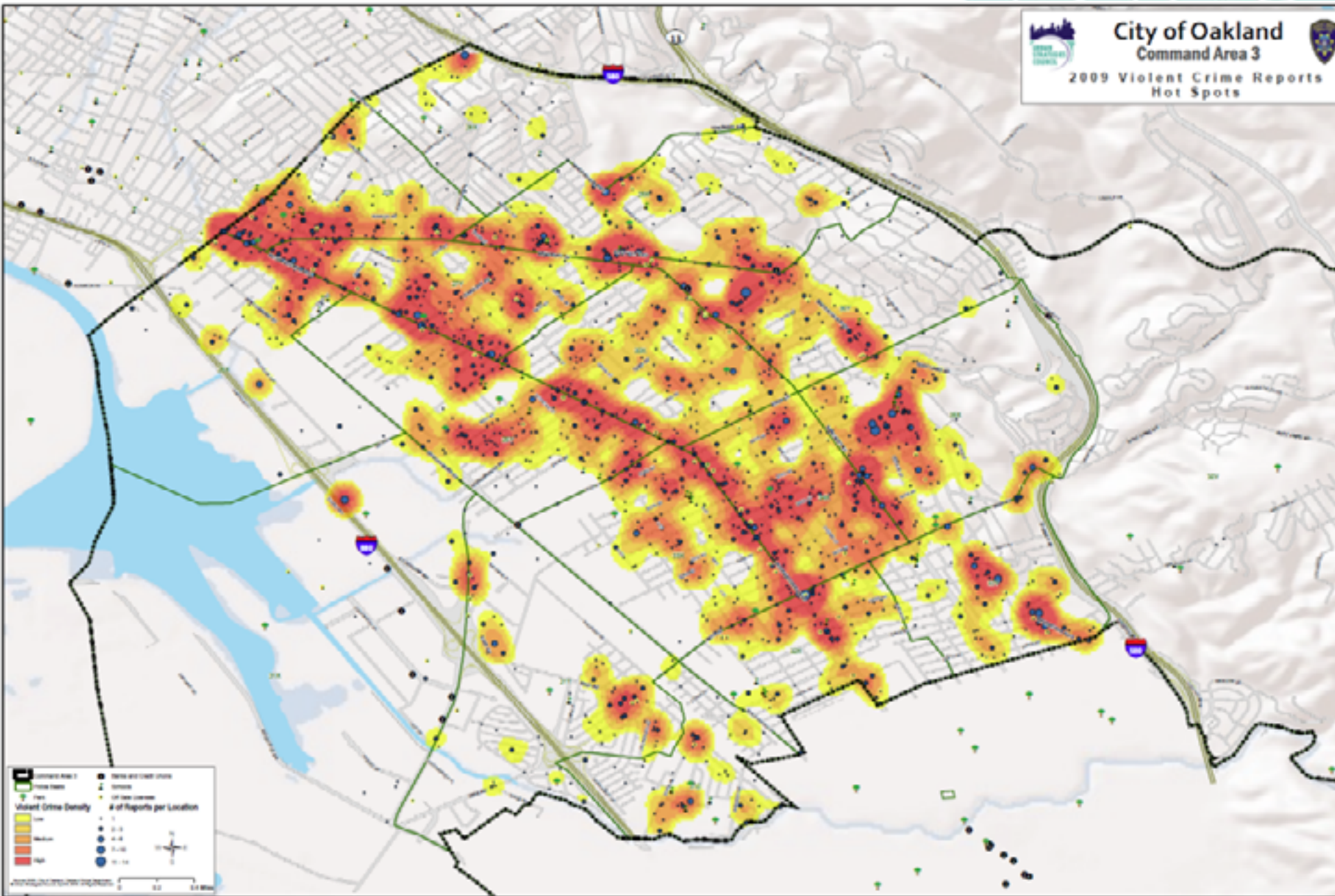




City of Oakland Command Area 3



2009 Violent Crime Reports Hot Spots

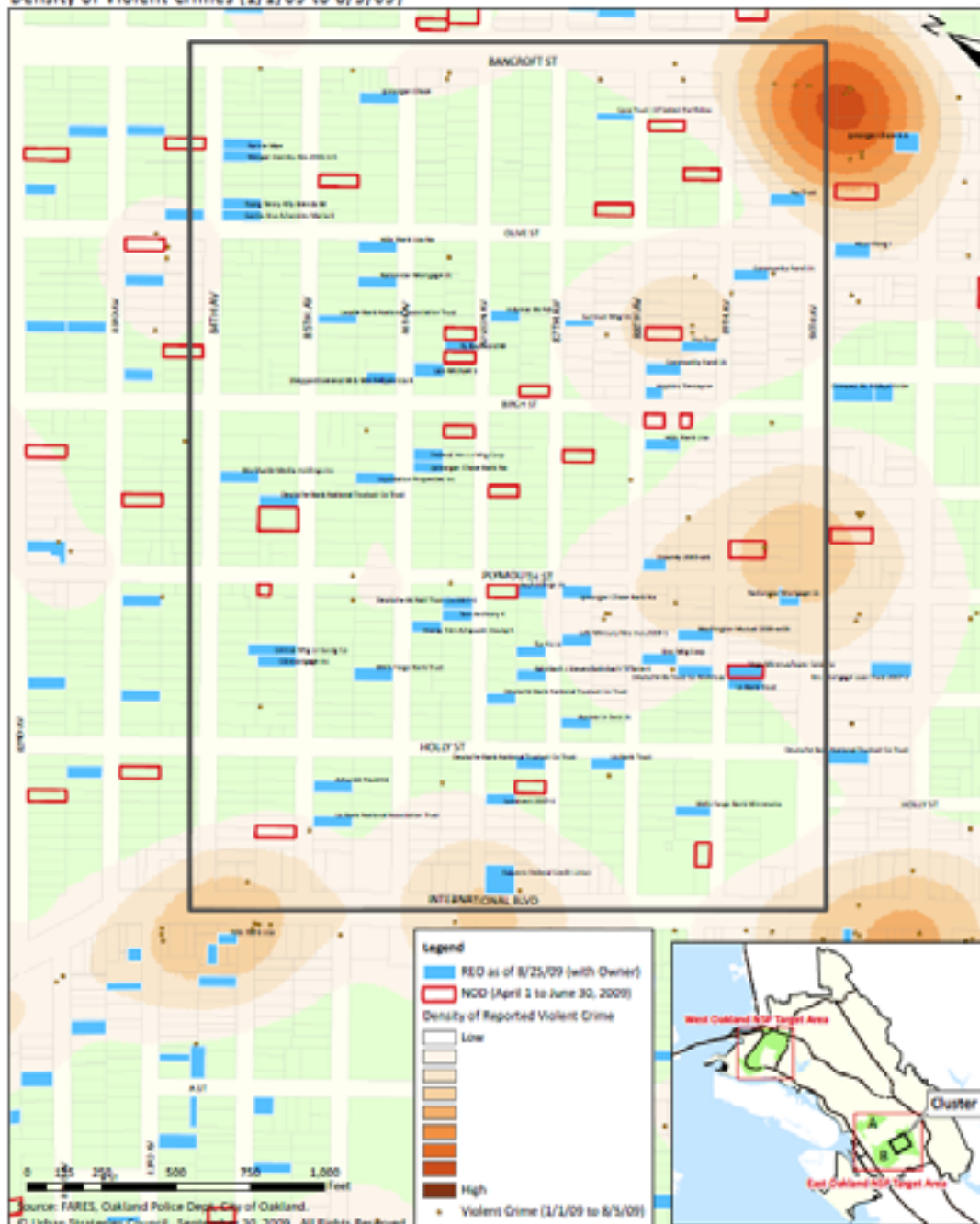


East Oakland NSP Target Area B - Cluster 1
 with REOs (as of 8/25/09), Notices of Defaults (4/1/09 to 6/30/09), and
 Density of Violent Crimes (1/1/09 to 8/5/09)



Infinity & Beyond

or what happens when other
 people get hold of your data and
 mess with it

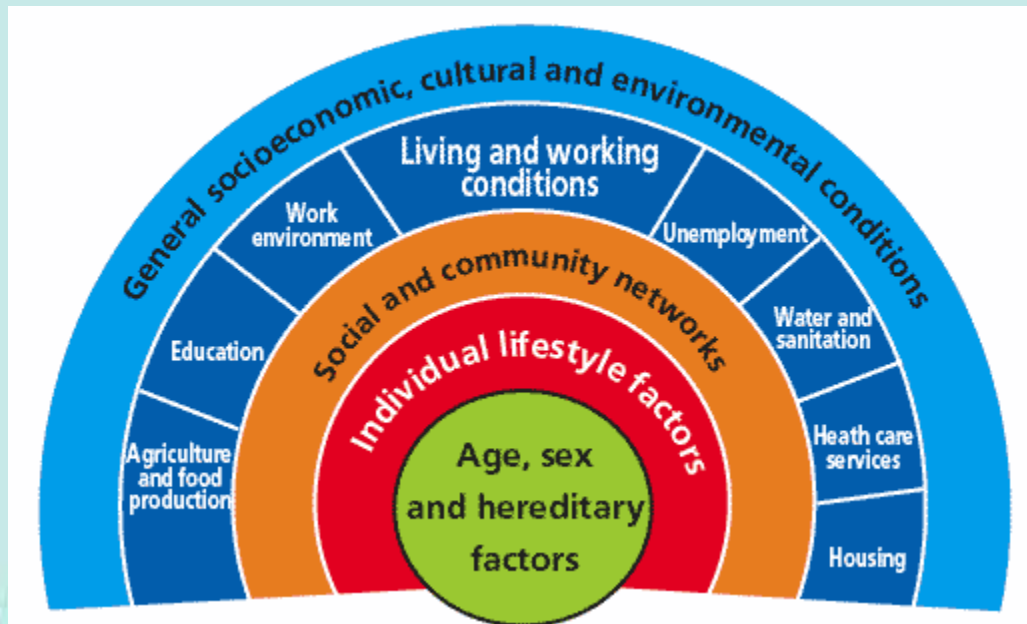


Source: FARES, Oakland Police Department, City of Oakland.
 © Urban Strategy Council, September 30, 2009. All Rights Reserved.



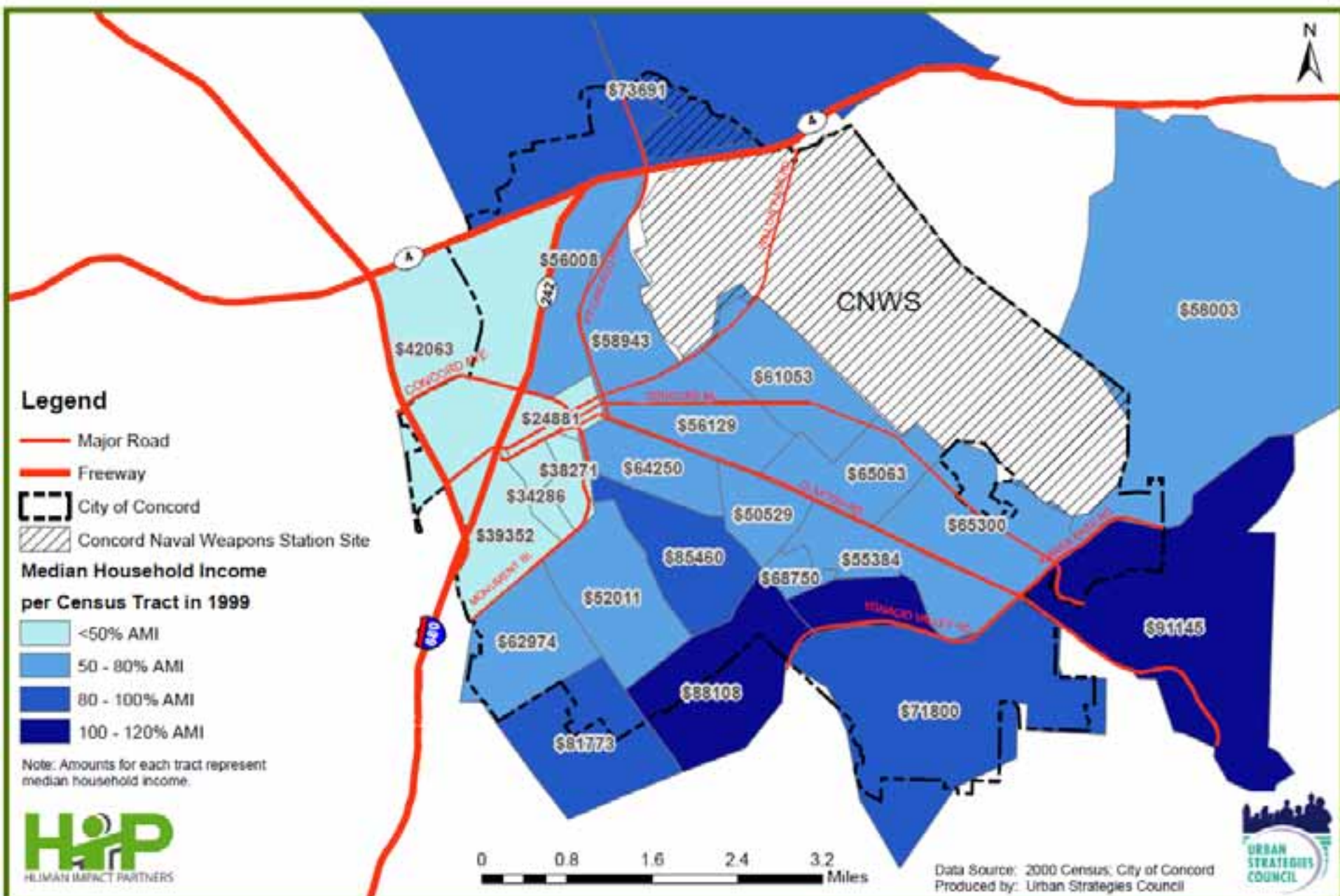
Health Impact Assessments

- ▶ Traditional Public Health approach
- ▶ Consider assets, impacts, possible mitigations
- ▶ Understand the community – Who will be affected (positively/negatively) by large developments



CNWS Reuse Project - Health Impact Assessment

Median Household Income



- ▶ Questions?
- ▶ Steve Spiker
- ▶ 510-463-2880
- ▶ steves@urbanstrategies.org
- ▶ Link to interactive presentation online here:
- ▶ <http://prezi.com/bey-azqaulb4/>

