

# SR 5/Overseas Highway ROW Needs Assessment



**ATEC**  
Advanced Transportation  
Engineering Consultants



ESRI International User Conference  
Presented by Lixin Huang  
July 13, 2010

Prepared by **ATEC**



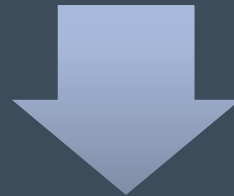
# What is Right of Way (R/W)

A strip of land for which an entity has a right to build, operate, and maintain a linear facility such as a road, railroad, or pipeline.



## Study Background

Identify existing and future R/W  
needs along SR 5/Overseas  
Highway



Provide input  
for surplus property along SR  
5/Overseas Highway





## Study Objectives

- Assess Current R/W Needs
  - Existing R/W data
  - R/W needs of the programmed projects
  - R/W needs of hurricane debris staging areas

## II. Project Tasks

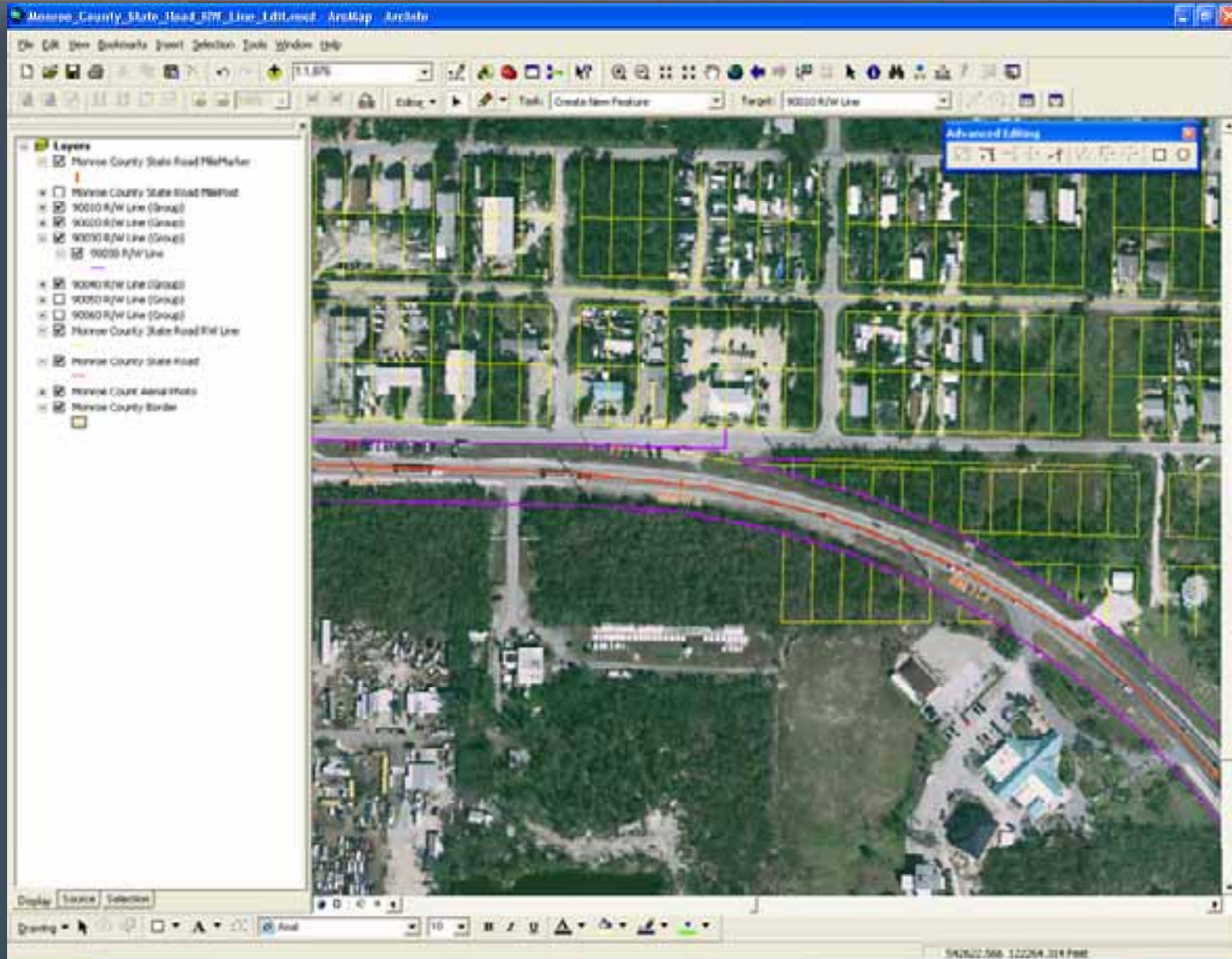
- Task 1: Obtain existing R/W data.
- Task 2: Identify the R/W needs for the Programmed Projects.
- Task 3: Compile hurricane debris staging areas.
- Task 4: Create GIS Project.



- Obtain the existing R/W data (Microstation DGN file format).
- Import DGN files into ArcMap.
- Edit R/W data in ArcMap.
- Save to GIS file format (Shapefile).



# Edit R/W Data in ArcMap



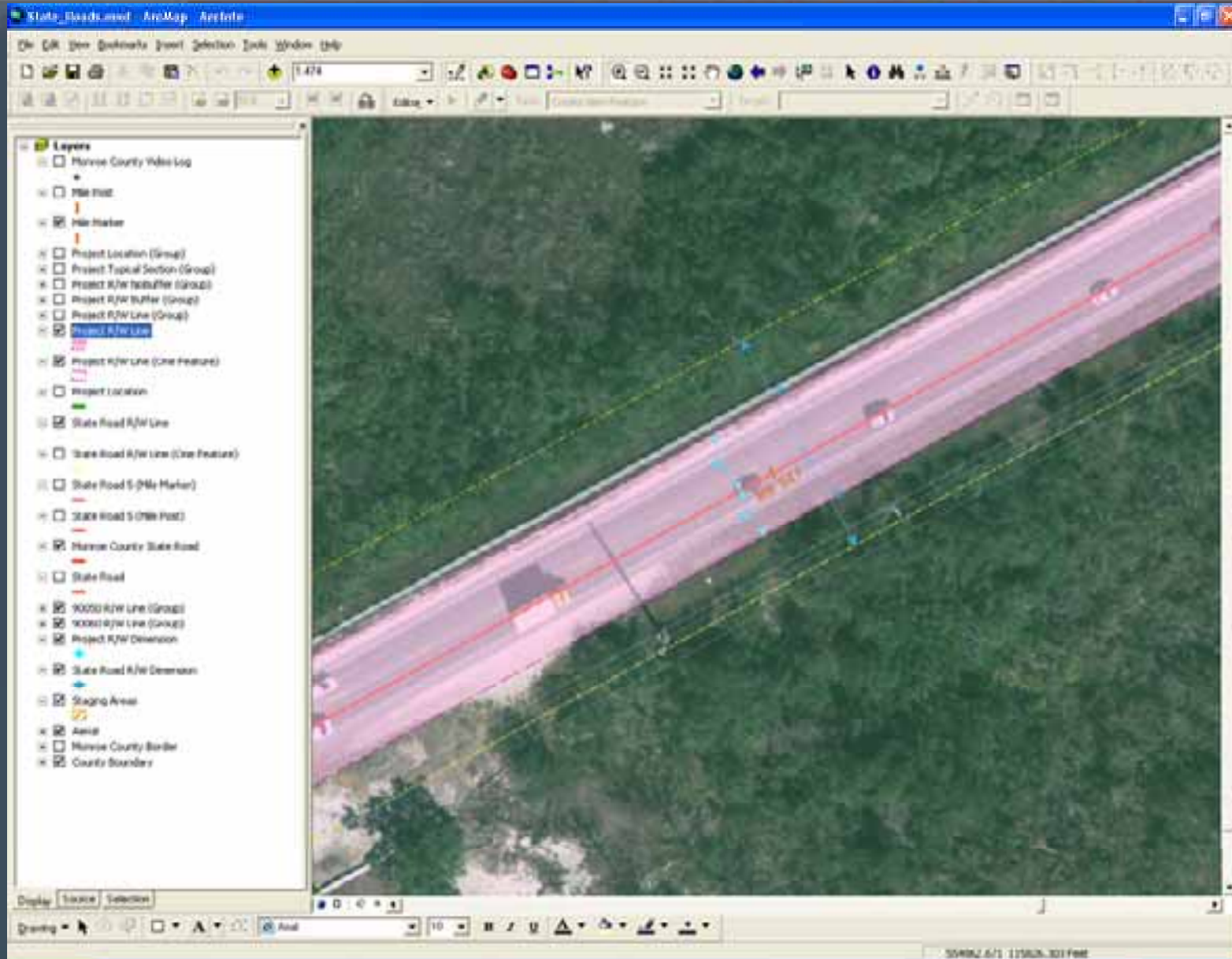


- Collect the R/W data for current and future programmed projects.
- Identify R/W needs for the programmed projects.
- Create R/W needs data in GIS shapefiles.





# R/W Needs of Program Projects



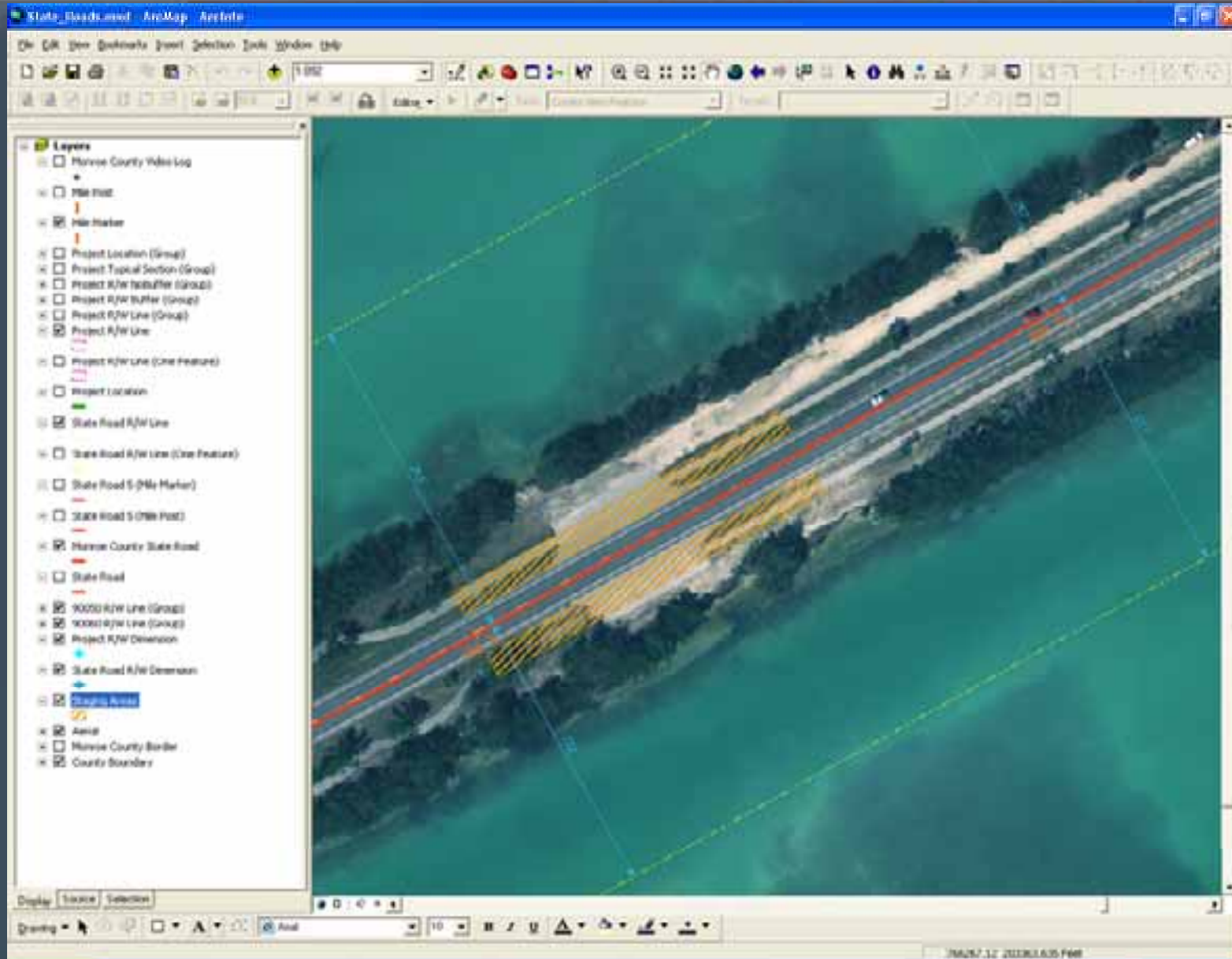


## Task 3: Compile Hurricane Debris Staging Areas

- Collect the locations of Hurricane debris staging areas.
- Compile Hurricane debris staging areas into GIS shapefiles.



# Hurricane Debris Staging Areas



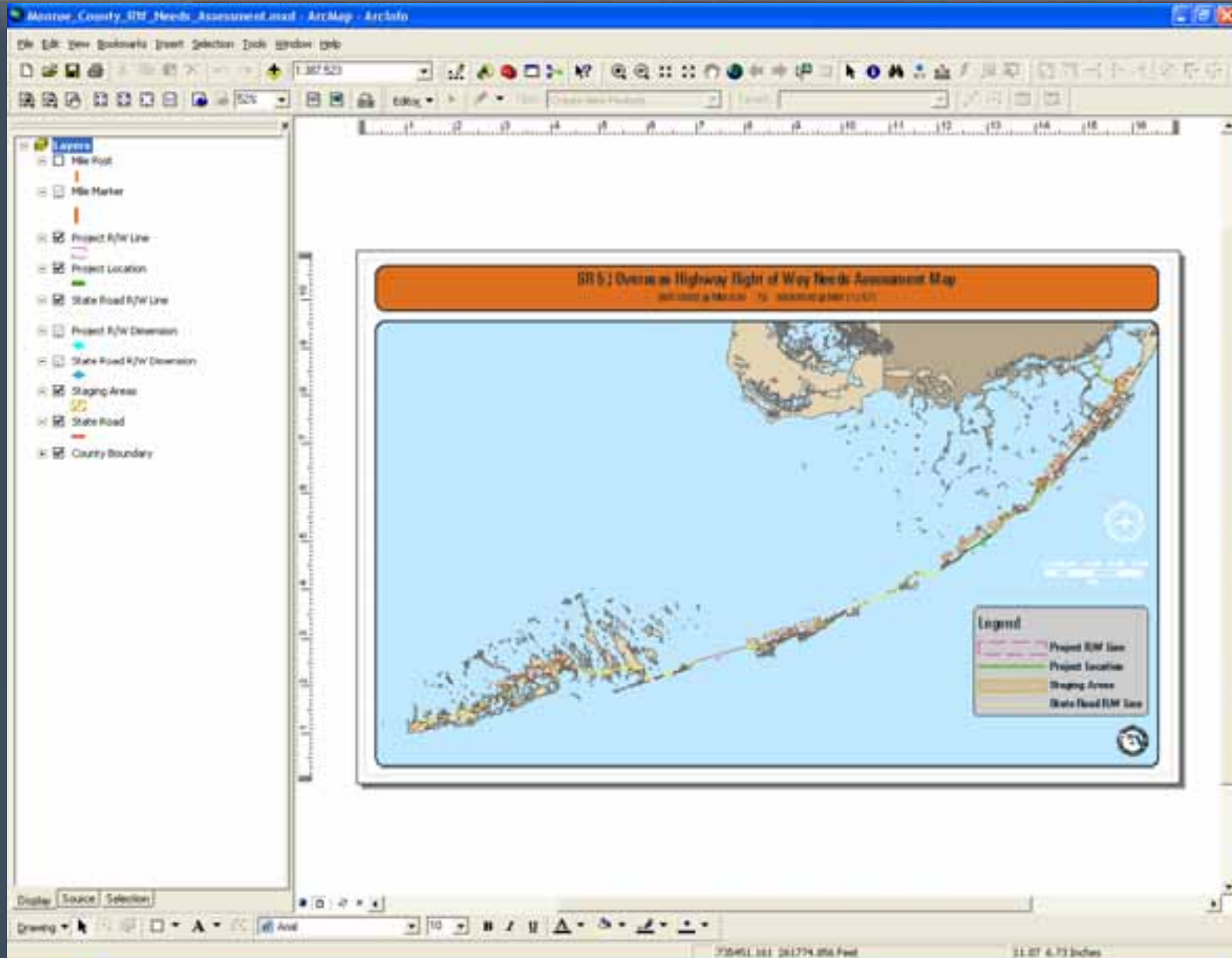
## Task 4: Create GIS Project

- Compile the existing R/W data, R/W needs data of current and future programmed projects, and hurricane debris staging areas data into a geodatabase.
- Create a GIS project to overlay the existing R/W and R/W needs layers on a GIS base map.
- Add dimensions to the existing R/W and R/W needs layers.
- Create the R/W GIS layout maps.
- Publish the R/W GIS Project to ArcGIS Server.



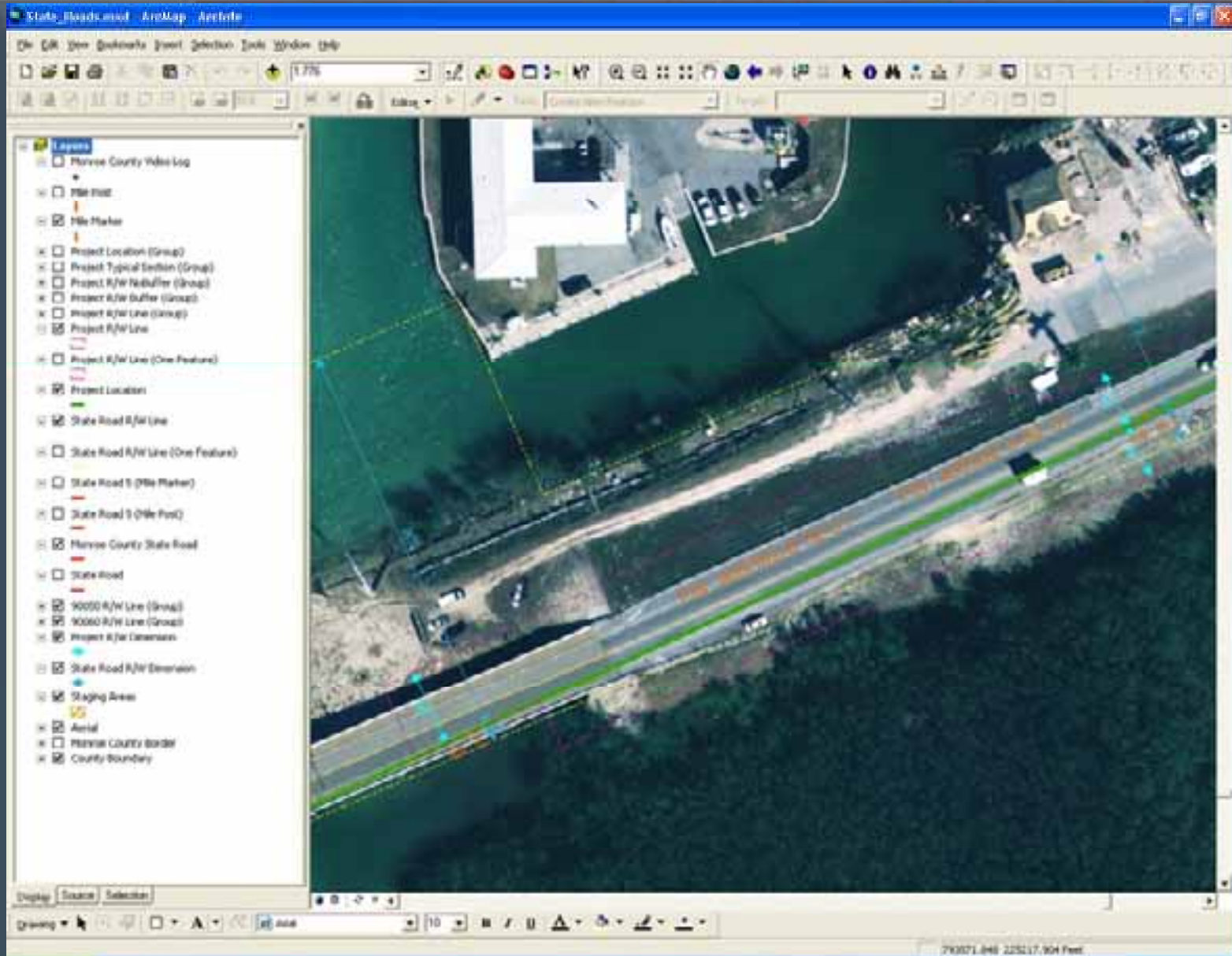


- GIS Project
  - GIS\_Data.gdb
    - + All\_Project\_Locations
    - + All\_Project\_R/W\_Lines
    - + Debris\_Staging\_Areas
    - + FDOT\_District\_6\_Boundary
    - + Monroe\_County\_Border
    - + Monroe\_County\_State\_Road
    - + Monroe\_County\_State\_Road\_5
    - + Monroe\_County\_State\_Road\_5\_Dissolved
    - + Monroe\_County\_State\_Road\_5\_MileMarker
    - + Monroe\_County\_State\_Road\_5\_MilePost
    - + Monroe\_County\_State\_Road\_5\_R/W\_Line\_Section
    - + Project\_R/W\_Dimension
    - + State\_Road\_R/W\_Dimension
  - Monroe\_County\_R/W\_Needs\_Assessment.mxd





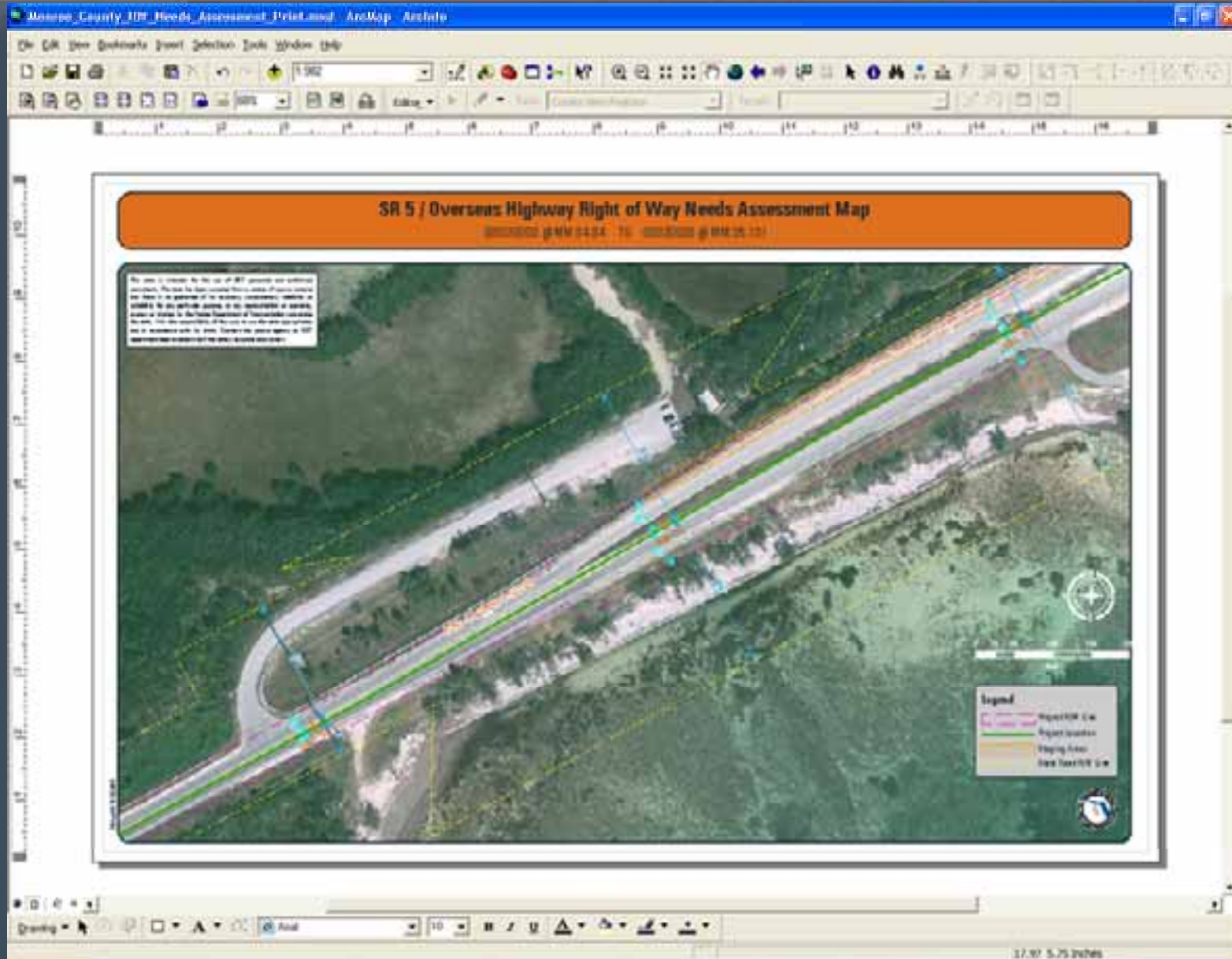
# Dimensions in R/W Map







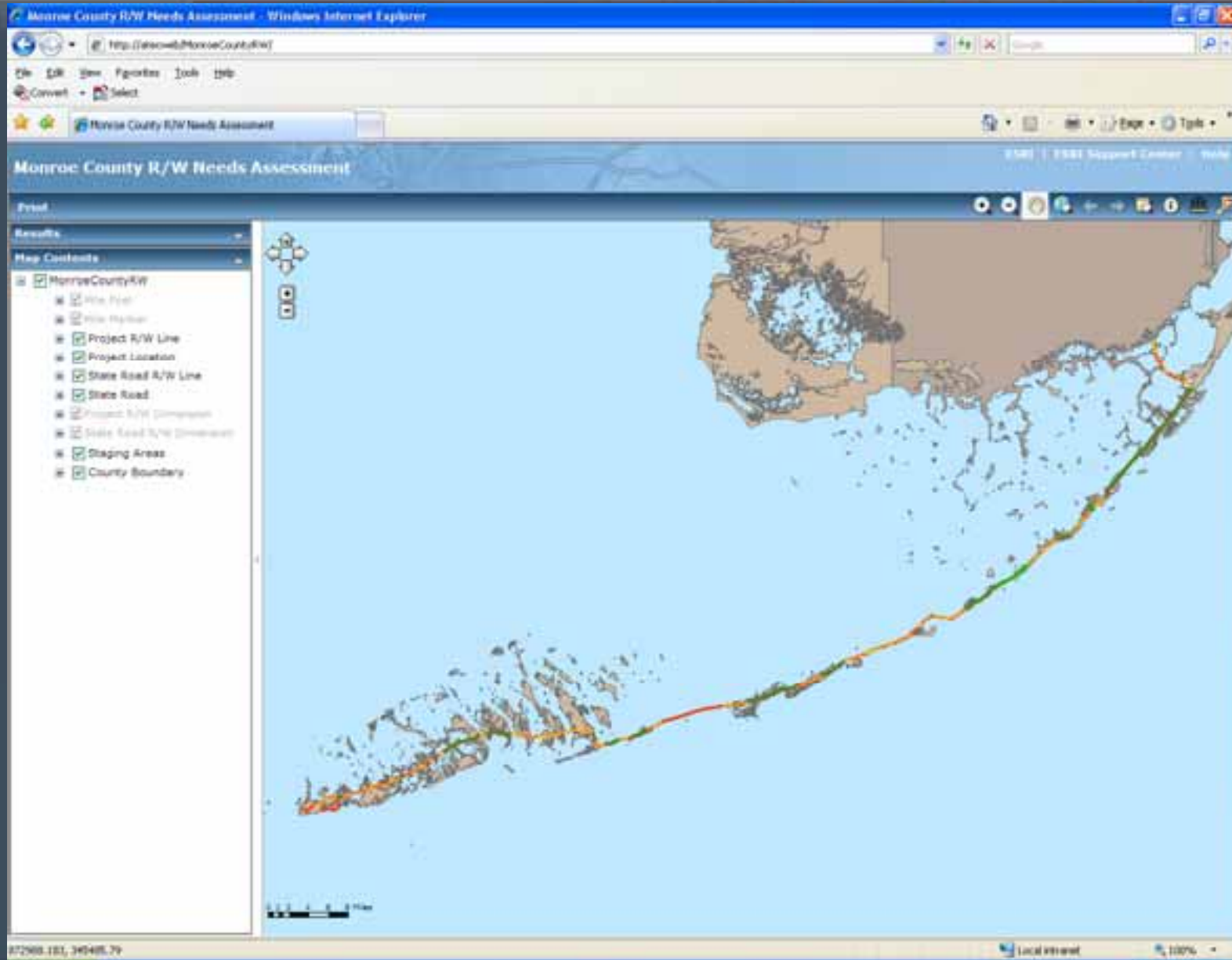
# GIS Layout Map







# R/W GIS Project Online





# Thank You

# Questions?