



Esri International User Conference | San Diego, CA
Technical Workshops | July 13, 2011

Creating Web Applications with ArcGIS

Bern Szukalski, Jeremy Bartley, and Derek Law

Agenda

- **Intelligent web maps**
- **Creating a web map**
- **Sharing web maps**
- **Building web applications**
- **Summary**

ArcGIS Online

Find, create, and share geographic information

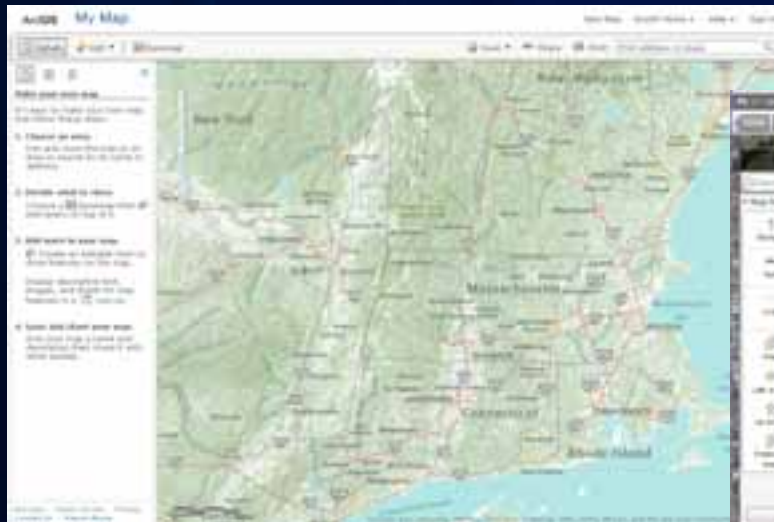
- GIS for everyone
 - **Empowering the non-GIS expert!**
- Public and Private Groups
- Hosted Web applications:
 - **ArcGIS.com Viewer**
 - **ArcGIS Explorer Online**
- Map templates



ArcGIS.com viewer and ArcGIS Explorer Online

Two viewers – similar functionality

- **ArcGIS.com viewer**
 - JavaScript Application
 - View presentations
- **ArcGIS Explorer Online**
 - Silverlight Application
 - Create and view presentations
 - Dashboard

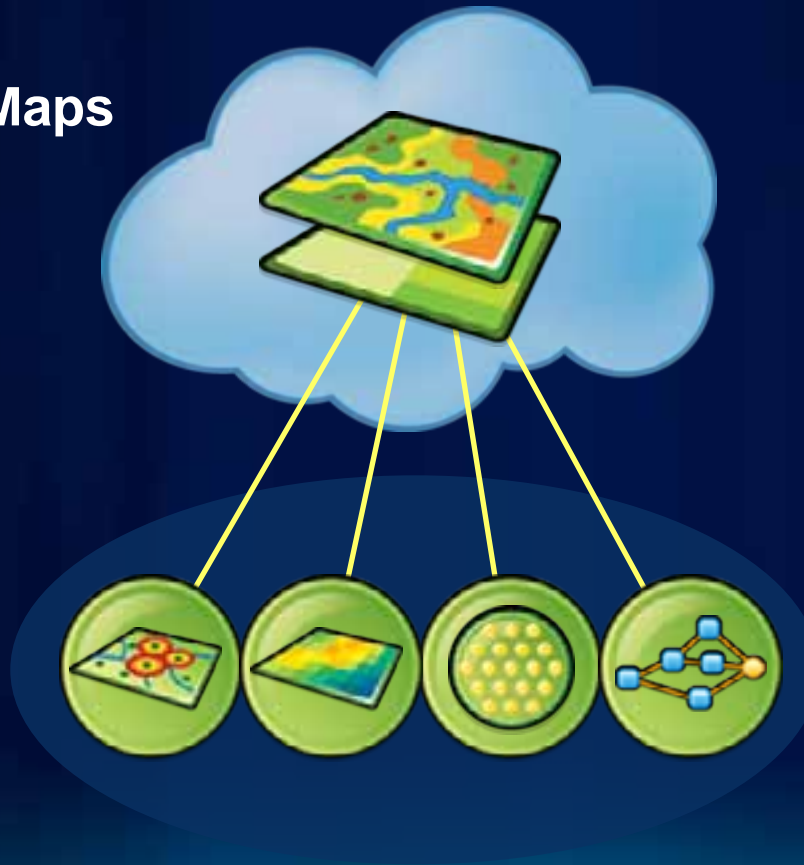


What is a web map?

The foundation for your maps and applications

Intelligent Maps

Services
And Data



Supporting

- Visualization
- Editing
- Popups
- Analysis
- Time

One web map can be used anywhere

Any Device

Smart Phones

Tablets



Desktop



Web Sites



Browsers

One Map



ArcGIS Online

Share your web map

- Link to another web site or blog
- Facebook or Twitter



One web map – many uses

ArcGIS Online templates

- Easily create a web application for a web map with predefined templates



Demo

With Bern and Jeremy



ArcGIS' *ready-to-use* Configurable Web Apps



ArcGIS Viewer for Flex



ArcGIS Viewer for Silverlight



ArcGIS for SharePoint

<http://resources.arcgis.com/content/web/web-apps>

ArcGIS Viewer for Silverlight

Built on the ArcGIS API for Silverlight

- Easily and quickly build Web applications
- Includes Application Builder
 - WYSIWYG user experience
- No programming, nor configuration file editing
- Ideal for novice Web application creators
- Extensible with Silverlight API



ArcGIS Viewer for Flex

Built on the ArcGIS API for Flex



- **Configure application via XML files**
 - Look and feel
 - Capabilities
 - Content
- **Ideal for focused/vertical applications**
- **Extensible with Flex API**



esri.com/flexviewer

Formerly 'Sample Flex Viewer', now fully supported

ArcGIS for SharePoint



Configurable Map part

- Includes several components
 - Map Web Part
 - Geocoding Workflow
 - Location Field
- Ideal for
 - Spatially enabling SharePoint data
 - Adding GIS to your business data



Demo

With Derek



Summary



- **Intelligent Web Map**
 - Foundation for your maps and apps
 - Can be leveraged in many ways
- **ArcGIS offers many ready-to-deploy solutions for creating Web applications**
 - All of them work with Web Maps
- **Online evaluations**

www.esri.com/sessionevals



esri