



**Esri International User Conference | San Diego, CA**  
**Technical Workshops |**

# **ArcGIS for SharePoint, An Introduction**

Art Haddad

Rich Zwaap

# Agenda

- **Welcome / Introductions**
- **ArcGIS for SharePoint**
- **Demo**
  - Working with the product
- **Road map**

# ArcGIS for SharePoint

- **Rich, Configurable mapping for SharePoint**
  - Create rich, interactive SharePoint sites quickly and easily
  - Familiar User Experience to both SharePoint and ArcGIS users
  - Configurable Out of the Box tools
  - Extensible



# What can you do with ArcGIS for SharePoint

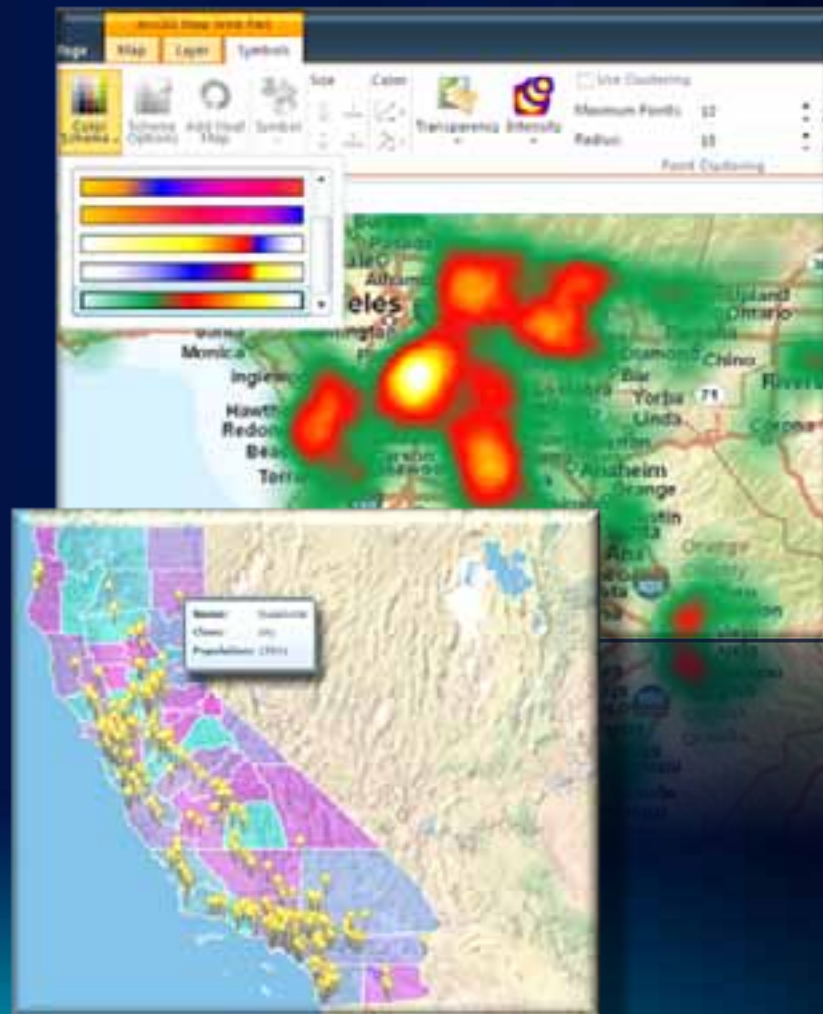
- **Visualize your data in new ways**
  - Mashup your data with ArcGIS Services
- **Spatially enable your SharePoint data**
  - Match addresses to a location on the map
- **Create Purpose-specific solutions**
  - Leverage SharePoint permissions for access
- **Perform analysis with your data**
- **Much, Much, more...**



# Visualize your data in new ways

## ArcGIS Map Web Part

- Rich display of your data using an Interactive Map
  - ArcGIS Services
    - ArcGIS.COM
    - WebMaps
  - Spatial Data Services
  - SharePoint Lists
- Interactively configure symbology



# Review: Data Content in a Map

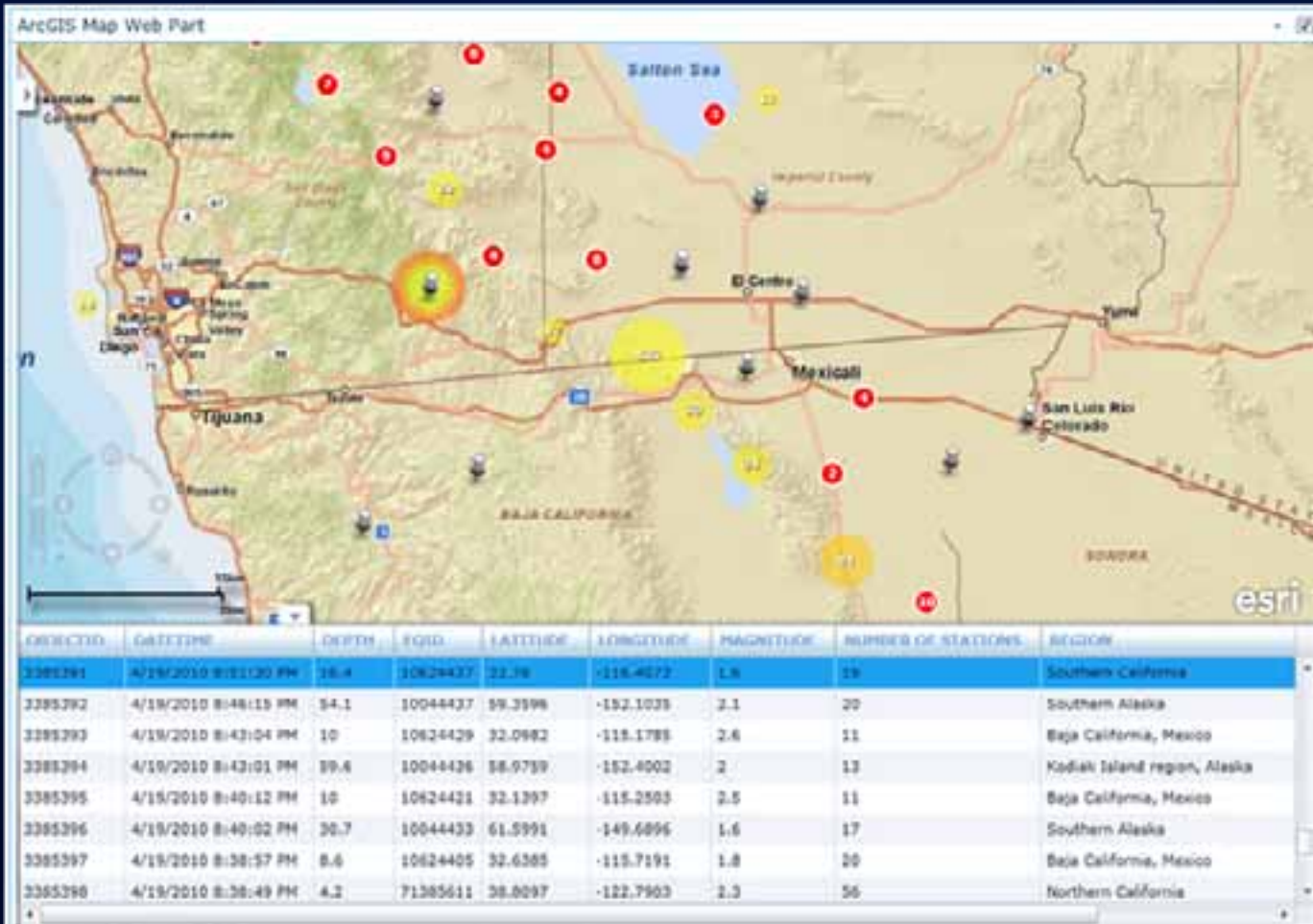
## *Common design pattern*

- **Base Maps**
  - Geographic frame of reference
  - Contain static data
- **Operational layers**
  - Information overlays that end users interact with
  - Contain dynamic data
- Operational layers display on top of Base Maps





# ArcGIS Map Web Part – View Data in Table



# Spatially enable your SharePoint Data

## Geocoding Workflow

- Find the geographic coordinates of addresses stored in SharePoint lists
- SharePoint workflow
  - provides an experience that will be familiar to many SharePoint users

The image shows two overlapping screenshots from a SharePoint interface. The background screenshot is the 'Workflow Options' page for a workflow named 'Geocoding Workflow'. The breadcrumb trail at the top is 'Locator > Address Fields > Coordinate Fields > Map Options > Workflow Options'. The page title is 'Workflow Options' with the subtitle 'Specify options for starting and managing the workflow'. There are two checked checkboxes: 'Find locations for all list items now' and 'Create tasks to review address match candidates'. Below these, the 'Assign To' field is set to 'System Account' with a green checkmark and the text 'User or group verified successfully.'. The 'Due Date' is '6/28/2016' with a calendar icon. The 'Title' is 'Review address match candidates' and the 'Description' is 'Review match candidates for {0}'. At the bottom right are 'Back', 'OK', and 'Cancel' buttons. The foreground screenshot is a 'Workflow Settings' menu. It has a 'List Permissions' button at the top. Below it, the 'Workflow Settings' section is highlighted with a red border. Inside this section, 'Add a Workflow' is highlighted with a yellow background. Below this are two options: 'Create a Workflow in SharePoint Designer' and 'Create a Reusable Workflow in SharePoint Designer'.

Locator > Address Fields > Coordinate Fields > Map Options > Workflow Options

### Workflow Options

Specify options for starting and managing the workflow

- ☒ Find locations for all list items now
- ☒ Create tasks to review address match candidates

Assign To: System Account    
*User or group verified successfully.*

Due Date: 6/28/2016

Title: Review address match candidates

Description: Review match candidates for {0}

Back OK Cancel

List Permissions

Workflow Settings

Workflow Settings:

Add a Workflow

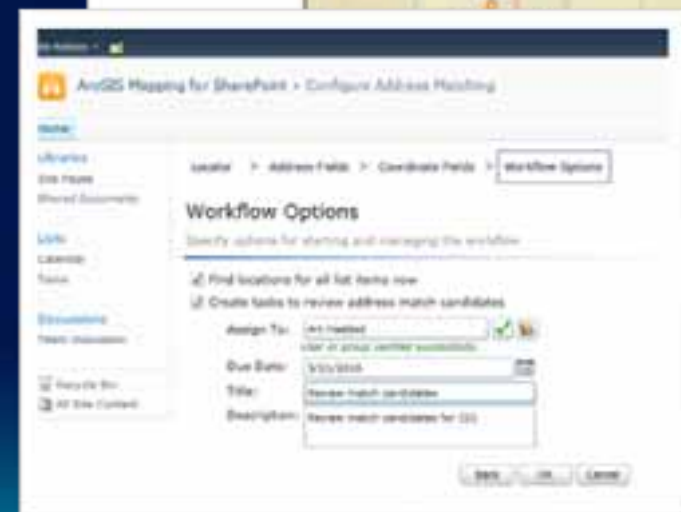
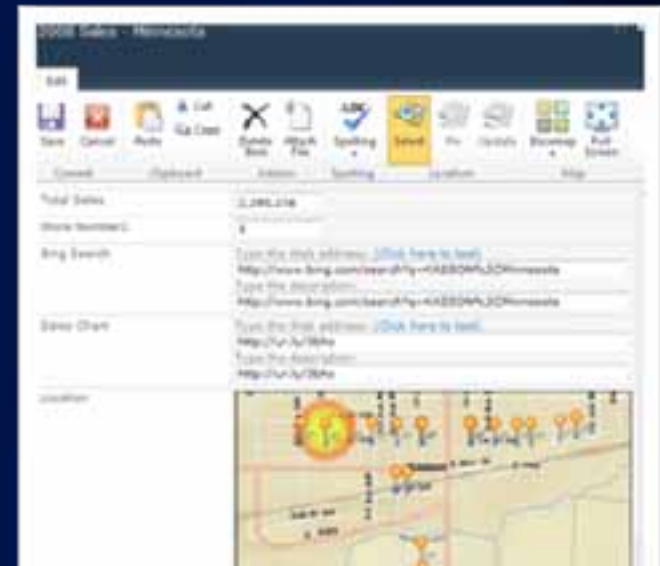
Create a Workflow in SharePoint Designer

Create a Reusable Workflow in SharePoint Designer



# Geocoding Workflow

- **Configurable Locators**
- **Automated geocoding**
  - when a list item is changed or added.
- **Interactively select the best address candidate match**
  - using the Location Field
- **Track the status of candidate selection**



# Working with maps in SharePoint



# Create Purpose-specific solutions

## WYSIWYG Design time and Configurable Ribbon

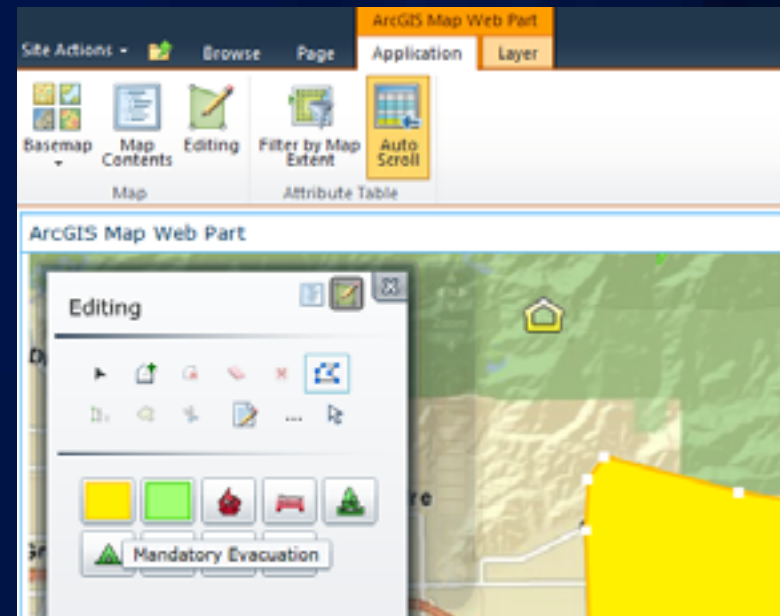
- Clean distinction between Design-time and Run-time
  - Designer, User
- Designers can now configure Items on SharePoint's Ribbon
  - Limit access to tools, map configuration, and ribbon elements
- Users are limited access to what Designers allow



# Out of the Box Tools



- Editing
- Search
- Selection
- Map Contents with Legend
  - Contents, Layer List
  - Legend modes
  - Ability to specify layers
- Configurable Controls
- More...



# Perform Analysis on your data

## Using ArcGIS Geoprocessing

- **Geoprocessing**
  - **Work with simple to advanced capabilities using ArcGIS**
    - **On-Premise using ArcGIS for Server**
    - **In the Cloud with ArcGIS.COM**

# Adding more...

## Extending ArcGIS for SharePoint

- **Add-Ins: Extensibility points**
  - Tools: Button on the ribbon
  - Behaviors: Hook to events on the Map, etc
- **Create Add-Ins using the ArcGIS API for Silverlight**
- **Share Add-Ins with Silverlight Viewer**
- **Samples on the Interactive SDK**
  - More to come.














# Administration

SharePoint on Suchness • Site Settings

SharePoint on Suchness

<b>Libraries</b> Site Pages Shared Documents Drop Off Library WebPart	 <b>Users and Permissions</b> People and groups Site permissions Site collection administrators	 <b>Look and Feel</b> Welcome Page Title, description, and icon Master page Page layouts and site templates Tree view Site theme Navigation
<b>Lists</b> Calendar Tasks My List My Contacts	 <b>Galleries</b> Site columns Site content types Web parts List templates Master pages and page layouts Themes Solutions	 <b>Site Actions</b> Manage site features Reset to site definition Delete this site Site Web Analytics reports Site Collection Web Analytics reports
<b>Discussions</b> Team Discussion	 <b>Site Administration</b> Regional settings Site libraries and lists User alerts RSS Search and offline availability Sites and workspaces Workflows Workflow settings Related Links scope settings Content Organizer Settings Content Organizer Rules Site output cache Term store management Searchable columns Content and structure Content and structure logs	 <b>ArcGIS for SharePoint Administration</b> Basemaps Connections Geometry Service Locators Symbols Extensions
 Recycle Bin  All Site Content		 <b>Hold and eDiscovery</b> Hold Reports Holds Discover and hold content

# Working with ArcGIS for SharePoint

Rich Zwaap



# Road Map

- **V2.0 available now**
  - Resource Center download
- **V2.1 Beta 1 available now**
- **V2.1 Beta 2 – August, 2011**
- **Final Release: ~October 2011**

# Road Map - What's New in Beta 2

- **Layer Enhancements**
  - On-Demand Feature Retrieval
  - Auto-Update of dynamic map service layers and feature layers
- **Browse Enhancements:**
  - Ability to specify the URL to a layer/GP task directly
  - Accelerated performance
- **Web Map 1.2 Support: Symbols, popups**
- **Configurable Map Contents with Legend Capability**
  - Contents, Layer List, Legend modes
  - Ability to specify layers

## Road Map - What's New in Beta 2

- **Pop-Ups with Identify Capabilities**
- **Editing**
- **Configurable Controls**
- **Attribute Table: Show selected/not selected/all options**
- **Simplified User Experience for Add Tool, Add Geoprocessing, Manage Toolbars**
- **Adding layers with Secured Services**
- **Extensibility install for easy Add-In development**

# Road Map – v2.1 Final

- **SharePoint Online Support**
- **Custom Layers**
- **New Tools**
  - **Bookmark, Time slider, Measure**
- **Performance, Quality and User Experience improvements**



# Questions

**Please fill out your surveys**





esri