





Esri International User Conference | San Diego, CA
Technical Workshops | July 14, 2011

Georeferencing CAD Datasets

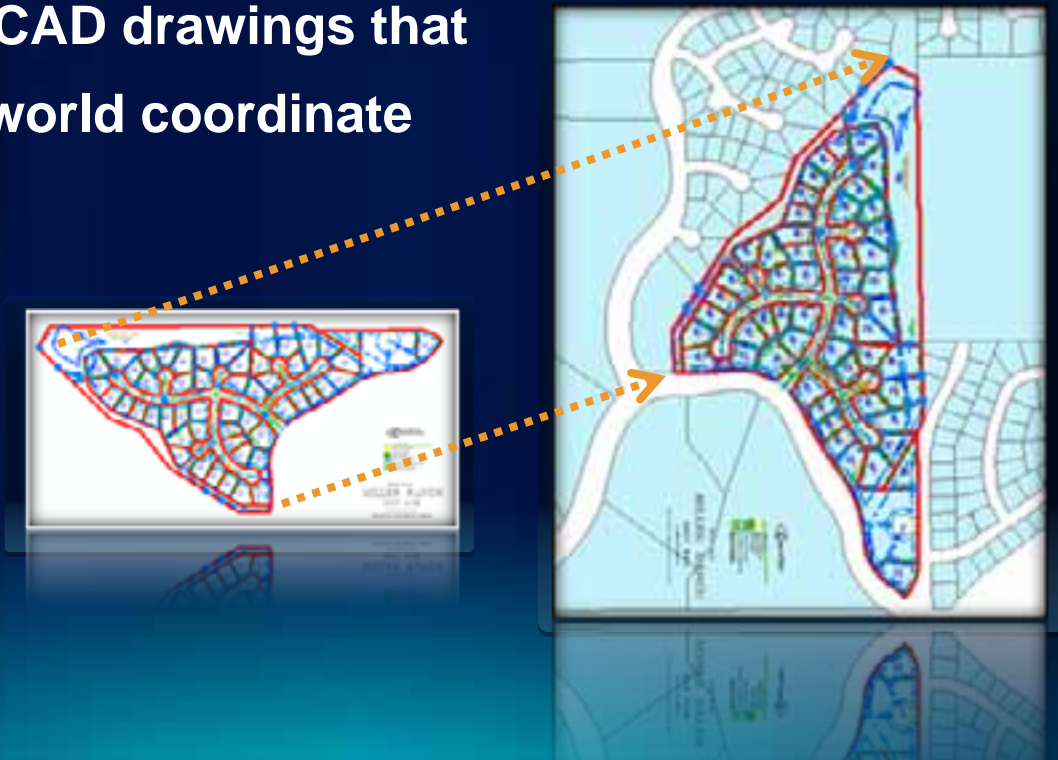
Phil Sanchez

Agenda

- Overview of Georeferencing CAD Datasets
- Assigning coordinate systems to CAD Datasets
- Demo: Repositioning CAD Datasets
- Summary

Georeferencing

- **Reposition CAD datasets to align with GIS layers**
 - Move, Rotate, & Scale
- **Assign coordinate system for map reprojection**
- **NOT required for CAD drawings that are drawn in real-world coordinate location**

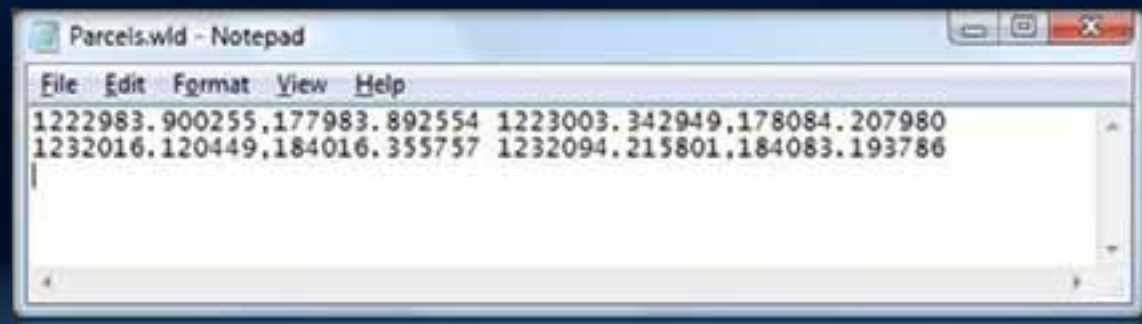


Georeferencing Method

- **Two-point Similarity transformation method**
 - Move, Rotate, and Scale
 - Aspect ratio always maintained
 - Cannot skew or 'rubber sheet' CAD drawing
- **Transformation managed by World Files**
 - ArcGIS is not modifying the CAD drawing
 - World file use CAD file name prefix
 - Must also reside in same folder

Georeferencing: World Files

- File based, two point transformation for CAD data
- Uses the .wld file extension
- Simple text file containing two lines with two pairs of coordinate values:
 <From X1, From Y1> <To X1, To Y1>
 <From X2, From Y2> <To X2, To Y2>



Georeferencing Toolbar

- Georeferencing toolbar – use mouse pointer to move layer and create control points in map
 - Rotate, Scale, and Shift tools



Assigning Coordinate Systems to CAD Datasets

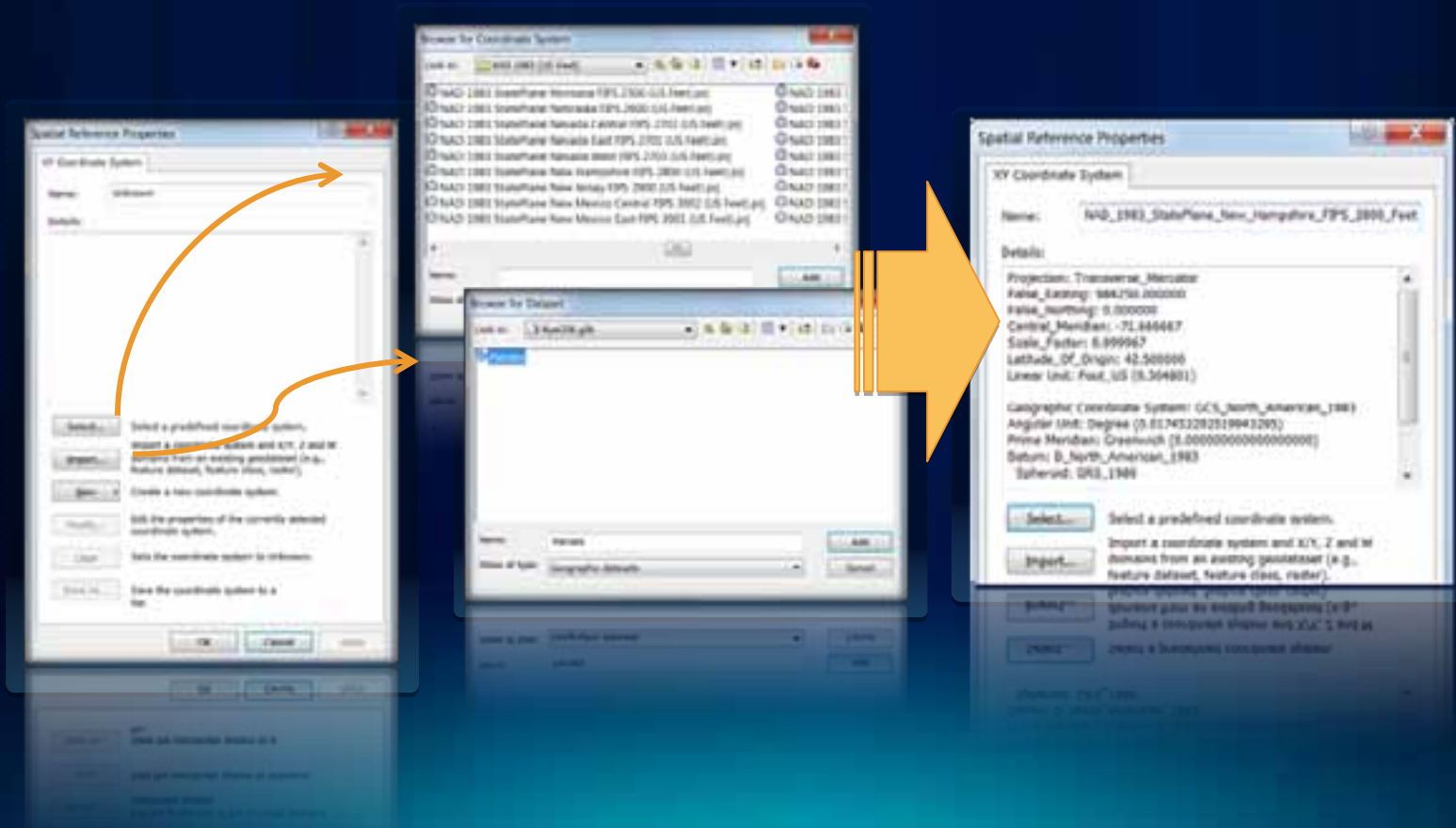


Coordinate Systems - Overview

- **CAD Datasets with defined Coordinate Systems reproject on-the-fly to align with other map layers**
- **Enables CAD Dataset to be used for spatial overlays and mapping**

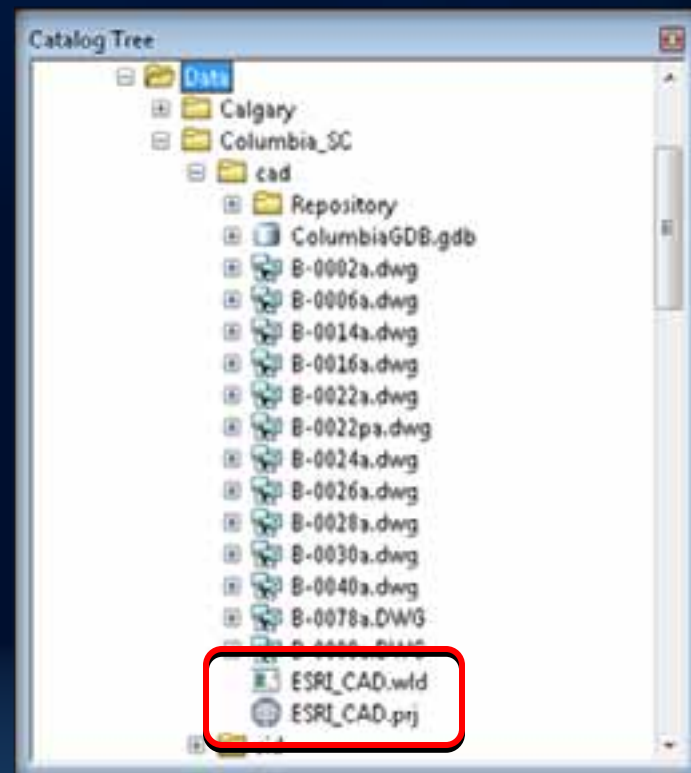
Assigning Coordinate Systems

- Defined at the CAD Dataset level
- Catalog window's Spatial Reference Properties dialog



Universal Projection and World Files

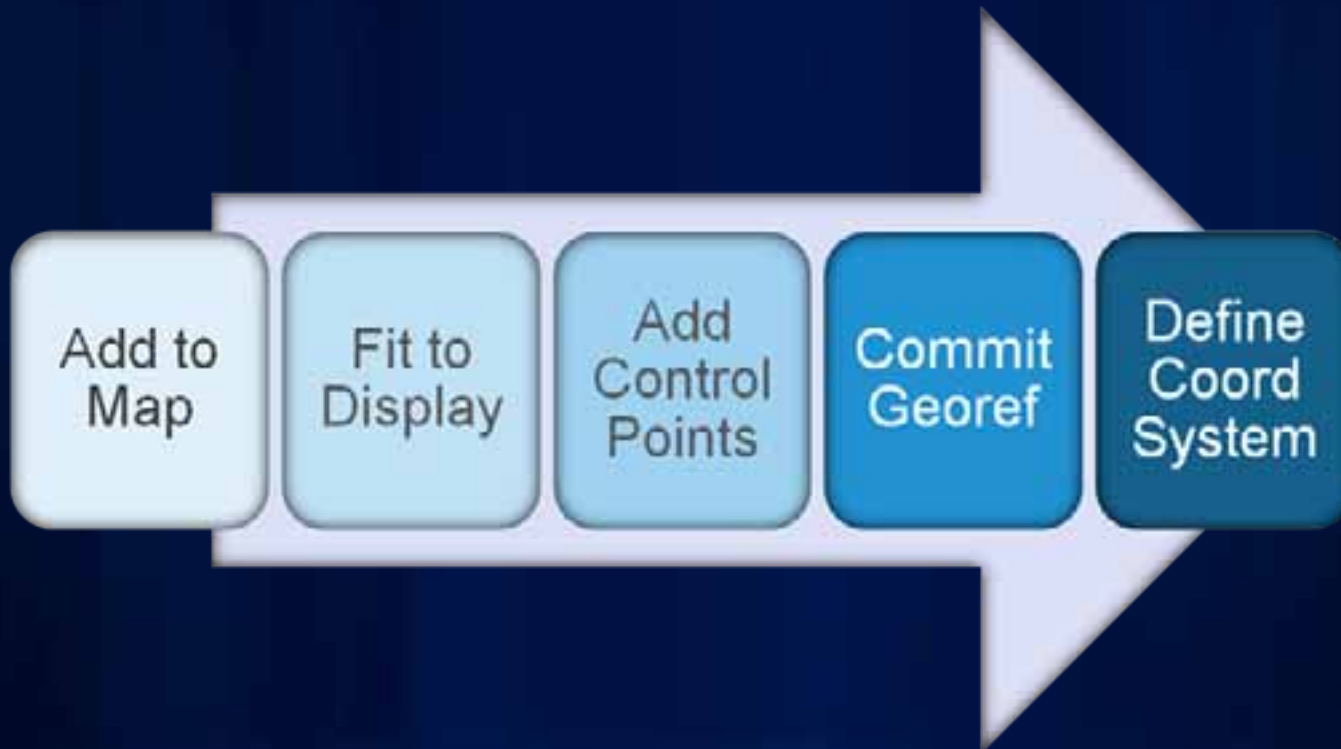
- **Universal Projection File**
 - ESRI_CAD.PRJ
 - Applies same coordinate system to all CAD files in a workspace
- **Universal World File**
 - ESRI_CAD.WLD
 - Applies identical transformation to all CAD files in a workspace
 - Useful for set of tiled CAD drawings



Demo: Georeferencing CAD Datasets



Georeferencing Process



Resources

- **CAD Integration Resource Center**
 - <http://resources.arcgis.com/content/cadintegration/10.0/about>
 - 'Georeferencing CAD Data' Help Topics
- **Working with CAD Data - Instructor Led Course**
 - http://training.esri.com/gateway/index.cfm?fa=catalog.courseDetail&CourseID=50120390_9.x
- **Working with CAD in ArcGIS – Live Training Seminar**
 - <http://training.esri.com/acb2000/showdetl.cfm?DID=6&ProductID=887>
- **Lining Up Data in ArcGIS: A Guide to Map Projections (ESRI Press)**
 - http://www.esri.com/news/releases/10_2qtr/lining-up-data.html

Closing

- Questions
- Please fill out the online evaluation forms at:
 - www.esri.com/sessionevals
- Thank you for attending!

