



Esri International User Conference | San Diego, CA
Technical Workshops |

Automating Geodatabase Administration with Python

Russell Brennan

Python and Geodatabases

- **Python**
 - Is the programming language for geoprocessing.
 - ArcPy site package is used to access geoprocessing functionality.
- **Geodatabase**
 - **Core ArcGIS Data model**
 - A comprehensive model for representing and managing GIS data
 - A physical store of geographic data.
 - A transactional model for managing GIS workflows.

Things you need to know

- **Familiar with using Python for geoprocessing**
 - Arcpy, Python lists, looping, string manipulation, data types.
- **Familiar with Enterprise geodatabase concepts**
 - Versions, replicas, connection files, data ownership.

Agenda

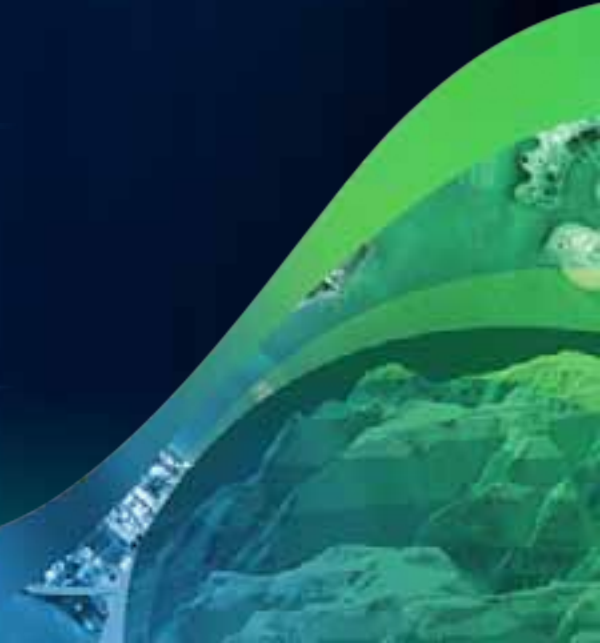
- **Demo 1**
 - **Geodatabase maintenance.**
 - **Reconcile/post/delete versions, synchronize replicas, error reporting and automatic notifications**
- **Demo 2**
 - **Scheduling your scripts to run (Windows)**
- **Brief discussion of new admin 10.1 features**

Version Maintenance

- **Synchronize replicas**
- **Reconcile versions**
- **Post versions**
 - **Delete versions – this will depend on your organization's workflow and version structure.**
- **Compress database**
- **Email notifications**

DEMO

Rec, Post, Compress



Scheduling your script to run

- Using Windows task scheduler you can automate when your script will be run.
- This is especially useful for tasks that need to be run on a regular basis.



DEMO

Scheduling

What's new at 10.1

- **Tools:**
 - Analyze Datasets
 - Rebuild Indexes
 - Reconcile Versions
- **Python functions:**
 - ListVersions
 - ListReplicas
 - ListUsers (lists connected users)
 - DisconnectUsers
 - Describe will return the current release of a geodatabase

This script is available online:

- Should be page 5 or 6 of the Geoprocessing tool gallery.
- URL
 - <http://resources.arcgis.com/gallery/file/geoprocessing/details?entryID=A709782C-1422-2418-7FD5-E83695D0381E>

Related Sessions

- **Road Ahead – GDB Admin**
 - **Thursday 3:40 Room 27B**

Esri Training for Desktop Developers

<http://www.esri.com/training>



- **Instructor-Led Courses**

- [Introduction to Geoprocessing Scripts Using Python](#)
- [Programming ArcGIS Desktop Using Add-Ins](#)

- **Web Course**

- [Using Python in ArcGIS Desktop 10](#)

Questions?

www.esri.com/sessionevals





esri