



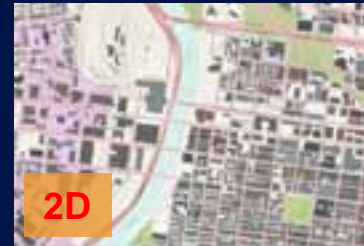
Esri International User Conference | San Diego, CA
Technical Workshops | Facilities Management Track

3D GIS for Facilities

Craig Cleveland – Solutions Engineer
Eric Wittner – Product Engineer

3D GIS

- **Viewing** geospatial data in 3D leads to new insights
- Sometimes you need to **edit** your data in 3D
- Some problems can only be **solved** in 3D



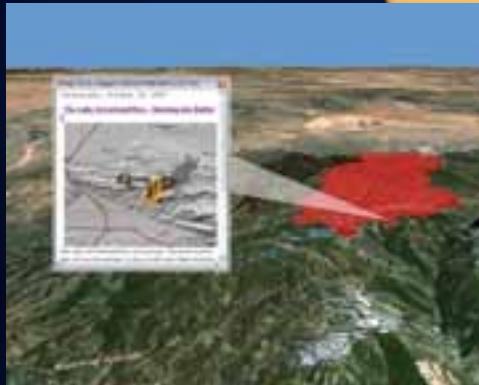
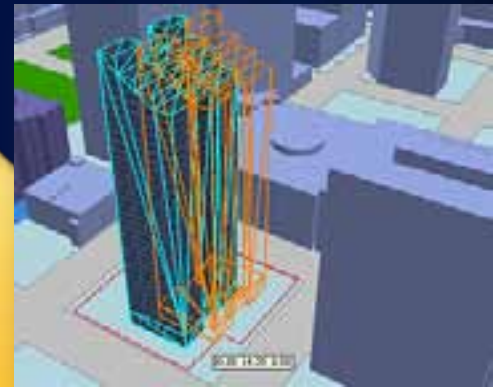
It is powerful to share and present your data in 3D

ArcGIS *Provides a complete system for 3D GIS*



Visualize

Manage



Share

Analyze



Your GIS information in 3D

Visualize *Facilities*



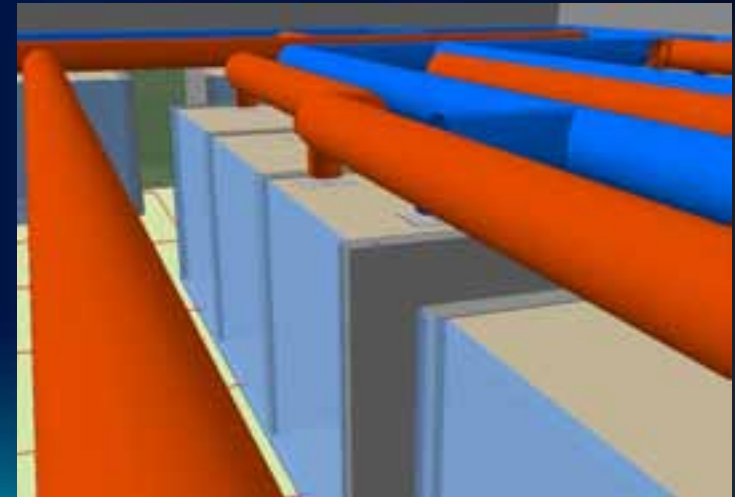
Campus



3D transportation network

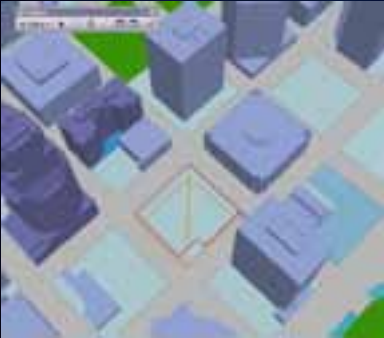


Spaces within a building



Interior assets

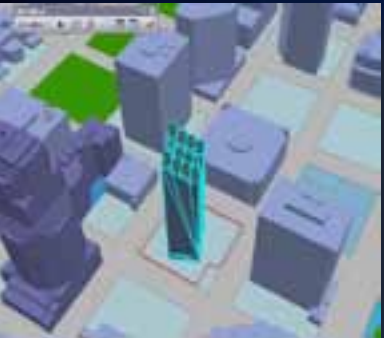
Manage *Facility Information*



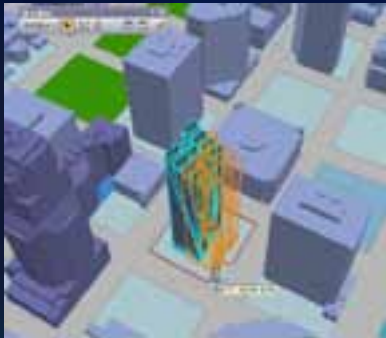
Create 3D city elements 



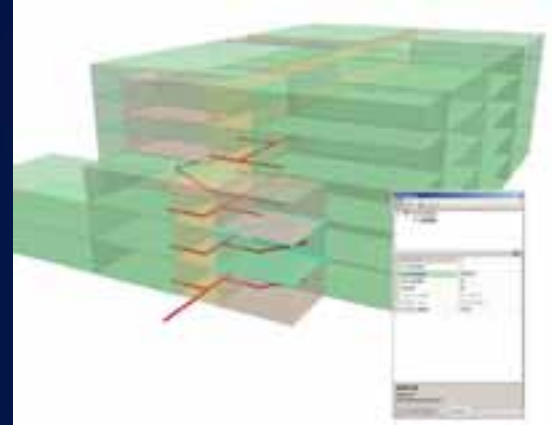
Import / replace buildings



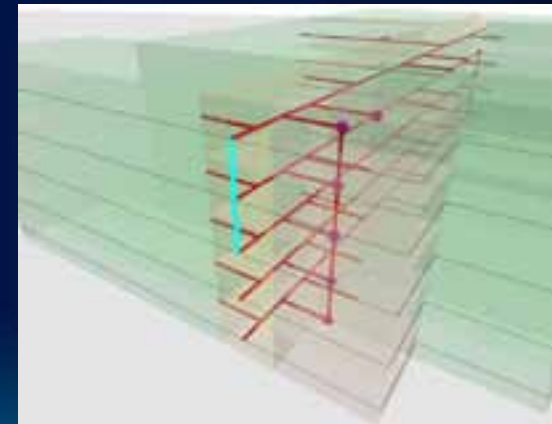
Scale



Move, rotate



Update room attributes in 3D



Edit, store vertical elements

Analyze *Facilities*



Visibility



Viewshed / Skyline



Security camera coverage



Blast impact

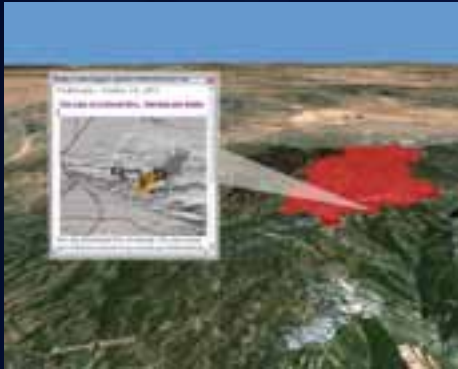


Volumetric Shadows



Interior transportation
networks

Sharing *Facilities* Information



Interactive 3D Maps



Video Animations

Share

Maps and Screenshots



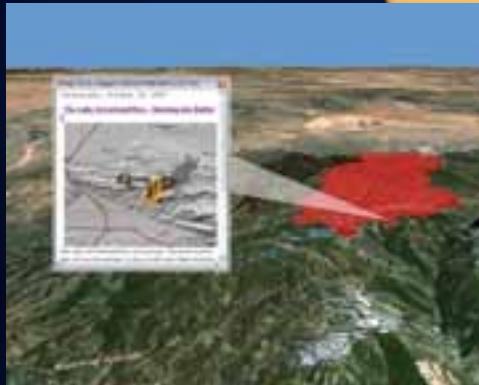
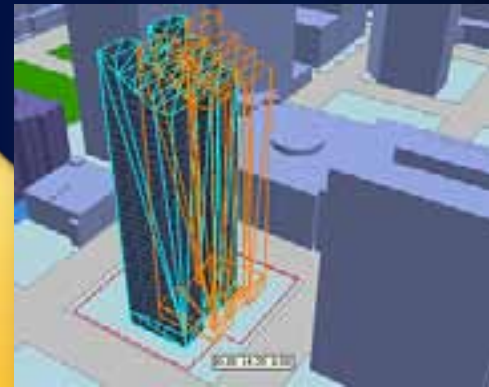
Communicating GIS using 3D

ArcGIS *Provides a complete system for 3D GIS*



Visualize

Manage



Share

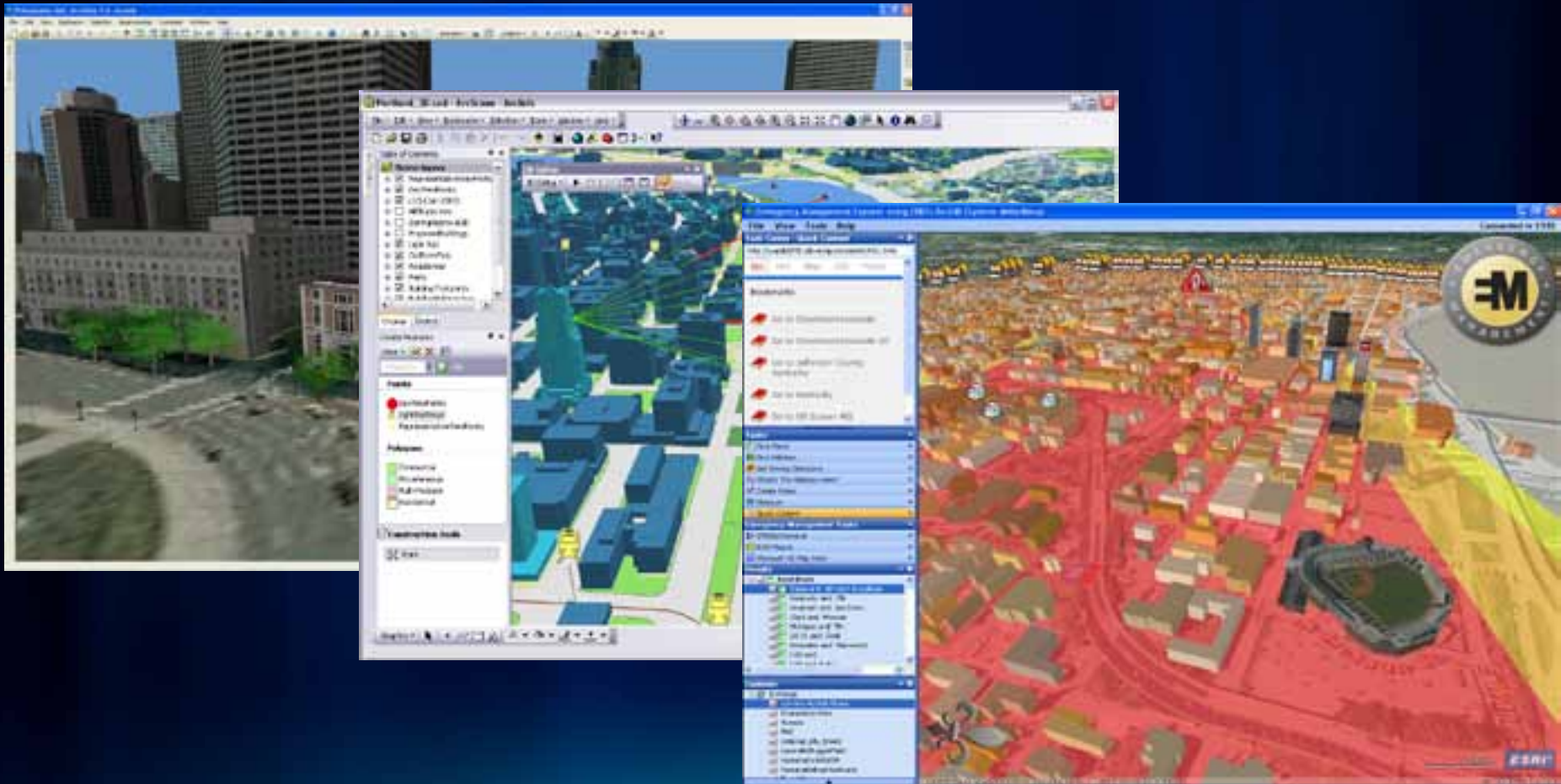
Analyze



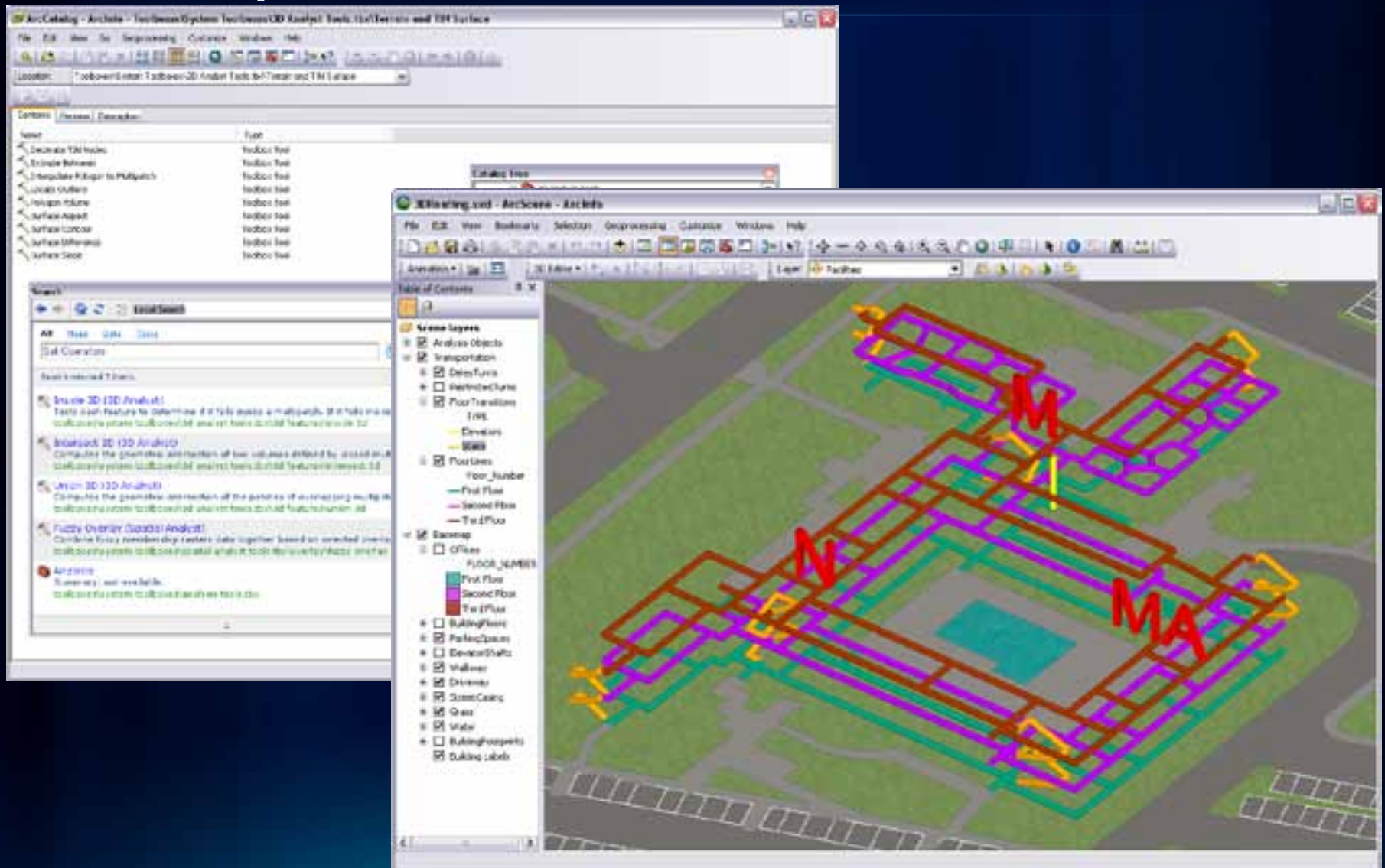
Your GIS information in 3D

Four applications

ArcGlobe, ArcScene, Explorer, Server



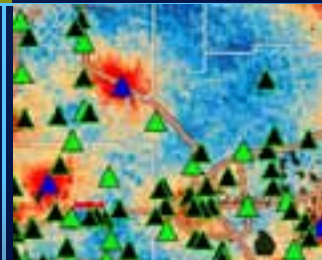
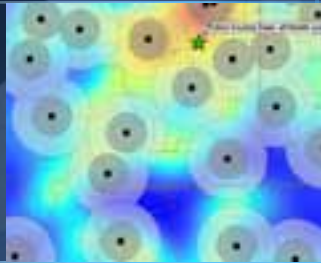
3D capabilities in ArcGIS, and various



DeKalb County Board of Health
Fulton County Dept. of Health and Wellness/District 3, Unit 2, Office

3D GIS in action - Demos

Visualization, analysis, and data management



Fulton County Dept. of Health and Wellness/District 3, Unit 2, 04

DeKalb County Board of Health

Questions?

ccleveland@esri.com

ewittner@esri.com





esri