



Esri International User Conference | San Diego, CA
Technical Workshops | July 12, 2011

Working with ArcGIS Online

Bern Szukalski, Deane Kensok

Topics for this Session

- **ArcGIS Online Overview**
- **ArcGIS Online Content**
 - **Demo: Tour of Online Content**
- **Using ArcGIS Online**
 - **Demo: Tour of ArcGIS Online (ArcGIS.com)**
- **Road Ahead**
 - **Enhanced Maps & Tools**
 - **ArcGIS Online for Organizations**
 - **Demo: Online Account & Hosted Services**
- **Q & A**

ArcGIS Online Overview

Bern Szukalski



ArcGIS is a Complete System

A Complete and Integrated Geographic Information System



ArcGIS Is An Online System

A Complete and Integrated Geographic Information System



ArcGIS Online Is Built-in To ArcGIS

An integrated part of the user experience

- Basemap galleries
- Searching and sharing
- Built-in tools and capabilities
 - Geocoding, gazetteer, etc...



ArcGIS Online

Open data platform for maps and geographic information

- Easily create and share maps
- Delivered as intelligent maps
- Access on virtually any device – anyone, anywhere
- Compliments and extends the value of your GIS
- Use within an organization or share with larger communities and the public

GIS for Everyone
Easy / Open / Accessible



**Intelligent
Web Maps**

Extend the value and reach of your GIS

ArcGIS Online Content

Deane Kensok



ArcGIS Online Maps



ArcGIS Online includes an Ecosystem of Resources

ArcGIS Online Maps Summary

- **Imagery**
 - World Imagery
 - Bing Maps Aerial
- **Streets**
 - World Street Map
 - Bing Maps Roads
- **Topographic**
 - World Topographic Map
 - USA Topo Maps
- **Thematic**
 - Demographic maps
 - Sciences maps



*From Esri and the
ArcGIS Community*

World Imagery

Imagery mosaic built from best available commercial and public sources

- **USA Imagery Mosaic of 1m or Better Imagery**
 - **USDA NAIP, USGS Cities, and Commercial Imagery**
 - **Imagery from User Community (States, Counties, Cities)**
- **International Areas at 1m or Better Imagery**
 - **GeoEye IKONOS Imagery for Major Metro Areas**
 - **Contributed Imagery for Several Other Countries**
 - **Portugal, Great Britain, Belgium, Netherlands, France, ...**



World Street Map

Street map built from commercial street data and other local sources

- World Street Map down to ~1:150k Scale
- Detailed Street Map to ~1:10k for Many Regions
 - Updated Coverage for North America and Europe
 - **New Coverage for South America and Australia!**
 - Contributed Street Maps for Several Other Countries



World Topographic Map

Topographic style basemap built from best available data sources

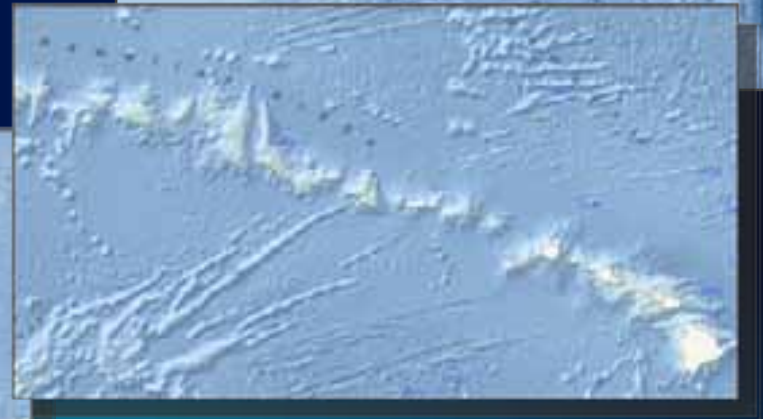
- **Same Coverage as World Street Map PLUS**
 - Worldwide Map down to ~1:150k
 - N. America & Europe down to ~1:10k
 - S. America and Australia down to ~1:10k
- **Great Momentum with Community Participation**
 - 4x more maps published since last year
 - 250+ more community maps in production
 - Hundreds of active participants
- **Ongoing Monthly Updates with New Coverage & Detail**



Ocean Basemap

Basemap for Ocean GIS

- Bathymetry, surface & subsurface names, depth values
- Initial Release down to 1:1m worldwide
- Plans Forward
 - Expand as New Community Map
 - National & local contributors
 - U.S. Waters, downs to 1:36k
 - Operational Overlays
 - Task Services
 - Elevation



New Imagery Services

- **From serving tiles to serving information to users**
 - Not only a nice looking basemap
 - Introduction of dynamic and analytical services
- **New Global Land Survey Landsat Services**
 - Multiple maps presenting different views of earth
 - Help to illustrate and understand global change over time
- **Serving Near Real-Time Imagery for Major Events**
 - Japan Tsunami, Southern Storms, ...



Thematic Maps

Variety of demographic and sciences maps focused on specific themes

- **USA Demographic Maps**
 - Maps for 20 Essential Variables of Latest Esri Data

Population	People	Economics
Population Density	Median Age	Household Income
Daytime Population	Diversity	Home Value
1990-2000 Change	Household Size	Unemployment
2000-2010 Change	Social Vulnerability	Labor Force Participation
2010-2015 Change	Tapestry	Retail Spending



- **USA National Maps**
 - Nationwide maps featuring data from Federal sources
- **Global Maps**

DeKalb County Board
Fulton County Dept. of Health and Wellness/District 3, Unit 2, 04/10/2010

ArcGIS Online Maps

Review of Current Maps
Recent Updates



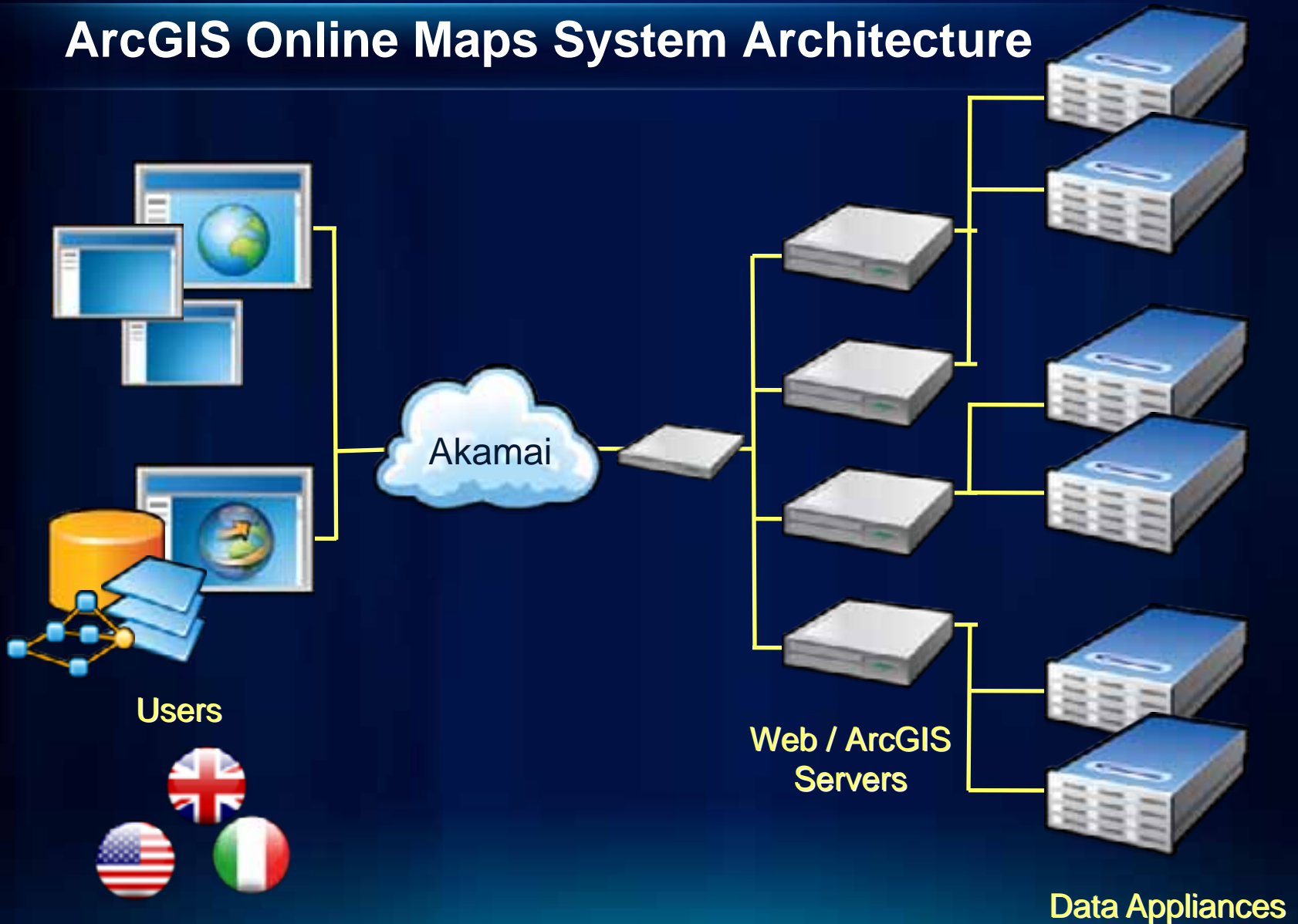
ArcGIS Data Appliance

ArcGIS Online Maps “in a box” for deployment on private network

- Ready-to-use maps for publishing with ArcGIS Server



ArcGIS Online Maps System Architecture



Community Maps Program

www.esri.com/communitymaps

- Method to Improve Community Maps that Esri Hosts and Provides Freely to our ArcGIS Users

World Topo Map



Canada

World Imagery



Portugal

World Street Map



Hong Kong

- **Goal:** Add Coverage and Detail to our Online Maps using Rich, Local Data Sources

ArcGIS Online Task Services (Tools)

Functional capabilities available online

- **Geocoding Services**
 - Multi-national geocoding for North America & Europe
 - Supports both Interactive and Batch Geocoding
 - **New ArcGIS 10 Locators support Single-Line Geocoding**
 - World Places Locator
- **Routing Services**
 - Multi-national routing for North America & Europe
 - Supports multi-point routing, optimized routes, barriers
- **Geometry Service**
 - Project coordinates, buffer features, calculate size, ...

Using ArcGIS Online

Bern Szukalski



Using ArcGIS Online You Can ...

- **Publish and manage maps and geographic information**
- **Upload and style your data**
- **Create web maps for apps, web sites, mobile**
- **Share information with defined groups**
- **Leverage Ready-to-use**
 - **Maps**
 - **Apps**
 - **Tools**



ArcGIS Online – Available to Everyone

Enabling everyone to make, share, use, and organize geographic information

- **Anonymous**
 - Discover and use maps and apps
- **With Free Account**
 - Upload and store data
 - Create web maps (mashups)
 - Participate in groups, share items, embed maps in web applications
- **New capabilities**
 - Add CSV, WMS, KML, GPX
 - Style data and save in web maps
 - Create Groups of Favorite Items



Interact with Intelligent Maps Anywhere

Any Device



Using ArcGIS Online

Bern Szukalski



Road Ahead

What's Next for ArcGIS Online



More and Better Basemaps

- **Ongoing effort to enhance basemaps for ArcGIS Online**
- **Organized in three categories:**



Reference maps

- Stand-alone or with point, line overlays



Background maps

- Attractive, neutral foundation for overlays



Top maps

- Labels, lines etc. to put overlays in context

National Geographic World Map (Coming Soon)

Distinctive and Detailed Reference Map of the World

- Useful and Authoritative Reference Map to Support Education, Conservation, and General Map Narratives



Expanded World Imagery

Expanding with high-res imagery from commercial and public sources



Adding 50+ million sq. km. of imagery by early next year

Global Geocoding Services

Expanding coverage of geocoding services globally

- **Building ArcGIS 10 Locators for Dozens of Countries**
- **Expansion Completed in Phases**
 - Now Available for U.S. and Canada
 - Expanding in North America, Europe, South America, and Australia / NZ
- **To be Provided through Global Geocoding Service**
 - REST service supporting single-line geocoding



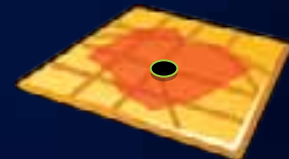
New Routing Services

Intelligent Network Analysis Services for Optimized Routes and More

- **Expansion of Existing Routing Services**
 - New routing services for South America and Australia
- **Introduce New Drive Time Service**
 - High-performance Network Analyst service using 10.1
 - Available by subscription for use in maps and apps
 - Coverage for North America, Europe, South America, Australia initially
 - Coming as part of 10.1 Release



Routing



Drive Time

ArcGIS Online for Organizations

Additional tools and capabilities that allow organizations to collaborate

- **Organizational look-and-feel**
 - Branding
 - Galleries
- **Hosting for your Maps and Data**
 - No need for your own servers
- **Management**
 - Users/roles
 - Content, groups, galleries
 - Sharing (public/private)
- **Usage Reporting**



Hosted Map Services

- **Publish from ArcMap 10.1**
 - Create feature and/or tile services
 - Define the tiling scheme and other parameters
 - Tiles are generated in the cloud
- **Publish feature services from web clients**
 - ArcGIS.com
 - ArcGIS Explorer Online
 - Feature services from
 - CSV's, GPX's
 - Shapefiles



ArcGIS Online for Organizations

Bern Szukalski and Deane Kensok



ArcGIS Portal

On-premises platform for mapping and geographic information

- **Solution for**
 - Organizations with additional security demands
 - Organizations who are prohibited from leveraging the public cloud
- **Allows for**
 - Integration with authentication system
 - Extensive customization
- **Requires**
 - Installation, maintenance
 - Infrastructure



Summary: How Can You Use ArcGIS Online?

A free account – available today

Subscriptions with hosting – **Coming Soon!**

On-premises – Portal for ArcGIS



Additional Resources

Learn more while you are at the UC

- **Related Tech Workshops**
 - Road Ahead – ArcGIS Online
 - Tue @ 3:15pm in 10
 - Introduction to ArcGIS Portal
 - Wed @ 10:15am in 15 B
 - Introducing Online Community Maps
 - Thu @ 1:30pm in 24 C
- Visit us at **Online GIS** and **Content** Islands
 - Talk with Community Maps Team at Content Island



esri