



Esri International User Conference | San Diego, CA
Technical Workshops | July 12, 2011

Introduction to Portal for ArcGIS

Paul Ross

Witt Mathot

ArcGIS Online

Open data platform for maps and geographic information

- Easily create and share maps with anyone and anywhere
- Delivered as intelligent maps
- Access on virtually any device
- Compliments and extends the value of your GIS
- Use within an organization to share with larger communities and the public

GIS for Everyone
Easy / Open / Accessible



**Intelligent
Web Maps**

Extend the value and reach of your GIS

ArcGIS Online Continues to Rapidly Evolve

Basemaps

**Catalogue and
Group Based
Sharing**

**Viewers and
Webmaps**

**Open Data and
Application Mapping**

**Hosting and Portals
for Organizations**

**Integration
with 10.1**

How Can You Use ArcGIS Online?

A free account – available today

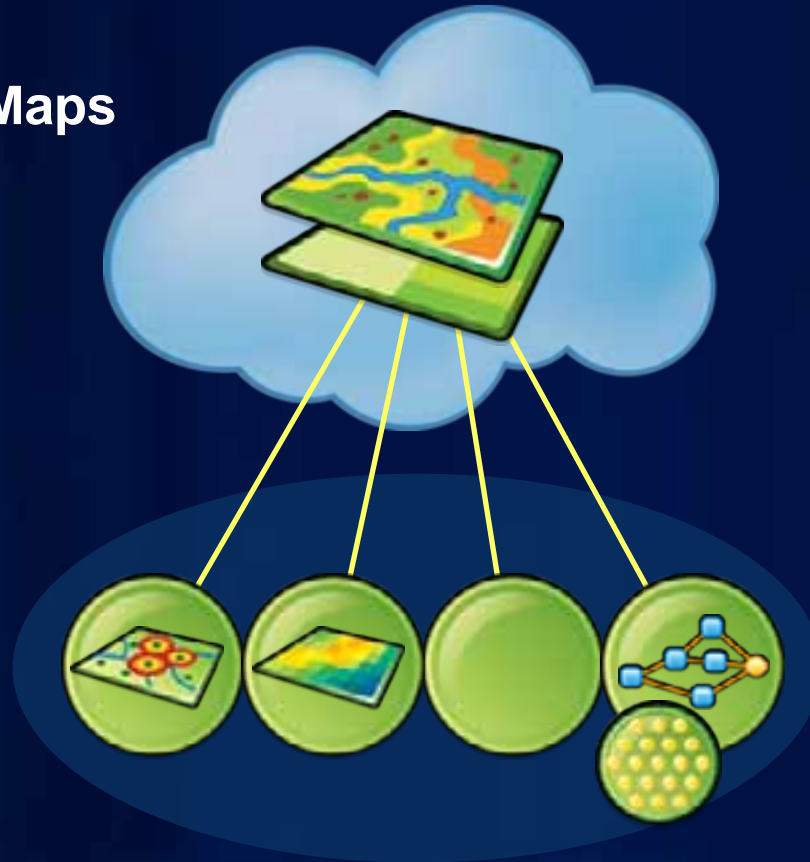
Subscriptions with hosting – **Coming Soon!**

On-premises – Portal for ArcGIS



Intelligent Maps

Intelligent Maps



Services And Data

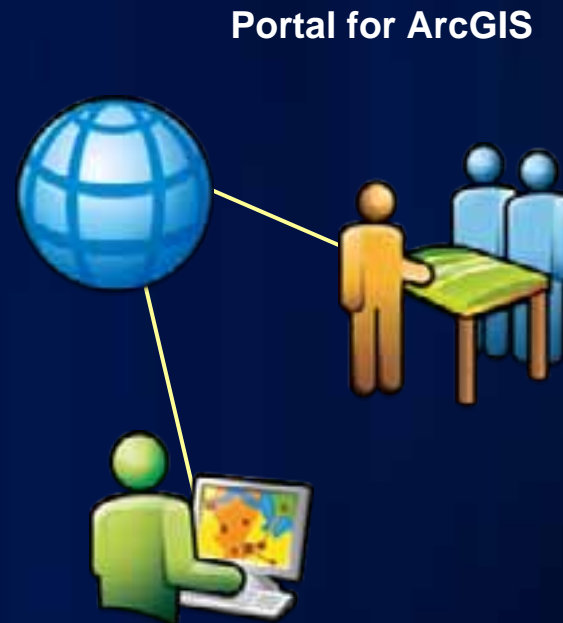
Supporting

- Visualization
- Editing
- Popups
- Analysis
- Time

Portal for ArcGIS

A private, collaborative, geospatial content management system

- **Catalog**
- **Web experience**
- **Free viewers**
- **APIs**
- **Open**
- **Identity management**
- **Admin tools**



new

Portal for ArcGIS

Enables collaborative organizations

- **Organize & manage your geospatial information**
- **Make rich & powerful maps**
- **Analyze, make better decisions**
- **Broadly share – any map on any device, anywhere**



Portal for ArcGIS

The on-premises option

- **Solution when**
 - Additional security demands
 - No public cloud option
- **Allows for**
 - Enterprise integration (*e.g. security*)
 - Extensive customization
- **Requires**
 - Installation
 - Infrastructure
 - O & M



What can I do with Portal for ArcGIS?

You can



What can I do with Portal for ArcGIS?

- **Search & access** data, maps, apps, analysis models, and other geo content
- **Upload & style** geographic data
- **Create** intelligent web maps
- **Interact** with these maps on any device
- **Embed** them in websites, blogs, and custom apps
- **Share, store & manage** maps and data
- **Collaborate** using groups
- **Access** authoritative & ready-to-use content

What types of content does it support?

- **Maps**

- WMS, KML, CSV, GPX, & Shapefiles
- Web maps
- Map, image, feature & globe services
- Map & layer packages (.lpk)
- Map templates (.mxd)



- **Apps**

- Web, mobile and desktop *(Can include code samples)*

- **Tools**

- Geocoding, GP, Geodata, & Network Analyst services
- **Coming at 10.1 – Analytic models**

What's in the box?

Comparison to ArcGIS Online

	Included	Optional	Not Included
Functionality			
Administrative tools			
Application templates			
Esri-hosted maps			
Bing / OSM			
User contributed items			
Resource Centers			

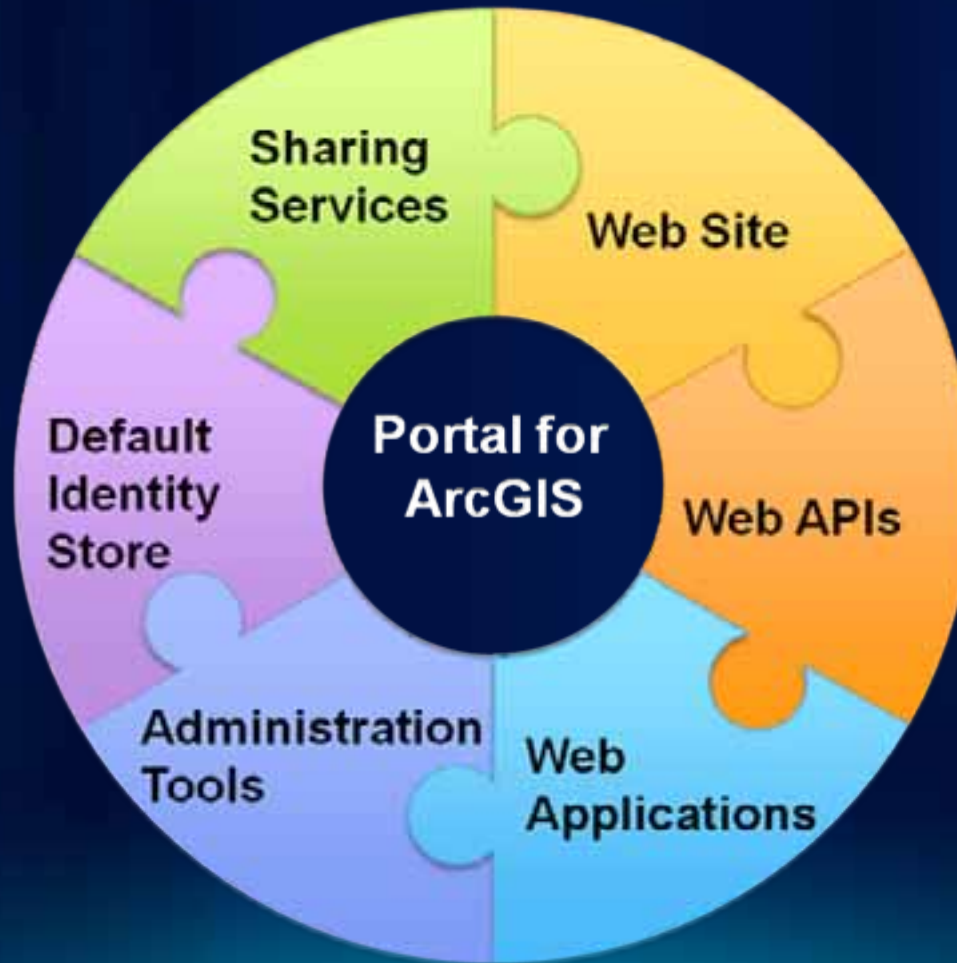
Portal for ArcGIS

Three parts

1. **Product**
2. **Content**
3. **Implementation**

Portal for ArcGIS – Product

Components



Portal for ArcGIS Within a Network

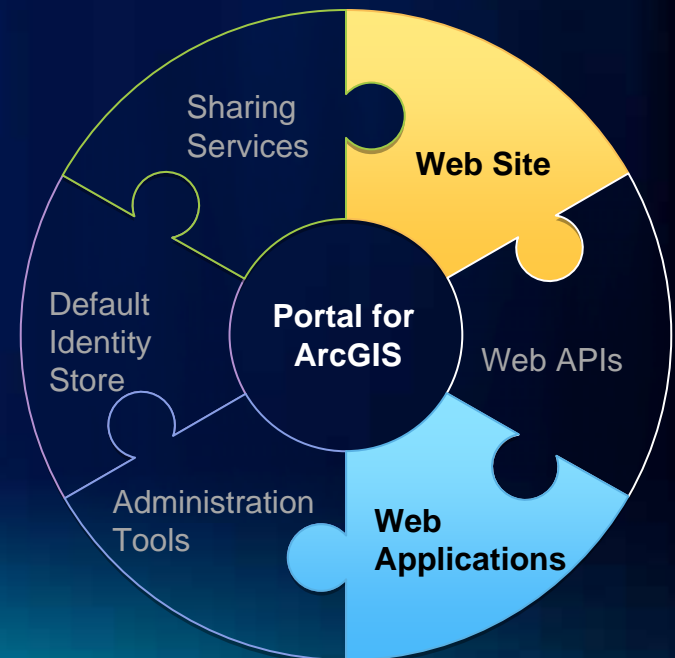
Operational Configuration



Portal for ArcGIS – Product Components

Website and Applications

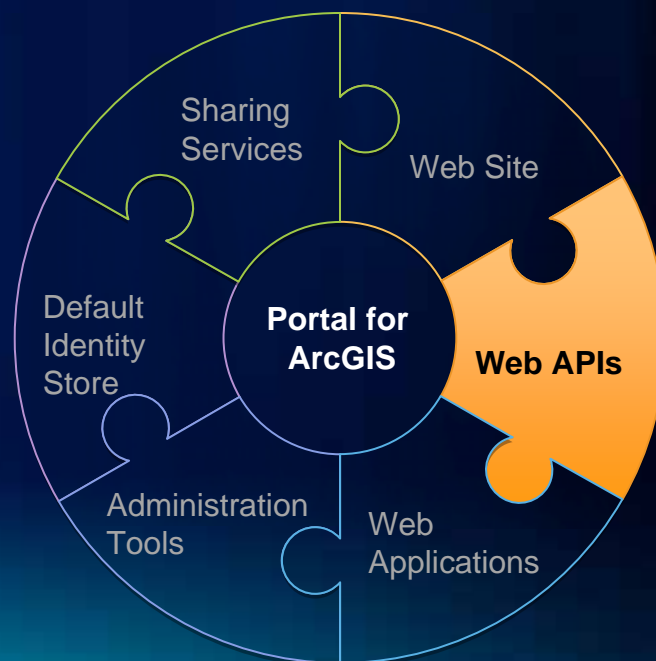
- Web browser based client
- Where users can begin their online GIS experience
- Includes Viewer and ArcGIS Explorer Online



Portal for ArcGIS – Product Components

Web API's

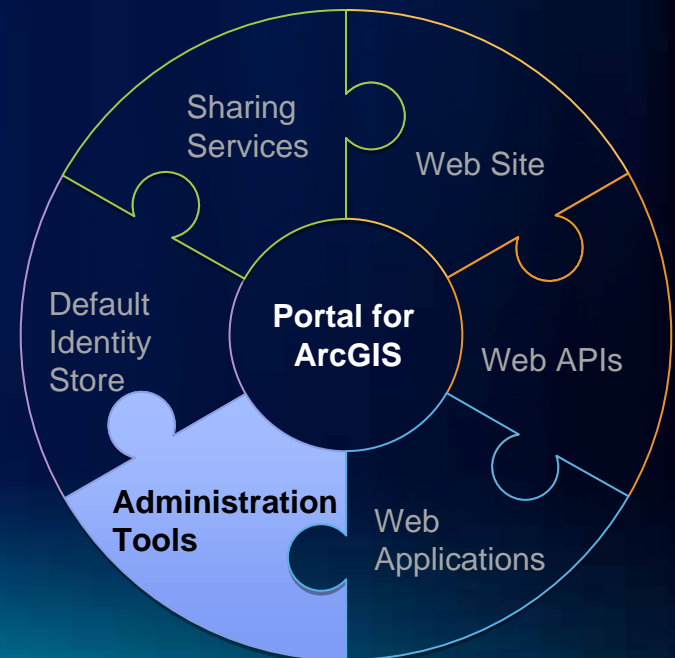
- **Client libraries for building rich GIS applications**
 - Javascript
 - Flex
 - Silverlight
 - REST
- **Stand-alone applications**
- **Web applications**
- **Custom web pages**
- **Mobile API's**



Portal for ArcGIS – Product Components

Administrative Tools

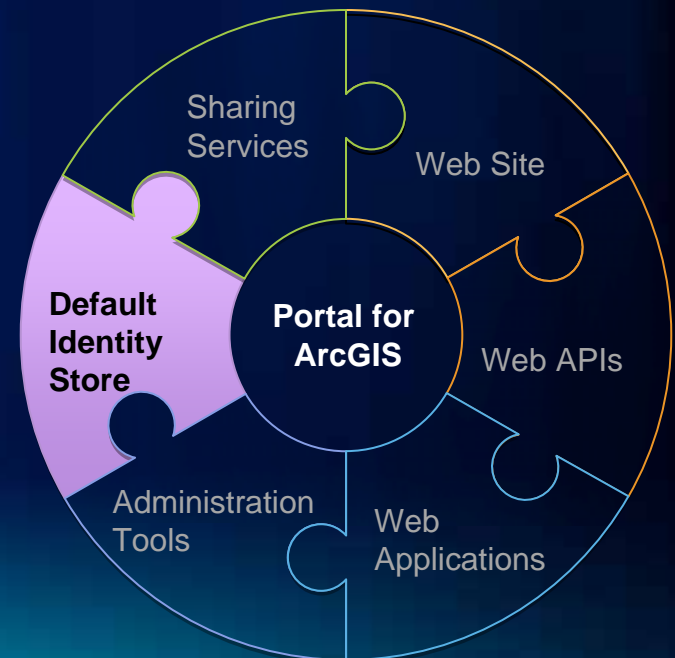
- **Tools and documentation**
 - System O&M activities
 - Software upgrades
- **A web console and API for content & group administration**



Portal for ArcGIS – Product Components

Default Identity Store

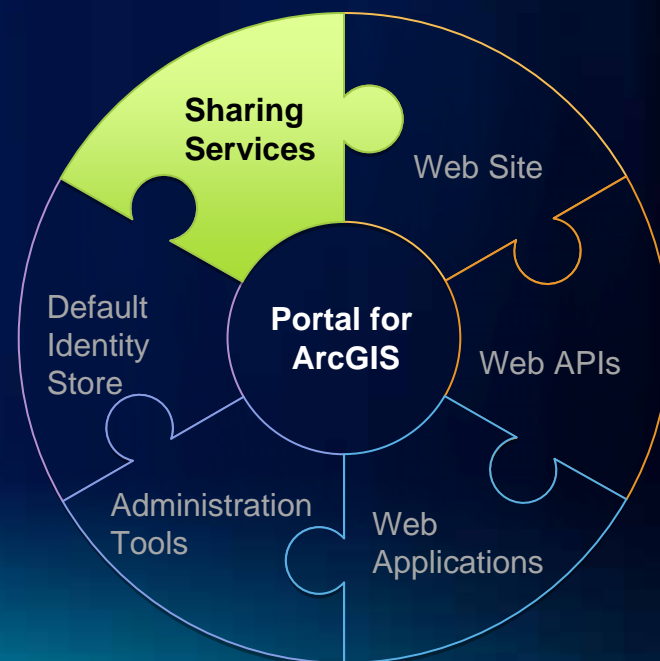
- **Database of user accounts**
 - user information (full name, email, etc)
 - Credentials for authenticating (i.e. username/password)
- **Leverages the portal's internal database**



Portal for ArcGIS – Product Components

Sharing Services

- The software that provides ArcGIS Portal with functionality needed for:
 - Cataloging
 - Search
 - Groups
- Exposes a RESTful API for developers for integrating apps with the ArcGIS Portal



Portal for ArcGIS

Administrative Capabilities

Sharing API

Default User Store



Portal for ArcGIS Content

Key Types of Content for a Successful Portal

1. **Basemaps**

- Used to create web maps and applications

2. **Foundation Content**

- Essential map layers and web applications required by the portal user community

3. **User Contributed Content**

- User generated content including web maps, layer packages, and web apps

ArcGIS Data Appliance

ArcGIS Online Maps “in a box” for deployment with ArcGIS Portal

- **Imagery Maps**
 - Imagery Mosaic
- **Street Maps**
 - Maps, Geocoding, Routing
- **Topographic Maps**
 - Rendered and Scanned Maps
- **Other Maps**
 - Reference Overlay Maps
 - Shaded Relief & Terrain Maps
 - Elevation Globe Services



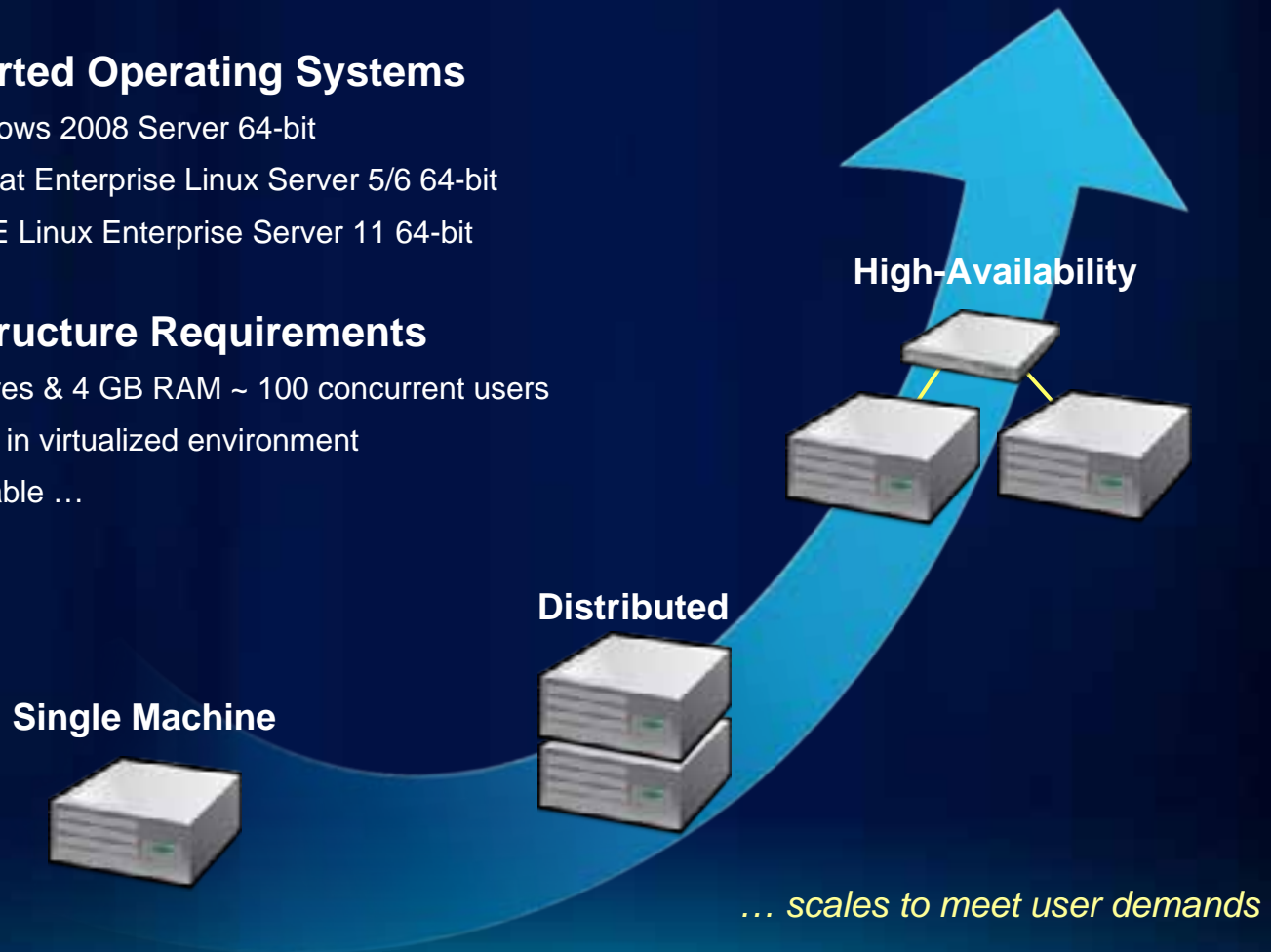
Implementing Portal for ArcGIS

- **Supported Operating Systems**

- Windows 2008 Server 64-bit
- Redhat Enterprise Linux Server 5/6 64-bit
- SUSE Linux Enterprise Server 11 64-bit

- **Infrastructure Requirements**

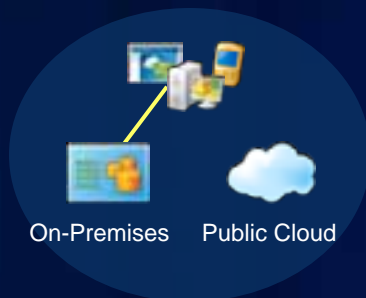
- 4 Cores & 4 GB RAM ~ 100 concurrent users
- Runs in virtualized environment
- Scalable ...



Implementation Patterns

Portal for ArcGIS Software

Private Cloud



- No external dependencies
- On-premises portal
- On-premises content
- On-premises basemaps
- On-premises help

Hybrid Cloud

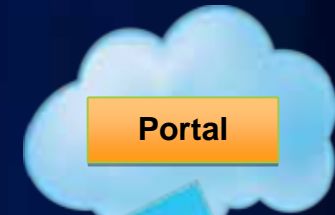


- Uses internal & external resources
- On-premises portal
- On-premises content
- Online content
- Online basemaps
- Online resource centers

Common Implementation Activities

Required and optional activities

- **Initial rollout**
 - Plan infrastructure
 - Install & configure software
 - Customize website
 - Integrate security infrastructure
 - Migrate / Integrate existing catalog & CM systems
 - Register content, services & apps
- **Sustainment**
 - Build basemaps & other foundation content
 - Build apps & tools
 - Operations & maintenance



Availability

- **Portal for ArcGIS**
 - Product release in August with Jumpstart Package
 - Installers available later this year
 - Get started now!
- **Data appliance is available now**
- **ArcGIS Online subscriptions as an option**
 - Participate in the beta program

Portal for ArcGIS and ArcGIS Online

For more information

- **Get an ArcGIS Online account and get started!**
- **Demo Theatres**
- **ArcGIS Online and Web GIS Showcases**
- **Technical Workshops**
- **Watch for beta program for organizations as part of 10.1 beta programs**

Q&A



Session Evaluations:

www.esri.com/sessionevals

Introducing Portal for ArcGIS





esri