

ArcGIS 10.1 Road Ahead: An Overview of the System



ArcGIS 10.1 Road Ahead: An Overview

Damian Spangrud

David Cardella

Ismael Chivite

John Baleja

Paul Ross

Rob Elkins

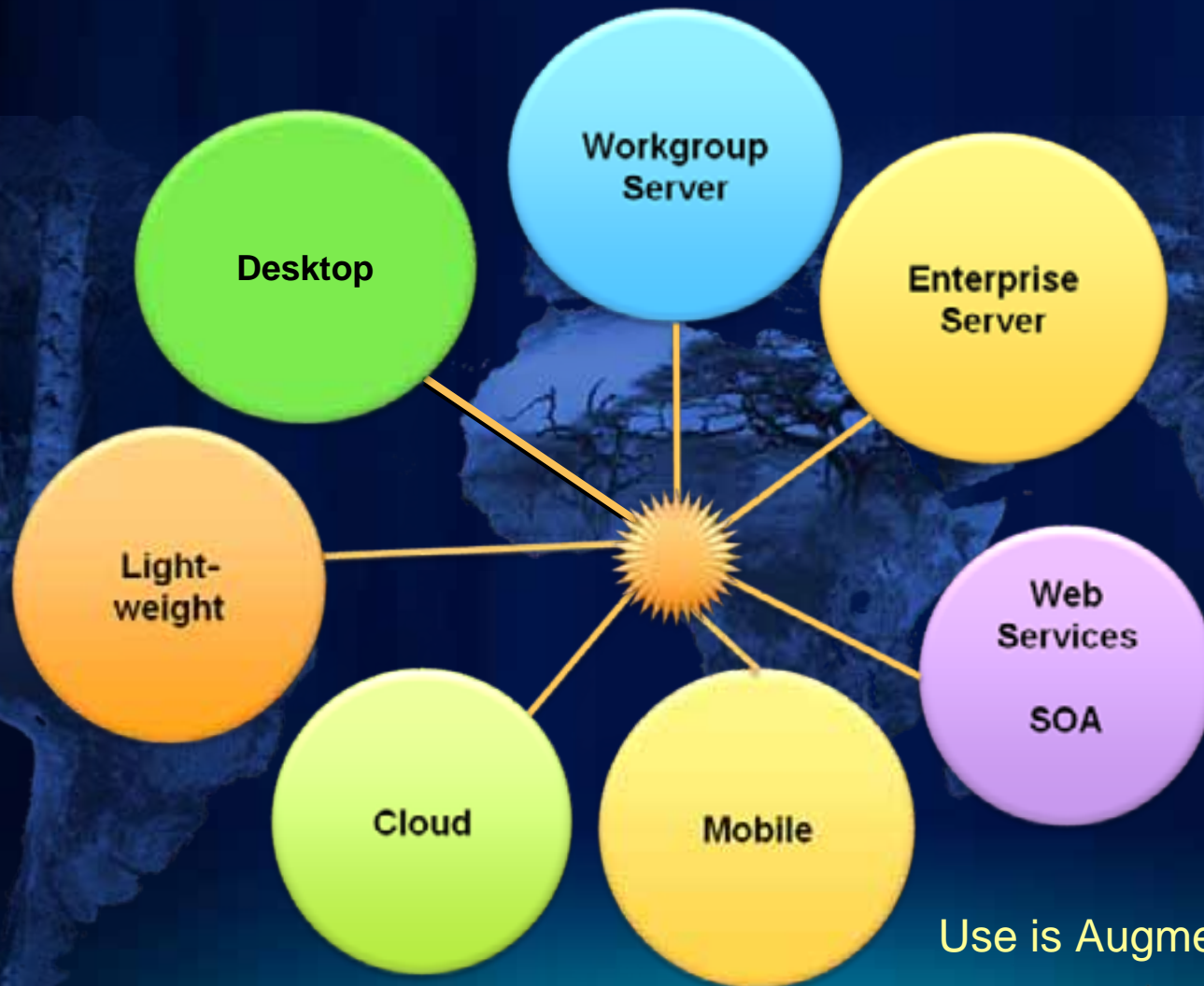


Logistics

- Cell phones/Mobiles/Communicators/.....
- Review this (and all) sessions:
www.esri.com/sessionevals

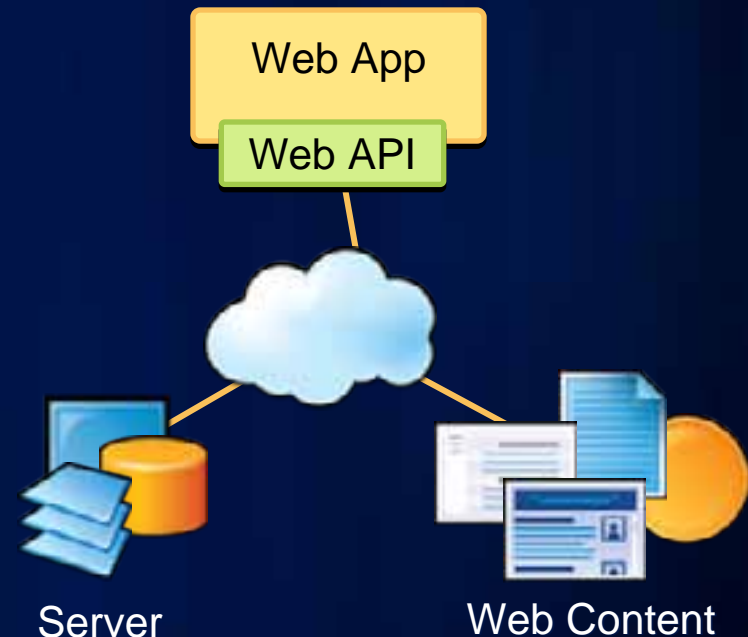
Trends in GIS

GIS Has Evolved



Use is Augmented, not replaced

Rich Web Applications



Straightforward, Easy, Focused...

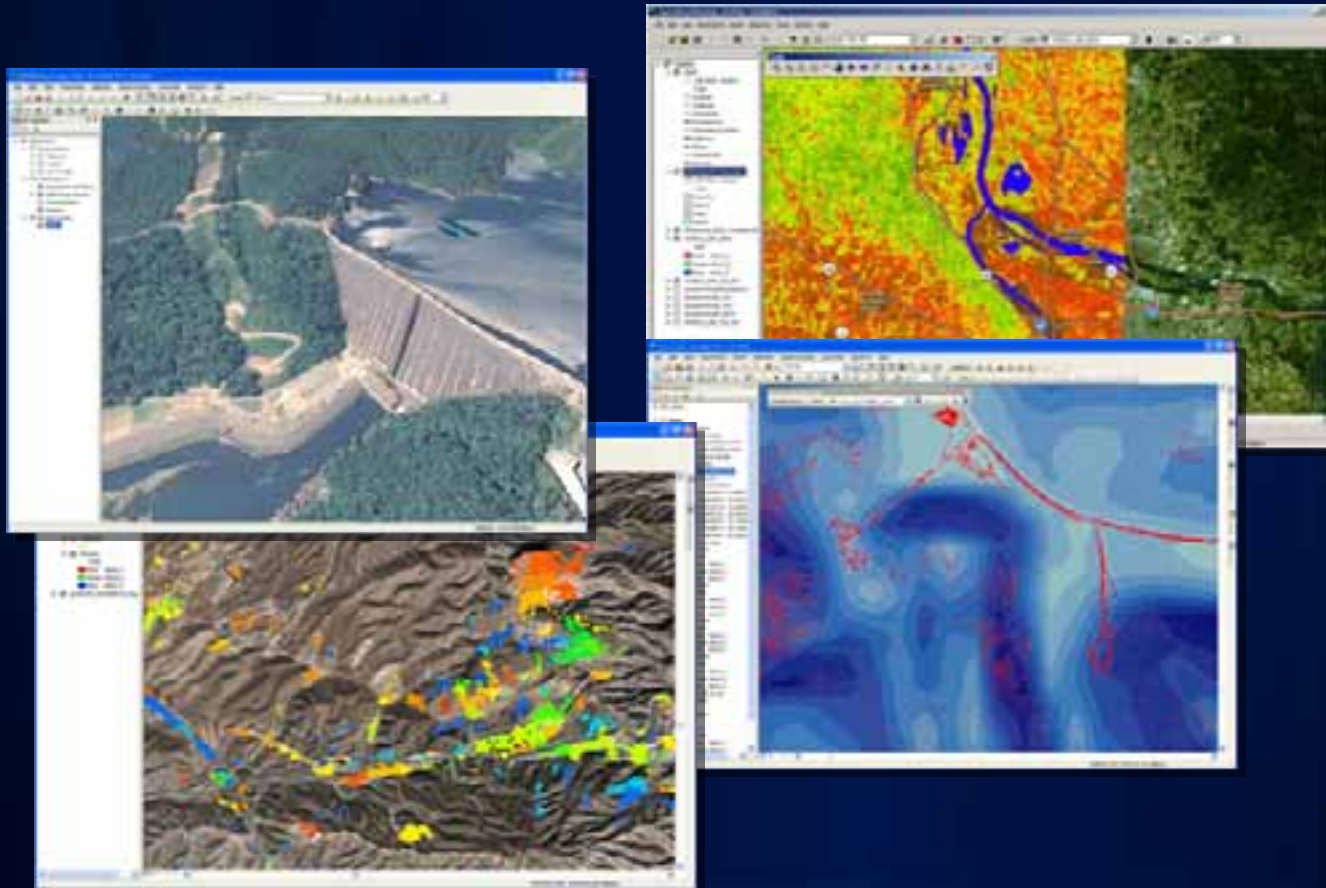
Content is Key



Information Sharing is Critical

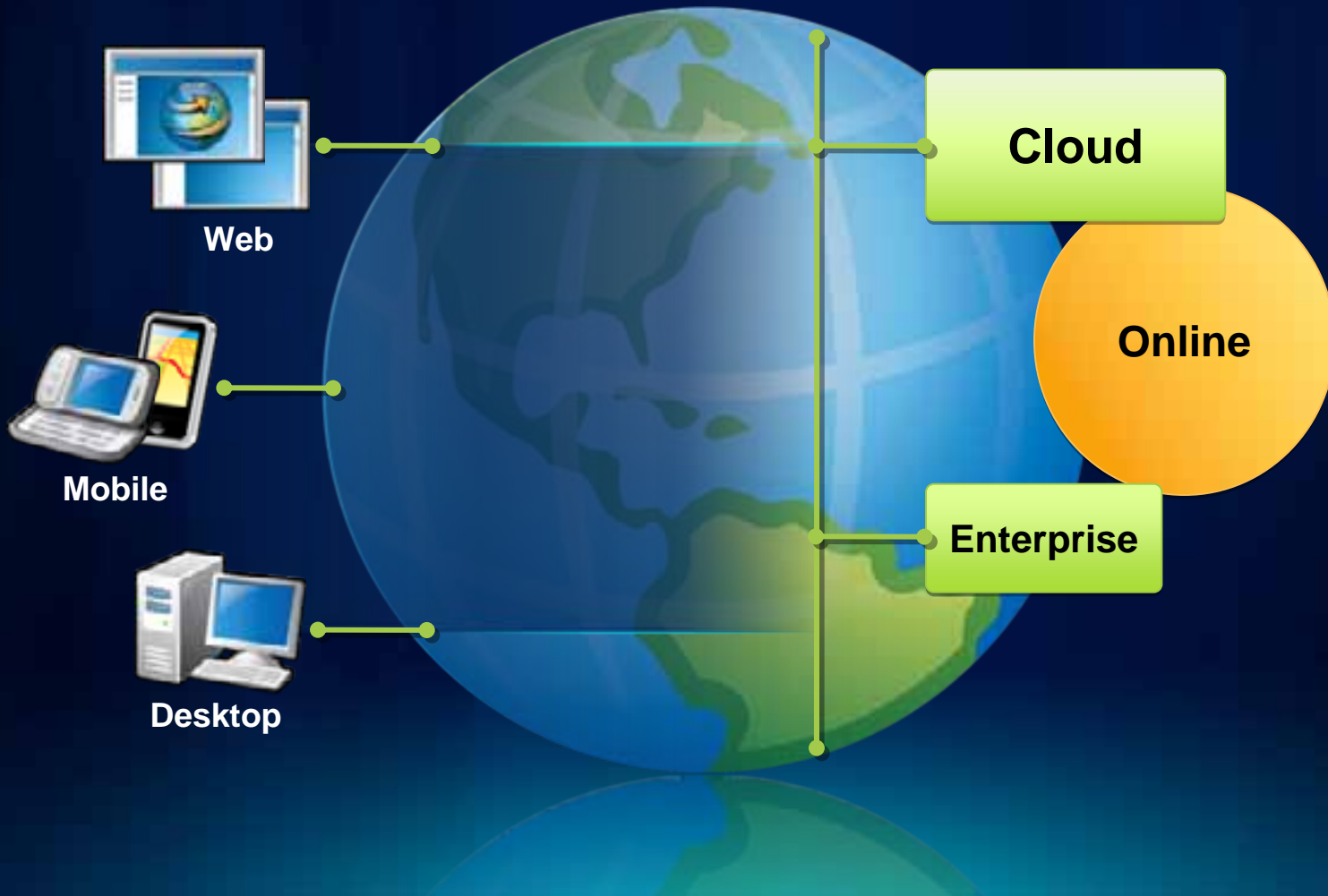


Imagery Integration



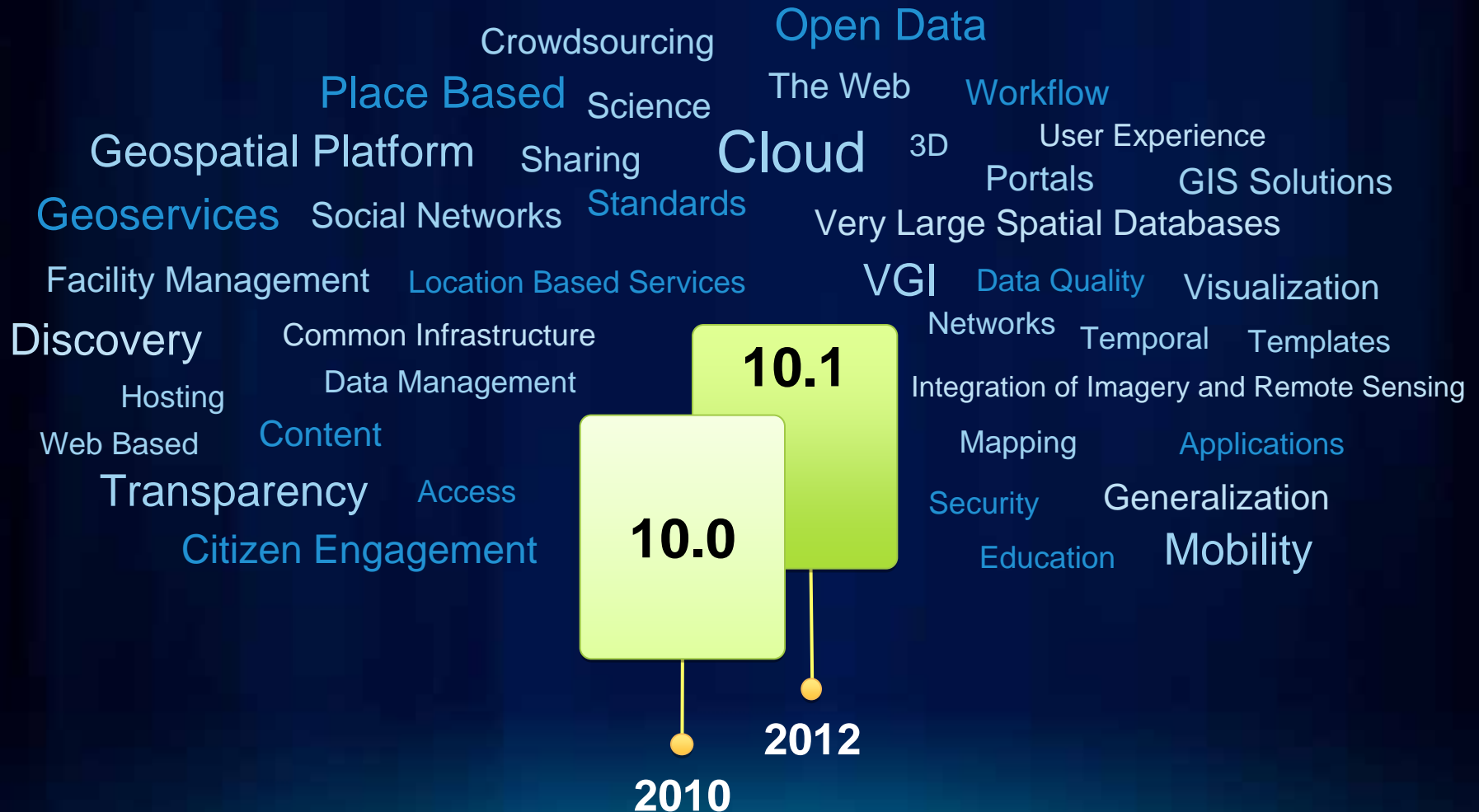
Imagery is Core to GIS, GIS is core to Imagery

ArcGIS 10.1



ArcGIS 10.1

Introducing Many New Capabilities



Builds on Success of ArcGIS 10

ArcGIS 10.1 Themes

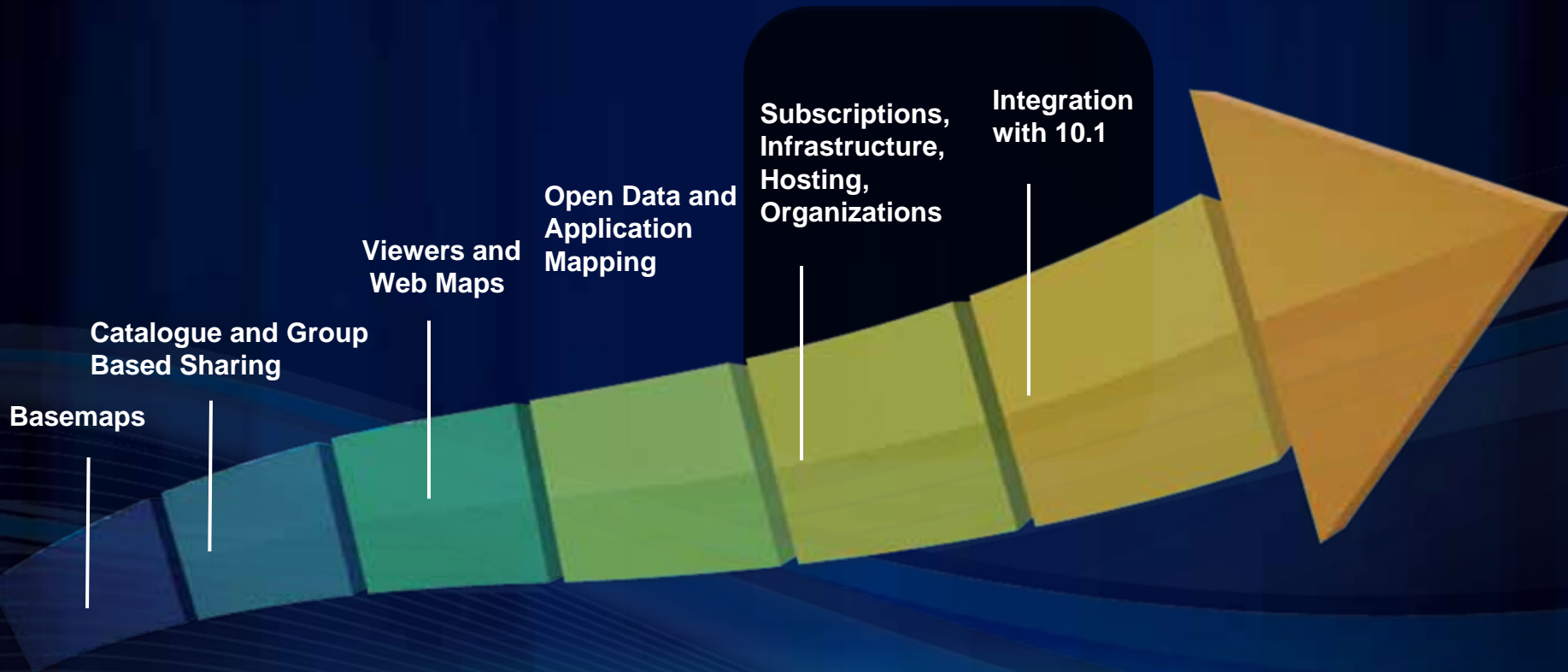
- **Provide a New Online GIS Platform**
- **Make Sharing easy**
- **Reinforce Traditional GIS**
- **Strengthen Server GIS**
- **Expand Mobile GIS**
- **Empower Developers**

ArcGIS Online

ArcGIS Online is Evolving Rapidly

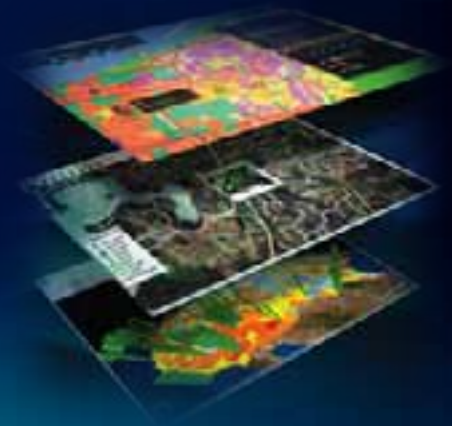


ArcGIS Online is Evolving Rapidly



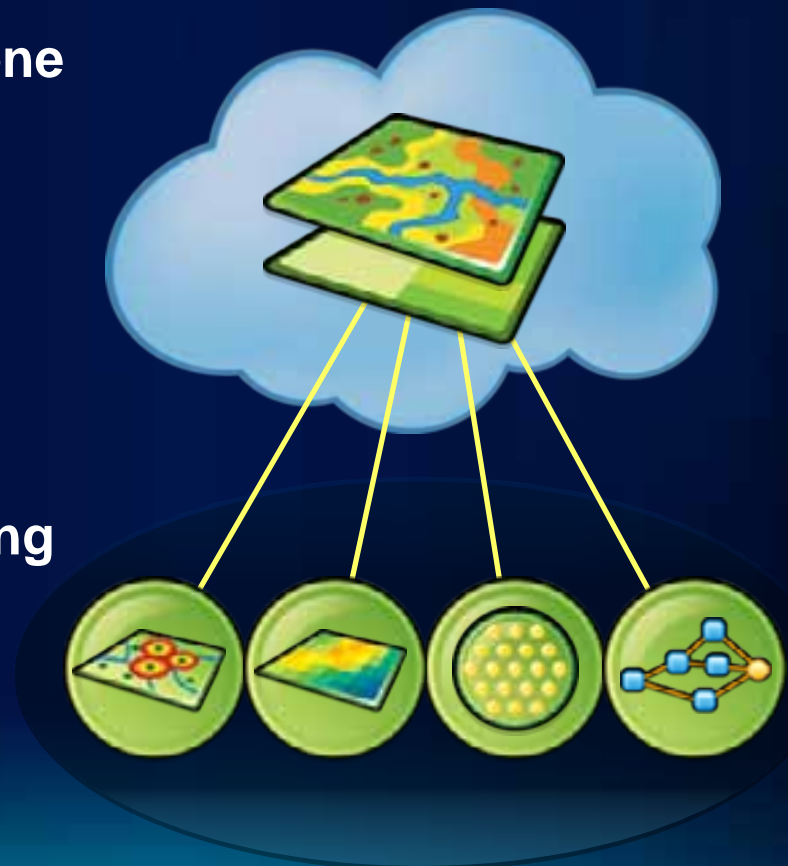
What can I do with ArcGIS Online?

- **Leverage existing maps and data**
- **Upload and Connect to Your Data**
- **Style and Create intelligent webmaps**
- **Store, Manage, and Share**
- **Interact with the map on any device**
- **Embed in web sites or applications**
- **Compliment Current Infrastructure**
- **Organize your organizations data**



Intelligent Maps

- Interactive
- Easily Created by Anyone
- Incorporates multiple services & datasets
- Visualize
 - Story
 - Situational Awareness
- Editing & crowd sourcing
- Analysis



Services and Data

Geospatial Infrastructure

- **Create hosted map services**
 - Tiled maps and feature services
 - No servers, infrastructure, or technical expertise
- **Managed, secure, scalable**
- **Catalog of the organizations geospatial content including your existing ArcGIS Server services**
- **Personalized look and feel**



Hosted Map Services

- **Publish from ArcMap 10.1**
 - Create feature and/or tile services from within the software
 - Define the tiling scheme and other parameters
 - Tiles are generated in the cloud as part of the service
- **Publish feature services from web clients**
 - ArcGIS.com
 - ArcGIS Explorer Online
 - Feature services from
 - CSV's, GPX's
 - Shapefiles

Organizational Online Site

- **Create**
 - **Secure groups**
 - **Control Data Sharing Policies**
- **Administer**
 - **Web Services**
 - **Users / Access**

Sharing Maps and Analysis

Sharing as a Package

Professional to Professional



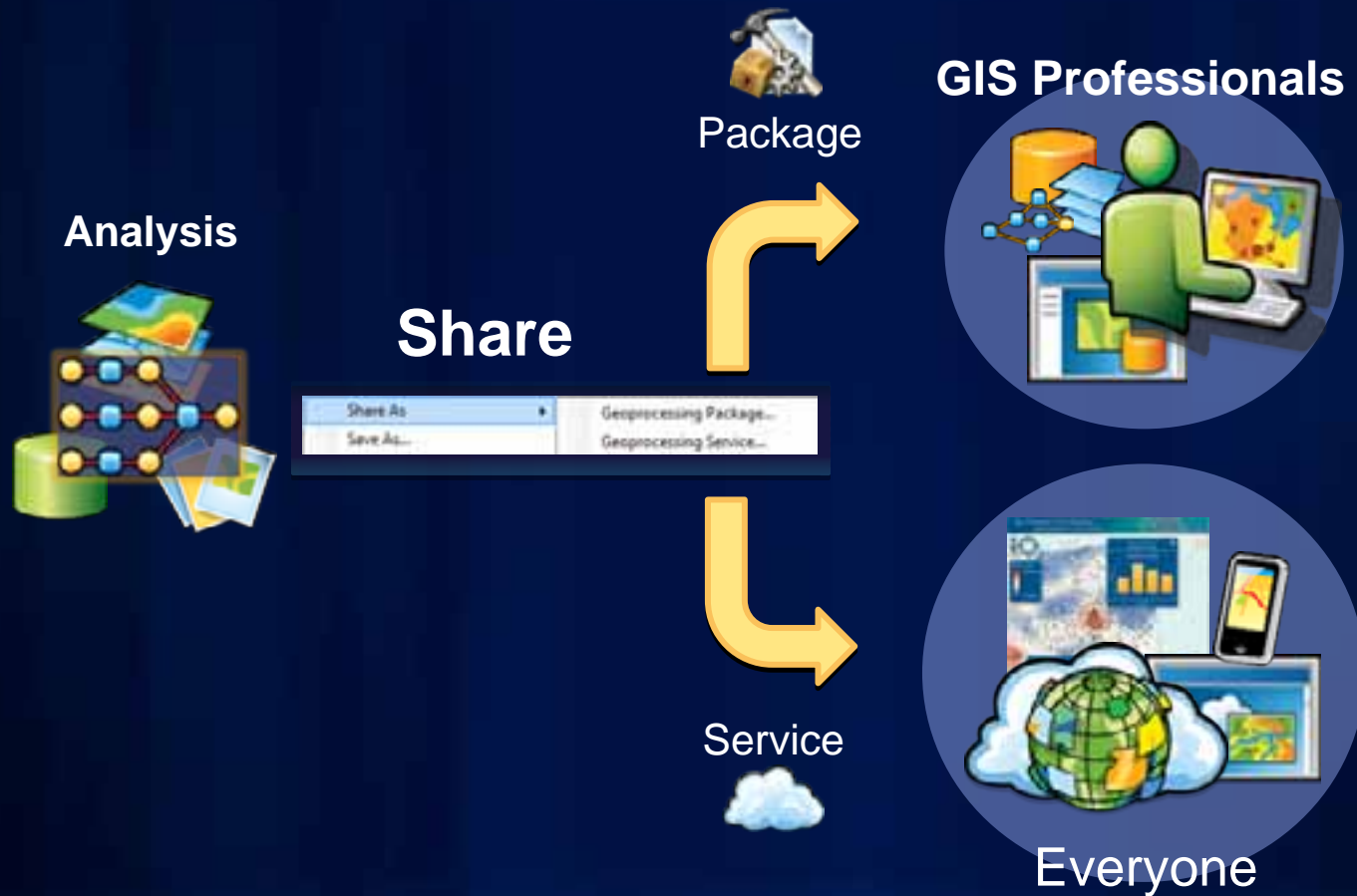
Sharing as Services

Professional to Everyone

- **Make it easier to share GIS resources**
 - Unified sharing experience
 - Comprehensive Analysis
 - Sharing to servers in the cloud and to ArcGIS Online

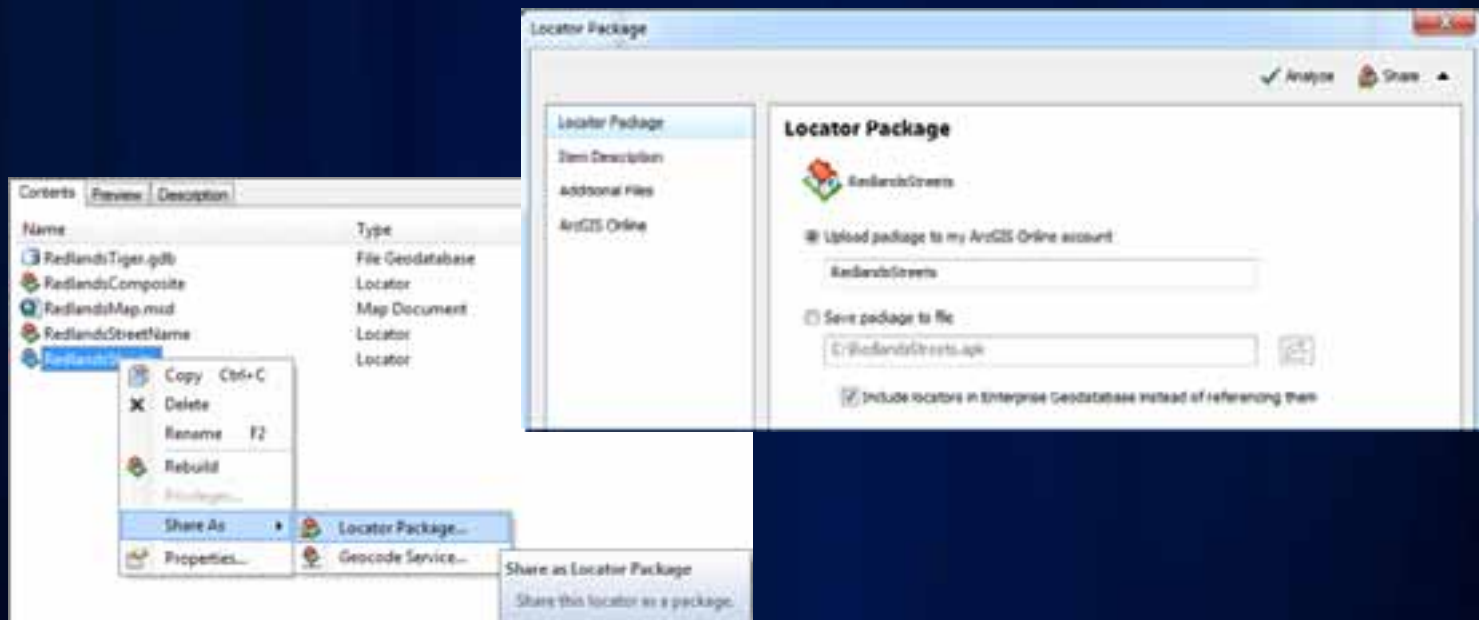


Sharing Analysis



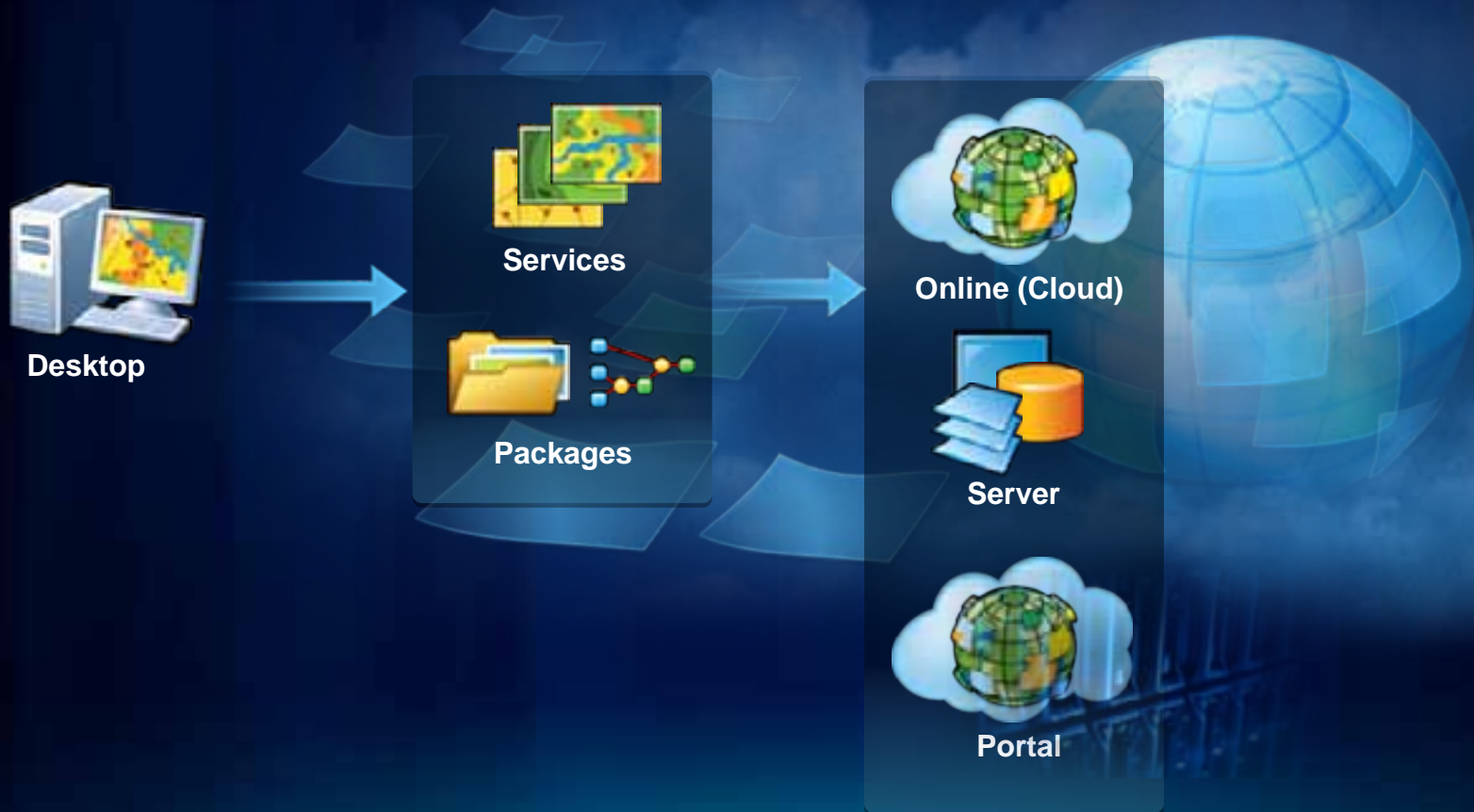
Sharing Locators

- Packaging locators
- Share as a geocode service



Sharing as Services

Professional to Everyone



Improving GIS Tools

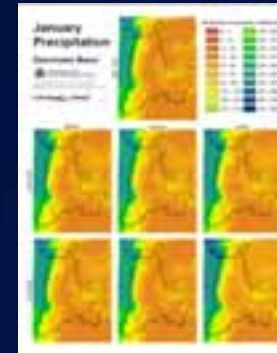
Mapping and Visualization

Enhancing the functionality from 10

Dynamic Legends



More Python scripting

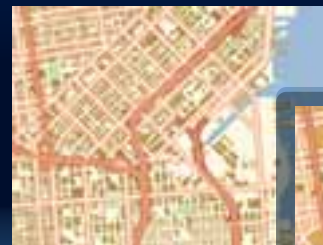


Time live mode



Rule-Based Generalization

Before



After



Mapping Improvements

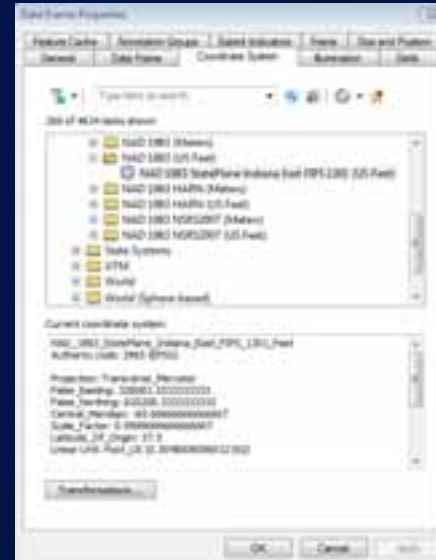
Layout



Property Use	
	Ag - Vacant lot (R)
	Cash grain/growing farm (T)
	Commercial Other structure (T)
	Commercial milk warehouse (T)
	Industrial small shops (T)
	One Family Dwelling Platred (C)
	Rers - Vacant Platred lot (R)
	Small plat (T)
	Buildings (T)



Coordinate Systems



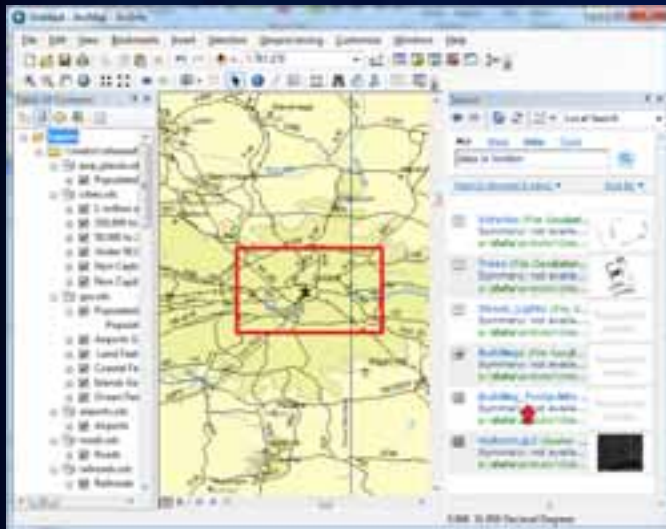
Symbology



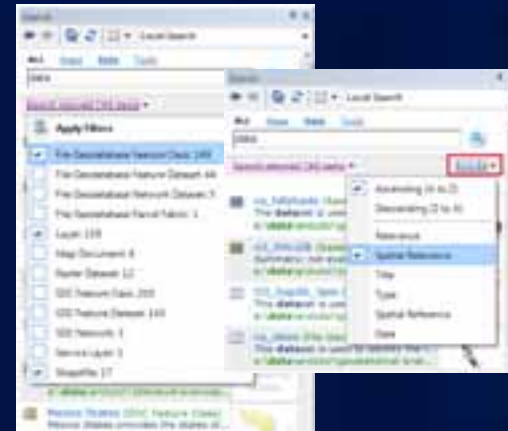
Labeling



Improved Desktop Search



Spatial Search
(extent or name)



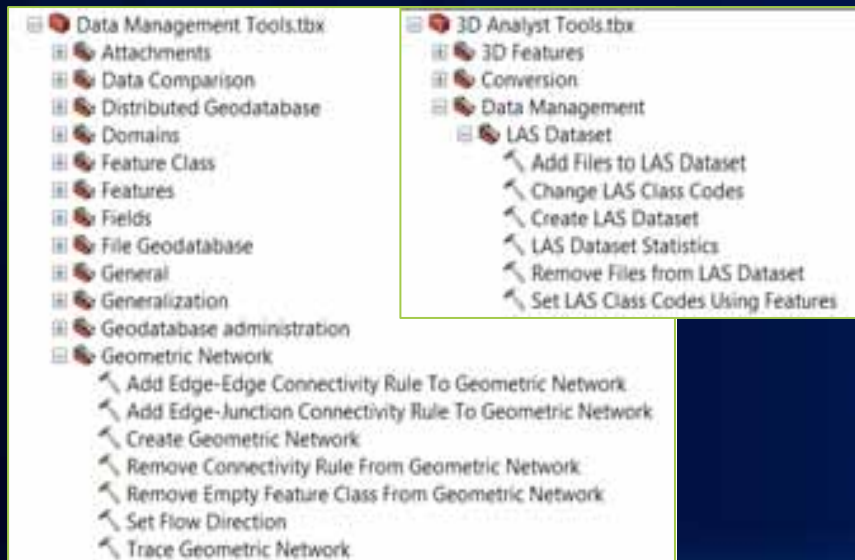
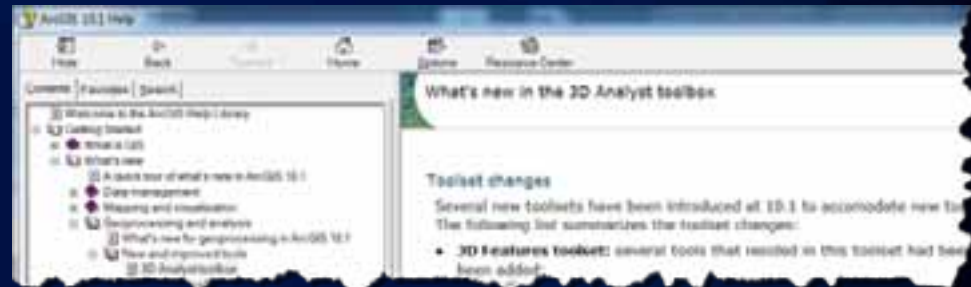
Improved Sort & Filter
(Type, Projection, Spatial relevance,...)

Python Improvements

- **Network Analyst Module**
 - Automate NA workflows through Python
- **Data Access Module**
 - Fast cursor performance
 - Edit operations
 - Geometry operators
- **Python Toolboxes**
 - Easier for python developers to create tools
 - Create tools outside of desktop
- **Python Add-ins**
 - Extend desktop functionality with Python

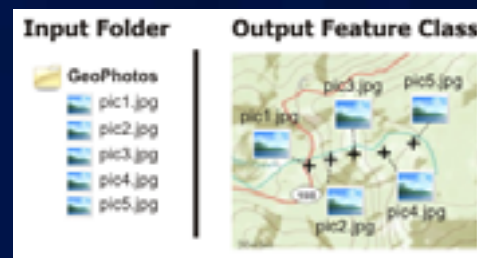
New Geoprocessing Tools

- 85 New Tools
- 117 New Parameters

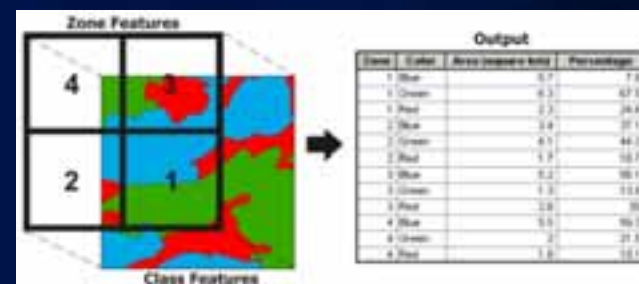


More Formats and Better Support

- GOS (GPX) to Layer
- GeoTagged Photos To Points
- Better KML experience
- Easier to do complex workflows
 - Tabulate Intersection
 - Polygon Neighbors

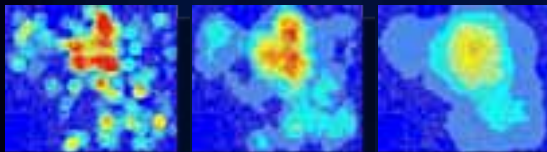


Geotagged Photos To Point



Tabulate Intersection

Improved Analysis Tools



1/4 Mile
Radius

1/2 Mile
Radius

1 Mile
Radius

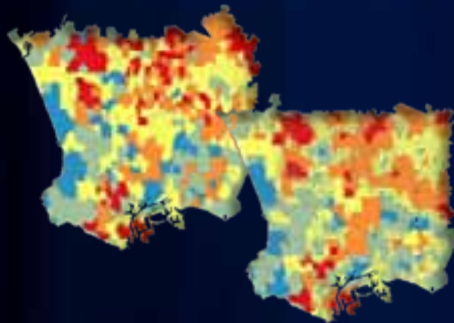
Spatial Scale



Geodetic Buffers



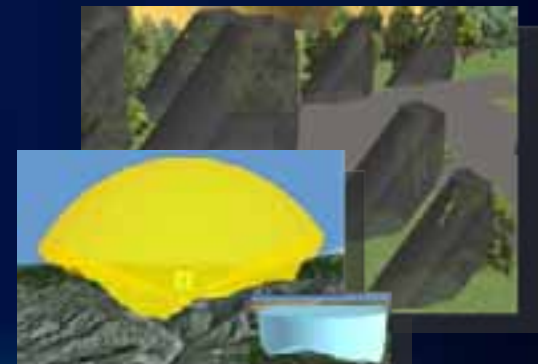
Space /Time Clusters



Areal Interpolation

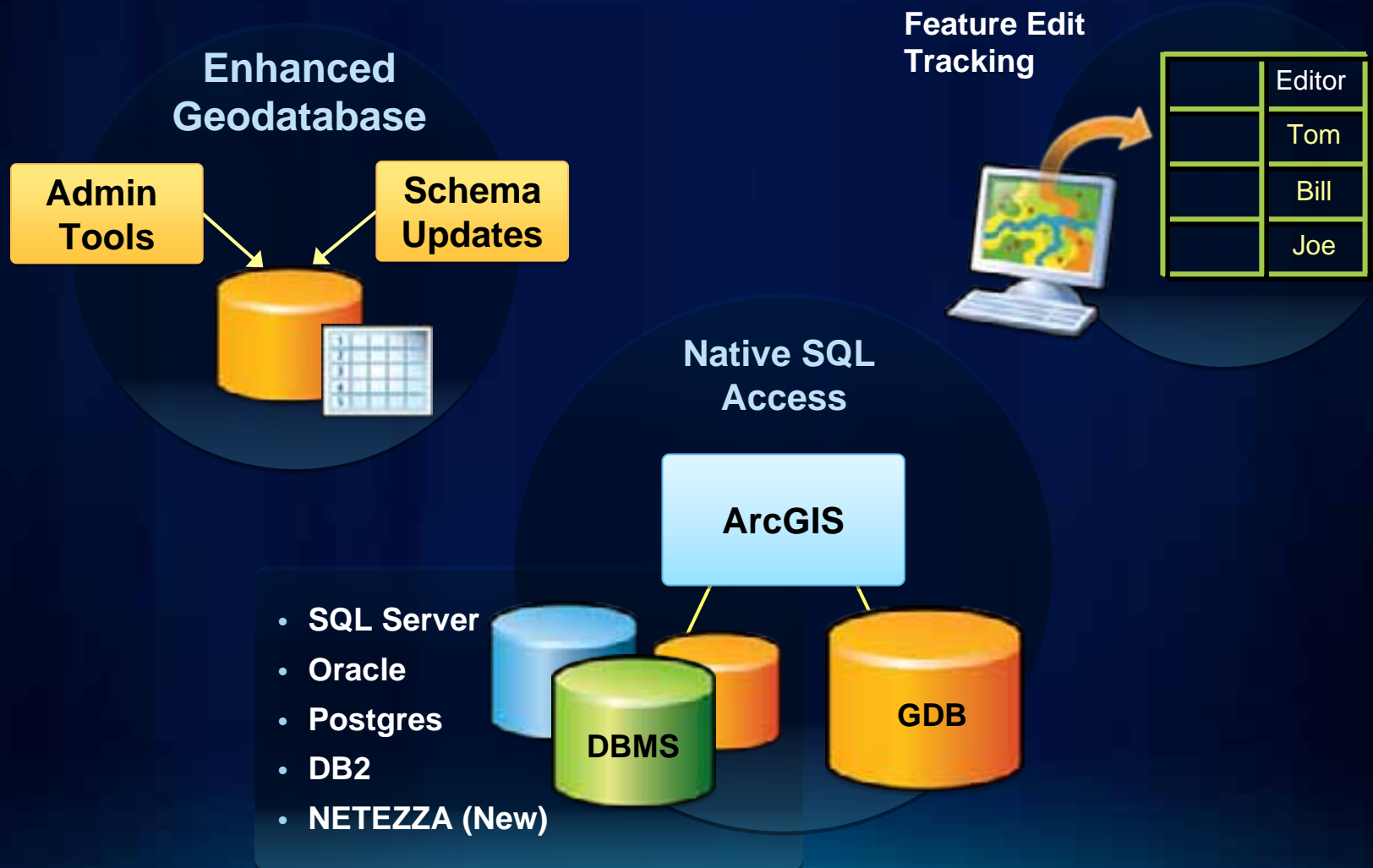


Empirical Bayesian Kriging



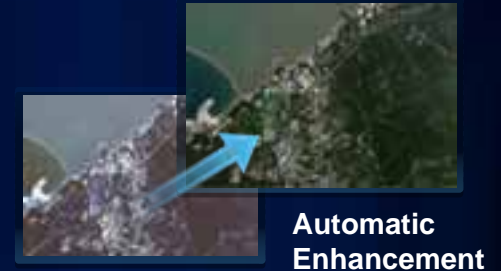
3D Shadow & Visibility
Volumes

Geodatabase Improvements



Imagery

- Automatic Image Enhancement / More Tools
- Mensuration (Height measurement)
- Easier Georeferencing
- Raster Products
- Additional Format/Models (CSM)
- Mosaic Dataset Analyzer
- REST Based Management (New, Update, Delete, Mensuration , Metadata...)

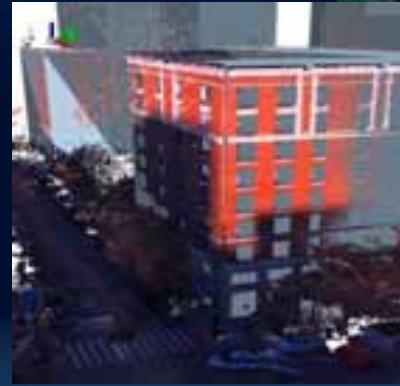


Integrates Video (FMV)



Lidar

- Support Lidar LAS files
- Dynamic Mosaic
- Use directly as
 - TIN
 - Raster
 - Point Cloud
- Visualization & Analysis



Tools for 3D Virtual Cities

City planners, emergency response, public safety



Easily
find, consume
and share
city data online



Intuitive
editing of city
level data



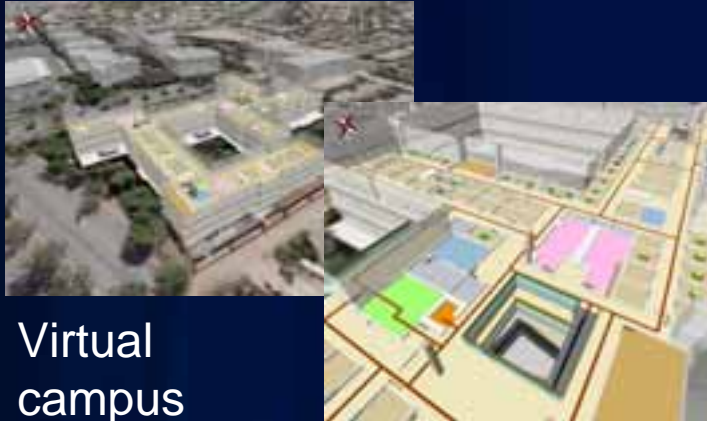
Targeted city analysis
tools



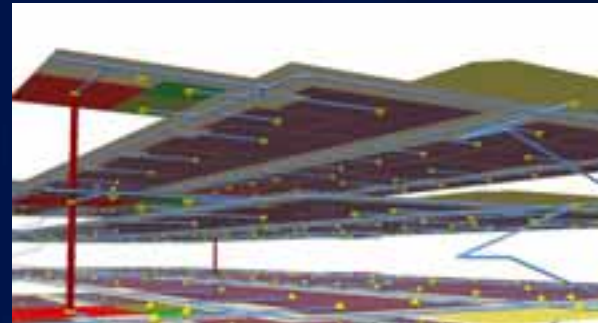
Performance /
Usability

Tools for 3D Virtual campuses

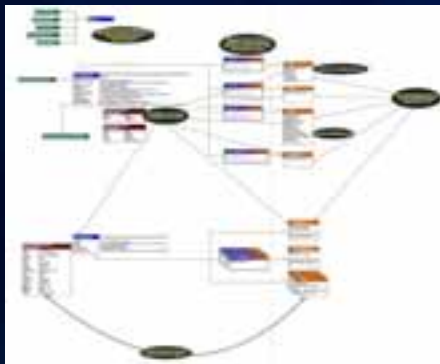
Universities, military bases, hospitals



Virtual
campus
template



Intuitive editing of
campus level data

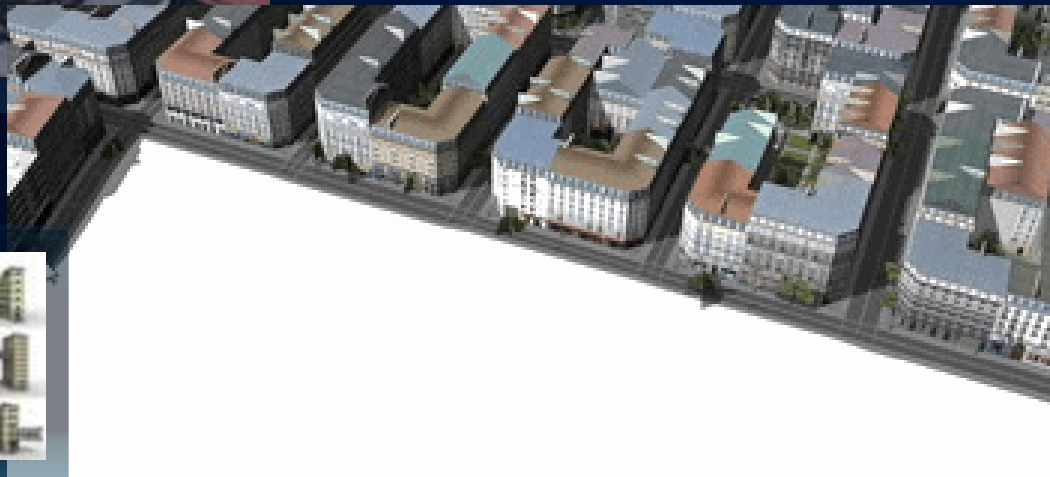


BISDM 3.0



Easily find, consume and
share campus data
online

New Tools to Build 3D Content



Not part of 10.1, will be integrated in the future

ArcGIS 10.1 Server

Vision

**Powerful
GIS capabilities**



**Delivered as
Web services**



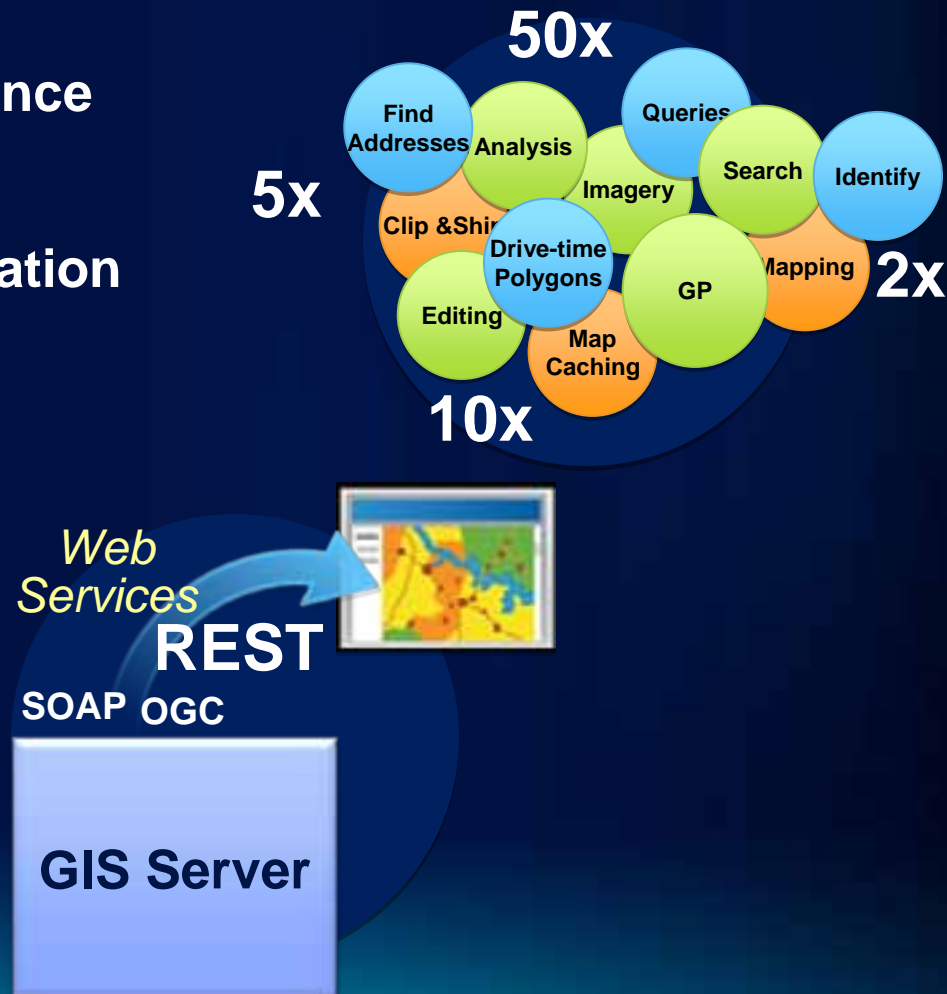
**To help solve real problems
by real people**



ArcGIS Server

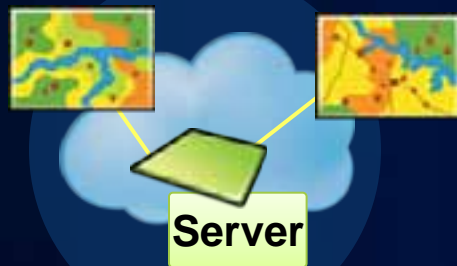
Enhancing the Architecture and Adding Capabilities

- Improved Performance
- Easy Install/Admin
- Simple Service Creation
- Native 64 Bit
- Strong Linux
- Highly Scalable

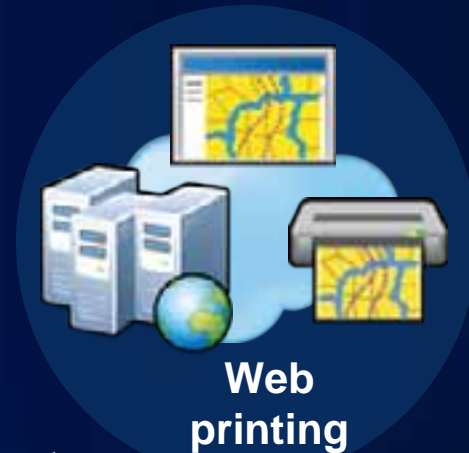
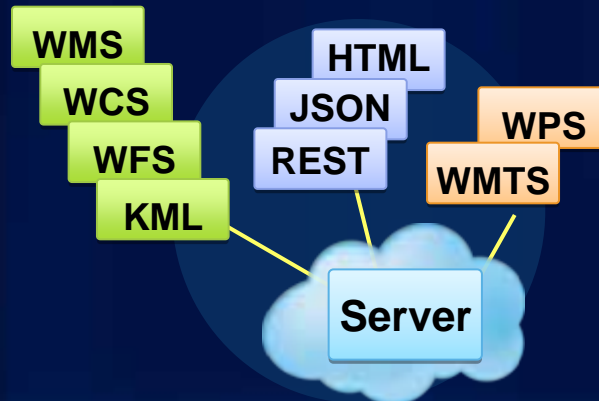


More

On-the-Fly Symbology



Standards Support



Listening to your specific functional requests

Cloud

Enhanced and Expanded

- More cloud friendly architecture
 - Better clustering support: publishing, async-gp and caching
 - Easier to administer: launch, auto-scaling etc
 - Publishing from ArcGIS Desktop
- Enhanced **Amazon** support
- Support for **Azure**
 - GIS Server and Spatial Data Server
 - Support for SQL Azure
- Private Clouds
 - Cloud burst
 - VM Ware

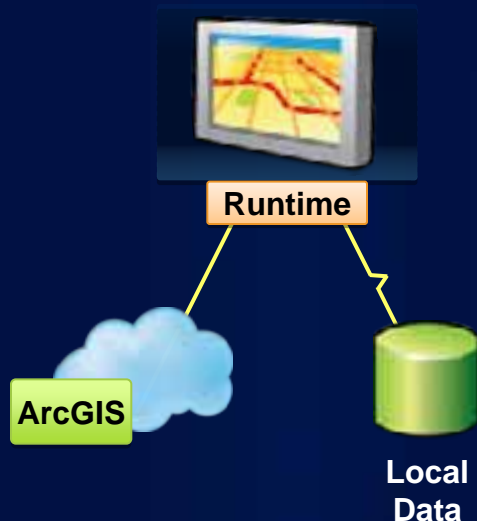


ArcGIS Runtime

ArcGIS Runtime

A New Lightweight Platform for Developers

- Easy to Deploy
- Fast & Powerful
- Small Footprint
- Windows/Linux
- 64-Bit Native (& 32)
- WPF/Java/Qt



... Supports in Connected and Disconnected Environments

ArcGIS Runtime for Windows and Linux

Addresses Limitations With Current Technology

- **New Architecture (64 bit)**
- **Easy to Deploy Solutions**
 - Software, maps and data
 - No install required
 - Deploy only needed components
 - Side-by-Side deployment
 - Independent of other ArcGIS installs
- **Modern API (WPF, Java and Qt)**
- **Supports both Connected and Disconnected Environments**
- **Mapping, Geoprocessing and Editing**

Runtime is a Key Component of Our System

Configurable applications and native ArcGIS Runtime SDKs

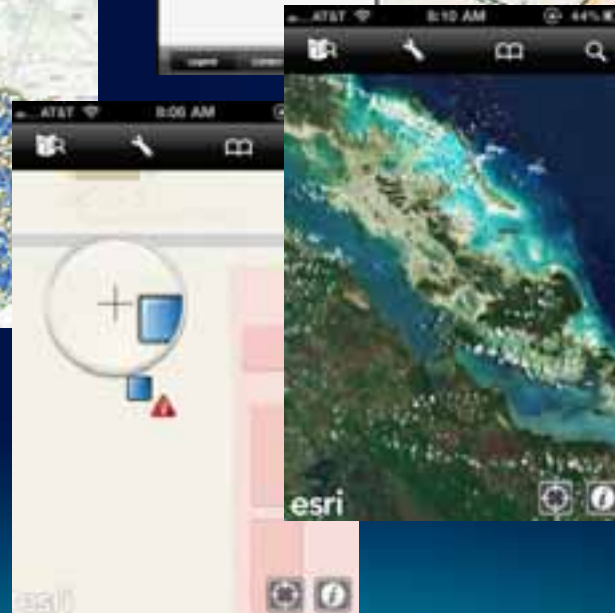
Windows	Linux	iOS	Android	Windows Phone	Windows Mobile
Applications <ul style="list-style-type: none">• ArcGIS Explorer*	Applications <ul style="list-style-type: none">• None	Applications <ul style="list-style-type: none">• ArcGIS	Applications <ul style="list-style-type: none">• ArcGIS	Applications <ul style="list-style-type: none">• ArcGIS	Applications <ul style="list-style-type: none">• ArcGIS
Runtime SDK <ul style="list-style-type: none">• WPF, Java, Qt	Runtime SDK <ul style="list-style-type: none">• Qt, Java	Runtime SDK <ul style="list-style-type: none">• Objective C	Runtime SDK <ul style="list-style-type: none">• Java	Runtime SDK <ul style="list-style-type: none">• Silverlight	Runtime SDK <ul style="list-style-type: none">• .NET
					

Devices Get Easier

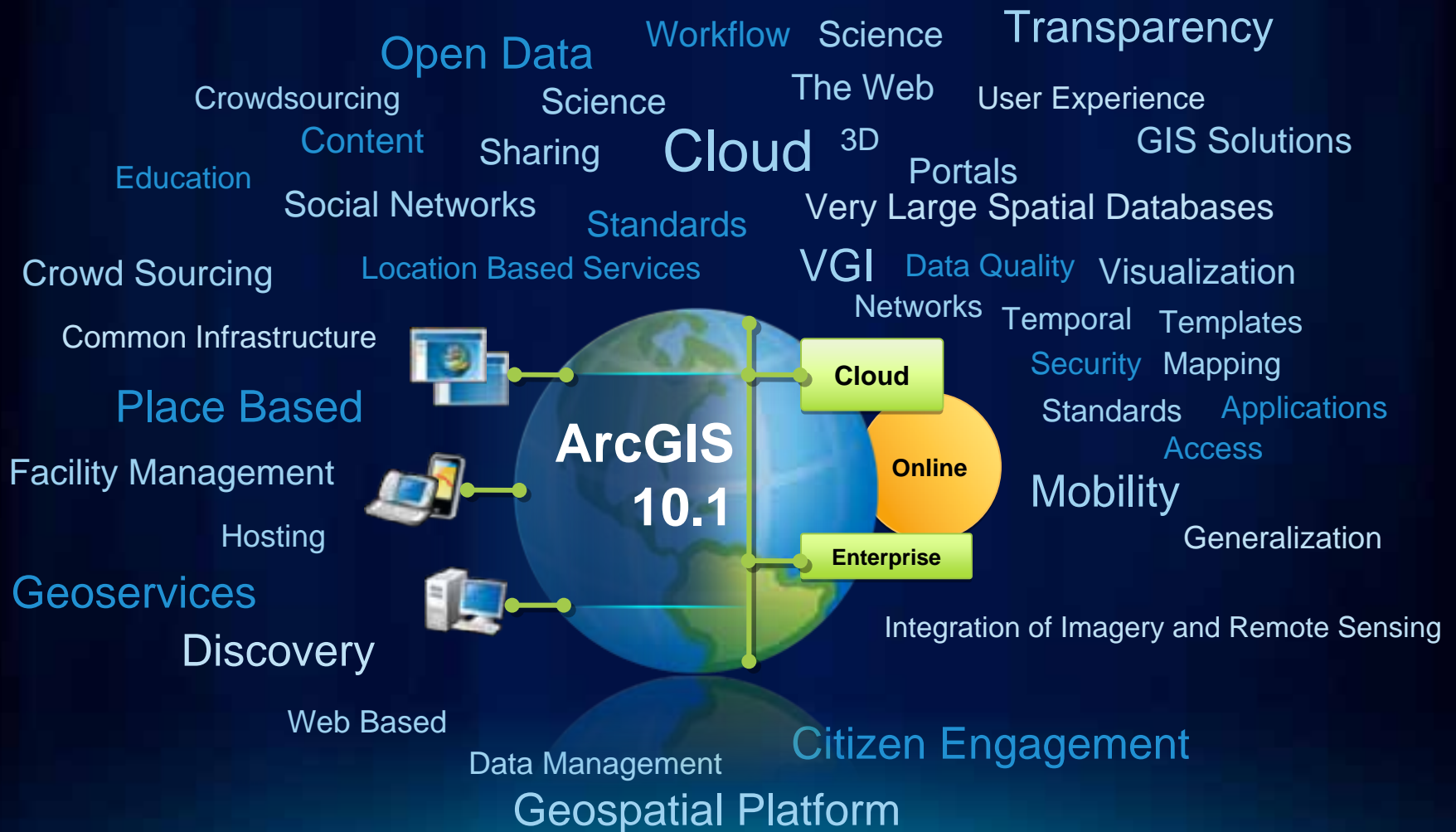
- Waypoint Navigation
- Edit Existing Geometry
- Geodatabase Attachments
- Simplified Data Collection
- Bookmarks
- Map Notes and popups
- Dateline Support
- ArcGIS Portal support



Work with your Mobile GIS Device Offline

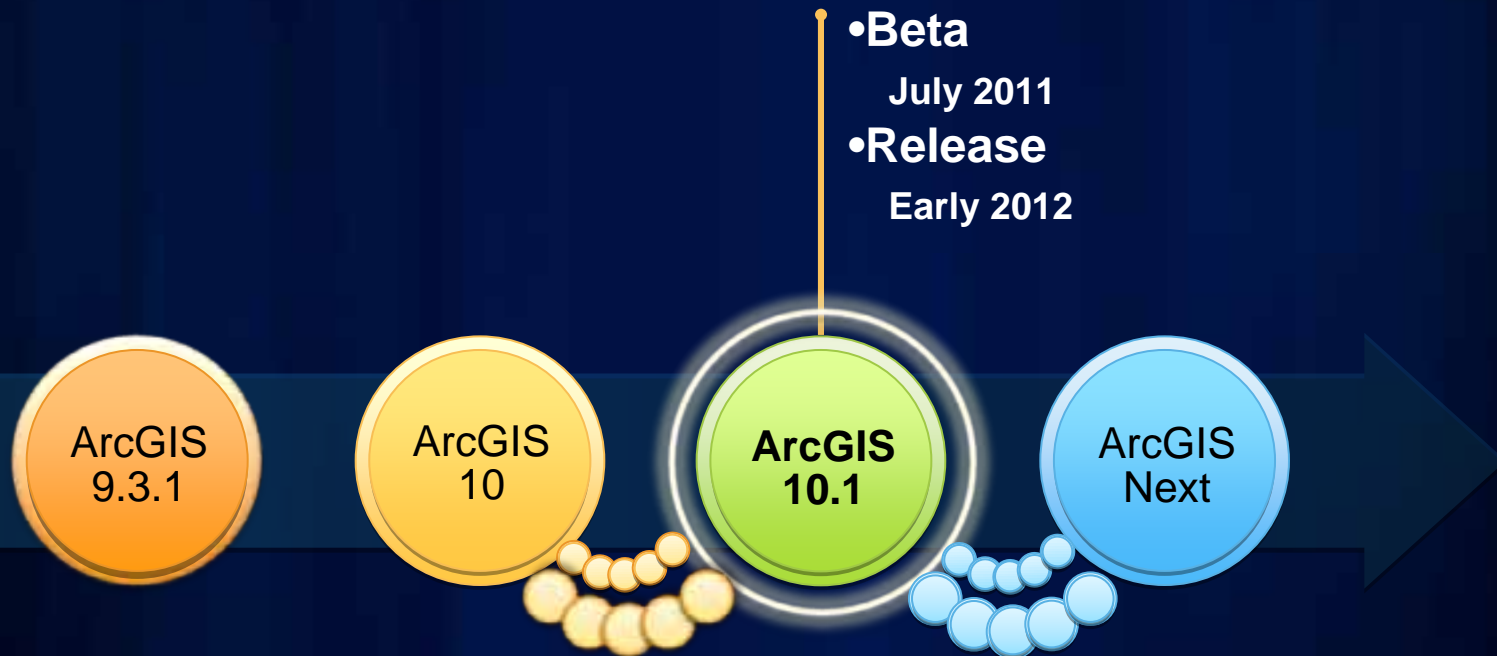


ArcGIS 10.1 Advanced GIS



Get Ready

ArcGIS 10.1 will be here sooner than you think



Sign up for Beta Now! Open to All Users!
Betacommunity.esri.com

IMPORTANT: Some stuff goes away...

The following does NOT ship with 10.1

- ArcInfo Workstation (10.0 continues to work)
- ArcIMS
- 32-bit version of ArcGIS Server
- SQL Server 2005 Support
- Visual Studio 2008 support
- Windows Server 2003 Support
- VBA*

**Thank you . . .
. . . Open Q&A**

Please submit your review of this session here:
www.esri.com/sessionevals