



**Esri International User Conference | San Diego, CA**  
**Technical Workshops |**

# **ArcGIS for Server Road Ahead**

Ismael Chivite, Anne Reuland

# Agenda

- **Vision**
- **Architecture**
- **Installation and Configuration**
- **Publishing**
- **Functional Enhancements**
- **Cloud**
- **Q&A**

# Vision

**Powerful  
GIS capabilities**



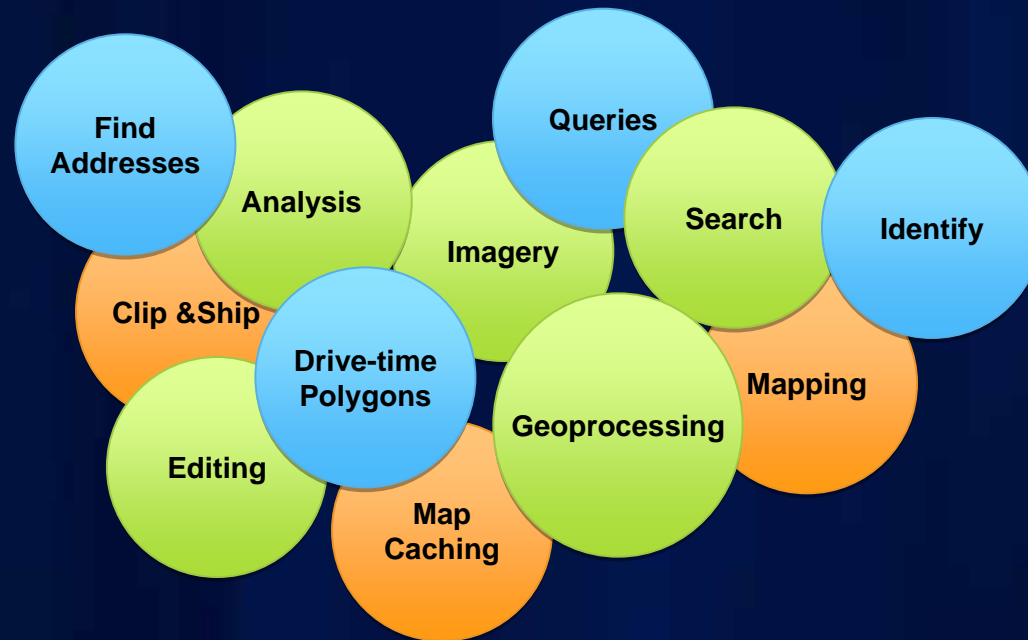
**Delivered as  
Web services**



**To help solve real problems  
by real people**



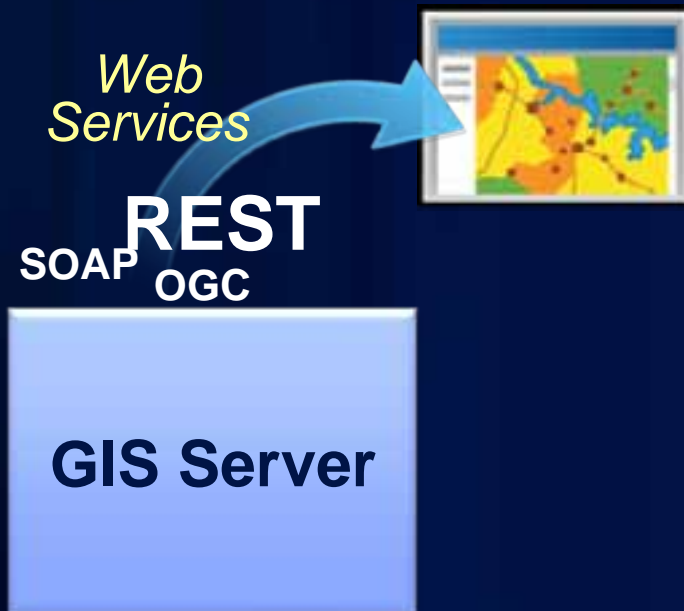
# Faster



**Native 64-Bit**

**Code optimizations**

# Simpler



**Pure GIS Services Server**  
**New Architecture**

*Admin REST API*  
*Easy to install, configure and administer*  
*Linux friendly*

DeKalb County Board

Fulton County Dept. of Health and Wellness/District 3, Unit 2, 04

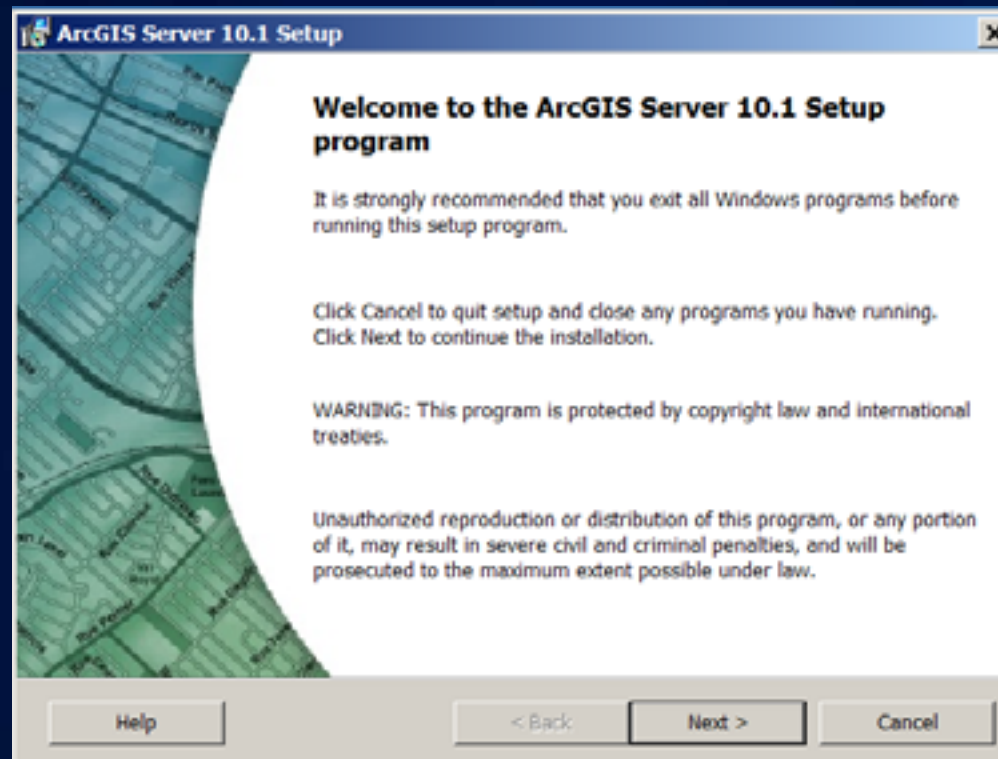
# Installing & Configuring

Simplified setup experience

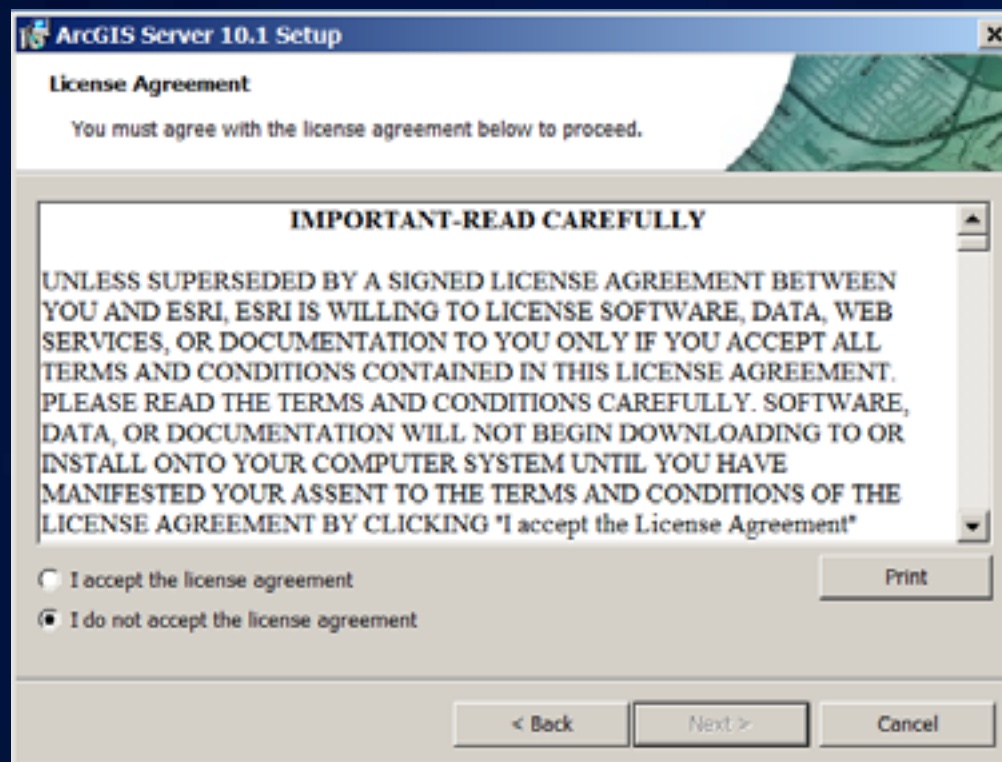


# DEMO

# ArcGIS Server 10.1 Setup — Windows



# License Agreement

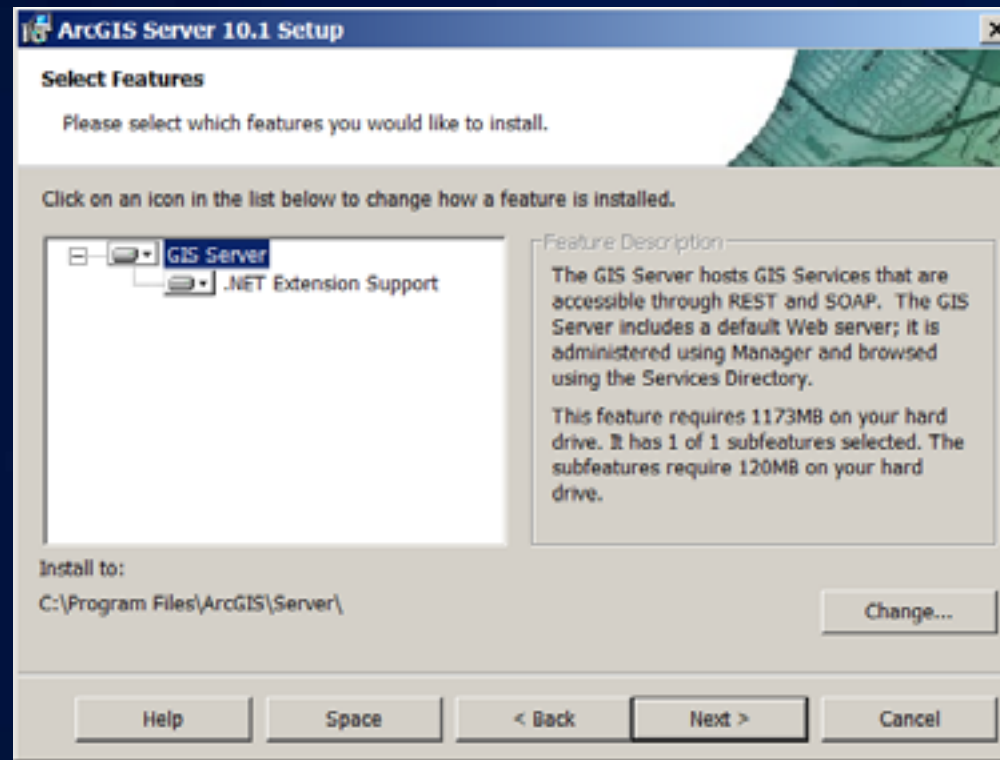




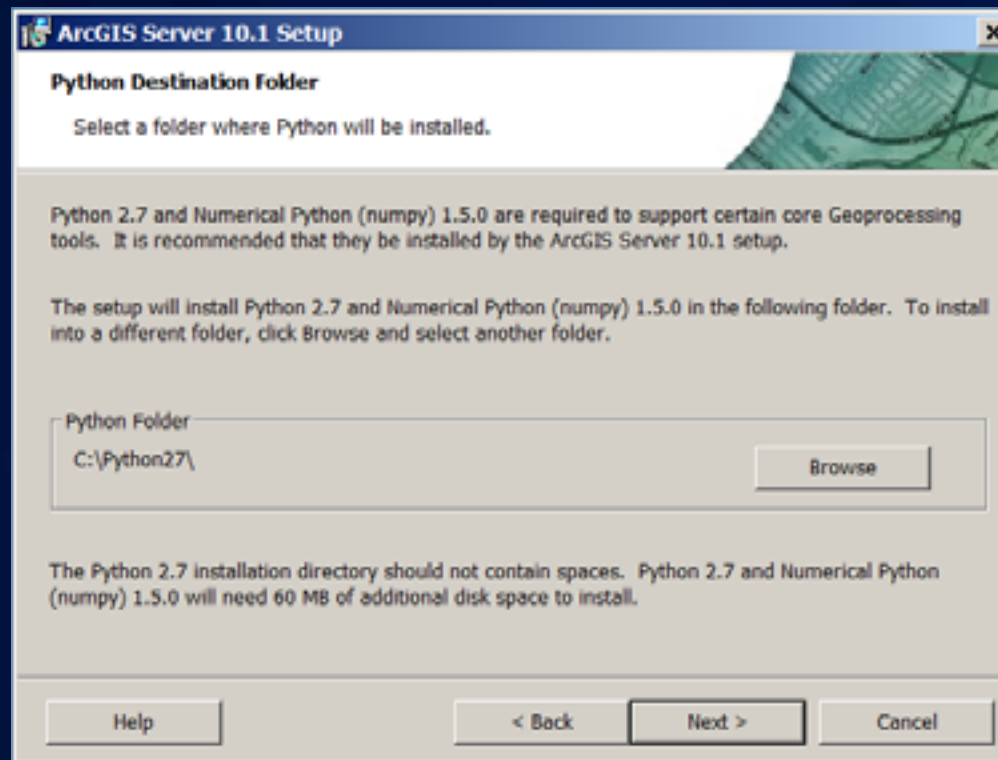
# License Agreement



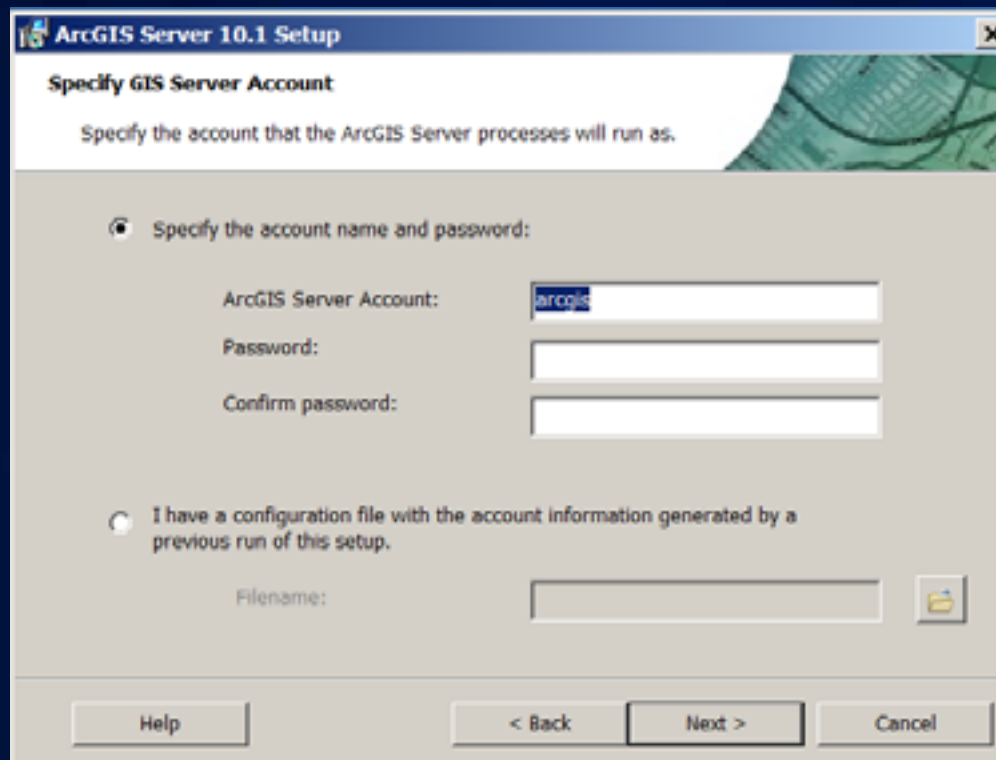
# Select Features



# Python



# Run As Account for ArcGIS Server



The image shows a screenshot of the 'ArcGIS Server 10.1 Setup' window. The title bar reads 'ArcGIS Server 10.1 Setup'. The main heading is 'Specify GIS Server Account'. Below this, a subtitle says 'Specify the account that the ArcGIS Server processes will run as.' There are two radio button options. The first option, 'Specify the account name and password:', is selected. It has three text input fields: 'ArcGIS Server Account:' with 'arcgis' entered, 'Password:', and 'Confirm password:'. The second option, 'I have a configuration file with the account information generated by a previous run of this setup.', is unselected. It has a 'Filename:' label and an empty text input field, followed by a folder icon button. At the bottom, there are four buttons: 'Help', '< Back', 'Next >', and 'Cancel'.

**ArcGIS Server 10.1 Setup**

**Specify GIS Server Account**

Specify the account that the ArcGIS Server processes will run as.

☒ Specify the account name and password:

ArcGIS Server Account:

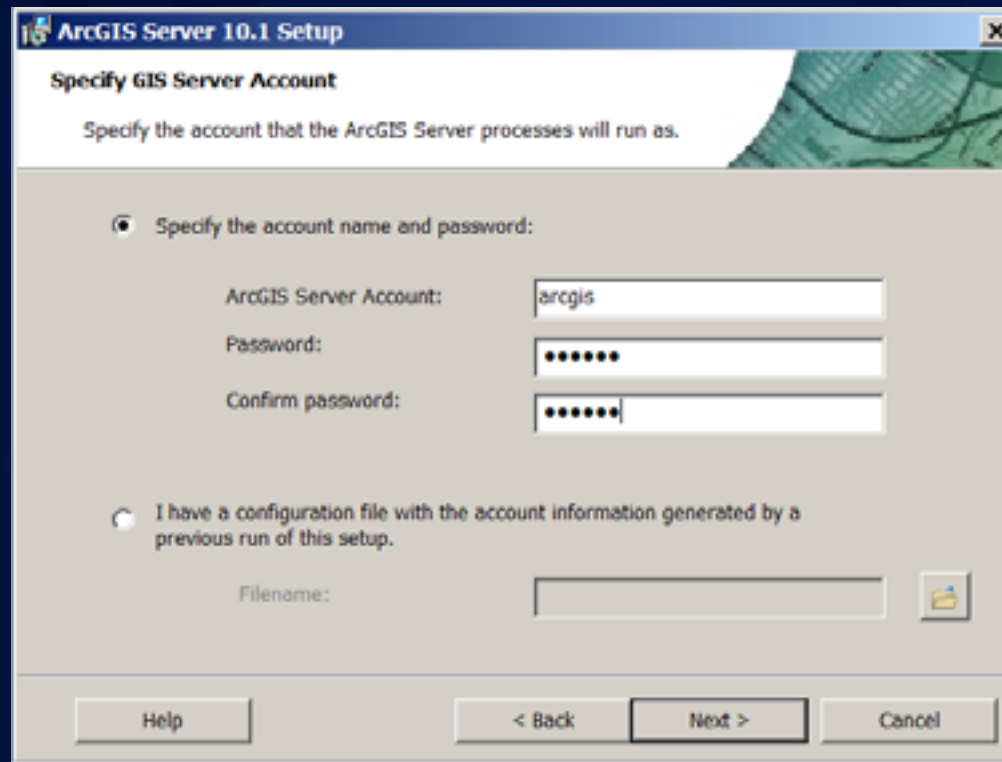
Password:

Confirm password:

☐ I have a configuration file with the account information generated by a previous run of this setup.

Filename:

# Run As Account for ArcGIS Server



The image shows a screenshot of the 'ArcGIS Server 10.1 Setup' window. The title bar reads 'ArcGIS Server 10.1 Setup'. The main heading is 'Specify GIS Server Account'. Below this, a subtitle says 'Specify the account that the ArcGIS Server processes will run as.' There are two radio button options. The first option, 'Specify the account name and password:', is selected. It has three text input fields: 'ArcGIS Server Account:' with the value 'arcgis', 'Password:' with seven dots, and 'Confirm password:' with seven dots. The second option, 'I have a configuration file with the account information generated by a previous run of this setup.', is unselected. It has a 'Filename:' label and an empty text input field, followed by a folder icon button. At the bottom, there are four buttons: 'Help', '< Back', 'Next >', and 'Cancel'.

**ArcGIS Server 10.1 Setup**

**Specify GIS Server Account**

Specify the account that the ArcGIS Server processes will run as.

☒ Specify the account name and password:

ArcGIS Server Account:

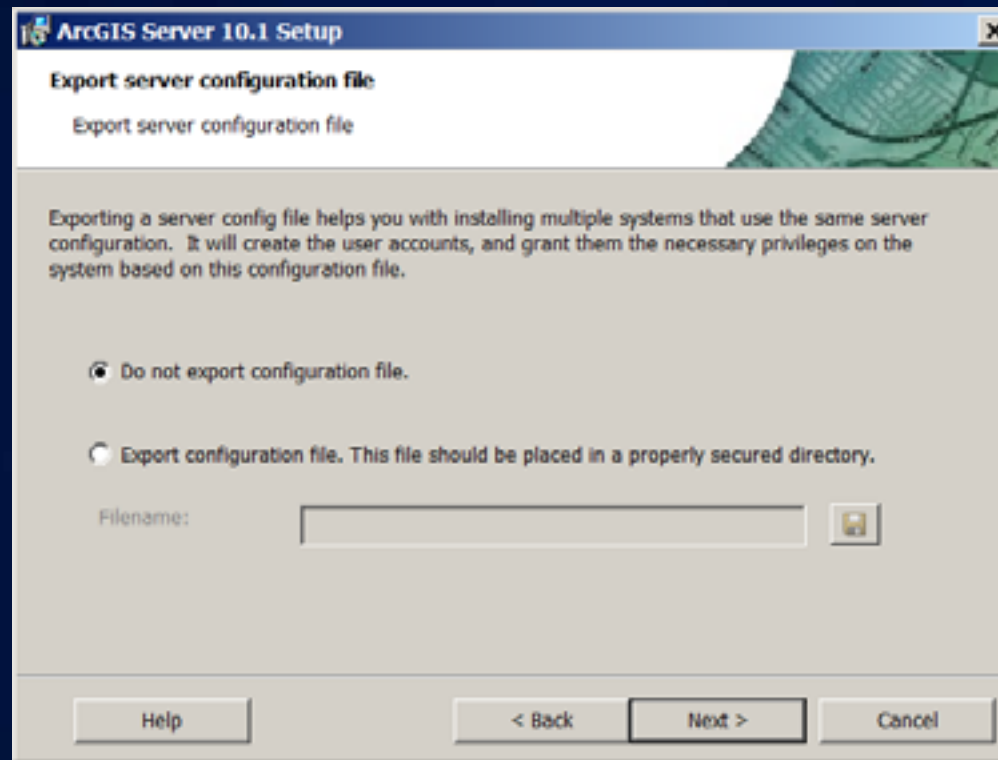
Password:

Confirm password:

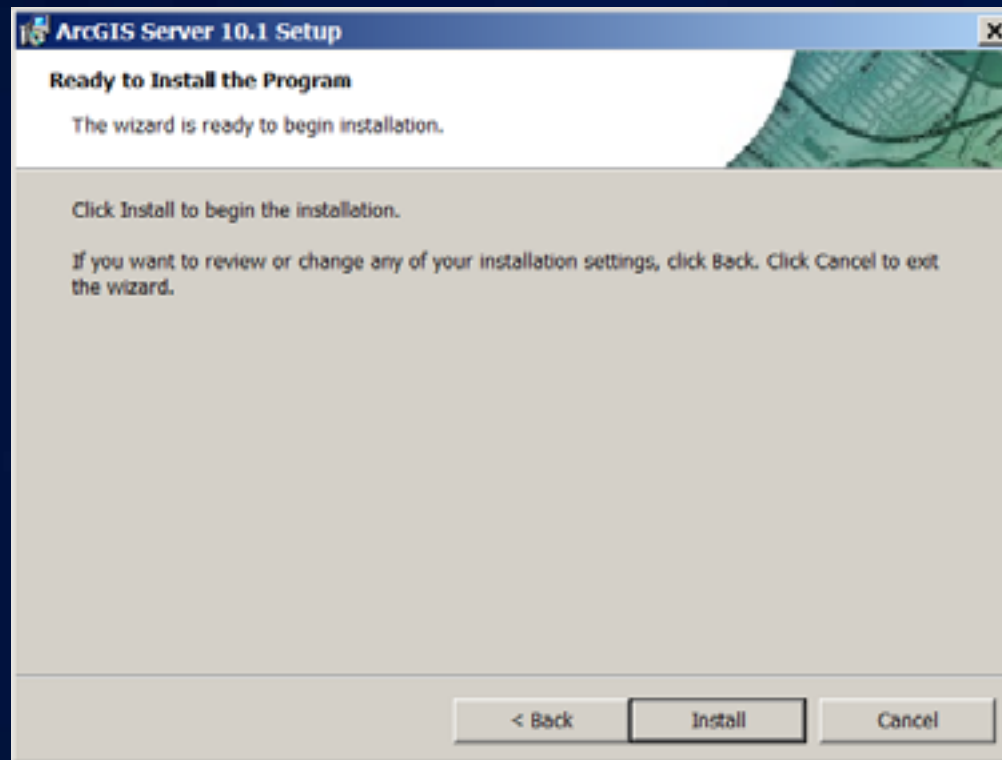
☐ I have a configuration file with the account information generated by a previous run of this setup.

Filename:

# Run As Account for ArcGIS Server



# Start install

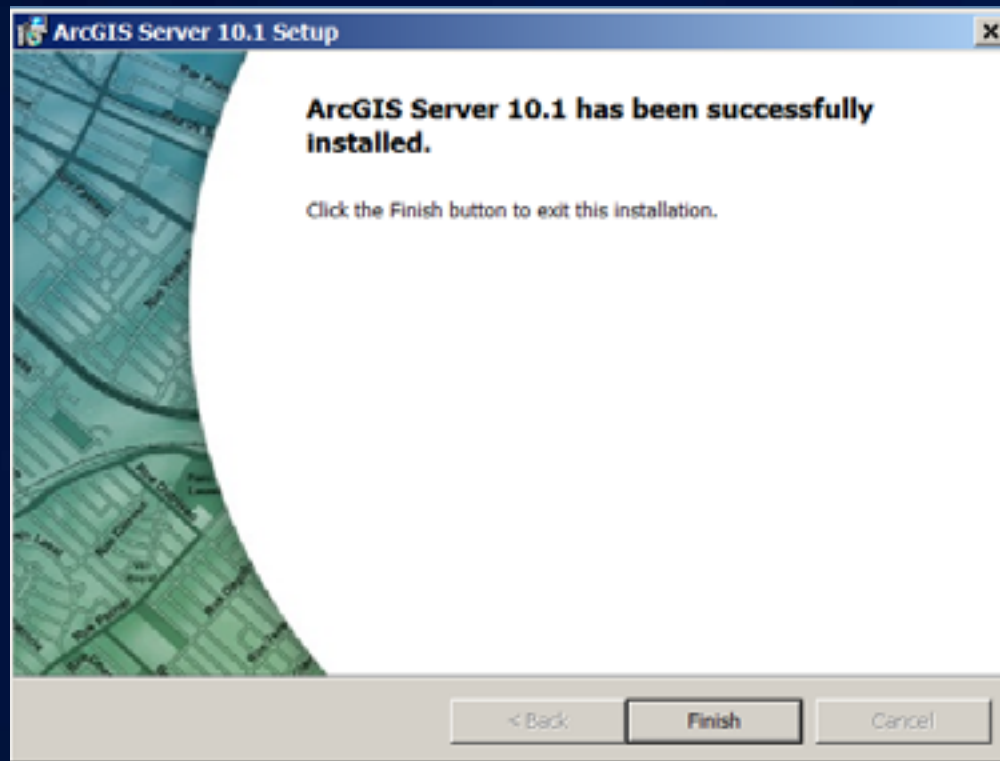


# Installing ArcGIS Server 10.1

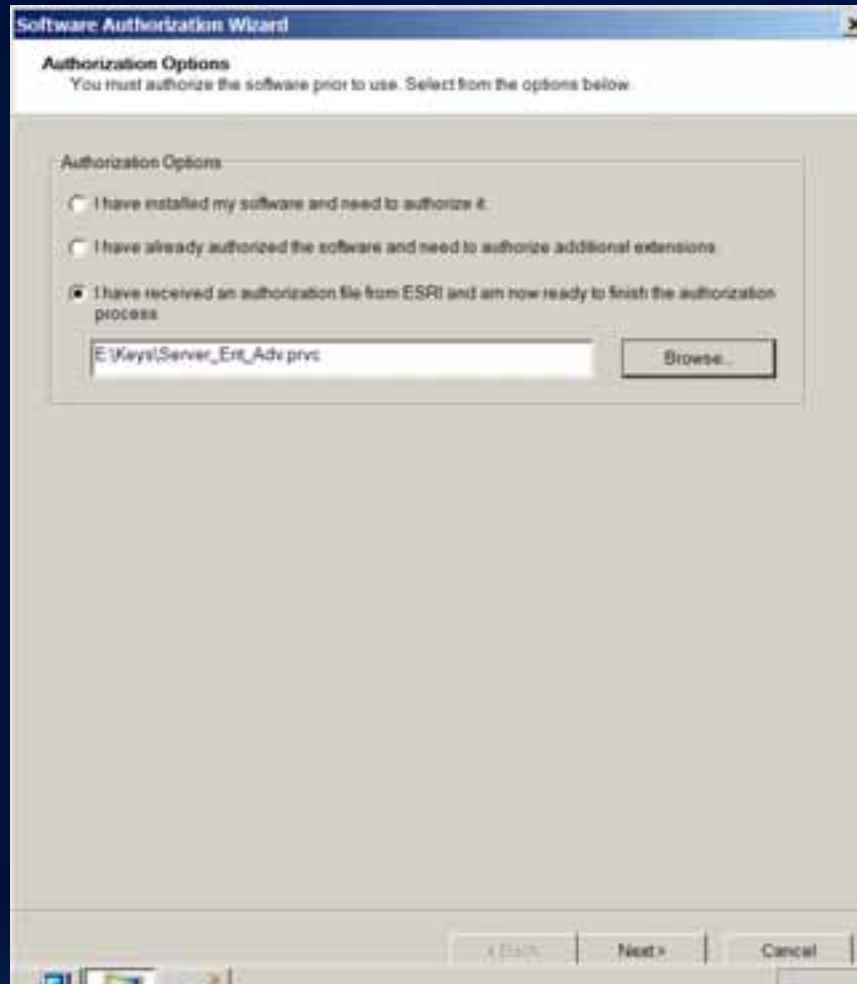
- **No install dependencies**
- **Faster setup time**
  - **Cut time in half**
  - **Setup doesn't change Windows Registry**
- **Must be 64 bit operating system**
- **Setup launches Software Authorization Wizard**
- **ArcGIS Server Manager is opened after software authorization completes**



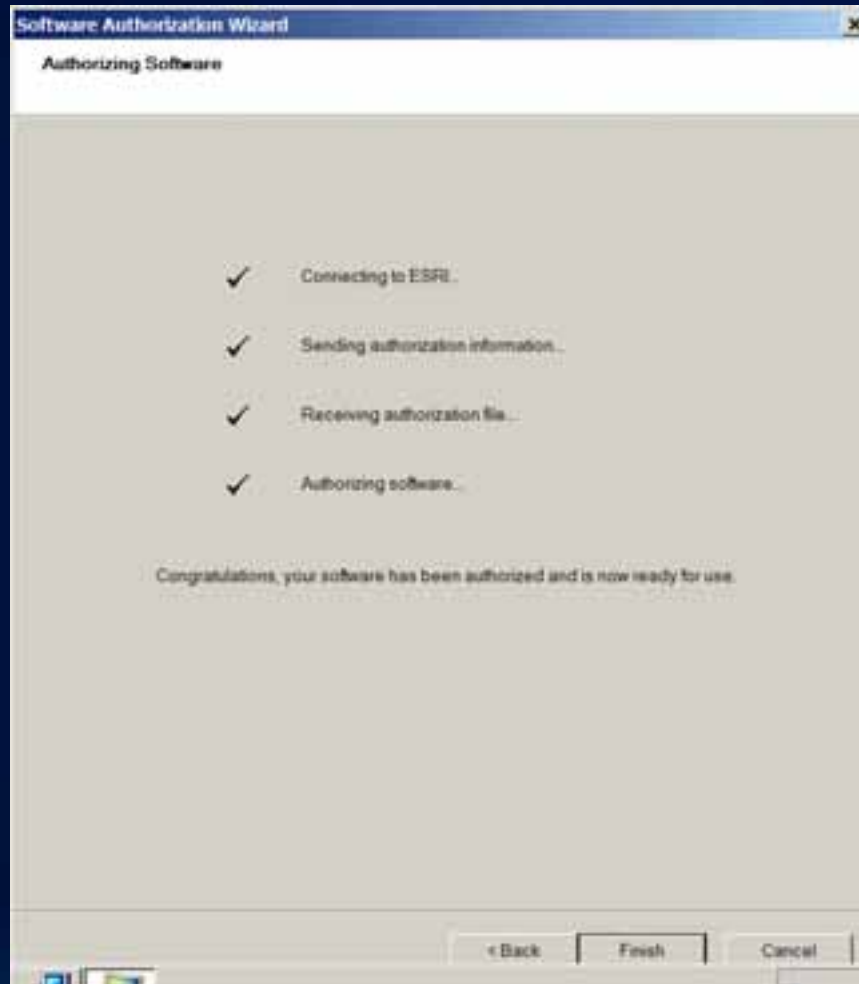
# ArcGIS Server 10.1 Setup — Windows



# Software Authorization



# Software Authorization



# Single-machine Site





DeKalb County Board

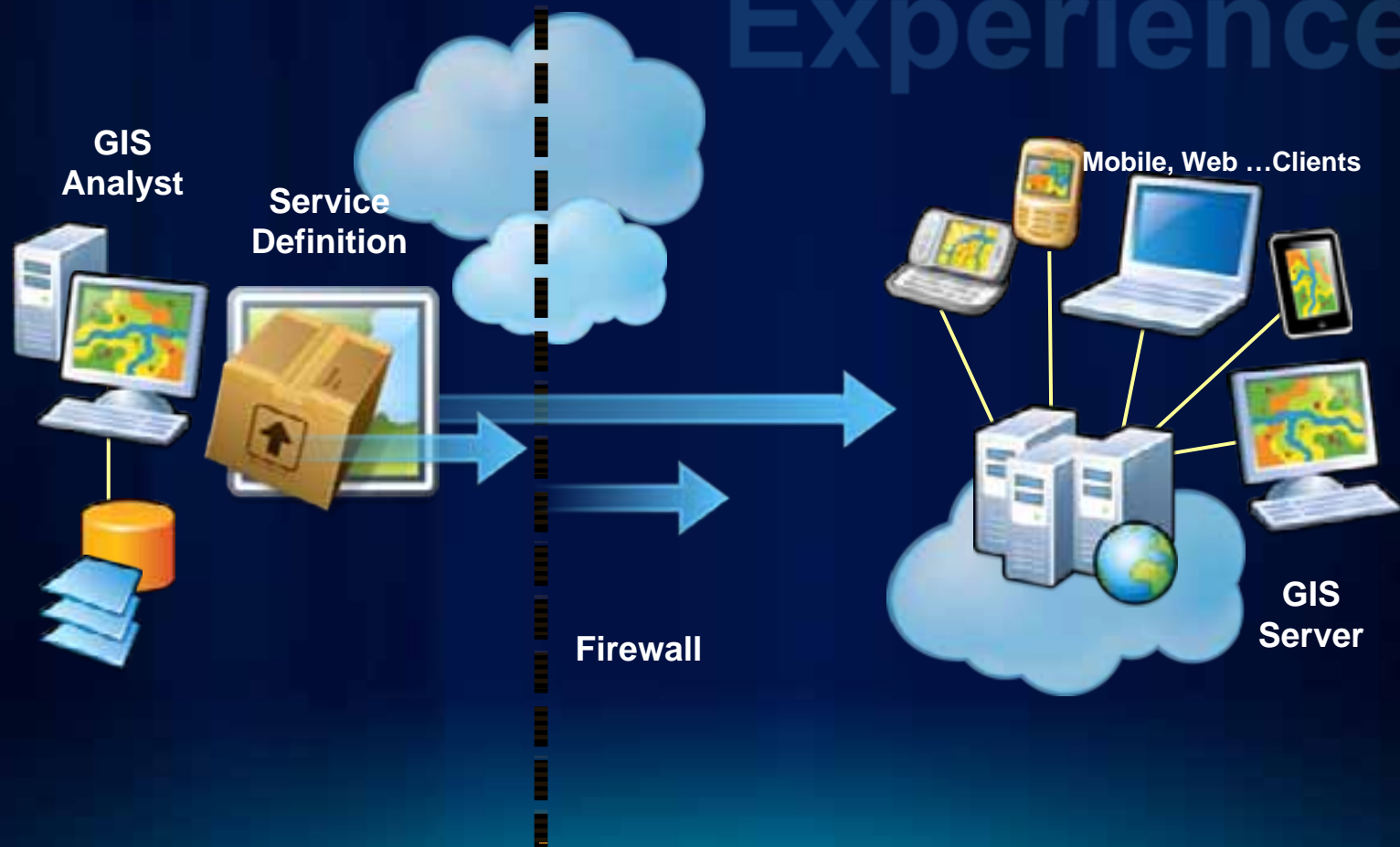
Fulton County Dept. of Health and Wellness/District 3, Unit 2, 06/11/11

# New Publishing Experience



# DEMO

# New Publishing Experience



# Functional enhancements



**Feature Services**



**Web  
printing**



**Enhanced Map  
Service**



**WMT-S, WPS  
Better caching tools  
Image mensuration...**



# Map Services

Dynamic Layers



# DEMO

# Export Web Map

On-demand high quality printing



# DEMO

DeKalb County Board

Fulton County Dept. of Health and Wellness/District 3, Unit 2, 04

# Feature Services

Ownership based data access

Edit Named Version

Roll-back on failure



# DEMO



# Other feature enhancements

Schematics

Geometric Network Tracing



# DEMO

# Other Feature Enhancements

- OGC support: WMTS and WPS
- Caching tools for Image Services
- Geometry Service: Geodesic buffer, Datum Transformations
- Feature Service: Apply edits for many layers at once

# Spatial Data Server

**Lightweight REST GIS Web Services**

**for spatially aware databases**



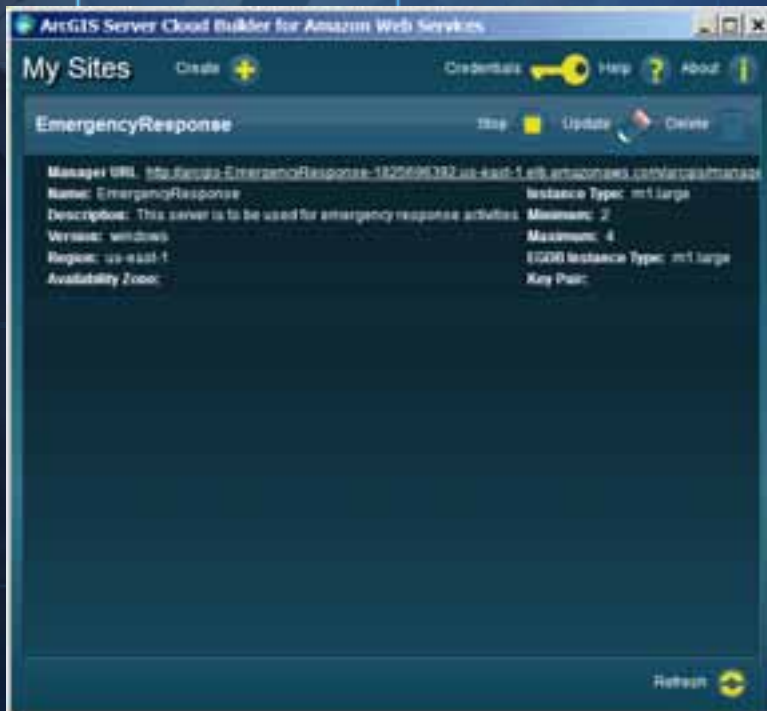
# Cloud

- Enhanced **Amazon** support
  - Linux, Async GP, Caching, Publishing, Launching
  -
- Support for **Azure**
- Private Clouds
  - Cloud burst
  - VM Ware



# ArcGIS Server Cloud Builder

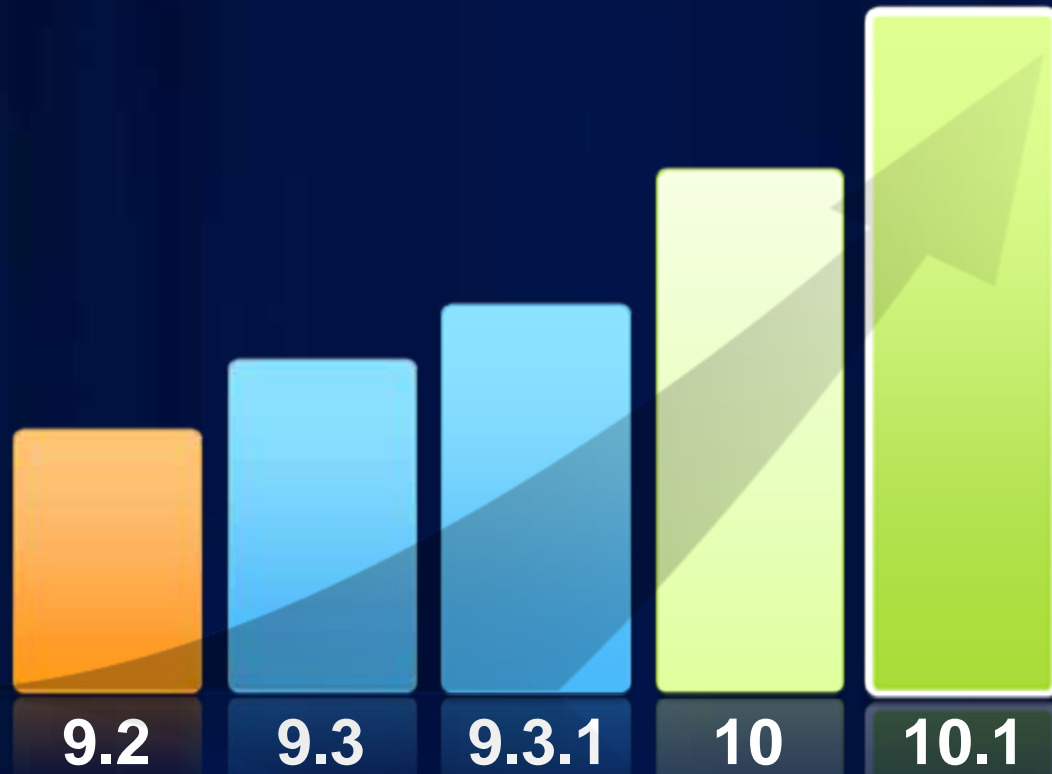
Creating ArcGIS Server Sites on Amazon



# DEMO



## ArcGIS 10.1 Server





esri