

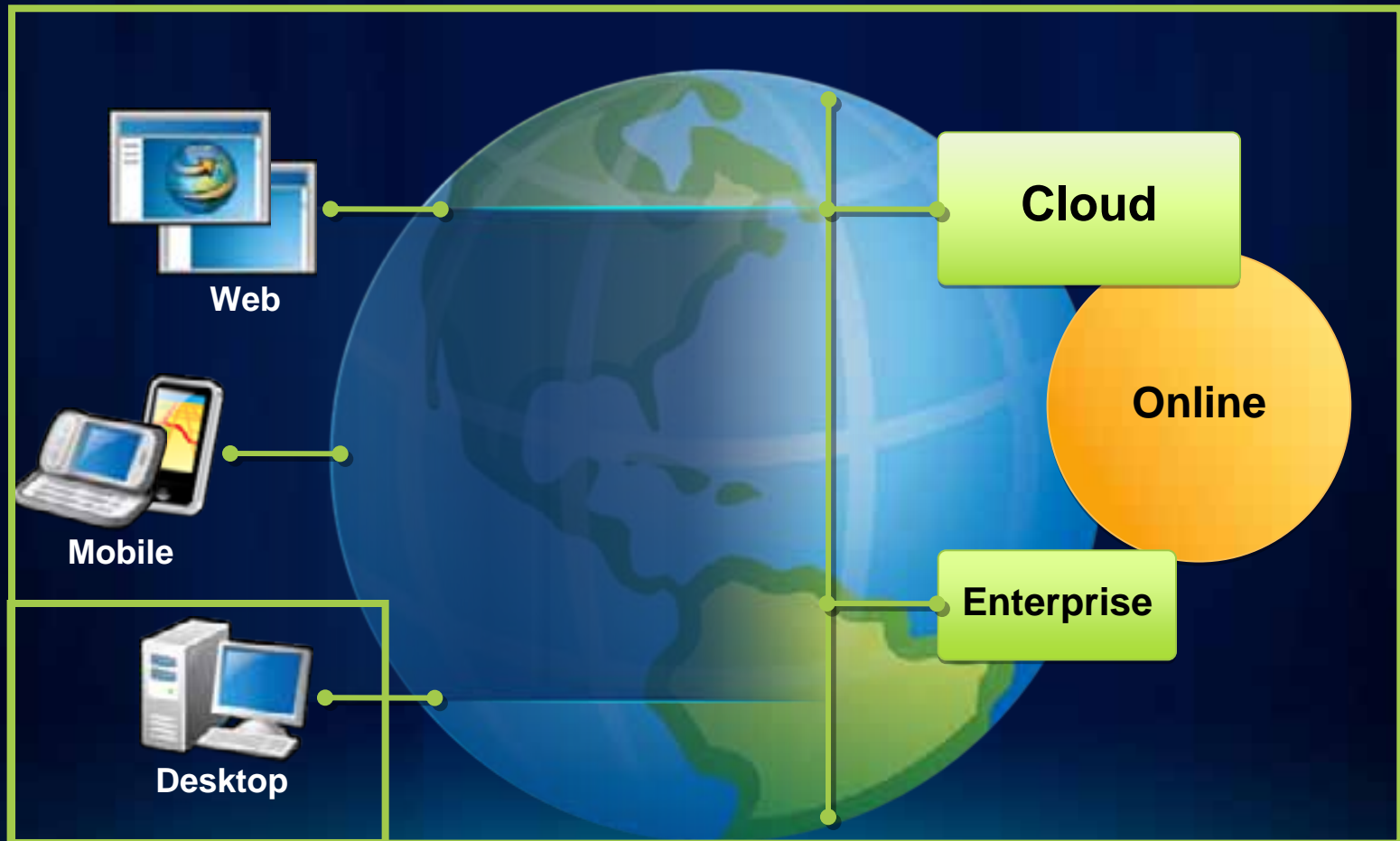


**Esri International User Conference | San Diego, CA**  
**Technical Workshops |**

# **ArcGIS for Desktop 10.1**

# ArcGIS

A Complete System for Geographic Information



# Agenda

- **Sharing Maps and Data**
- **Analysis and Geoprocessing**
- **Mapping and Visualization**
- **Editing**
- **And more**

# ArcGIS Desktop 10.1

- Builds on 10.0
- Beta 1 July \ August
- Release early 2012
- BetaCommunity.esri.com
- Review this (and all sessions)
  - [www.esri.com/sessionevals](http://www.esri.com/sessionevals)

# Sharing



# Information Sharing is Critical

Primary focus of the Desktop Team



*Transparency and easy information access are now expected...*

# Sharing as a Package

Professional to Professional



# Packaging Demo





# Sharing as Services

Professional to Everyone

# Vision

- **Make it easier to share GIS resources**
  - Unified sharing experience
  - Comprehensive Analysis
  - Sharing to servers in the cloud and to ArcGIS Online



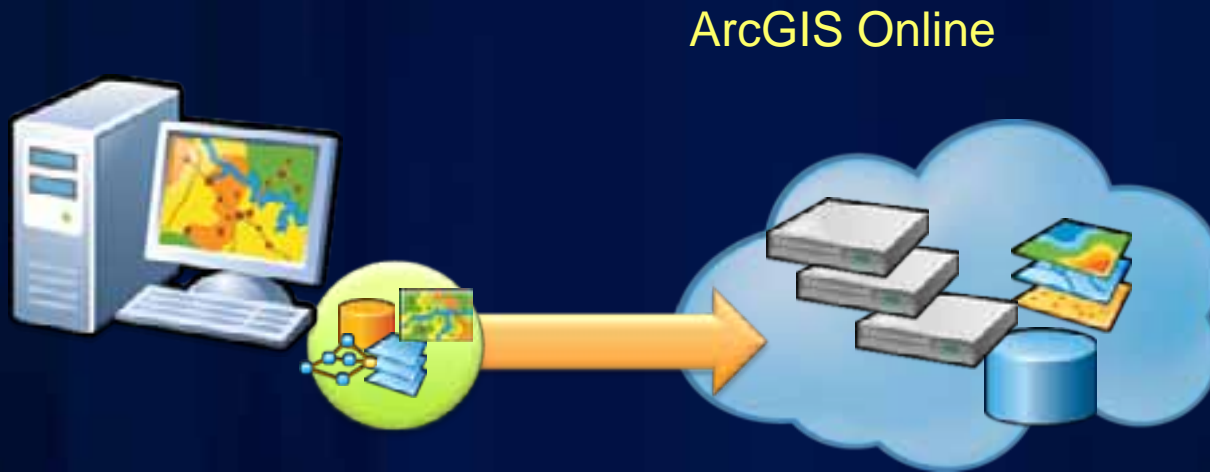
# Sharing as Services

Professional to Everyone



# Demo

## Sharing services as hosted Maps on ArcGIS Online



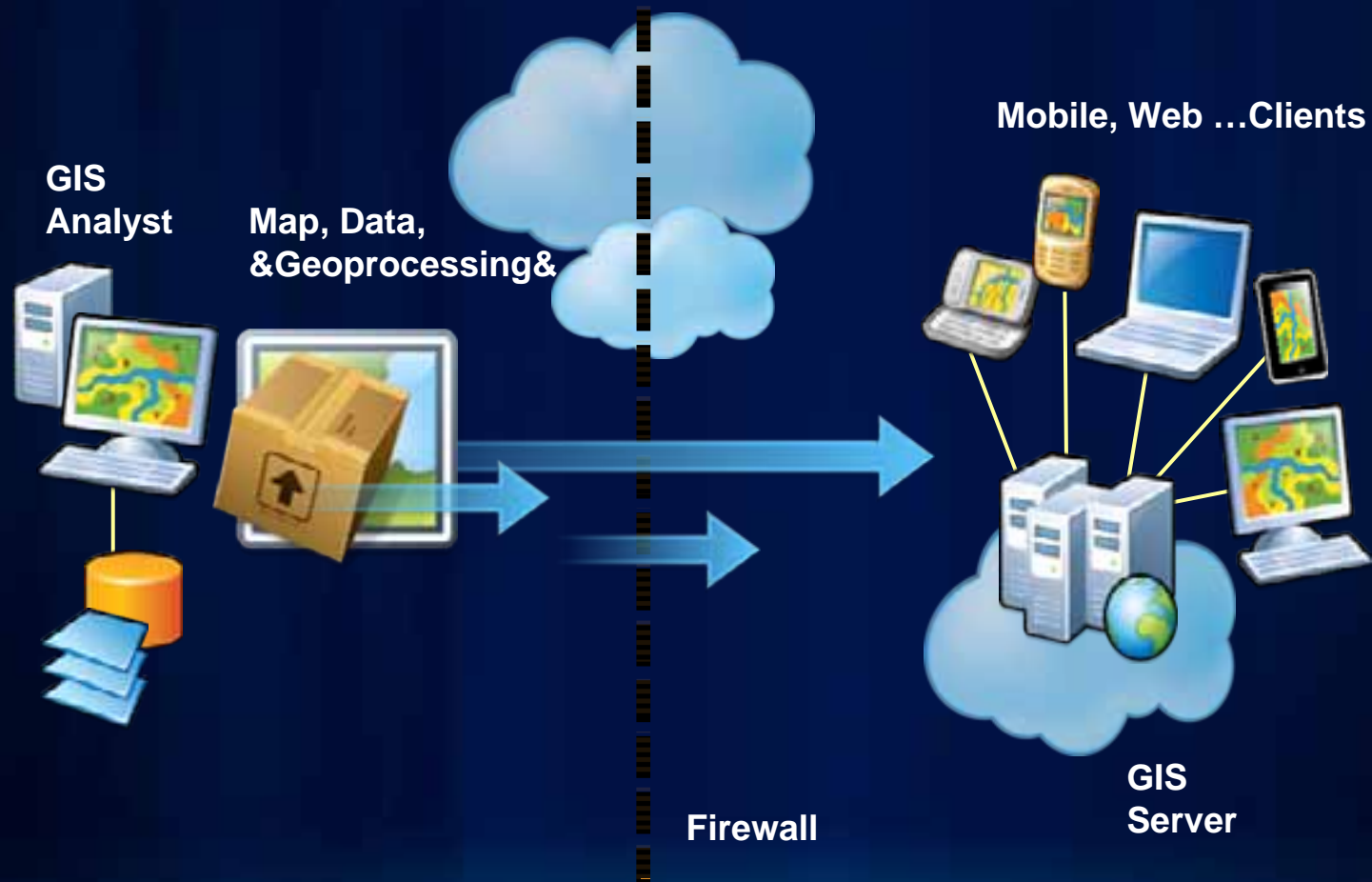
# ArcGIS Online – Hosted Mapping

Unlock the skills and knowledge of Desktop users

- Ready to use ArcGIS in the cloud
- No server installation or administration
- Access from any where



# Sharing GIS Capabilities to Cloud Servers



**Demo**





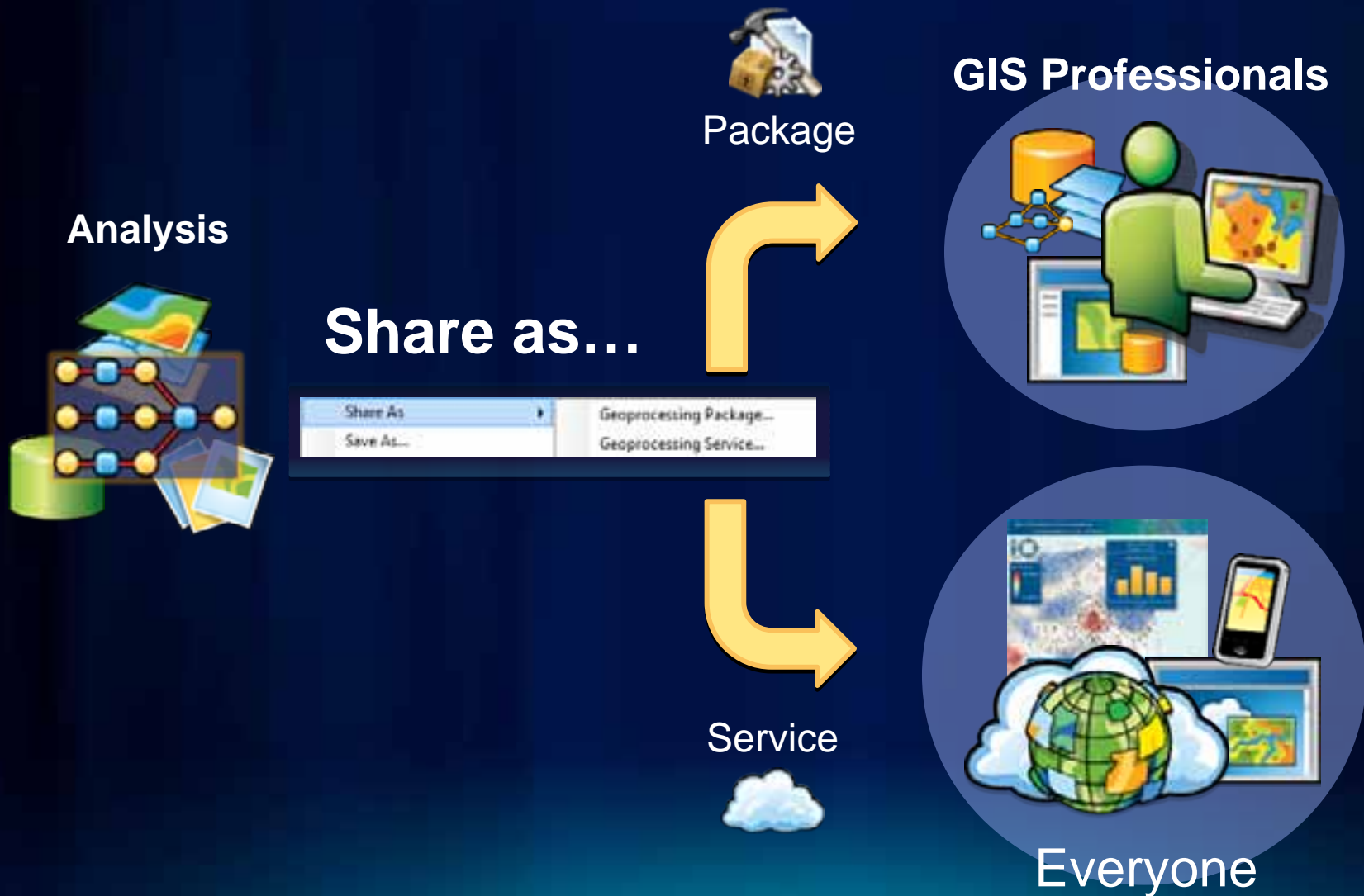
# ArcGIS Simplifies Sharing Your Work

Maps, Data, Tools, and Models . . .



*. . . Automating the Process of Creating Services*

# Sharing Analysis



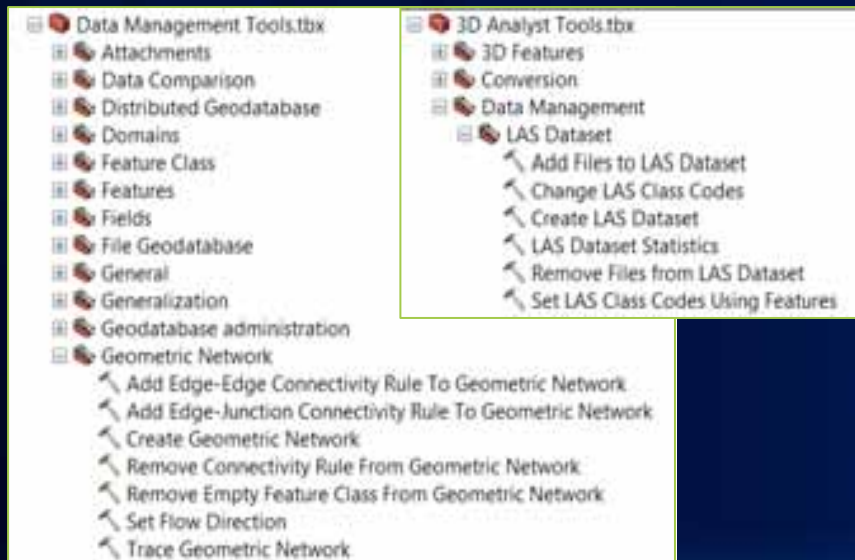


# **Sharing Analysis and Geoprocessing Demo**



# New Geoprocessing Tools

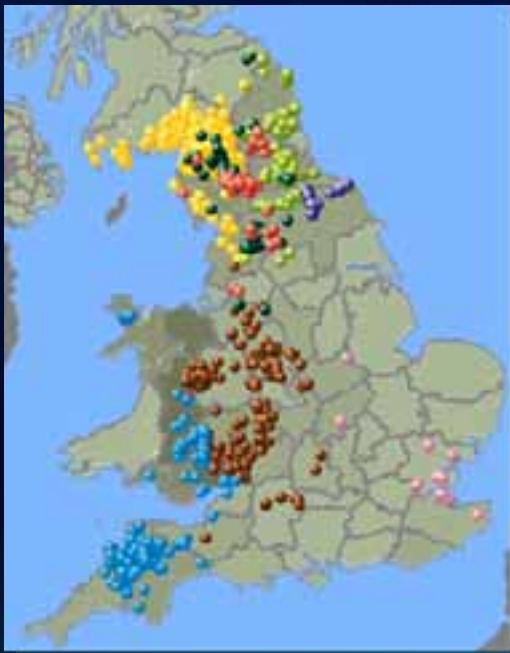
- 85 New Tools
- 117 New Parameters



# New Tools and Enhancements

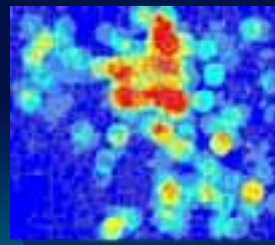
- Identify space-time clusters
- Easily identify key explanatory variables for regression analysis

Foot and Mouth outbreaks in 2001

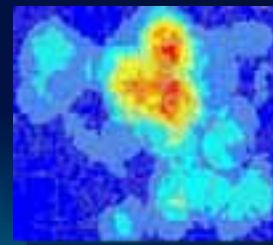


Libya Ushahidi events in space and time

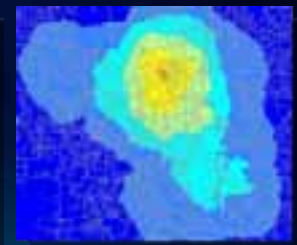
- Group similar features
- Find appropriate scale of analysis



1/4 Mile Radius



1/2 Mile Radius

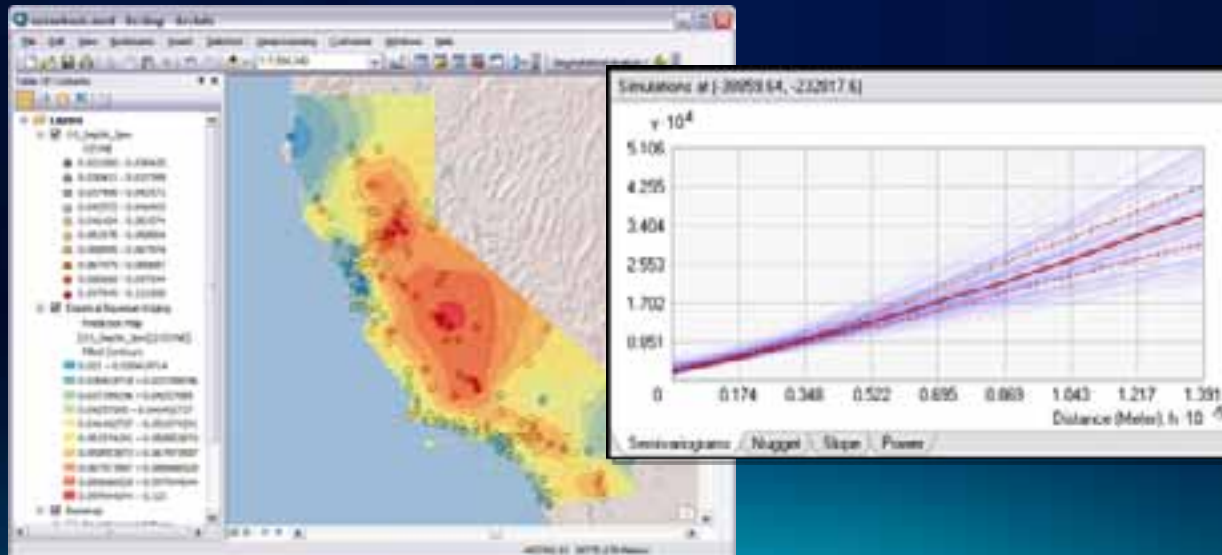


1 Mile Radius

# New Tools and Enhancements – Geostatistical Analyst

## Empirical Bayesian Kriging

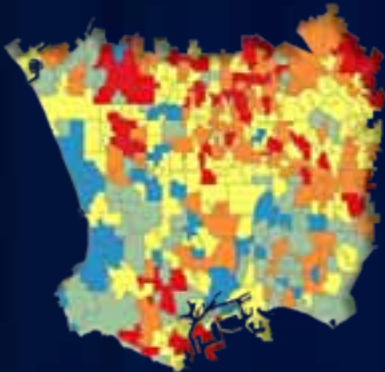
- Spatial relationships are modeled automatically
  - Very easy to use (few parameters)
  - Available as a GP tool
- Results often better than traditional kriging
- Uses local models to capture small scale effects
  - Doesn't assume one model fits the entire data



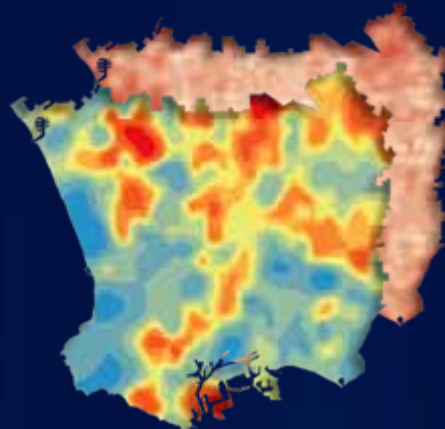


# New Tools and Enhancements – Geostatistical Analyst

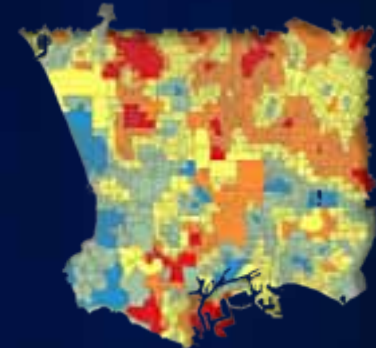
## Areal Interpolation



**Obesity by school zone**

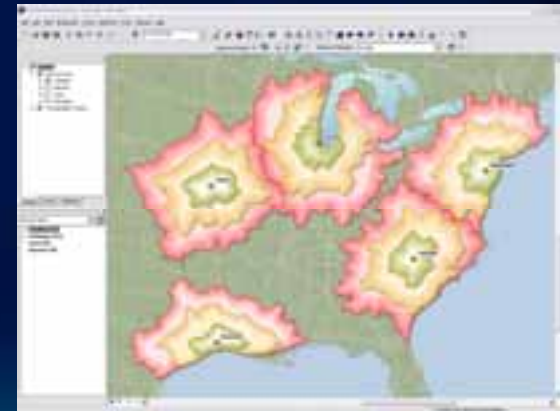


**Obesity surface and  
error surface**



**Obesity by census block**

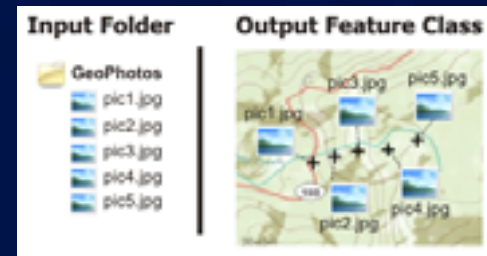
- **Cast data to a different geometry**
  - School zones to census tracts
- **Design your aggregation scheme to fit your analysis**
- **Model and fill-in missing data**



# New Tools and Enhancements

- **Easier to work with GPS data**

- GPX to Layer
- GeoTagged Photos To Points
- Match Photo To Row By Time



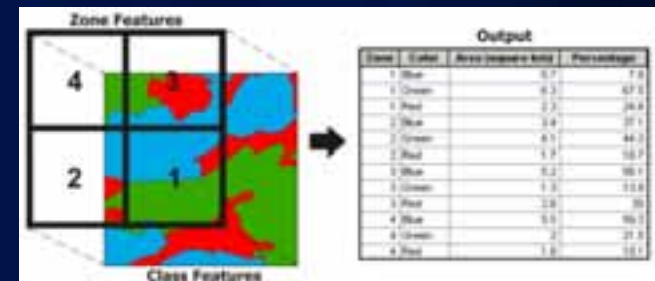
Geotagged Photos To Point

- **Better KML experience**

- KML to Layer, Layer to KML

- **Easier to do complex workflows**

- Tabulate Intersection
- Polygon Neighbors



Tabulate Intersection

- **More Accurate Buffering (geodesic)**

# Geoprocessing Demo



# Python Improvements

- **Network Analyst Module**
  - Automate NA workflows through Python
- **Data Access Module**
  - Fast cursor performance
  - Edit operations
  - Geometry operators
- **Python Toolboxes**
  - Easier for python developers to create tools
  - Create tools outside of desktop
- **Python Add-ins**
  - Extend desktop functionality with Python



# Python Demo



# ROAD AHEAD SESSIONS

## Road Ahead - Sharing of Analysis

Wednesday July 15<sup>th</sup>    11:05AM 11:25AM    6 B

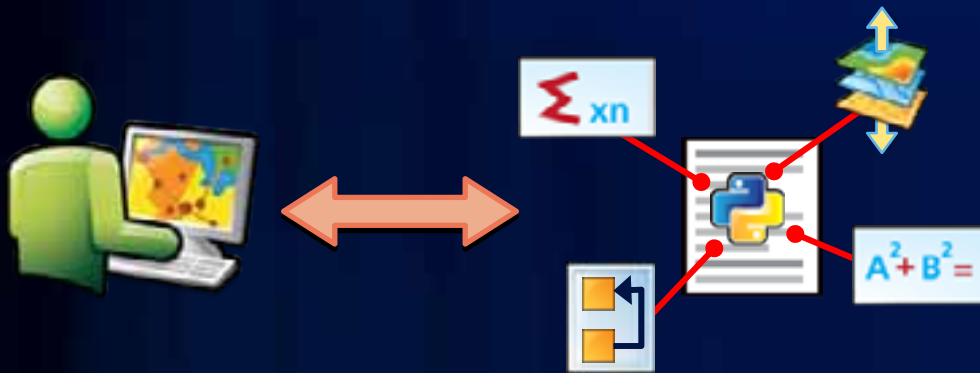
## Road Ahead - Python Scripting Abilities

Thursday, July 14<sup>th</sup>,    4:05PM 4:25PM    6 B

## Road Ahead - Analysis Capabilities

Thursday July 16<sup>th</sup>    3:40PM 4:00PM    6 B

# Developer



Python Scripting for  
automation and scientific task



Python .NET or Java Add-Ins  
Simple to build and share



ArcObjects SDK  
Visual Studio 2010

## **What about VBA?**

- **No VBA ArcObjects SDK**
- **VBS support only for legacy solutions**
- **Start your migration now**

# Mapping and Visualization



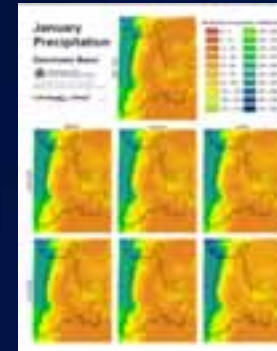
# Mapping and Visualization

*Enhancing the functionality from 10*

Dynamic legends



More Python scripting



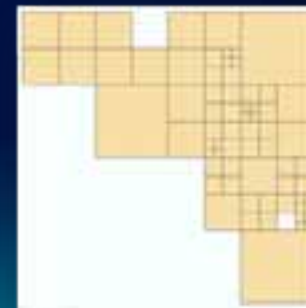
Additional layer types in basemaps



Time live mode



Large data set generalization



# Mapping Improvements

## Layout



Property Use	
	Ag - Vacant lot (R)
	Cash grain/growing farm (T)
	Commercial Other structure (T)
	Commercial milk warehouse (T)
	Industrial small shops (T)
	One Family Dwelling Platred (C)
	Recre - Vacant Platred lot (R)
	Small retail (T)
	Buildings (T)



## Coordinate Systems



## Symbology



## Labeling



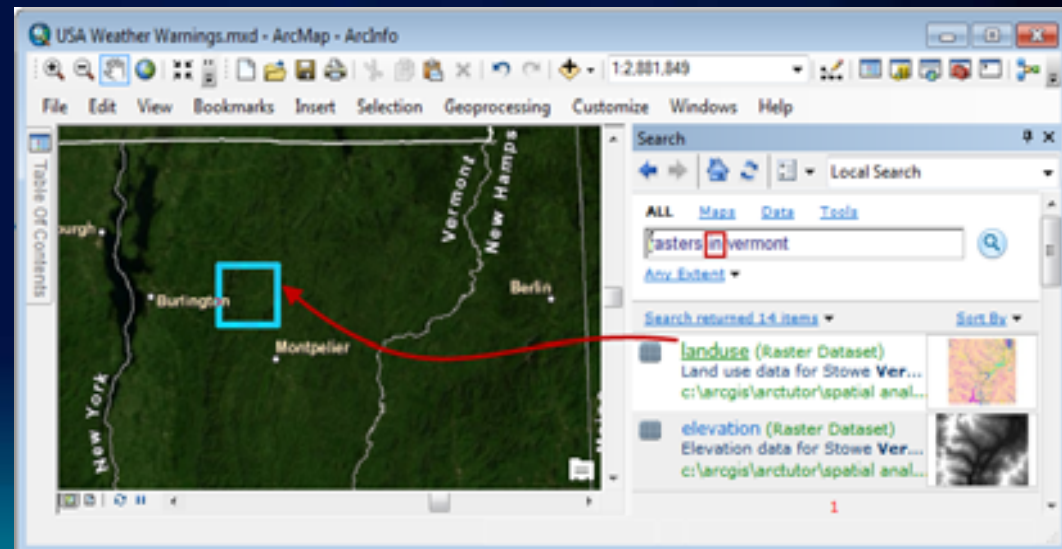
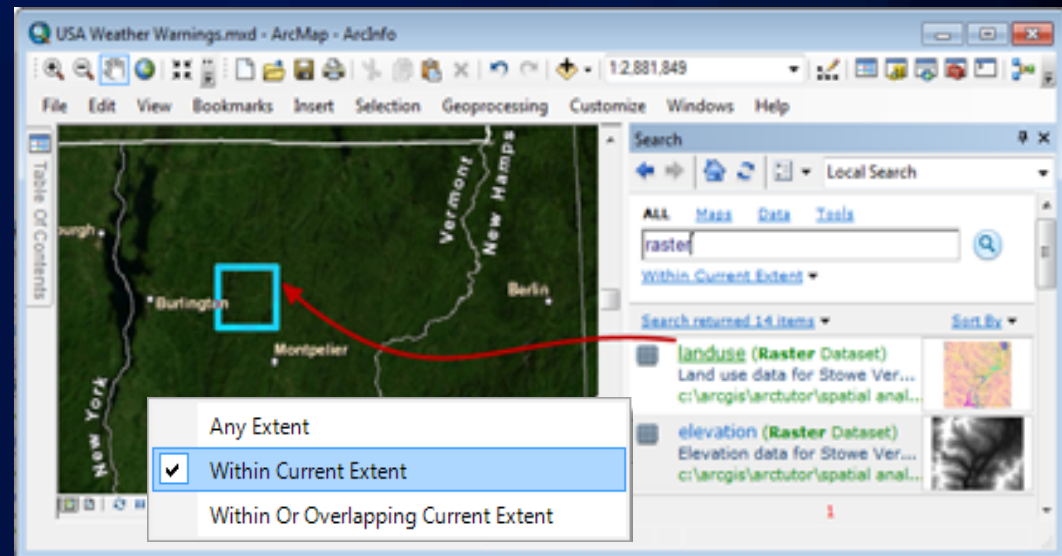
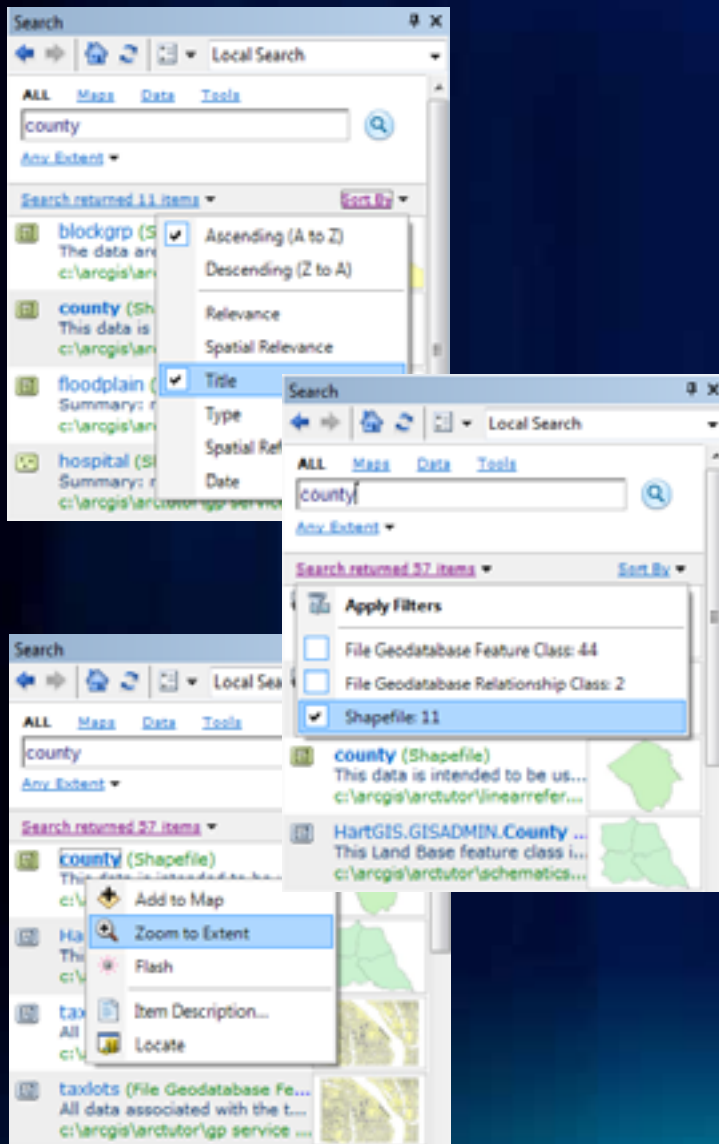


# Mapping Demo





# New in Search at 10.1



# Editing



# Editing: Auto-Populated Fields

- Tracks who's editing what and when
  - Created by user and time
  - Last updated by user and time
- Popular custom tool and common enhancement request

*Continued improvements to support best practices*

# Editing of Integrated Datasets

- **Many “traditional” GIS domains have continuous data**
  - Forestry, geology, land use, etc.
- **Improve data quality**
  - Align data to resolve inconsistencies
  - Allow reshaping of multiple edges at same time
  - Enable recapture of existing geometry

*Simplify user experience for maintaining integrated data*

# Editing Demo



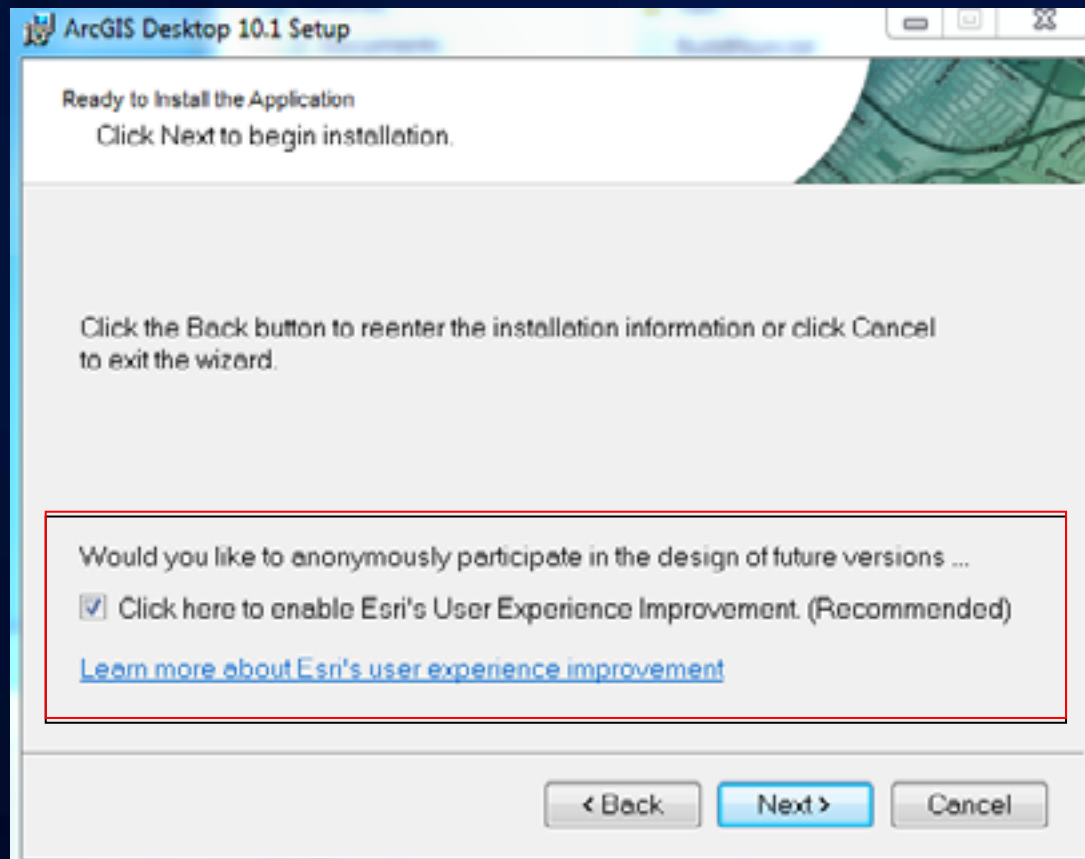
**Beta**



# Beta

- **Coming Soon**
- **<http://betacommunity.esri.com>**
- **Better forums, task, journals and bug reporting**

# User Experiences Improvement Program





# Name Change

Name Prior to 10.1	New Name
ArcGIS Desktop	ArcGIS for Desktop
ArcInfo	ArcGIS for Desktop Advanced
ArcEditor	ArcGIS for Desktop Standard
ArcView	ArcGIS for Desktop Basic

# License Upgrading

- **New simpler, automated process to upgrade licenses to 10.1**
  - **Uninstall 10.0 without de-authorizing any licenses**
  - **Install 10.1**
  - **Wizard will help you automatically upgrade licenses to 10.1 (internet required)**
- **No need to enter new authorization numbers**
- **Single and Concurrent Use**
- **10.0 can use a 10.1 License Manager**

# Desktop Product Changes

- **No ArcInfo Workstation at 10.1**
  - 10.0 Continues to work with
- **No SQL Server 2005 Support**
- **No Visual Studio 2008**
- **No VBA ArcObjects SDK**

# Thanks!

- Session evaluations online
- [www.esri.com/sessionevals](http://www.esri.com/sessionevals)



esri