



**Esri International User Conference | San Diego, CA**  
**Technical Workshops | July 11 – 15, 2011**

# **Road Ahead – ArcGIS Workflow Manager**

Raghavendra Sunku  
Tope Bello

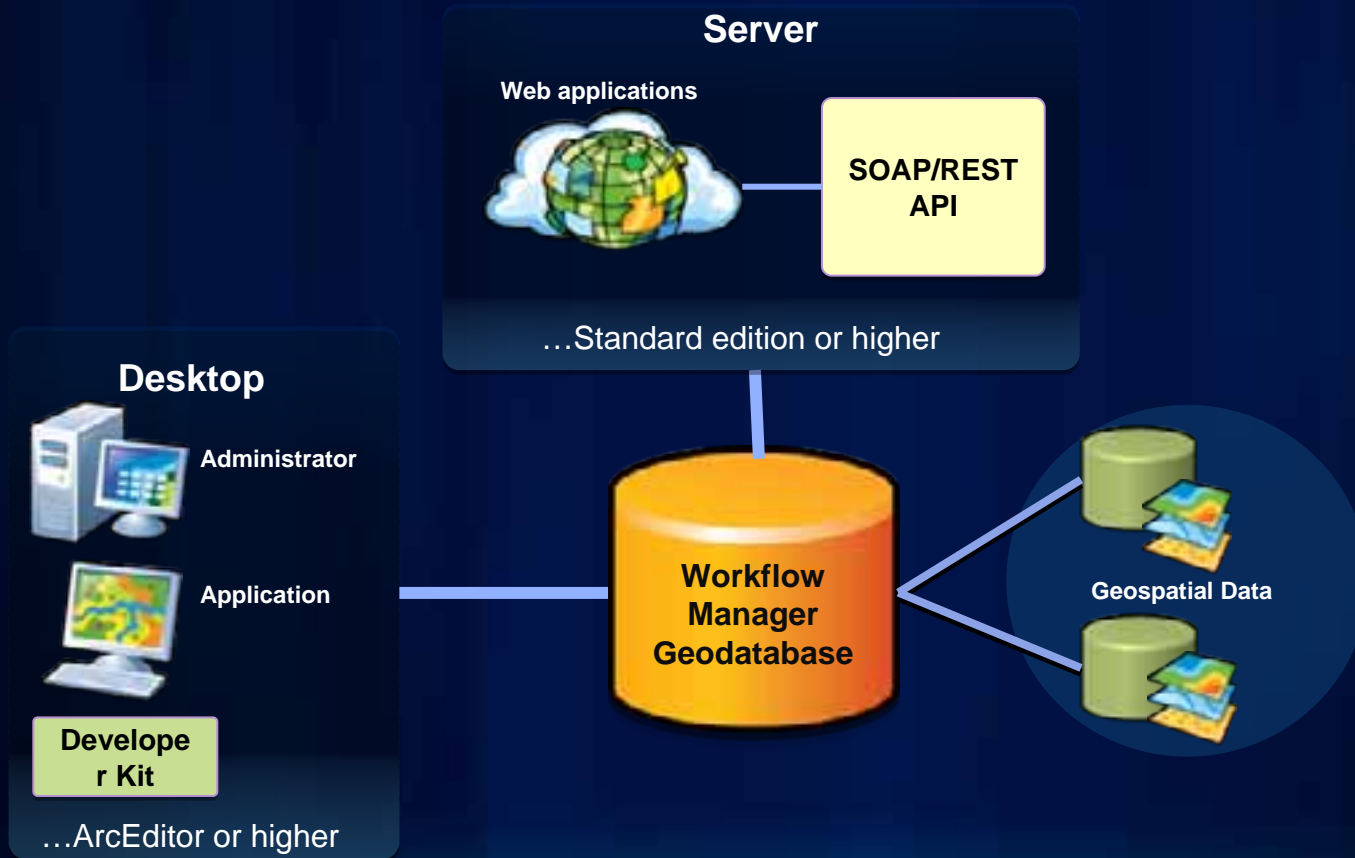
# Session Topics

- **What is ArcGIS Workflow Manager**
- **Workflow Enhancements**
  - Workflow Automation
  - Sharing Workflow Packages
- **Security Enhancements**
  - Fine-grained Security
  - Secure SMTP
- **Productivity Tools**
- **Server-side Enhancements**
  - REST and Web API
  - Out-of-the-box Web Applications



# What is ArcGIS Workflow Manager

Complete GIS management functions in one product



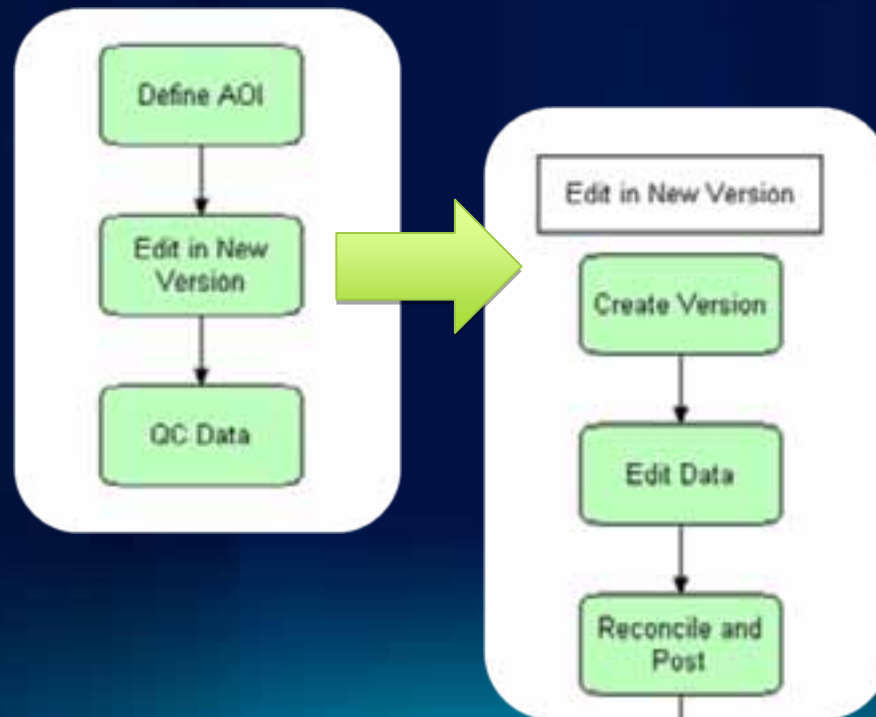
Right work completed the right way, at the right time, by the right person

# Road Ahead - ArcGIS Workflow Manager Enhancements



# Workflow Automation

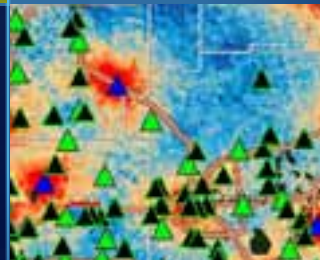
- Embed workflows within a workflow
  - Rollback framework for sub-workflows
- Intelligent automatic step execution
- Automatic execution at job creation



DeKalb County Board

Fulton County Dept. of Health and Wellness/District 3, Unit 2, 04/11/2011

# Workflow Automation Demo



# Sharing Workflow Packages

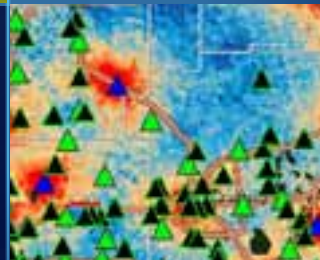
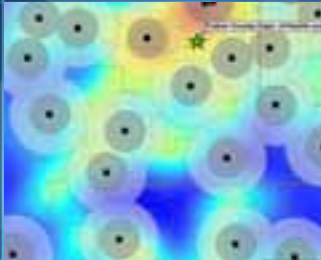
- **Create Workflow Packages in Workflow Manager Administrator**
  - Job type + Workflow + Step type + Map + more
- **Publish to ArcGIS.com**



DeKalb County Board

Fulton County Dept. of Health and Wellness/District 3, Unit 2, 04/10/10

# Sharing Workflows Demo

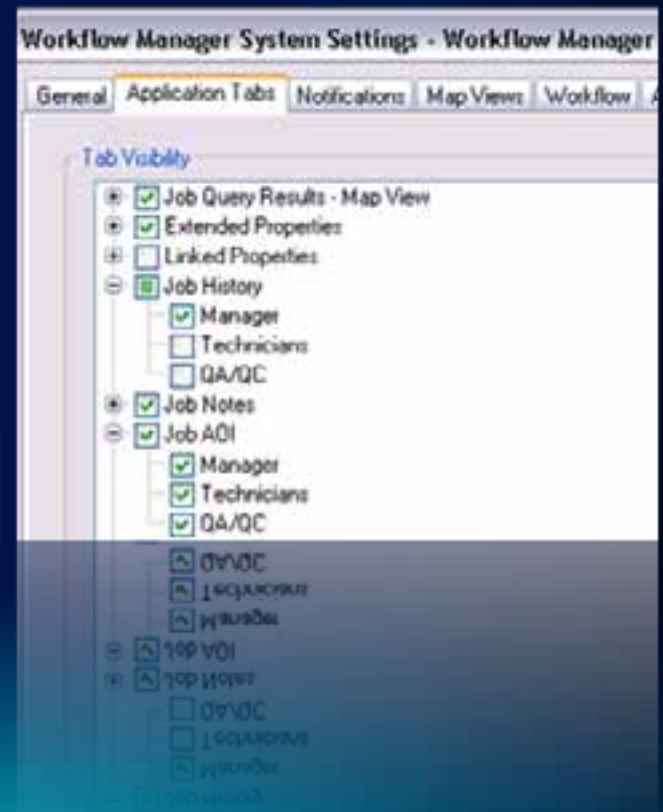




# Fine-grained Security

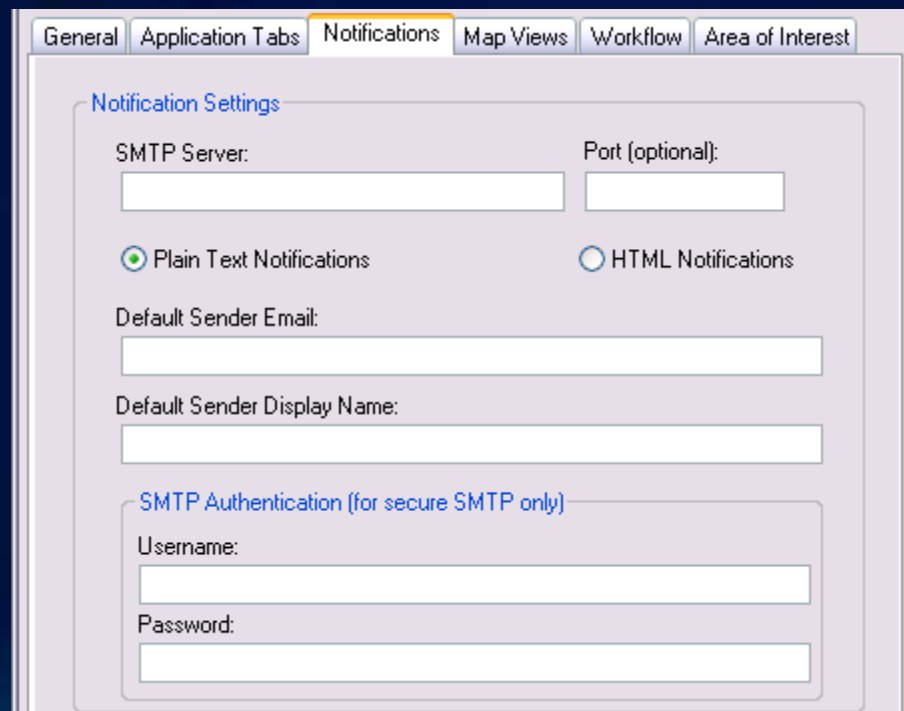
- **Restrict or grant access to detailed parts of Workflow Manager**
  - **Control Job Panel visibility by Groups**
  - **Additional Privileges**

CanSubscribeToNotifications	User can subscribe to job and spatial notifications
CanUpdatePropsForHeldJobs	User can override a hold to modify properties on a
CanUpdateUserProfile	User can update their user profile information.
CanUseUserProfile	User can use their user profile information.



# Secure SMTP

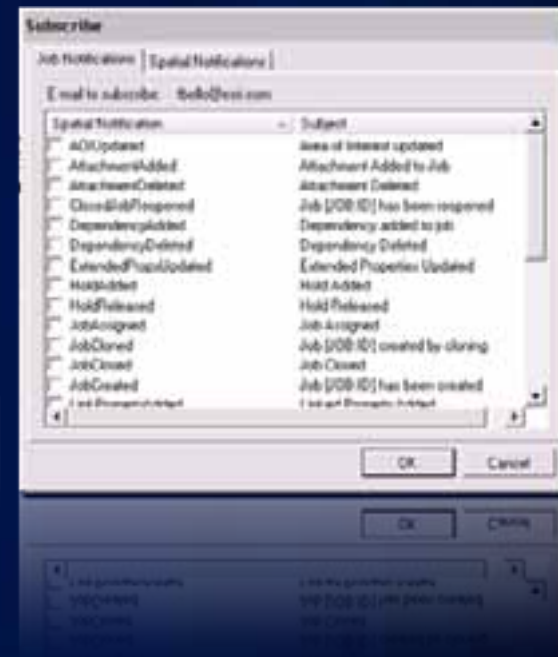
- **Use a secure SMTP server to send your Job and Spatial notifications**
  - For example: Gmail or Yahoo Small Business Server
- **Build and configure your custom notification engine**



The screenshot shows a software configuration window with several tabs: 'General', 'Application Tabs', 'Notifications' (which is selected), 'Map Views', 'Workflow', and 'Area of Interest'. The 'Notifications' tab contains a section titled 'Notification Settings'. Within this section, there are two input fields for 'SMTP Server:' and 'Port (optional):'. Below these are two radio buttons: 'Plain Text Notifications' (which is selected) and 'HTML Notifications'. Further down are two more input fields for 'Default Sender Email:' and 'Default Sender Display Name:'. At the bottom, there is a sub-section titled 'SMTP Authentication (for secure SMTP only)' which contains two input fields for 'Username:' and 'Password:'.

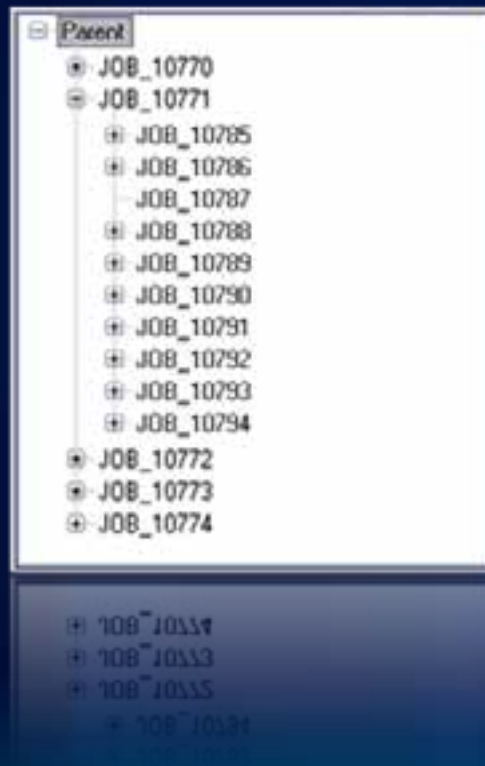
# Productivity Tools

- Free text search for Jobs
- Manage your own profile and notification subscriptions
- Re-open closed Jobs
- Re-create Job Workflow

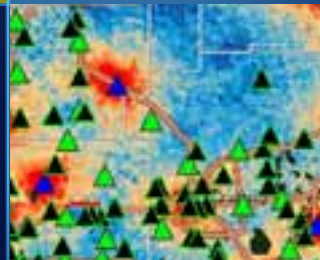


# Productivity Tools

- Archive Jobs
- Job Relationship Viewer



# Productivity Tools Demo



# REST and Web API

- **Simple deployment for ArcGIS Workflow Manager Server and REST API**
- **Custom web application development**
  - **Flex API**
  - **JavaScript API**
  - **Silverlight API**



# ArcGIS Workflow Manager Web Applications

- **Out-of-the-box**
  - **Flex Viewer**
  - **JavaScript Viewer**
  - **Flex Widgets**



# Resources

- **ArcGIS Resource Center**
  - [Workflow Manager Resources](#)
  - [Workflow Manager User Guide](#)
  - [Workflow Manager Forum](#)
- **Product Page**
  - <http://esri.com/workflowmanager>



esri