



Esri International User Conference | San Diego, CA
Technical Workshops | July 14th, 2011

Road Ahead – Analysis Capabilities (ArcGIS 10.1)

Jian Lange



DeKalb County Board

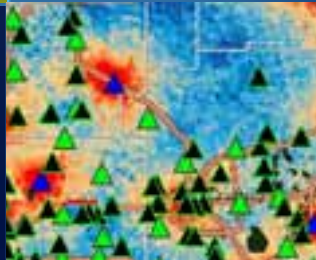
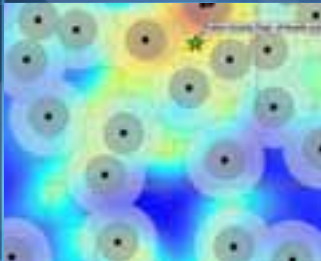
Fulton County Dept. of Health and Wellness/District 3, Unit 2, 04/04/2014

Spatial Analysis in 10.1

Make it Easy

Make it Accessible

Improve the Science



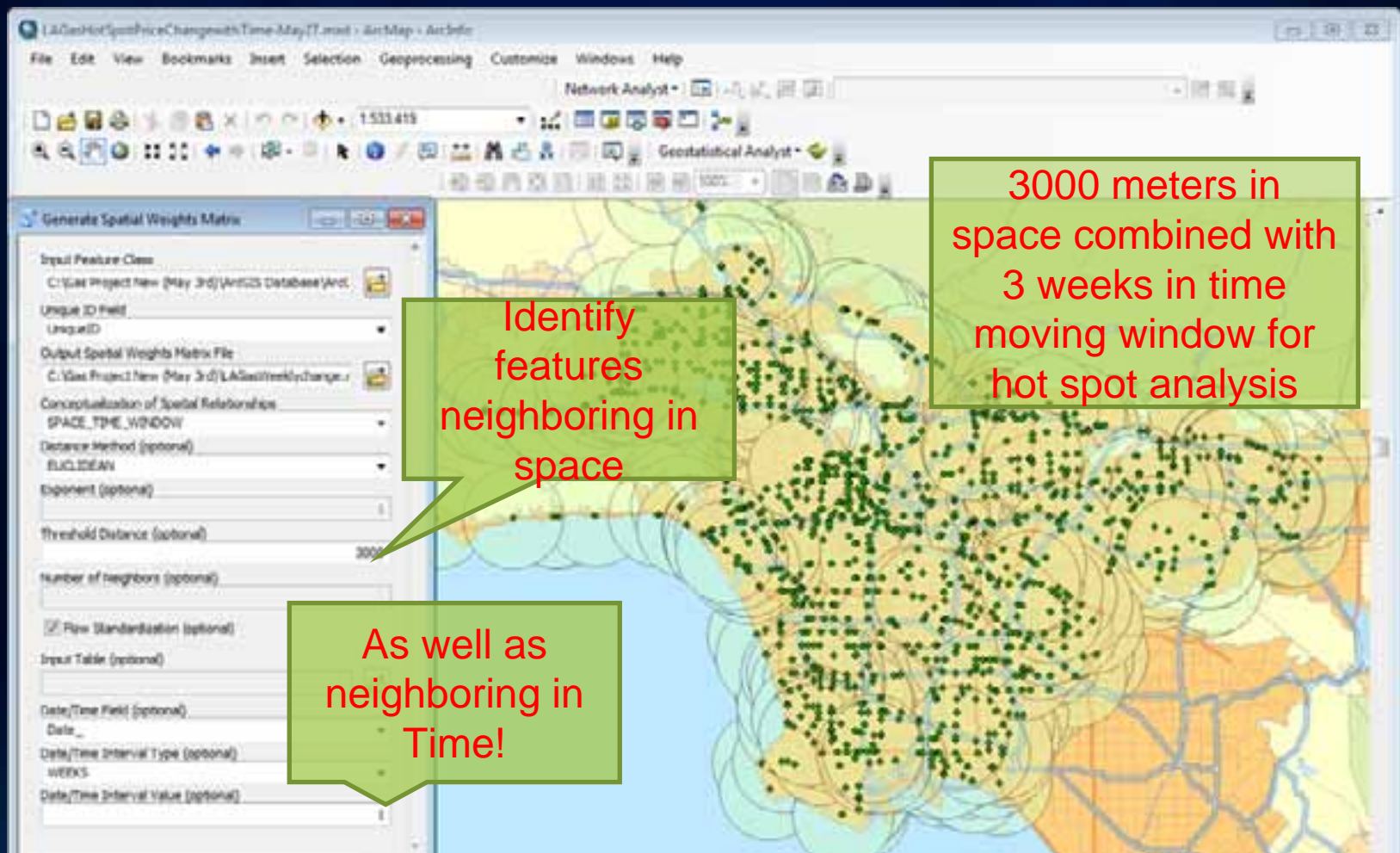
Agenda

- **New Analysis tools and enhancements**
 - Spatial Statistics
 - Geostatistical Analyst extension
- Improvements in Network Analyst Extension

New Analysis Tools and Enhancements

Identify space-time clusters

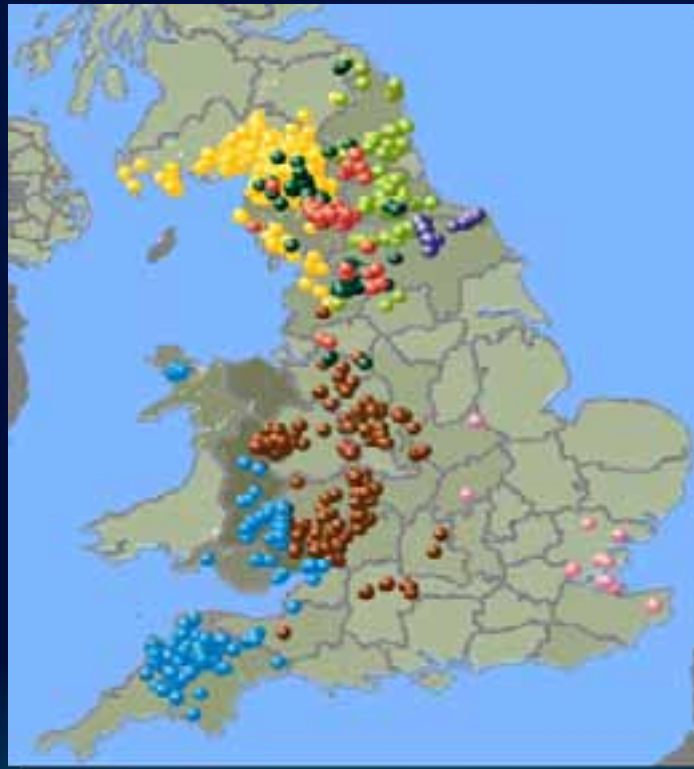
(Considering both space and time in Hotspot analysis)



New Analysis Tools and Enhancements

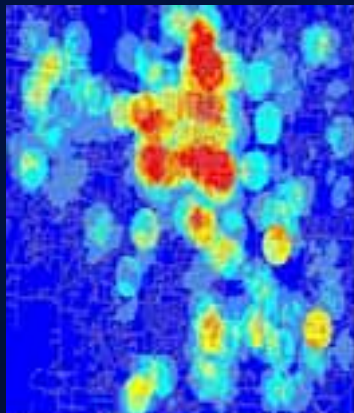
- Group Similar Features

Foot and Mouth outbreaks in 2001

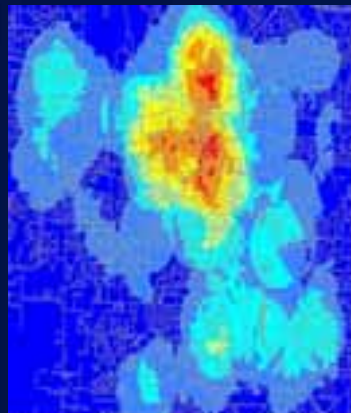


New Analysis Tools and Enhancements

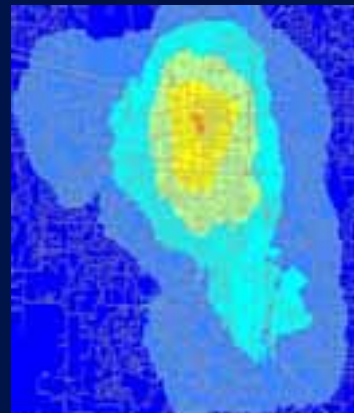
- Find appropriate scale of analysis
(Incremental spatial autocorrelation)



1/4 Mile Radius



1/2 Mile Radius



1 Mile Radius

Available in ArcGIS 10 for as a Sample Script

New Analysis Tools and Enhancements

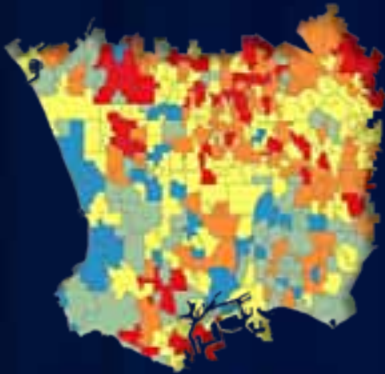
- Exploratory regression



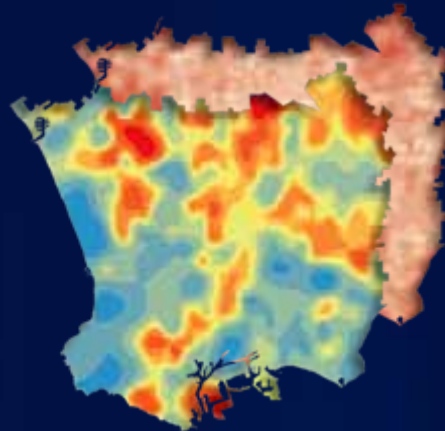
Available in ArcGIS 10 for as a Sample Script

New Analysis Tools and Enhancements

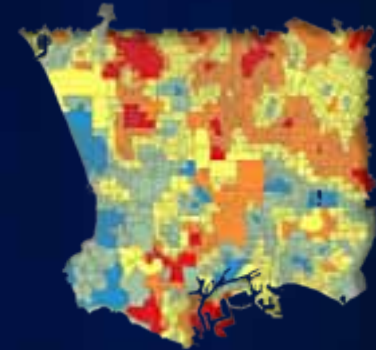
Areal Interpolation



Obesity by school zone



**Obesity surface and
error surface**



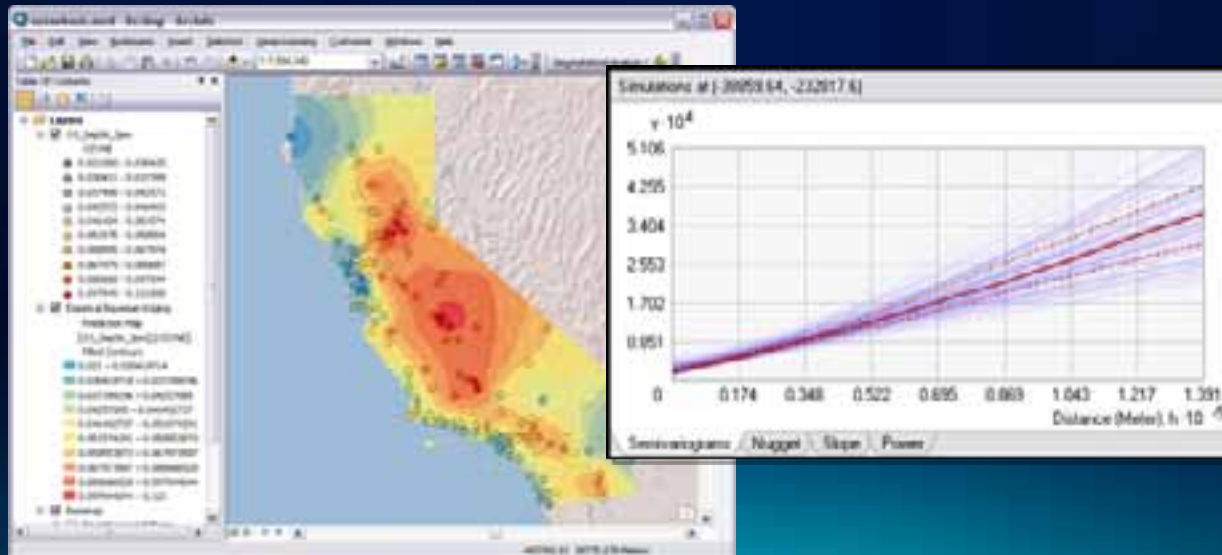
Obesity by census block

- **Cast data to a different geometry**
 - School zones to census tracts
- **Model and fill-in missing data**

New Analysis Tools and Enhancements

Empirical Bayesian Kriging

- Spatial relationships are modeled automatically
 - Very easy to use (few parameters)
 - Available as a GP tool
- Results often better than traditional kriging
- Uses local models to capture small scale effects
 - Doesn't assume one model fits the entire data



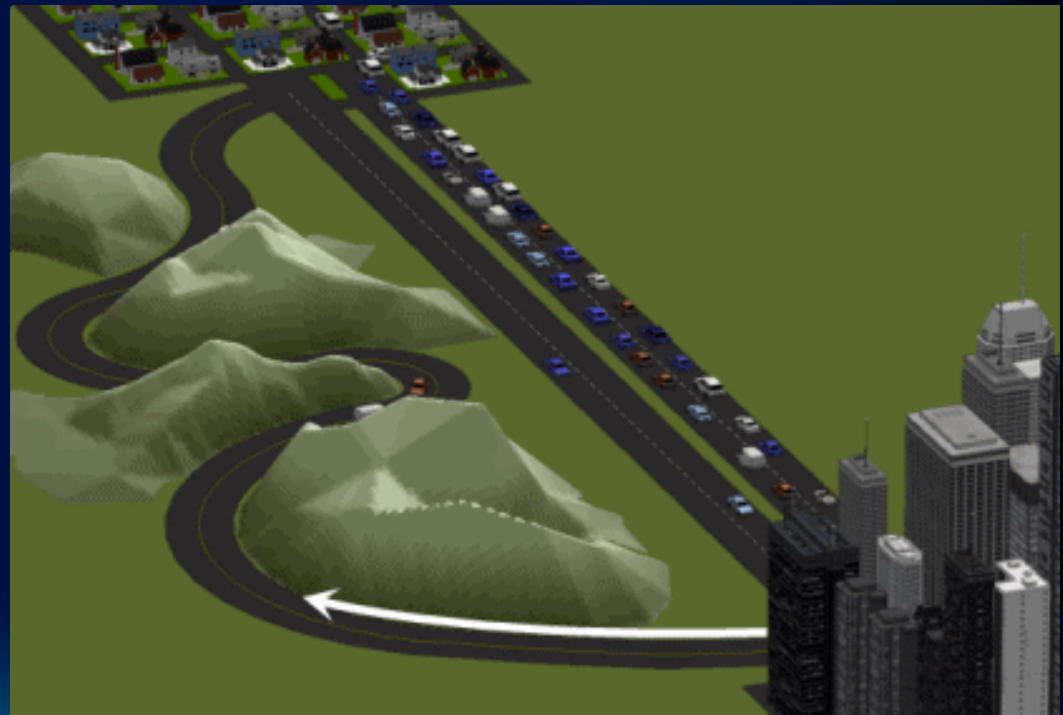
Faster Network Analysis

- Significantly faster service area solver



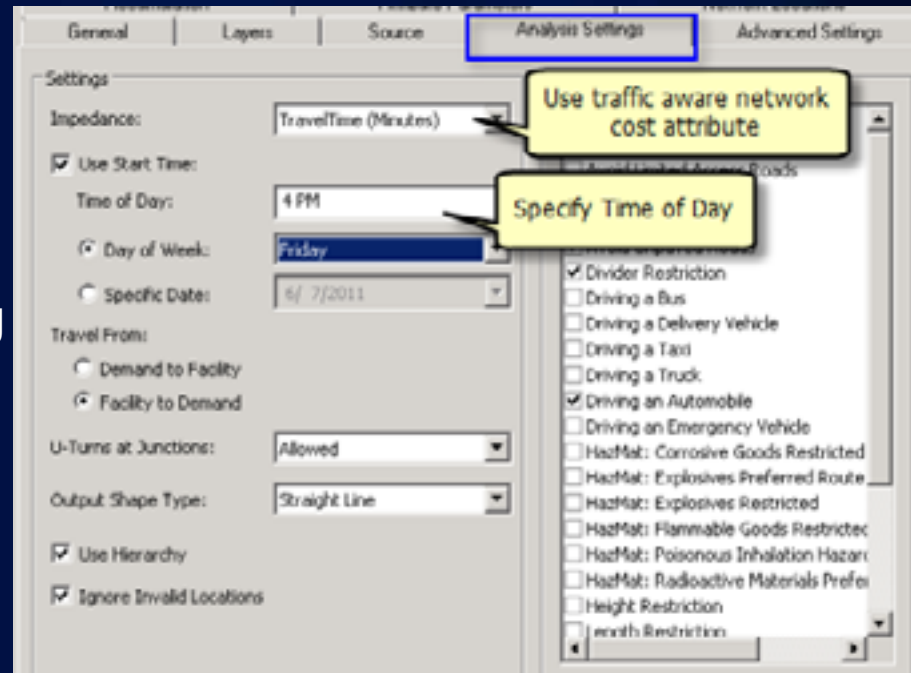
Routing with Historical and Real-Time Traffic

- Point to point routes
- Optimize stop sequence
- Time windows
- Time aware



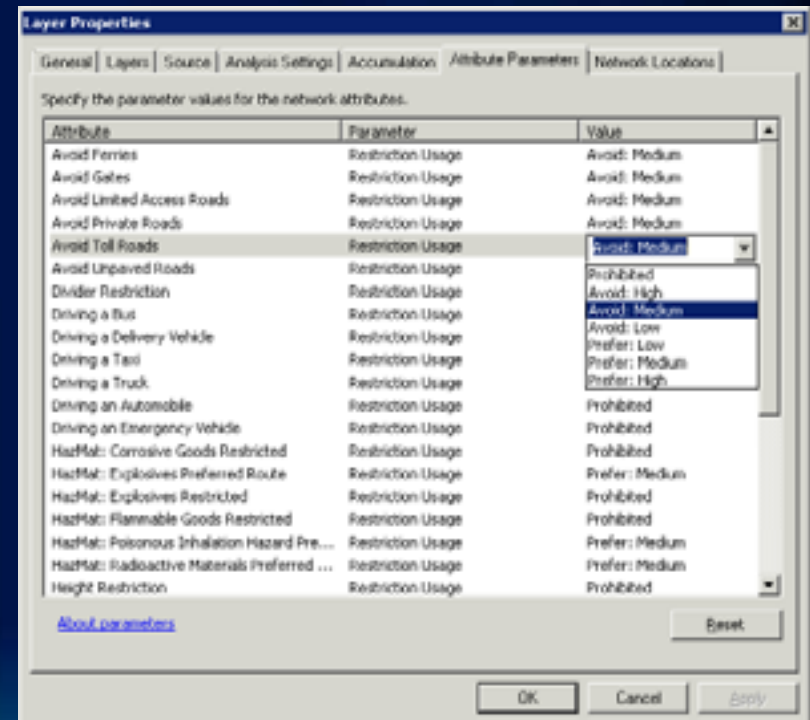
All Solvers Are Time Aware

- Can use historical or real-time speeds
- Solution is different based on time of day
 - Provides better or updated ETAs for existing routes
- To perform time aware analysis, specify...
 - Traffic aware cost attribute
 - Time of day



Enhanced Restrictions

- Frequently requested enhancement
- More flexible restriction model
 - Managed using restriction attributes with parameters
 - Roads can be:
 - Preferred
 - Avoided
 - Prohibited entirely
 - Examples:
 - Prefer truck routes
 - Avoid toll roads



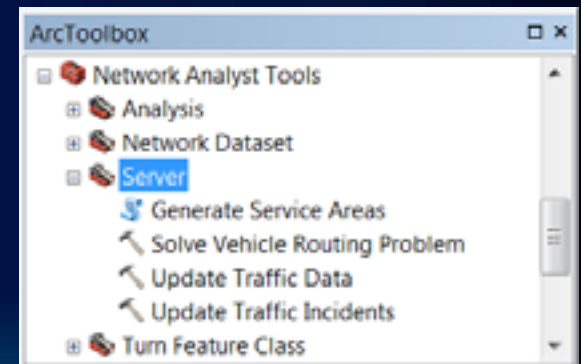
DEMO

- Find route that avoids toll roads
- Find route that uses designated truck route roads



New Network Analysis Services in ArcGIS 10.1

- Use network analysis services from ArcGIS Online
- Easily publish your own services using tools in Server toolset



Questions?

Please complete the session evaluations at:

<http://www.esri.com/sessionevals>