

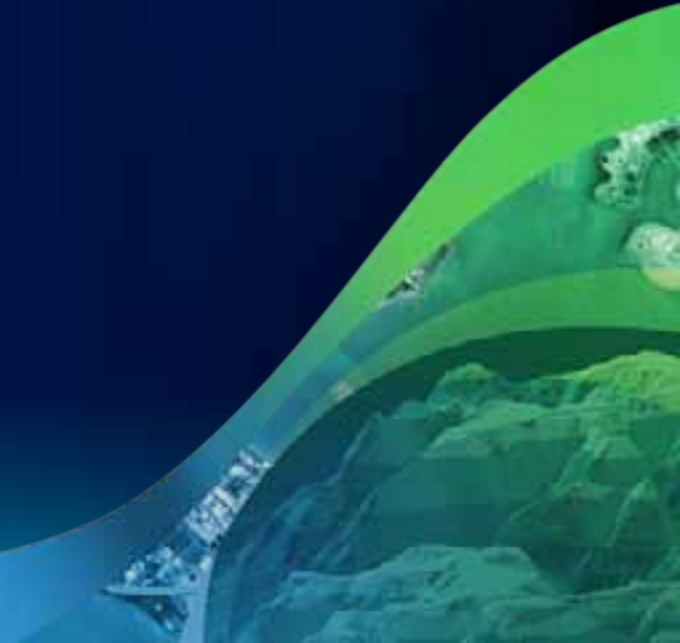


**Esri International User Conference | San Diego, CA**  
**Technical Workshops | July 13, 2011**

# **Introducing Geoportal Server**

@martenhogeweg

# The BIG Picture



# Resources Need to be Findable

Supporting different user communities

**Brief Metadata is Sufficient**

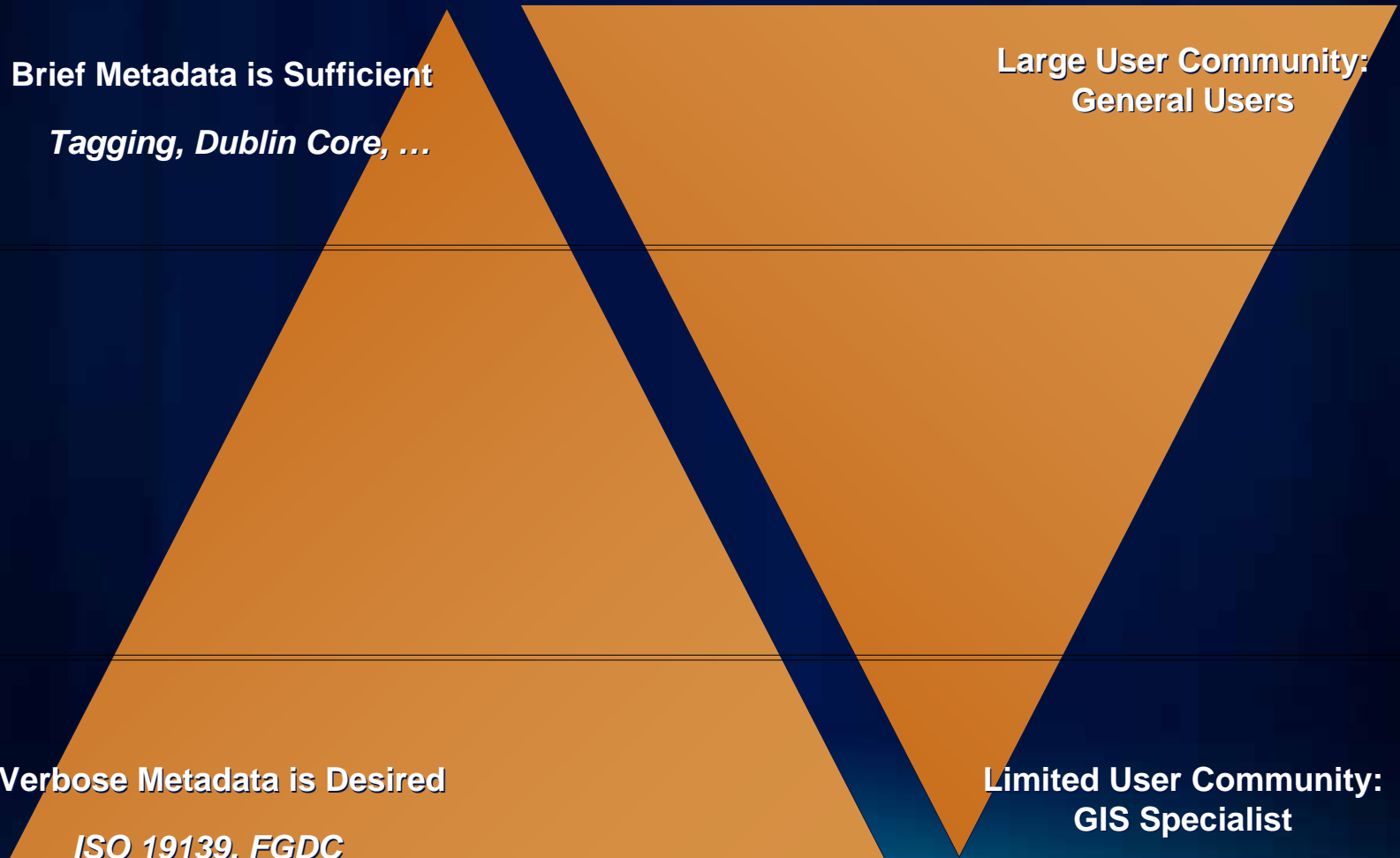
*Tagging, Dublin Core, ...*

**Large User Community:  
General Users**

**Verbose Metadata is Desired**

*ISO 19139, FGDC  
Metadata Profiles*

**Limited User Community:  
GIS Specialist**



# Moving from Data Sharing to Services Sharing

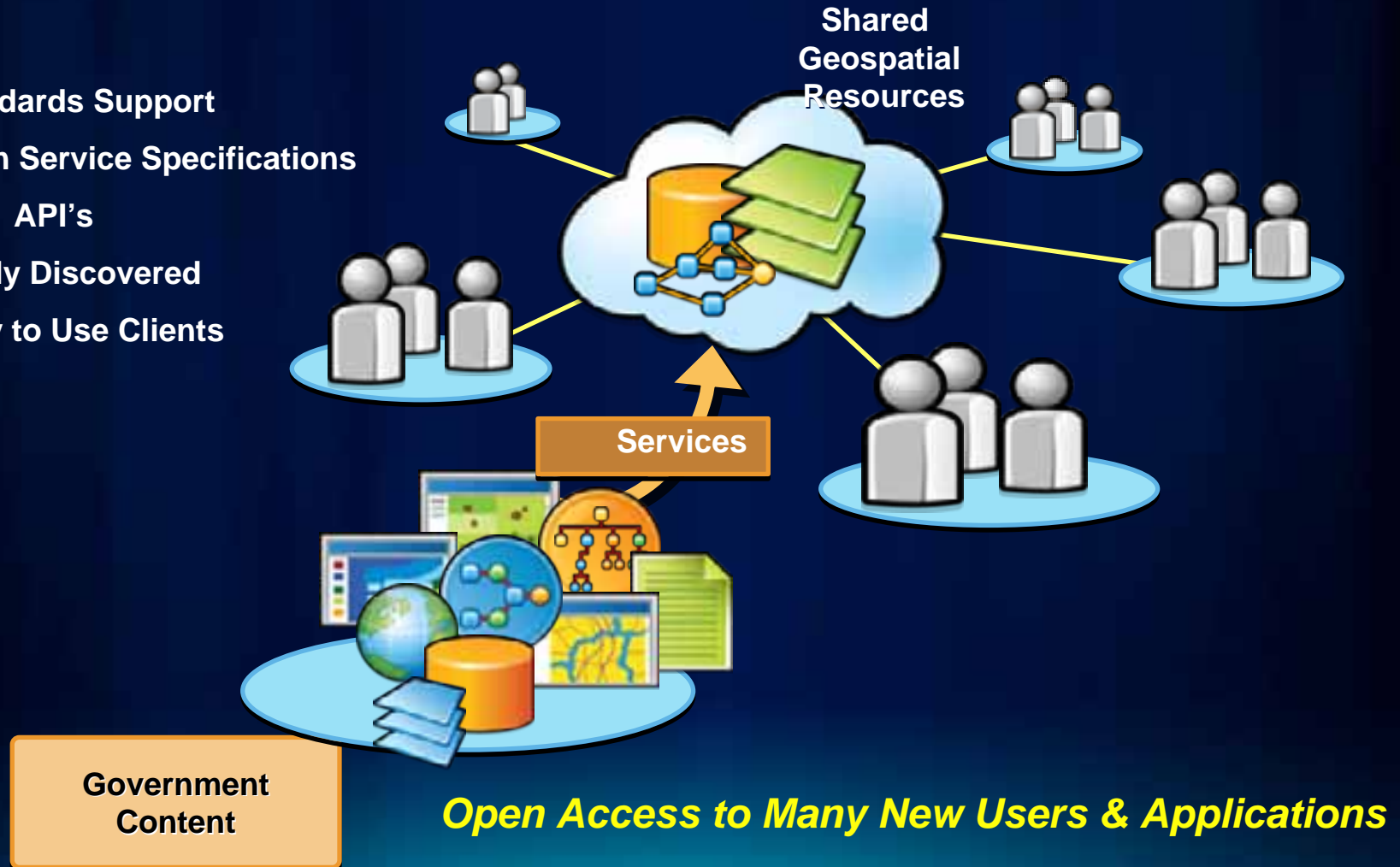
Standards Support

Open Service Specifications

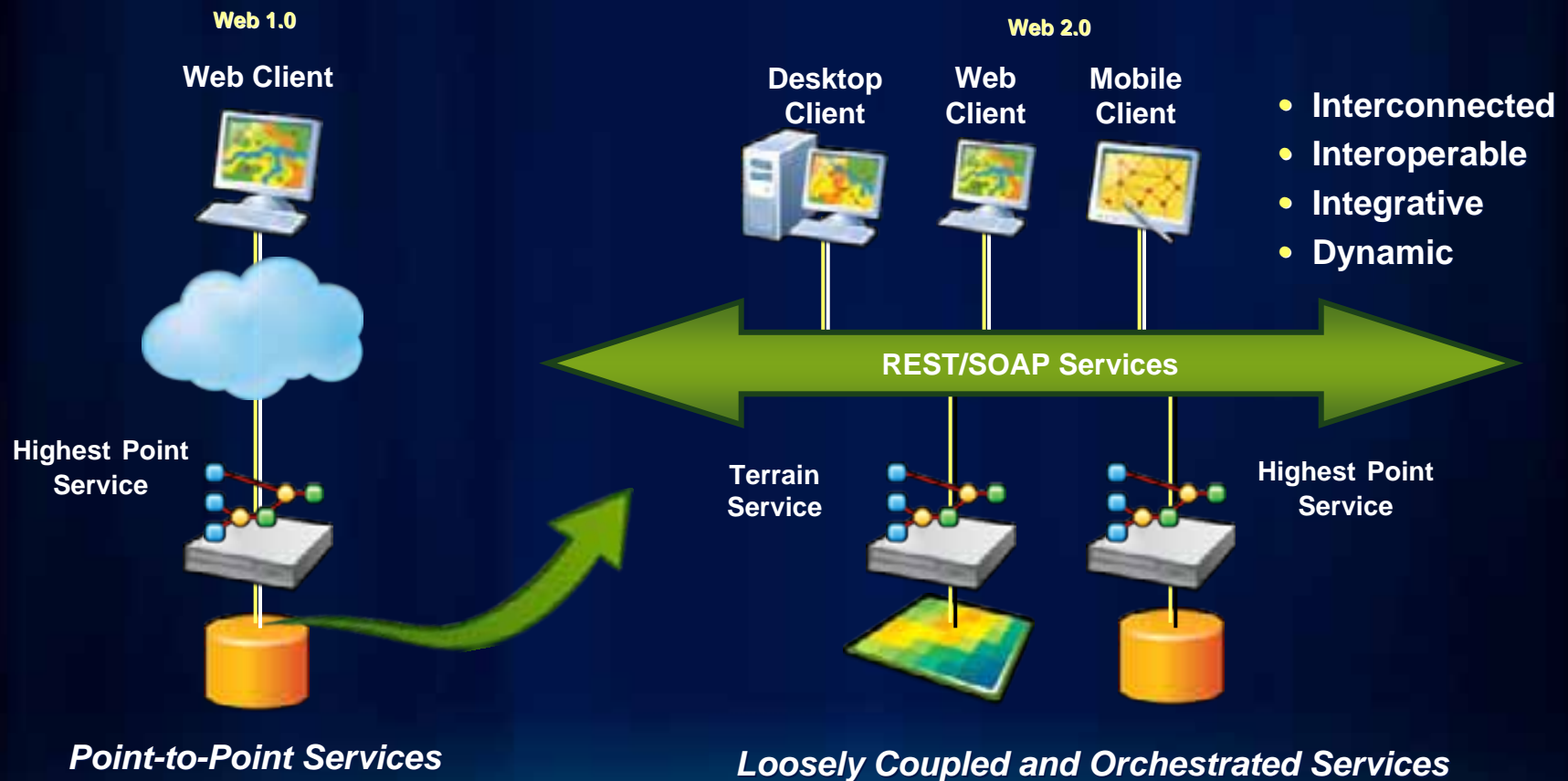
Free API's

Easily Discovered

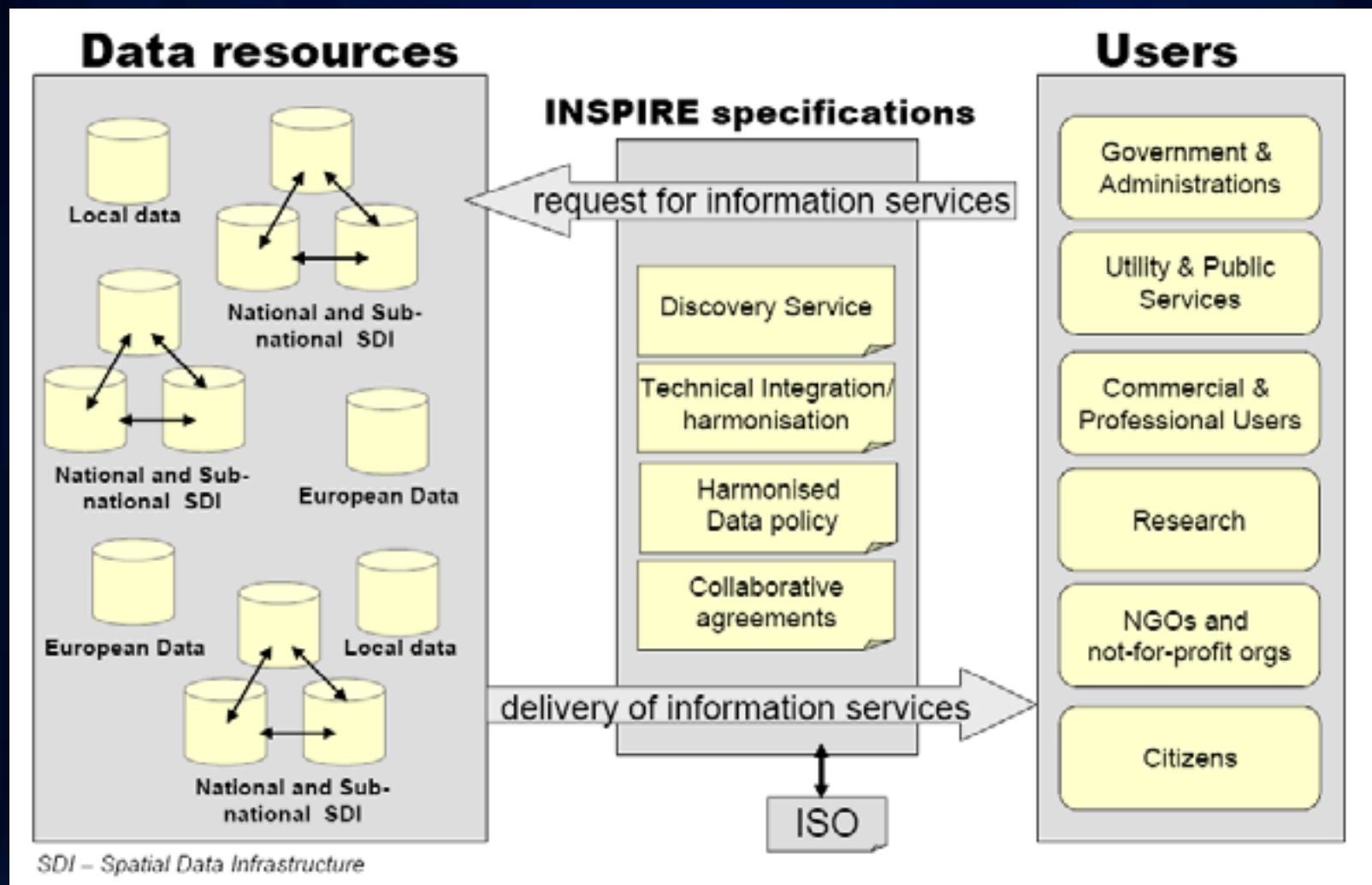
Easy to Use Clients



# Moving From Application Silos to Platforms

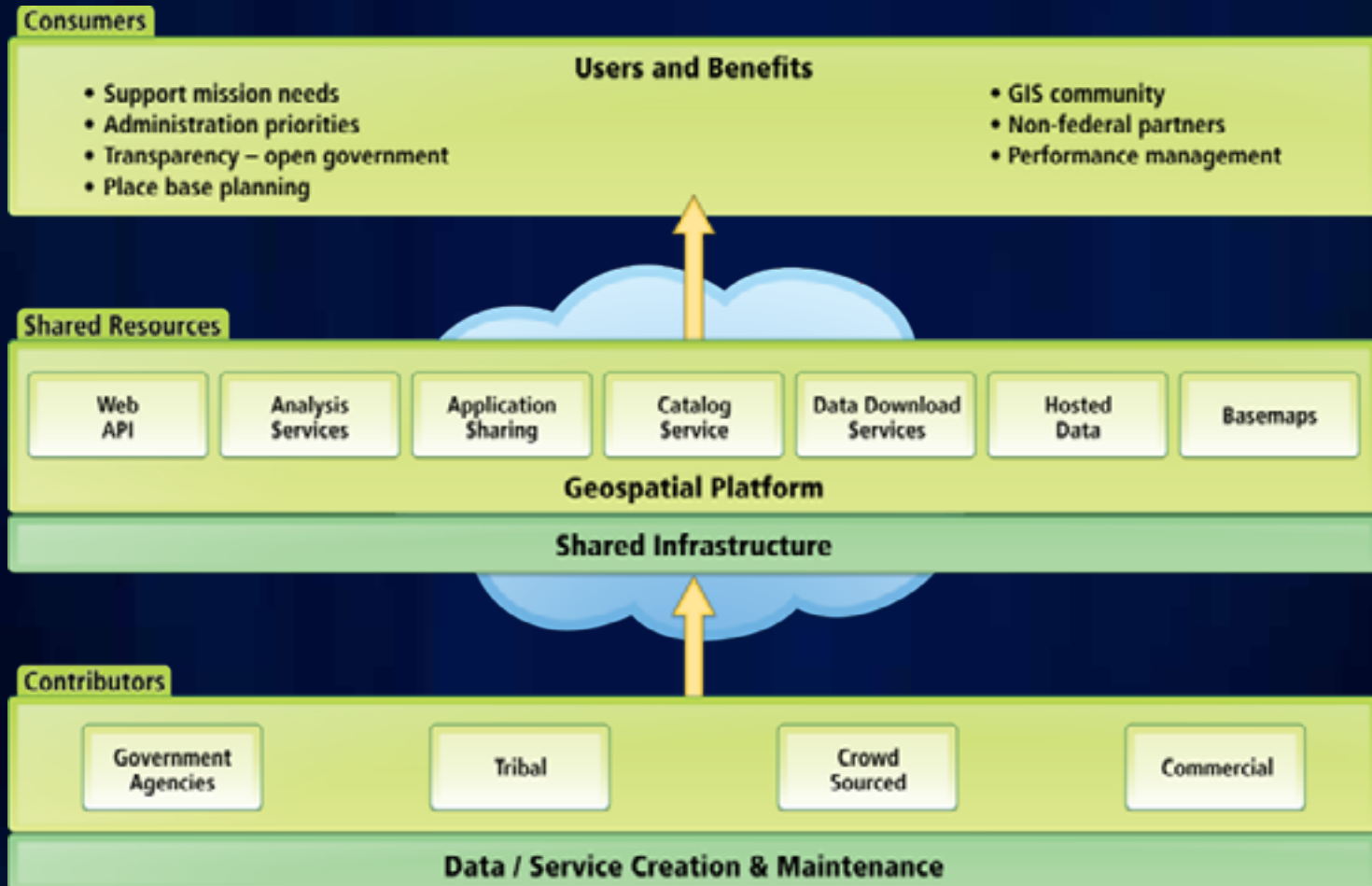


# Example – INSPIRE



# Geospatial Platform Connects Providers and Users

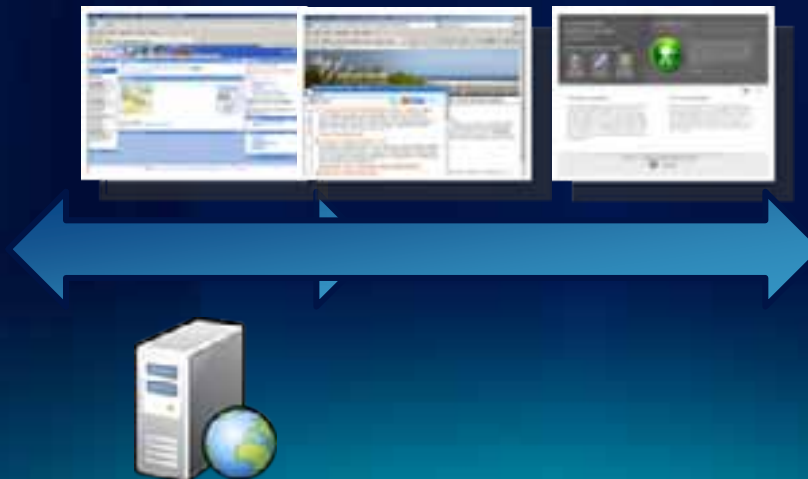
## Contributors, Consumers and Shared Infrastructure/Services





## Example – Data.gov

- Data.gov – new initiative to transparent government
- Should Data.gov build yet another catalog for data?
- Geodata.gov and Data.gov collaborated
- Geodata.gov now supplies Data.gov with 385,000+ downloadable datasets through an OGC Web Service





# Esri Geoportal Server



# Esri Geoportal Server

Enabling discovery and use of geospatial resources in heterogeneous environments

- Search and view geospatial resources
- Manage, publish, and store metadata
- View live map services
- Download data



# Use Case: “I want to find data ...”

## Solution:

- Simple keyword Search
- Spatial search
- Federated Search
- Advanced options for experts
- Smart matching and ranking
- Thesaurus Service
- Search results are simple to understand... *yet contain detail for power users*



# Use Case: *“I don’t want to search though...”*

## Solution:

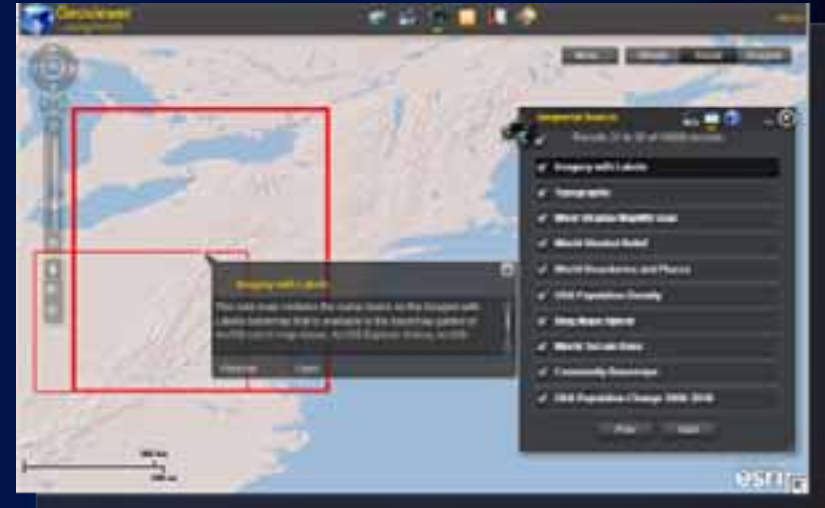
- Analogous to Department Store
- Implementer Organizes Hierarchy
- Based on Metadata Content
- Filter/Paginate Within Category
- Classification and Relationships



# Use Case: *“I want to make a map ...”*

## Solution:

- **Preview services:**
  - ArcGIS Server Map Services
  - ArcIMS Image Services
  - OGC WMS, SOS
  - GeoRSS
  - KML
- **Provide integration points for map viewer platforms**
  - ArcGIS.com Viewer
  - JavaScript, Flex, Silverlight
  - ArcGIS Desktop ArcMap
  - ArcGIS Explorer
  - Java ADF



## Use Case: “I want to download data ...”

## Solution:

- **Select area**
- **Select data**
- **Set options**
- **Deliver download link through email**
- **Based on Clip-Zip-Ship Service**
- **Extensible in Python**





# Use Case: “I want to share my resource...”

## Solution:

- Register Servers or Services Directly
- Create metadata online
- Upload metadata
- Register catalog service for harvesting
- Support metadata standards:
  - INSPIRE
  - North American Profile
  - Dublin Core
  - Configurable

The image displays two overlapping screenshots of a web application interface. The top screenshot, titled 'Register New Item', shows a form for registering a new item. It includes a dropdown menu for 'On behalf of' (set to 'inspire'), a 'Level of Detail' section with radio buttons for 'Simple Item Description', 'Detailed Item Description', 'ISO 19115/19115-2 Web Resource', 'ISO 19115/19115-2 for', 'North American Profile', 'INSPIRE Profile for ISO', and 'INSPIRE Standard Profile'. A 'Create Repository' button is visible. The bottom screenshot, titled 'Upload Metadata', shows a form for uploading metadata. It includes a 'Browse' button to select a metadata file from the ISO metadata standard and in Extensible Markup Language (XML) the catalog. It also has a 'Local path' field and a 'Browse' button. A dropdown menu for 'On behalf of' (set to 'inspire') is also present.

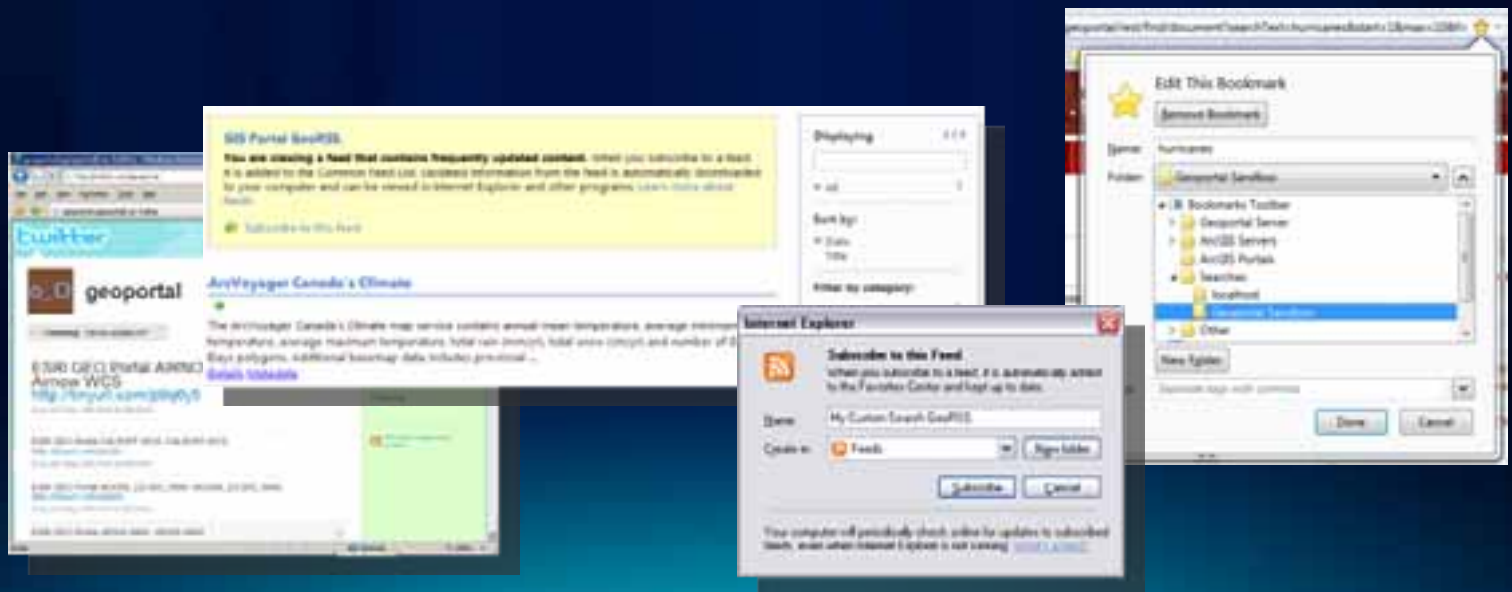


# Use Case: “Is new data is available...?”

## Solution:

- User specifies search criteria
- Give user link to a GeoRSS feed
- User subscribes to GeoRSS feed
- Bookmark searches in the browser

See results through REST API: [GEORSS](#) [ATOM](#) [HTML](#) [FRAGMENT](#) [KML](#)



# Use Case: “Is my resource is available...?”

## Solution:

- Monitor Services
- Verify Implementation

- Performance and Scalability:

<http://resources.esri.com/enterprisegeis/index.cfm?fa=performance.main>

- FGDC Service Status Checker:

<http://registry.fgdc.gov/statuschecker/>

The screenshot displays the FGDC Service Status Checker interface. At the top, it shows the 'FireWatch WMS' service details, including a description: 'A Web Map Service (WMS) that displays detected 'hot spots' in Southeast Asia (Indonesia and Australia) based on satellite sensing'. Below this, there are links: 'Open', 'Preview', 'Add To Map', 'Details', 'Metadata', 'Zoom To', 'Share', and 'Test'. The 'Test' link is circled in red. A red arrow points from the 'Test' link to the 'Service Status Checker' window. The 'Service Status Checker' window shows a 'Service Analysis Report for 2009-02-09 2:20:09'. It includes a 'Service Status' section with a green checkmark and an upward arrow, indicating a '99.45%' status. Below this, there is a 'Test Results' section with a table summarizing the test results. The table has columns for 'Test', 'Status', and 'Details'. The tests listed are 'Capabilities', 'GetCapabilities', and 'GetMap', all of which passed successfully.

Test	Status	Details
Capabilities	Pass	http://resources.fgdc.gov/arcgis/rest/services/...
GetCapabilities	Pass	http://resources.fgdc.gov/arcgis/rest/services/...
GetMap	Pass	http://resources.fgdc.gov/arcgis/rest/services/...

# Esri Geoportal Server

<http://esriurl.com/geoportalserver>



# Esri Geoportal Server

## New and Familiar

- **Geoportal Extension is now Esri Geoportal Server**
- **Released under Apache 2.0 license**
- **Available on SourceForge**
  - **Code**
  - **Documentation**
  - **Releases**
  - **Community**
- **No requirement for ArcGIS Server**
- **Optional technical support from Esri**
- **<http://esriurl.com/geoportalserver>**

# DEMO

Discover

Evaluate

Access

Geoviewer



# Esri Open Source?





# Esri Supports Open Source Software

The author, who claims creation of this work, **expressly publishes it to the public domain**. This work is free for the taking and **cannot be appropriated by a single author** even though it may be included in a copyrighted work. It **may be freely used and redistributed** and is provided "AS-IS" **without warranty of any kind**. No technical support is provided.





# Esri Supports Open Source Software

ArcScripts downloads - ESRI Support - Mozilla Firefox

File Edit View History Bookmarks Tools Help

http://arcscripts.esri.com/scripts.asp?pg=1&sb=9&cb=asc&ieDate=&sr= arcscripts

.gov Travel Recovery Data.gov Geodata.gov GEOSS INSPIRE ArcGIS Servers GPT Samples Demos OpenStreetMap Haiti

ArcScripts downloads - ESRI Support

You are here: > ArcScripts > Search Results

Search ArcScripts

Use the following options to customize your search:

All languages

All ESRI software

10 Results per page ☐ Show script summaries

Search for   [Tips](#)

Scripts for: All languages AND All ESRI software  
scripts 1-10 of 5715

Resort by	Title	Software	Language	Author	Modified	Downloads
View	LabelOnlyFeaturesBiggerThanLabels	ArcView GIS	Avenue	ESRI	Mar 23 1998	939
View	HideLegendForInvisibleThemes	ArcView GIS	Avenue	ESRI	Mar 26 1998	1023
Draw	Complete Arrows	PC ARC/INFO / DAK	SML	ESRI	Mar 31 1998	532

Language	Author	Modified	Downloads
Avenue	ESRI	Mar 23 1998	939
Avenue	ESRI	Mar 26 1998	1023
SML	ESRI	Mar 31 1998	532
SML	ESRI	Mar 31 1998	494

Resort by	Title	Software	Language	Author	Modified	Downloads
XTools		ArcView GIS	Avenue	Mike DeLaune	Sep 15 2003	160178
Export to KML 2.5.4		ArcGIS Desktop	Visual Basic	Kevin Martin	Aug 17 2010	111115

Addvalence ArcInfo Workstation AML ESRI Apr 6 1998 858

Done

# Community Contributions Welcome

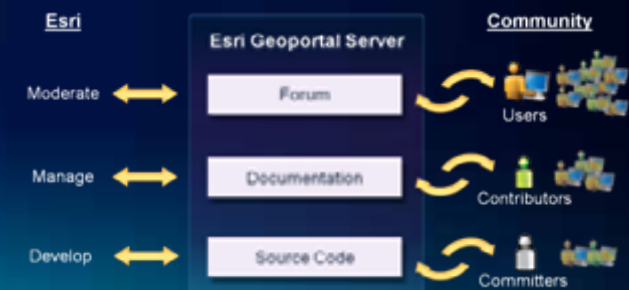


# Enhanced Metadata Editor

- **New Framework for Metadata Editors**
- **New Publishing Pipeline**
  - **Form Validation**
  - **Schema Validation**
  - **Schematron Validation**
- **Separate User Interface From Form Logic**
- **Edit Full Metadata**
  - **Repeatable sections and elements**
  - **Componentized Metadata Definition**
- **Extensible Through JavaScript**
- **Version 1.1 – ISO/INSPIRE Metadata**
- **Version 1.1.1 – FGDC Metadata**

# Development Plan Geoportal Server 2011

- **Version 1.1 – April**
  - Enhanced ISO/INSPIRE metadata editor
- **Version 1.1.1 – June**
  - Enhanced FGDC metadata editor and documentation
- **Version 2.0**
  - ArcGIS Portal integration
  - ebRIM, Feature Data Dictionary, Feature Catalog support
  - Simplify installation/upgrade
  - Enhanced WMTS, SOS, WPS support
  - OAI-PMH, Z39.50, and GeoSPARQL
  - Complete Wiki documentation
  - Upgrades to new underlying API



# Geoportal Server and ArcGIS Portal

- **Search ArcGIS Portals from Geoportals**
- **Full Metadata with ArcGIS Portal Items**
- **Contribute Resources to ArcGIS Portals/ArcGIS.com**
  - Transform Standards-based Metadata
  - Authenticate with ArcGIS Portal
  - Register Resource with ArcGIS Portal
- **Future Plans:**
  - Synchronize content between Geoportal and ArcGIS Portal
  - Related Items
  - Provide OGC CS-W Interface to ArcGIS Portal

# DEMO

Metadata Editor

ArcGIS Portal Integration



**Questions?**





## Other Sessions of Interest

- **Wednesday**

- 1 PM – ArcGIS for INSPIRE – Exhibit Hall C (Web & Server GIS Demo Theater)
- 3:15PM – Authoritative National Datasets and Standards – 28D

- **Thursday**

- 10 AM – ArcGIS for INSPIRE - Exhibit Hall C (Web & Server GIS Demo Theater)
- 11 AM – Road Ahead – Geoportal Server – 6A
- 3:15PM – Supporting European SDI with ArcGIS for INSPIRE – 27A

**Thank You!**

