



**Esri International User Conference | San Diego, CA**  
**Technical Workshops | July 13, 2011**

# **Image Processing in ArcGIS**

Melanie Harlow



# What is image processing?

- **Basic/advanced**
- **Pre-processing**
  - radiometric / geometric corrections
- **Post-processing**
  - Display and enhancement
  - Analysis (e.g. information extraction)

# Preprocessing

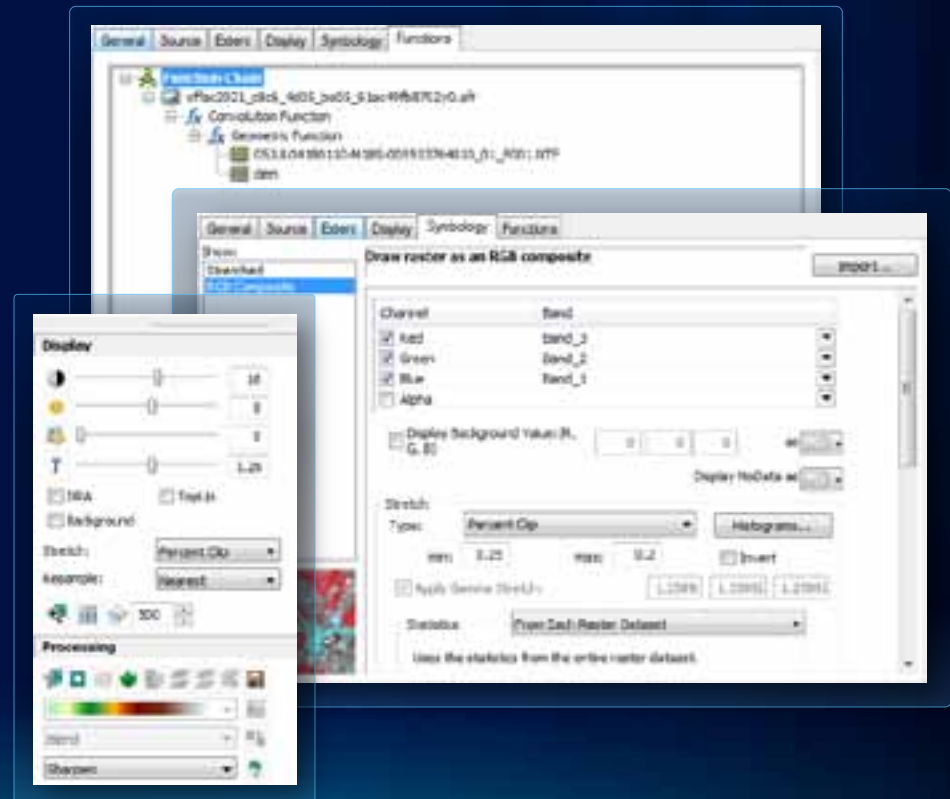
- **Making imagery useful**
  - **Radiometric**
    - Correcting sensor distortions
    - Atmospheric corrections
    - Illumination corrections
  - **Geometric**
    - Georeferencing
    - Orthorectification

# Post-Processing

- **Designing for a specific use**
  - **Merge bands or create specific band combination**
  - **Format conversion**
  - **Improve visual quality (enhance)**
  - **Pan-sharpen**
  - **Mosaic**
  - **Color correction**

# Processing on the fly

- Define properties on layers
- Use functions



# Processing permanently

- Use geoprocessing tools
- Export from display



# Image enhancement

- Imagery may be enhanced by default
- Enhancements require statistics

None



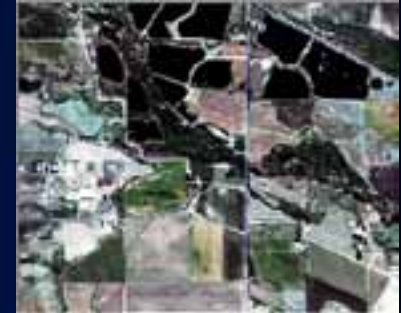
Std dev – 2



Histogram equalize



Percent clip – 2

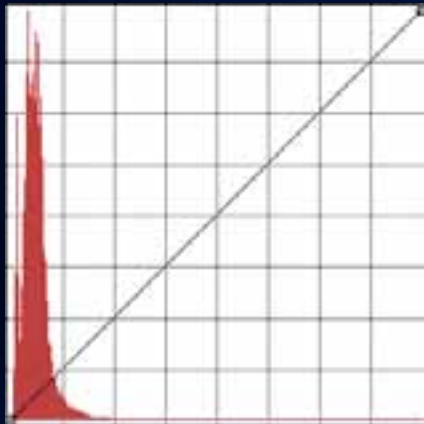


Percent clip – 0.25

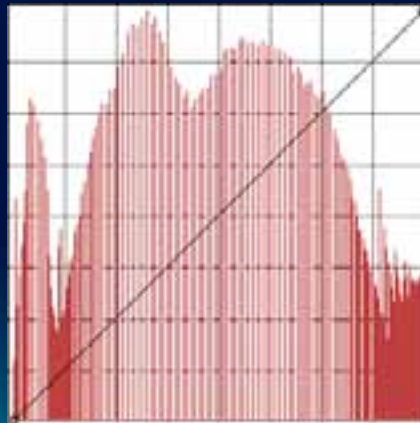


# Effects on the histogram

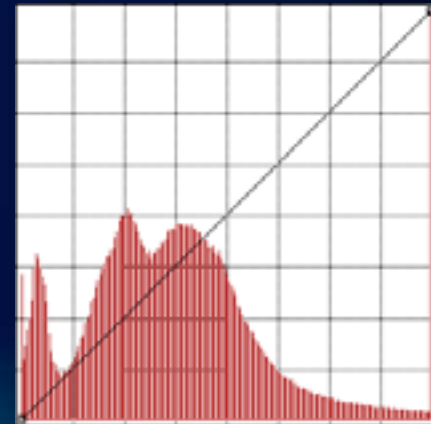
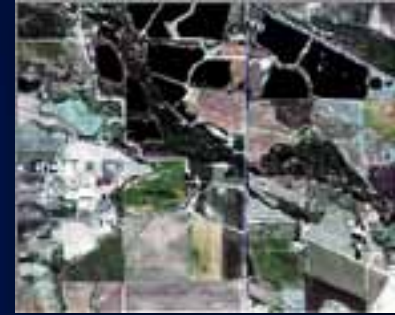
None



Histogram equalize



Percent clip – 2

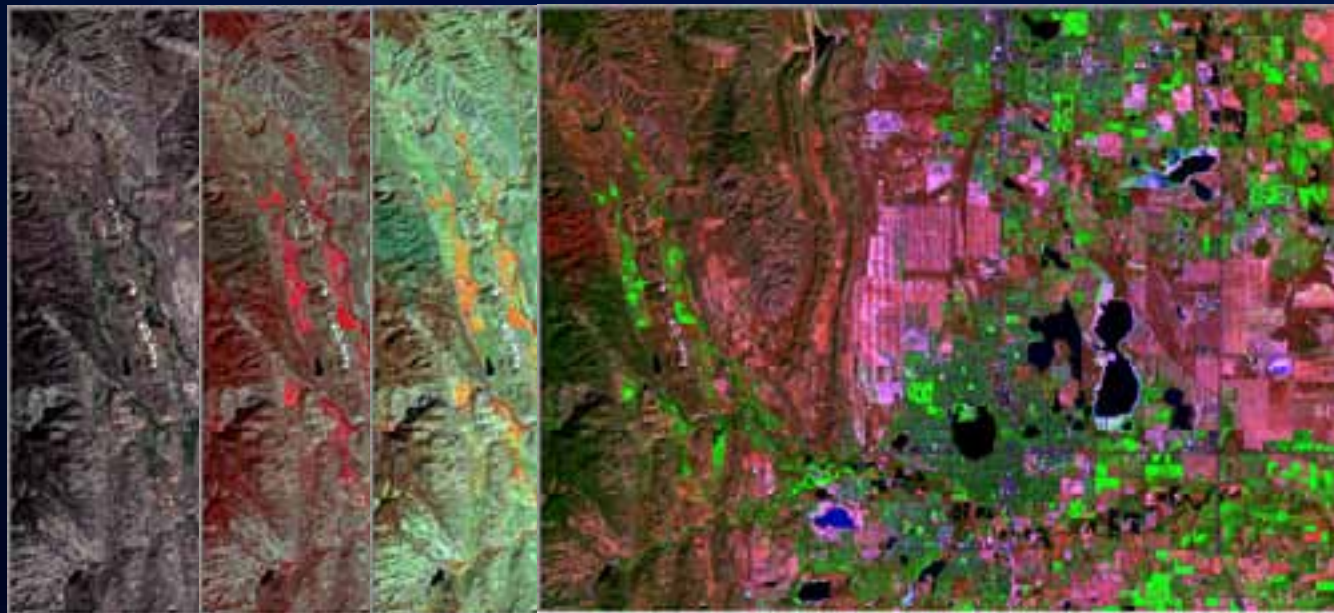




# Combining bands

- **Change bands to present different information**

RGB – 321-Neural-321-CNN-145-RGB-142-Weather



# Panchromatic sharpening

- Fusing a lower-resolution with a higher-resolution



# Mosaicking

- **Using a mosaic dataset**
  - Can be color corrected
- **Creating a mosaic layer**
  - Uses the Mosaic function
- **Creating a new output**
  - Exporting to a new output
  - Creating with geoprocessing tools



# Image processing—analysis

- Image classification
- Filtering (e.g. edge enhancements)
- Image or band algebra (e.g. indices, difference)
- Principal components analysis
  
- \* May require Spatial Analyst extension



**Demo**





Questions?

[www.esri.com/sessionevals](http://www.esri.com/sessionevals)



esri