



Esri International User Conference | San Diego, CA
Technical Workshops | July 12, 2011

ArcGIS for Land Records: An Introduction

Larry Young
Scott Oppmann

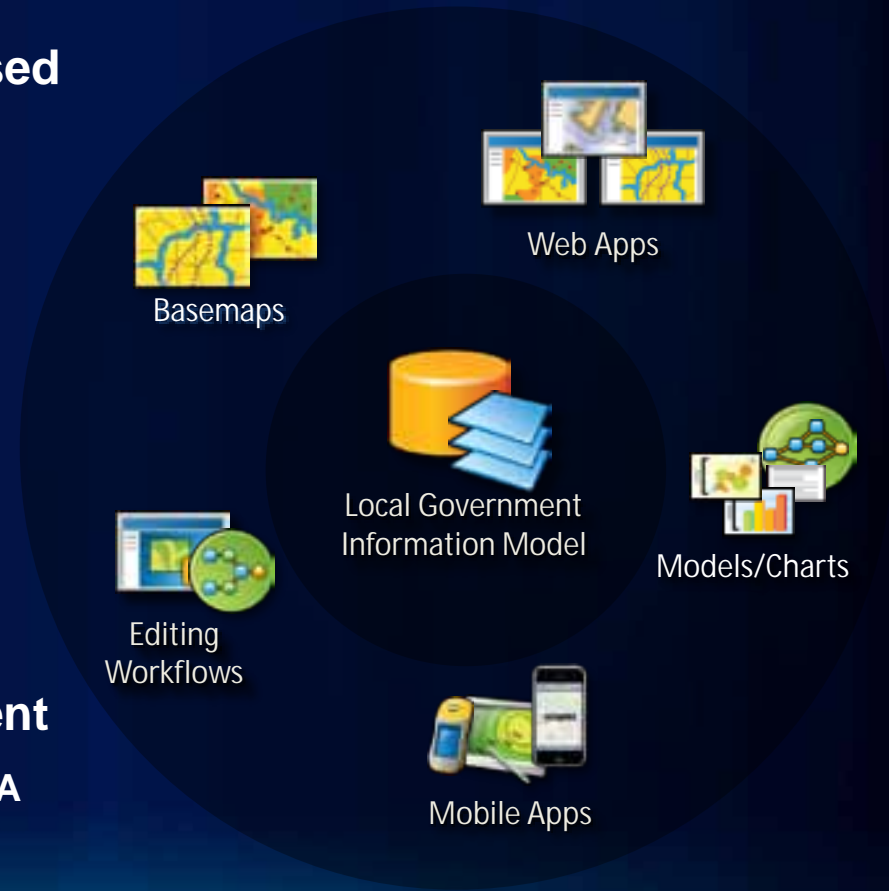
Agenda

- **Introduction**
- **The Land Records Community**
- **Land Records Maps and Apps**
- **ArcGIS for Local Government System**
- **What's Next**
- **Your Feedback**

ArcGIS for Local Government

A product for Esri's local government customers

- **A series of useful maps and apps focused on local government work**
 - Organized into modules
 - Extensible, configurable
 - A foundation for Partner solutions
- **Participation in the online community**
 - Best Practices / Implementation Support
- **Esri Services and Partner offerings**
 - Help implement, sustain and enhance
- **One ArcGIS product for local government**
 - Freely available for individual customer and ELA engagements



.....available on-premise or in the cloud

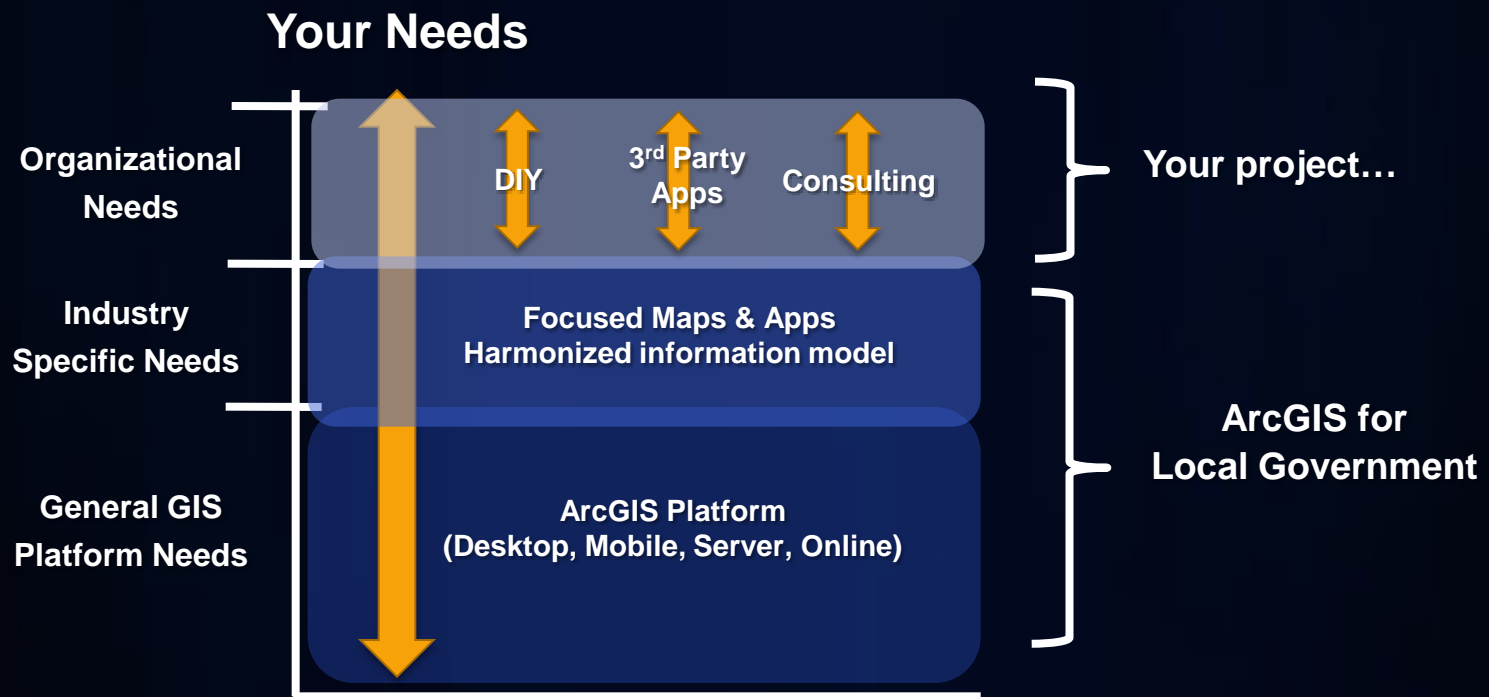
Our Mission

Help you increase the value of GIS in your organization

- **Make it easier to deploy ArcGIS**
 - Deliver applications quickly throughout your organization
 - Stay current with future releases / avoid legacy technology
 - Create a platform of geospatial data that can be leveraged by many
- **Address common constraints in local government**
 - Size and skills of staff
 - Budget and time available to implement
- **Empower the community to contribute**
 - Users
 - Partners

ArcGIS for Local Government

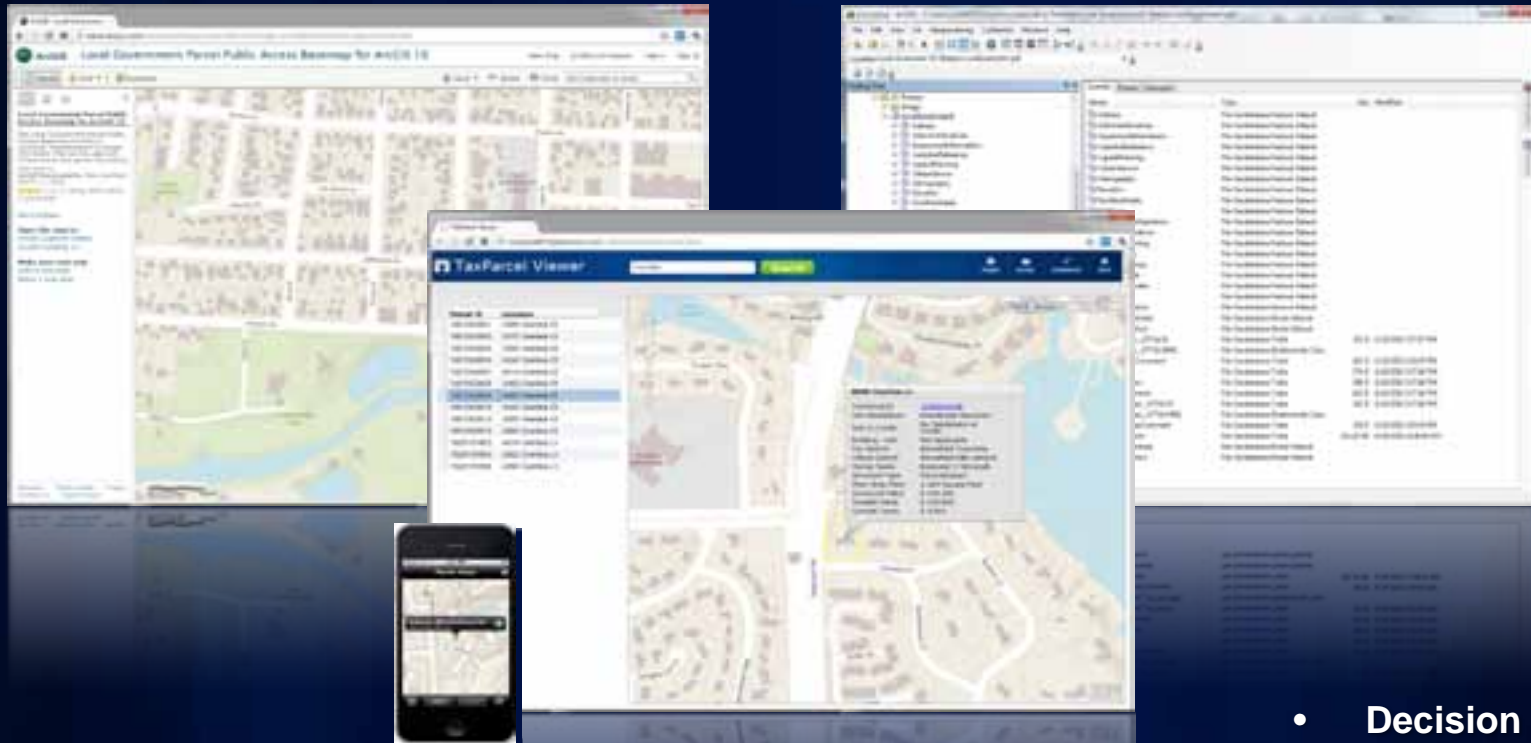
Changing the way you deploy GIS



...reducing time, risk and cost so GIS is easier to deploy and maintain

ArcGIS for Local Government

Empowering a local government through a common ArcGIS system



- Decision making
- Transparency
- Accountability
- Communication
- Planning

....desktop, web and mobile apps with meaningful maps and layers supported by single information model

Five Common Business Patterns

Asset
Management

Planning &
Analysis

Field
Mobility

Operational
Awareness

Citizen
Engagement

Land Records

Managing and
distributing authoritative
GIS data

Transforming data
into actionable
information

Getting information
into and out of the
field

Providing information
on the health of an
organization

Communicating directly
with stakeholders
and enlisting their
participation



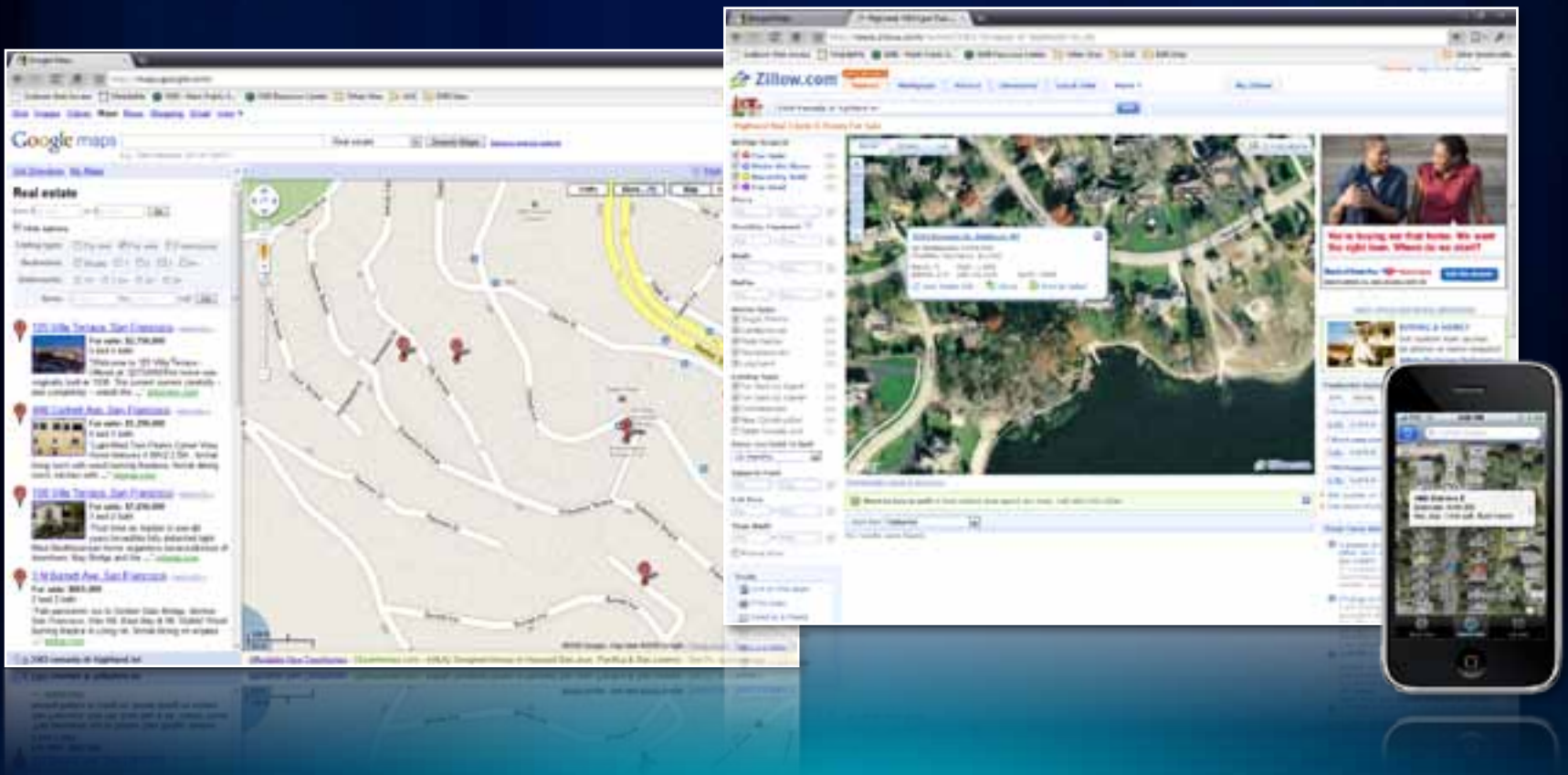
GIS for Land Records

- Statutory responsibility to inventory legal records and value land
- Used in many vital government operations
 - Assessment and Taxation, Land Use, Infrastructure, Deeds and Documents



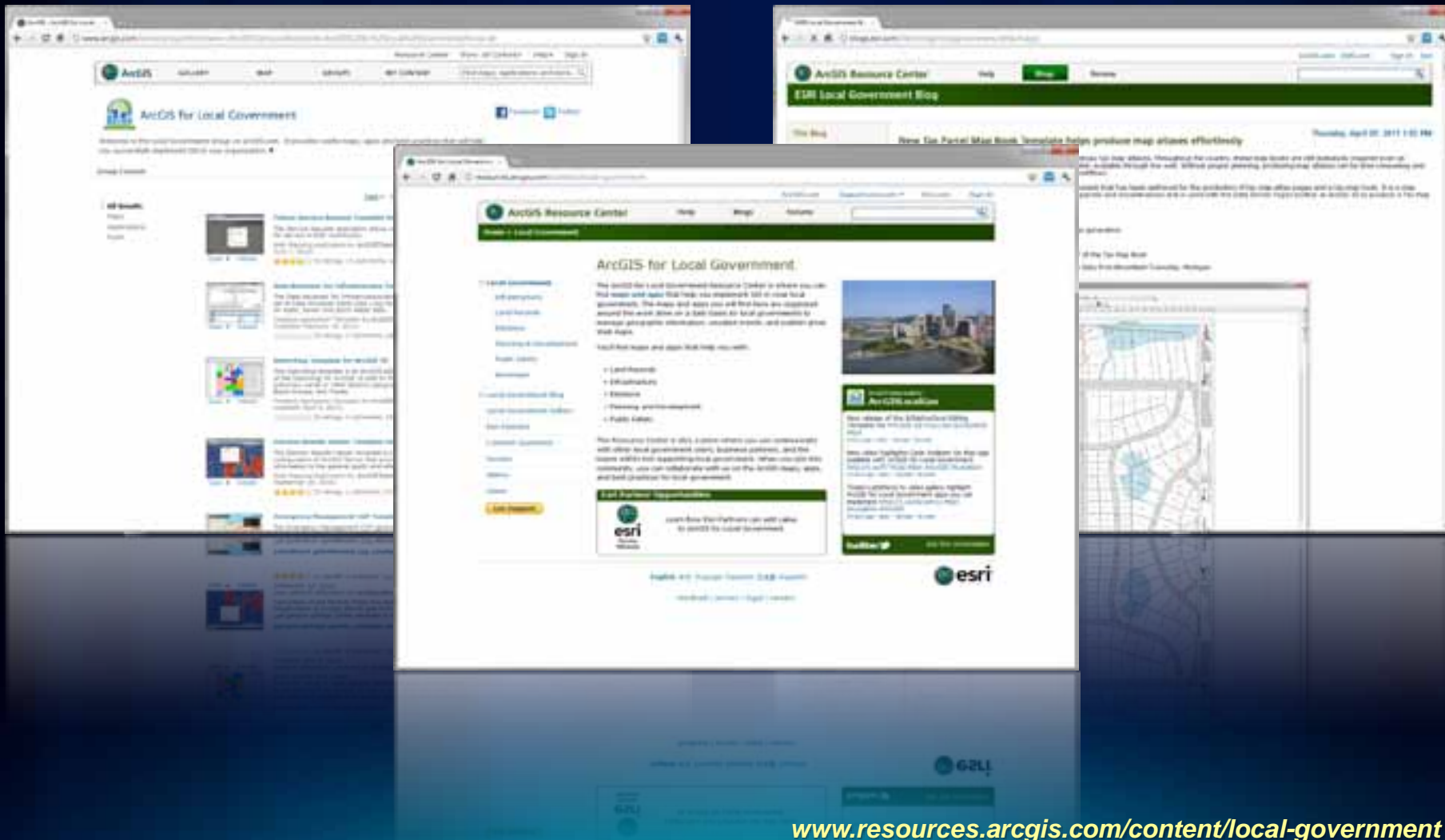
Evolving Land Records Requirements

- Historically, land records information has been used internally by local governments
 - And under valued and under utilized by more public audiences
- But that is changing.....



Land Records Community

An online community where Land Records users and partners can collaborate



Land Records Maps and Apps (Demo)

tax map books



parcel value
for iPhone



parcel
maintenance



tax parcel
viewer



public
notification



field
appraisal



value analysis



control
adjustment

ArcGIS 10

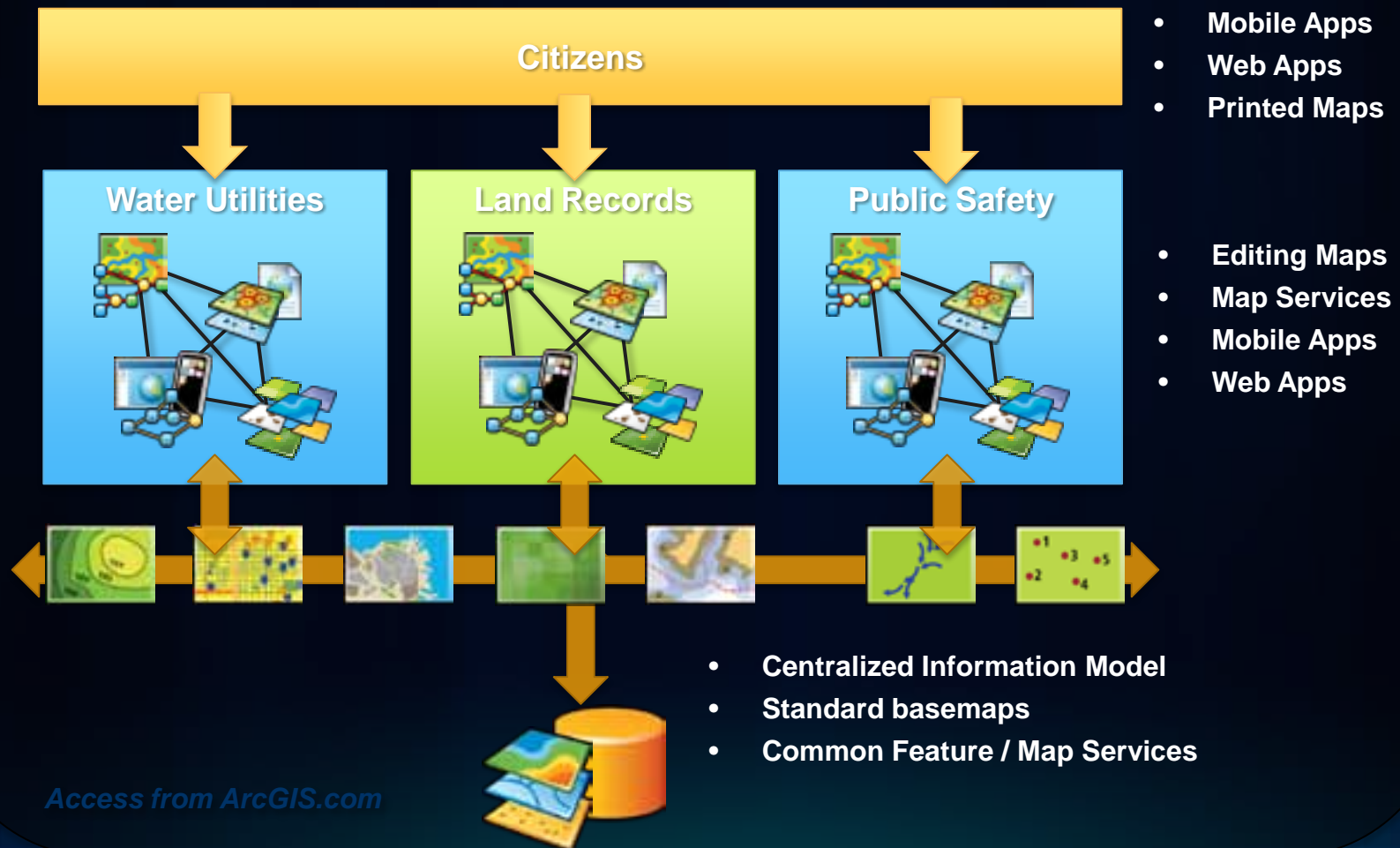
Foundation for Land Records Solution

- **Parcel management tools in core**
 - Fully supported and incrementally enhanced
- **Optimized data model for parcel management**
 - Streamlines parcel editing workflows
 - Improves data integrity
 - Allows you to improve positional accuracy over time
- **Maps and Apps that extend core ArcGIS platform**
- **Service packages that help you implement solution**

A System View

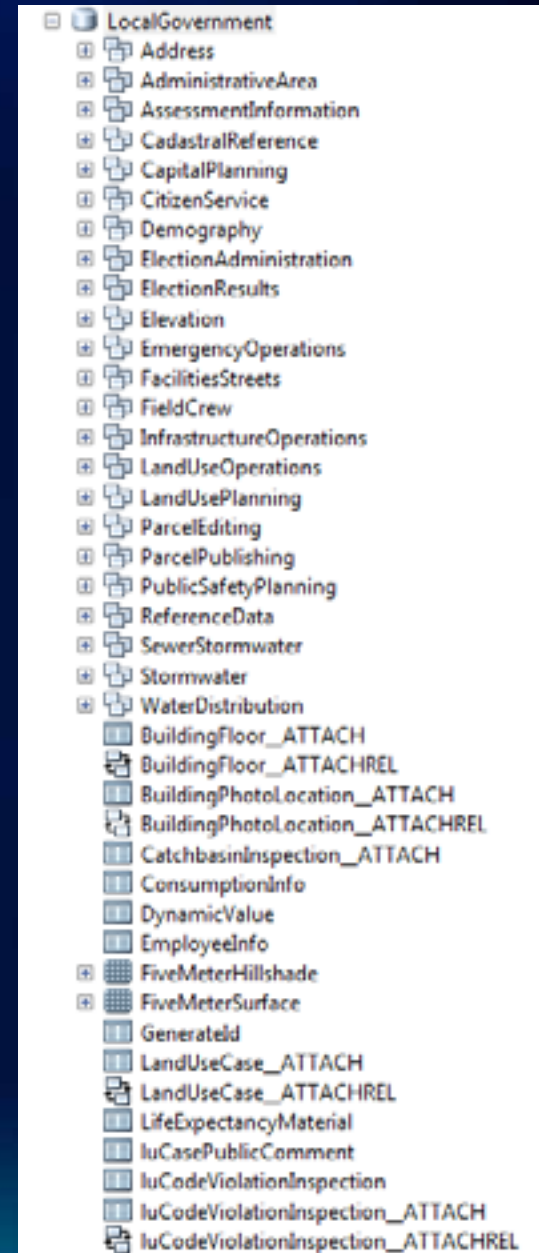
Deploying ArcGIS for Local Government

Access from Maps and Apps website



Local Government Information Model

- **Supports maps and apps**
 - Known local government requirements
 - Easy to adopt and extend
- **Fully documented**
 - Features, layers and packages
- **Central repository, organized around thematic content and logical permission model**
- **Organized access/maintenance patterns**
 - GDB replication, layers and services
- **Safe FME support (coming this summer)**



Implementing ArcGIS for Local Government

Getting started is quite easy



Identify business priorities



Identify business requirements



Migrate data to information model



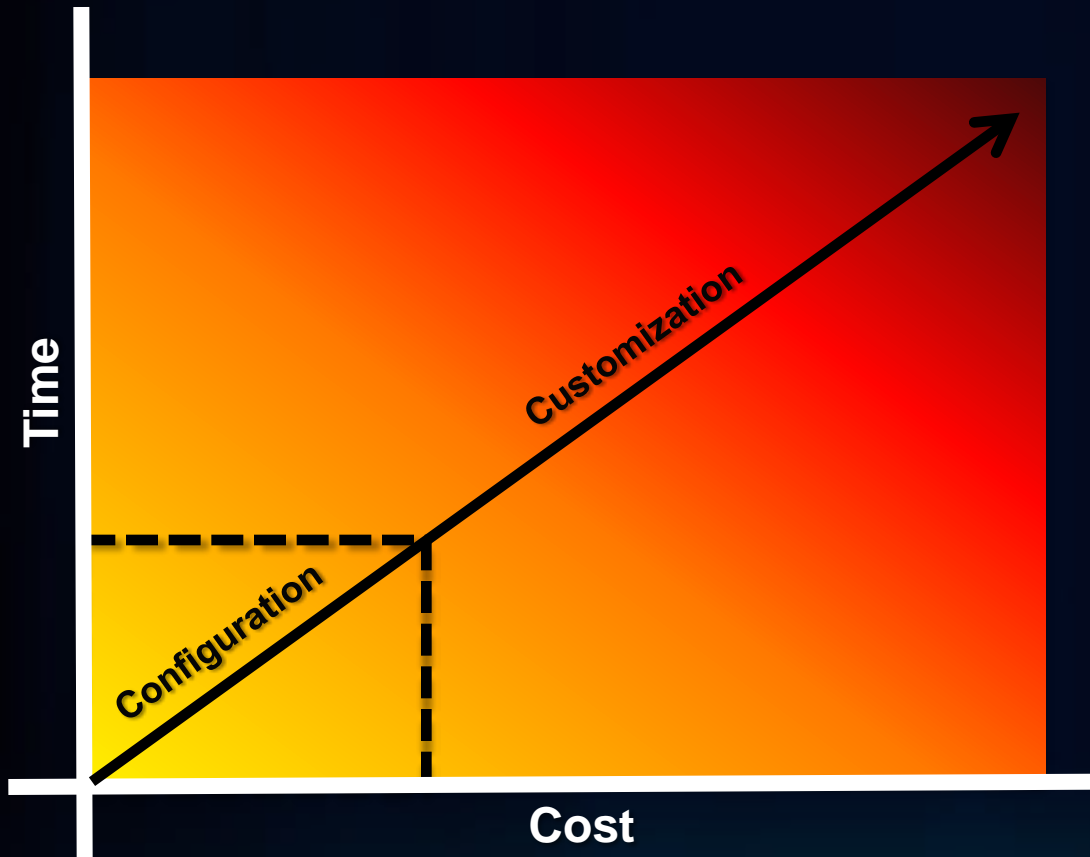
Publish your Maps



Configure and deploy the apps

Configure vs. Customize

Reduce cost, time and risk



Benefits

- Implement quickly
- Easy to add new features
- Simple to maintain
- Easy to extend

.....your feedback affects future releases

What's Next

Additional maps and apps

- **Public Works / Water Utilities**
 - Stormwater Assessment
- **Planning & Development**
 - Address Maintenance
- **Land Records**
 - Operations Dashboard
 - Tax Parcel Viewer (v.2)
- **Public Safety**
 - Flood Response / Management

What's Next

Productizing the ArcGIS for Local Government system

- Quarterly release schedule
- Online Help documentation
- On-premise offering
 - Simple to install and configure
- Cloud offering
 - Synchronized w/ 10.1 Release
- Complimentary Partner offerings
 - ArcGIS for Local Government Partner Specialty

Summary

- **Our Goals**
 - **Deliver a “land records GIS” that enables your success**
 - **Evolve and grow the collection of apps**
 - **Provide a platform for partners to deploy their solutions**
- **We want your participation and involvement**
 - **Download the maps and apps**
 - **Provide feedback on existing content**
 - **Identify opportunities for new content**

Other Sessions @ UC

Tuesday

3:15 - 4:30 - ArcGIS for Land Records - Parcel Maintenance Solution

An introduction to the Esri's Parcel Maintenance solution at ArcGIS 10

Wednesday

8:30 – 9:45 – ArcGIS for Land Records Implementation Examples

An overview of the implementations by the Cities of Calgary and Denver

10:15 – 11:30 – ArcGIS for Land Records - Migrating Your Data

An introduction to the Parcel Fabric data model and data migration strategies

1:30 - 2:45 - ArcGIS for Land Records - Configuring

How to configure the ArcGIS for Local Government land records maps and apps

4:05 - 4:25 - ArcGIS for Land Records - Improving Data Quality

An introduction to a set of ArcGIS Desktop Parcel Editor tools to improve parcel accuracy

Friday

9:00 - 10:15 - ArcGIS for Local Government – An Introduction (Second Offering)

An introduction to the ArcGIS for Local Government maps and apps

Questions

Please fill out your surveys....

www.esri.com/sessionevals



@ArcGISLocalGov



arcgisteamlinalgov@esri.com



esri