



Esri International User Conference | San Diego, CA
Welcome!

Introduction to Explorer Desktop

Mark Bockenhauer & Bern Szukalski

Topics for this session

- **Introduction**
- **Overview of capabilities**
- **New features in latest release (build 1700)**
- **Successful deployment in your organization**
- **Your questions**

ArcGIS Explorer is for knowledge workers...

- **Free to download and deploy**
- **Integrates with your GIS**
- **Facilitates visualization, presentation, and analysis**
- **Can be tuned to support specific users and workflows**
- **Enables you to reach a broad audience**
 - **within and between departments**
 - **throughout your organization and other organizations**
 - **for geographic information users everywhere**

Key Features

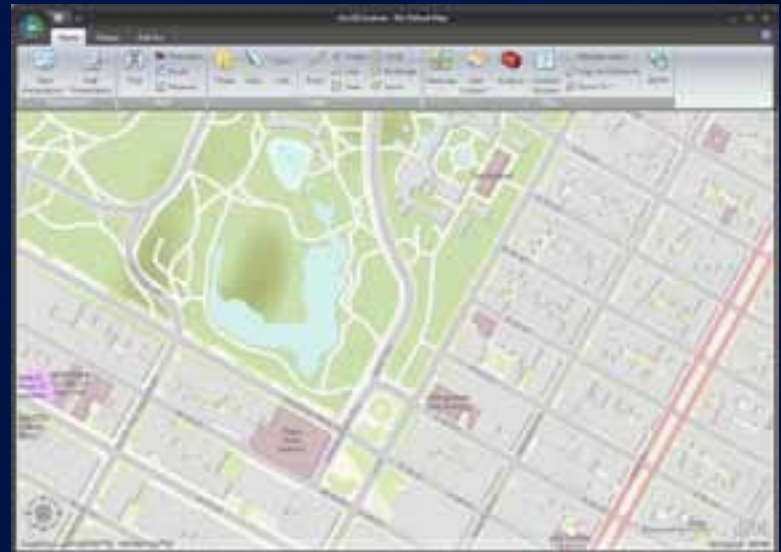
- **Works with all your data**
 - web, local, and enterprise GIS data and services
 - common data (CSV, Excel, GPX, KML/Z, ...)
- **Supports core GIS functions**
 - authoring, query, selection
 - add capabilities via geoprocessing services
- **Configurable (no programming)**
- **Customizable via add-ins (SDK)**

ArcGIS Explorer

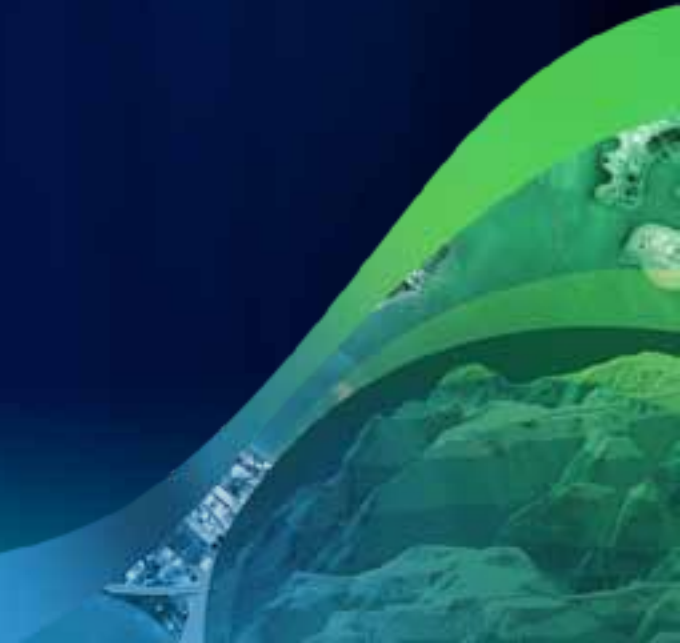
ArcGIS Explorer Online



ArcGIS Explorer Desktop



Overview



Getting Started

- esri.com/arcgisexplorer
- [resources.esri.com /arcgisexplorer](http://resources.esri.com/arcgisexplorer)

1. **Check system requirements**



Run online check utility

2. **Download & install**

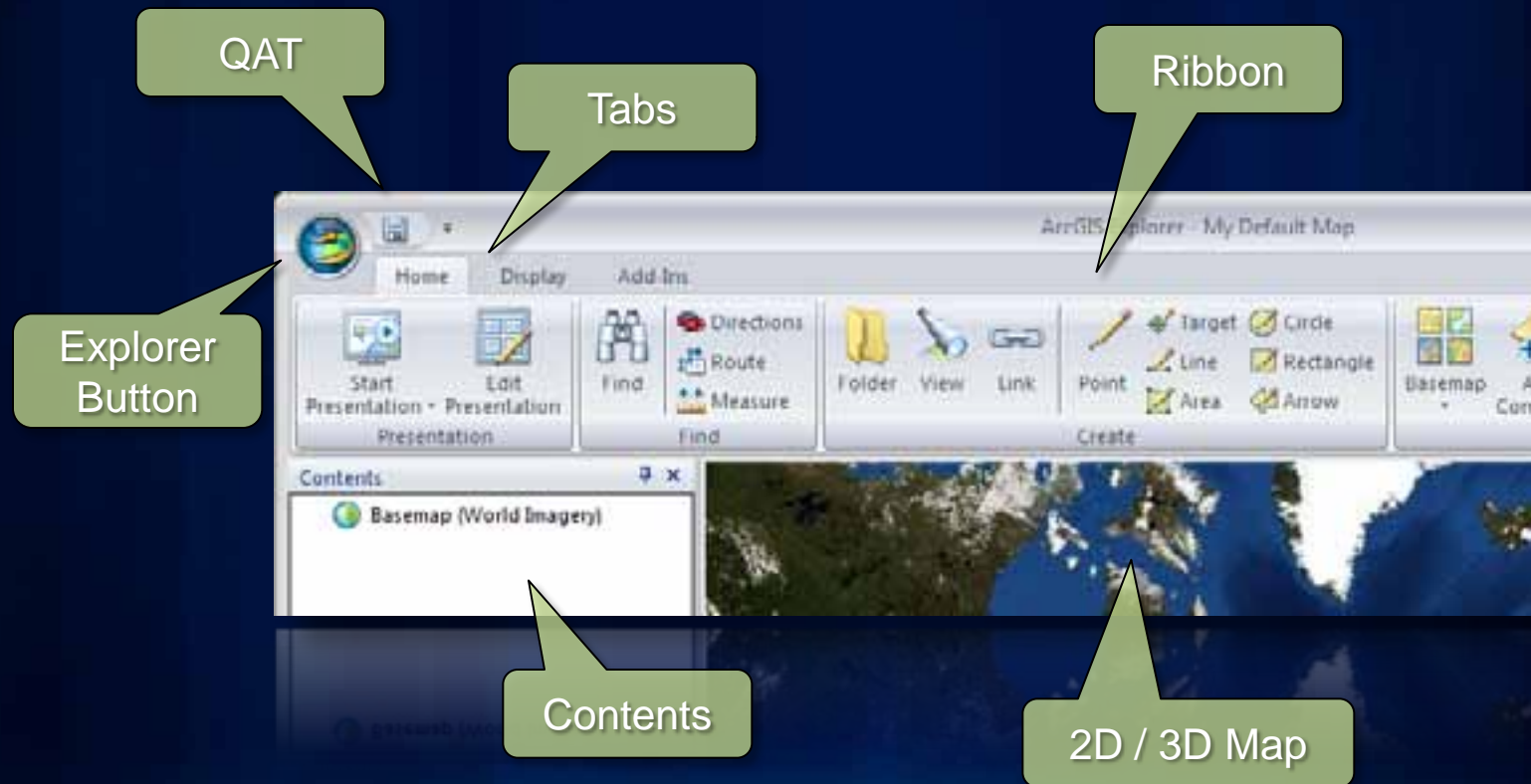
3. **Adjust your preferences**

4. **Make your maps**

A good idea!

Also check for graphics
driver updates!

Application parts



Navigation

The navigator, mouse, and keyboard



To do this	Press
Move left. Turn left while flying.	or
Move right. Turn right while flying.	or
Rotate left.	or +
Rotate right.	or +
Move forward or up.	(up arrow) or
Move back or down.	(down arrow) or
Move straight up.	+ key
Move straight down.	+ key
Zoom in.	or key or + (up arrow)
Zoom out.	or key or + (down arrow)
Tilt up.	or key or + (up arrow)
Tilt down.	or key or + (down arrow)
Reset pivot (tilt) to lock straight down.	
Reset view to fourth.	
Toggle flight.	
Zoom map to full extent.	
Switch target and observer.	
Speed up flying.	
Cancel navigation or any movement.	

Preferences, Properties, Options

Map Properties

- Relative paths
- Coordinate System
- More...

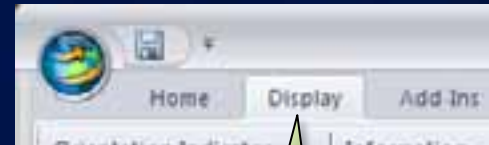
Explorer Options

- Navigation, flight
- Resources
- More...

Display

- Effects (fog, stars, halo)
- Grid, Coordinate readout
- More...

Map Properties
Explorer Options



Display

ArcGIS Online

- Maps, layers, and tools
- Share directly to your ArcGIS Online account



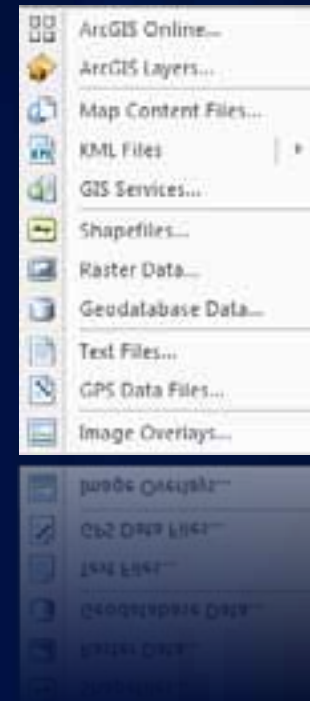
ArcGIS Online Basemap Gallery

- Choose from ready-to-use basemaps
 - ArcGIS Online
 - Esri basemaps
 - Bing™ Maps, OpenStreetMap
- Add and manage your own



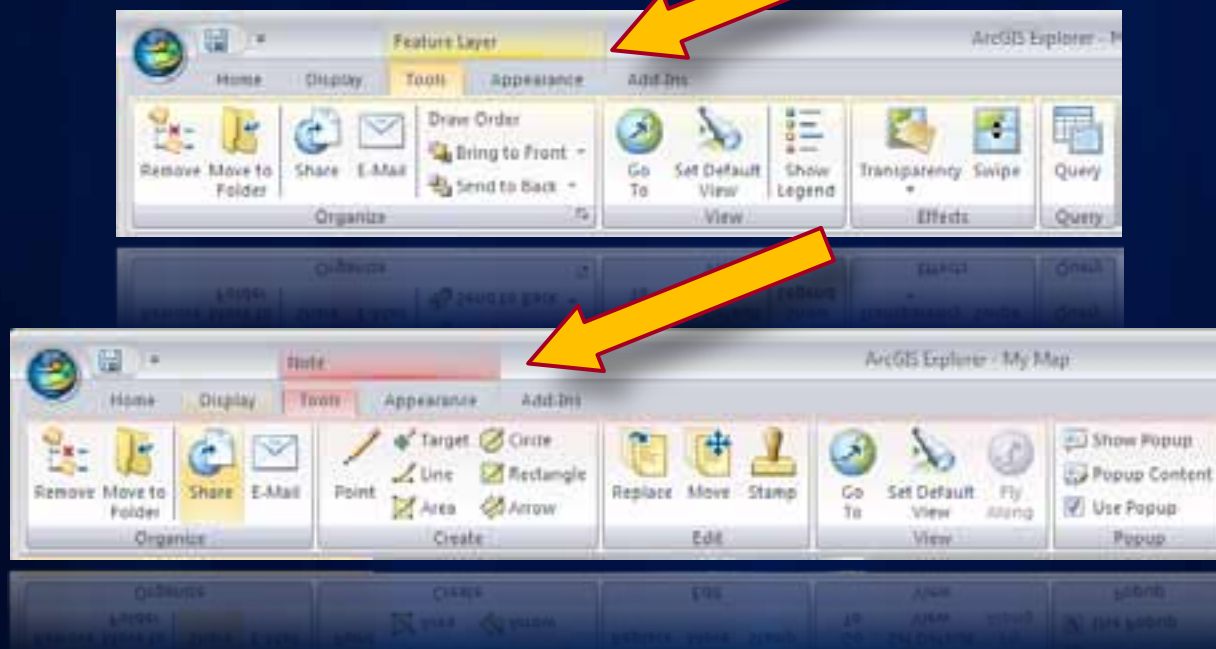
Add Content

- Explorer map content files
- ArcGIS Online
- Layer files (.lyr) and layer packages (.lpk)
- KML, KML network link
- **Services**
ArcGIS Server, ArcIMS, WMS, GeoRSS
- Shapefiles
- Rasters
- Geodatabase
- Text files, GPX, Excel spreadsheets
- Image Overlays



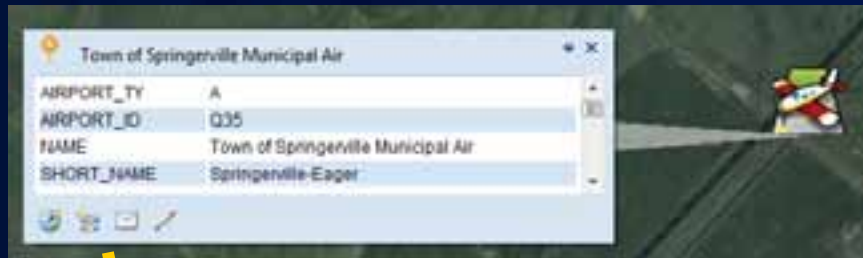
Working with Content

- Use available tabs or context menu
- Tools, choices, and properties will vary depending on content type (contextual)

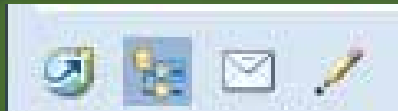


Layer Popups and Properties

- Feature layer popup properties allow choice of fields and how used



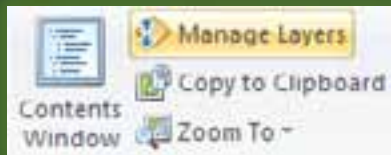
- Go to
- Locate
- E-mail
- Create note



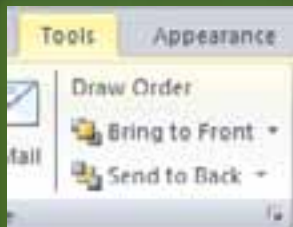
- Service layer popup off unless service includes HTML popup

Manage your layers

- Set drawing order via Manage Layers



- Or control draw order using tools tab

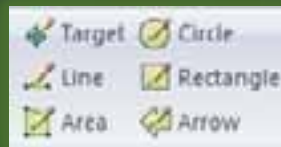


The table of contents organizes layers.

The drawing order is managed here.

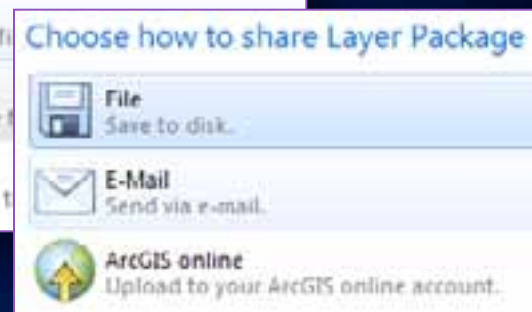
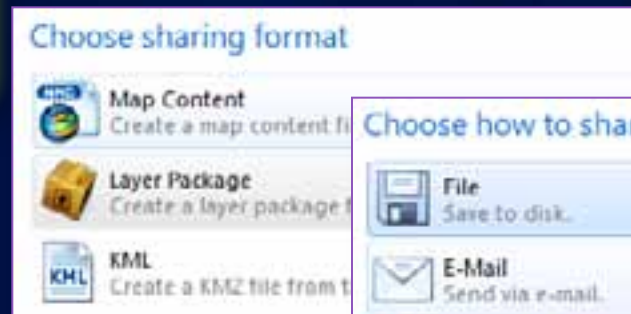
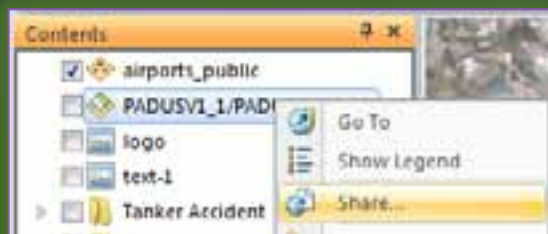
Notes & Popups

- Choose from a variety of styles
- Can be used to integrate other content
 - documents, photos, videos, reports, websites, HTML, ...



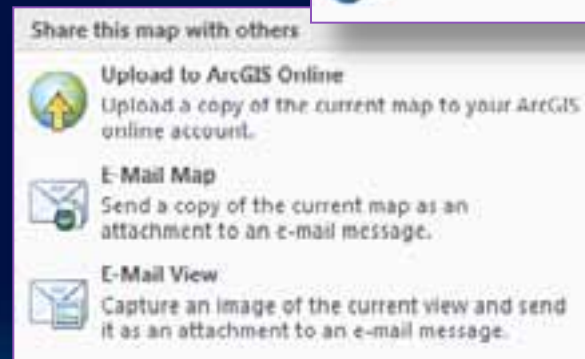
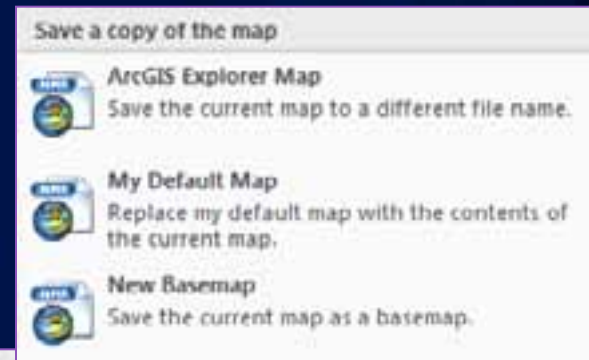
Saving and sharing layers

- Use tools tab ... or right-click to share
 - Layer package, map content file (nmc), or KML
 - Save to file, E-mail, upload to ArcGIS Online



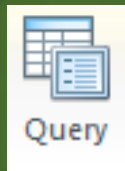
Saving and sharing your map

- Save as new map (map.nmf)
- As the default map (default.nmf)
- As a new basemap (appears in basemap gallery)
- Share to ArcGIS Online
- E-mail map
- E-mail map view



Layer query builder

- Query filter for display of features



Query Builder

Fields	Operators	Value
AIRPORT_TY - String AIRPORT_ID - String NAME - String SHORT_NAME - String FAASITE_NO - String AZ_SYSTEM - String CITY_TOWN - String COUNTY - String ELEV - Double TYPE_USE - String GEO_LATITU - String GEO_LONGIT - String TYPE_OWNER - String	<div>= <> LIKE</div> <div>> >= AND</div> <div>< <= OR</div> <div>NOT</div>	Avi Saguilla Airport <input type="button" value="Use"/> 1st Street/Center Parking Garag Ajo Municipal Airport Avi Saguilla Airport Bagdad Airport Benson Municipal Airport Bisbee Douglas Int'l Airport Bisbee Municipal Airport Bowie Airport <input type="button" value="Get unique values"/>

Select features where...

"NAME" = **Avi Saguilla Airport**

The query has been updated and must be tested.

[Help about Query Editor](#)

Query Builder

Fields	Operators	Value
AIRPORT_TY - String AIRPORT_ID - String NAME - String SHORT_NAME - String FAASITE_NO - String AZ_SYSTEM - String CITY_TOWN - String COUNTY - String ELEV - Double TYPE_USE - String GEO_LATITU - String GEO_LONGIT - String TYPE_OWNER - String	<div>= <> LIKE</div> <div>> >= AND</div> <div>< <= OR</div> <div>NOT</div>	Avi Saguilla Airport <input type="button" value="Use"/> 1st Street/Center Parking Garag Ajo Municipal Airport Avi Saguilla Airport Bagdad Airport Benson Municipal Airport Bisbee Douglas Int'l Airport Bisbee Municipal Airport Bowie Airport <input type="button" value="Get unique values"/>

Select features where...

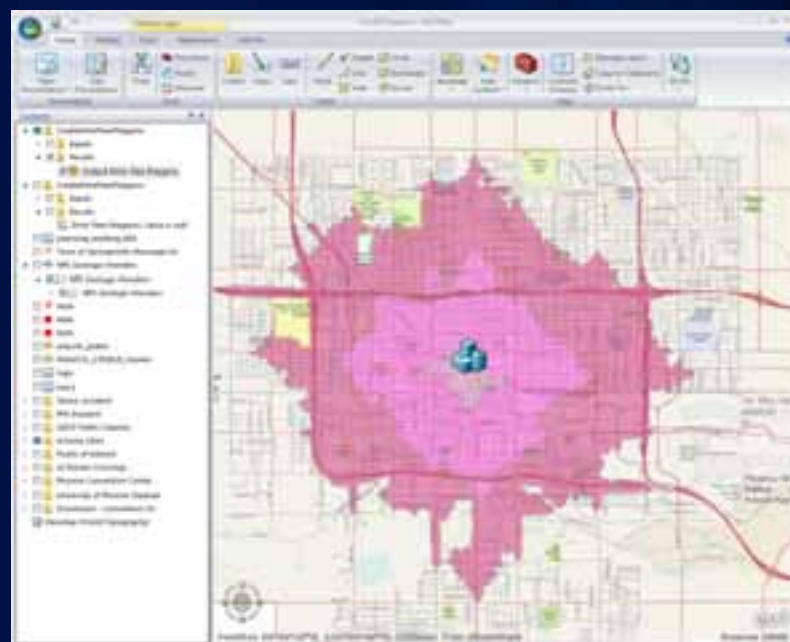
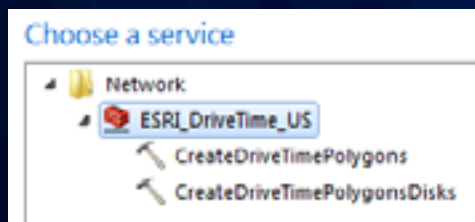
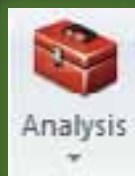
"NAME" = **Avi Saguilla Airport**

The query has been updated and must be tested.

[Help about Query Editor](#)

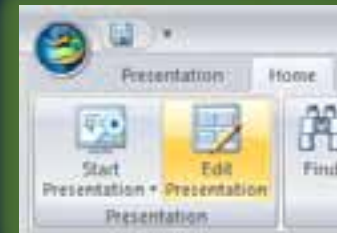
Analysis Gallery

- Connect to ArcGIS Server that publishes GP services
- Manage tools in gallery



Presentations

- Use any map item
- Slides capture drawing states, views, popups, etc.
- Add captions, map overlays
- Set options
 - Set time intervals for auto-play
 - Startup map in presentation mode
- Advance using prezto tools or using space bar



Presentations are live, so you can navigate and interact during a presentation, and data can change!

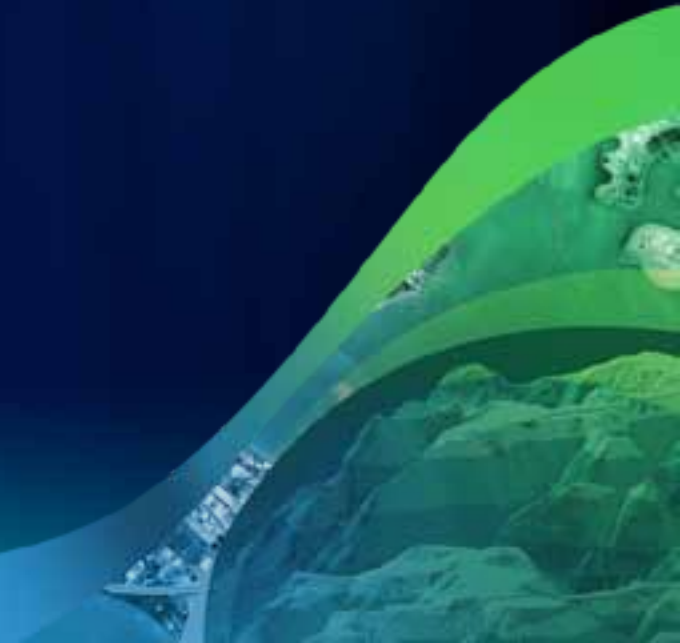
Presentations



Demonstration

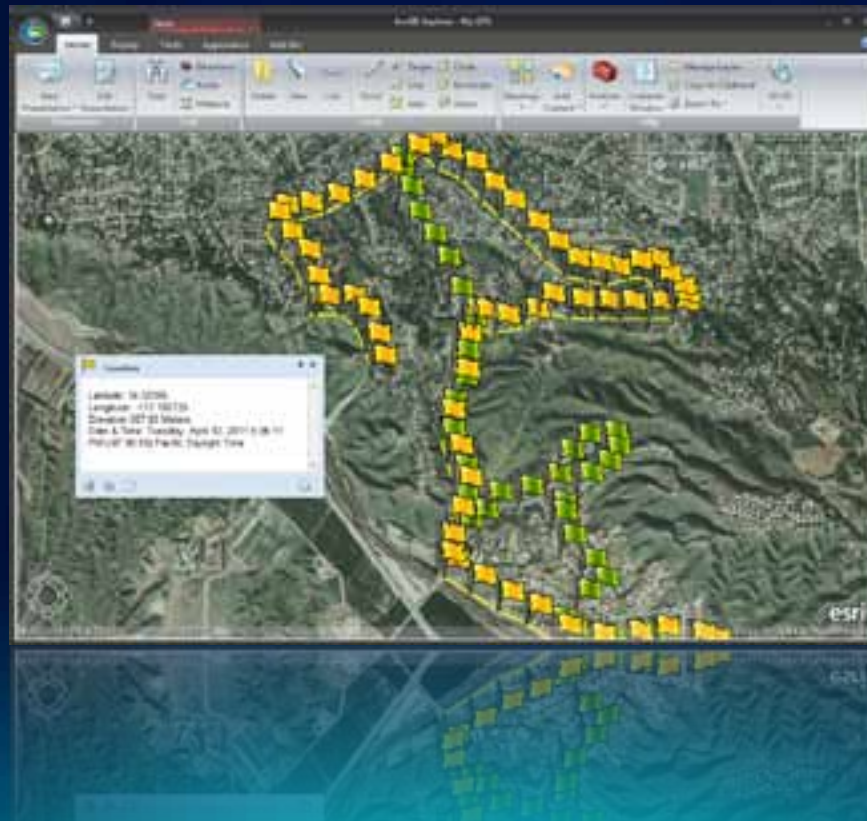


What's New



GPS Integration

- Any GPS device (NMEA) can be connected
- Manage display of real-time track and waypoints



Spatial Selection

- Use any shape to query features
- Contains, intersects, within, more



Raster Georeferencing

- 3-Point (affine) transformation
- TIFF, JPEG, PNG, GIF, BMP

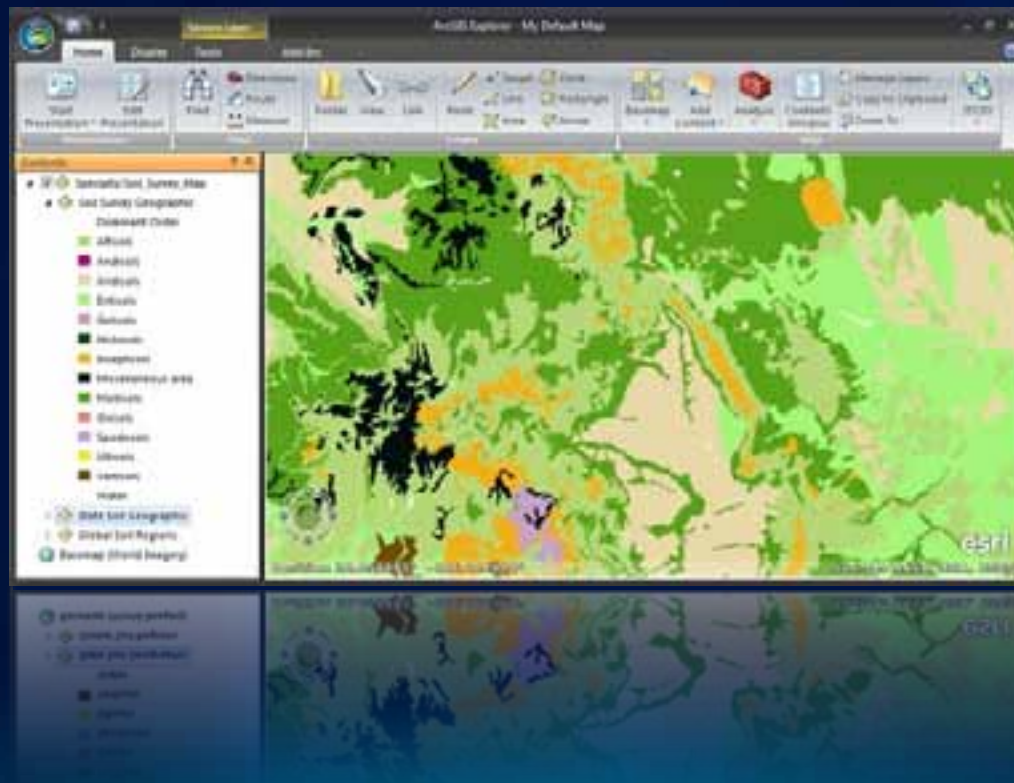


Geotagging

- **Geotagged photos can be directly added**
- **Non-geotagged photos can be interactively tagged**

Legend in Contents

- **Click layer name to display**



Portal Connections

- **Connect to Organizational Portal**
- **Connect to on-premises ArcGIS Portal**

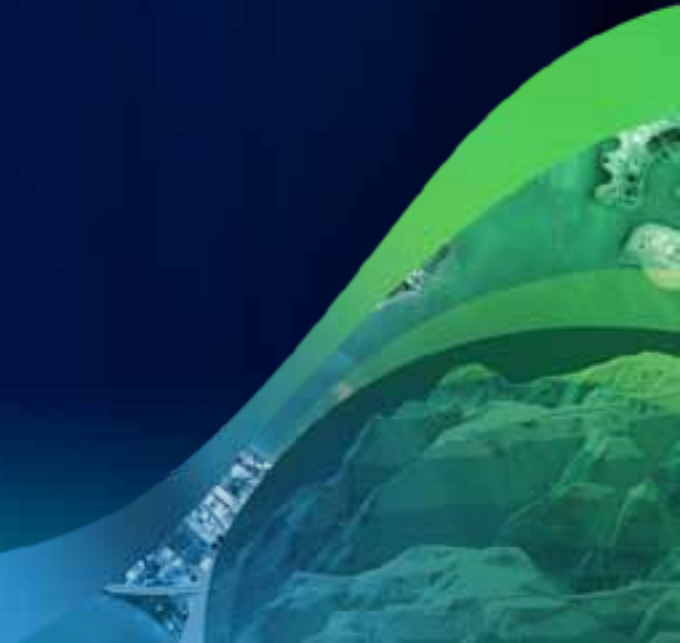
Other features and improvements

- Improved sublayer control
- KML improvements, including spatial selection
- Query by attribute for layer packages
- Better contents control via <ctrl>-click
- Shift-drag zoom box
- Separators in app config tabs
- Improved layer cache management
- ArcGIS Online updates
- Terminal servers (Citrix Xen App) supported
- Update help, bug fixes

Demonstration

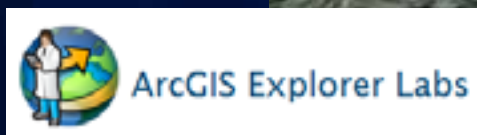


Configuring & Organizational Deployment



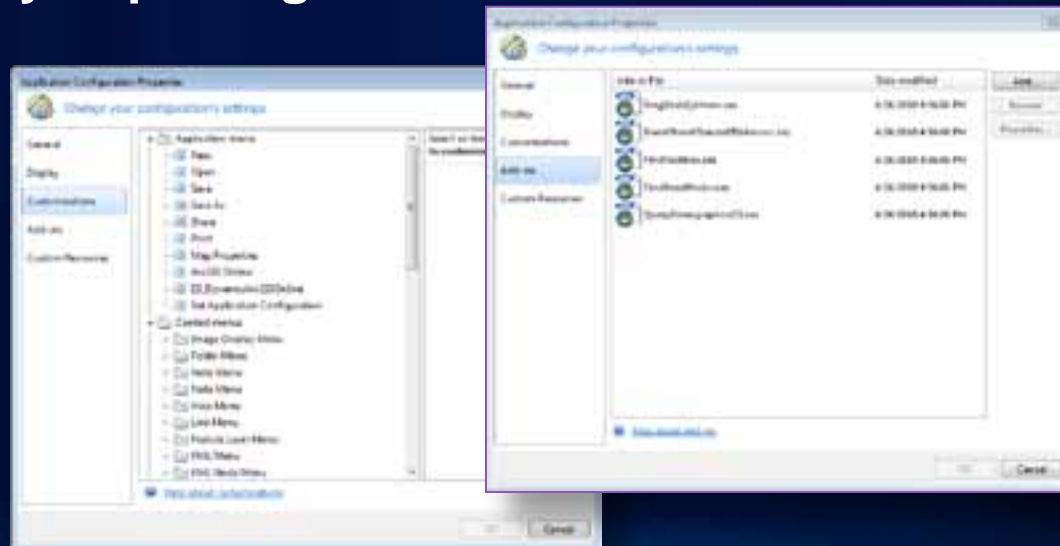
Add-ins

- Built using Explorer SDK and Visual Studio
- Managed through Advanced Resources or application configuration
- Many examples available from Explorer Labs group



Application Configurations

- Edited / managed via Application Configuration Manager
- Enables custom ribbons, add-ins, logos, splash screen and more ...
- Easiest way to package customizations



Demonstration



ArcGIS Explorer Resources

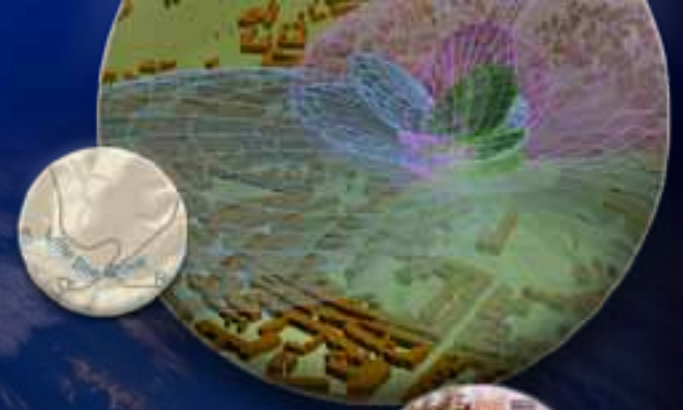
- Resource Center
 - <http://resources.esri.com/arcgisexplorer>
- ArcGIS Explorer Blog
 - <http://blogs.esri.com/Info/blogs/arcgisexplorerblog/>
- ArcGIS Online
 - <http://www.arcgis.com>



In Summary ...



Thank You!



Please submit evaluations
www.esri.com/sessionevals



Successful Presentation Guidelines

- Know your target audience
- Use slides to **lead** not read
 - Use a key phrase or a few words
 - Avoid more than two levels of bullet points
- Use title slides for each section
 - Make it clear where you are going
- Avoid too much animation—Keep it simple!

Additional ESRI presentation resources available on ArcZone
<http://arczone/resources/presentations.cfm>

Migrating to the New Template

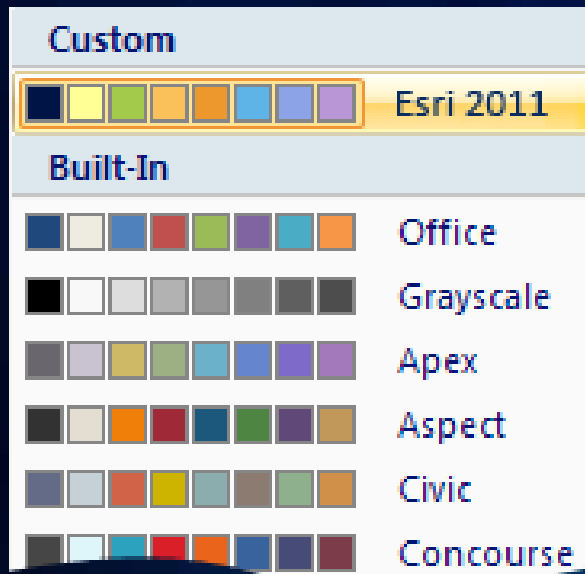
This template was rebuilt from scratch and fixes problems found in previous versions.

- **Download the instructions and support files from**
<http://arczone/resources/presentations.cfm>

Color Guidelines

Color Swatches

Use **Esri 2011** as theme colors
(see presenter's notes for the instruction of how to add the Esri theme and theme colors)



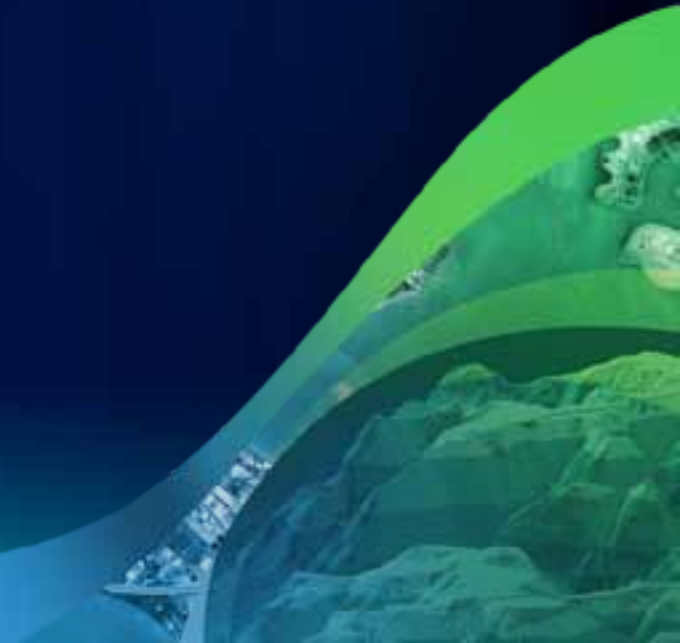
Projector Color Guidelines

Use the **sRGB** video mode on the projector.
Most projectors have this setting.

Additional ESRI presentation resources
available on ArcZone
<http://arczone/resources/presentations.cfm>



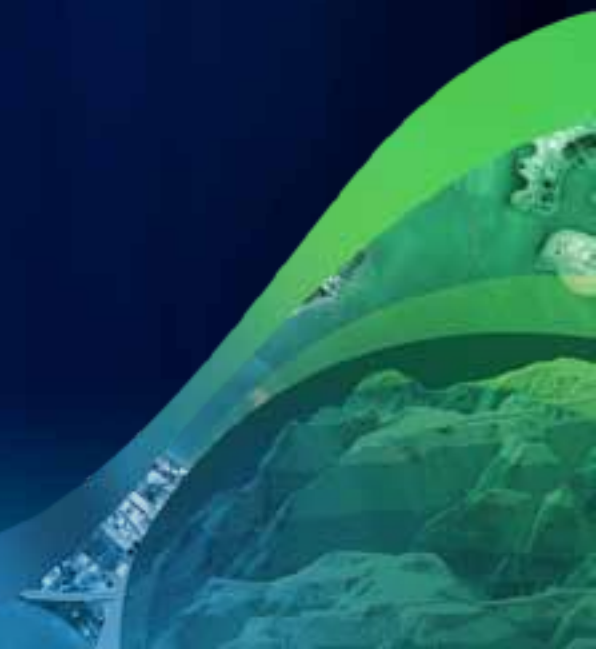
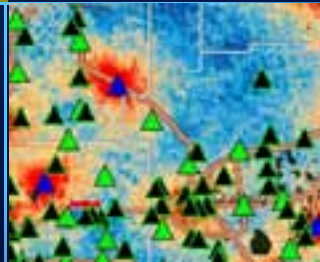
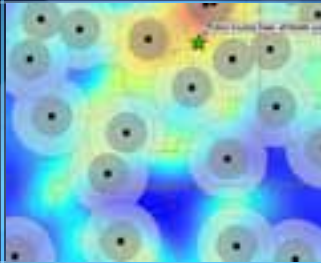
Esri International User Conference | San Diego, CA
July 12–16, 2011





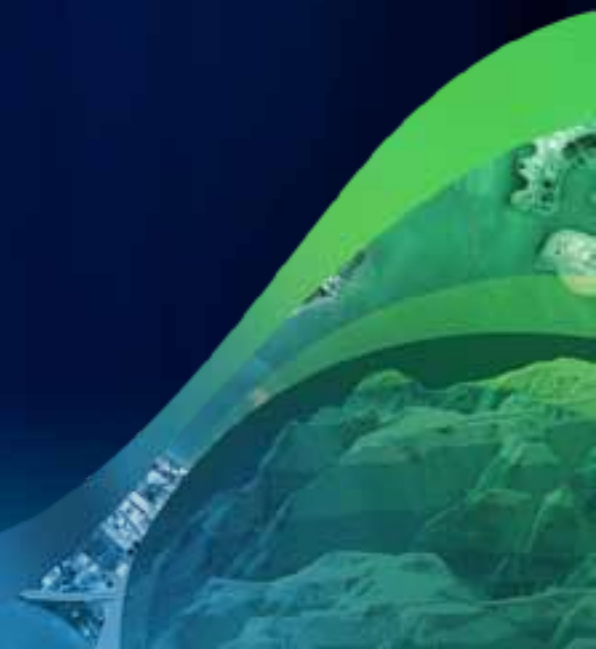
DeKalb County Board of Health

Fulton County Dept. of Health and Wellness/District 3, Unit 2, Office



DeKalb County Board of Health

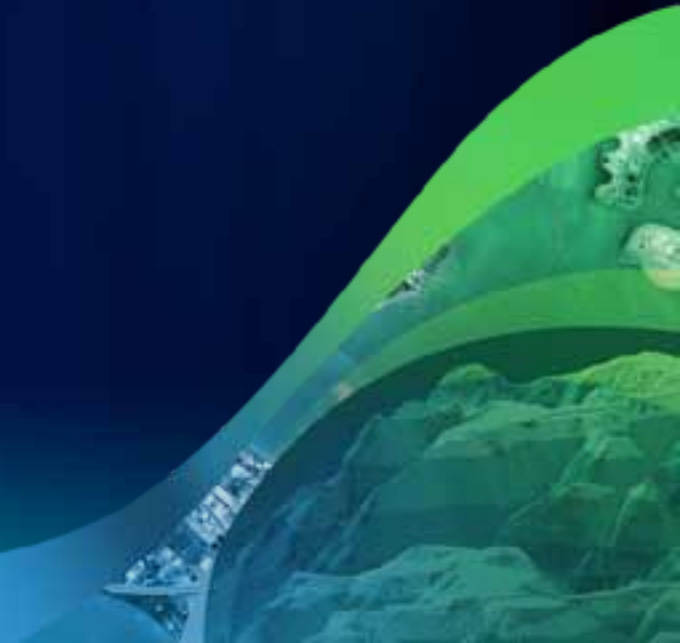
Fulton County Dept. of Health and Wellness/District 3, Unit 2, 06/2014



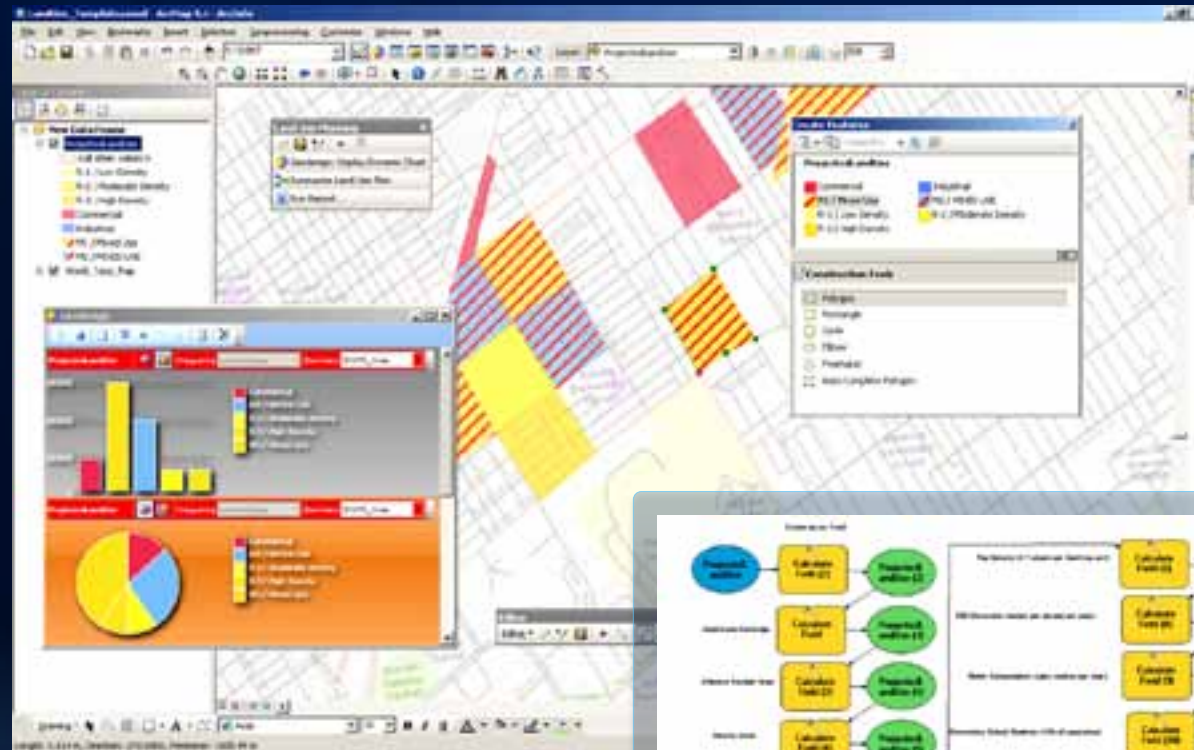


esri

Sample Maps

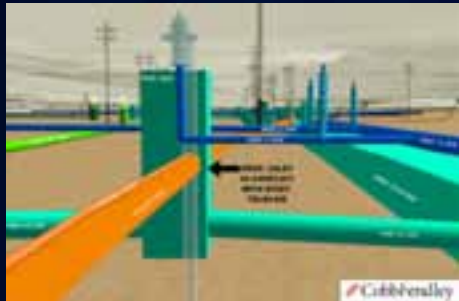


Sample Screenshots Layout *(preferred)*



Sample Screenshots Layout

Underground Utilities



Texas

Utility Network



Germany

University



Pennsylvania

Building/Room



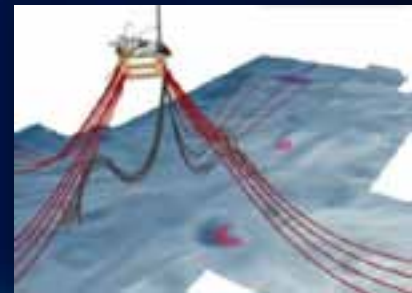
Panama

Railroads



Switzerland

Oil Platform



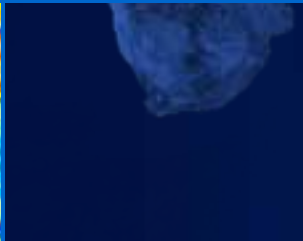
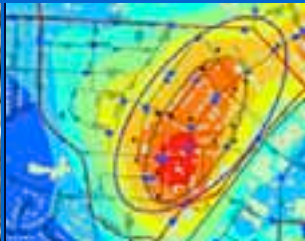
Norway

Grids for Images/Screenshots (may ask designer for assistance)

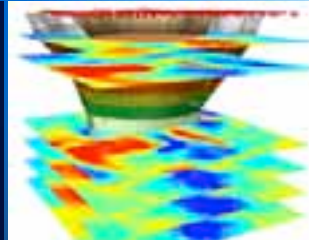
environmental
conservation



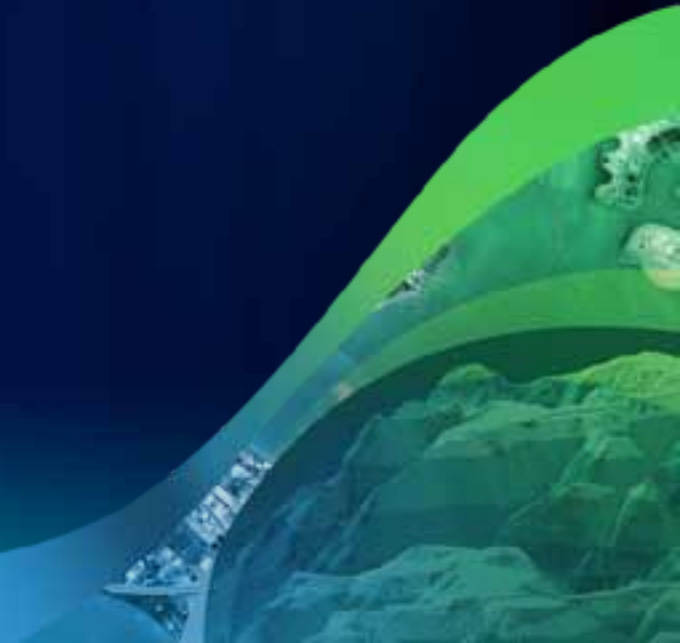
disaster
response



demographic
analysis

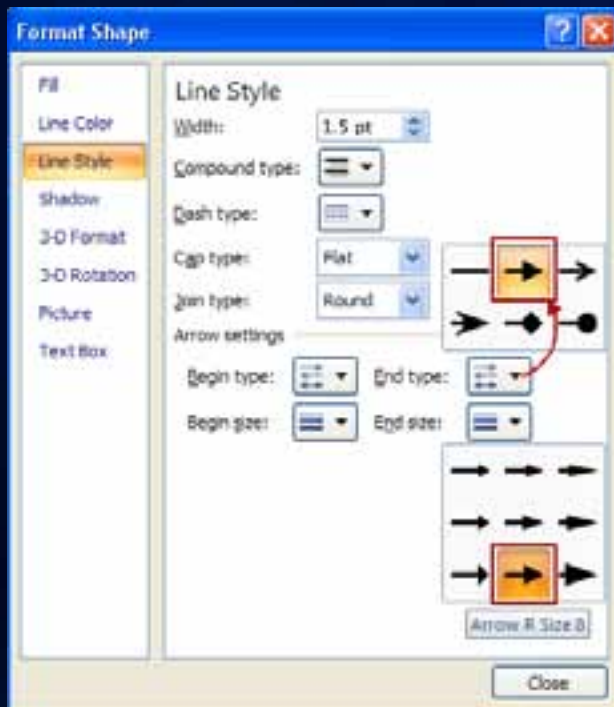


Diagrams/Icons

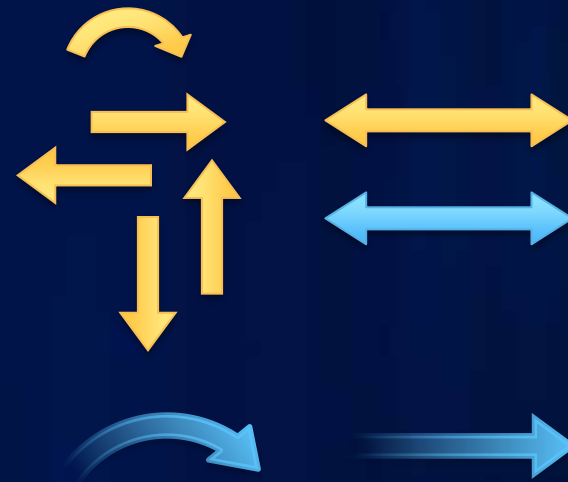


Arrows

Arrows for Connecting Items



Arrows for Connecting Large Concepts



Shapes for Diagrams

Quick Style:
Subtle Effect

ArcGIS

ArcGIS

ArcGIS

ArcGIS

ArcGIS

ArcGIS

Quick Style:
Moderate Effect

ArcGIS

ArcGIS

ArcGIS

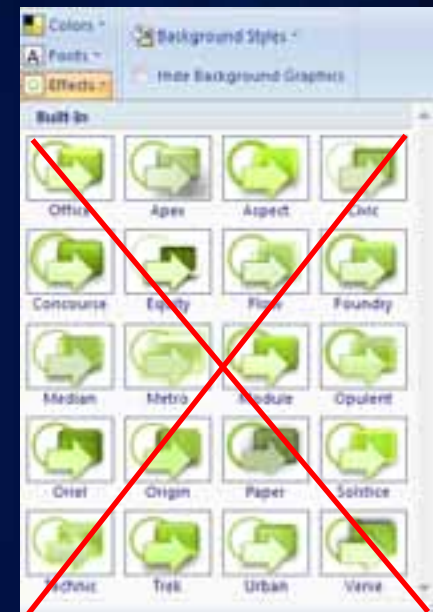
ArcGIS

ArcGIS

ArcGIS



**DON'T APPLY EFFECTS
from the Design tab**



Shapes for Diagrams *(continued)*



Cloud optimized for use behind diagrams



Cloud for general diagram



Circle behind a group of objects

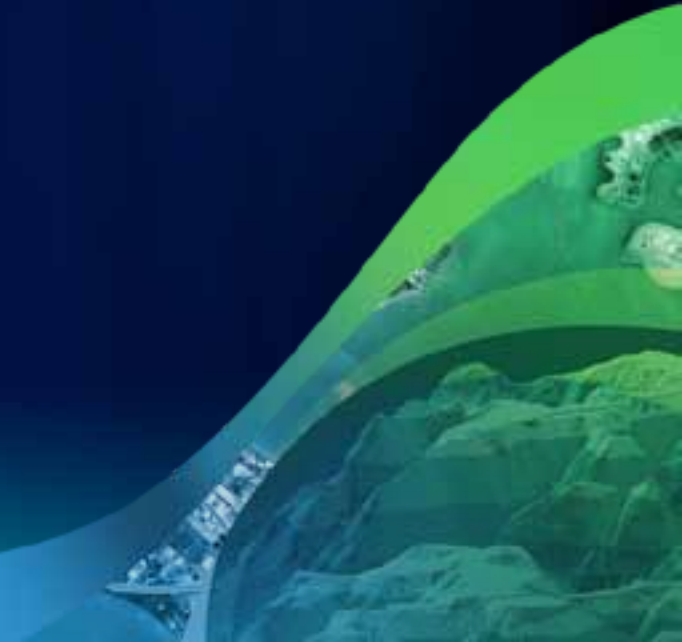


Content box for each tier
(see sample diagrams)



Optional: Use as a frame
around showcased
screenshots

Sample Diagrams



ArcGIS Implementations

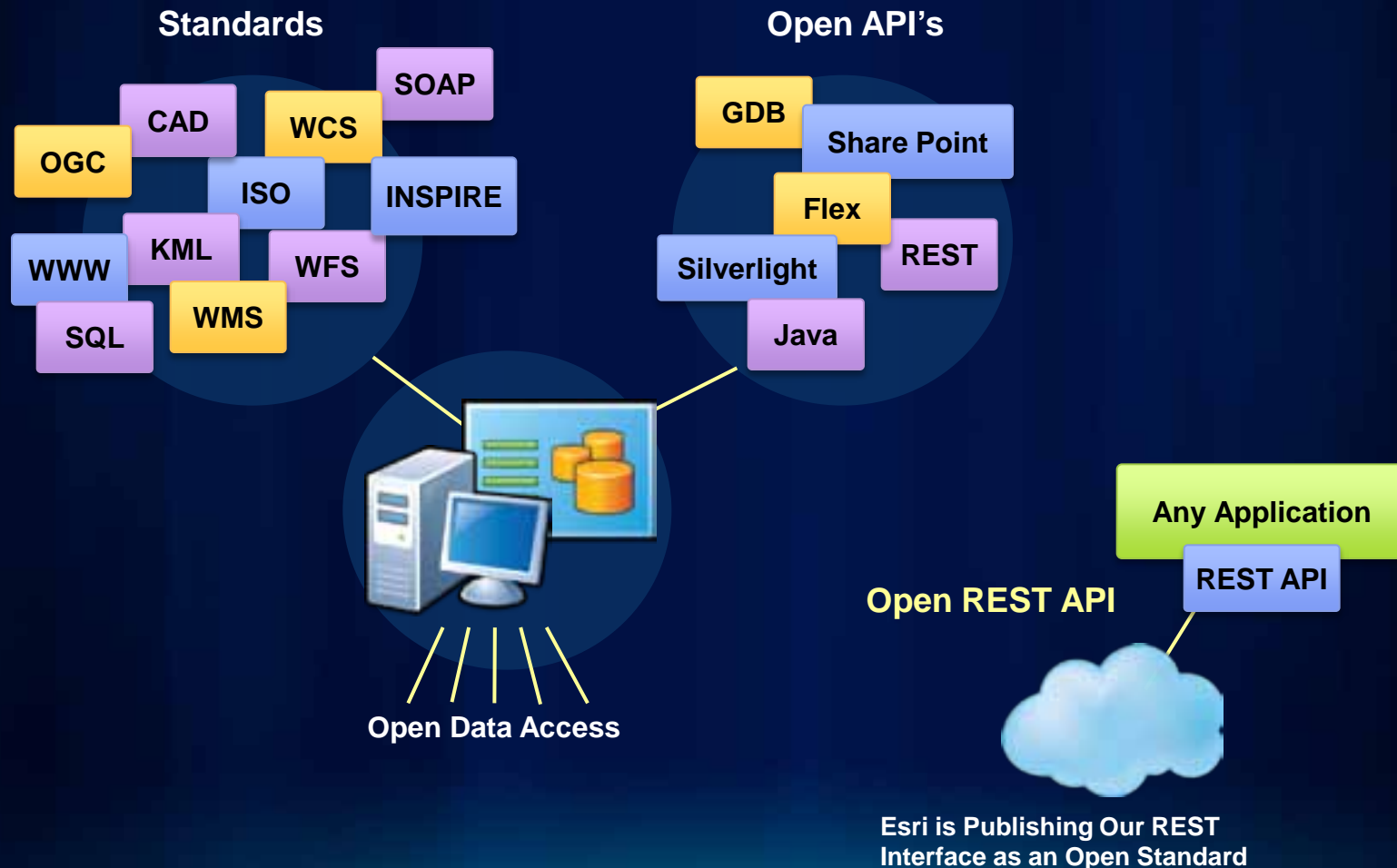


ArcGIS 10 — A Complete System

**Easier
More Powerful
and Everywhere**



Quick Style — Moderate Effect



Access the Entire Icon Library

Over 160 items added in 2010

- 430 total icons available for Esri use
- Browse and search from any Microsoft Office application
- Accessible when you're connected to the Esri Network
- Also available offline as directories of PNG files
- See the presenter notes below for details



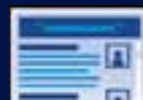
A Selection of Frequently Used Icons



ArcGIS Desktop



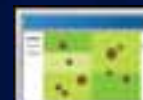
ArcGIS Online



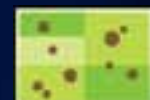
Web Blog



Web Blog



Mashups



Mashups



Browser



Open Standards



ArcGIS Desktop
Authors



Web Map



Web Map



Map



Web Map



Map



Web Map



Map



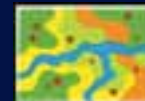
Raster Files



Raster Files



Web Map



Map



Web Map



Map



Web Map



Map



Web Map



Map



Web Map



Map



Explorer



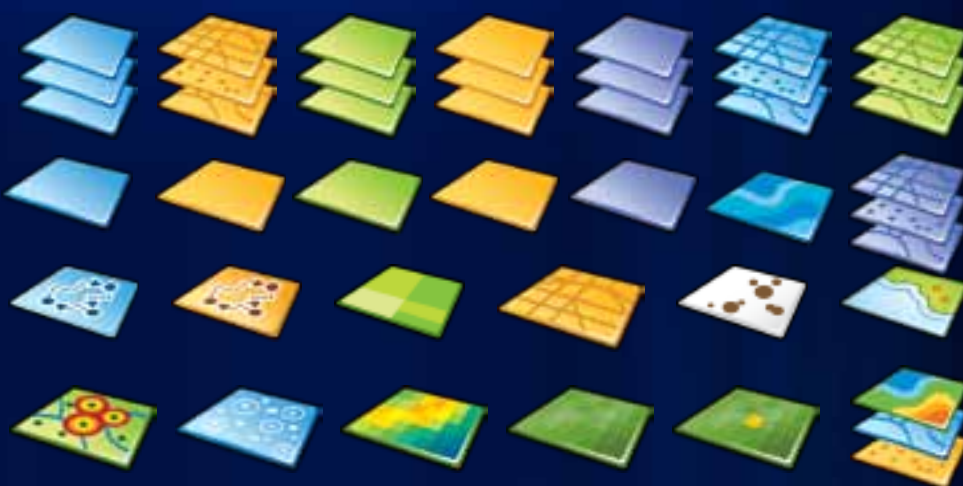
Web Map



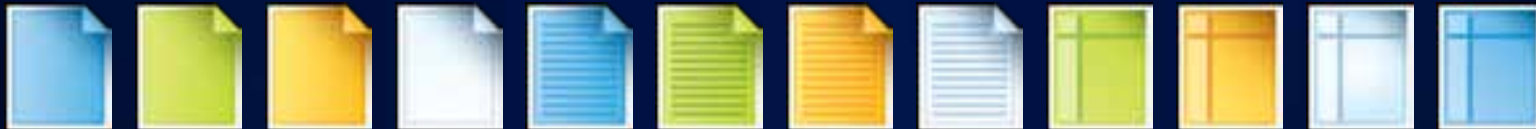
Globes



Databases



Layers



Files



Table



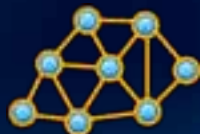
Files

CD/DVD

Internet/Cloud



Legend



Network



Models



Designing
& Planning



Situational Awareness



Professional Services



Professional
Services



Education



Education



Business
Partner



Mobile GIS User



GIS User





Data Server



Data Appliance



GIS Users



Geodatabase



Web GIS



Mashups