



**Esri International User Conference | San Diego, CA**  
**Technical Workshops |**

# **ArcGIS for iOS**

Jeff Shaner and Russ Roberts



# What is mobile GIS?

*Extends the reach of ArcGIS from the office to the field*

- With a mobile GIS solution you can
  - Carry your maps to the field
  - Collect and Update Geographic Information
  - Track and Geo-collaborate



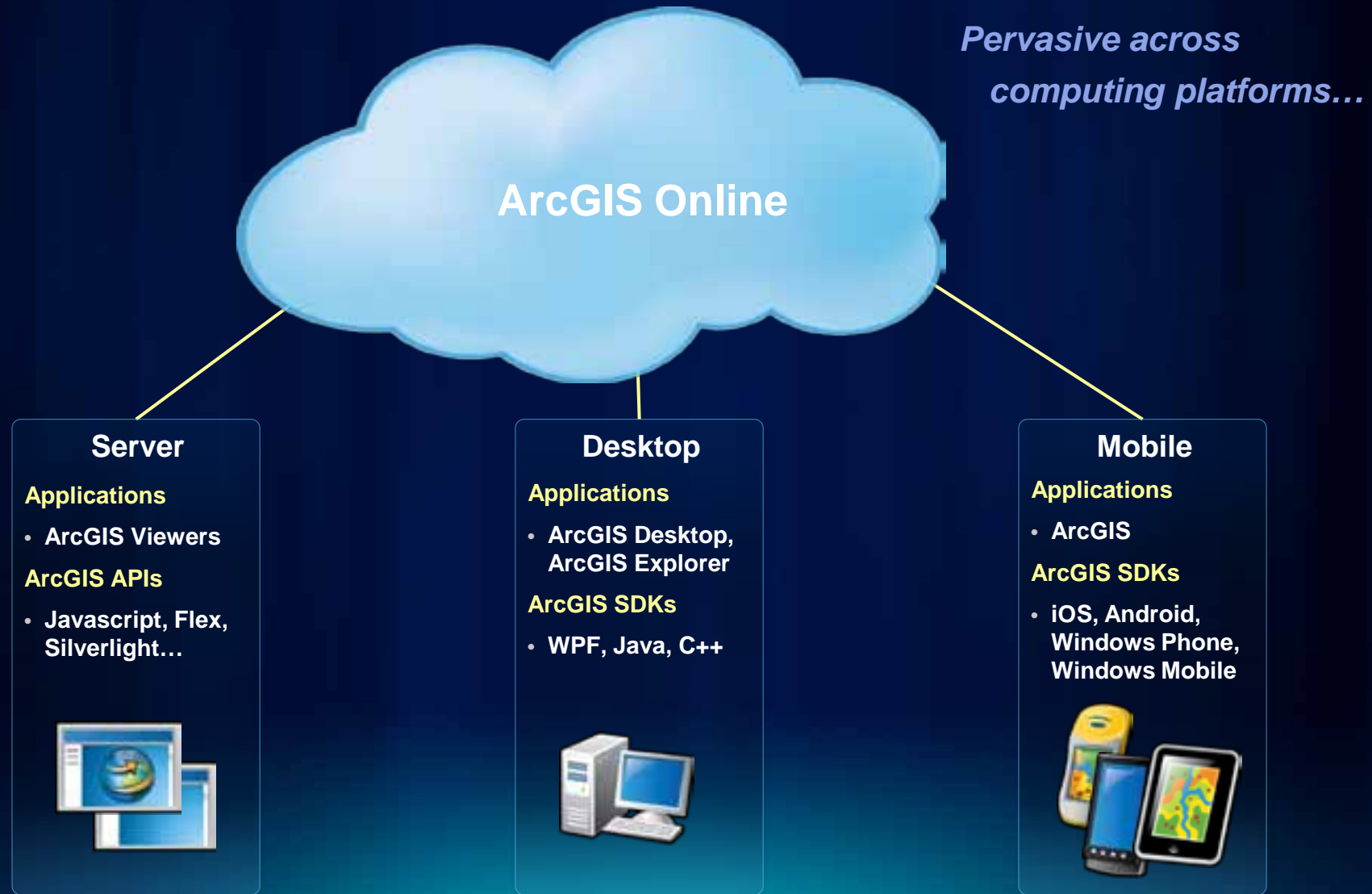
# What are the benefits of mobile GIS?

*Leverages the investment of your enterprise GIS*

- **Improve Efficiency and Accuracy of Field Operations**
- **Rapid Data Collection and Seamless Data Integration**
- **Replaces paper based work flows**
- **Helps to Make Informed and Timely Decisions**



# The ArcGIS System



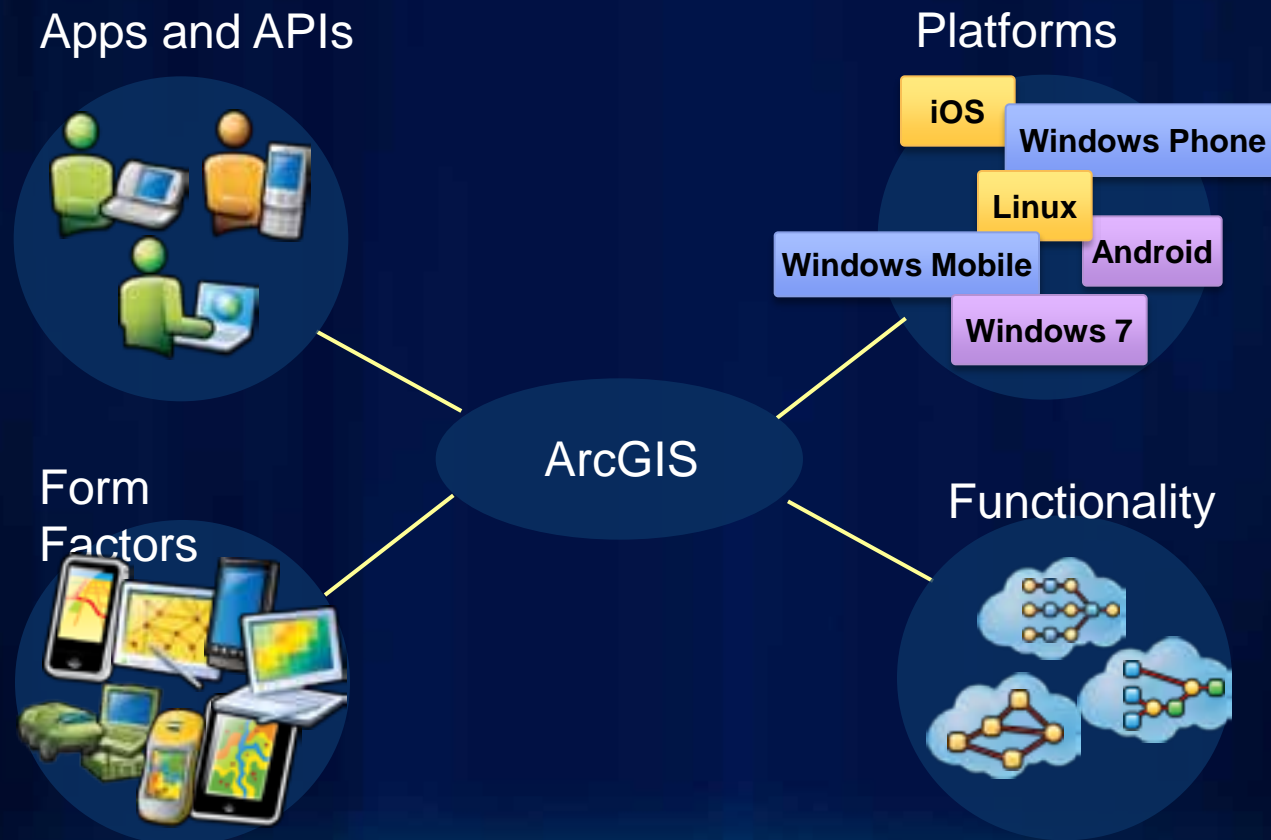
# Lightweight Applications and Runtime SDKs

Configurable COTS applications and Native ArcGIS Runtime SDKs

iOS	Android	Windows Phone	Windows Mobile	Windows	Linux
<b>Applications</b> <ul style="list-style-type: none"><li>• ArcGIS</li></ul>	<b>Applications</b> <ul style="list-style-type: none"><li>• ArcGIS</li></ul>	<b>Applications</b> <ul style="list-style-type: none"><li>• ArcGIS</li></ul>	<b>Applications</b> <ul style="list-style-type: none"><li>• ArcGIS</li></ul>	<b>Applications</b> <ul style="list-style-type: none"><li>• ArcGIS Explorer*</li></ul>	<b>Applications</b> <ul style="list-style-type: none"><li>• None</li></ul>
<b>Runtime SDK</b> <ul style="list-style-type: none"><li>• Objective C</li></ul>	<b>Runtime SDK</b> <ul style="list-style-type: none"><li>• Java</li></ul>	<b>Runtime SDK</b> <ul style="list-style-type: none"><li>• Silverlight</li></ul>	<b>Runtime SDK</b> <ul style="list-style-type: none"><li>• .NET</li></ul>	<b>Runtime SDK</b> <ul style="list-style-type: none"><li>• WPF, Java</li></ul>	<b>Runtime SDK</b> <ul style="list-style-type: none"><li>• Qt, Java</li></ul>
					

# Esri Mobile Technologies

*Mobile capabilities of the ArcGIS system*





# Esri Mobile Products

*ArcGIS running on ...*

ArcGIS for Windows Mobile



ArcPad

Rugged Devices



iOS



Microsoft  
Windows Phone



Android



Smartphones and Tablets

# ArcGIS on Rugged Devices

## *Windows and Windows Mobile Devices*

- Designed for harsh field conditions
- One handed/vehicle-mounted use
- Occasionally connected workflows
- High accuracy data collection
  - GPS integration
  - Laser integration
- Replace Paper Surveys
  - Intelligent forms
  - Barcode integration



Water Facilities Mapping

Asset Maintenance/Inspection

First Responders

Land Management



# ArcGIS Products for Rugged Devices

## *Windows and Windows Mobile Devices*

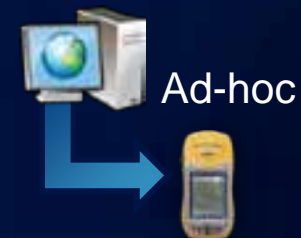
### ArcGIS for Windows Mobile

- Focused Mobile Applications
- Task-based, defined workflow
- High Accuracy Data Collection
- Users have little GIS training
- Scalable to large field workforce



### ArcPad

- Ad-hoc Mobile Application
- High Accuracy GPS Workflow
- Targets small/mid-size org
- Users typically have GIS Training



# ArcGIS on Smartphones and Tablets

iOS, Windows Phone and Android Devices

- Designed for touch-screen phones
- One handed use
- Connected Workflows (Wifi, 3G)
- Assisted-GPS Integration
- Replace Paper Surveys
  - Intelligent forms
  - Field Validation
  - Media Integration

Emergency Operations

Service Requests

Parcel Valuation

VGI

Campus Maps



# Who is ArcGIS for iOS for?

## Existing ArcGIS Customers with iOS devices

- Customers of Enterprise GIS
- Consumers of Community Maps
- GIS developers
- ESRI partners



## iOS Community

- Consumers of Community Maps
- iOS Developers



# ArcGIS on Smartphones and Tablets

iOS, Windows Phone and Android Devices

## ArcGIS Application

- Maps shared across devices
- Display, Query, Edit intelligent maps on all devices
- Available Free in stores and marketplaces

## SDK

- Embed ArcGIS into existing applications
- Native APIs for building focused applications
- Common conceptual framework across platforms
- Available Free for development via EDN



# ArcGIS Application

- ESRI's first iOS application
- Universal Application:
  - iPad
  - iPhone
  - iPod Touch
- Works with maps:
  - ArcGIS Online
  - On Premise Content Server



Available on the  
**App Store**



# ArcGIS Application – How is it doing?

- **31,528** downloads after 1 week  
(Mon July 5<sup>th</sup> – Sun Jul 11<sup>th</sup>)
  - #1 Free Productivity App
  - #12 Featured New App
- Over 190,000 downloads
- Supported in 10 languages



*Total counts over week 1 downloads*



*Downloads in over 79 countries!*



# What can the ArcGIS Applications do?

Powerful application functionality driven by configurable maps

- Display maps
- Find and share maps by email, SMS, facebook, twitter
- Switch between base maps and dynamically display a legend
- Find addresses and places
- Identify locations and features from services, csv, shp, gpx, notes
- Query map layers
- Measure distances and areas
- Collect new data and edit GIS features including attachment of media



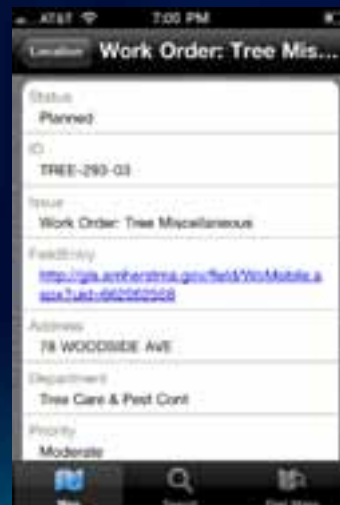
# ArcGIS Application Demo



# Who is Using ArcGIS for iOS?

## City of Amherst, MA

- ArcGIS online group devoted to sharing various maps to city employees:
  - Open Work Orders
  - Water Distribution Network
- Public
  - Trails and Land Conservation



Map ID	ID	Issue	Location	Description	Planned	Details	Status	Action	Closed
Map ID	11	11	11	11	11	11	11	11	11
Map ID	11	11	11	11	11	11	11	11	11
Map ID	11	11	11	11	11	11	11	11	11
Map ID	11	11	11	11	11	11	11	11	11
Map ID	11	11	11	11	11	11	11	11	11
Map ID	11	11	11	11	11	11	11	11	11
Map ID	11	11	11	11	11	11	11	11	11
Map ID	11	11	11	11	11	11	11	11	11
Map ID	11	11	11	11	11	11	11	11	11
Map ID	11	11	11	11	11	11	11	11	11

**How it works...**



# Author Maps

## Leverage the ArcGIS System

### Design your information model for field use

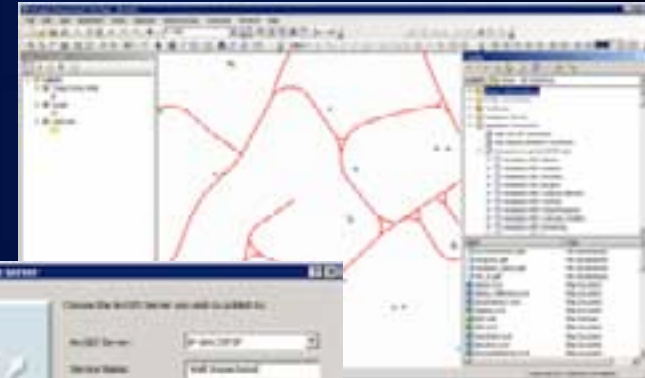
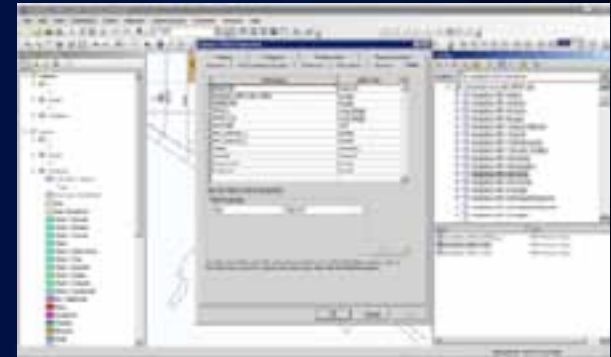
- Coordinate system for spatial data
- Field definition for information to be captured\*\*
- Define transaction model (single/multi-user)

### Author Maps and map layers

- Define and build base map content (orthophotos, landbase, etc)
- Author map layers to define “data dictionary” for collection

### Publish Maps

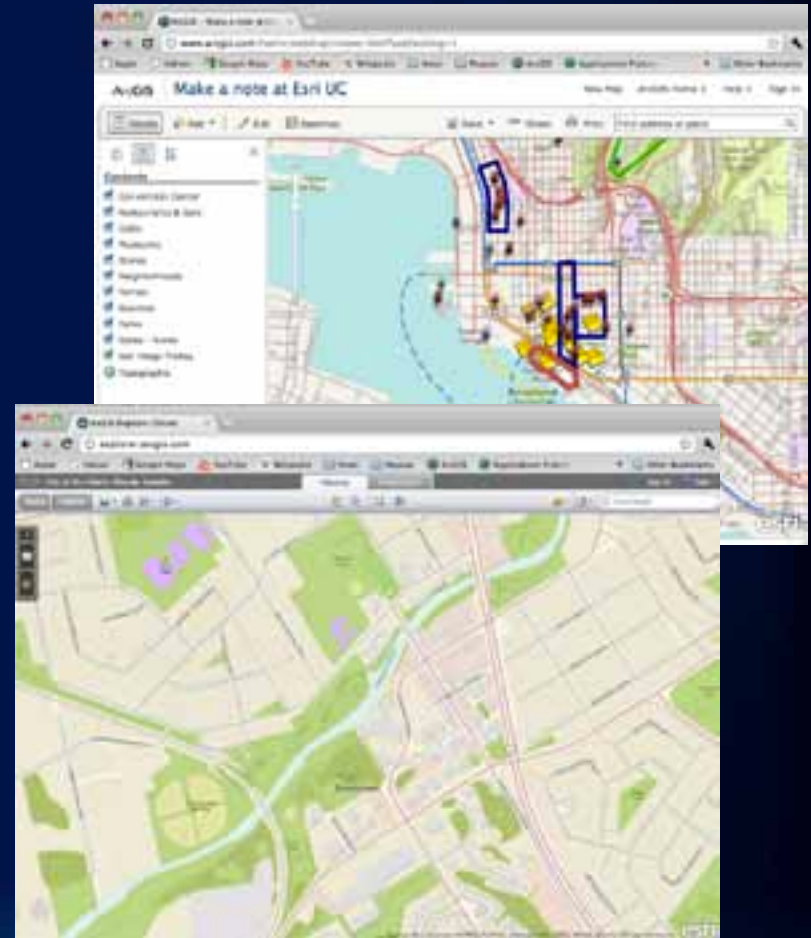
- Use ArcGIS Server to publish services
- Use Desktop Tools to create mobile caches





# Using ArcGIS Online

- **Create maps using**
  - ArcGIS.com Viewer
  - ArcGIS Explorer Online
- **Manage and share maps**
  - Using your account
  - Using groups
  - With everyone
- **Add local content**
  - Shapefiles, csv, gpx files
- **Create pre-defined queries**





# ArcGIS Application and ArcGIS System



- 1 Services are authored and published using ArcGIS (Desktop/Server)
- 2 ArcGIS Online/On Premise Server Mashup of Services into web maps
- 3 Find, Use and Share “Web Maps” using ArcGIS for iOS

# How it works DEMO



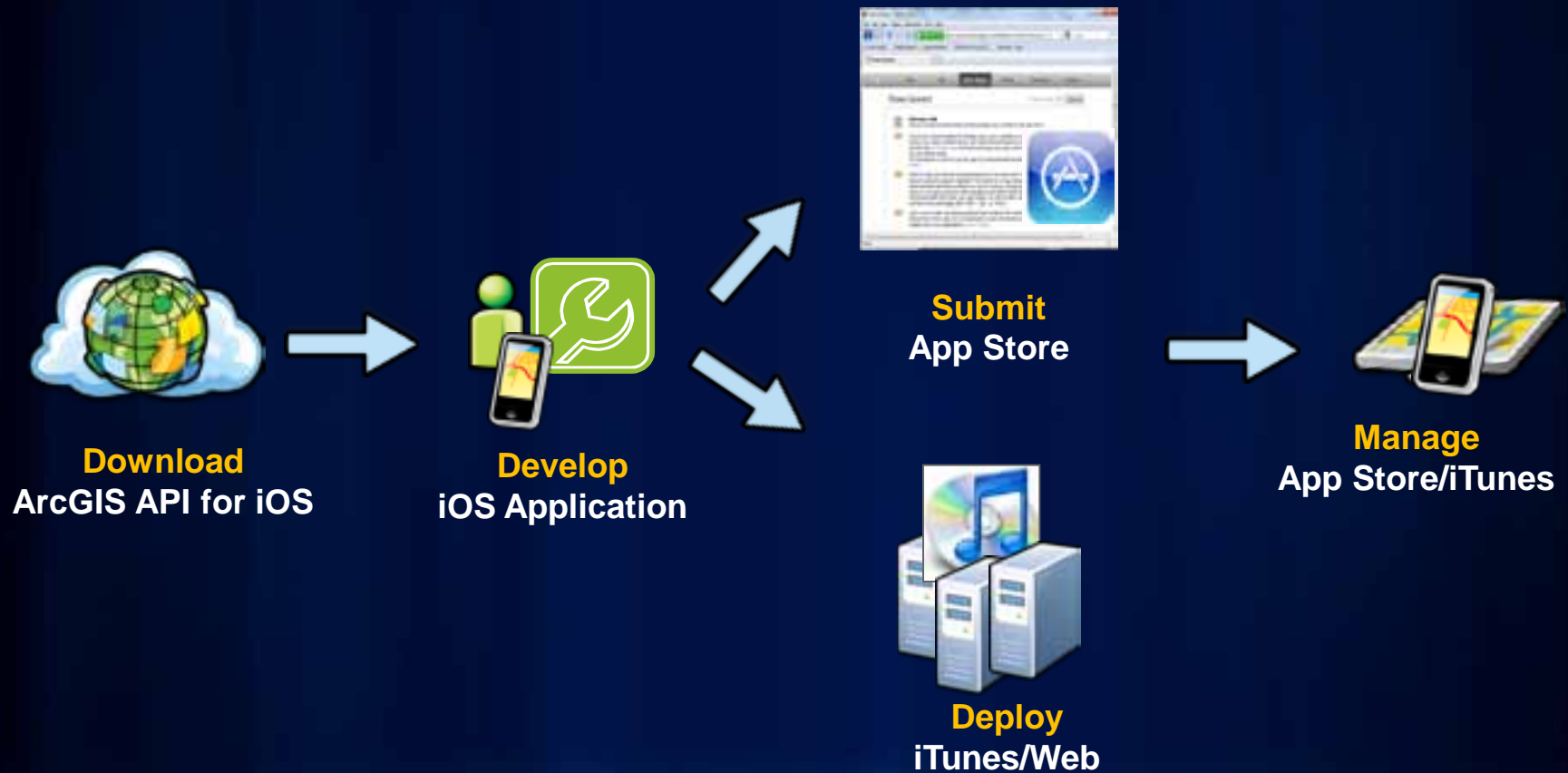
# ArcGIS API for iOS

- Native objective C API targeting iPhone developers
- Build focused mapping applications
- Embed GIS into an existing applications



*Available from ArcGIS for iOS Resource Center*

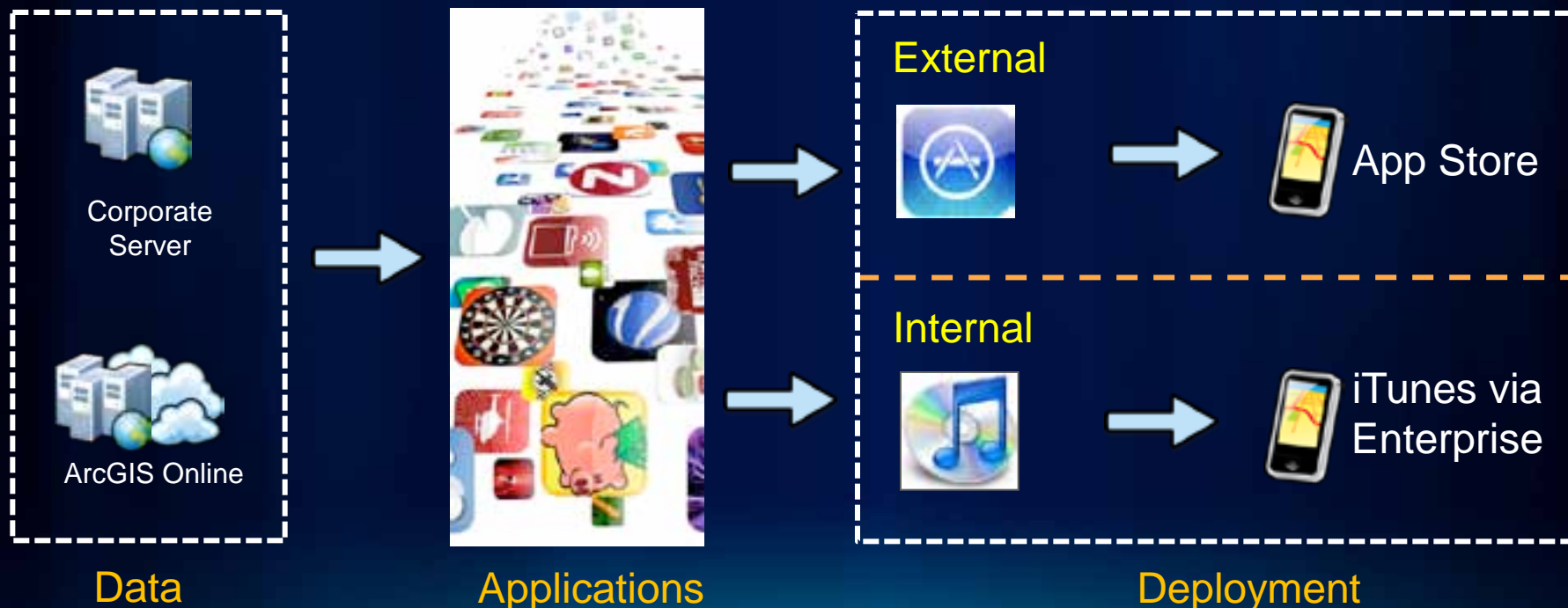
# ArcGIS API Developer Experience



*Download, Develop, Submit/Deploy, Manage*

# iOS Application Deployment

- App Store deployment or Internal Enterprise Deployment
- Application management via Apple Developer Portal or iTunes Connect



# Mobile Resource Management Solutions

- **Apple Enterprise Solutions**

- iPhone Configuration Utility
- iTunes Deployment
- Web deployment

- **3<sup>rd</sup> Party Solutions**

- SOTI MobiController (supports iOS, Android and Windows Mobile devices)
- Sybase Afaria
- Odyssey “Athena” Software



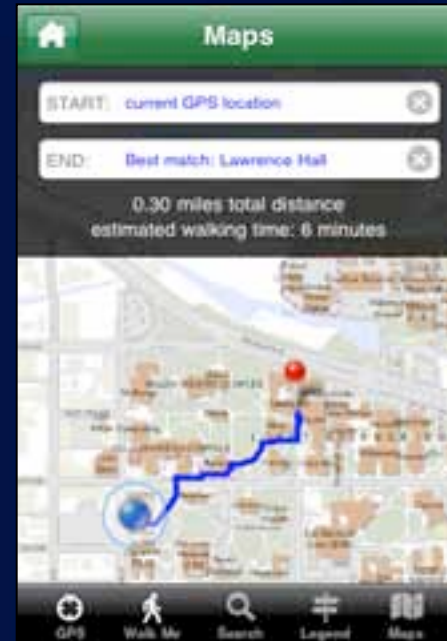
# Custom Applications in the App Store



Quake Map



Where To?



University of Oregon



City Sourced

# How are they licensed?

## ArcGIS Application

- Free and available via App Store

## Runtime SDKs

- Free for Enterprise and Store\*\* Deployments
- Attribution is Required for all Apps!
  - Esri Attribution for ArcGIS Online map layers
  - Bing Attribution for Bing map layers
  - About Box Attribution
- Cost with Esri if:
  - App generates revenue and is in a store
  - Not licensed for server (commercial)
- Cost Basis:
  - Percentage of sales, yearly subscription



# Roadmap



# ArcGIS for iOS Roadmap

## Summer Update

- Quick bug fix release, support for FindPlaces

## Fall Release

- Routing and driving directions in ArcGIS app
- GPS improvements (Tracks, GPS display, Compass Navigation)
- Open layer support (KML, WMS, WMTS)
- Offline tile cache support for API

## Winter Release

- Complete Offline support (feature caching, tile package)
- Improved Graphics display
- Messaging and GeoCollaboration

# Technical Workshops To Attend

## Tuesday July 12<sup>th</sup>

8:30am – 9:45am – ArcGIS for Windows Mobile – An Introduction (31b)

10:15am – 11:30am – Esri Mobile Solutions Overview (31b)

1:30pm – 2:45pm - ArcGIS for Windows Phone (31b)

1:30pm – 2:45pm – ArcPad – Introduction to Customizing ArcPad Solutions (30d)

3:15pm – 4:30pm – ArcPad – An Introduction (31b)

## Wednesday July 13<sup>th</sup>

8:30am – 9:45am - Choosing a Mobile Solution (6f)

8:30am – 9:45am – ArcGIS for iOS (8)

8:30am – 9:45am – Windows Phone – Developing Applications (31b)

1:30pm – 2:45pm – ArcGIS for Android (31b)

1:30pm – 2:45pm – iOS – Developing Applications (15a)

3:15pm – 4:30pm – ArcGIS for iOS (31b)

# Technical Workshops To Attend

## Thursday July 14<sup>th</sup>

8:30am – 9:45am - ArcGIS for Android (31b)

8:30am – 9:45am – Deploying Esri's Mobile Technology across... (3)

1:30pm – 2:45pm - Esri Mobile Solutions Overview (15a)

1:30pm – 2:45pm – Android – Deploying Applications (6c)

1:30pm – 2:45pm – ArcPad Advanced Customization (31b)

3:15pm – 4:30pm – ArcGIS for Windows Mobile – Developing Apps (31b)

## Friday July 15<sup>th</sup>

9:00am – 10:15am – Esri Mobile Solutions Overview (4)

9:00am – 10:15am – ArcGIS for iOS (10)

9:00am – 10:15am – ArcGIS for Android (11a)



# 20 minute Tech Workshops

## Wednesday July 13<sup>th</sup>

8:30am – 8:50am—Using GIS Technology on Smartphones (6a)

## Thursday July 14<sup>th</sup>

8:30am – 8:50am—Using GIS Technology on Smartphones (23b)

8:30am – 8:50am – Road Ahead – ArcGIS for Windows Mobile (24a)

8:55am – 9:15am – Publishing your data for Smartphones and... (23b)

9:20am – 9:40am – Authoring Web Maps for Smartphones and... (23b)

10:15am – 10:35am – Road Ahead – ArcGIS for Android (6b)

10:40am – 11:00am – Road Ahead – ArcGIS for iOS (6b)

11:05am – 11:25am – Road Ahead – ArcGIS for Windows Phone (6b)

12:00pm – 12:30pm – ArcPad – Building great Apps (30a)

3:15pm – 3:35pm – ArcPad/GeoCollector (6b)

## **Additional Activities to Consider**

### **Mobile Product Island @ Esri Showcase**

Meet the development team at the exhibit hall!

Tuesday 9am – 6pm

Wednesday 9am – 6pm

Thursday 9am – 1:30pm

### **Try ArcGIS Mobile Live!**

Tuesday/Wednesday (2:00pm – 4:00pm)

Thursday (10:00am – 12:00pm)

### **Mobile Special Interest Group Meeting**

Tuesday 12:00pm – 1:00pm 23b

The background features a dark blue gradient with a light blue grid pattern on the left side. On the right, there is a stylized green globe showing a landscape with mountains and a city.

# Thank You

<http://www.esri.com/sessionevals>