

2013 Esri International User Conference

July 8–12, 2013 | San Diego, California

***Project PROTHO – Connecting
Citizens With Science***

Mark Musselman

Prothonotary Warbler



- Breed in forested wetlands of eastern U.S.
- Winter in mangroves in Central and South America
- Nest in tree cavities
- Listed as Yellow on Audubon WatchList
- Abundant within old-growth forest at Francis Beidler Forest

Project PROTHO

Gain better understanding of
Prothonotary Warbler (PROW)
breeding biology in an old-growth
forested wetland:

- Population Density
- Nest Site Selection
- Nesting Success
- Use of Upland Buffers



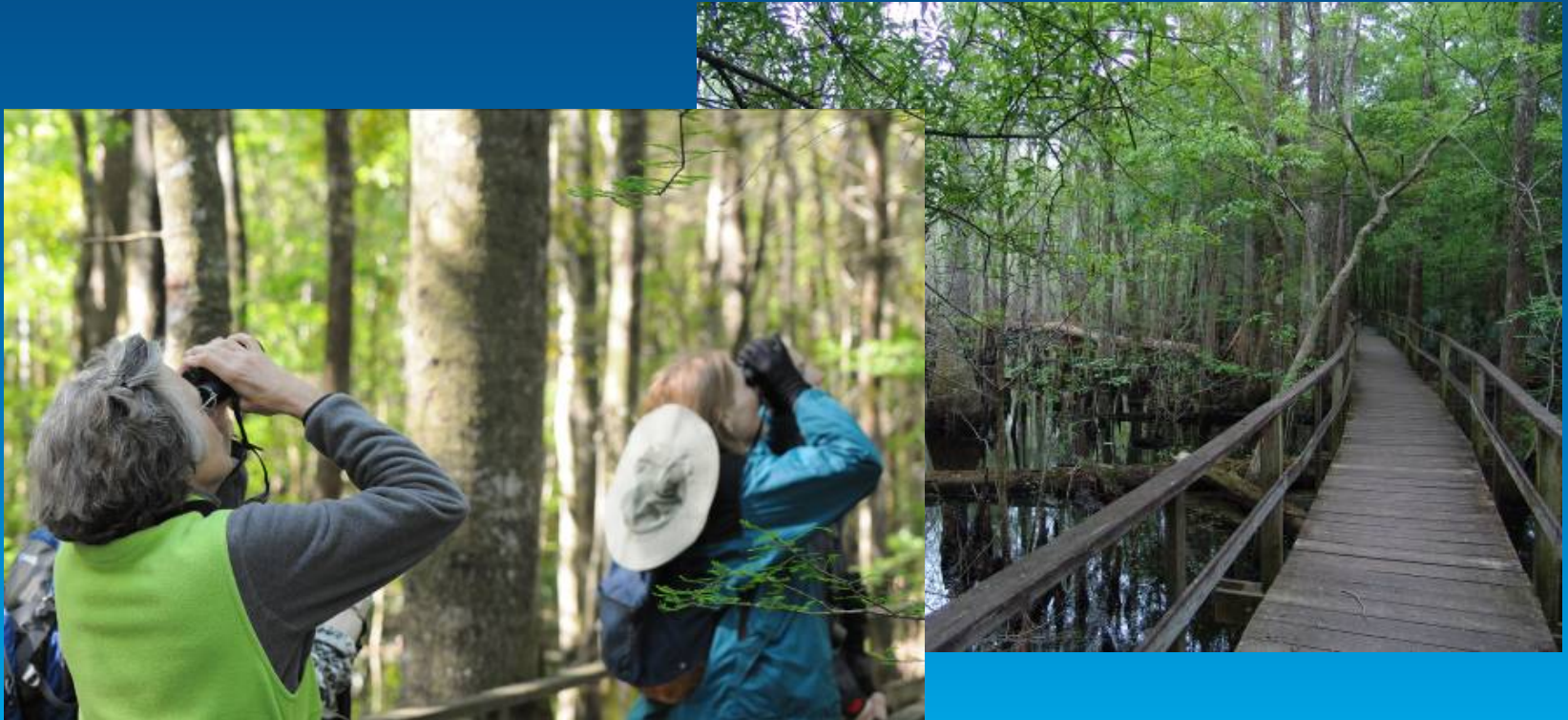
Project PROTHO

- Cavity nesting
- Fewer cavities in younger forests or in lost habitat



Project PROTHO

Boardwalk allows easy access to the habitat for banding and observation allowing more individuals to become involved.



Project PROTHO

Capture method - mist net



Project PROTHO

Each bird received a standard USGS aluminum band and number...



Project PROTHO

...plus color bands designated for Project PROTHO.



Project PROTHO

These are the nine different colors of plastic bands that we place on the warblers' legs.



Project PROTHO

P/W	0
R/W	1
Pink	2
LtGr	3
Yellow	4
Red	5
LtBlue	6
Black	7
Orange	8
DkBlue	9



Project PROTHO

Location markers on boardwalk were used to record sightings of banded birds.

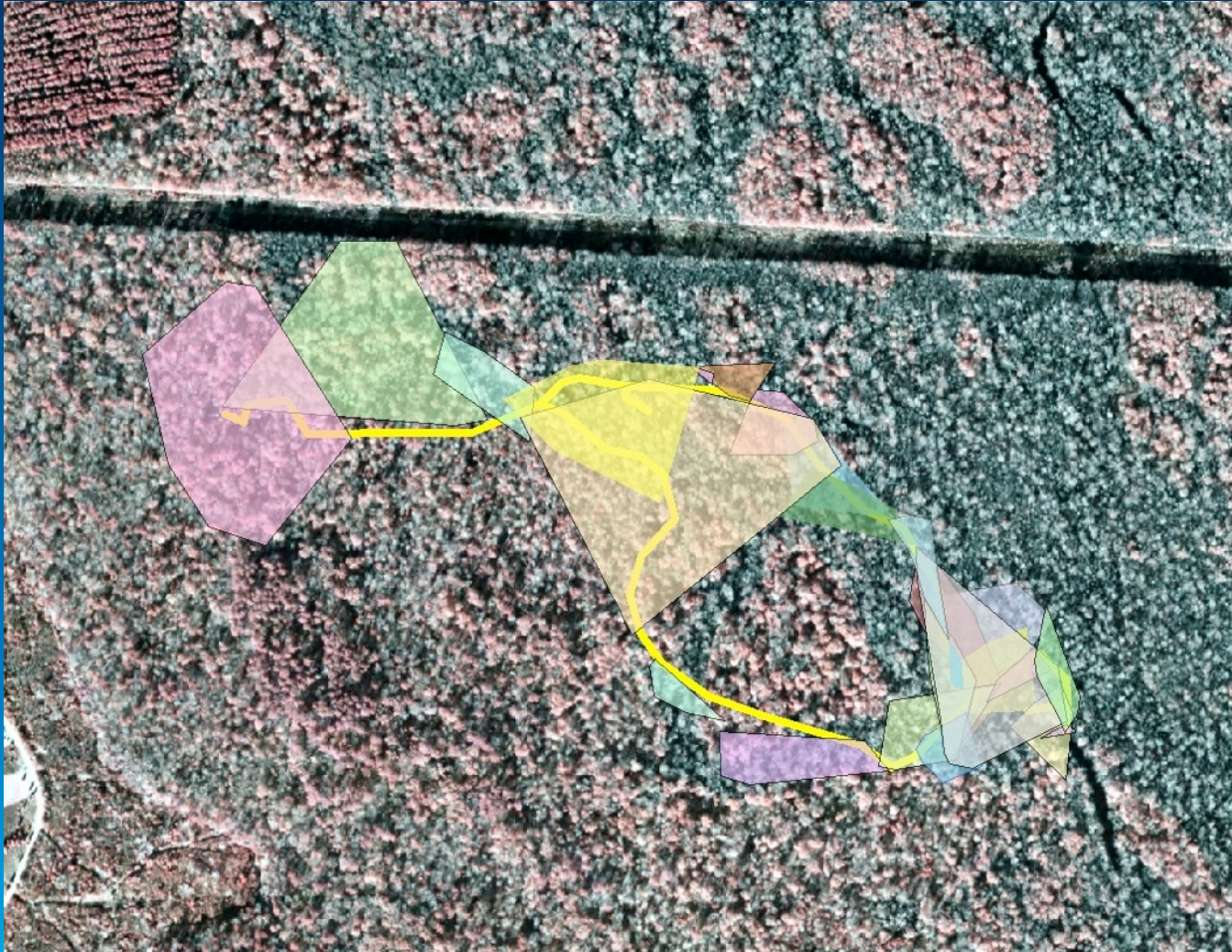


Project PROTHO

- Staff and volunteers observed birds
- Record:
 - Identification
 - Time
 - Behavior
 - Location



Project PROTHO



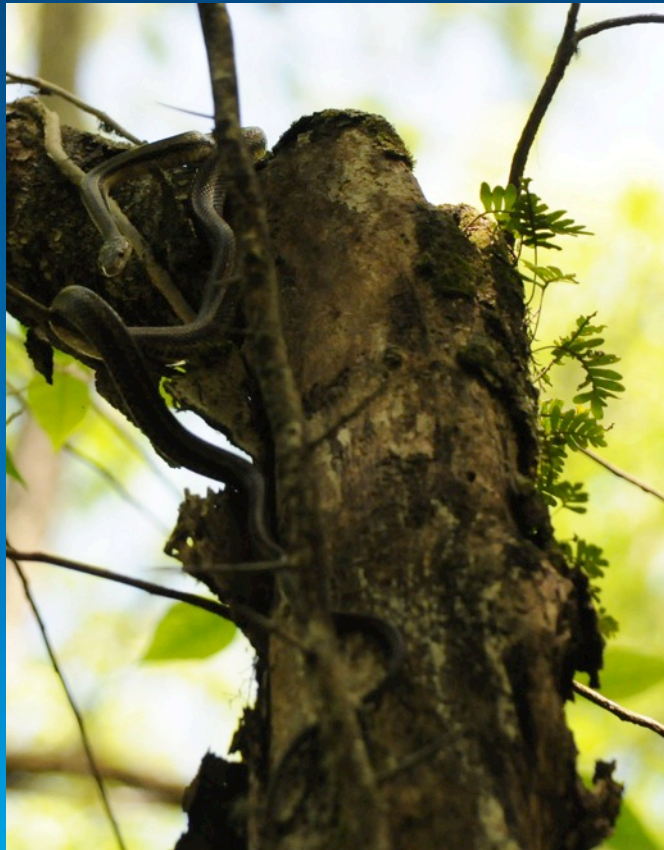
Project PROTHO

Banded birds can be linked to specific nest sites...



Project PROTHO


...and their nesting success recorded.



Project PROTHO

Education


[Contact Us](#) [Careers](#) [Member Center](#) [Audubon.org](#) [Privacy Policy](#)

 **Audubon** BEIDLER FOREST

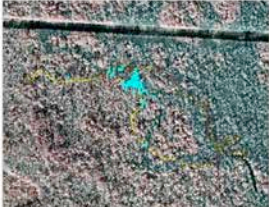
[Visit](#) | [Learn & Explore](#) | [Birds & Wildlife](#) | [Ways to Help](#) | [About](#) | [Donate](#) | [Join Us](#)

[Share](#) [Like](#) 3 [Tweet](#) 0 [Pin it](#) [Print](#)

[Home](#) >
Project PROTHO - A012
Details for Prothonotary Warbler A012.



Mark Musselman - Audubon South Carolina
A012



Mark Musselman - Audubon South Carolina
Sightings 2011-2013

Date banded: 4/19/2011

Location: #147

Sex: M

Mate:

1. 2013 - unbanded and unbanded

Nest:


1. 2013 - nest box behind #3 sign AND #18 sign

Notable sightings:


1. 5/28/2011 - singing near #118

Beidler Forest

- Visit
- Learn & Explore
- Birds & Wildlife
- Ways to Help
- About



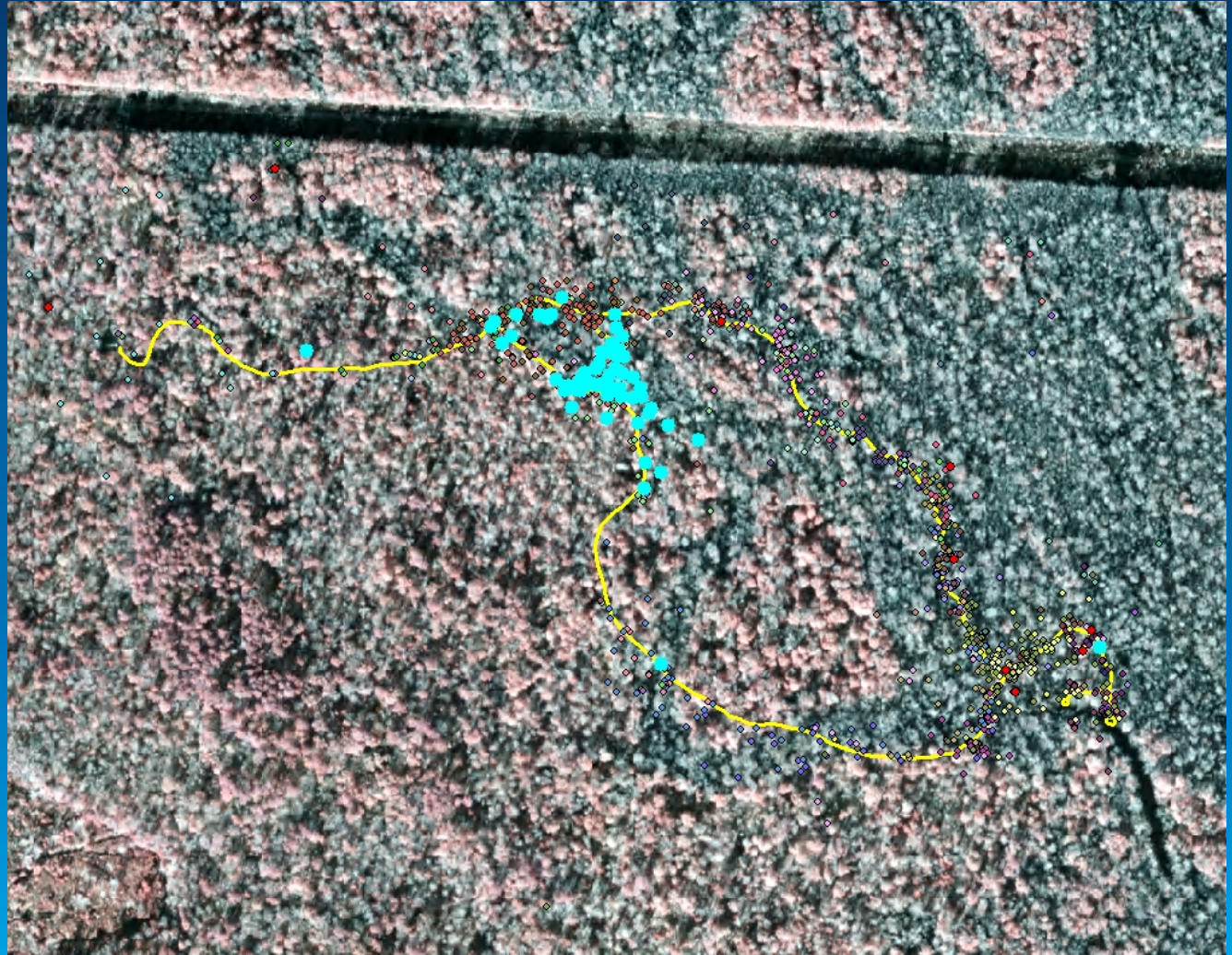
Join Us - We'll Do Great Things Together



Beidler Forest [JOIN](#)

Project PROTHO

Education



Project PROTHO

Mate fidelity can be observed.

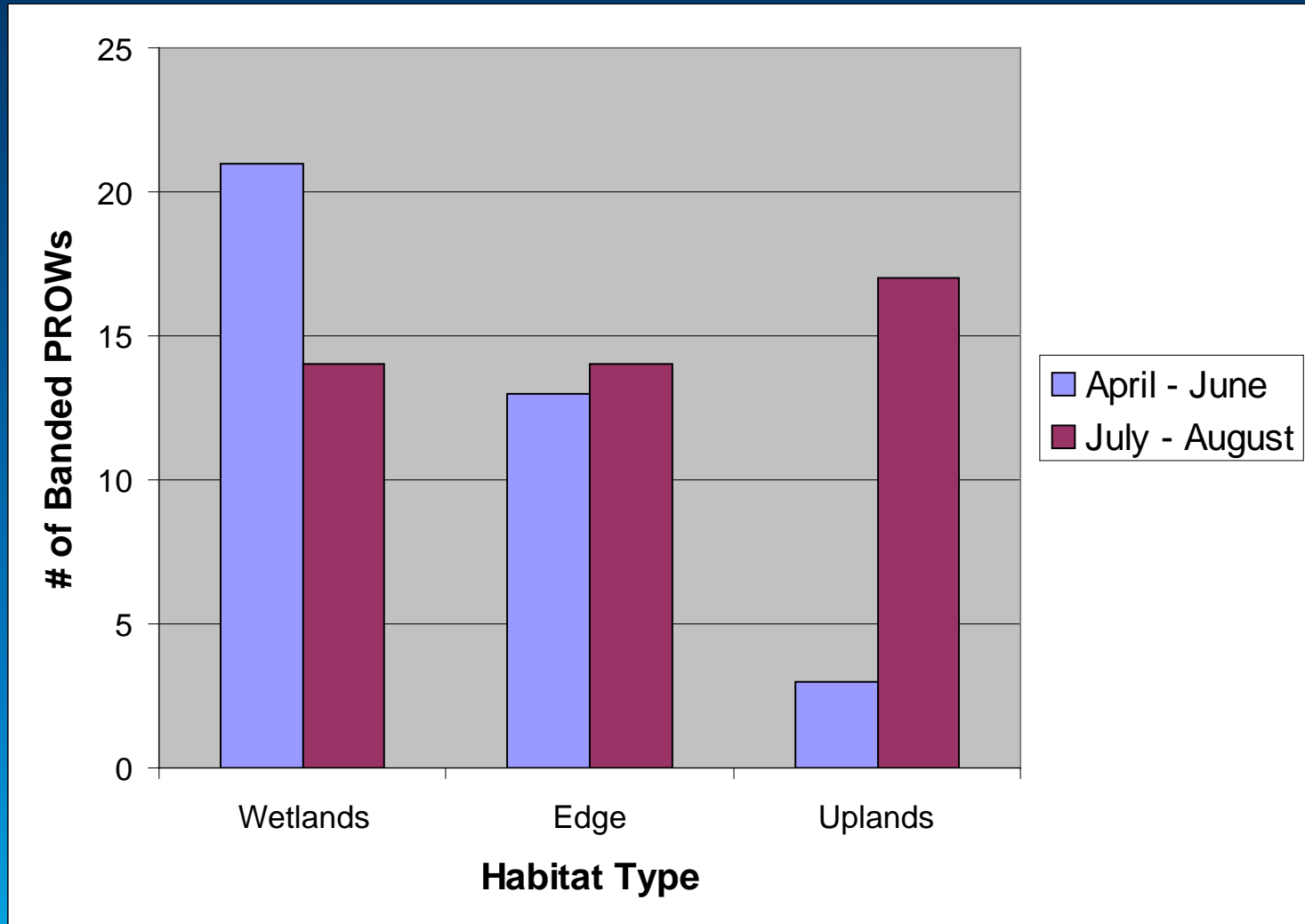


Project PROTHO

Are there specific lands we should target for acquisition or management?



Project PROTHO



Project PROTHO

Questions?

