



Collector for ArcGIS: Tips and Tricks

Morgan Zhang

Li Lin

Collector for ArcGIS

- Maps in the hands of your field workforce
- Requirement
 - ArcGIS Online organization account
 - Portal for ArcGIS



Webmap Authoring




- Host feature layer from template
- Enable attachment on layer
- Naming basemap
- Create bookmark
- Configure app settings (query layer)

New Hosted Feature Layer

[From Template](#) [From Existing Layer](#) [From URL](#)

Select a template

AEDs Boom Placement Bridge Inventory



Export to Feature Collection
Service URL
Disable Attachments

Application Settings

Select the tools and capabilities to enable in applications that access this web map

- Routing
- Measure Tool
- Basemap Selector
- Find Locations [-]

Hint text

- By Layer

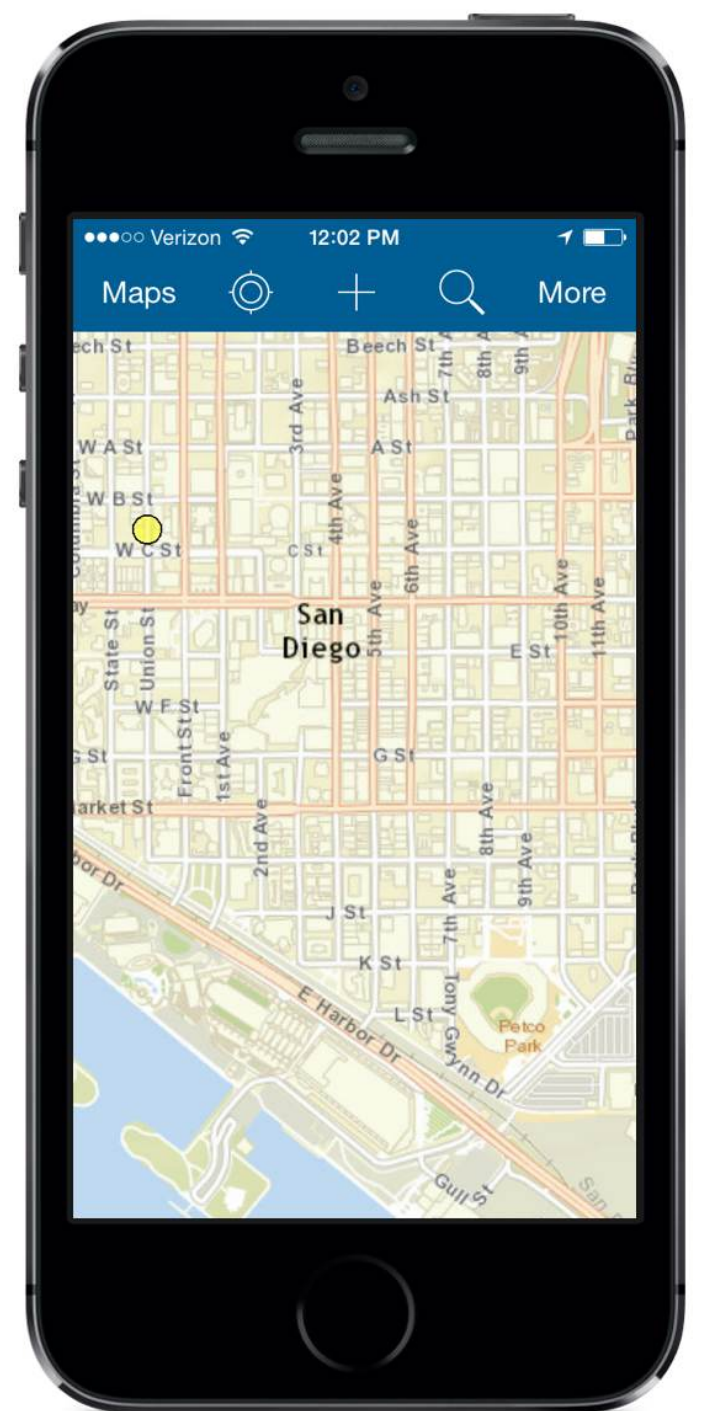
Layer	Field	Condition
<input type="text" value="Road Block"/>	<input type="text" value="Road Block Name"/>	<input type="text" value="Contains"/>

[ADD LAYER](#)

- By Address

Demo

Li Lin



What are tips and tricks?

1. **Efficient Data Collection methods**
 - Collector here
 - Continuous Collect
 - GPS streaming for line/polygon features
2. **Feature search**
3. **Bookmarks and my places**
4. **Download/Manage offline basemaps**
5. **.etc**

More tips and tricks to know

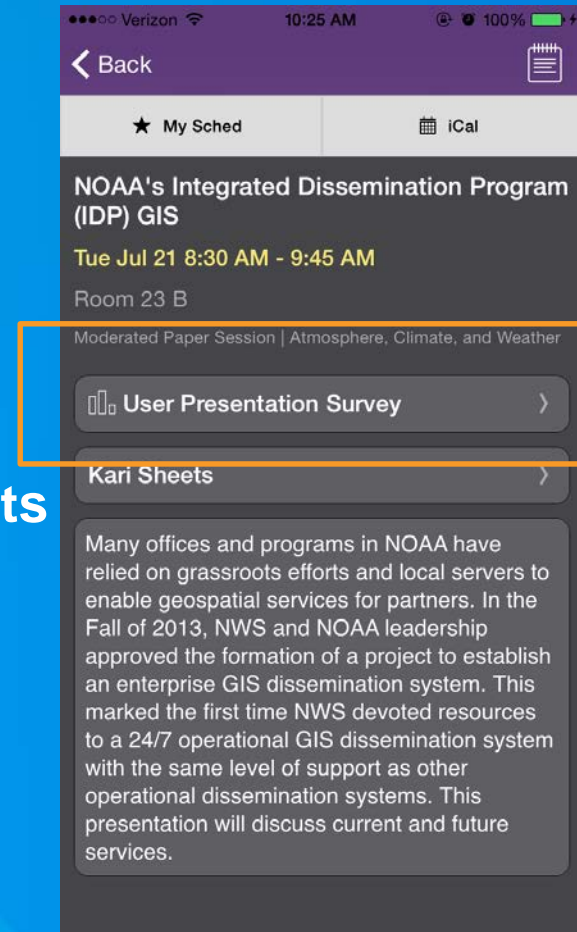
- **Collector webmap requires layers from 1+ feature services (editable)**
- **Offline webmap requires all the layers offline capable**
 - All feature layers are sync-enabled (ArcGIS Online hosted or on-premise Server)
 - Server Tiled Map Services with export tiles enabled
 - Esri default Basemap
 - ArcGIS Online hosted tile layer
- **Editor tracking**
- **Location tracking**
- **External GPS**
- **External barcode scanner**

Collector Demo Theater Sessions

- Tuesday, July 21
- 12:30 pm–1:15 pm Collector for ArcGIS: Tips and Tricks
- 04:00 pm- 04:30 pm Authoring Effective Maps for Collector (30min workshop)
- 4:30 pm–5:15 PM Best Practices: Authoring Maps for use in the Field
- Wednesday, July 22
- 3:30 pm–4:15 PM Using Relationships with your Inspection Workflows
- Thursday, July 22
- 9:30 am–10:15 AM Collector for ArcGIS: Tips and Tricks
- 11:30 am–12:15 pm Using Relationships with your Inspection Workflows
- 12:30 pm–1:15 PM Best Practices: Authoring Maps for use in the Field

Thank you...

- Please fill out the session survey in your mobile app
- Select in the Mobile App
 - Use the Search Feature to quickly find this title Collector for ArcGIS: Tips and Tricks
- Click “Demo Theater Survey”
- Answer a few short questions and enter any comments





Understanding our world.