

Tailored Geo-services in support of European Missions and Operations

UC

Bogdan Palade

Pablo Vega

Index

The EU
SatCen

Our Users

GeoPortal

GeohuB

Conclusions



Index

The EU
SatCen

Our Users

GeoPortal

GeohuB

Conclusions



European Union Satellite Centre (SatCen)

Support to Common Security and Defence Policy of EU

Agency of the EU Council



Intelligence for our users

“The only Operational Entity in Space and Security in support of the decision-making of the European Union”

(C. Ashton – 14 September 2012)

Index

The EU
SatCen

Our Users

GeoPortal

GeohuB

Conclusions



SatCen Users



- EU Member states
- EEAS (European External Action Service)
- The EU Commission
- Other EU Agencies
- Third states
- International Organizations

Users: Limited GIS experience

- Offline support
- Mobile support
- Lightweight

Users: Fair GIS support

- Comprehensive products
- Continuous support

Users: variable GIS knowledge

- Synthetic products
- More complex products

Field Support - Field Office
Field Patrols



OHQ's - HQs



Decision Makers - EEAS
Member States



Recent SatCen Support to Missions and Operations

EUMM GEORGIA

Border monitoring, assessment of military facilities and analysis of military activity

OSCE

Support to SMM Ukraine in the verification of the Minsk Agreement. Analysis of military activity and equipment

EU NAVFOR MED-SOPHIA

Surveillance and assessment of human smuggling and trafficking networks

FRONTEX

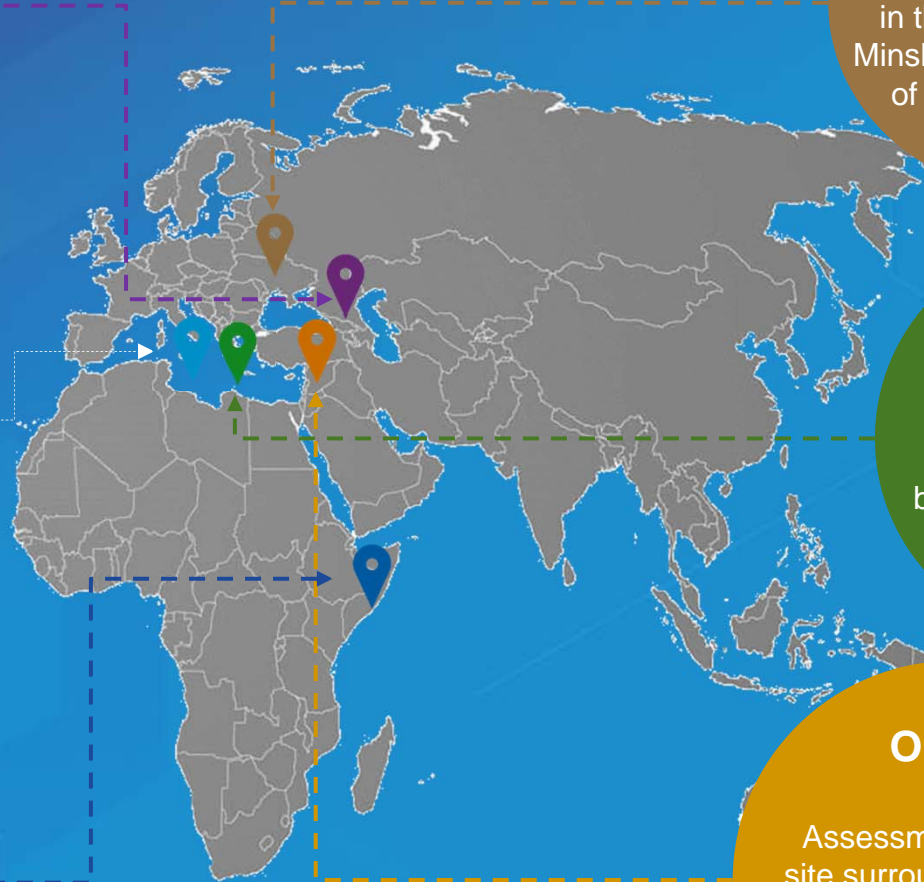
Monitoring of coast activity and external borders activity related to migration crisis

EU NAVFOR SOMALIA

Monitoring known Pirate Operating locations, maritime facilities and shoreline activity

OPCW

Assessment of facilities, site surroundings and road network. Support to Fact Finding Teams and verification of Syrian Reports



Main Analysis Domains



Security Surveillance

- *Treaty verification*
- *Border control*
- *Global terrorism*
- *Piracy and coastal analysis*



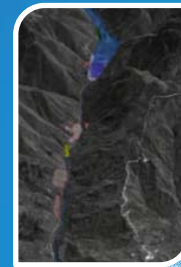
Contingency Planning

- *Support to evacuation operations*
- *Rapid mapping*



Humanitarian Aid

- *Refugee camps / IDPs*
- *State failure and insurgency*
- *Man-made and natural disasters*



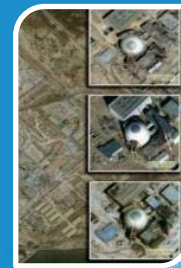
Critical Infrastructure

- *Elements-at-risk mapping*
- *Threat analysis and Vulnerability Assessment*



Military Capabilities

- *Analysis of military activity / deployed forces*
- *Battle Damage Assessment*



Weapons of Mass Destruction

- *Arms control and non-proliferation*
- *Chemical weapons*



SatCen Products and Services

First Impression Reports



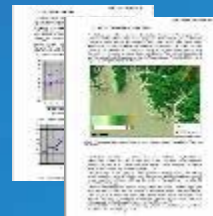
Briefing Notes



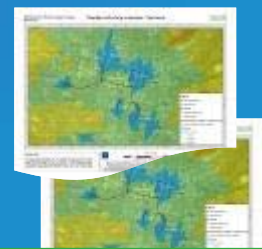
Reports



Studies



GIS



Web Map Services



Optical imagery



SAR complex analysis



DEM



Thermal data



Full Motion Video



Maps/Vectors



3D modeling



Volume extraction



Collateral Data Analysis



OSINF integration

Index

The EU
SatCen

Our Users

GeoPortal

GeohuB

Conclusions

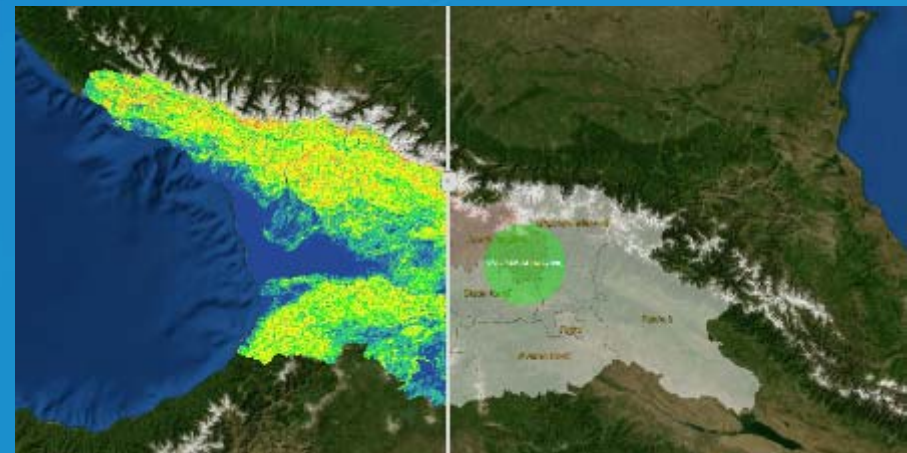
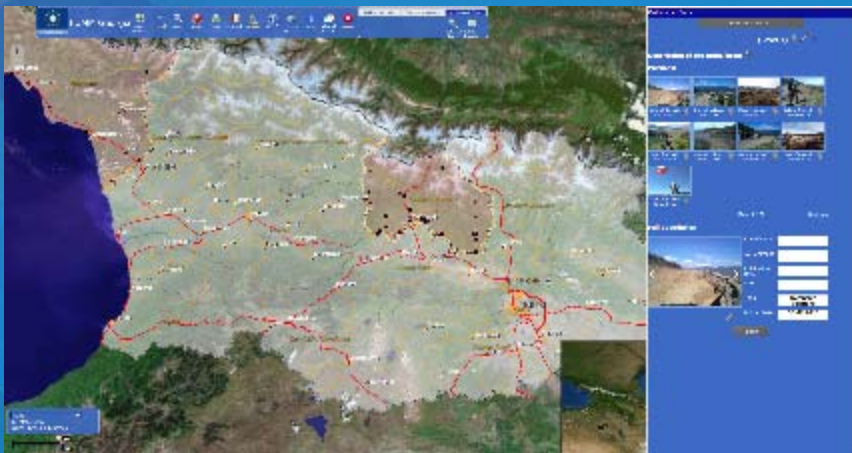
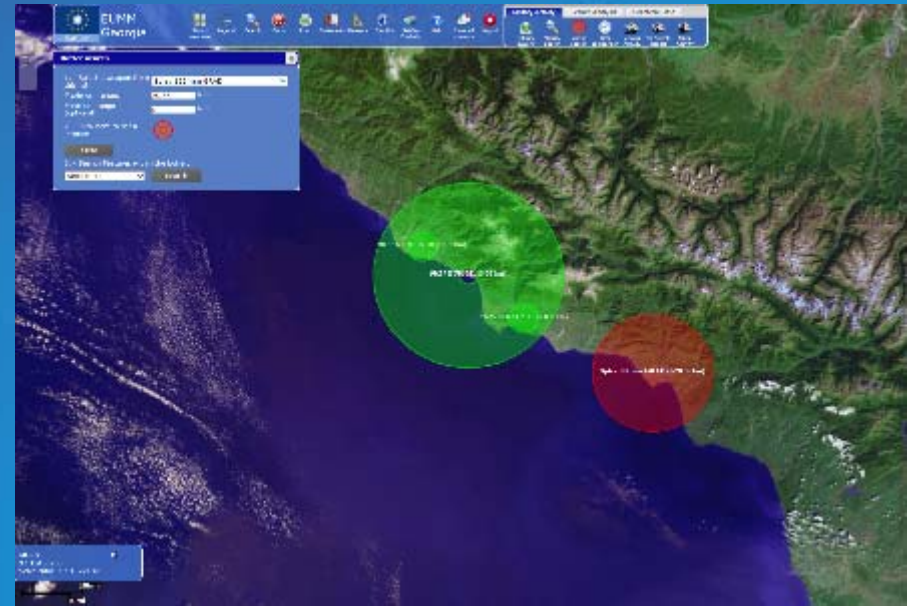
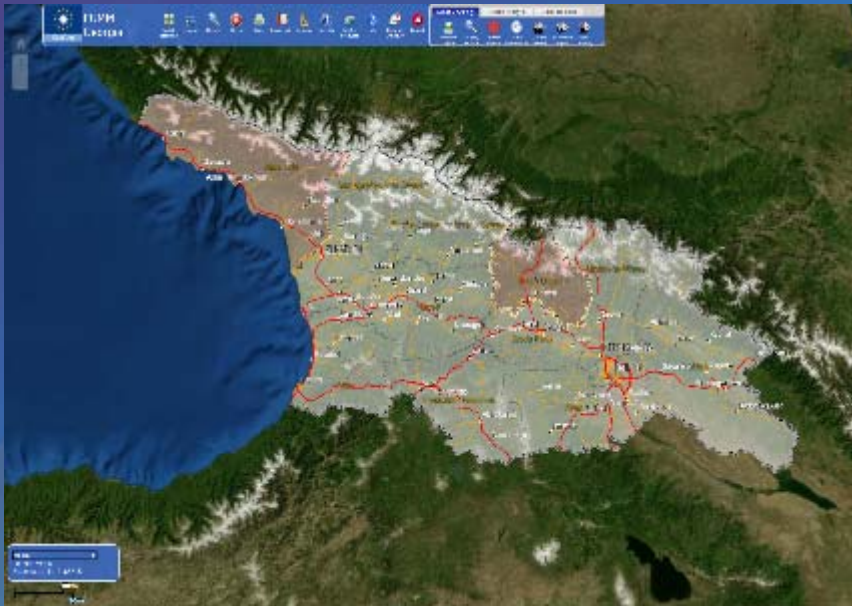


Geo-Intelligence Portal for EU Missions and Operations

- deployable, self-contained tool, built with the primary objective to serve EU Missions and Operations
- improves the communication, coordination and data flow between the SatCen and supported missions/operations
- online platform (closed loop at Restricted level) where the majority of the data produced by the SatCen for the respective Mission/Operation can be consulted in a geo-spatial environment (pdf reports, satellite imagery, maps)
- set of tools that representatives of the Mission/Operation can use in order to generate geo-spatial intelligence by themselves, interacting with the data provided by the SatCen.

SatCen GeoInt Portal

VIDEO TO BE INSERTED HERE



Index

The EU
SatCen

Our Users

GeoPortal

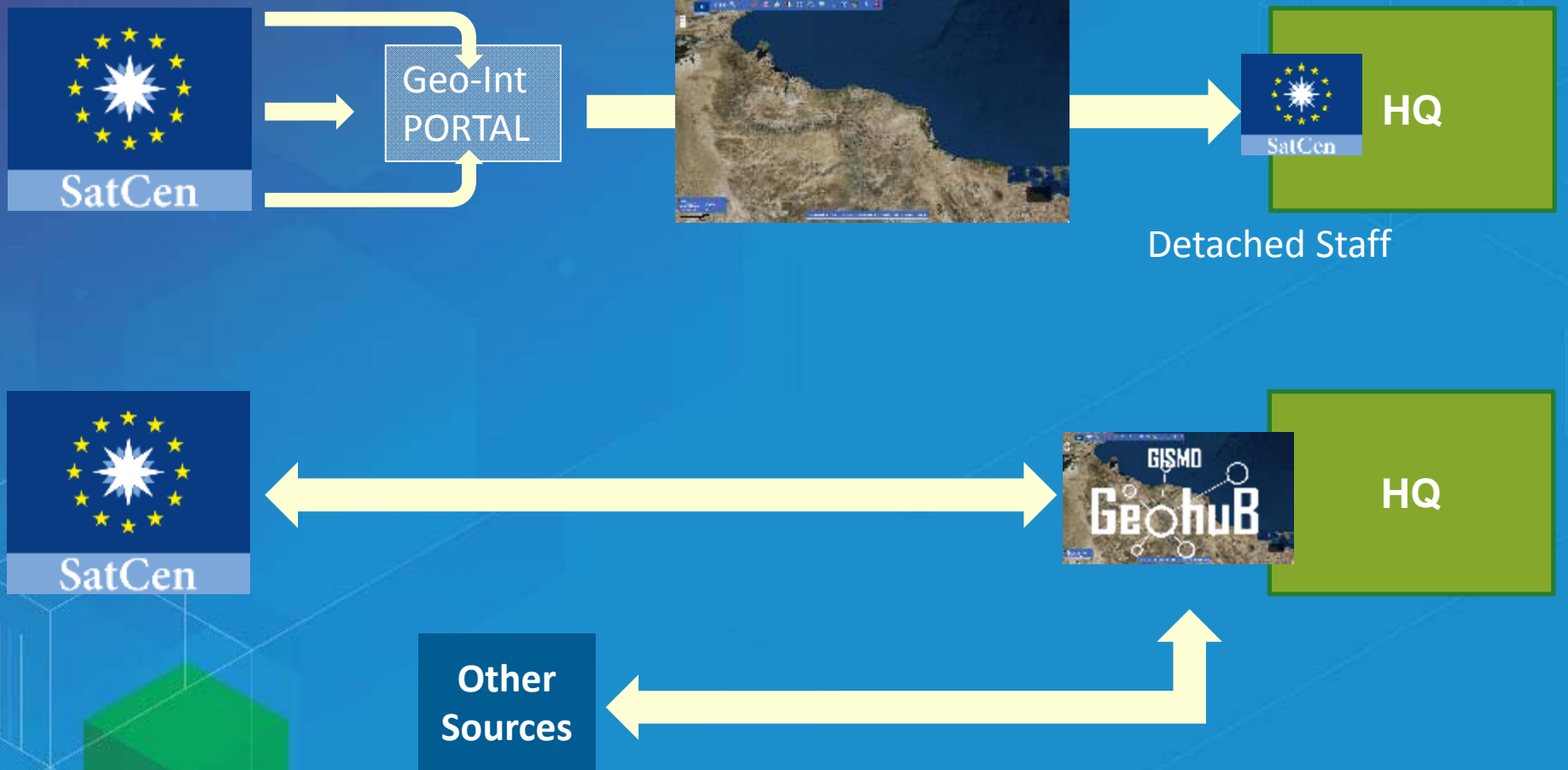
GeohuB

Conclusions



GISMO GeohuB

Enhancing User Capacity





Enhancing User Capacity

Objectives

Support sharing of geospatial
information at OHQ

Facilitate the turn-over of staff
at OHQ



Enhancing User Capacity

**Centralized
Data Serving**

**Custom Web-
based Viewer**

**Custom Web-
based Editor**

**Request
Managing**

**Bulk Data
Insertion**



Enhancing User Capacity



**Centralized
Data Serving**

**Custom Web-
based Viewer**

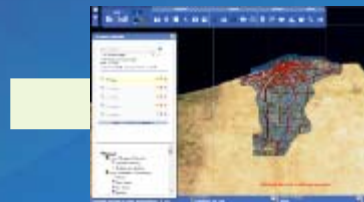
**Custom Web-
based Editor**

**Request
Managing**

**Bulk Data
Insertion**

GISMO GeohuB

Enhancing User Capacity



Common Operational
Picture

J1 

J2 

Jn 

Daily Report
IMINT Reports
Routes
Etc..

Centralized
Data Serving

Custom Web-
based Viewer

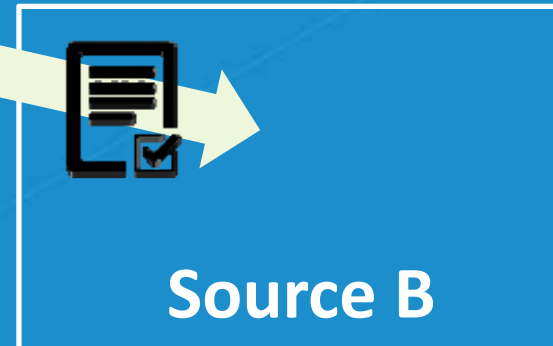
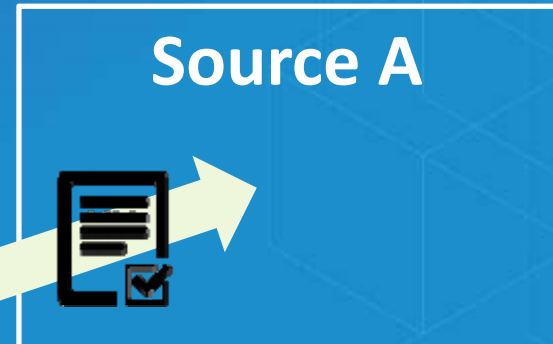
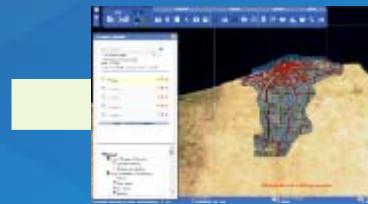
Custom Web-
based Editor

Request
Managing

Bulk Data
Insertion

GISMO GeohuB

Enhancing User Capacity



**Centralized
Data Serving**

**Custom Web-
based Viewer**

**Custom Web-
based Editor**

**Request
Managing**

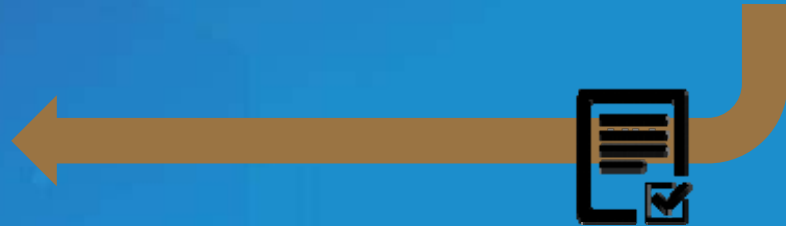
**Bulk Data
Insertion**

GISMO GeohuB

Enhancing User Capacity



Poweruser



**Centralized
Data Serving**

**Custom Web-
based Viewer**

**Custom Web-
based Editor**

**Request
Managing**

**Bulk Data
Insertion**



Enhancing User Capacity

VIDEO TO BE INSERTED HERE

**Centralized
Data Serving**

**Custom Web-
based Viewer**

**Custom Web-
based Editor**

**Request
Managing**

**Bulk Data
Insertion**



Enhancing User Capacity

VIDEO TO BE INSERTED HERE

**Centralized
Data Serving**

**Custom Web-
based Viewer**

**Custom Web-
based Editor**

**Request
Managing**

**Bulk Data
Insertion**

Index

The EU
SatCen

Our Users

GeoPortal

GeohuB

Conclusions





Enhancing User Capacity

Technology

- COTS software allows to focus on what matters
- Exploitation of existing technologies

Impact

- Expand use of GIS beyond experts
- Empower the user to create geo-data
- Products are alive

Future

- Modular development
- From layer to suite