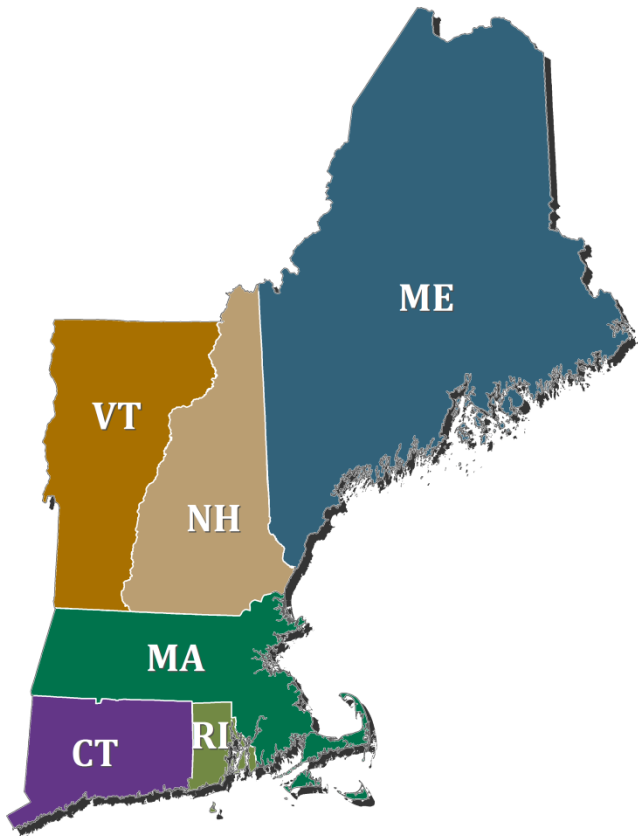


Cross-Agency Sharing of Government Data Using AGOL Groups

June 30, 2016



FEMA

Chad Council

Regional Geospatial Coordinator

Response Division, FEMA Region I

chad.council@fema.dhs.gov



Desiree L. Kocis, GISP

GIS Coordinator

Massachusetts Emergency Management Agency

desiree.kocis@state.ma.us



Michael A. Domingue, LtCol

JFHQ-NH J5/Geospatial Manager

Prior to ArcGIS Online

INTERAGENCY COLLABORATION:

- Calling, emailing and physically transporting data to each other
- Difficulty assessing who had what data, or who had produced what maps – led to overlap and duplication of efforts
- Inability to share live, dynamic mapping resources during active disasters or events

Needed a better way!



Since ArcGIS Online

INTERAGENCY COLLABORATION:

- Ability to rapidly share information during events
- Clear visibility on existing data and map products
- Reduced duplication of efforts

AGOL GROUPS:

- Best way to organize maps and data based on event
- Easy to control who has access, keeping sensitive information secure
Ex: Boston Marathon AGOL Group: 200+ members from ~50 agencies (*from local towns to the Secret Service!*)
- Can be created just for the purpose of pushing information back and forth (instead of a file sharing service)



Common Operating Data

- AGOL Groups: Structure for establishing Common Operating Data
- By design the requirements for a “Common Operating Picture” are not always consistent across agencies and different tiers of government
 - Level of detail required differs with tiers of government
 - Types of information required differs across agencies based on operational requirements
- Each agency or tier of government can achieve their COP by consuming and analyzing the relevant data to visualize as appropriate for their mission
 - Not a copy, update, or snapshot; Agencies using the **same** data



Creating Groups for Events and Sharing

1. Create Group for specific events or for cross-agency data sharing purpose. Ex:
 - National Guard/MEMA Data Share (for cross-agency)
 - Boston Marathon Event (event-specific)
2. Set up protection level of group
 - Who can be added and who can add items
3. Add appropriate members to that group
 - Diligence in removing old information
4. Clear communication about resources and how they were created/obtained/can be supplied through
5. Can make data secure – only visible to approved members.

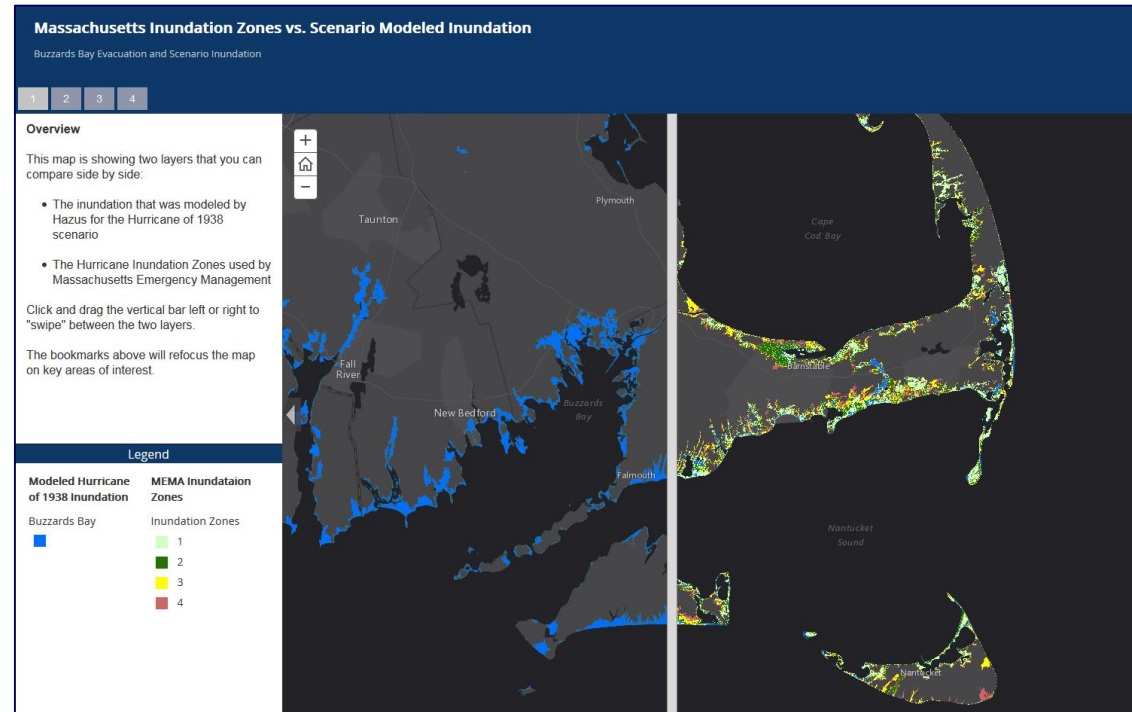


FEMA



Hurricane Planning

- Interagency collaboration
- Federal planning data
- State planning data
- Response products

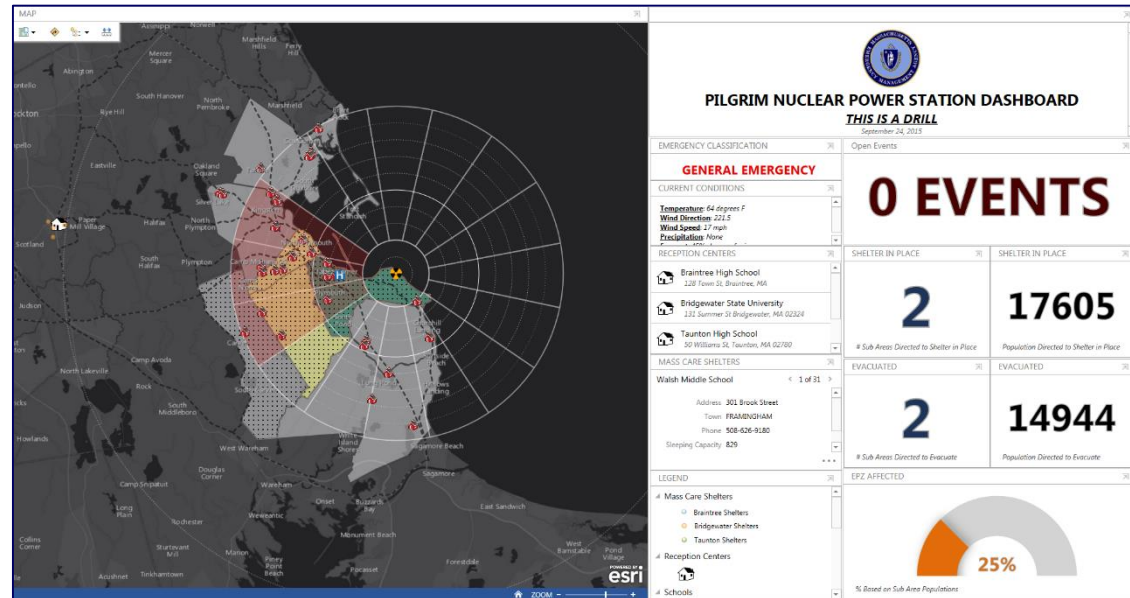


FEMA scenario data vs. MA planning data



Nuclear Power Plants

- Multiple states involved
- Used for exercises
- Ready for event

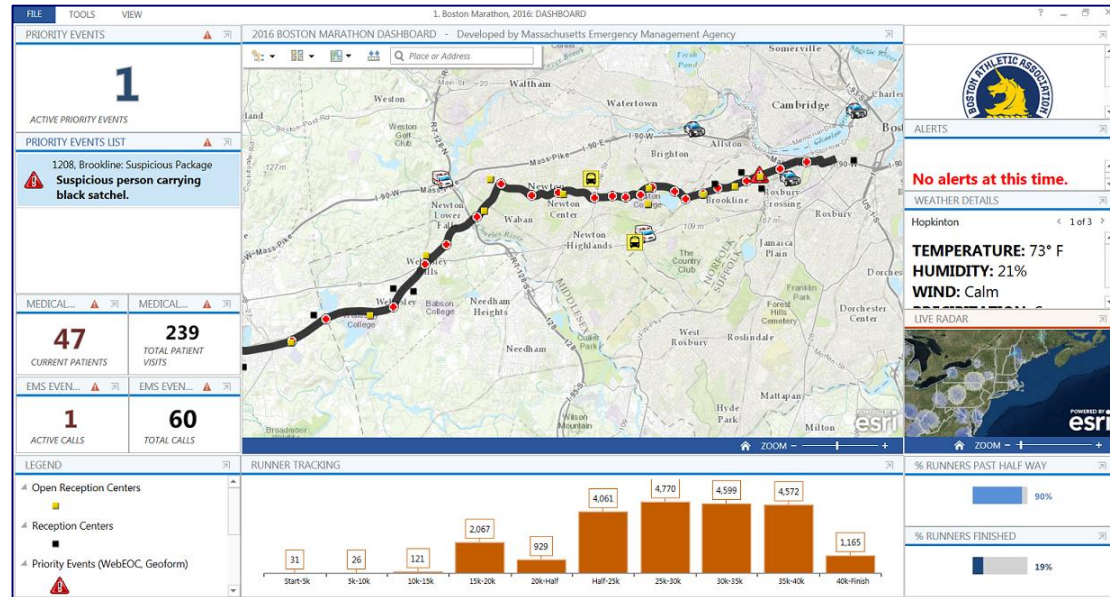


Common access for cross border response



Boston Marathon

- Many facets of government
- Common Operating Data
- Access controlled by AHJ



Ops Dashboard: Common Operating Picture



Regional Data Sharing

- Topic specific
- Members contribute
- Contents public
- Searchable via Open Data
 - Use or replicate common tags
- Isolate development maps
 - Publish consumer sharing specific maps

FEMA Region 1: Hurricane Information

EDIT INVITE USERS MEMBERSHIP REQUESTS CHANGE OWNER DELETE GROUP SHARE

Maps, data, and links related to hurricanes for Region 1.

Group Content

All Results

Maps Layers Scenes Apps Tools Files

Show ArcGIS Desktop Content

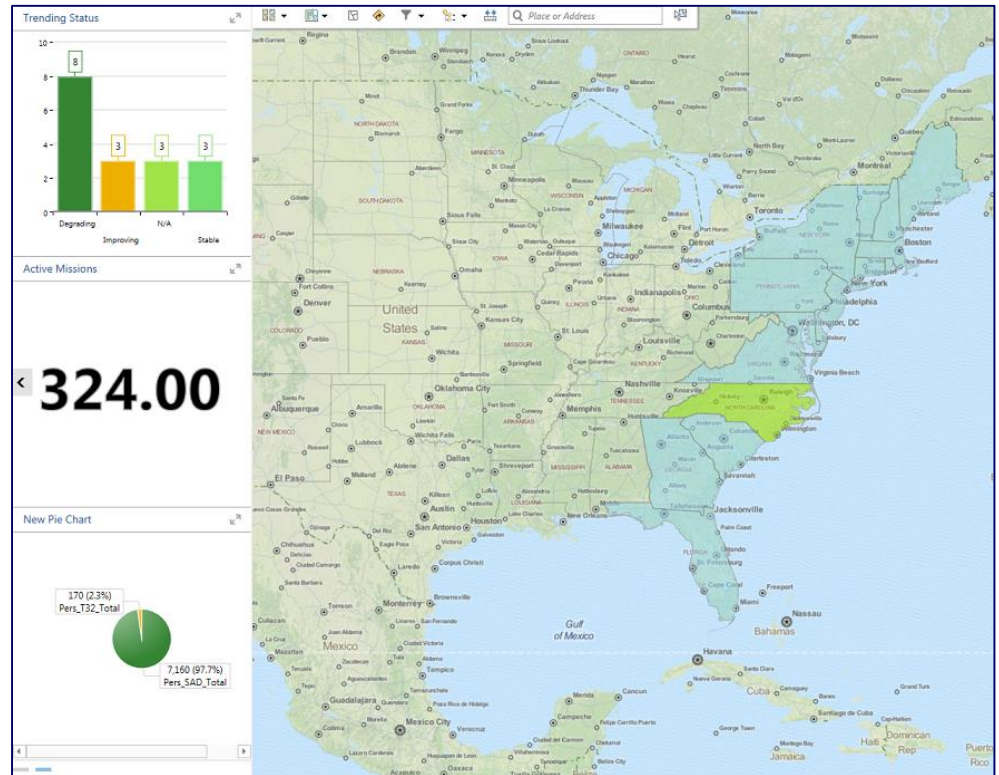
Title	Owner	Rating	Views	Date
Connecticut Hurricane Evacuation Zones 2014	ccouncil_FEMA	0 ratings, 0 comments	211 views	January 29, 2016
Connecticut Hurricane Inundation 2012	ccouncil_FEMA	0 ratings, 0 comments	156 views	January 29, 2016
FEMA Coastal Flood Loss Atlas (CFLA Version 3.01)	glongenecker	1 rating, 0 comments	12,805 views	March 4, 2015
FEMA Declarations By County	ccouncil_FEMA	0 ratings, 0 comments	70 views	June 18, 2015
FEMA Region 1 Hurricane Situational Awareness Resources	ccouncil_FEMA	0 ratings, 0 comments	0 views	April 12, 2016

State and federal data contributors



Cause III Experiment

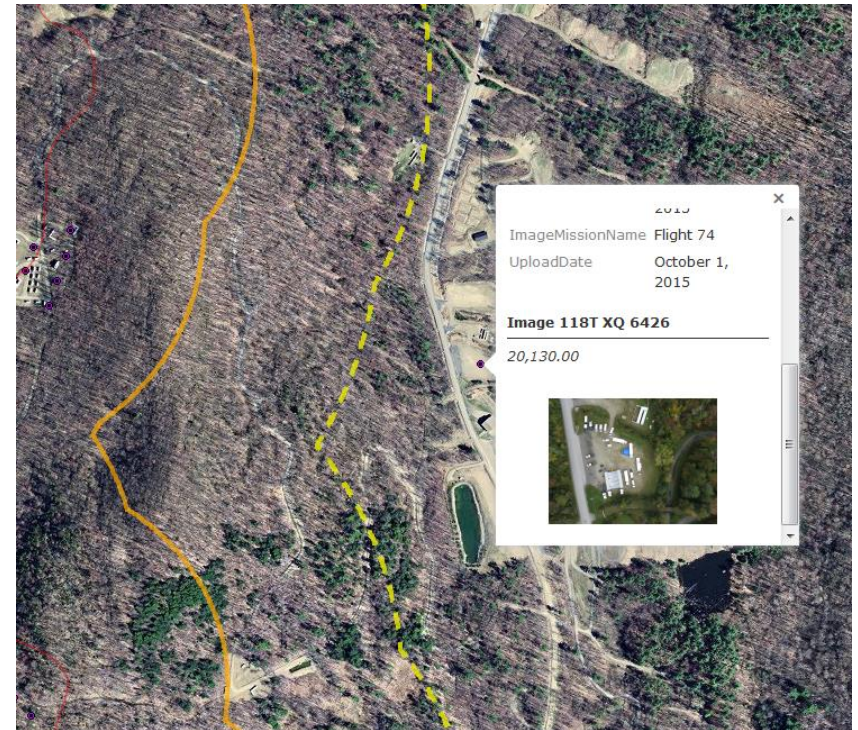
- International experiment
- Canada & USA
- US Federal Agencies
- US States
- US Cities



Browser based dashboard for cross border event

US&R / UAS Exercise

- Ten elements within four agencies
- Reference Data
- Scenario Data
- ESRI Collector service endpoint
- PDF Search Grid Atlas
- Story Map
- Image services



Story map with scenario and exercise data

Best Practices

1. Define tiers of sharing
 - Internal to the organization
 - Trusted partners
 - Public
2. Establish relationships and build groups **now**
3. Promote the Groups internally as well as externally
4. Keep momentum from “Proof of Concept” to Standard Procedure
5. **For groups with sensitive information:** Keep detailed log of each member, their agency and their contact information. Verify user identity and role.



FEMA



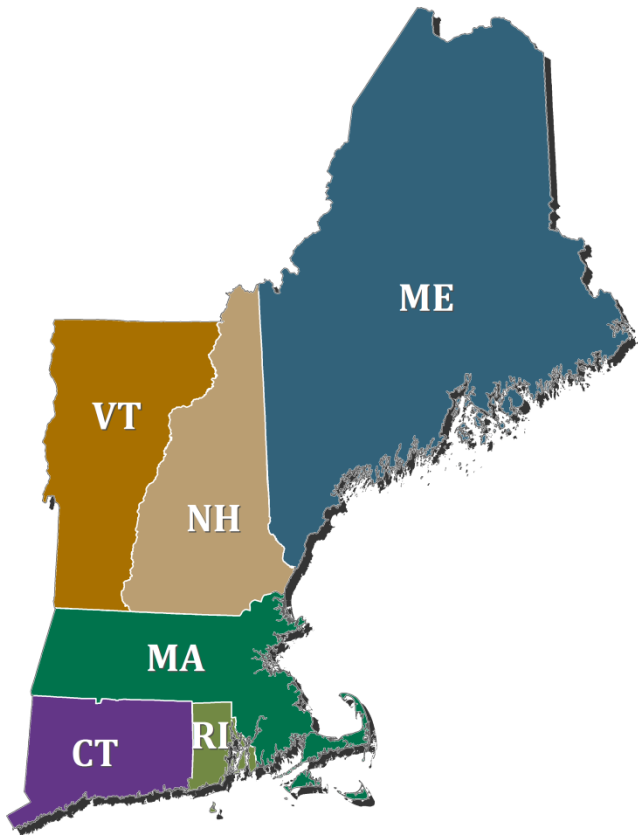
Problems to Solve

Barriers	Desired Solutions
Organization	<ul style="list-style-type: none">• Organize individual groups by types of data/maps or events• Allow folder structure to be more than one level deep• Create a pick list feature for adding tags to items to avoid misspellings or duplicate meanings
Member management	<ul style="list-style-type: none">• Create a new group with an existing group's membership list• Add a concept of "User Contact Lists" which can be used to manage group membership.



Cross-Agency Sharing of Government Data Using AGOL Groups

June 30, 2016



FEMA

Chad Council

Regional Geospatial Coordinator
Response Division, FEMA Region I
chad.council@fema.dhs.gov



Desiree L. Kocis, GISP

GIS Coordinator
Massachusetts Emergency Management Agency
desiree.kocis@state.ma.us



Michael A. Domingue, LtCol

JFHQ-NH J5/Geospatial Manager