

Creating Custom Navigation Maps

Mark Bockenhauer

Scott Sandusky

Agenda

- What is a Navigator Map?
- How to **customize the Esri Navigator map.**
- How to customize the Esri Navigator map **with Custom Roads.**
- How to create a Navigator map with **All Your Own Data.**

Demo

Navigator with Custom Data

What is a Navigator Map?

- **Create in ArcGIS Pro**
 - Search (geocoding locator)
 - Route (network dataset)
 - Display (basemap and operational layers)
- **Mobile map package (.mmpk)**

Data Options

- Customize the Esri Navigator map

Or

- Use all your own data

Workflow

ArcGIS Pro



ArcGIS Online
or
ArcGIS Enterprise



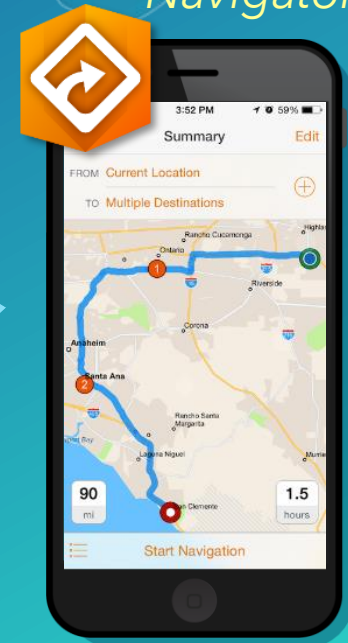
Share

Download

Package*

Side-load

Navigator



**Requires Network Analyst Extension*

Customize the Esri Navigator map



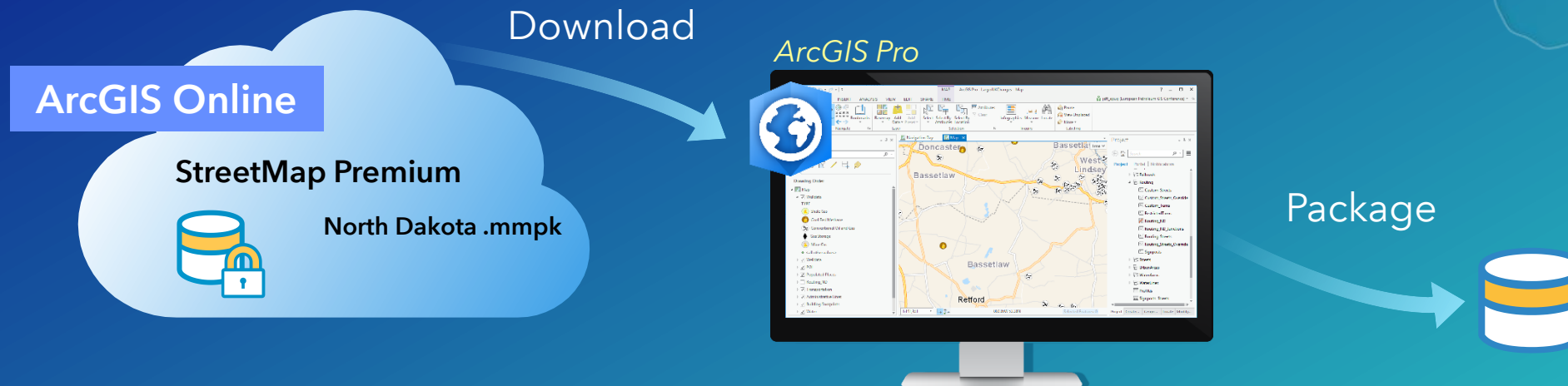
- Add operational layers
- Add or remove locators
- Create travel modes
- Replace network dataset
- Clip to an area of interest

Demo

Customize the Esri Navigator map

Demo Review

Customize the Esri Navigator map



- Add operational layers
- Add or remove locators
- Create travel modes
- Replace network dataset
- Clip to an area of interest

Data Options

1. **Customize the Esri Navigator map**
 - Requires StreetMap Premium for ArcGIS Pro

Data Options

1. Customize the Esri Navigator map

- Requires StreetMap Premium for ArcGIS Pro

...with Custom Roads

- Requires StreetMap Premium Custom Roads

Customize the Esri Navigator map with Custom Roads



Demo

Customize the Esri Navigator map with Custom Roads

Demo Review

Customize the Esri Navigator map with Custom Roads



Data Options

1. Customize the Esri Navigator map

- Requires StreetMap Premium for ArcGIS Pro

...with Custom Roads

- Requires StreetMap Premium Custom Roads

Data Options

1. Customize the Esri Navigator map

- Requires StreetMap Premium for ArcGIS Pro

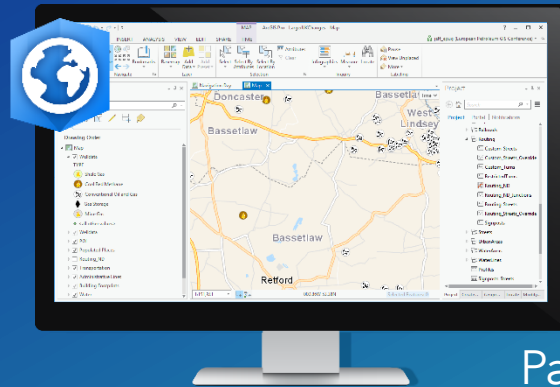
...with Custom Roads

- Requires StreetMap Premium Custom Roads

2. Use all your own data

Bring your own data

ArcGIS Pro



- Basemap display
- Geocoding search
- Network routing

ArcGIS Online
or
ArcGIS Enterprise

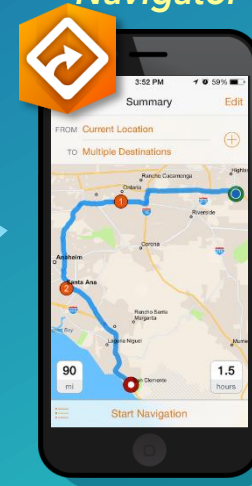
Package

Share

Download

Test

Navigator



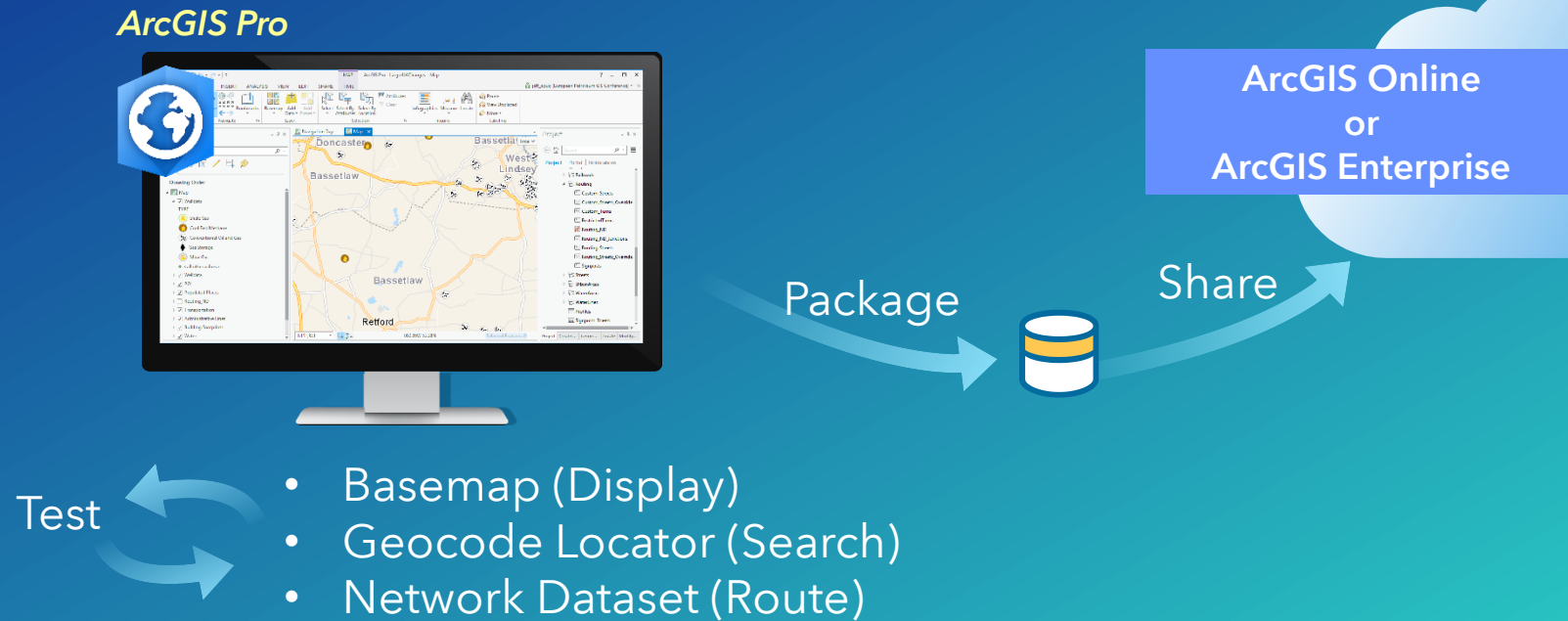
Use

Demo

Bring your own data

Demo Review

Bring your own data



Summary

- **Three components of a Navigator map**
 - Search, route, display
- **Two data options**
 - Modify the Esri map... with Custom Roads
 - Bring your own data

Resources

- Navigator free trial: <http://go.esri.com/navigatortrial>
 - StreetMap Premium for ArcGIS: www.esri.com/data/streetmap
 - ArcGIS Pro Help: <http://pro.arcgis.com/en/pro-app>
 - Training Seminar: <http://esriurl.com/CustomNavMap>
 - Tutorials: <http://doc.arcgis.com/en/navigator/prepare-maps/prepare-maps.htm>
 - GeoNet community: <https://geonet.esri.com/groups/navigator>
-
- Scott: ssandusky@esri.com
 - Mark: mbockenhauer@esri.com

Other Sessions this week

- **Optimizing Field Operations with ArcGIS Apps**
 - Fri 9:00 - SDCC Room 05A

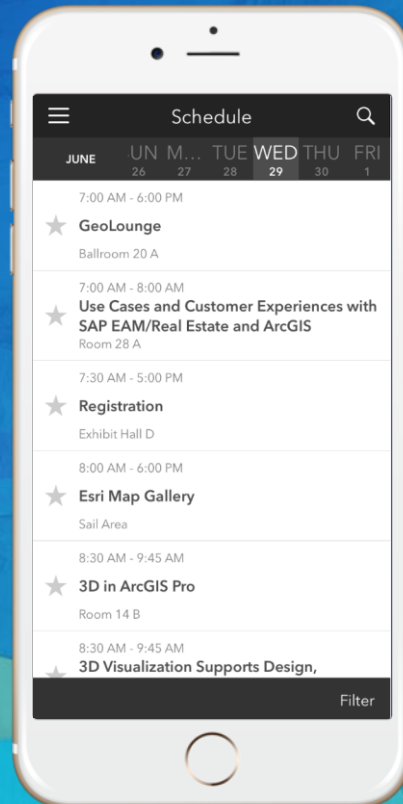
Please take our Survey

Your feedback allows us to help maintain high standards and to help presenters

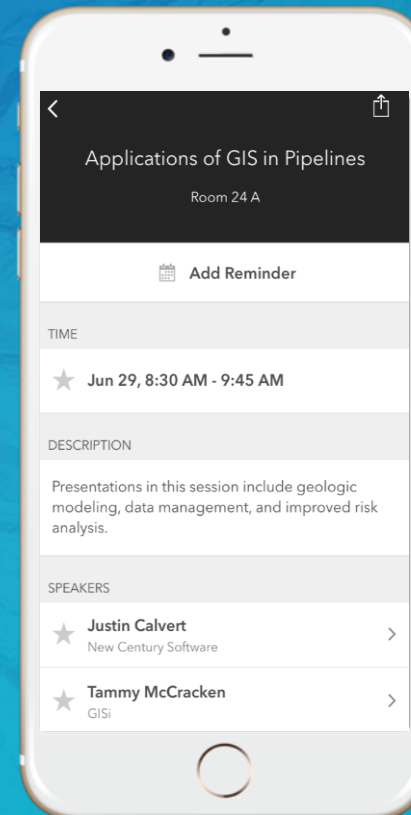
Find your event in the
Esri Events App



Find the session
you want to review



Scroll down to the
bottom of the session



Answer survey
questions and submit

