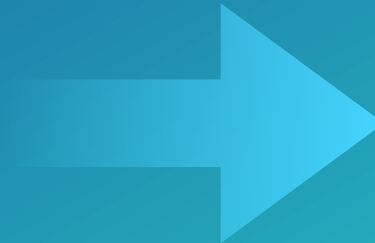
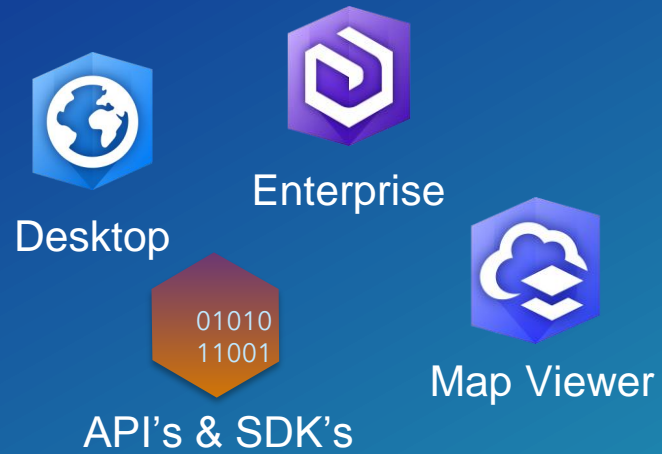


Sharing Routes for Field Use

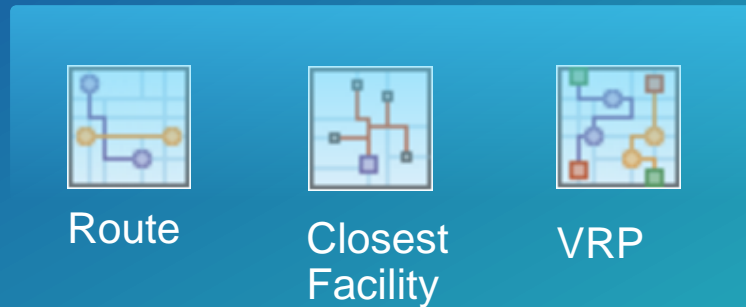
Frank Kish
Scott Sandusky

Sharing Routes with the Field

Route Planning in the Office



Drivers in the Field



Stop & Route Sharing Implementation

1. App Link

- Stops & stop information

2. Preplanned Route

- Stops & stop information, route information, travel mode, barriers

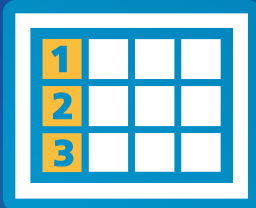
What is an App Link?

- Pass information into an application, through a defined schema or specification.
- “Deep Link”
- Navigator for ArcGIS supports App Links, through the Navigator URL Scheme.
- Documentation: <https://github.com/Esri/navigator-integration>

Sending Stops to Navigator

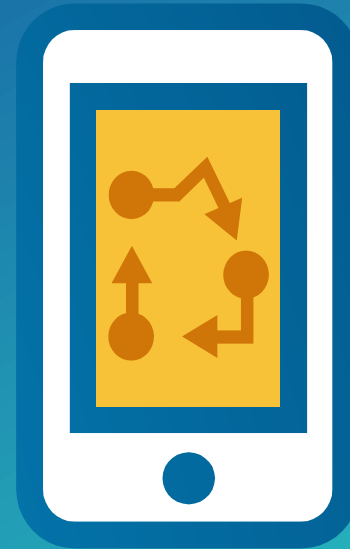
App Link

Stop list



- Location or address
- Stop name
- Stop sequence

Navigator for ArcGIS





Navigator URL Scheme

Supported Arguments:

- **start** - Start location
- **stop** - Location of a stop
- **stopName** - Name of stop
- **callback** - Callback URL scheme
- **callbackPrompt** - Prompt displayed in the app
- **optimize** - Boolean to determine if route is optimized
- **travelmode** - Travel mode used when calculating the route

Implementation Patterns

App Link



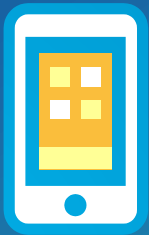
- Host a **web page** with links



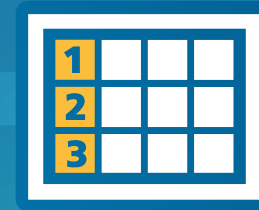
- Email or text **message**



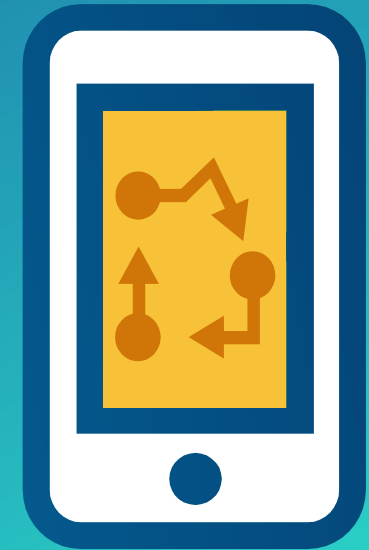
- Email or text **attachment**



- Custom **app**



Navigator for ArcGIS



App Link

Example Workflow: Pro, Python, and Email



Demo

App Link: [ArcGIS Pro, Python, and Navigator](#)

Preplanned Routes

- Back-office optimization needs to be shared with field workers
- Item stored in the portal as a Route Layer item
- Mobile clients connect, download, and follow route geometry
 - **Share** easily with drivers
 - **Update** when things change
 - **Consistent** across the organization



Preplanned Routes

- Stops & stop information (time windows, service time, curb approach, etc.)
- Route Geometry
- Directions
- Travel Mode
- Barriers

Demo

Preplanned Routes and ArcGIS Online

Preplanned Routes



Plan Routes



Directions Widget



Runtime



ArcGIS Online

Preplanned Routes: Today & the Road Ahead

- Today: Plan, edit, and save routes in Online
- Today: consume preplanned routes in Runtime
- Pro 2.1 (Dec): Save routes to Online / Enterprise
- 2018: Navigator

Summary

- **App Link**
 - Today: Navigator
 - Create stop lists with scripting
- **Preplanned Route**
 - Today: Online, Runtime
 - Soon: Pro, Enterprise, Navigator

Resources

- App Link GitHub repo: <https://github.com/esri/navigator-integration>
- ArcGIS Pro Add-In: coming soon as download in ArcGIS Online download
- Frank: fkish@esri.com
- Scott: ssandusky@esri.com

Other Sessions this week

- **Navigator for ArcGIS: Creating Custom Nav Maps**
 - Thurs 1:30 - SDCC Room 07A
- **Navigator for ArcGIS: An Introduction**
 - Wed 10:15 - SDCC Ballroom 06B
 - Thurs 10:15 - SDCC Ballroom 20D
- **Routing with Travel Modes**
 - Wed 2:30 - SDCC Demo Theater 07
- **ArcGIS Field Apps Working Together**
 - Tues 4:30 - 5:15
 - SDCC - Demo Theater 12 - Apps

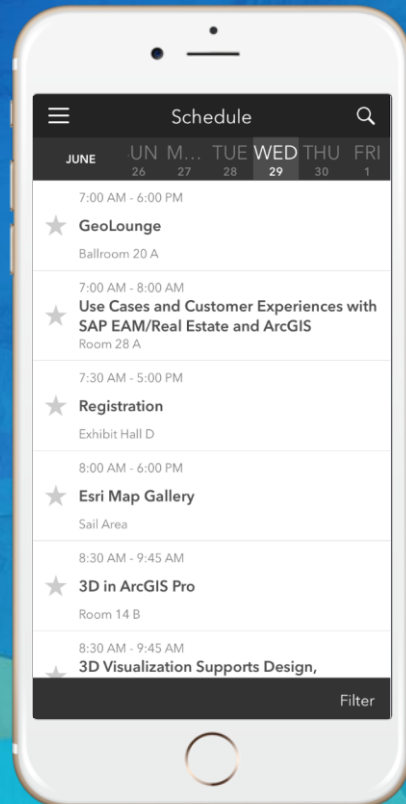
Please take our Survey

Your feedback allows us to help maintain high standards and to help presenters

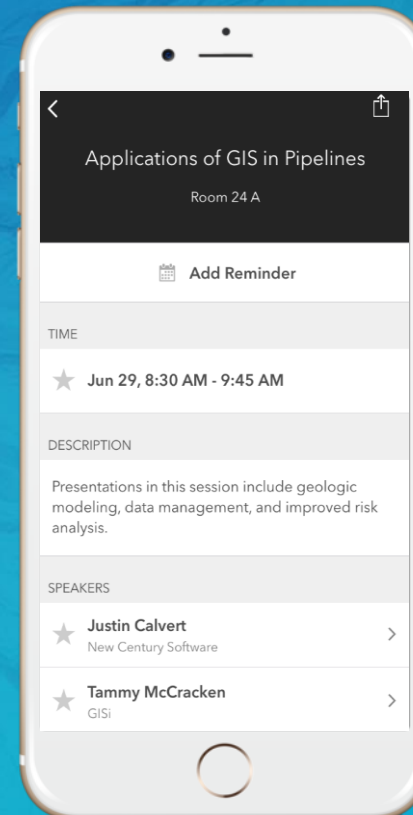
Find your event in the
Esri Events App



Find the session
you want to review



Scroll down to the
bottom of the session



Answer survey
questions and submit

