

# Get Off Your As-Built: Modernize Your Workflow



AMERICAN WATER

---

Ann Myslinski

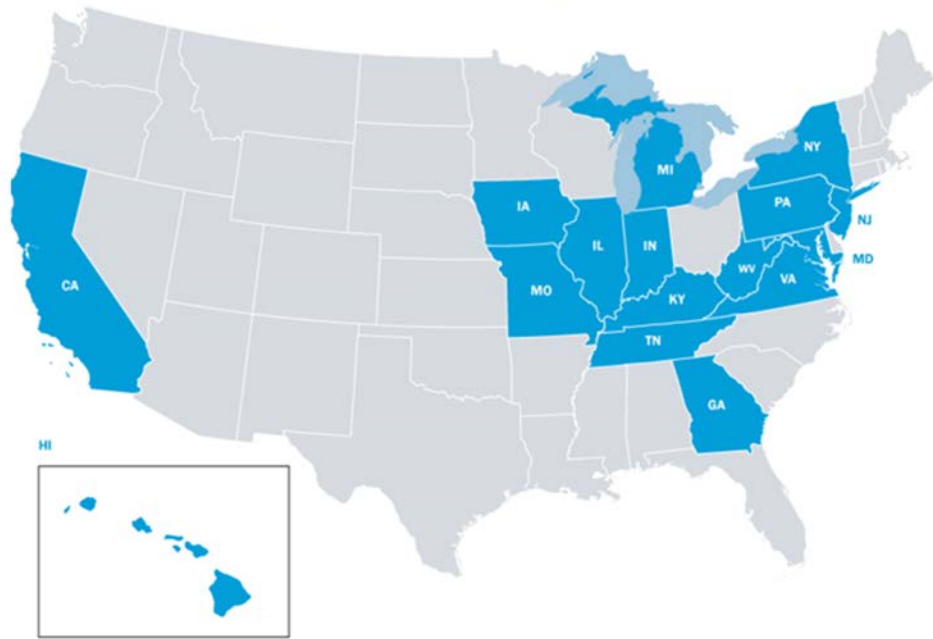
*Senior Technologist*



Allisyn Hudson Dunn, PhD

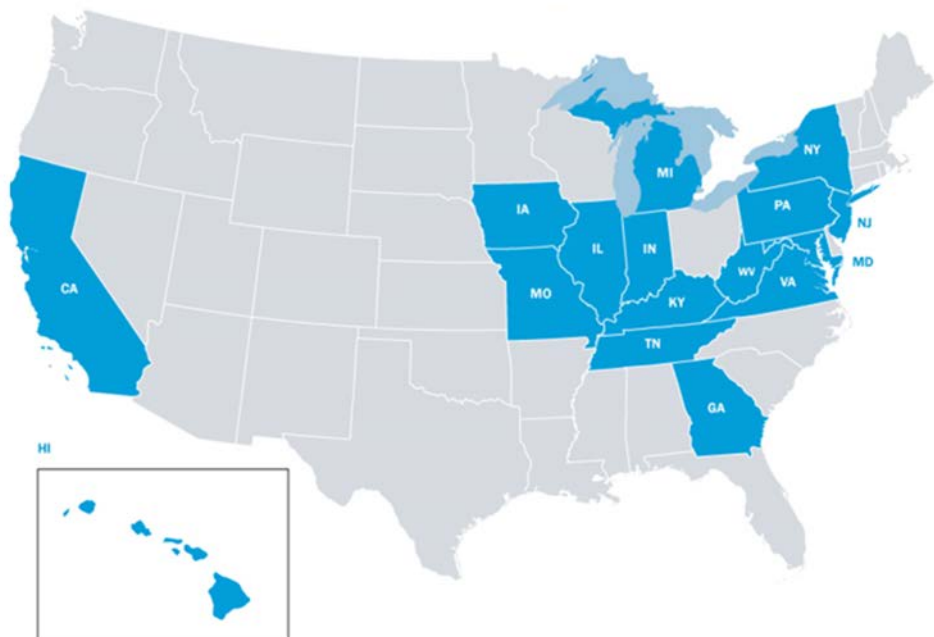
*GIS Project Manager*

### American Water's Regulated Presence



- Provides services to approximately 15 million people in 46 states and Ontario, Canada
- Treats and delivers more than one billion gallons of water daily
- Encompasses 16 regulated states with 12 GIS groups including our corporate T&I team

## American Water's Regulated Presence



- ~50,000 miles of mains and collection pipes
- ~50 GIS team members



- Specialize in Engineering, Inspection, GIS, and Software Solutions
- Serve transmission and distribution companies in more than 20 states
- Over 370 employees with diverse expertise



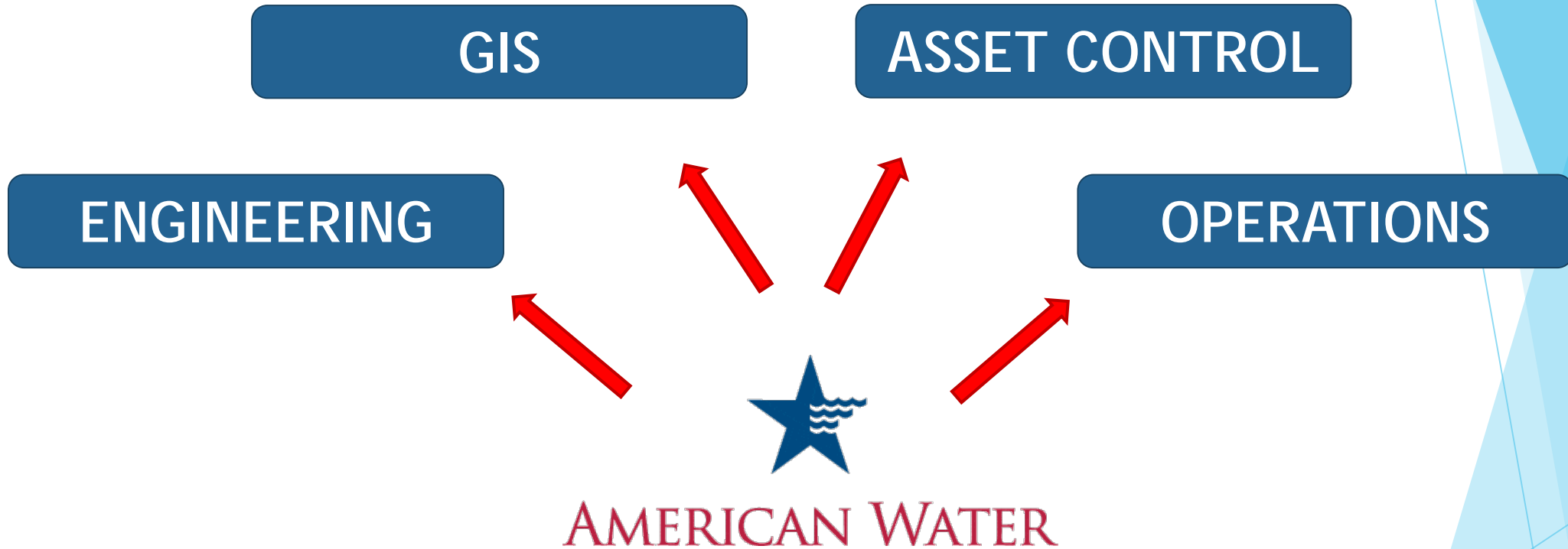
**AMERICAN WATER**

# Asset Management -- Business Processes

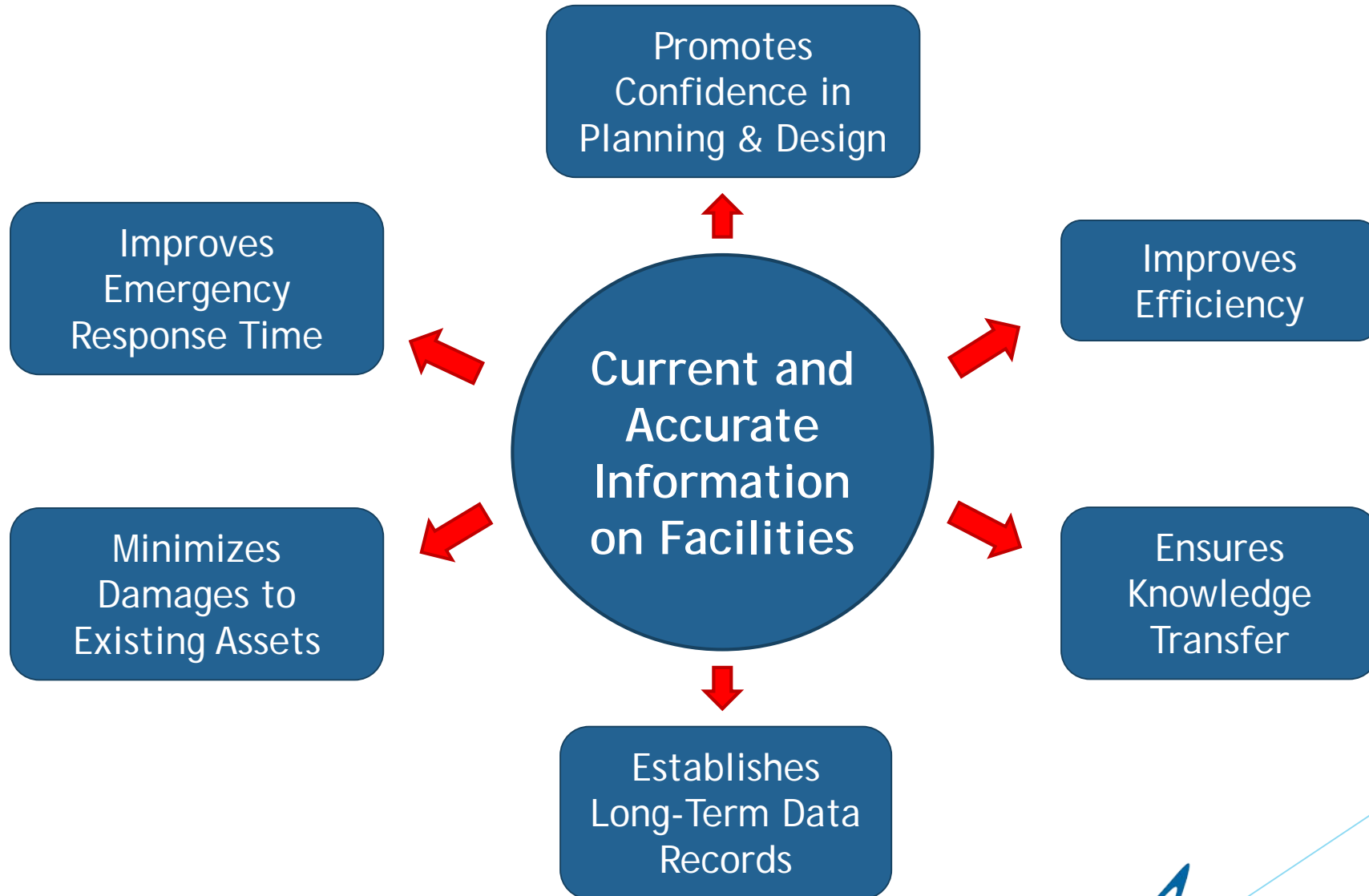


- Business Processes are a vital part of operations at AW
- Challenge: Different workflows can lead to inconsistency and inaccuracy in data
- Initial Goal: Standardizing Business Processes/Workflows and implementing best practices across the company
- Challenge: One solution may not fit all

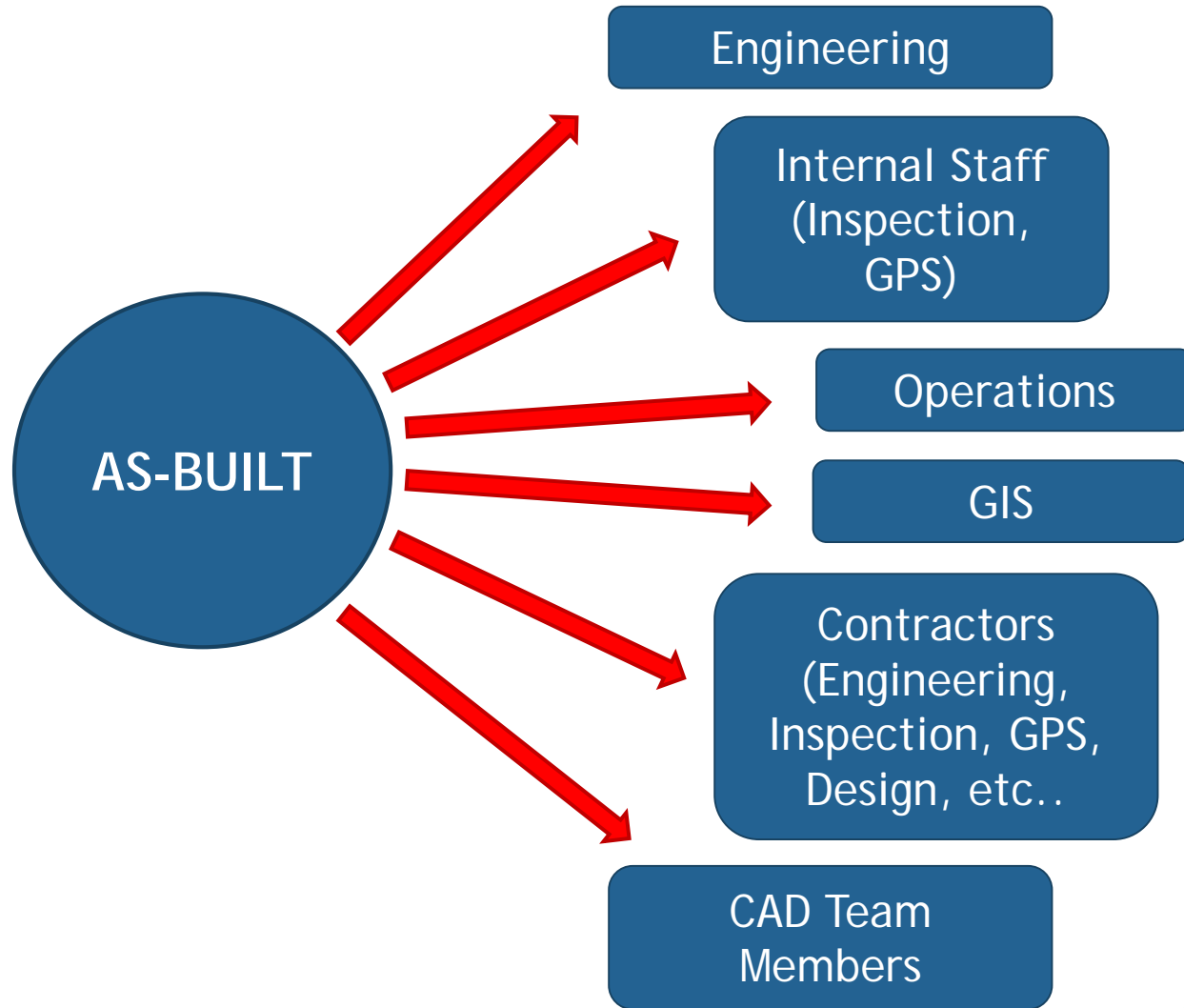
# Asset Management -- Business Processes



# As-Built



# As-Built





# As-Built

- History of them at AW
  - ❖ Paper As-Builts
  - ❖ Map Books
  - ❖ Back-logs
  - ❖ Resisting Technology



# As-Built: Tell Us Your Story

- Who has paper as-builts?



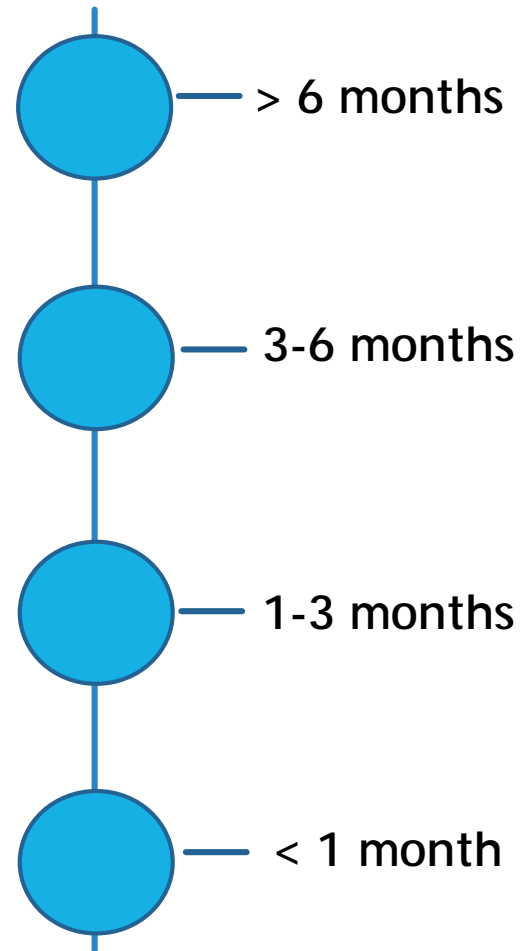
# As-Built: Tell Us Your Story

- Who never gets an as-built, or, gets incomplete documentation?

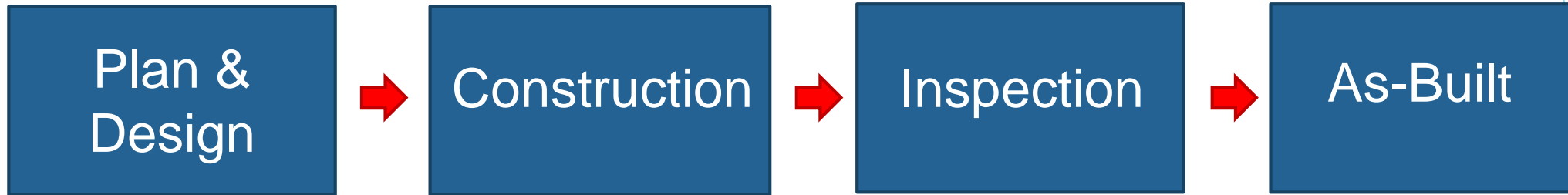


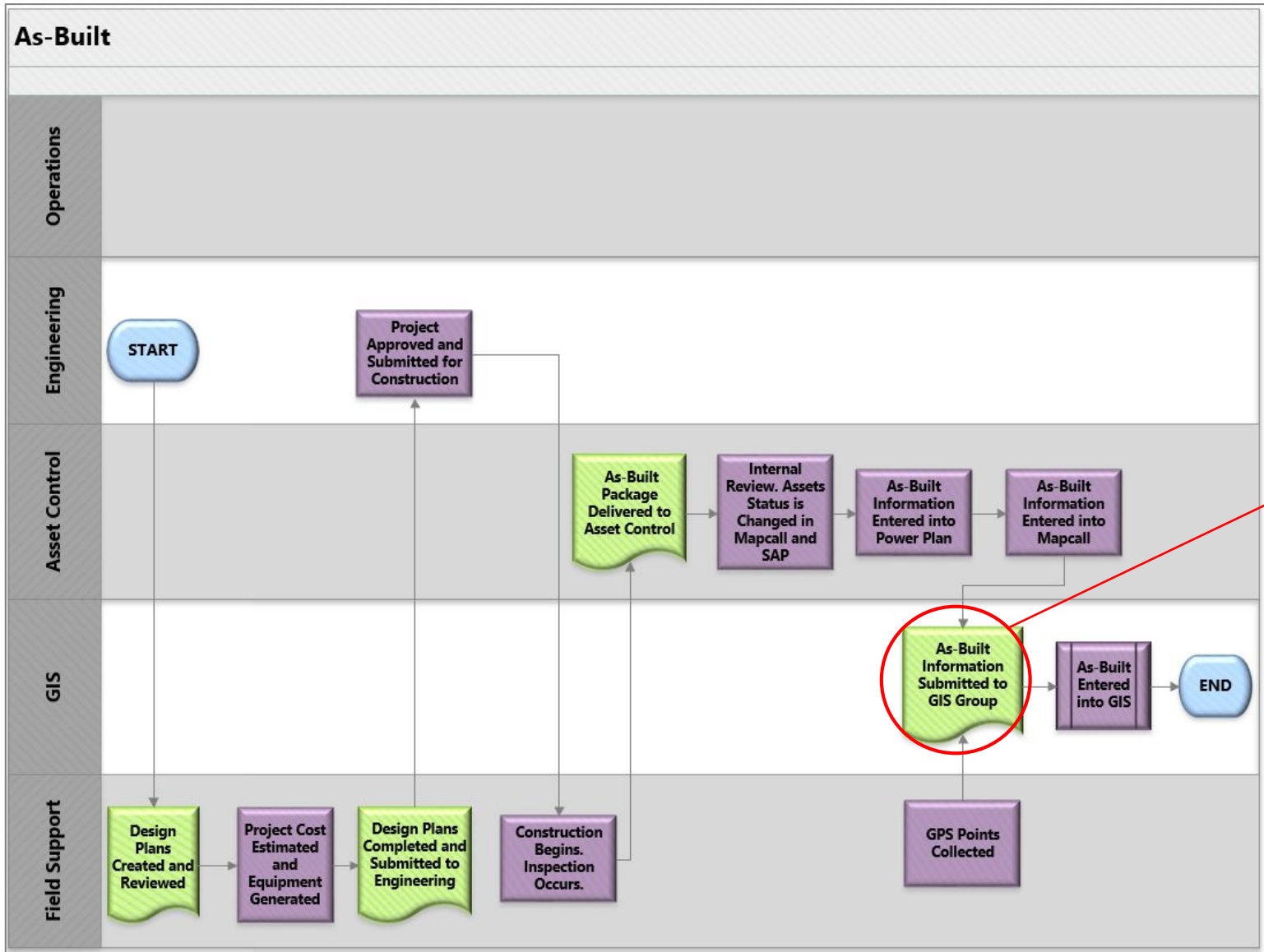
# As-Built: Tell Us Your Story

- Where do you feel like your current process places you on this scale?



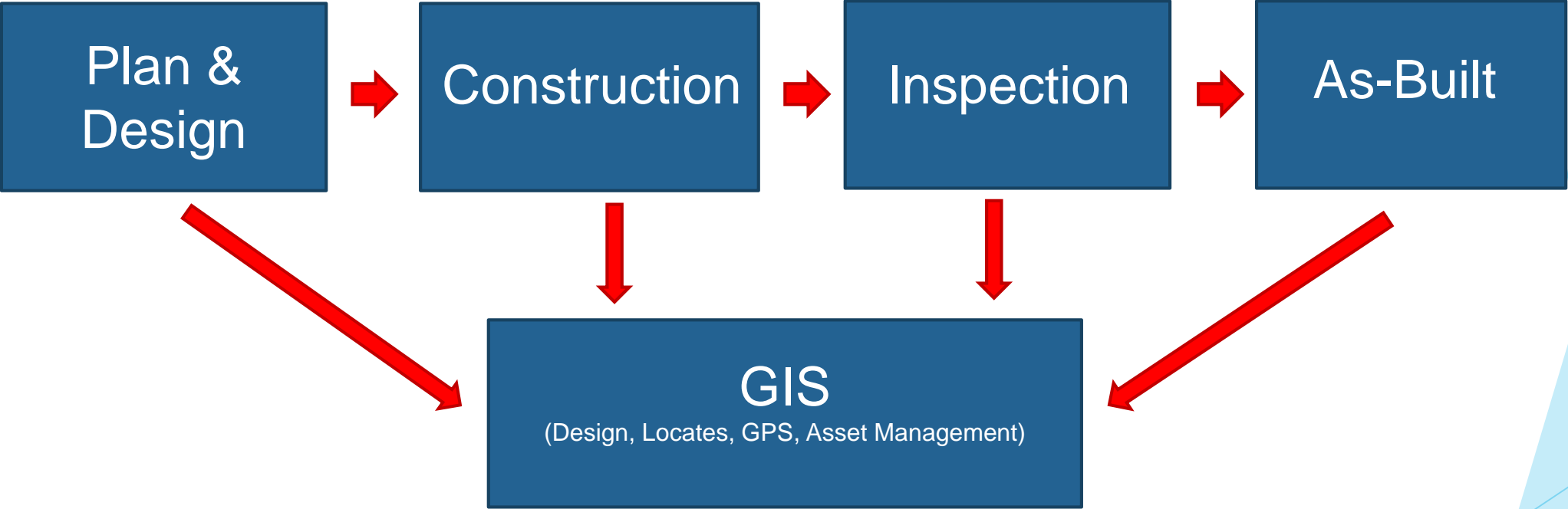
# Traditional As-Built



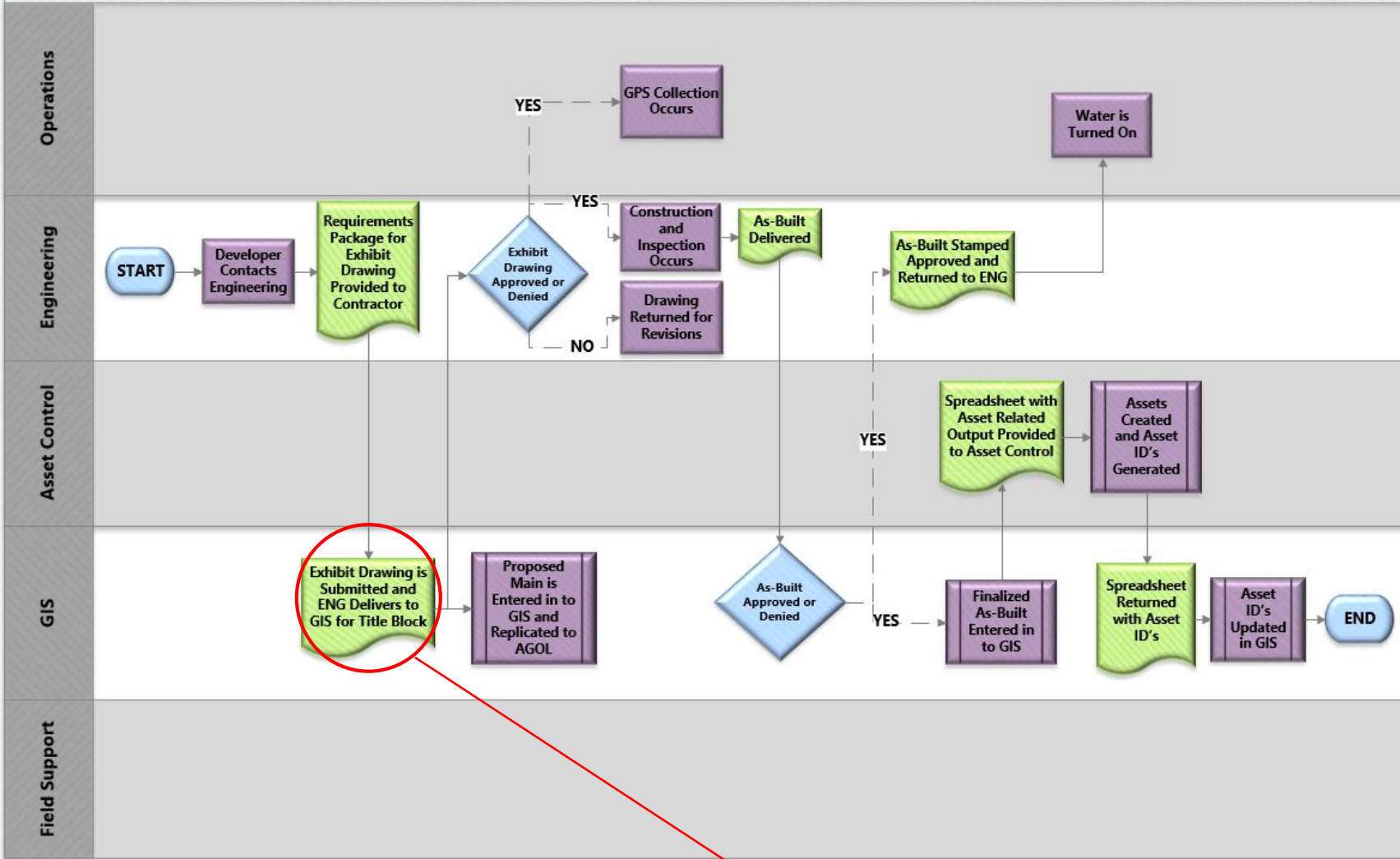


GIS Enters the Picture at step 10

# Modernized As-Built



# Digital As-Built (Developer)



GIS Enters the Picture at Step 3



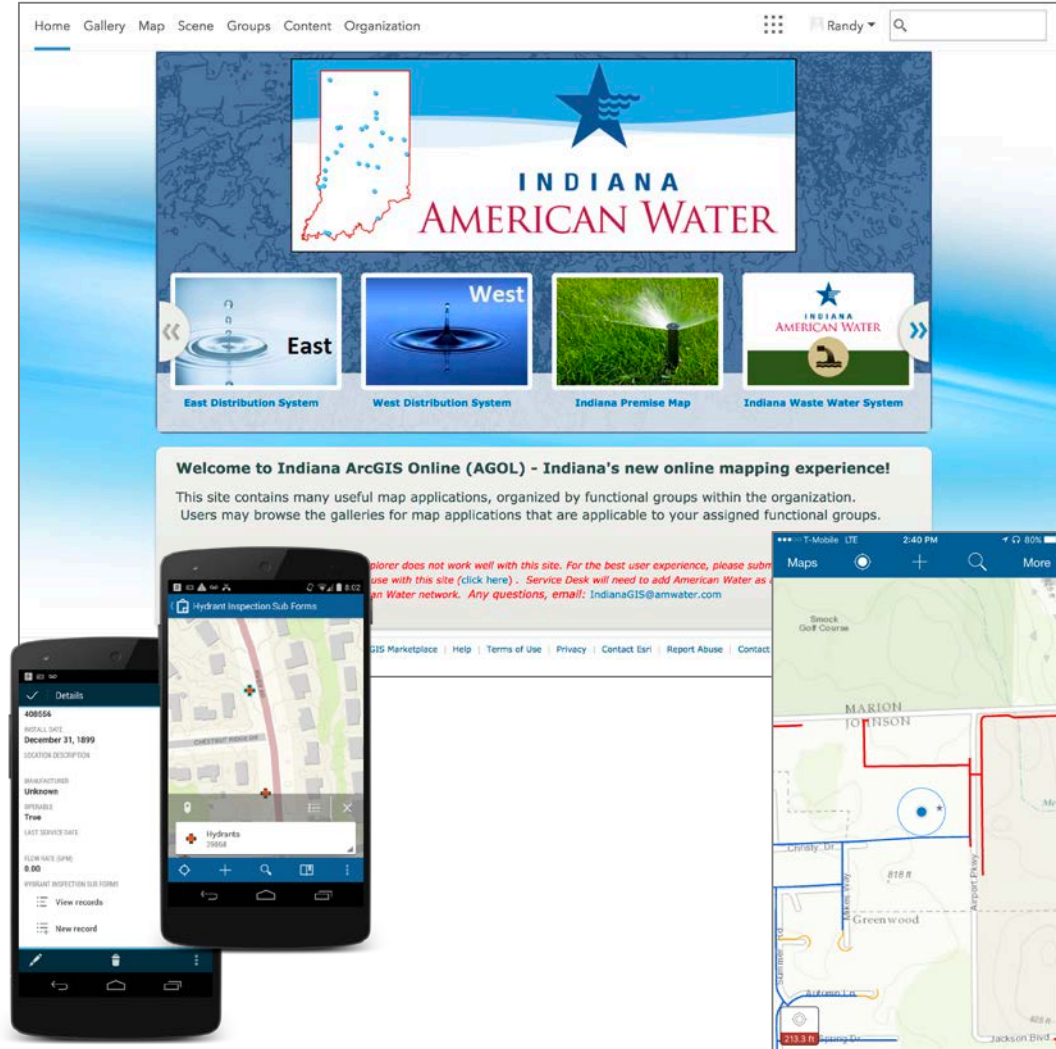


# Modernize Your Workflow



- How can we bring it in to the future?
- Use technology and innovation to modernize what has been documented with paper for so many years.
  - ❖ Esri Collector and Survey 123

# Modernize Your Workflow



- American Water has two excellent examples where Esri applications are helping to modernize not only their as-built process, but other operational workflows as well
- Randy Winston (GIS Project Manager, INAW)
- Mallory Weakland (GIS Analyst, PAAW)