



# ArcGIS for Mobile – An Introduction

Esri Pacific User Conference

October 13 – 14, 2014 | Sacramento

# Agenda

- **Welcome**
- **Why Mobile?**
- **Mobile Apps**
- **Preparing and publishing your data**
- **Esri Mobile platform landscape**
- **Q & A**

# It's a mobile world!

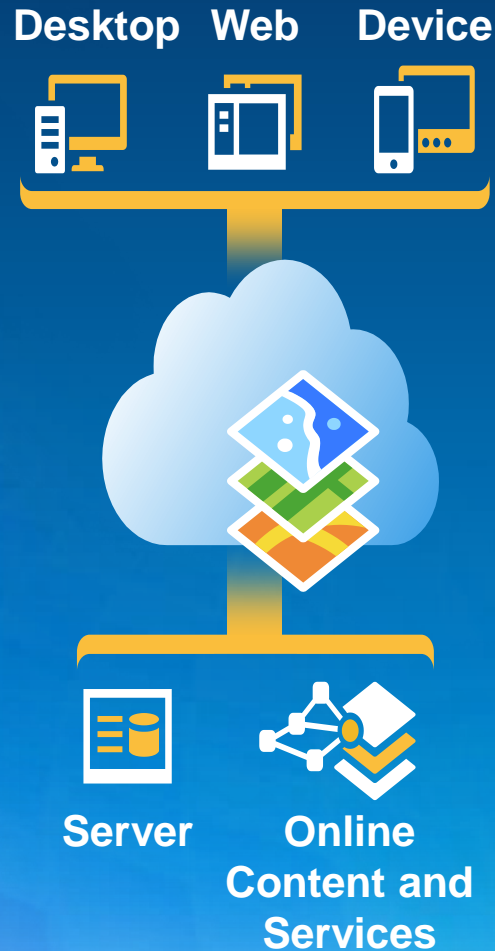
- **> 1 billion smart phones in 2013**
- **Up 38.4% over 2012**
- **1.7-1.9 billion new cellphones 2014**
- **GMIC 2014: >90% social interactions**
- **Mobile implies geography**



# Mobile is an integral part of the ArcGIS Platform

Enabling GIS Everywhere

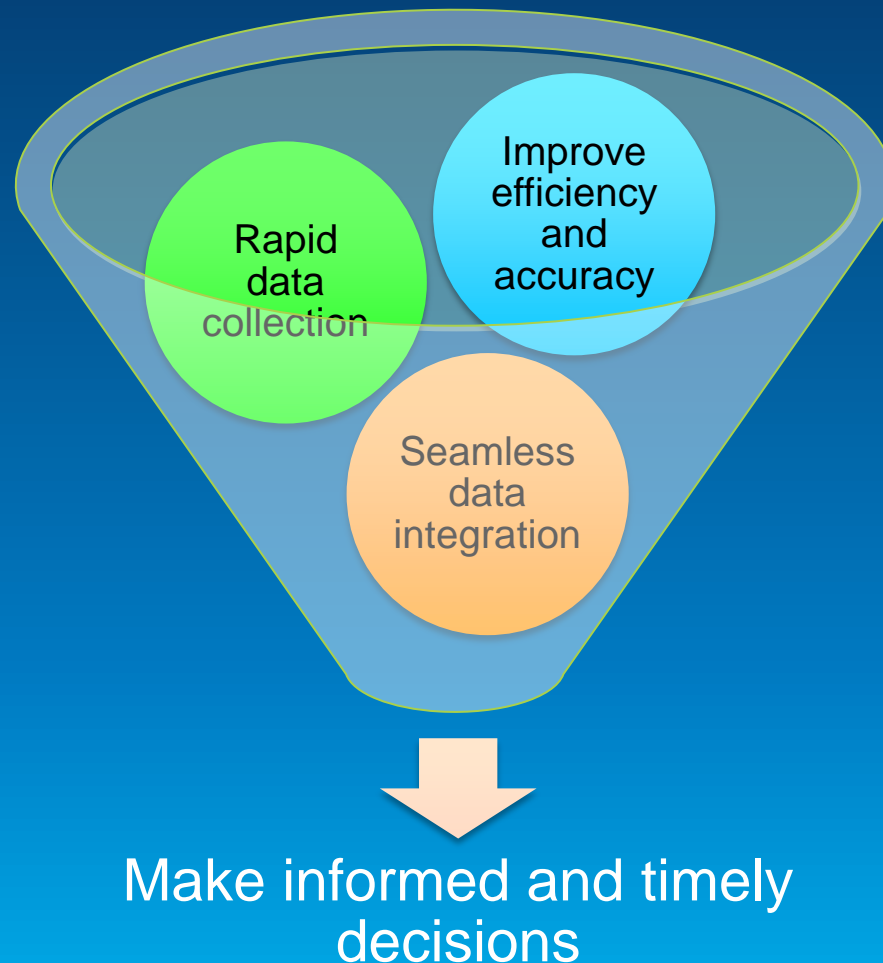
Simple  
Integrated  
Open



Web  
GIS

# Key benefits of ArcGIS mobile solutions

Leverage your investment in ArcGIS



# Explorer for ArcGIS

- View maps
- Explore data
- Share and collaborate
- Brief stakeholders



# Demo – Explorer for ArcGIS



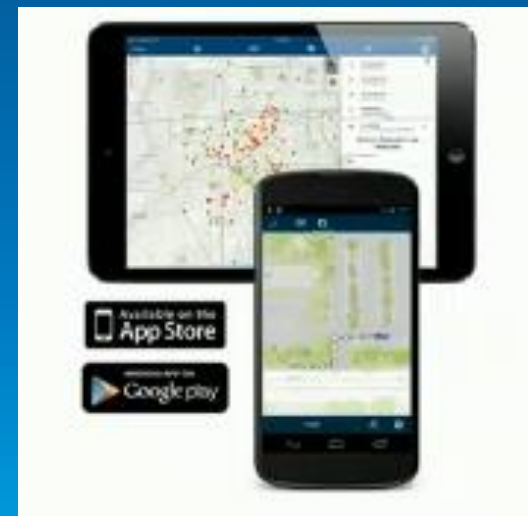
The screenshot shows the ArcGIS Explorer web interface. At the top, the ArcGIS logo is displayed in black, with the word "Explorer" in green below it. The interface features four main sections, each with a colored icon and a brief description:

- MAPS** (Green icon): Work with any map in your organization, or public maps online.
- DATA** (Red icon): Navigate and discover the geography and data in your map.
- COLLABORATE** (Orange icon): Present maps, analysis and ideas to others in your organization.
- SHARE** (Dark Green icon): Quickly and easily share a link or image of your map.

A prominent green "SIGN IN" button is centered below these sections. At the bottom of the page, there are two links: "Learn More" on the left and "Try Explorer" on the right. The background of the interface is white with green and grey geometric shapes at the bottom.

# Collector for ArcGIS

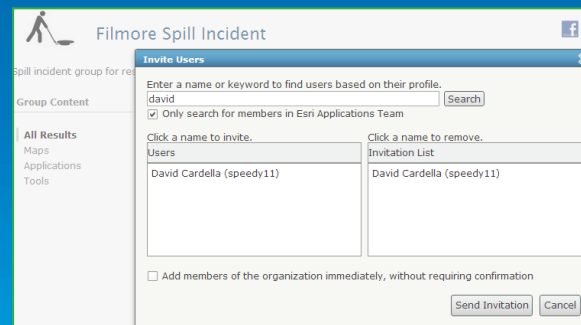
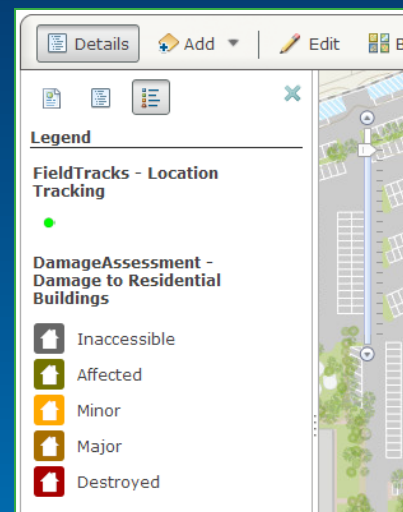
- COTS mobile app targets field workflow needs
- Collect and update data
- Complete intelligent data entry forms
- Integrated into the ArcGIS platform
- Offline editing now supported





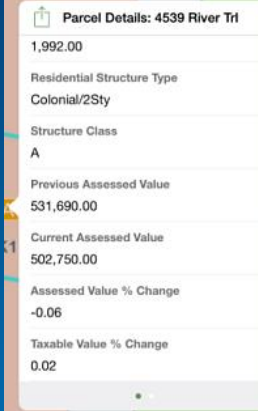
# Authoring maps for data collection

- **Create a web map:**
  - **Feature service layer (editable)**
  - **Location Tracking layer (optional)**
  - **Application settings**
- **Share using groups**
  - **Create Named Users for each field worker**
  - **Invite field workers to groups**
  - **Share maps into groups**



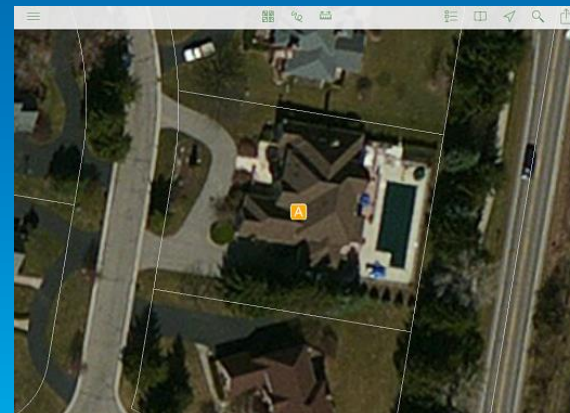
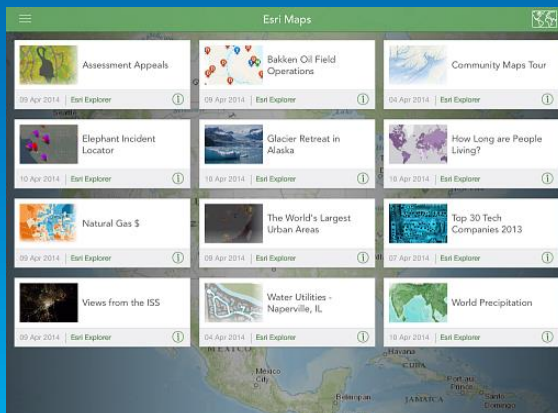
# Using Collector

- Download the app
- Logging in (User Identity)
- Finding your work location
- Exploring the map
- Collect data



Parcel Details: 4539 River Trl

1,992.00	
Residential Structure Type	Colonial/2Sty
Structure Class	A
Previous Assessed Value	531,690.00
Current Assessed Value	502,750.00
Assessed Value % Change	-0.06
Taxable Value % Change	0.02



# Working offline

- **Field user can take their map offline and**
  - **View and interact with map**
  - **Measure distances and areas**
  - **View popups and media**
  - **Collect and update features**
  - **Synchronize changes between field and office**



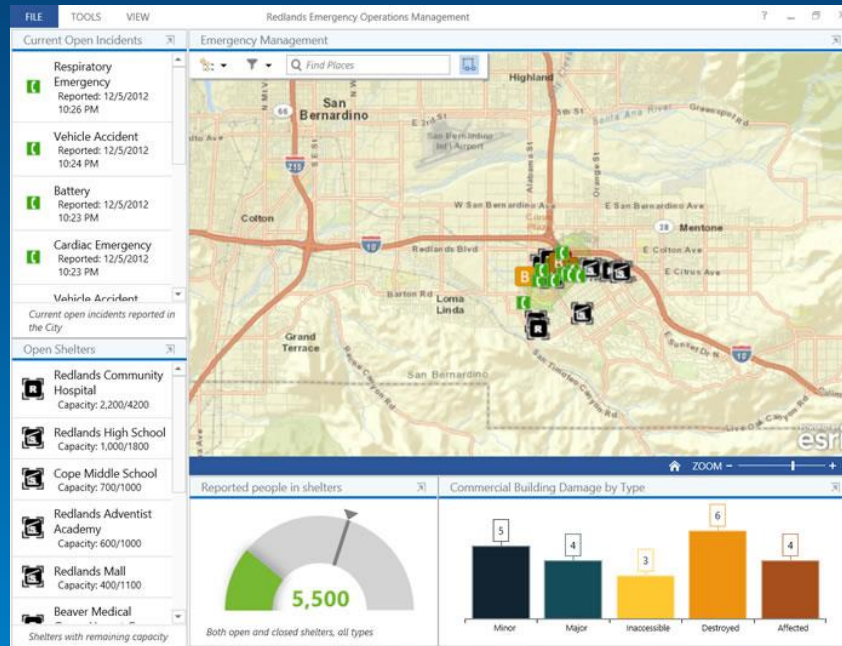
# Offline layer support

- Feature services that support editing operations (create, update, or delete, sync)
- Tile packages
- Esri basemap services



# Operations Dashboard

Viewing and monitoring data collected in the field back in the office



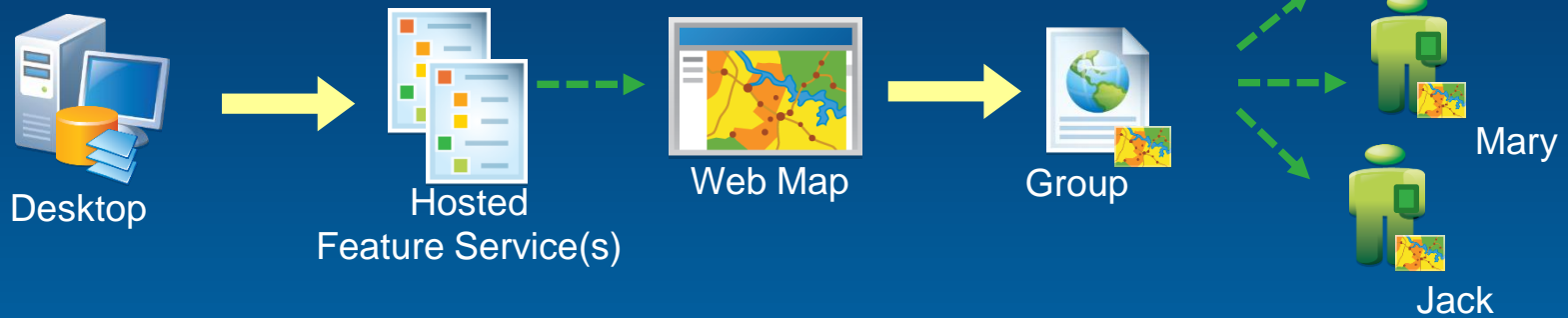
<http://doc.arcgis.com/en/explorer/>

# Demo – Collector and Dashboard

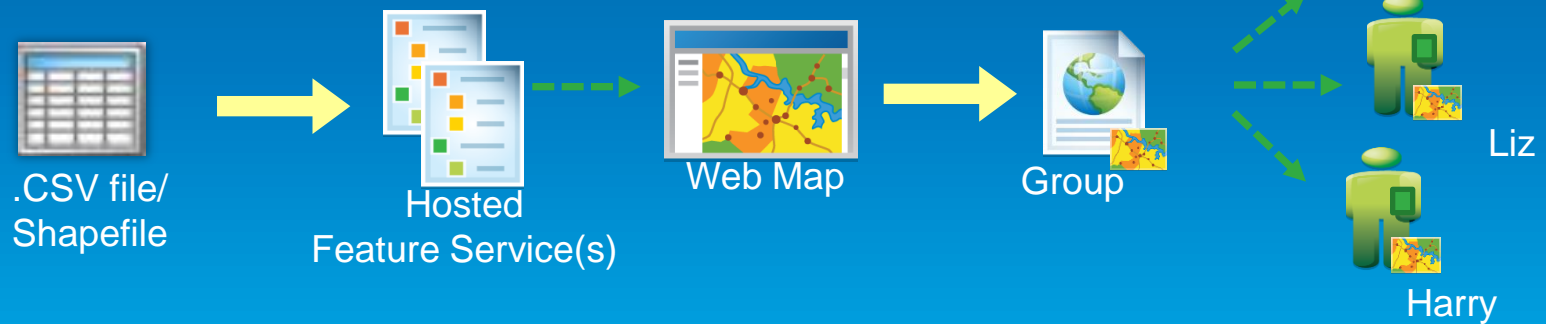


# Publishing workflows

## Hosted approach using Desktop

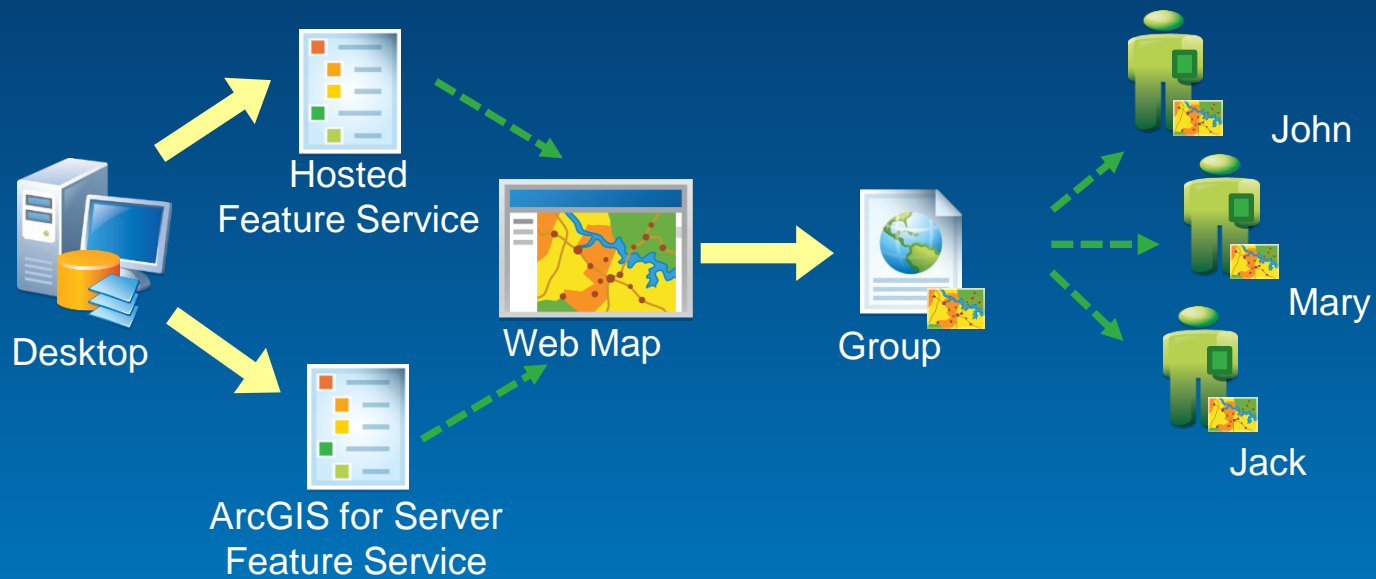


## Hosted approach using shapefiles/CSV



# Publishing Workflows

## Hybrid approach






# Demo – Publishing workflow

HOME GALLERY MAP GROUPS MY CONTENT MY ORGANIZATION

## Napa Earthquake Information Web Map



A Napa Earthquake Information Web Map

Web Map by cityofnapa  
Last Modified: September 22, 2014

★★★★★ (6 ratings, 205,502 views)

Facebook Twitter

Open in map viewer

OPEN ▾ SHARE

### Description

A Napa Earthquake Information Web Map.

### Map Contents

Water Leaks:  
<http://services.arcgis.com/KYQI4I6C3kTBM5OU/arcgis/rest/services/WaterLeaksSep19/FeatureServer/0>

Damaged Buildings:  
<http://services.arcgis.com/KYQI4I6C3kTBM5OU/arcgis/rest/services/DamagedBldgSep19/FeatureServer/0>

Debris Drop-off Sites:  
<http://services.arcgis.com/KYQI4I6C3kTBM5OU/arcgis/rest/services/Debris0915/FeatureServer/0>

# Mobile platform landscape

## Current offerings

### Windows Mobile

#### Apps

ArcGIS,  
ArcPad

Runtime SDK



### Windows

#### Apps

ArcGIS,  
ArcPad,  
Dashboard

Runtime SDK

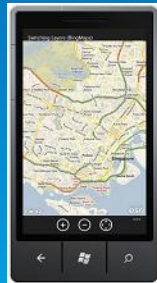


### Windows Phone

#### Apps

ArcGIS

Runtime SDK



### Apple

#### Apps

Collector,  
Explorer

Runtime SDK



### Android

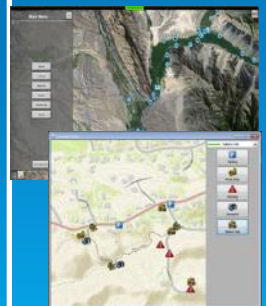
#### Apps

ArcGIS,  
Collector,  
Explorer  
(private Beta)

Runtime SDK



### Linux



# Mobile map and app design considerations

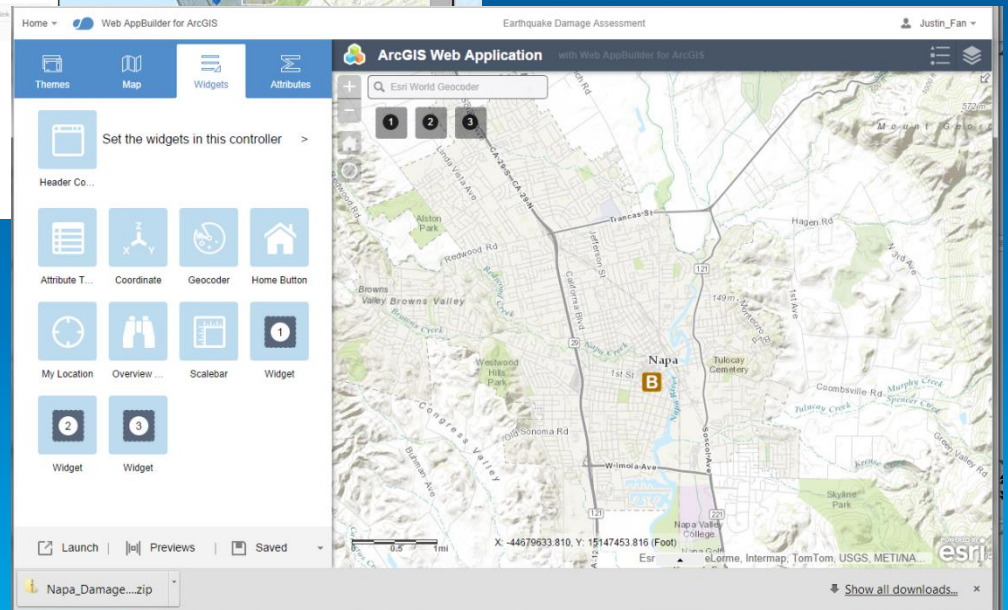
- Limited screen size
- Mobile/web maps are deep (window into world of information)
- Interactive/responsive (popups, media)
- Easy to read maps (operation layers vs. basemap)
- Strive for simplicity
- [http://proceedings.esri.com/library/userconf/proc14/tech-workshops/tw\\_671.pdf](http://proceedings.esri.com/library/userconf/proc14/tech-workshops/tw_671.pdf)



# Web AppBuilder for ArcGIS (Beta)

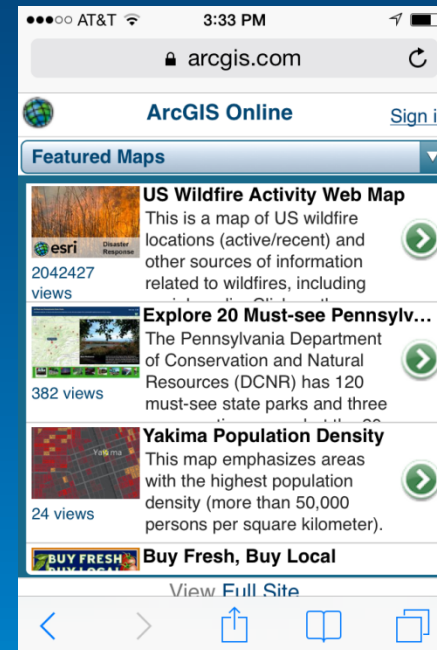
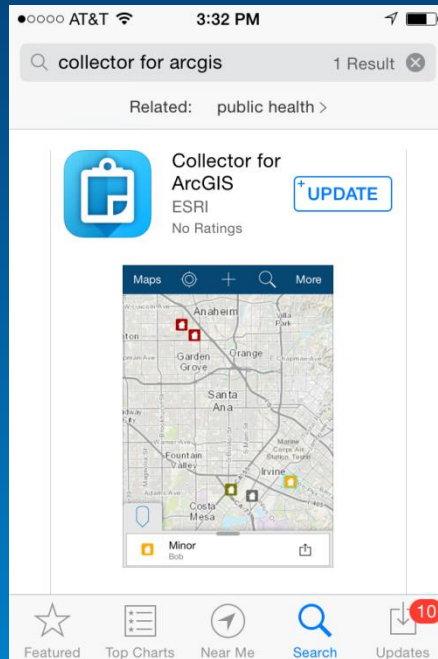


Create Web Apps for Your Organization That Run across Any Device



# Choose the right solution for you

## Native vs web apps



Build your solution based on your users' needs

# Resources

- [Training: Boost your productivity with Explorer for ArcGIS:](http://training.esri.com/gateway/index.cfm?fa=catalog.webCourseDetail&courseid=2817)  
<http://training.esri.com/gateway/index.cfm?fa=catalog.webCourseDetail&courseid=2817>
- [Training: Smartphone GIS: Capturing Data with Collector for ArcGIS:](http://training.esri.com/gateway/index.cfm?fa=catalog.webCourseDetail&courseid=2653)  
<http://training.esri.com/gateway/index.cfm?fa=catalog.webCourseDetail&courseid=2653>
- [Training: Monitoring Data Using Operations Dashboard for ArcGIS:](http://training.esri.com/gateway/index.cfm?fa=catalog.webCourseDetail&courseID=2607)  
<http://training.esri.com/gateway/index.cfm?fa=catalog.webCourseDetail&courseID=2607>
- [ArcGIS Online Documentation](http://doc.arcgis.com/en/arcgis-online/index.html) <http://doc.arcgis.com/en/arcgis-online/index.html>
- [Collector for ArcGIS Documentation](http://doc.arcgis.com/en/collector/) <http://doc.arcgis.com/en/collector/>
- [Explorer for ArcGIS Documentation](http://doc.arcgis.com/en/explorer/) <http://doc.arcgis.com/en/explorer/>

**Q & A**