



ArcGIS Pro: An Introduction

Harry Moore IV and Crystal Dorn

Esri Pacific User Conference

October 13 – 14, 2014 | Sacramento

Agenda

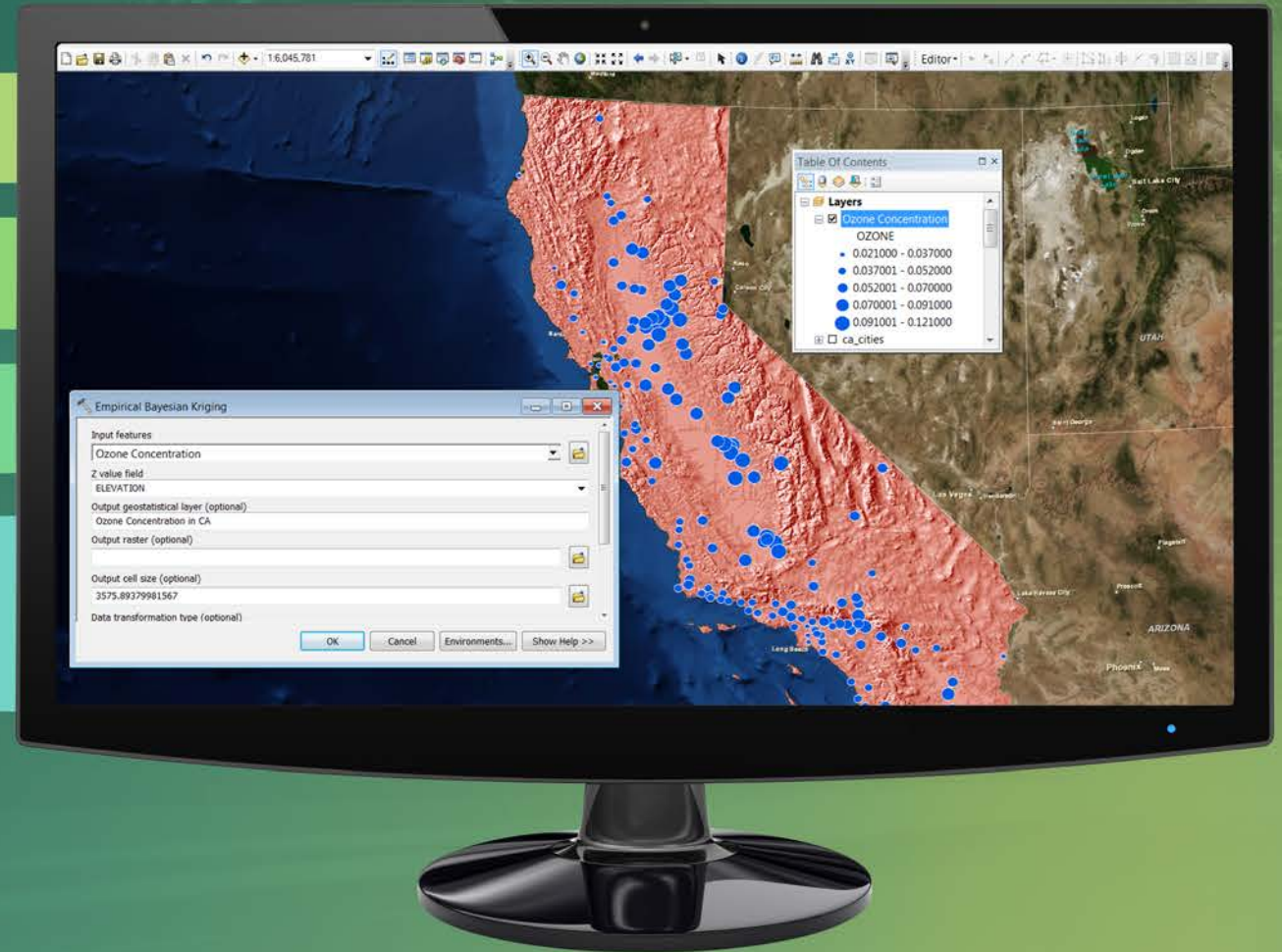
- **Introduction to ArcGIS Pro**
 - **What is ArcGIS Pro?**
 - **Functionality tour**
 - **Licensing**
 - **Additional resources**

Manage your Data

Perform Advanced Analysis

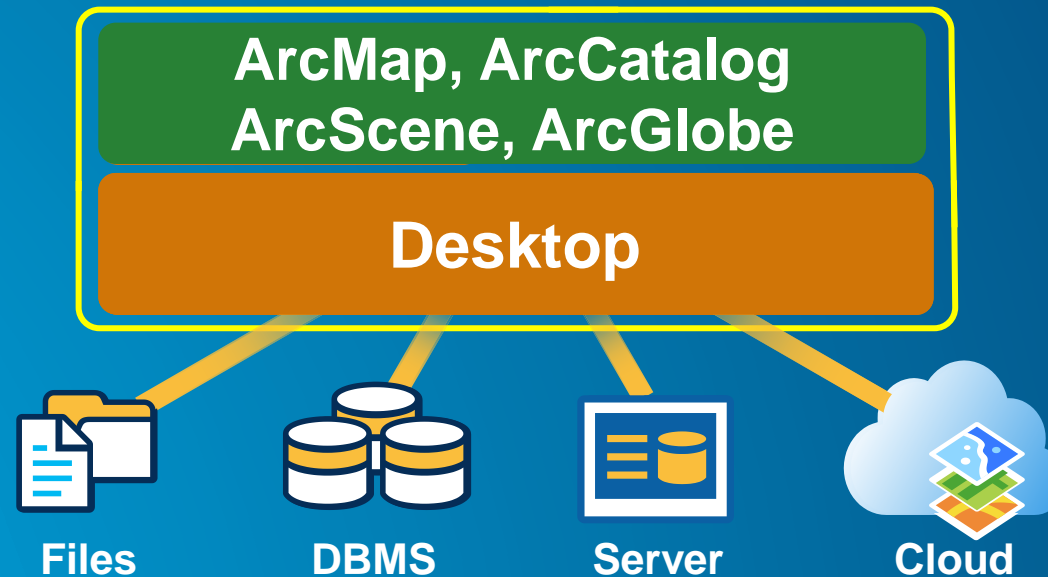
Model and Automate Workflows

Display your results on Professional Quality Maps



ArcGIS for Desktop *today*

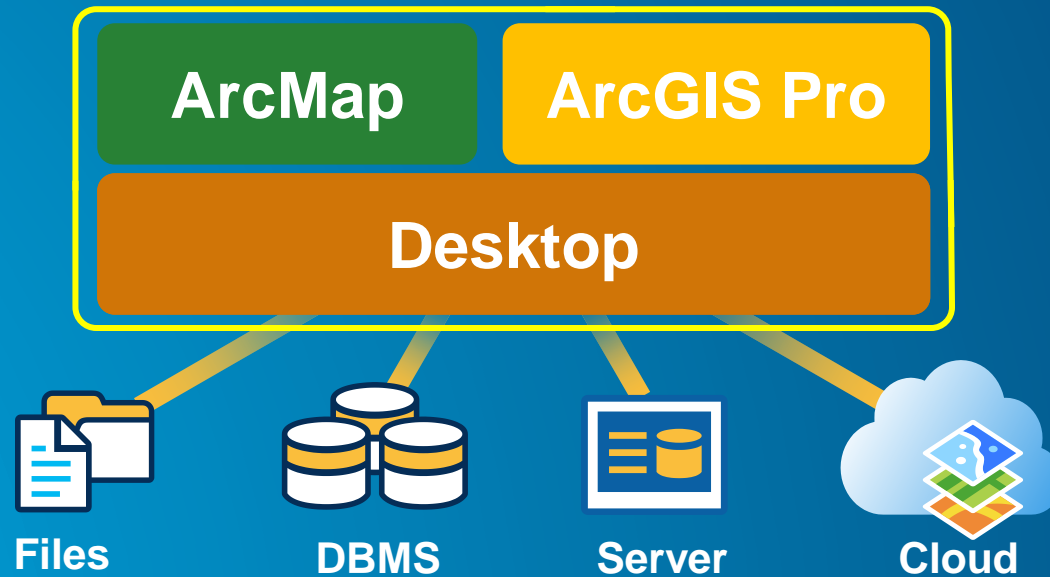
- Current release is version 10.2.2
- Licensed : Basic, Standard, Advanced



ArcGIS Pro

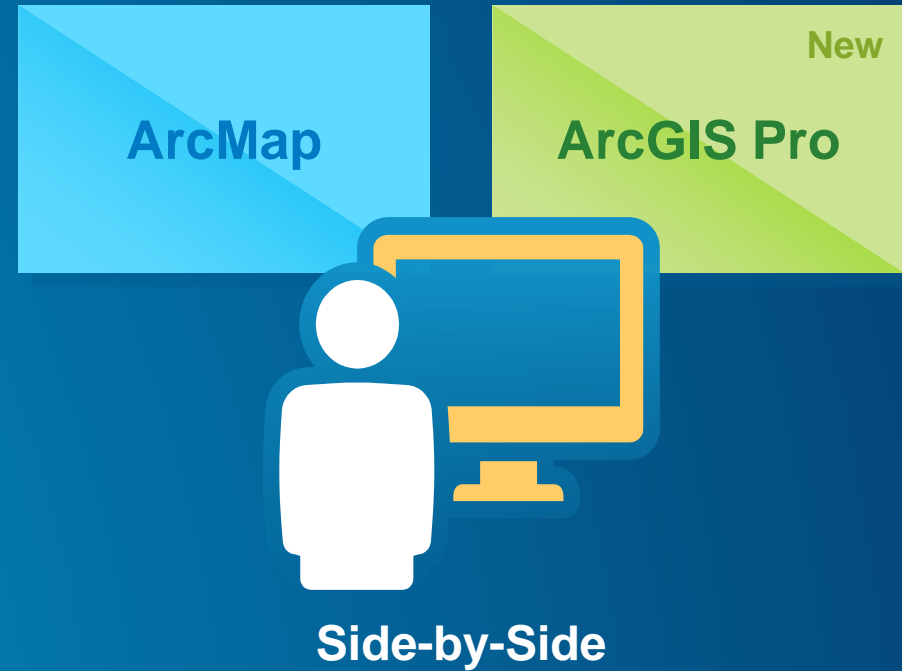
A New Application for Desktop

- Improved User Experience
- Very Fast, 64 bit
- Combined 2D and 3D
- Project focused
- Powerful Analysis
- Multiple Layouts



Is ArcGIS Pro a replacement for ArcMap? No

- It's a new application, not a replacement
- ArcMap continues to get better
- ArcMap and Pro run side by side



What you get with ArcGIS Desktop

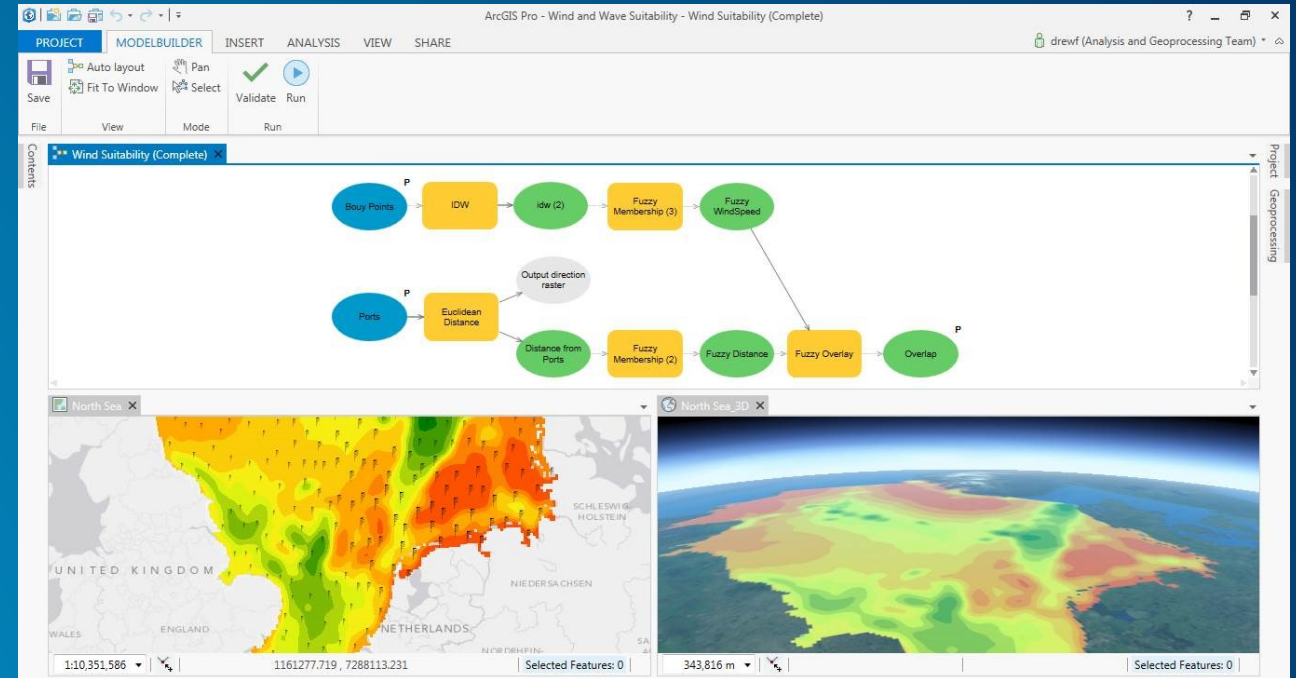


Web GIS

ArcGIS for Desktop
ArcMap + ArcGIS Pro

Familiar Extensions

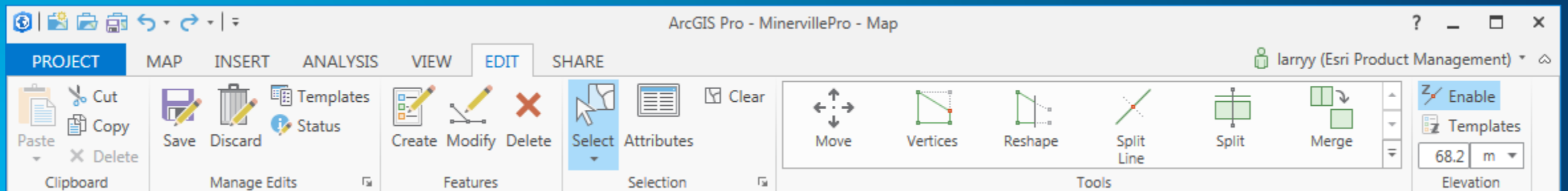
- Spatial Analyst
- 3D Analyst
- Network Analyst
- Geostatistical Analyst
- Data Reviewer
- Workflow Manager
- Data Interoperability



Demo: Getting Started

Editing and Data Management Overview

- **EDIT ribbon tab and Tools gallery**
 - Always editing all layers you have permissions to edit
- **Enhanced Undo/Redo**
- **Multiple workspaces edited at same time**
- **Tools available in multiple places (toolbar, modify pane, context menu)**
- **Tools always enabled**



Demo: Editing in ArcGIS Pro

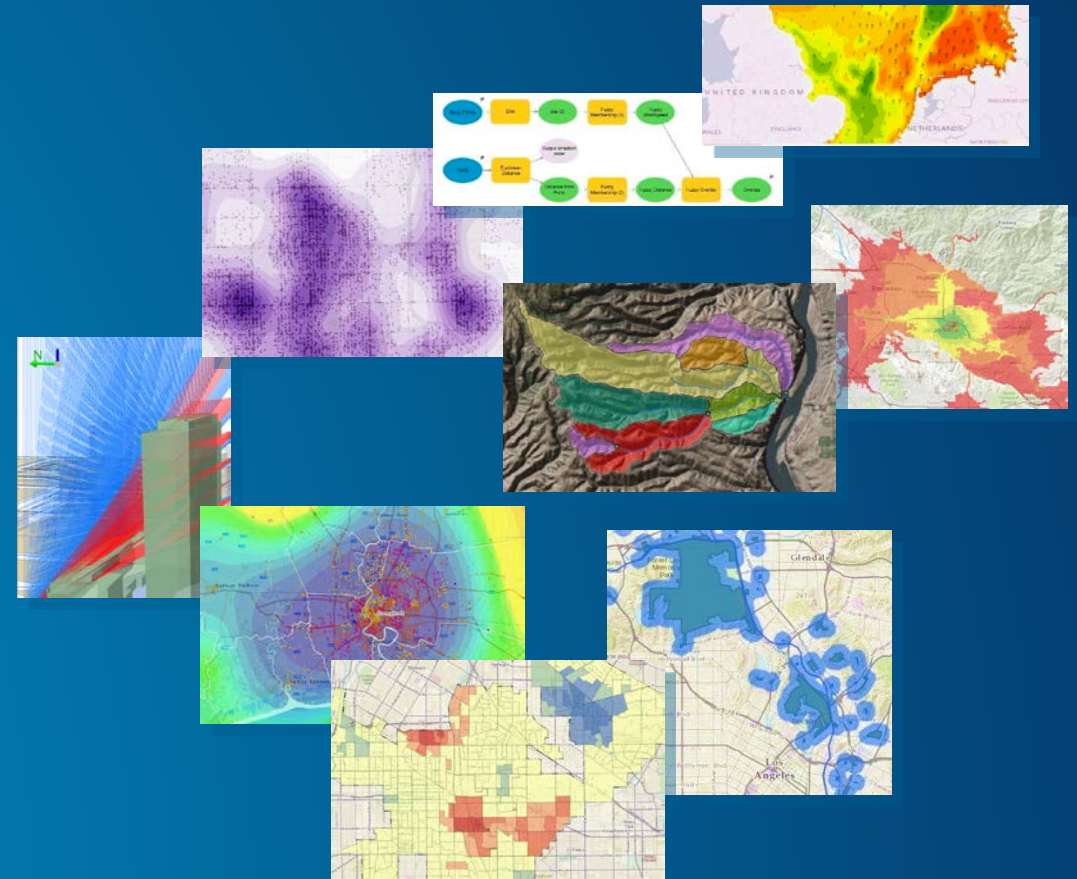
Post 10.3 – Editing and Data Management

- **Future releases:**
 - **Land Records**
 - Parcel fabric
 - Topology
 - COGO
 - **Utilities Networks**
 - **Annotation**
 - **Dimensions**
 - **Spatial Adjustment**

Analysis in ArcGIS Pro

ArcGIS Pro provides incredible capabilities for performing analysis in 2D and 3D

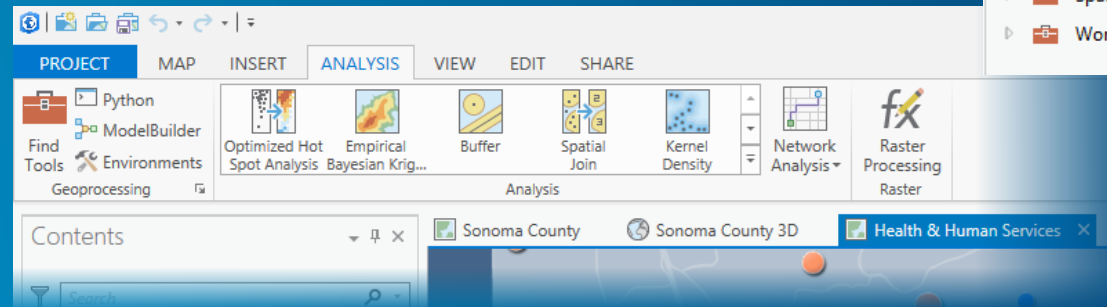
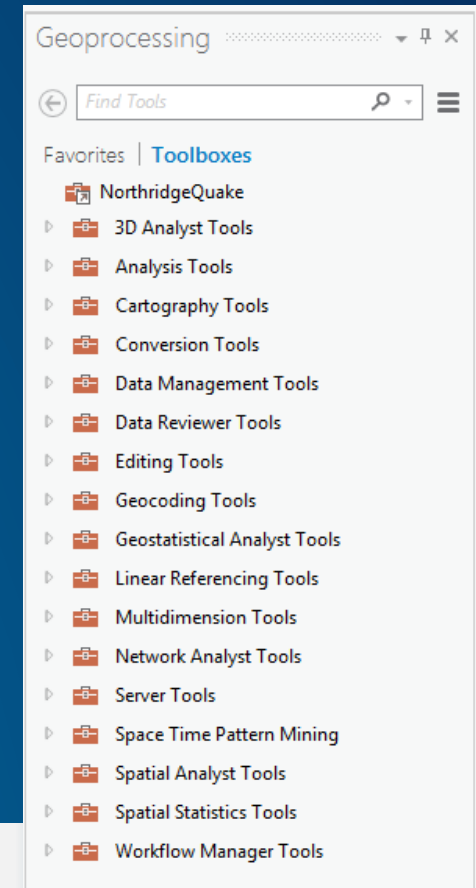
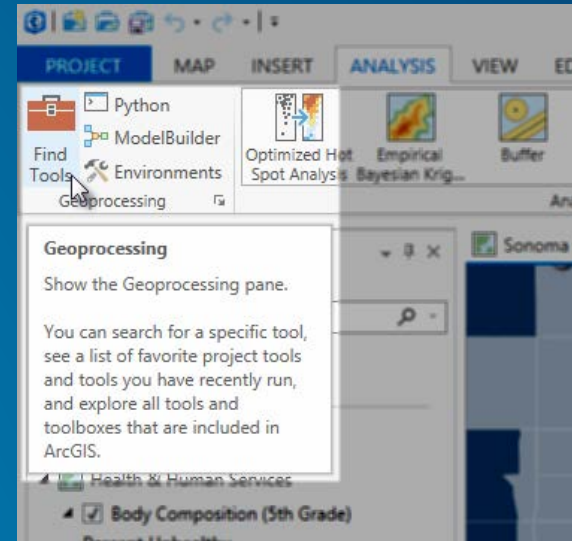
- Geoprocessing
- Raster analysis
- Network analysis
- 3d analysis
- Statistical analysis



Analysis in ArcGIS Pro

The ANALYSIS ribbon tab provides access to

- Gallery of powerful analytic tools
- Geoprocessing tools
- Python command line
- ModelBuilder
- Network analysis
- Imagery processing



Familiar user experience...

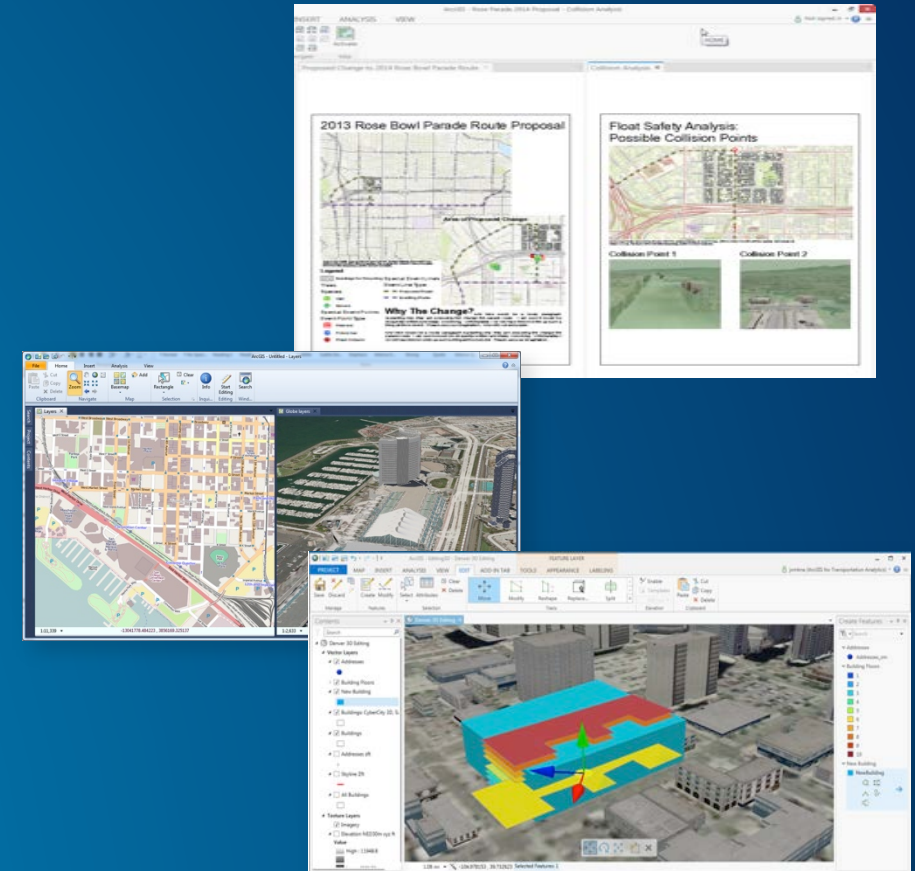
Demo: Analysis in ArcGIS Pro

Additional notes about Analysis

- **Most tools, models, and Python scripts from ArcMap will work in Pro, except:**
 - ArcObjects-based custom tools
 - Personal Geodatabase tools
 - Others documented [here](#)
- **Tip: Analyze for Pro tool**
- **Geostatistical Wizard added in later releases (but includes existing geoprocessing tools)**

Creating and Sharing Maps Overview

- Unified 2D / 3D mapping experience
- Multiple maps AND layouts in one project
- Modern graphics support
 - Anti-aliasing
 - True transparency support
 - Improved drawing performance and application responsiveness
- Enhanced PDF exporting



Integration with ArcGIS Online

- Content
 - ArcGIS Online
 - Your Organization
- Sharing
 - Publish and share maps

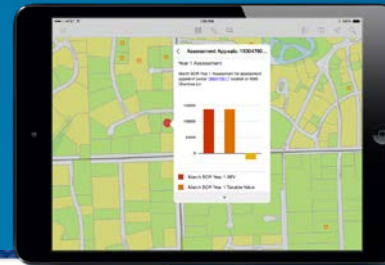
Story Maps



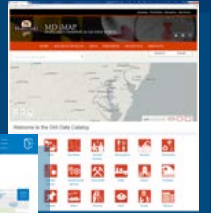
Dashboard



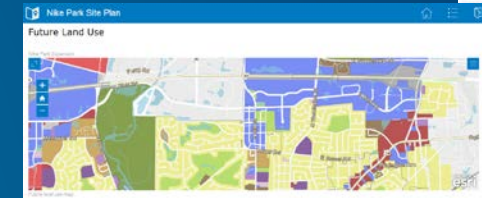
Explorer



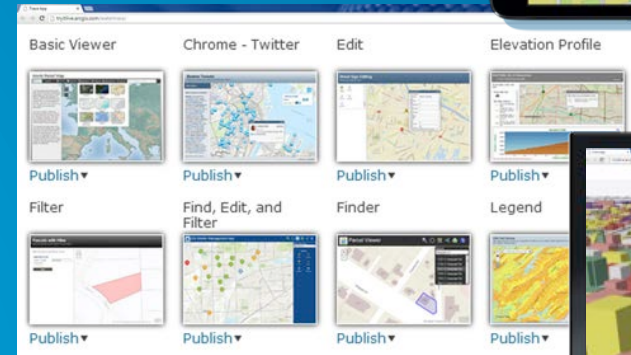
Open Data



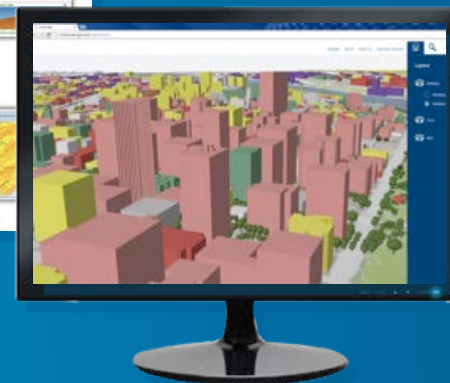
Briefing Book



Web Templates



Web Scenes



Collector



Demo: Creating and sharing maps

Getting ready for ArcGIS Pro

Know before you Pro!

ArcGIS 10.3 Pre-release is now available to all current customers!

For ArcGIS Pro (watch [this](#)):

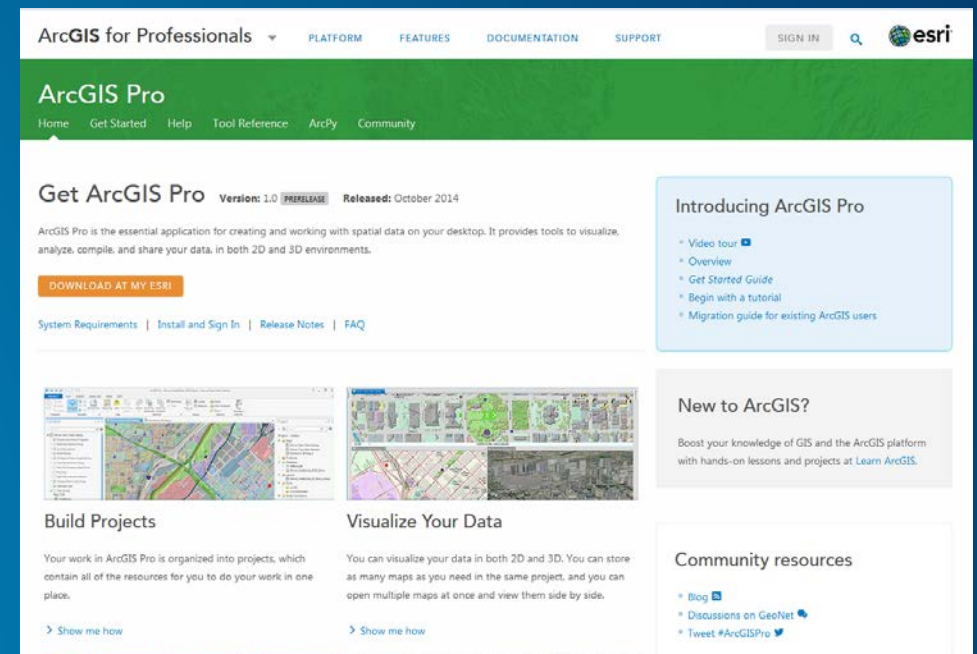
1. Primary Maintenance Administrator:

- Downloads from <http://My.Esri.com>

2. ArcGIS Online Administrator

- Provision licenses for Pro

**Additional Help for current Desktop:
Upgrading ArcGIS for Desktop 10.3**



The screenshot shows the ArcGIS Pro website landing page. At the top, there is a navigation bar with links for 'ArcGIS for Professionals', 'PLATFORM', 'FEATURES', 'DOCUMENTATION', and 'SUPPORT'. A search bar and 'SIGN IN' button are also present. Below the navigation bar, the page title 'ArcGIS Pro' is displayed, followed by a sub-navigation menu with links for 'Home', 'Get Started', 'Help', 'Tool Reference', 'ArcPy', and 'Community'. The main content area features a 'Get ArcGIS Pro' section with a 'Version: 1.0 PRE-RELEASE' badge and a 'Released: October 2014' date. A description of ArcGIS Pro is provided, along with a 'DOWNLOAD AT MY ESRI' button and links for 'System Requirements', 'Install and Sign In', 'Release Notes', and 'FAQ'. To the right, there is a 'Introducing ArcGIS Pro' section with links for 'Video tour', 'Overview', 'Get Started Guide', 'Begin with a tutorial', and 'Migration guide for existing ArcGIS users'. Below this, a 'New to ArcGIS?' section offers resources for learning ArcGIS. The bottom section is divided into two columns: 'Build Projects' and 'Visualize Your Data', each with a brief description and a 'Show me how' link. A 'Community resources' section at the bottom right includes links for 'Blog', 'Discussions on GeoNet', and 'Tweet #ArcGISPro'.

ArcGIS Pro licensing

- **Access by Named User**
 - ArcGIS Desktop Entitlement Subscription
 - ArcGIS Online Organization or Portal for ArcGIS for Server
- **Organization/Portal 'Administrator' can:**
 - Grant Pro access by Named User
 - Control product level and extension
 - Re-assign access as needed
- **ArcGIS Pro User can:**
 - Sign-in at startup
 - Go offline if needed

The screenshot shows a web browser window with the URL `http://energy.mapsdevext.arcgi...` and a tab titled 'Energy'. The page header includes navigation links: HOME, GALLERY, MAP, GROUPS, MY CONTENT, and MY ORGANIZATION. The main heading is 'Managing ArcGIS Pro Licenses for Energy' with the GIS Inc. logo.

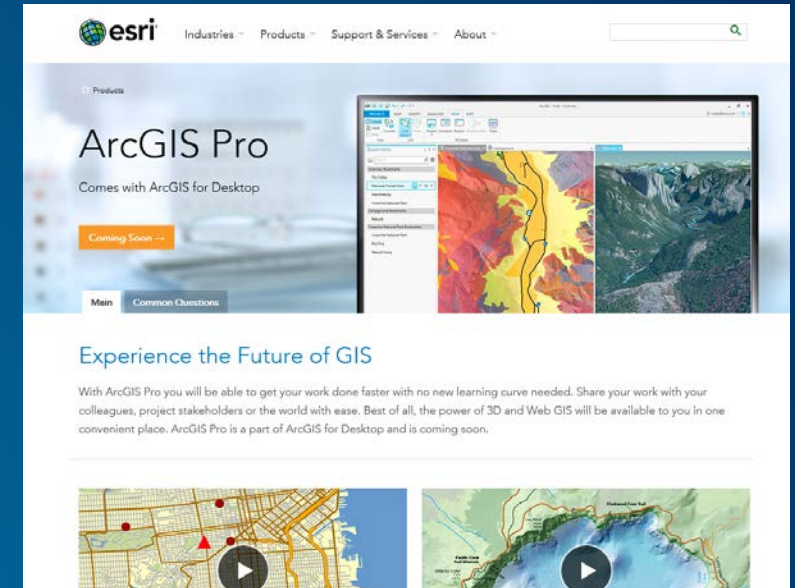
The 'MY ORGANIZATION' section displays a table of license counts for various products:

Product	ArcGIS Pro Basic	ArcGIS Pro Standard	ArcGIS Pro Advanced	Spatial Analyst	3D Analyst	Network Analyst	Geostatistical Analyst
Licenses	50	50	50	100	100	100	100
Available	49	48	43	91	93	91	93

Below the table, there is a 'Members' section with a 'SELECT ALL' button and a search box labeled 'Search by Name'. A note says 'Click to select a member.' Below this is a table with columns: Name, Username, Licensed for, and Last Used ArcGIS Pro.

Resources

- **ArcGIS Pro – Technology website**
 - <http://pro.arcgis.com/en/pro-app>
- **Getting Started**
 - <http://pro.arcgis.com/en/pro-app/get-started/overview-of-arcgis-pro.htm>
- **Product Site**
 - <http://www.esri.com/software/arcgis-pro>
- **What's Coming in ArcGIS**
 - <http://www.esri.com/software/arcgis/whats-coming>
- **Twitter**
 - @ArcGISPro



Learning more

- **See us in the booth!**
- **Back at work:**
 - **Pro Pre-release access**
 - **GeoNet and Tech Support**
- **When Released**
 - **Web Course: Getting Started with ArcGIS Pro**
 - **Instructor Lead Course - Using ArcGIS Pro for GIS Workflows**



Understanding our world.