



ArcGIS for State and Local Government: An Overview

Nakul Bhatia and Crystal Dorn

Esri Pacific User Conference

October 13 – 14, 2014 | Sacramento

Agenda

- **Overview of the configurable maps and apps for government organizations:**
 - State government
 - Local government
- **What's included?**
- **How to get started**
- **Resources**



Deploy the
complete platform

Create a destination
with Portal

Configure first,
customize second

Create **useful**
information products

Light up everyone
in the organization

ArcGIS as a Platform

Simple, Open, and Configurable

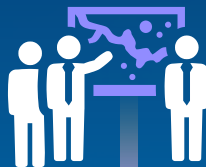
Knowledge Workers



Executive Access



Public Engagement



Work Anywhere



Enterprise Integration



Professional GIS



ArcGIS

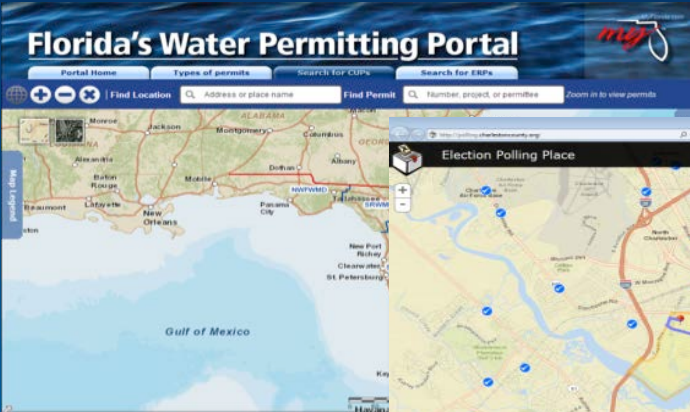
Web GIS

Making Mapping and GIS Available Across Your Organization

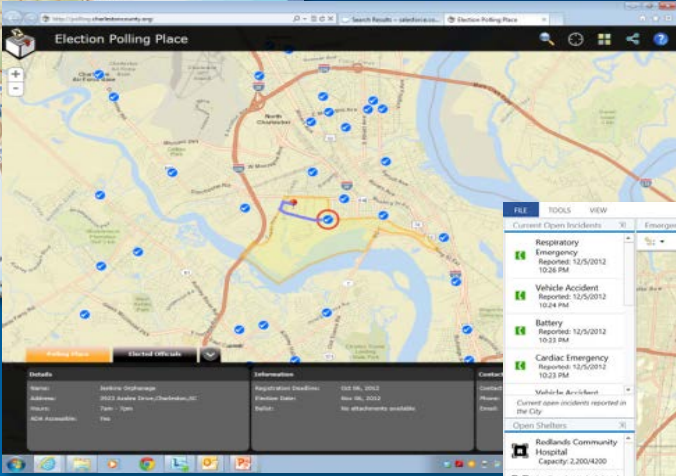
Common Challenges for Government Organizations



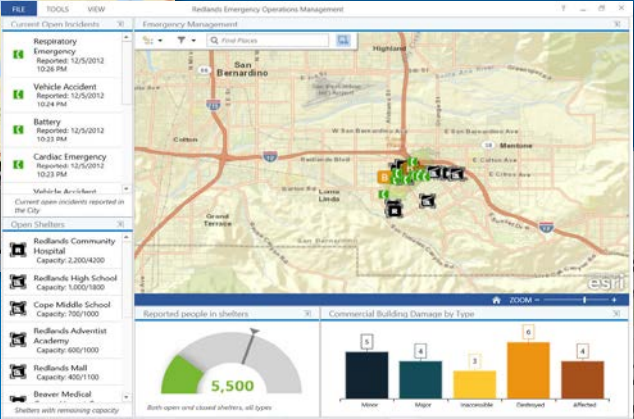
A Common Experience....



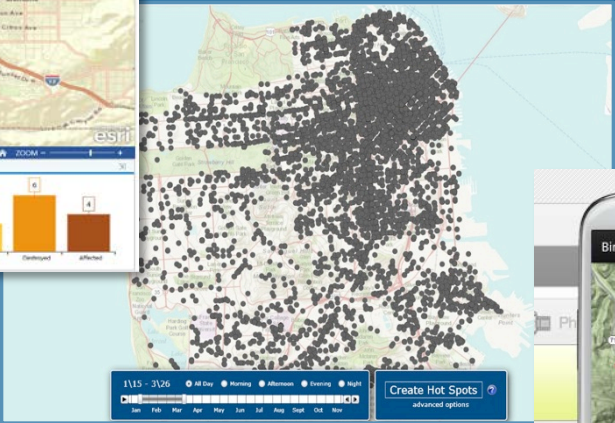
Display



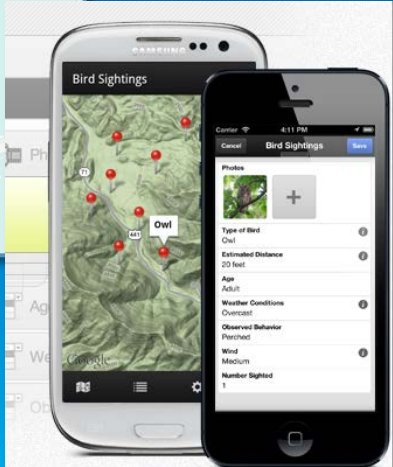
Find



Compare



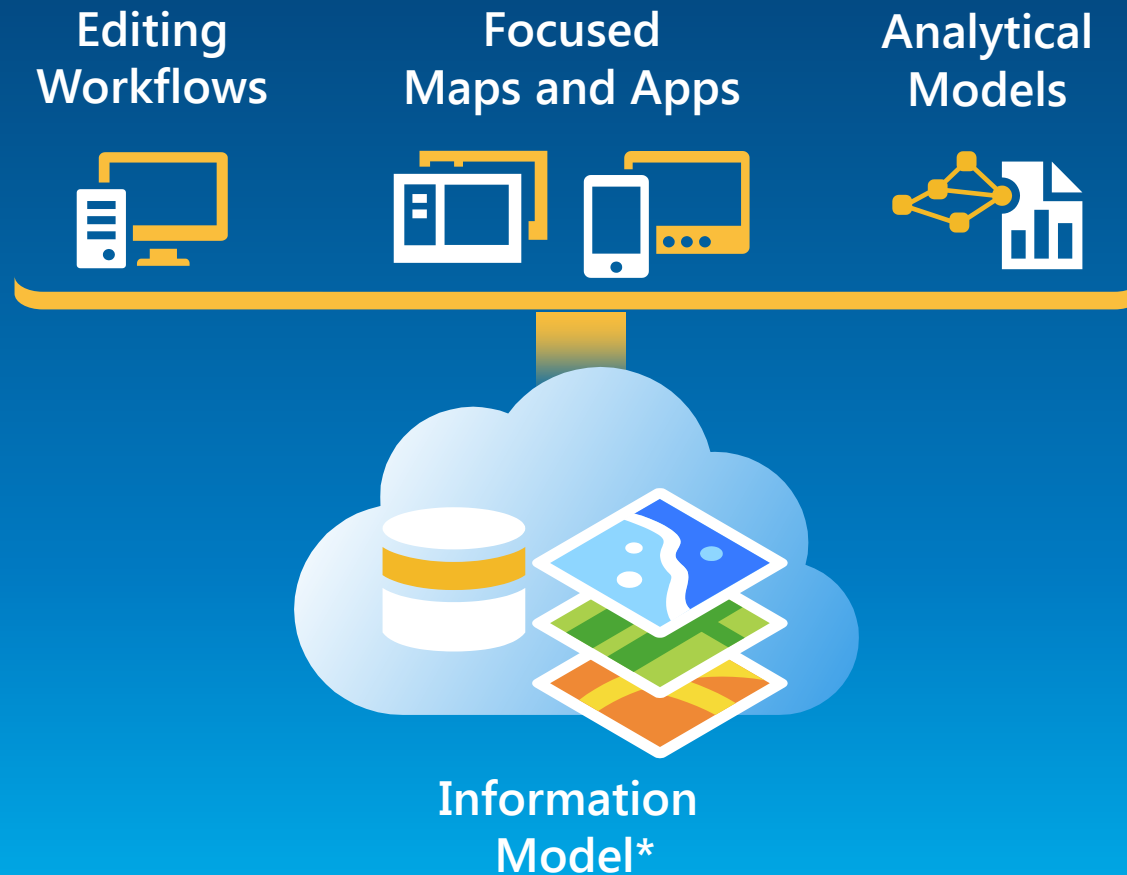
Analyze



Collect

ArcGIS for Local Government

ArcGIS for State Government



**ArcGIS for Local Government*

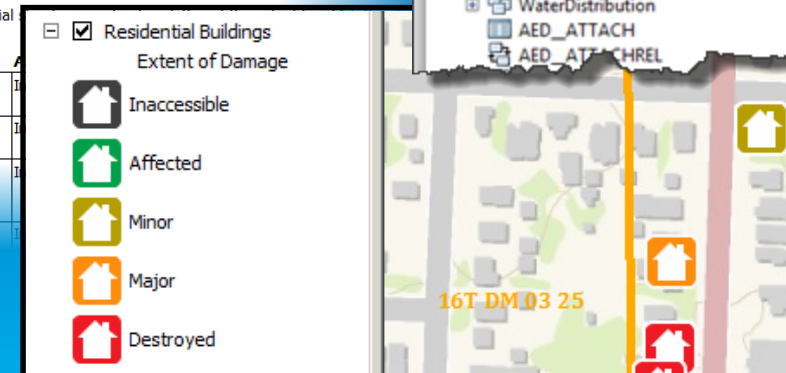
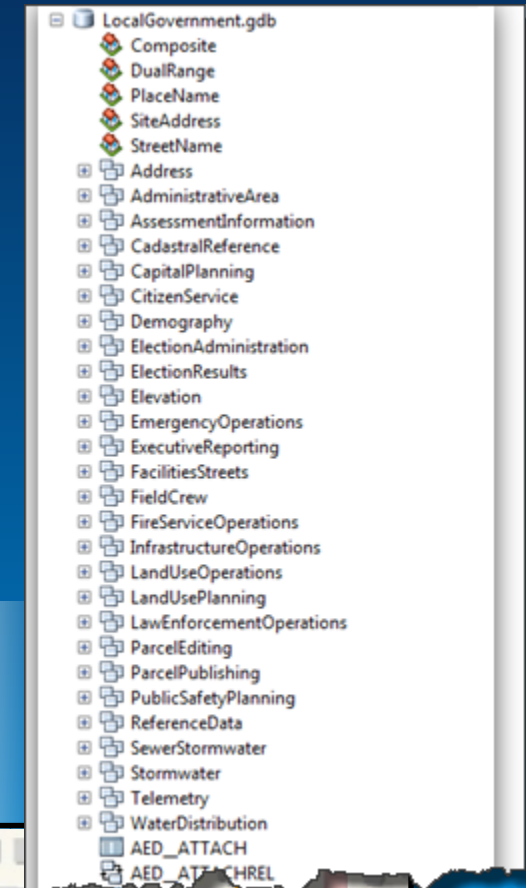
Local Government Information Model

- Supports Local Government maps and apps
 - Includes sample data, City of Naperville
- Central repository, organized around thematic content
 - Optional
 - Configurable
 - Fully documented

DamageResBuilding - FeatureClass

Name DamageResBuilding
ShapeType Point
FeatureType Simple
AliasName Damage to Residential Buildings
HasM false
HasZ false
HasAttachments true
Description The location of damaged residential

Field	Data Type	Length
INCIDENTID	String	30
INCIDENTNM	String	255
INSPECTID	String	10
INSPECTOR	String	50



Demo: A common challenge

ArcGIS for Local Government

Planning



- Park and Recreation Finder
- Land Use Public Comment
- Land Use Public Notification
- Community Planning
- Code Violation

Land Records



- Tax Parcel Editing
- Deed Drafter
- Tax Parcel Map Book
- Address Data Management
- Parcel Value for iPhone
- Tax Parcel Viewer
- Value Dashboard
- Tax Reverted Property
- Data Reviewer for Parcels
- Data Reviewer for Addresses

Water Utilities

Many more...

Public Safety



Flood Planning	Cell Phone Analysis
Special Event Planning	Incident Mapping
Fire Station Wall Map	Field Interview Card
Fire Run Book	Public Safety COP
Pre-Incident Planning	Damage Assessment
AED Inventory	My Hazard Information
Home Safety Inspection	EM Maps
Target Hazard Analysis	
Fire Hydrant Inspection	

Public Works



Campus Editing	Road Network Management
Campus Place Finder	Road Closures
Citizen Service Request	Plans and Drawings
Public Information Center	Maintenance Agreements
SnowCOP	Sidewalk Inventory
My Government Services	Bridge Inventory
Water Utility Network Editing	Sign Inventory
Water Utility Capital Planning	Signal Inventory
Water Utility Mobile Map	Streetlight Inventory
	Public Parking

Elections



- Election Results
- Election Polling Places

Local Government



- Information Model
- Basemaps
- Data Reviewer for Basemaps
- Executive Dashboard
- Briefing Book
- Community Parcels
- Maps and Apps Gallery
- [Model Organization](#)

ArcGIS for State Government

DOT



Traveler Information System (511)
Railroad Crossing Inspection
Crash Analysis Tools*
NEPA (Environmental Review)*

Public Health



Beach Monitoring
Water Quality Monitoring
Restaurant Inspection
Restaurant Inspection Status
Birth Outcomes
Birth Outcomes Briefing Book
Model Organization
Assisted Living Facility Inspection*

Fish and Wildlife



Water Access Locator
Wildlife Management Area Locator
Hunting License Locator
Environmental Impact Assessment*

Emergency Management



Flood Planning
Special Event Planning
Pre-Incident Planning
Target Hazard Analysis
Common Operational Picture
Damage Assessment
My Hazard Information
EM Maps
Model Organization
Impact Map
Public Information Map
Incident Briefing Plan

Environment



Permit Inspection
Permit Status (Hosted)*
Environmental Impact Assessment*
Permit Processing Dashboard
Park and Recreation Locator
Permit Expiration Dashboard
Permit Status
Trail Locator
Model Organization

Economic Development



Live, Work, and Locate
Incentive Zones/Districts App
Trip Planner*
Site Selector*

GIS/IT

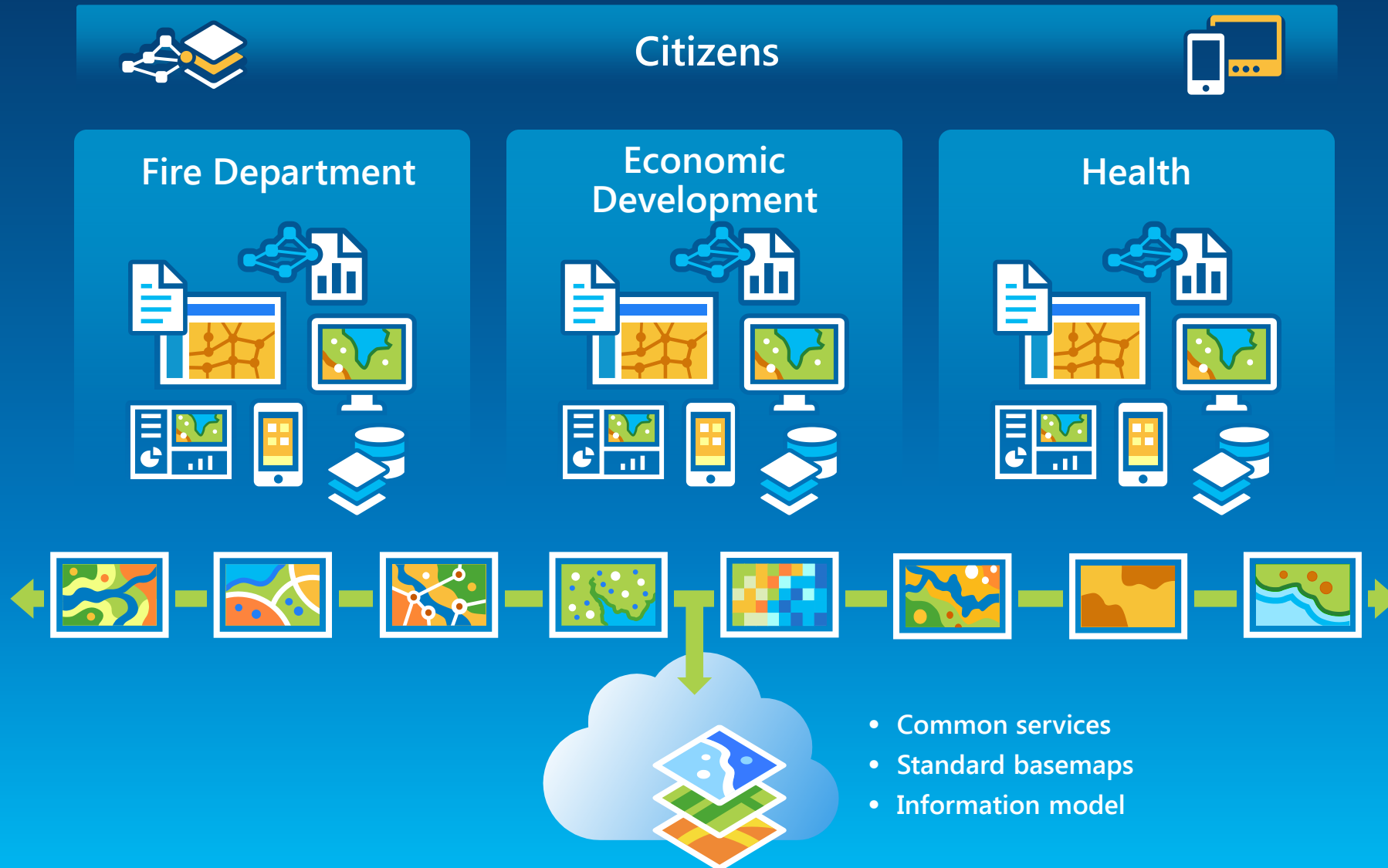


Executive Dashboard
Model Organization(s)
New Locator Apps*
Data Aggregation Patterns
Community Parcels
Addressing *

Demo: Explore the Solutions

A System View

Deploying the Government solutions



- Embedded maps
- Mobile apps
- Web apps
- Open data

- Functional groups
- Editing maps
- Services
- Mobile apps
- Web apps
- Dashboards

- Common services
- Standard basemaps
- Information model

Configuration Patterns

How do I get started?

1. **Choose the maps/apps that meet identified business needs**
2. **Organize your data for use with those maps/apps**
3. **Configure the specific template(s)**
4. **Deploy and Share (e.g. for public access; to your Organization)**

Organizing your data

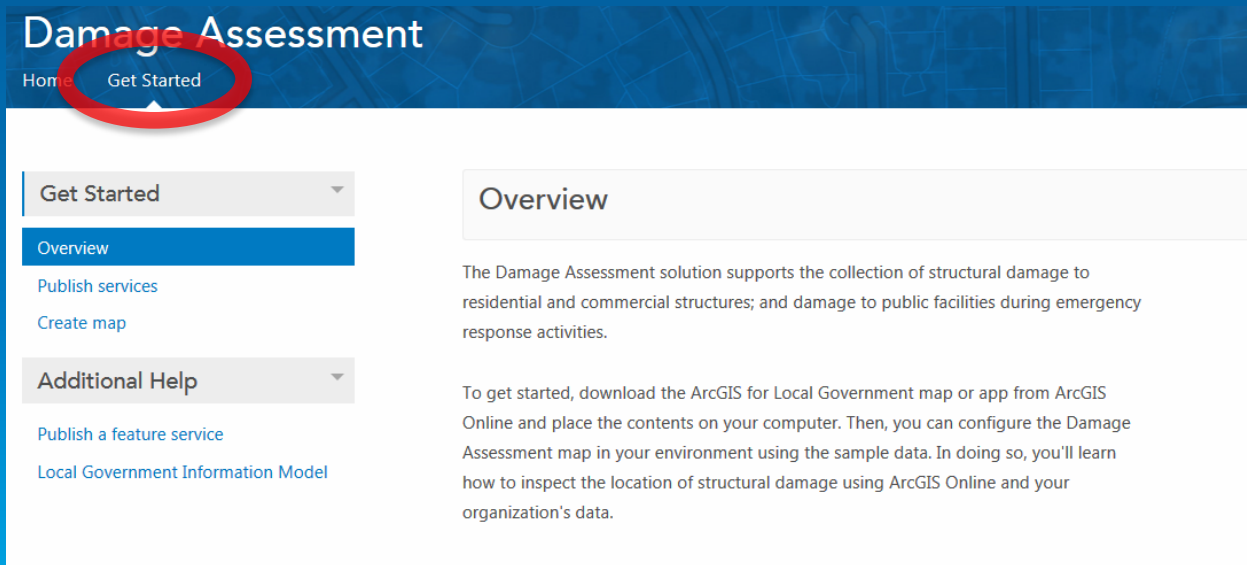
- **Use the Local Government Information Model**
 - Complete adoption
 - Portions that you need for the maps & apps that meet your needs
- **Do not use the Local Government Information Model**
 - Configure the maps and app templates to work with your data

Data translation tools

- **ArcGIS GeoProcessing tools and workflows**
 - Append, Load, ...
- **X-Ray AddIn for ArcCatalog and ArcMap**
- **FME for ArcGIS**
- **Gizinta Tools**
- **ArcGIS Solutions Schema Migration Wizard**

Publishing web services

- ArcGIS for Server
- ArcGIS Online
- Both



Damage Assessment

Home **Get Started**

Get Started

Overview

Publish services

Create map

Additional Help

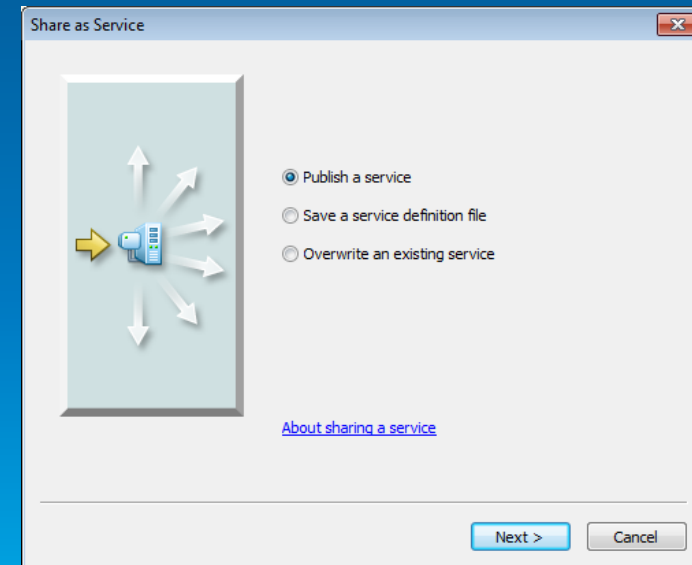
Publish a feature service

Local Government Information Model

Overview

The Damage Assessment solution supports the collection of structural damage to residential and commercial structures; and damage to public facilities during emergency response activities.

To get started, download the ArcGIS for Local Government map or app from ArcGIS Online and place the contents on your computer. Then, you can configure the Damage Assessment map in your environment using the sample data. In doing so, you'll learn how to inspect the location of structural damage using ArcGIS Online and your organization's data.



Share as Service

Publish a service

Save a service definition file

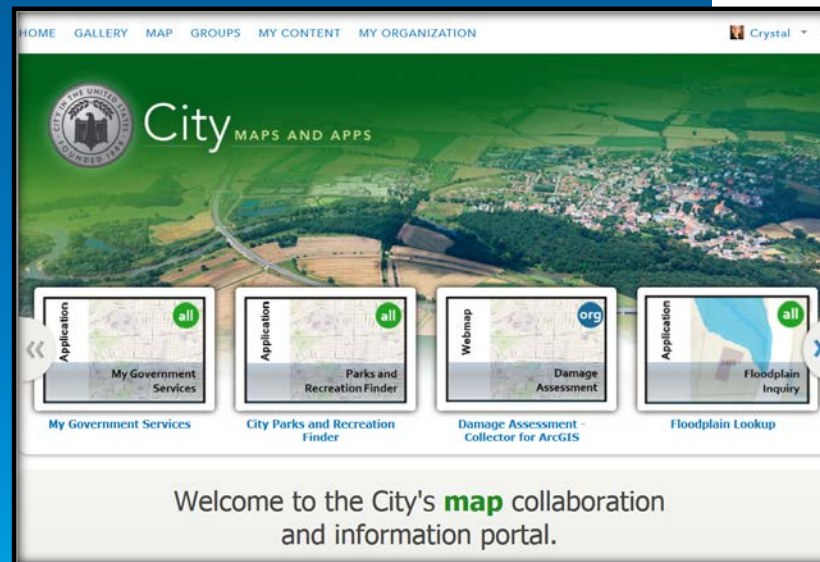
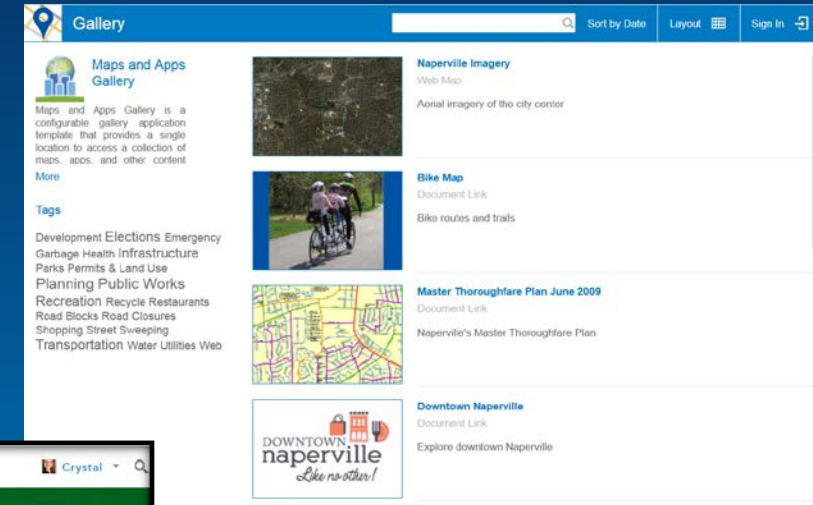
Overwrite an existing service

[About sharing a service](#)

Next > Cancel

Deploying and Sharing

- Deploying
 - On-premises
 - ArcGIS Online hosting (apps)
- Sharing
 - Organization
 - Galleries
 - Templates, Group
 - Links/Embed



Demo: Configuration

Resources

Links and Documentation

- <http://solutions.arcgis.com>
- <http://tryitlive.arcgis.com/>
- **Documentation:**
 - [Local Government Online Help](#)
- **Blogs:**
 - [Local Government](#)
 - [State Government](#)
- **GeoNet:**
 - [Local Government](#)
 - [State Government](#)

The screenshot shows the ArcGIS for Local Government 10.2 Resource Center. The page title is "ArcGIS for Local Government 10.2" and the subtitle is "Resource Center". In the top right corner, there are links for "FEEDBACK | PRINT | EMAIL". The main content area is titled "Welcome to ArcGIS for Local Government online help" and includes a navigation bar with left and right arrows. Below the title, there is a paragraph of introductory text. The page is organized into several sections: "Popular topics" with links for "What is ArcGIS for Local Government?", "How do I get started?", and "What's new?"; "Focused maps and apps" with links for "Addresses", "Basemaps", "Elections", "Land records", "Planning and development", "Public safety", "Public works", and "Water utilities"; and "Related resources" with links for "ArcGIS for Local Government community", "Blog", "Forum", "Videos", and "Esri Support Services". On the left side, there is a table of contents with a tree view structure listing various topics and toolsets.

ArcGIS for Local Government 10.2 FEEDBACK | PRINT | EMAIL

Resource Center

Welcome to ArcGIS for Local Government online help

This is the place to find help for ArcGIS for Local Government. Use the links below to learn more about the maps and apps, see popular topics, and access related resources. You can also find specific information by browsing the help topics in the table of contents on the left or by using search.

Popular topics

- [What is ArcGIS for Local Government?](#)
- [How do I get started?](#)
- [What's new?](#)

Focused maps and apps

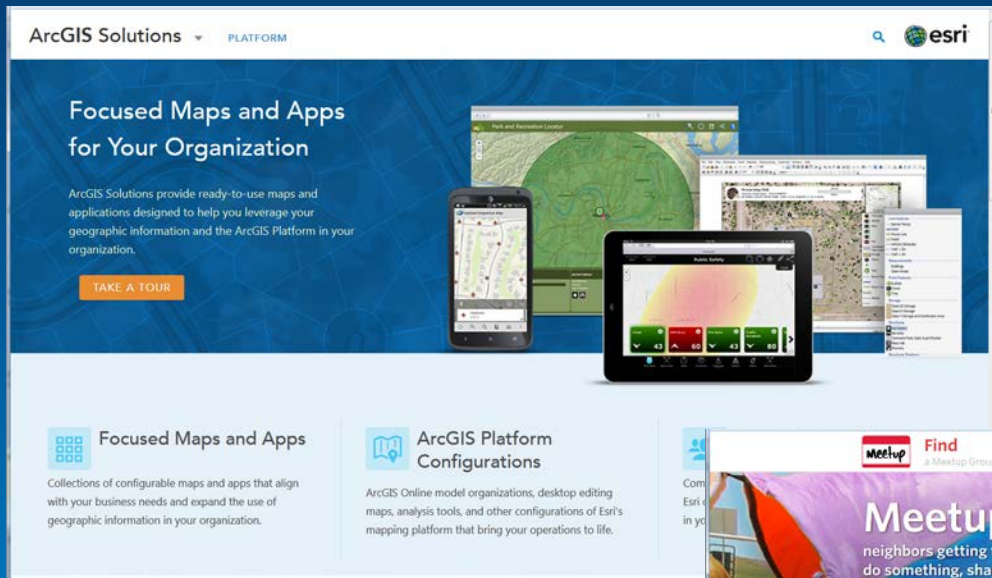
- [Addresses](#)
- [Basemaps](#)
- [Elections](#)
- [Land records](#)
- [Planning and development](#)
- [Public safety](#)
- [Public works](#)
- [Water utilities](#)

Related resources

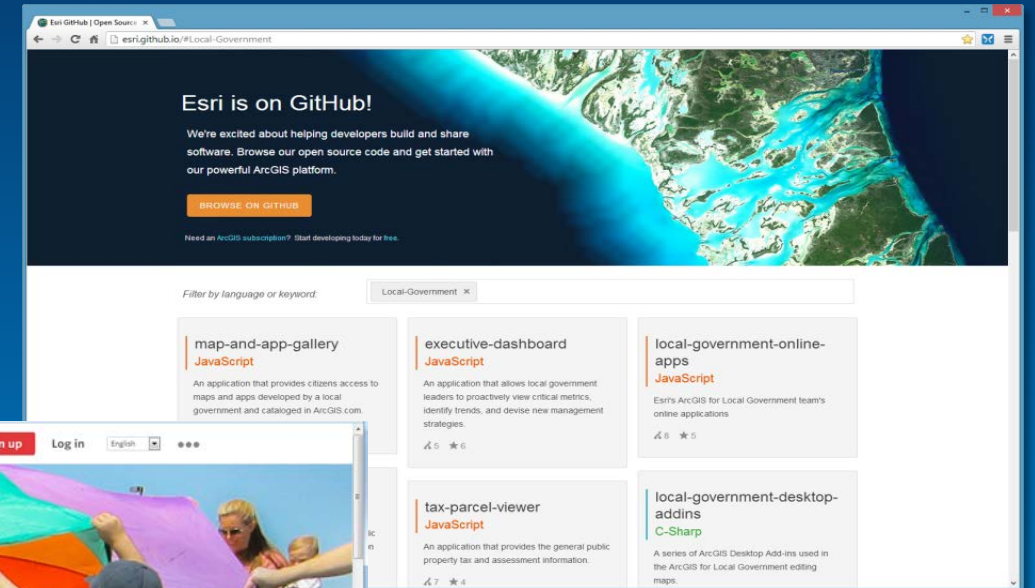
- [ArcGIS for Local Government community](#)
- [Blog](#)
- [Forum](#)
- [Videos](#)
- [Esri Support Services](#)

Copyright © 1995-2014 Esri. All rights reserved. 2/25/2014

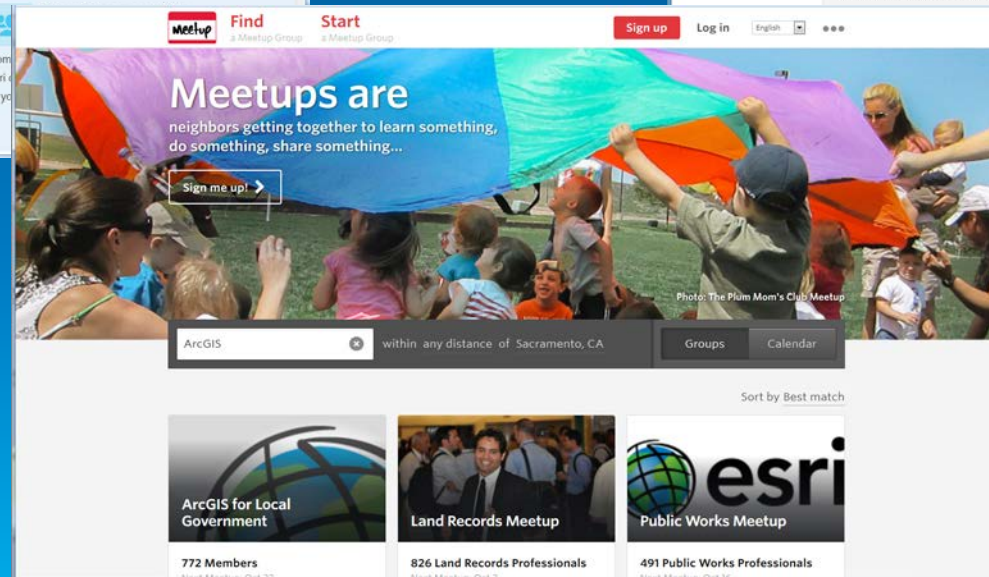
The Community



Destination where governments can collaborate



Place where developers can contribute, too



Ongoing dialog to share success stories and learn from others

Additional Help

- **Esri Professional Services**
 - Launch Kits, Rent-a-tech, ...
- **Esri Partner Program**



Esri Professional Services

- Overview
- Rent-a-Tech Services
- Industry Practices
 - Business/Commercial
 - Defense
 - Environmental Management
 - Facilities Management
 - Geodesign
 - Government**
 - Health and Human Services
 - Land Administration and Cadastre
 - Map, Chart, and Data Production
 - Natural Resources

Government

Esri Professional Services can help you leverage the technology you already have and add key commercial off-the-shelf (COTS) technology as necessary.

Evolving your GIS to a COTS-based system

Many older government systems are highly customized, making support and updates difficult and expensive. Esri can help you migrate to a COTS-based system to allow you to benefit from standard support, evolve the system as the underlying technology evolves, and insert new technology more readily.

Enterprise data management

We can help you modernize how you manage spatial data, eliminating silos focused on a specific product or mission to reorient around the needs of end users. This significantly reduces duplication of effort, improves data quality, and allows you to produce more and serve more customers with the same finite resources. [Learn more.](#)

Summary

- **Identify the business needs of your organization**
- **Select a configuration pattern that makes sense for your organization**
- **Customize only if necessary**
- **Leverage ArcGIS Online web application templates**
- **Participate in the community**
- **Don't hesitate to ask for help from**
 - **Esri, Peers, Partners**

Questions?

Thank you!



Understanding our world.