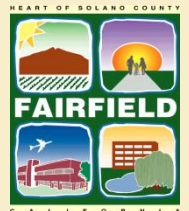


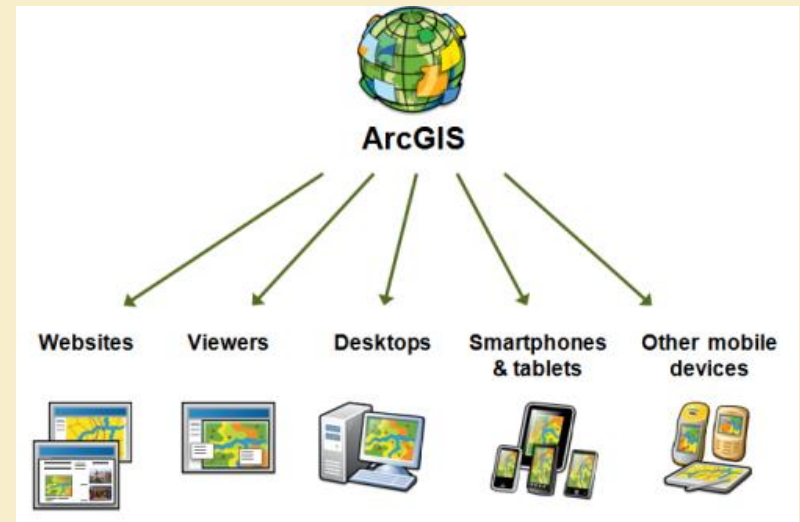
# Asset Based Data Management for the Non-GIS Professional using ArcGIS Online

Jasmin Acuna, Shashi Ganjam  
City of Fairfield, CA  
ESRI Pacific User Conference  
October 14, 2014



# Overview

- Background
- Asset Management
- ArcGIS Online
- Future Steps
- Questions?

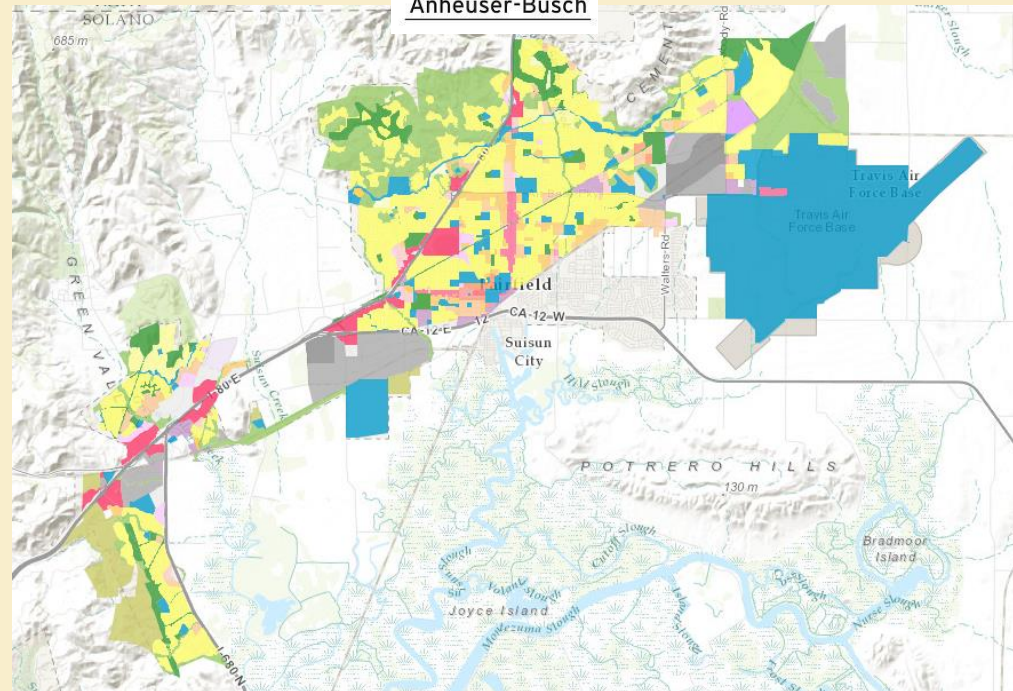


# Background

- Midway along I-80 between San Francisco & Sacramento



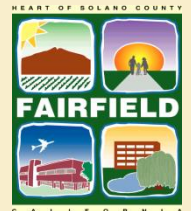
- GIS:
  - IT Division
  - GIS Analyst
  - Developer
  - Sr. IT Analyst
- ELA since 2013



# Asset Management

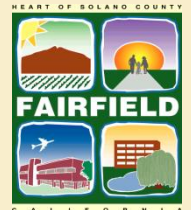
## Primary Objective:

- Support the continuous improvement of city infrastructure assets via GIS
  - What is out there
  - Age of infrastructure
  - Manufacturer
  - Last visit
  - Accuracy



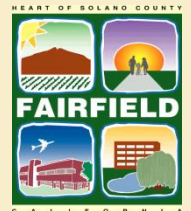
## Assets in the City

- Street Lights: 9390 lights
- Sewer:
  - 4,695 Manholes
- Water:
  - 373 miles of lines; 11,099 valve points; 3,191 Fire Hydrants
- ADA Ramps: 4,680 points
- Signs: 13,058 signs



# Asset Management via Maps

- What are you trying to convey?
- Who is your audience?
  - City Manager
  - Council
  - Management
  - Engineers
  - Field Workers
  - Public
- Create an map for each group?



Certain groups have access to certain data

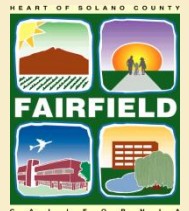
-Internal Data/Maps

– Restrict editing privileges

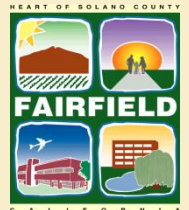
-Public Maps

Before ArcGIS Online:

*No public interactive online maps*



- Revisit Primary Objective
- ArcGIS Online works!
  - Easy to publish
  - Multiple layers = not a lot of credits
  - Easy to pull the data back, compare it against the geodatabase, import edits
  - Access data from anywhere
  - Secure data for specific users
  - Simplified editing powers to designated users stewards relevant data





# ArcGIS Online

City of  
**FAIRFIELD**  
California



## Fairfield Maps

City of Fairfield  
Mapping & Analysis Platform



City of Fairfield Measure P Street Maintenance Team



City of Fairfield, CA Police Public Safety Areas Map

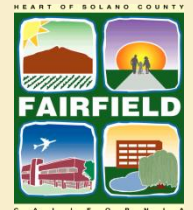
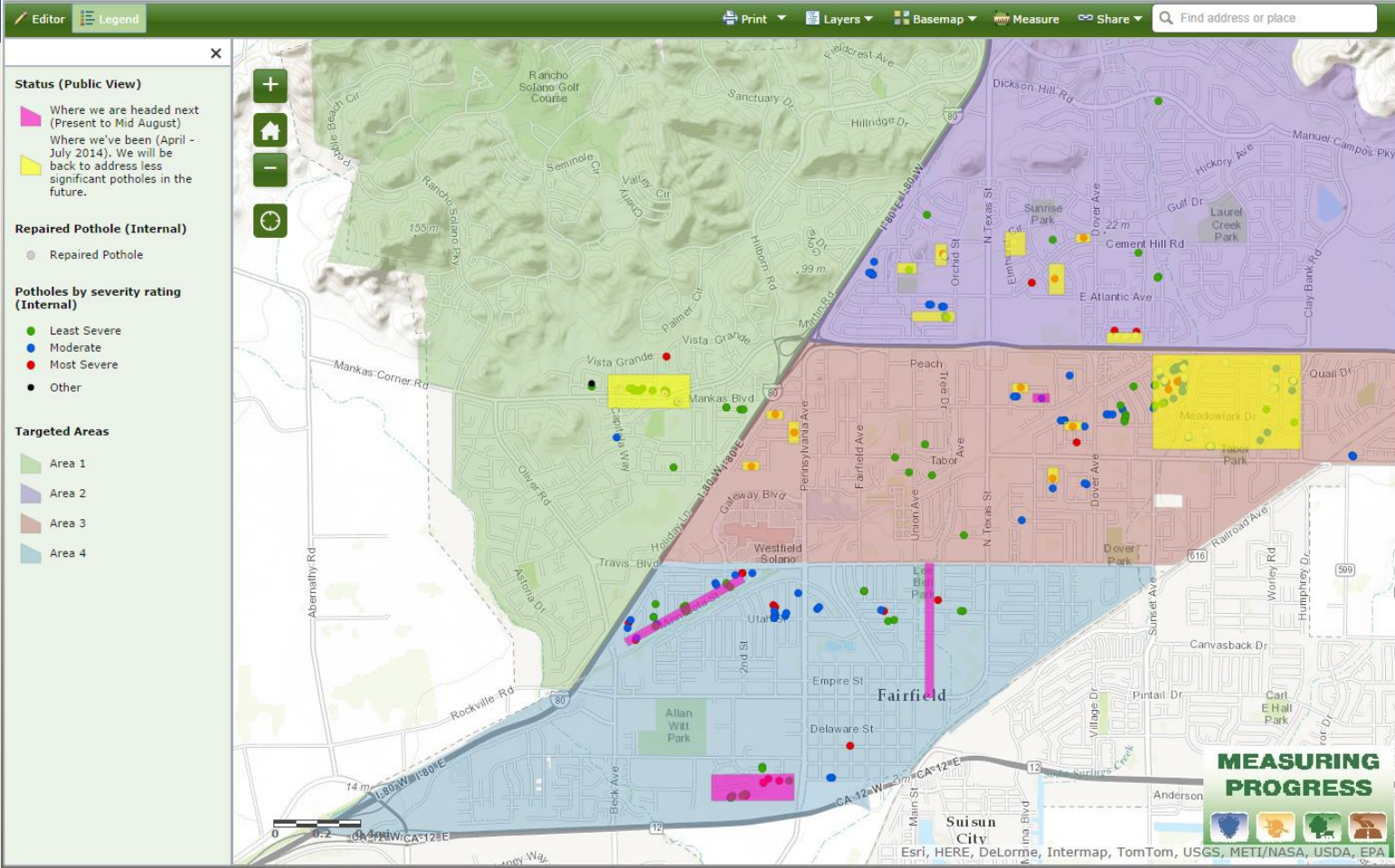


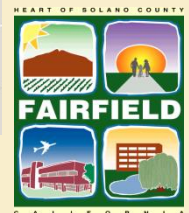
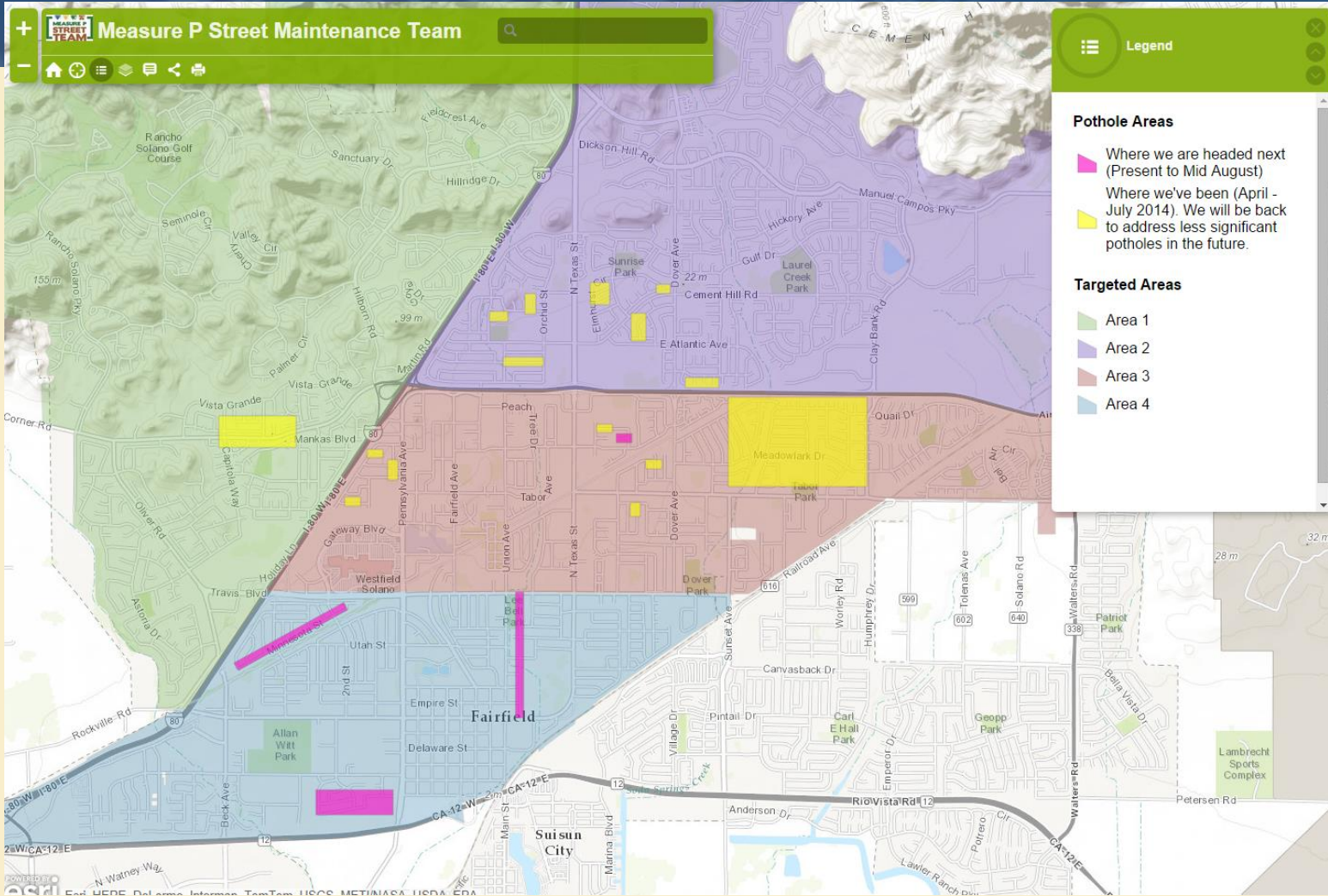
NSP and CalHome Program Boundaries



Zoning Designations

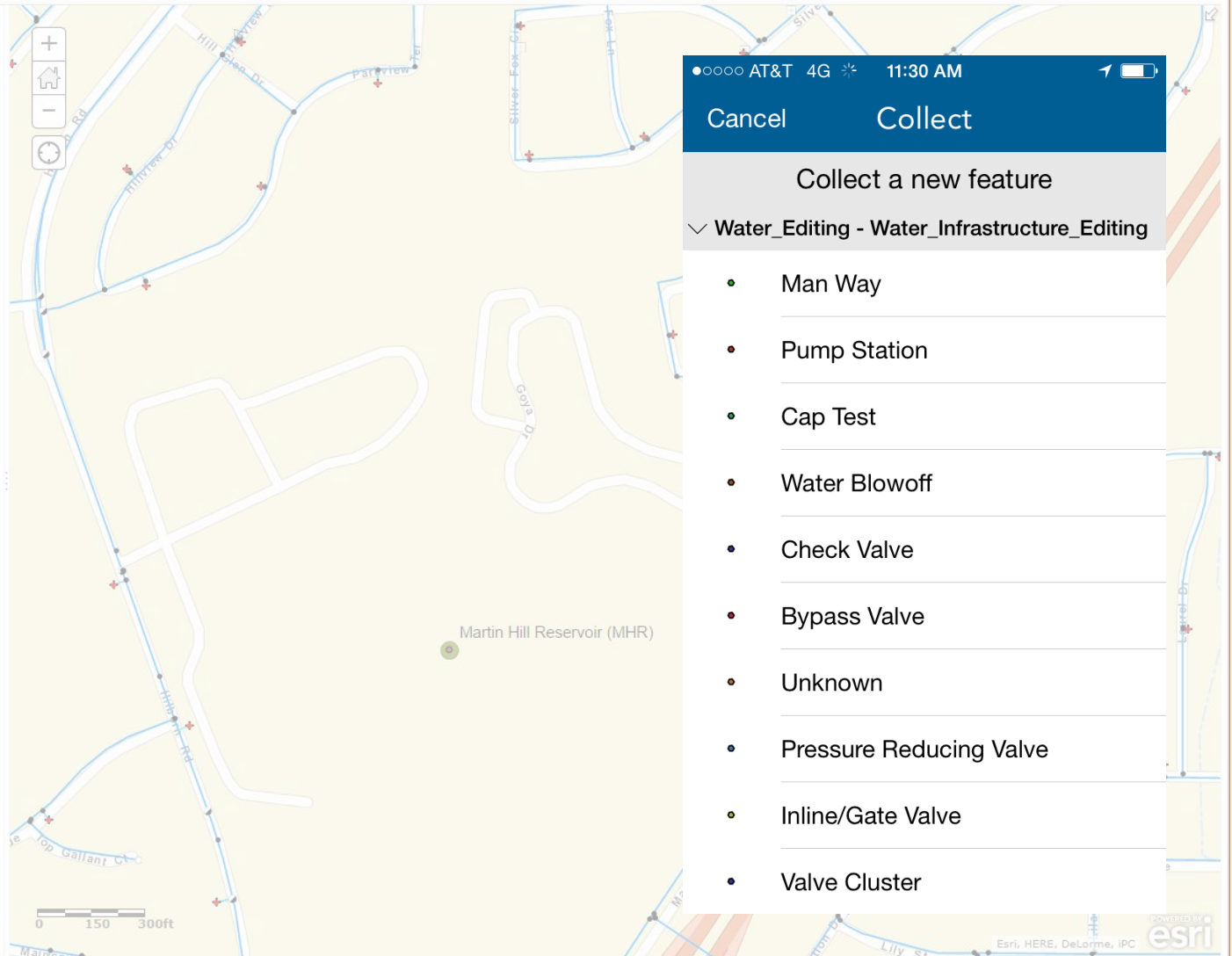
## Measure P Street Maintenance Team





Contents

- Water Editing - Water Infrastructure Editing
- Zone 1 ▾
- Zone 2 ▾
- Zone 3 ▾
- Zone 4 ▾
- Zone 5 ▾
- Water Valves ▾
- Water Distribution - Water Distribution Stations
- Water Distribution - Pump Station ▾
- Fire Hydrants ▾
- Water Valves (Other) ▾
- Fire Hydrant Runs ▾
- Non Potable Water ▾
- Water Main COF ▾
- Non COF Water Lines ▾
- Streets ▾



●○○○○ AT&T 4G 11:30 AM

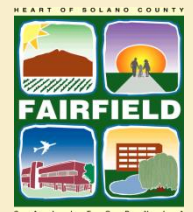
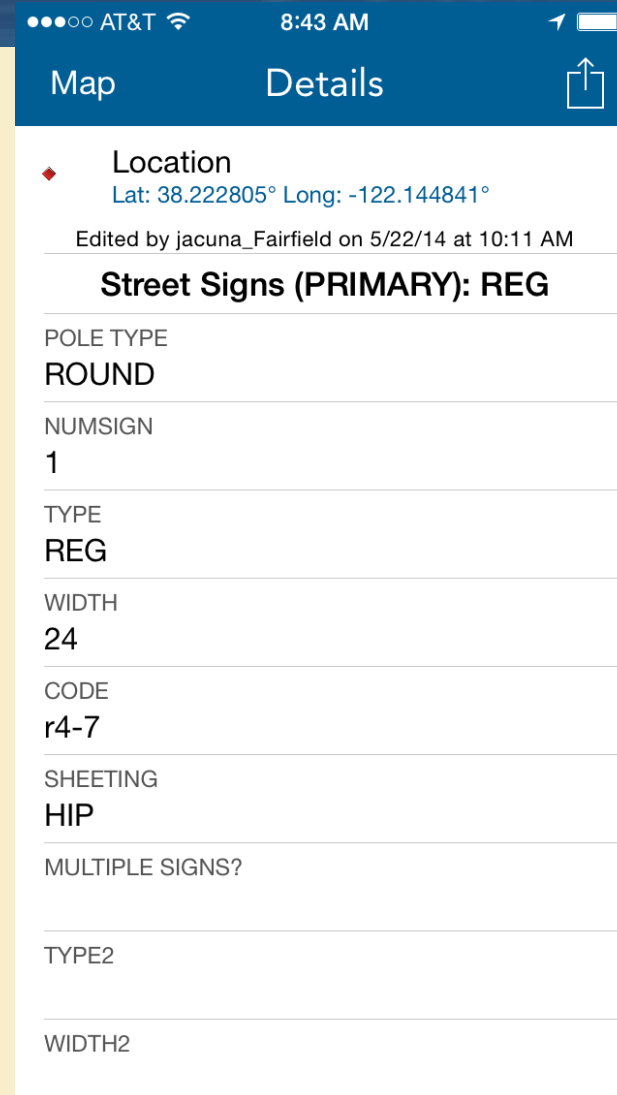
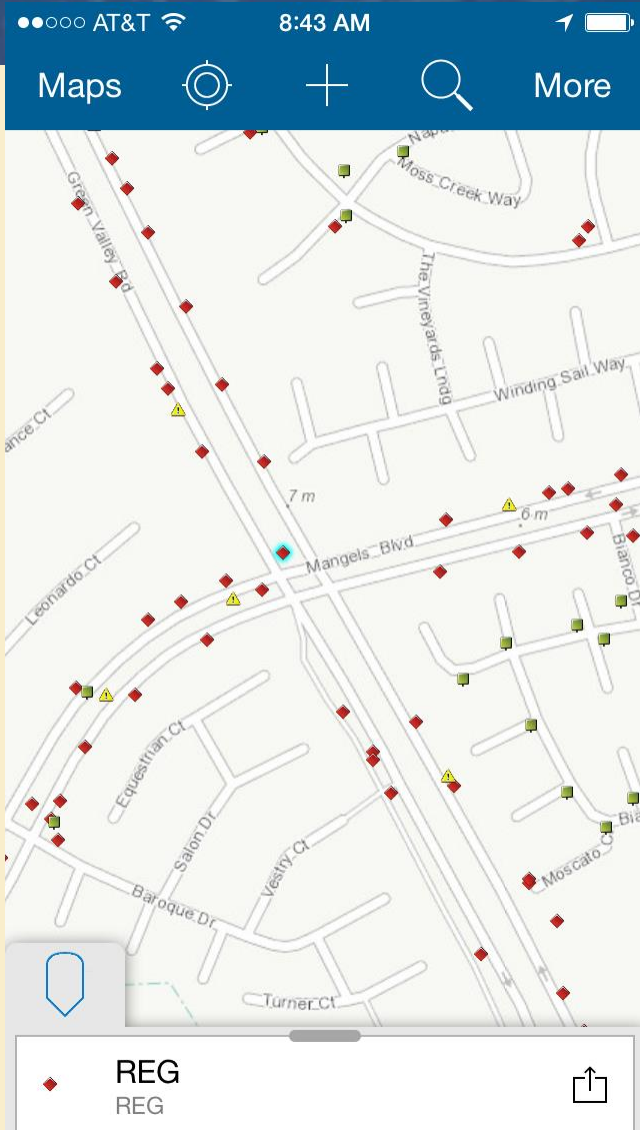
Cancel Collect

Collect a new feature

✓ Water\_Editing - Water\_Infrastructure\_Editing

- Man Way
- Pump Station
- Cap Test
- Water Blowoff
- Check Valve
- Bypass Valve
- Unknown
- Pressure Reducing Valve
- Inline/Gate Valve
- Valve Cluster

# Collector for ArcGIS

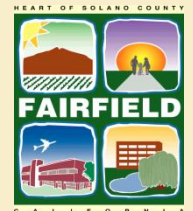
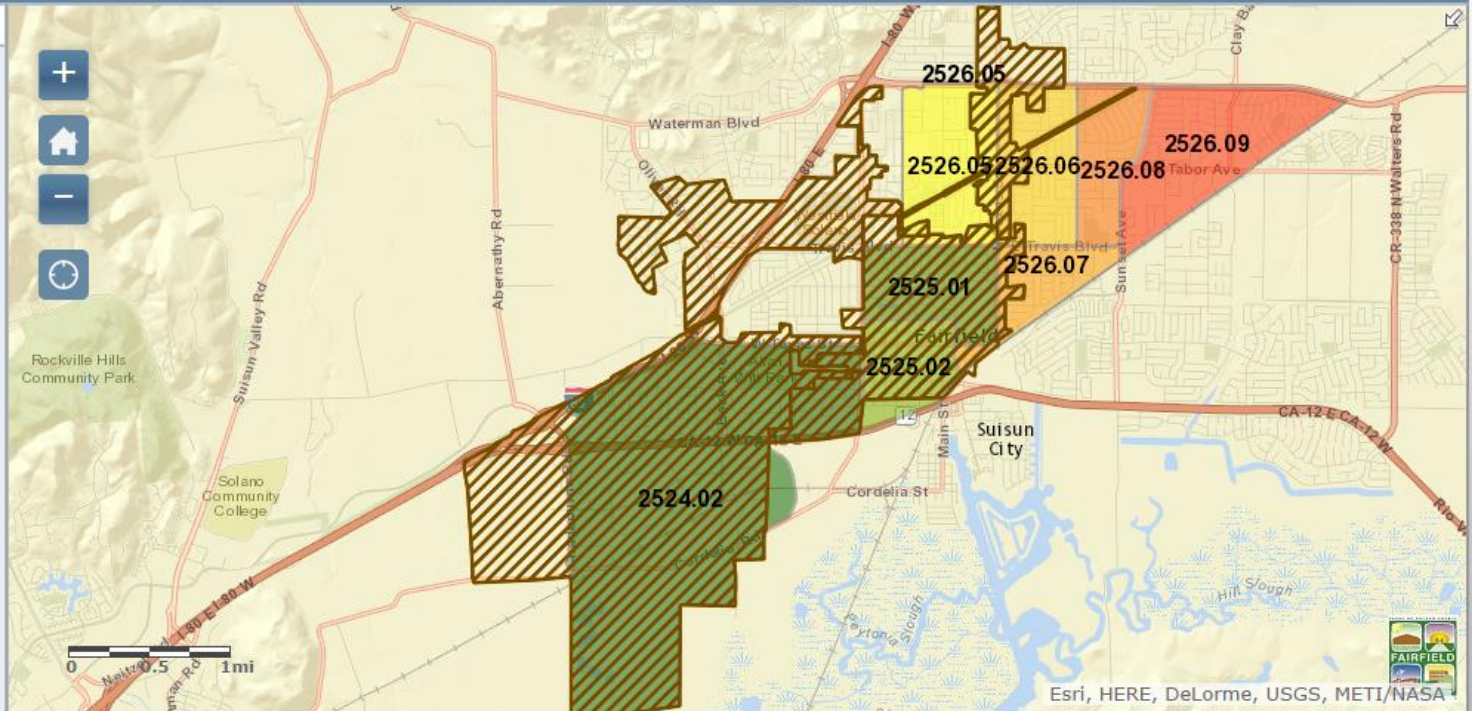


# NSP and CalHome Program Boundaries

Details Legend

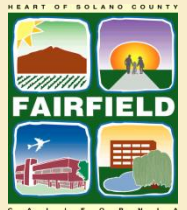
Print Layers Basemap Share Find address or place

- NSPandCalHome**
- Cal Home Program Boundary
  - NSP Eligible Census Tracts
- |         |
|---------|
| 2524.02 |
| 2525.01 |
| 2525.02 |
| 2526.05 |
| 2526.06 |
| 2526.07 |
| 2526.08 |
| 2526.09 |



# Future Steps

- Local Government Model
- Integration into with a separate asset management system



# Questions?

City of  
**FAIRFIELD**  
California

Thank You.

[jacuna@fairfield.ca.gov](mailto:jacuna@fairfield.ca.gov)

[sganjam@fairfield.ca.gov](mailto:sganjam@fairfield.ca.gov)

