

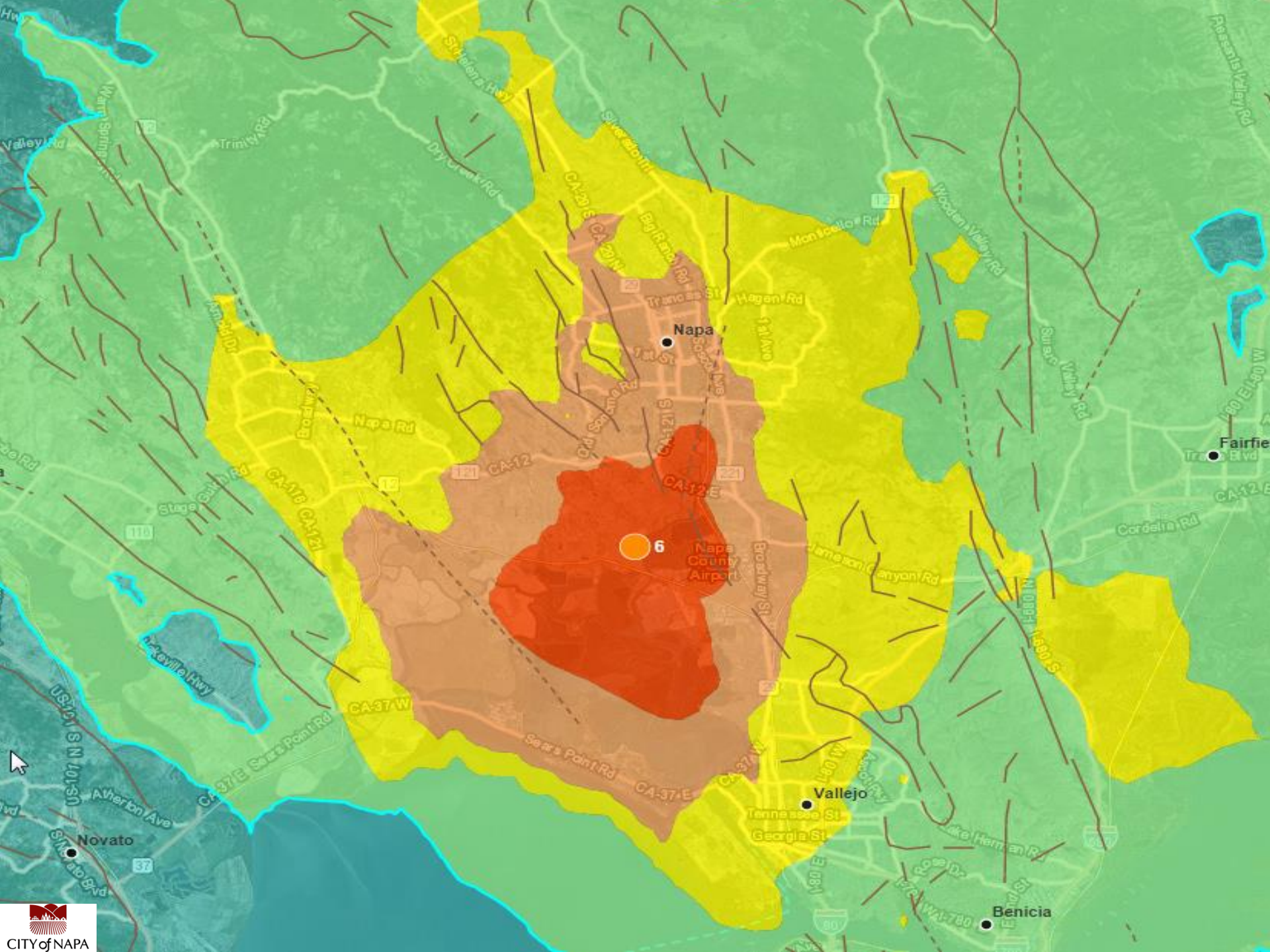
HAVE YOUR ARCGIS ONLINE TOOLKIT READY !

How ArcGIS Online was deployed
for the South Napa Earthquake

Katy Wallis – GIS
Coordinator, City of Napa
kwallis@cityofnapa.org



ESRI Pacific Users Conference
October 14, 2014







NOVELL
EST. 1948
BAIL BONDS

CRIME SCENE DO NOT CROSS

Brown and Third
Downtown Napa,
Aug 25, 2014





5

Camelion





POLICE LINE DO NOT CROSS

POLICE LINE DO NOT CROSS





2320

DANGER PELIGRO DANGER PELIGRO DANGER PELIGRO DANGER PELIGRO

Tenants and Guests:

Do not enter the premises until your landlord has given you permission to access your space.

Thank you,
Zapolski Real Estate

UNSAFE

DO NOT ENTER OR OCCUPY
(THIS PLACARD IS NOT A DEMOLITION ORDER)

This structure has been inspected, found to be structurally damaged and is unsafe to occupy, as described below.

222 E. 1st St. 2nd Floor

Date *2/2/15*

Time *2:45*

This facility was inspected under emergency conditions for

John Zapolski

Inspector ID/Agency

John Zapolski

Do not enter, except as specifically authorized in writing by jurisdiction. Entry may result in death or injury.

Facility Name and Address

222 E. 1st St. 2nd Floor

222 E. 1st St. 2nd Floor

Do Not Remove, Alter, or Cover This Placard
until Authorized by Governing Authority

AMERICAN

RESTRICTED USE

Caution: This structure has been inspected and found to be damaged as described below:

Vertical separation of parapet at top

Entry, occupancy, and lawful use are restricted as indicated below:

Access has been withheld until further notice

Facility Name and Address:

2nd Street Ave

Date 2/26/18

Time 6:45

(Caution: Aftershocks since inspection may increase damage and risk.)

This facility was inspected under emergency conditions for

City of Denver
(jurisdiction)

Inspector ID / Agency

73417 FAC 123

Do Not Remove, Alter, or Cover this Placard until Authorized by Governing Authority





NOVELL
224-1142
BAIL BONDS
1992800 402-542-1820



**EARTHQUAKE
DEBRIS
ONLY**

**RESIDUOS
DE TERREMOTO
SOLAMENTE**







GET ROLLING AFTER

HOT TOPICS MURDERER'S PAROLE REVERSED • GRAPE HARVEST • TECH AND THE QUAKE • COUNCIL CANDIDATE

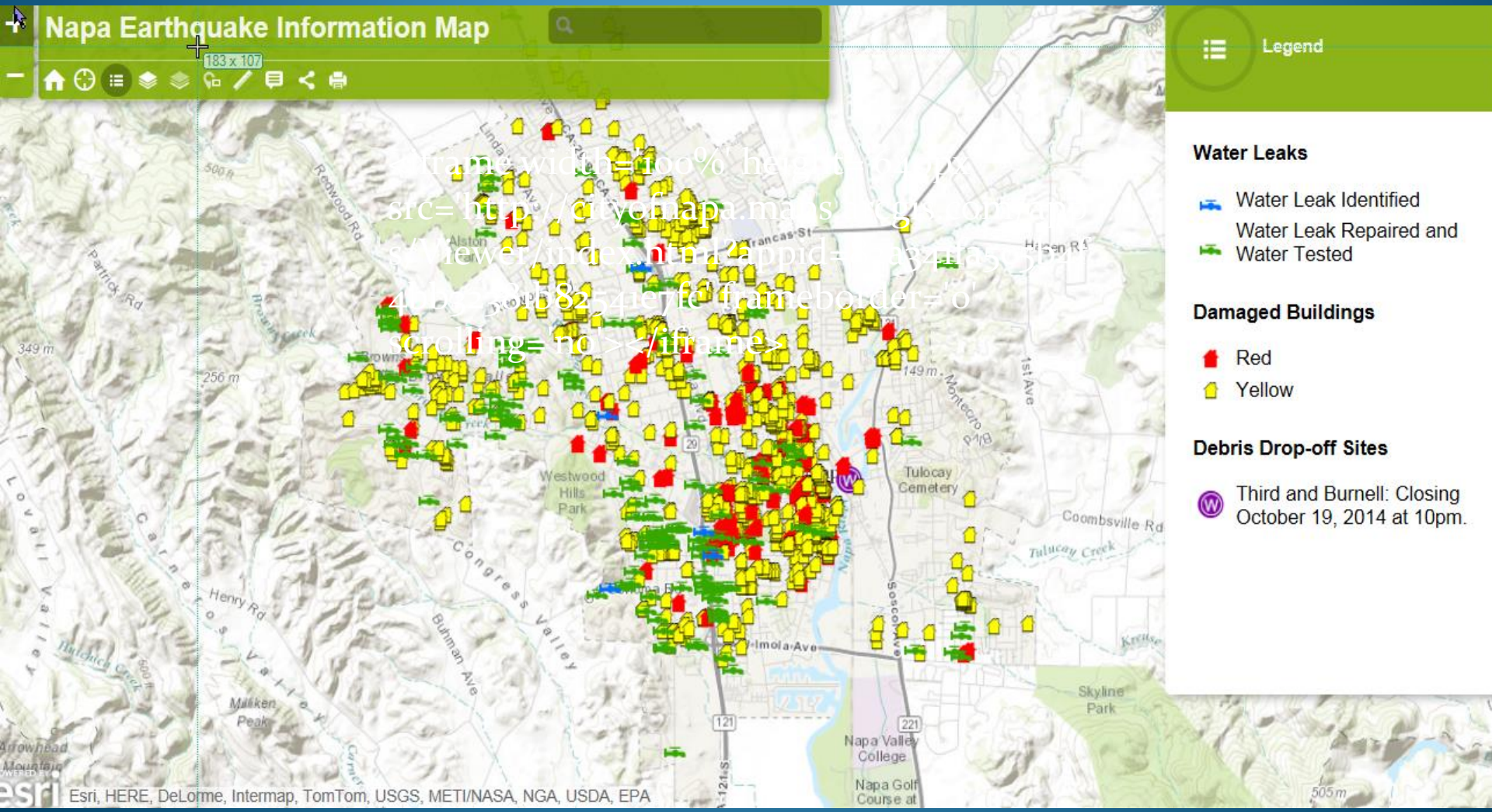
Home / News / Local News

DISASTER CLEANUP

Quake debris totals: 2.6 million pounds and counting

Recommend 230 Tweet 2 g+1 1 Pin it Share 2 Print Email





Napa Earthquake Information Map

183 x 107

Legend

Water Leaks

- Water Leak Identified
- Water Leak Repaired and
- Water Tested

Damaged Buildings

- Red
- Yellow

Debris Drop-off Sites

- Third and Burnell: Closing October 19, 2014 at 10pm.

ArcGIS Online for Disasters

Can't get to your data?



Old Sonoma Rd, Napa
August 24, 2014



Congress Valley Rd, Napa
August 24, 2014



Charter Oaks Apartments
3025 Browns Valley Rd, Napa
August 24, 2014

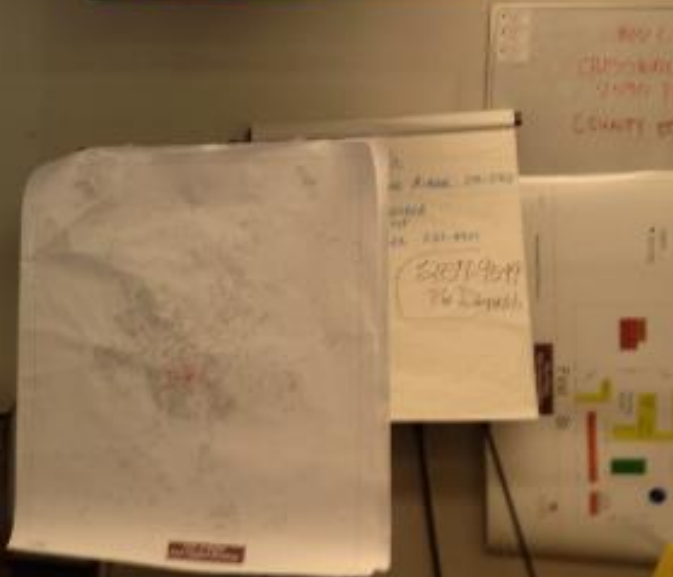


Napa Valley Mobile Home Park,
1040 Orchard Ave , Napa
August 24, 2014

ArcGIS Online for Disasters

Can't get to message out?

- confusion in a crisis
- compressed timeline
- quickly changing incidents and data
- sequestered in the EOC
- at mercy of those above you
- have to go through PIO









CITY of
NAPA



CalPERS members
When you're exploring your benefits this year, learn why Anthem is the right choice for you.

SOUTH NAPA EARTHQUAKE

COVERAGE OF THE 6.0 EARTHQUAKE THAT ROCKED THE NAPA VALLEY

NEWS > LOCAL

Napa Creates Map of Red, Yellow-Tagged Buildings

By Lisa Fernandez

View Comments (0) | [Open in app](#) | [Print](#) | [Share](#)



Image of a red-tagged building in Napa, Monday, Aug. 25, 2014.

Wednesday, Aug 27, 2014 • Updated at 6:53 AM PDT

Following Sunday's 6.0-magnitude earthquake that struck the heart of the nation's wine country — and sent several of those wine bottles crashing to the ground — city planners have created an interactive, online map to show which buildings were the most damaged.

As of Tuesday, the Napa Earthquake Damage Map showed the highest concentration of buildings on Brown Street, such as the old coathouse, and nearby Main Street.

• **Napa Boy Suffers Pelvic Fractures in Quake; Aunt**

As of Tuesday afternoon, Napa city leaders said 303 buildings were on the red-tag list, and 500 buildings on the yellow-tag list.

More than damaged buildings, however, the map showed a plethora of water leaks all over the city.



Dramatic Photos: Earthquake Wrecks Heavily in Napa

As of Tuesday, the public works department reported a total of 207 water mains that had broken throughout Napa.



CalPERS members
When you're exploring your benefits this year, learn why Anthem is the right choice for you.

Trending Stories:

Archie "Cruelest Sound" Battle Over Brain-Ceased Get Broader Into Battle Over Ballot Measure

Archie 5 Teens Warning From Halloween Event Killed in Crash

Archie Growing Use of Vagyu Cattle Alarm Health Officials

Archie Police Hobbers Lapsing Women of Asian Broken Desert

Archie Twins Arrested in Foster Farms Chicken Measure Caps



NEWSLETTERS

Receive the latest local updates in your inbox

SIGN

[Privacy Policy](#)

[More](#)

[Newsletters](#)

2014 JEEP PATRIOT
Starting at \$11,999

HOT TOPICS: New Lords single GM recall Johnny Cash Trail John McNath Heat wave

All Access is here! 38 newspapers, one subscription.

[CLICK FOR DETAILS](#)

Home > California Earthquakes > Story

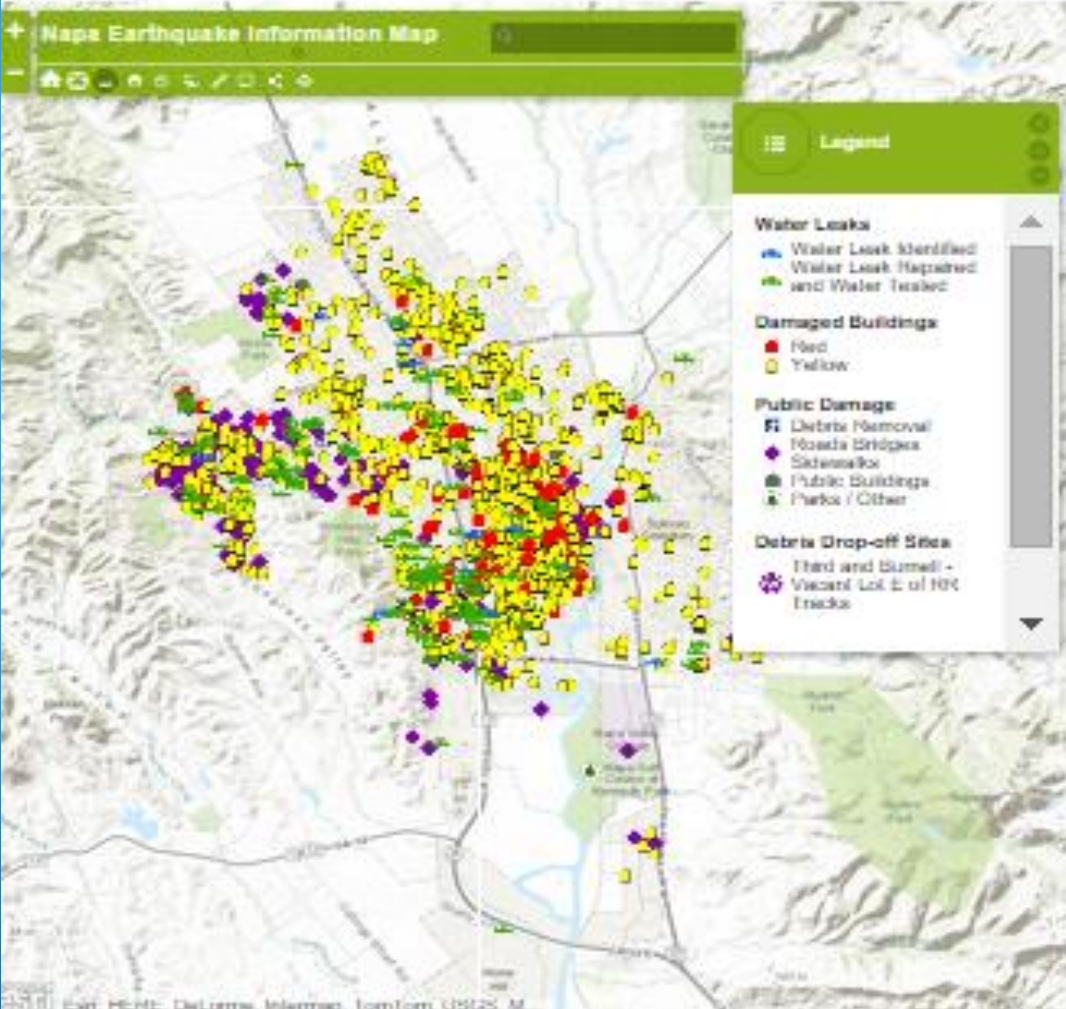
Napa earthquake map: Red-tagged buildings

City of Napa

POSTED: 08/26/2014 11:48:03 AM PDT | UPDATED: ABOUT A MONTH AGO

0 COMMENTS

from the City of Napa, a map of damaged buildings after the Aug. 24 earthquake. Click here for latest headlines on the quake's aftermath.





Tim Craig @geoTC · Aug 28

Lots of #earthquake damage in **Napa**. Good to see fewer Yellow tags than Red. Still a lot of work to do. cityofnapa.maps.arcgis.com/apps/Viewer/in... #GIS

Expand

Reply Retweet Favorite More



Keith Cooke @KeithCookeEsri · Aug 28

Live map showing status of damage assessment and debris drop-off sites in #Napa. mercurynews.com/california-ear... #GIS #Esri #napaquake

 Mercury News

Napa earthquake map: Red-tagged buildings

From the City of Napa, a map of damaged buildings after the Aug. 24 earthquake.

[View on web](#)



 Birmingham, AL



TouchShare @TouchShare · Aug 26

Napa earthquake as mapped by social media posts cnet.co/1vlijP via @CNET #Esri #GIS #NapaQuake

 CNET

Napa earthquake as mapped by social media posts

Mapping software company Esri creates a real-time interactive map on the 6.0-magnitude quake filled with information from people's Twitter updates and YouTube videos.

[View on web](#)



Expand

Reply Retweet Favorite More

GIS COMMAND CENTRAL !

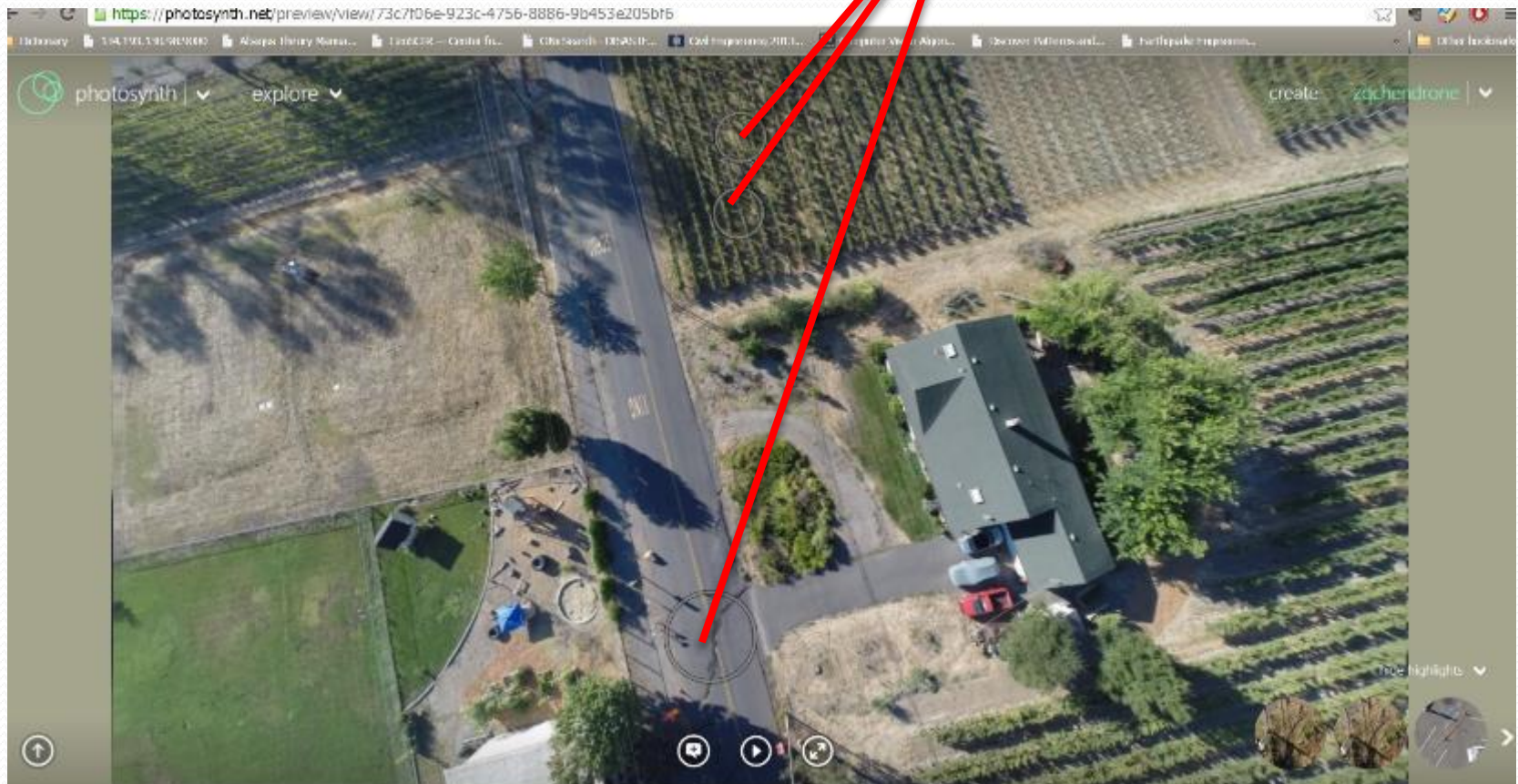


Crowdsourcing of Surface Rupture in Vineyard in Drone Data

<https://photosynth.net/preview/view/73c7f06e-923c-4756-8886-9b453e205bf6>

- (1) Drone images are processed and 3D virtual models are created
- (2) Published through Photosynth for crowdsourcing
- (3) Attracted more than 4000 views

Crowdsourced seismic ruptures





Dianne Feinstein

United States Senator for California

[HOME](#)[ABOUT DIANNE](#)[ISSUES](#)[SERVICES](#)[NEWS ROOM](#)[FOR STUDENTS](#)[CONTACT](#)

[Home](#) / [News Room](#) / [Press Releases](#)

[Print](#) 

Sep 12 2014

Feinstein Applauds Disaster Declaration, Urges Individual Assistance

Washington—Senator Dianne Feinstein (D-Calif.) today released the following statement following the Federal Emergency Management Agency (FEMA) decision to declare a major disaster in the California counties of Napa, Solano and Sonoma in light of the August 24th earthquake:

“FEMA’s decision to approve a major disaster declaration for Napa, Solano and Sonoma counties allows the state and local governments to quickly receive critical resources. The decision will also provide important hazard mitigation funds so California can continue to prepare for future earthquakes.

“I’m disappointed FEMA has not yet approved much-needed individual assistance for victims of the earthquake. Many California families remain in shelters, and hundreds of homes have been red- or yellow-tagged due to structural damage. I urge FEMA to approve individual assistance to help these families rebuild.”

Related Links

- ▶ [Press Releases](#)
- ▶ [Commentary](#)
- ▶ [Feinstein in the News](#)
- ▶ [Video Library](#)
- ▶ [Official Photo](#)

<http://bit.ly/iniLoGR>

NAPA EARTHQUAKE 2014 - A Photo Tour of Bu

The South Napa Earthquake occurred on August 24 at 3:20 a.m. This map

APPLICATION CONFIGURATION

SAVE

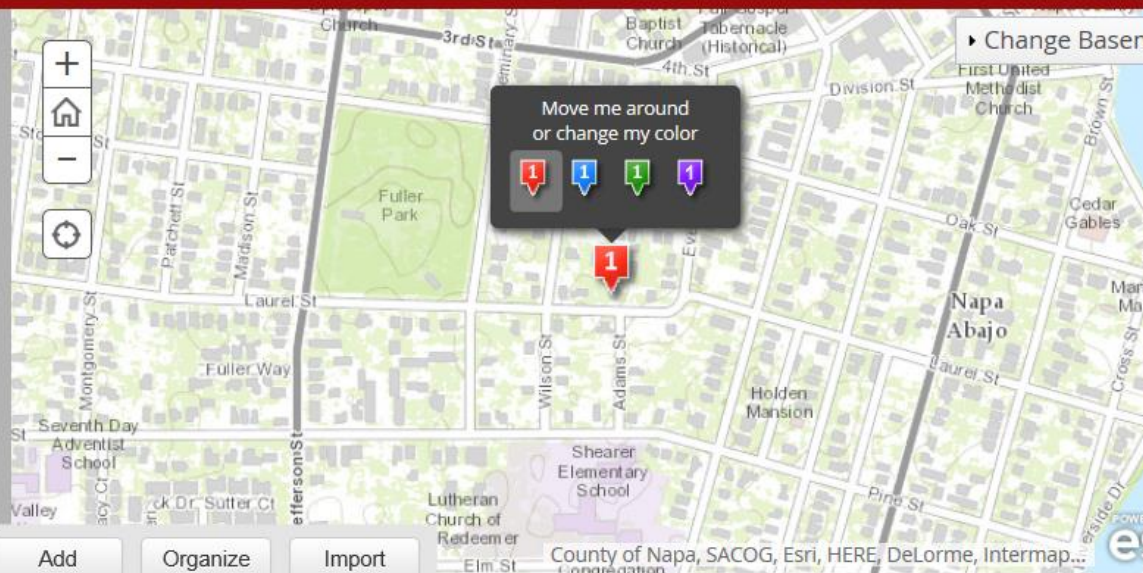
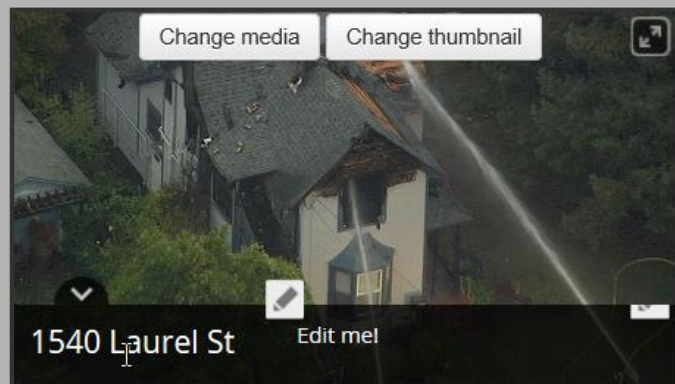
SHARE

SETTINGS

HELP

1 unsaved change ; Tour is shared publicly

Earthquake Damaged Buildings



Add

Organize

Import



1540 Laurel St



2247 First St



Third & Brown



1245 Main St Vintners - Collective



1026 Caymus St



903 Vallejo St



1528 G St



Charter Oaks Apartments

Have your ArcGIS Online for Disasters Toolkit Ready

- Don't wait to have your map on ArcGIS Online
- Don't wait for your Escalade when people are standing in line for their vespas
- Network
 - ArcGIS Online – Crowd Sourcing
 - In person, meetups, users groups
- Be a GIS Evangelist

<http://doc.arcgis.com/en/arcgis-online/administer/configure-site.htm>

<http://doc.arcgis.com/en/web-appbuilder/>

Katy Wallis
GIS Coordinator City of Napa
707-257-9637
kwallis@cityofnapa.org

