

Spatial enabled documents by linking GIS with Document Management Systems

Houston, February 24

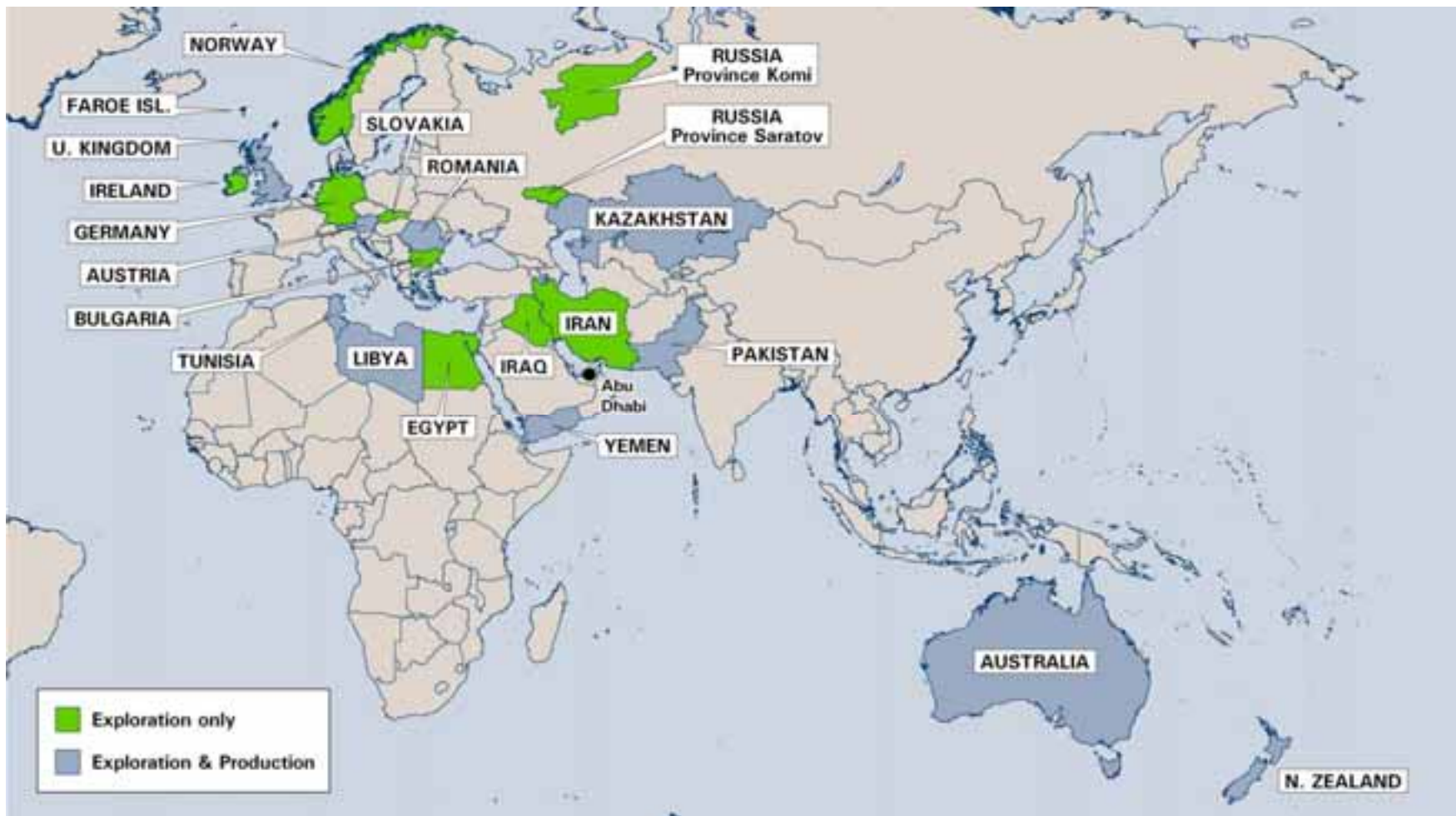
Jürgen Mischker - OMV E&P
Jeff Hecht - GIS Technology, Inc.



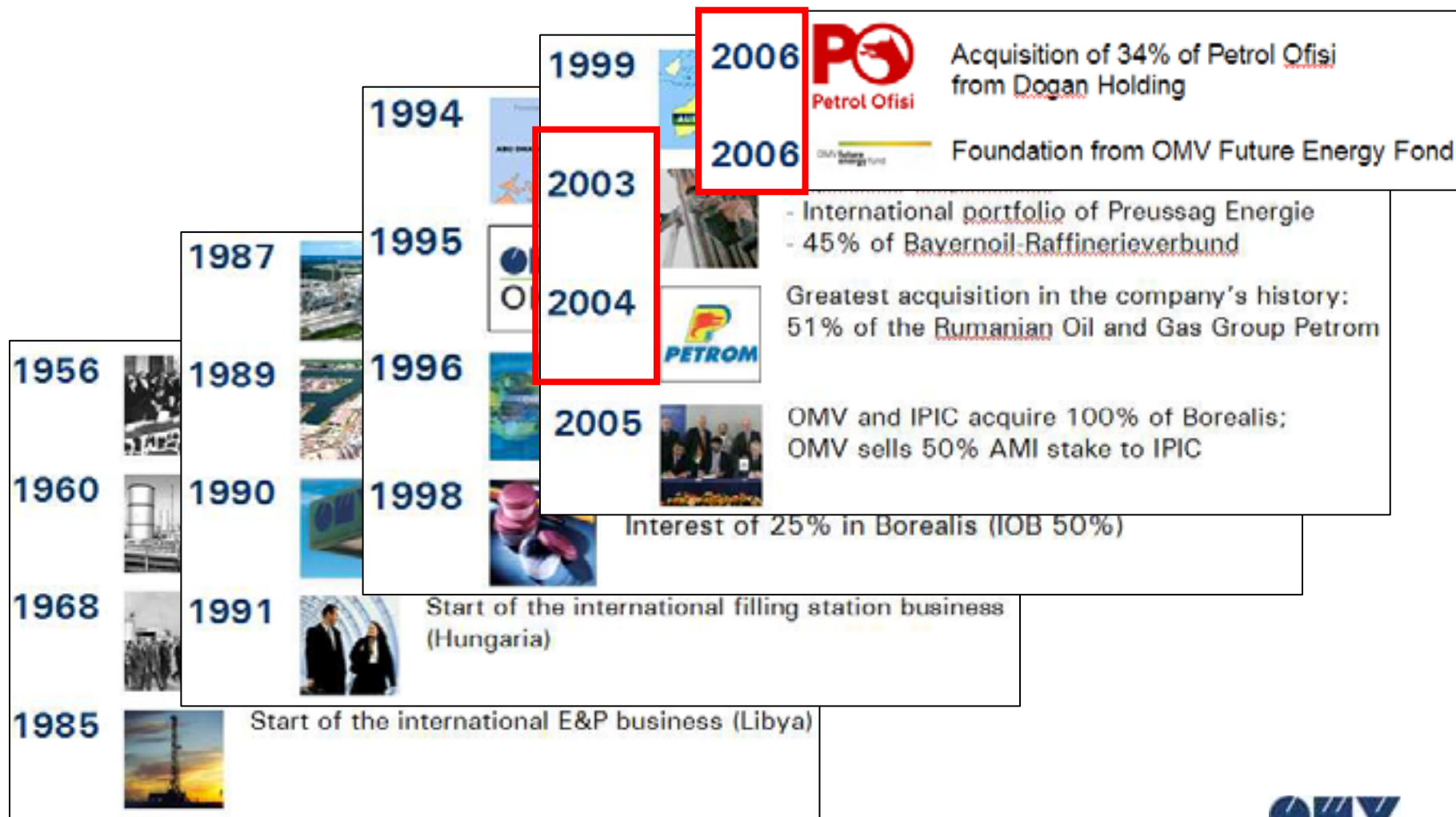
Agenda

- ▶ OMV „Propaganda“
- ▶ Architecture (past)
- ▶ Business requirements - Targets
- ▶ Milestones - Project description
- ▶ Technical description
- ▶ Architecture (now)
- ▶ Business Benefits
- ▶ Lessons Learned
- ▶ Demo

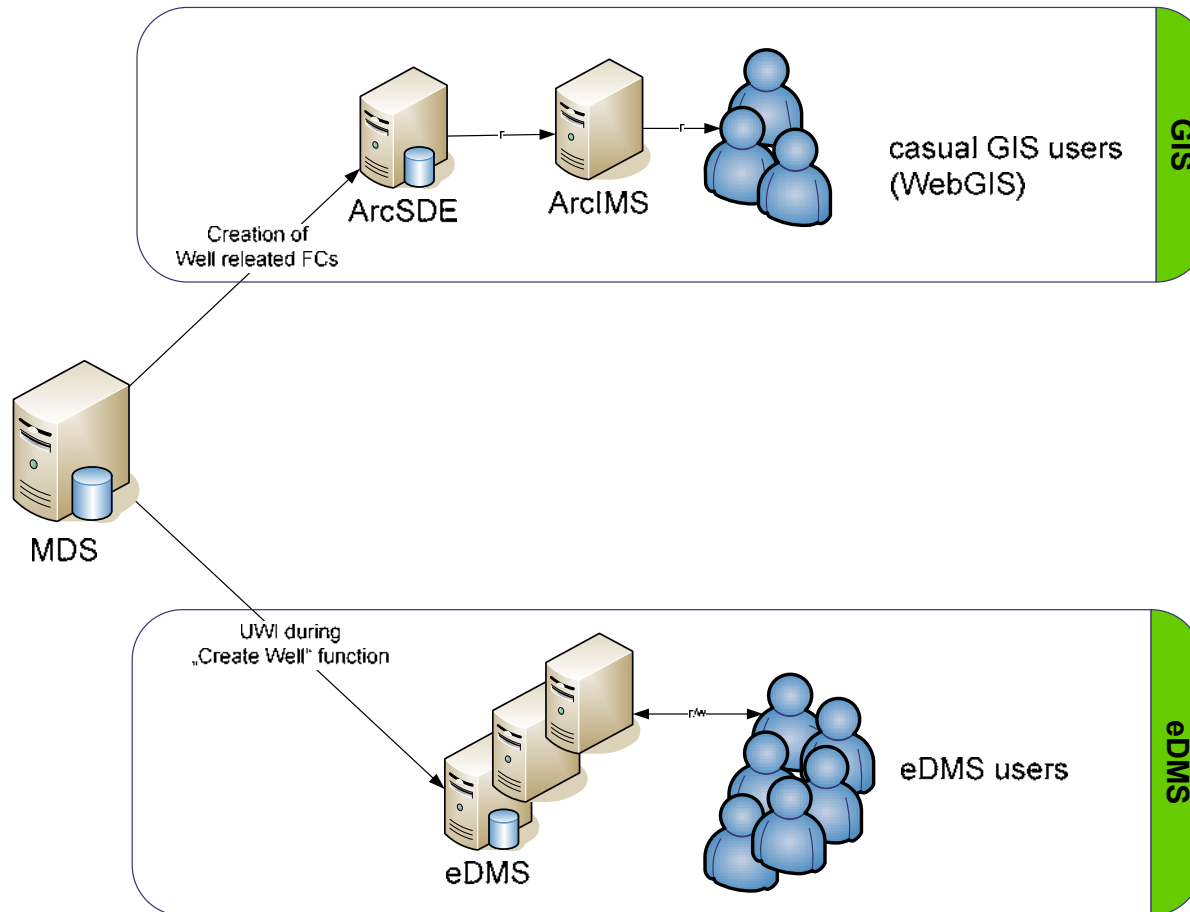
OMV Overall



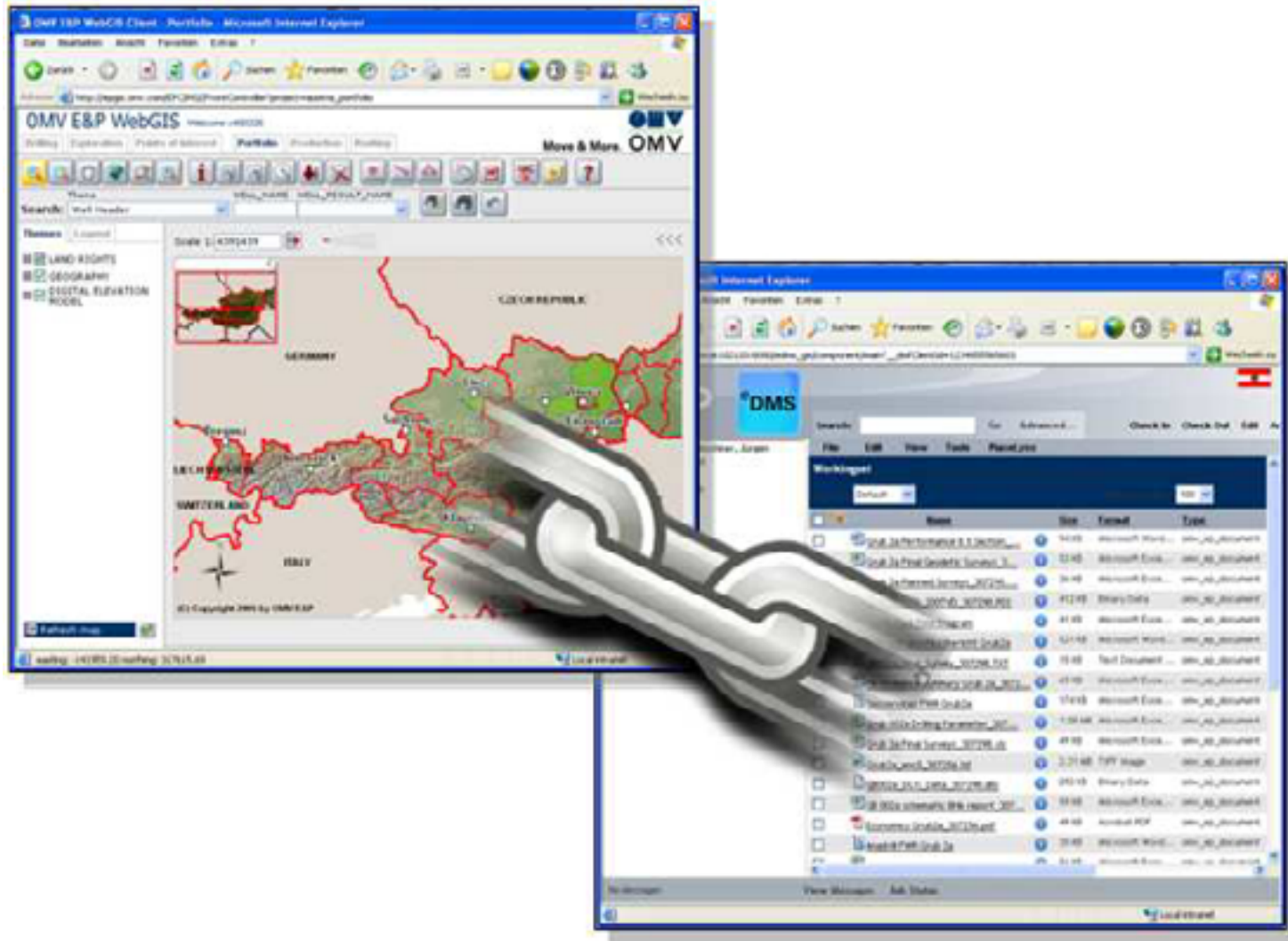
OMV Overall



GIS and eDMS environment



GIS and eDMS environment – User point of view



Targets - Business Requirements

► Query the eDMS through an GIS frontend.



- Provide a query to the existing systems (GIS and eDMS).
- Provide a query to the existing user interface.
- Provide a user interface that can be used to query the data.
- Provide a user interface that can be used to query the data.



Project description

▶ **Milestones**

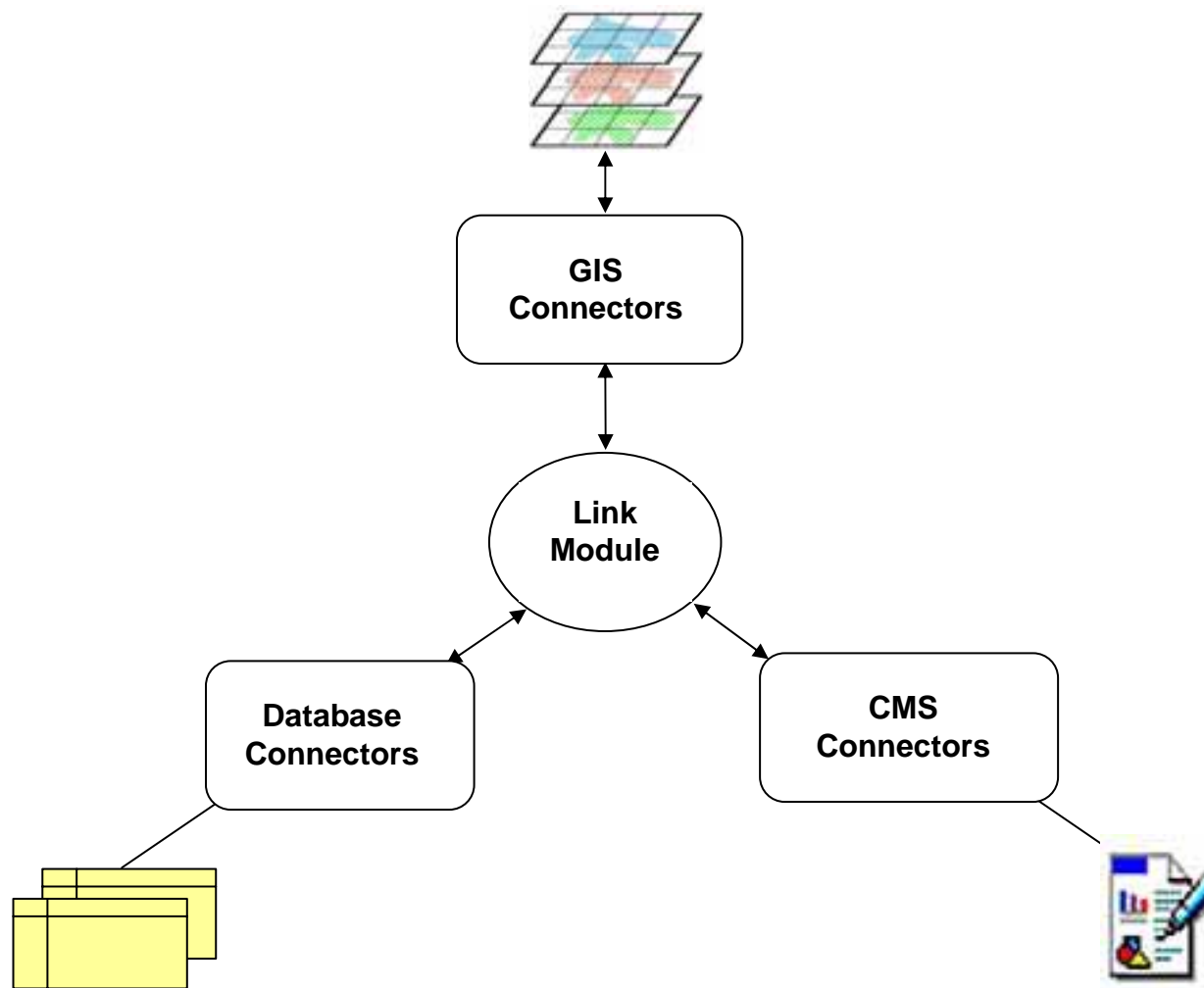
- ▶ Evaluation 2007/2008
- ▶ Project Kick Off – July 2008
- ▶ Project Closure – Dec 2008/Feb 2009

▶ **Other projects with dependencies:**

- ▶ Implementation of the new **UWI**
- ▶ Release of the reshaped **eDMS frontend**



PlaceLynx architecture



Project modules

- ▶ **Connector modules for**

- ▶ ESRI
- ▶ Documentum
- ▶ IBM
- ▶ Laserfiche
- ▶ Relational Databases

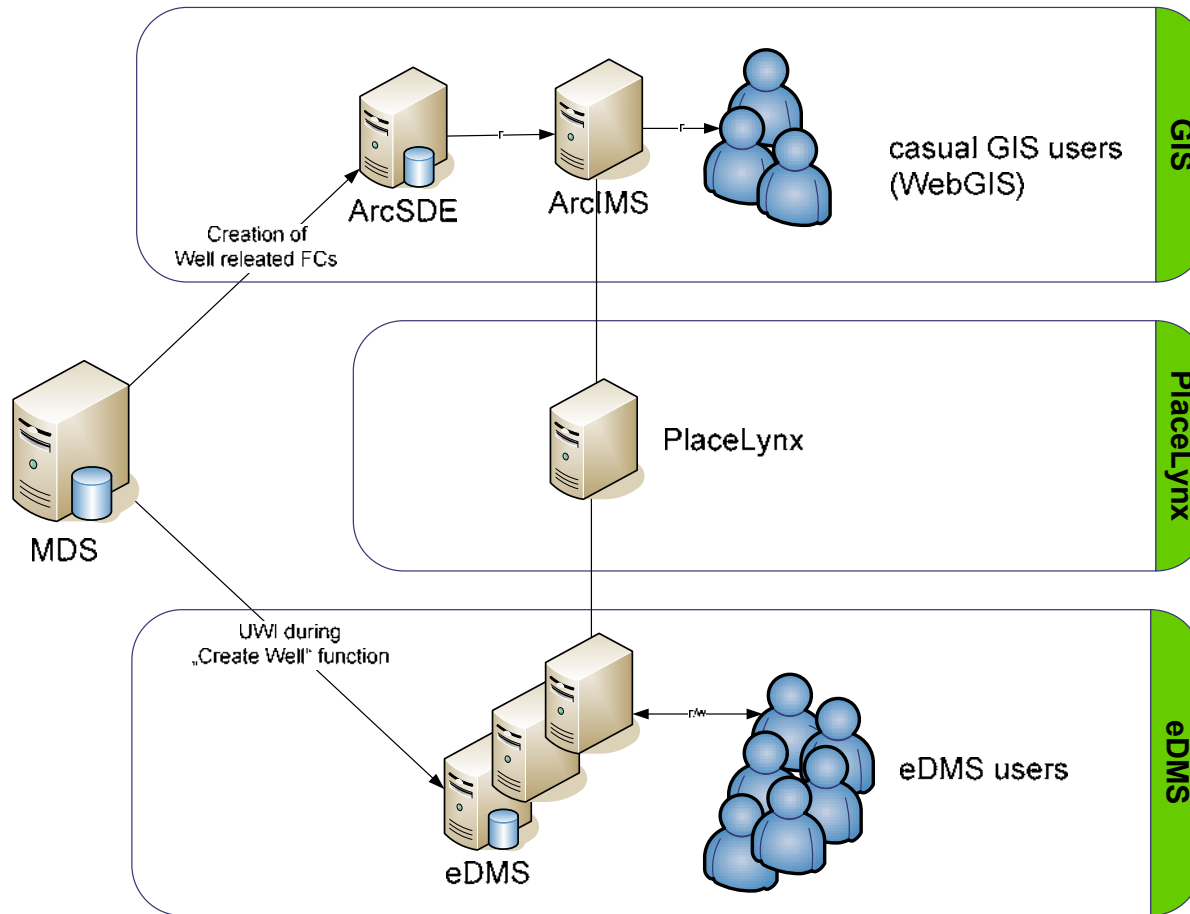
- ▶ **All Modules are interoperable**

- ▶ Web and desktop modules can be used together
- ▶ Multiple repositories can be searched in a single user operation

Schema level Integration

- ▶ Based on relationships between the schemas of integrated systems.
 - ▶ Not necessary to form connections between individual map features and files one by one.
- ▶ Relationships are called "*Links*".
- ▶ Variety of ways to relate map, file, and database entities.
 - ▶ Key – foreign key relationships
 - ▶ Full text indexing
 - ▶ Addresses, linear measurements, coordinates
 - ▶ Geo-referencing
- ▶ Links are very flexible
 - ▶ Can adapt to discrepancies among schemas
 - ▶ Can include complex queries
 - ▶ Can include multiple steps
 - ▶ Can perform a variety of actions

Architecture@OMV AT



Business Benefits (Examples)

- ▶ DDR and/or technical reports for surrounding wells
- ▶ Scanned logs along a seismic line
- ▶ Find documents without “spelling” name -> query the GIS
- ▶ (WebRouting / documents tagged to facilities)
- ▶ Find geological studies within an area
- ▶ ...

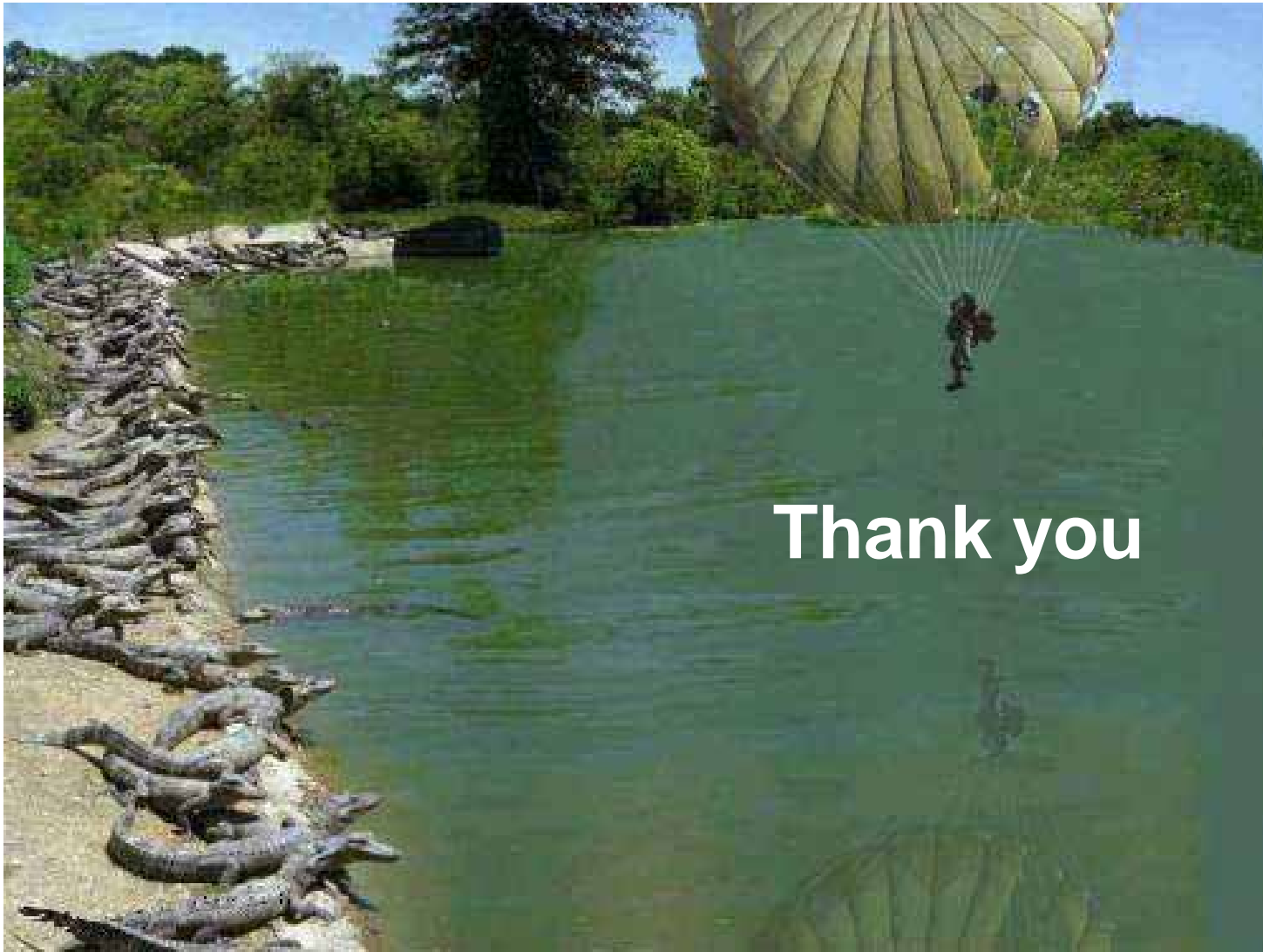


Lessons Learned

- ▶ Aspects of the repository design that can facilitate integration
 - ▶ normalize design of the repositories
 - ▶ number of metadata properties
- ▶ project management issues arising from coordinating of several 3rd parties (with different time zones)
- ▶ Importance of an test environment that faithfully mimics production
- ▶ alignment of all related project (new eDMS release)



Demo



Thank you



Demo – Live of Screenshots

The screenshot displays the OMV E&P WebGIS interface within a Microsoft Internet Explorer browser. The main map area shows a network of wells and connections, with labels such as SPAT 1, SPAT 2, ED 1, ED 2, ED 3, ED 4, ED 5, ED 6, ED 7, ED 8, ED 9, ED 10, ED 11, ED 12, ED 13, ED 14, ED 15, ED 16, ED 17, ED 18, ED 19, ED 20, ED 21, ED 22, ED 23, ED 24, ED 25, ED 26, ED 27, ED 28, ED 29, ED 30, ED 31, ED 32, ED 33, ED 34, ED 35, ED 36, ED 37, ED 38, ED 39, ED 40, ED 41, ED 42, ED 43, ED 44, ED 45, ED 46, ED 47, ED 48, ED 49, ED 50, ED 51, ED 52, ED 53, ED 54, ED 55, ED 56, ED 57, ED 58, ED 59, ED 60, ED 61, ED 62, ED 63, ED 64, ED 65, ED 66, ED 67, ED 68, ED 69, ED 70, ED 71, ED 72, ED 73, ED 74, ED 75, ED 76, ED 77, ED 78, ED 79, ED 80, ED 81, ED 82, ED 83, ED 84, ED 85, ED 86, ED 87, ED 88, ED 89, ED 90, ED 91, ED 92, ED 93, ED 94, ED 95, ED 96, ED 97, ED 98, ED 99, ED 100. The interface includes a search bar at the top, a legend on the left, and a data table on the right.

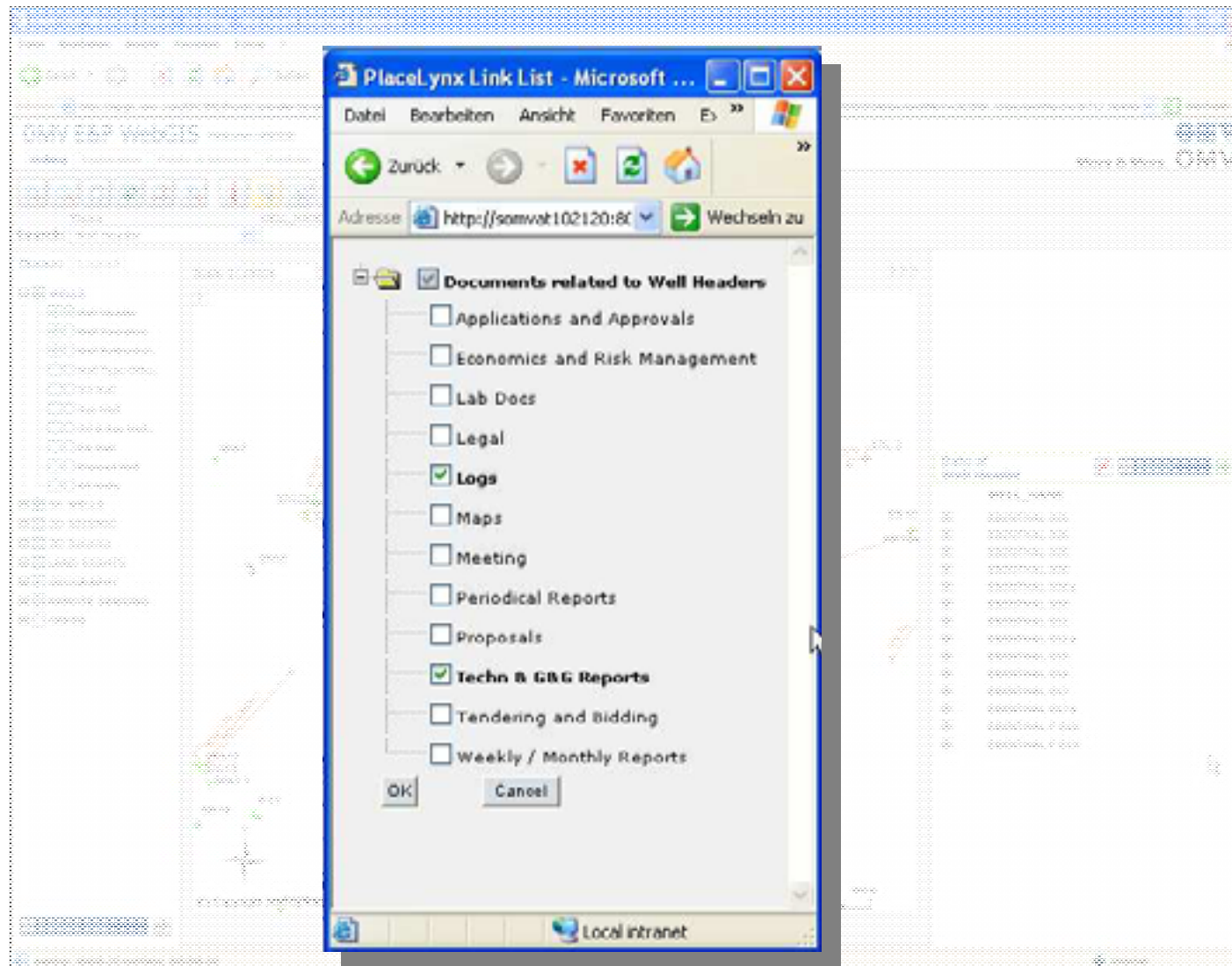
WELL_NAME
EBENTHAL 001
EBENTHAL 004
EBENTHAL 006
EBENTHAL 009
EBENTHAL 009a
EBENTHAL 009
EBENTHAL 011
EBENTHAL 011a
EBENTHAL 015
EBENTHAL 016
EBENTHAL 017
EBENTHAL 017a
EBENTHAL F 015
EBENTHAL F 019

A callout box highlights a 'Report' button and a search icon. Below the button, there is a text input field containing '>> Search in eDMS'.

A callout box highlights a 'Report' button.



Demo – Live of Screenshots



Demo – Live of Screenshots

The screenshot shows the E&P DMS web interface in Internet Explorer. The browser address bar shows the URL: http://www.122120-8000/edms/component/jwnt?_afClientID=L22630190223. The interface includes a search bar, a navigation tree on the left, and a main table of documents.

Name	Size	Format	Type	Version	Modified	Checked out By
ME Theoria file.pdf	19 KB	Acrobat PDF	ole_db_document	CURRENT, 1.0	02/05/2009 19:20:51	
AT2008_Theoria.pdf	13 KB	Acrobat PDF	ole_db_document	CURRENT, 1.0	02/05/2009 19:20:49	
Arabic File.tif	7.42 KB	Acrobat PDF	ole_db_document	CURRENT, 1.0	02/05/2009 19:20:50	
AT 4015-201-10_Zusammenfassung...	1.24 KB	Acrobat PDF	ole_db_document	CURRENT, 1.0	09/12/2008 16:43:46	
AT 4015-201-21_Zusammenfassung...	320 KB	Acrobat PDF	ole_db_document	CURRENT, 1.0	09/12/2008 16:43:51	
AT 4015-204-12_Zusammenfassung...	720 KB	Acrobat PDF	ole_db_document	CURRENT, 1.0	09/12/2008 16:43:46	
AT 4015-208-11_Zusammenfassung...	327 KB	Acrobat PDF	ole_db_document	CURRENT, 1.0	09/12/2008 16:43:46	
AT 4015-208-15_Zusammenfassung...	326 KB	Acrobat PDF	ole_db_document	CURRENT, 1.0	09/12/2008 16:43:46	
AT 4015-208-24_Zusammenfassung...	326 KB	Acrobat PDF	ole_db_document	CURRENT, 1.0	09/12/2008 16:43:46	
AT 4015-207-11_Zusammenfassung...	1.43 KB	Acrobat PDF	ole_db_document	CURRENT, 1.0	09/12/2008 16:43:46	
AT 4015-207-12_Zusammenfassung...	1.22 KB	Acrobat PDF	ole_db_document	CURRENT, 1.0	09/12/2008 16:43:46	
AT 4015-207-13_Zusammenfassung...	1.25 KB	Acrobat PDF	ole_db_document	CURRENT, 1.0	09/12/2008 16:43:46	
AT 4015-207-16_Zusammenfassung...	363 KB	Acrobat PDF	ole_db_document	CURRENT, 1.0	09/12/2008 16:43:47	
AT 4015-207-19_Zusammenfassung...	508 KB	Acrobat PDF	ole_db_document	CURRENT, 1.0	09/12/2008 16:43:47	
AT 4015-208-20_Zusammenfassung...	1.56 KB	Acrobat PDF	ole_db_document	CURRENT, 1.0	09/12/2008 16:43:47	
AT 4015-208-12_Zusammenfassung...	909 KB	Acrobat PDF	ole_db_document	CURRENT, 1.0	09/12/2008 16:43:46	
AT 4015-209-91_Zusammenfassung...	2.22 KB	Acrobat PDF	ole_db_document	CURRENT, 1.0	09/12/2008 16:43:46	
AT 4015-214-91_Zusammenfassung...	369 KB	Acrobat PDF	ole_db_document	CURRENT, 1.0	09/12/2008 16:43:46	
AT 4015-212-10_Zusammenfassung...	2.61 KB	Acrobat PDF	ole_db_document	CURRENT, 1.0	09/12/2008 16:43:46	
AT 4015-214-10_Zusammenfassung...	1.26 KB	Acrobat PDF	ole_db_document	CURRENT, 1.0	09/12/2008 16:43:46	
AT 4015-216-10_Zusammenfassung...	7.68 KB	Acrobat PDF	ole_db_document	CURRENT, 1.0	09/12/2008 16:43:46	
AT 4015-216-20_Zusammenfassung...	3.43 KB	Acrobat PDF	ole_db_document	CURRENT, 1.0	09/12/2008 16:43:46	
AT 4015-001_Gas LOGs 08 01...	23.91 KB	TIF Image	ole_db_document	CURRENT, 1.0	09/12/2008 20:12:54	
AT 4015-001_Summary 08 01...	1.22 KB	Acrobat PDF	ole_db_document	CURRENT, 1.0	09/12/2008 20:04:53	
AT 4015-001_Exp 08 01...	1.76 KB	Acrobat PDF	ole_db_document	CURRENT, 1.0	02/15/2009 09:11:10	
AT 4015-001_Pack from 08 01...	26.4 KB	TIF Image	ole_db_document	CURRENT, 1.0	09/12/2008 20:12:52	

This block shows a semi-transparent screenshot of a document management system interface. It features a search bar at the top, a list of documents, and a search bar at the bottom. The interface is partially obscured by a grid pattern.

