

Agency: Nassau County, Property Appraiser Office
Authors: Jason Gregory
Track: State & Local Government



Migrating County Interactive Maps to ArcGIS
Server using ArcGIS API for FLEX

Nassau County Property Appraiser

This presentation is going to focus on the migration of the Nassau County's Property Appraiser Online maps to ArcGIS Server using ArcGIS API for Flex. We will briefly talk about our past, present and future direction of our online maps and why the county elected to switch to the ArcGIS API for Flex. In addition we will discuss some of our pro and cons we had during our migration. At the end of our session we will be giving a quick demonstration of the new site and boast on the Flex capabilities.. .

Introduction

ArcGIS Server using ArcGIS API for FLEX



Nassau County, Property Appraiser

Property Appraiser Services:

The Property Appraiser has the legal responsibility to discover the market value set by activity in the real estate marketplace and to appraise property accordingly. Our job is to serve the public by providing [taxing authorities](#) with accurate and uniform property valuations for tax purposes

GIS Division Services:

Maintain Parcels & provide County Wide GIS Support

About Us (Department)

ArcGIS Server using ArcGIS API for FLEX



Nassau County, GIS Division

Support Service Division – Operational Snapshot

- Report to the Nassau County property Appraiser

- Serve as the GIS Support for County BOCC

- Provide network, technology, and applications development services

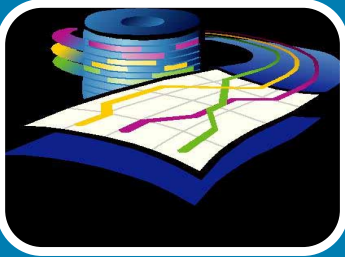
- Utilize GIS as the foundation for Web-delivered services

- Plans and implements under a Service Oriented Architecture (SOA)

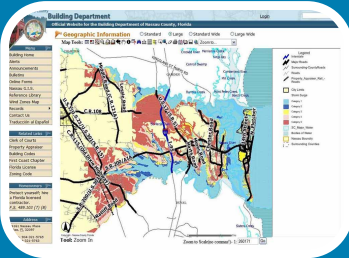
About Us (Division)

ArcGIS Server using ArcGIS API for FLEX

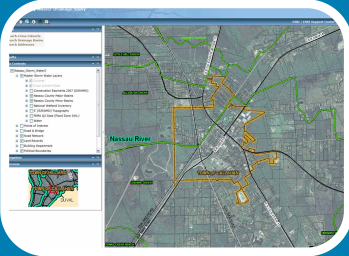




Q-Public



Web-GIS: ESRI's ArcIMS 9.0

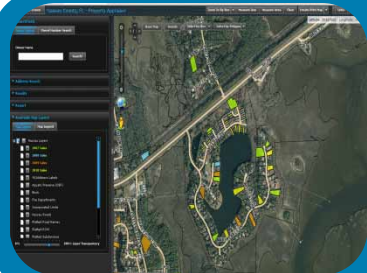


Server-GIS: ESRI's ArcGIS Server 9.2 (*Standard Enterprise*)

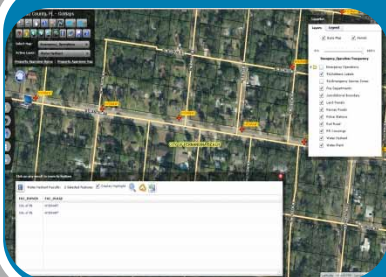
Previous Web Services

ArcGIS Server using ArcGIS API for FLEX



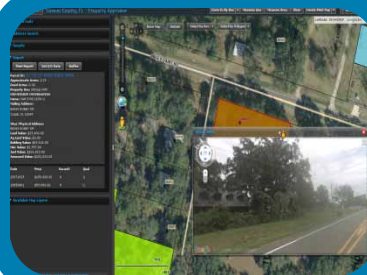


ArcGIS Server ArcGIS API for FLEX (Property Appraiser)



ArcGIS Server using ArcGIS API for FLEX (Go Maps)

- Server Setup and Deployment
- Enterprise Geodatabase Design
- Map and Web Services Setup and Customization
- Visualization and Spatial Analysis



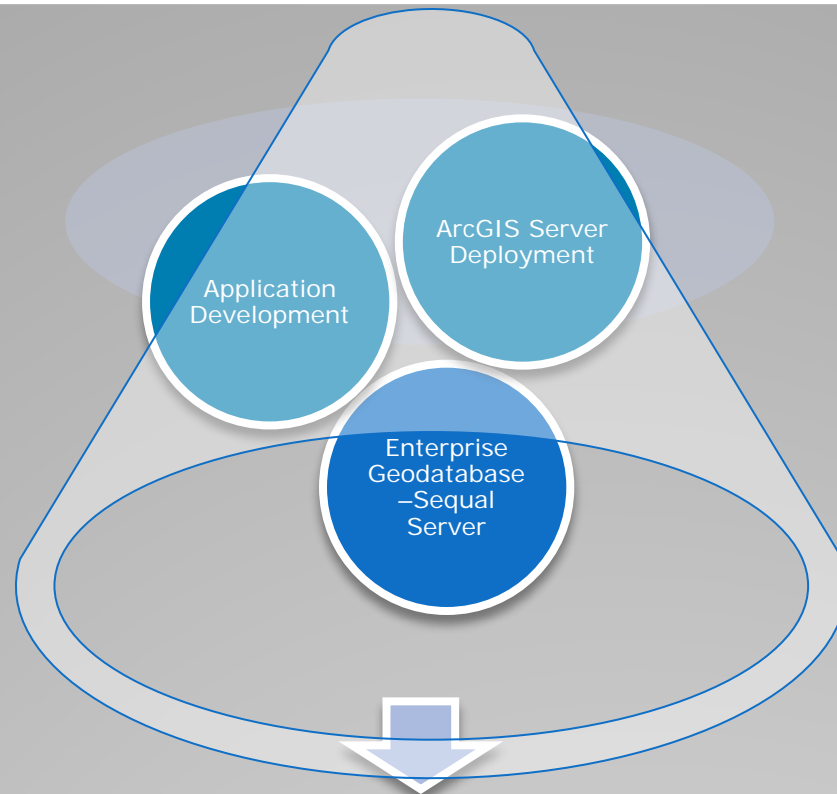
ArcGIS Server Web Editable Maps

- Migration to ArcGIS Server
- Port Existing Web Services
- Extend Geoprocessing Capabilities
- Spatial Data Management

Our New Interactive Maps using Flex

ArcGIS Server using ArcGIS API for FLEX





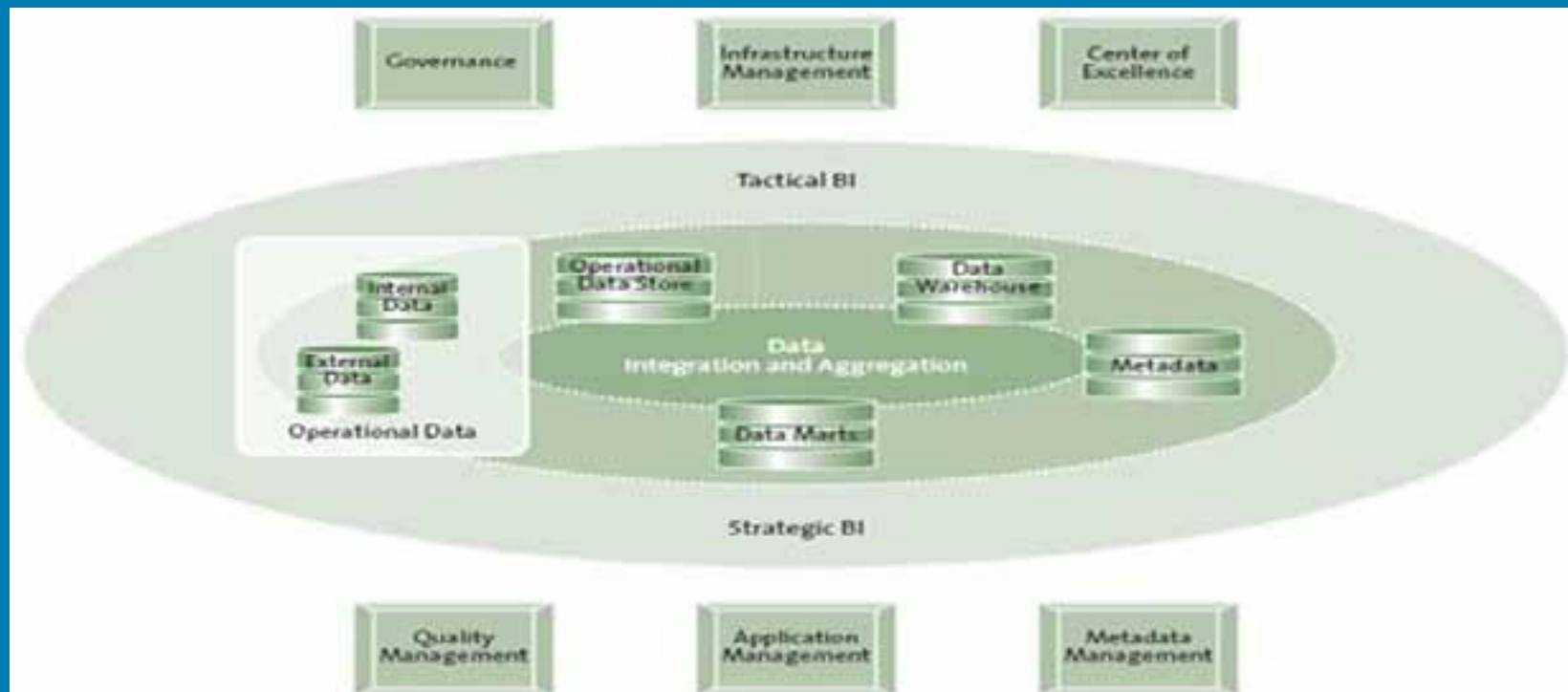
BUSINESS INTELLIGENCE AND DATA WAREHOUSE INITIATIVE

GIS Data out to the Web

ArcGIS Server using ArcGIS API for FLEX



BUSINESS INTELLIGENCE AND DATA WAREHOUSE INITIATIVE



GIS Support Services

ArcGIS Server using ArcGIS API for FLEX



To Learn More About On-Going and
Future Nassau County GIS Projects
please visit:

<http://www.nassaugis.com>

&

<http://www.ROKtech.net>

Or contact:

Jason Gregory

Via E-mail: jgregory@nassauflpa.com

Or

Via Phone: (904) 491-7316



Contact

ArcGIS Server using ArcGIS API for FLEX



Lets Go Look at Maps



ArcGIS Server using ArcGIS API for FLEX





Questions & Comments

ArcGIS Server using ArcGIS API for FLEX

