

# NG911 Intro

**Bert Granberg**  
**[bgranberg@utah.gov](mailto:bgranberg@utah.gov)**

**801 558 3563**



**UTAH AGRC**  
Automated Geographic Reference Center



State of Utah

Automated Geographic Reference Center (AGRC)

Facilitate successful applications of GIS technology

Partner with state agencies & local government to maintain the State Geographic Information Database (SGID)

- Framework Data
- Thematic/Business Data

Maintain infrastructure:

- [gis.utah.gov](http://gis.utah.gov) data clearinghouse
- GIS data servers

imagery, base maps, vector data, applications, GPS

# Critical e911 Components

## Caller and Address Services (ANI and ALI)

- Phone number, and then address associated with phone
- Telephone # primarily informs call flow
- Maintained by 3rd party

## Master Street Address Guide (MSAG)

- Street Address Ranges & Responsibility Zone Codes
- Is validation check for ALI addresses
- Tabular, Rigid, Not Used in Real Time
- Separate data maintenance process from GIS data



# Critical NG911 GIS Data Layers

## Location Validation

- Providers responsible for determining location (lat/long)
- 911 must provide address validation service (LVF)
  - GIS Road Centerlines w/ Addressing Info
  - GIS Address Points

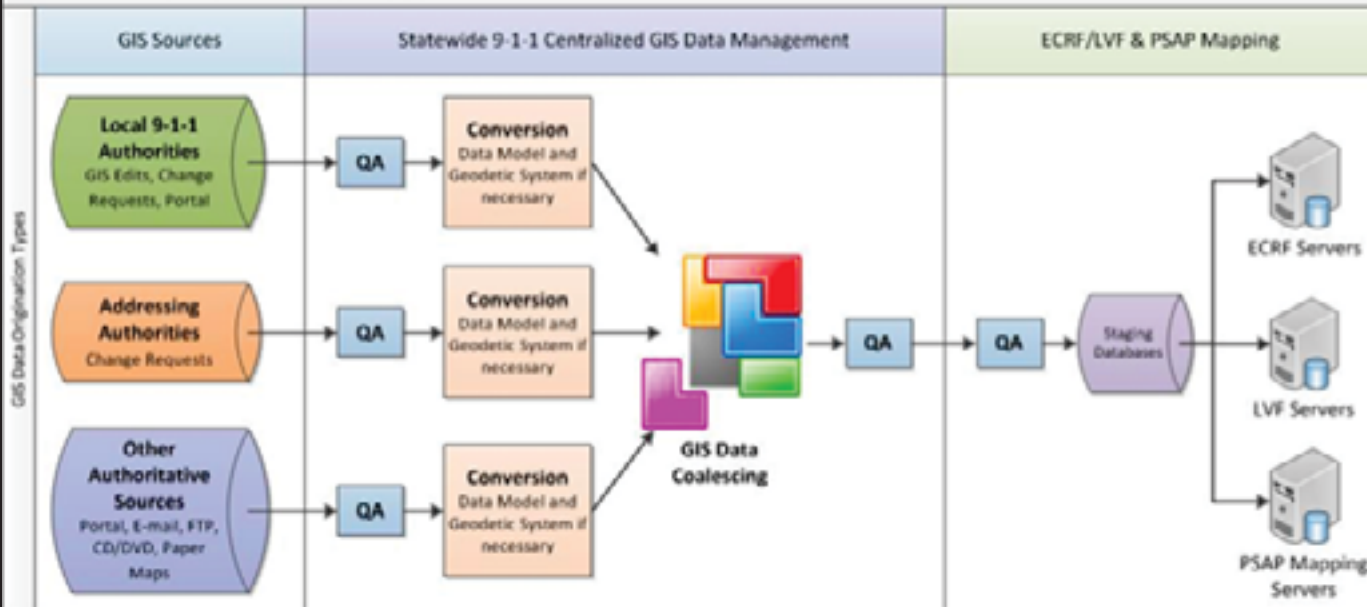
## Call Routing (ECRF)

- Location (Lat/Long) from provider informs Call Flow
  - PSAP Service Area Boundaries
  - General Law, Fire, EMS Response Areas (ESN)
- Can be updated in realtime!
- GIS dataset used directly for:
  - Call Routing, Call Taking (+ *Dispatch, and in Field*)

NEXT-GENERATION LOCATION INFORMATION PROVISIONING  
(FIGURE 2)



NG9-1-1 GIS Provisioning System Overview

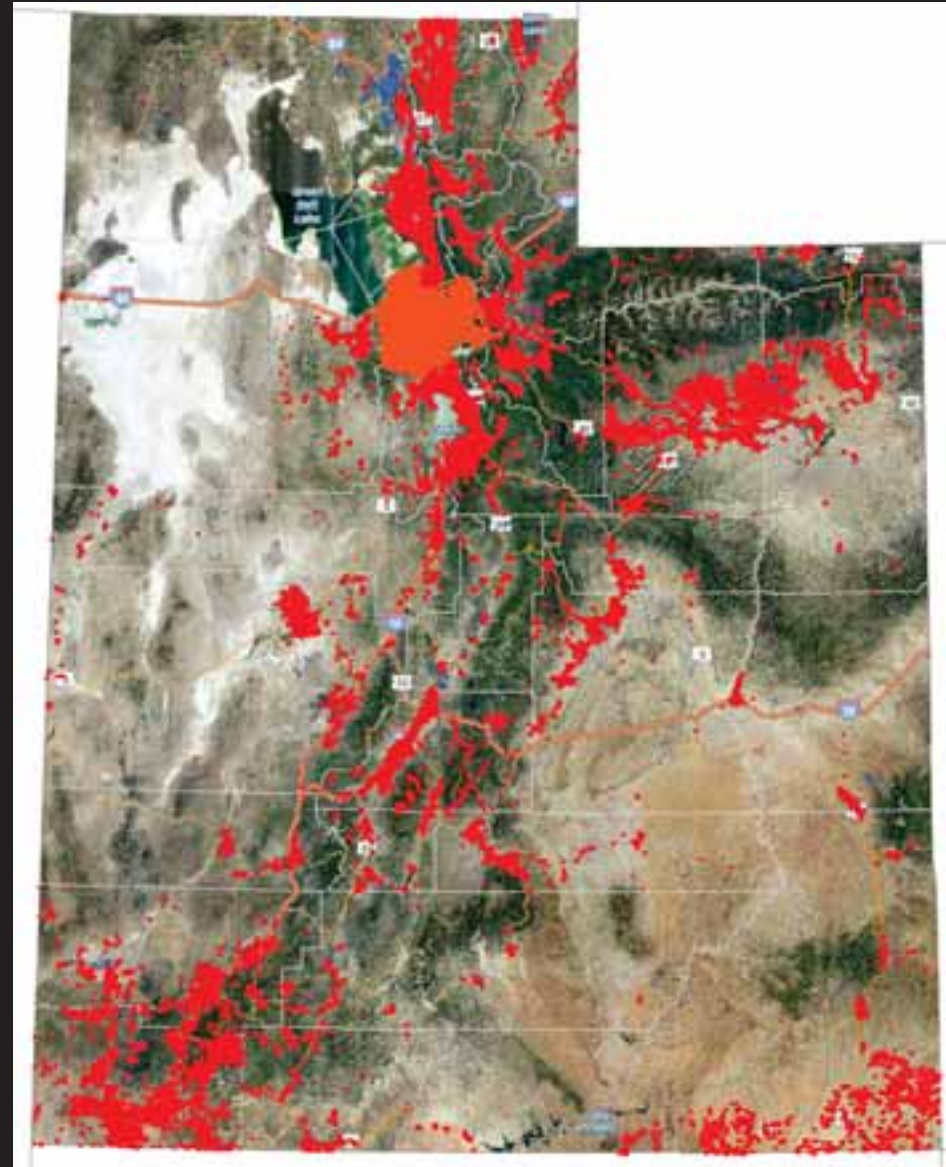


# PSAP Service Areas



# Address Points

- w/ Full and Parsed Address Attributes
- County Address Grants
  - funding
  - single pt of contact
  - data updates from web-based end point





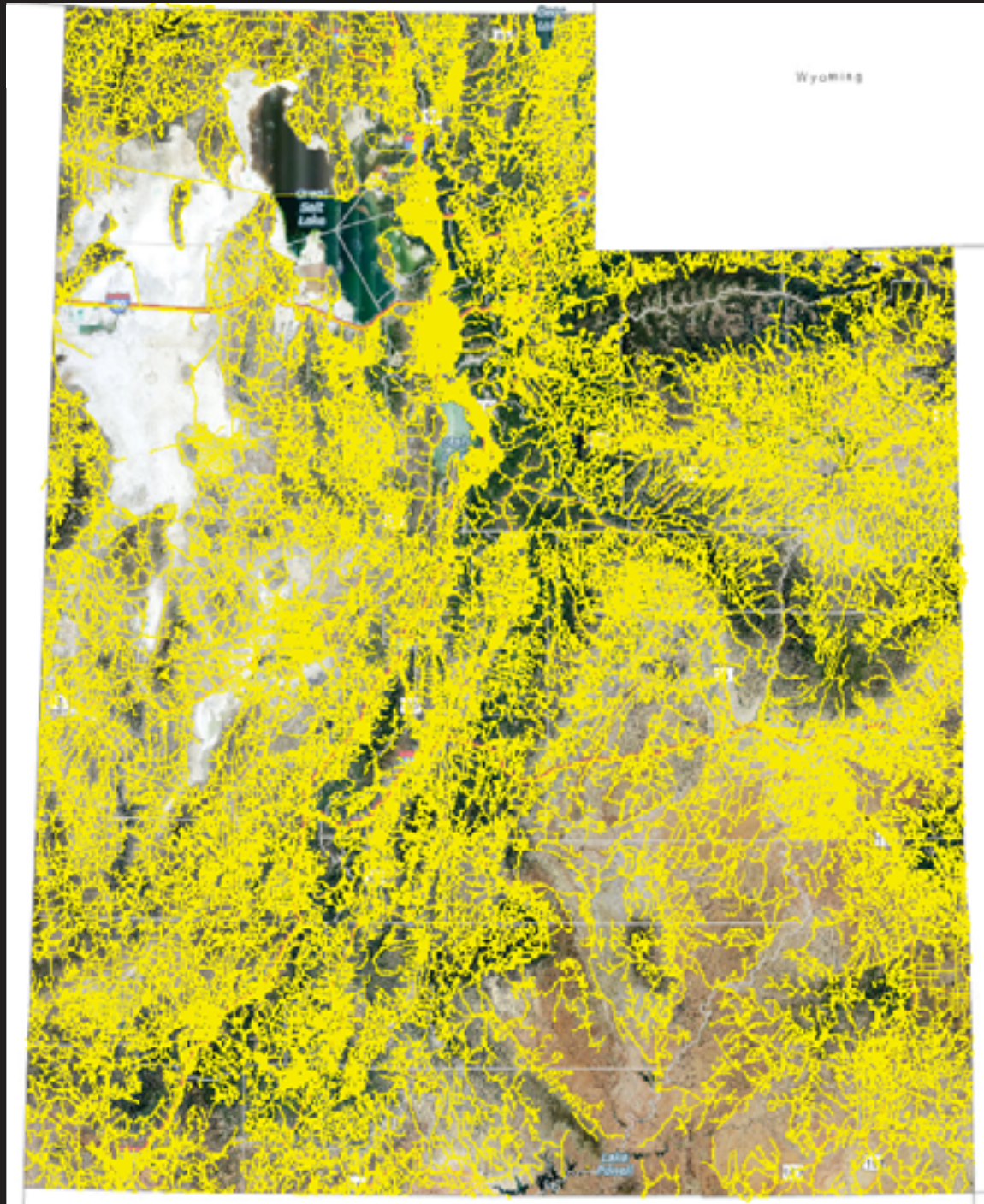
# Street Centerlines

- **387,000 features**

- connected at borders
- carry UDOT route inventory #s
- geocoding web services

- **Update cycle:**

- publish bimonthly
- county updates ~ every 6 months





### Contents

- Utah Public Safety Answering Point (PSAP 911) Locations
- Utah Public Safety Answering Point (PSAP 911) Boundaries
- Utah Address Points (map tile service)
- Utah Terrain Base Map (AGRC Map Tile Service)
- AGRC Default Map



<http://gis.utah.gov>



**Bert Granberg**  
**bgranberg@utah.gov**

**801 558 3563**



**UTAH AGRC**  
Automated Geographic Reference Center