

Esri Southwest User Conference

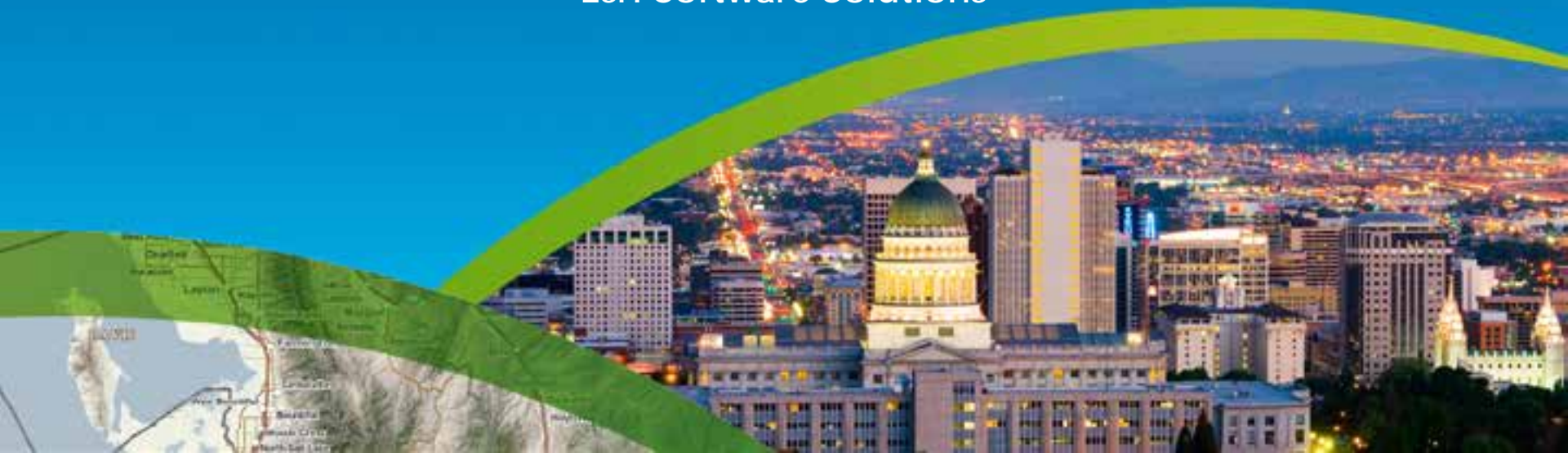
November 13–15, 2013 | Salt Lake City, Utah



Configuring ArcGIS for Local Government

Lindsay Thomas & Scott Oppmann

Esri Software Solutions



ArcGIS as a Platform

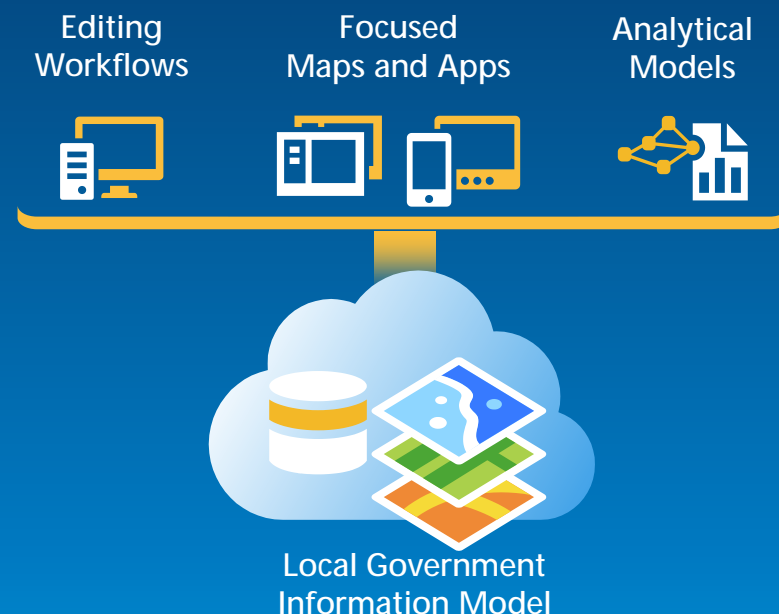


Transforming the Role of GIS

ArcGIS for Local Government

A solution for Esri's local government customers

- Series of useful maps and apps focused on local government work
 - Organized into modules
 - Extensible, configurable
 - Freely available and fully supported
 - A foundation for Partner solutions
- Community of users
 - Best Practices / Implementation Support
- Network of Esri Services and Partner offerings
 - Help users implement, sustain and enhance



.....Available on-premise or in the cloud

Our Mission

Help increase the value of GIS in local government organizations

- **Make it easier to deploy ArcGIS**
 - Deliver applications quickly throughout your organization
 - Stay current with future releases / avoid legacy technology
 - Create a platform of geospatial data that can be leveraged by many
- **Address common constraints in local government**
 - Size and skills of staff
 - Budget and time available to implement
- **Empower the community to contribute**
 - Users
 - Partners



Getting Started?

Getting Started ...

What are the influential factors for your deployment?

- **COTS and configurable solutions strategy**
 - **Deployment time**
 - **Technical expertise**
-
- **Where do you start?**
 - **With your business requirements**
 - **Align them with maps and apps**
 - **Review the system requirements of the map and apps**
 - **Review system configuration patterns**

ArcGIS for Local Government

Planning



- Park and Recreation Finder
- Land Use Public Comment
- Land Use Public Notification
- Community Planning
- Code Violation

Land Records



- Tax Parcel Editing
- Deed Drafter
- Tax Parcel Map Book
- Address Data Management
- Parcel Value for iPhone
- Tax Parcel Viewer
- Value Dashboard
- Community Addressing
- Data Reviewer for Parcels
- Data Reviewer for Addresses

Public Safety



- Flood Planning
- Special Event Planning
- Fire Station Wall Map
- Fire Run Book
- Pre-Incident Planning
- Target Hazard Analysis
- Fire Hydrant Inspection
- Cell Phone Analysis
- Public Safety COP
- Damage Assessment
- My Hazard Information
- EM Maps

Public Works



- Public Information Center
- Campus Editing
- Campus Place Finder
- Citizen Service Request
- SnowCOP
- My Government Services
- Water Utility Network Editing
- Water Utility Capital Planning
- Water Utility Mobile Map

Elections



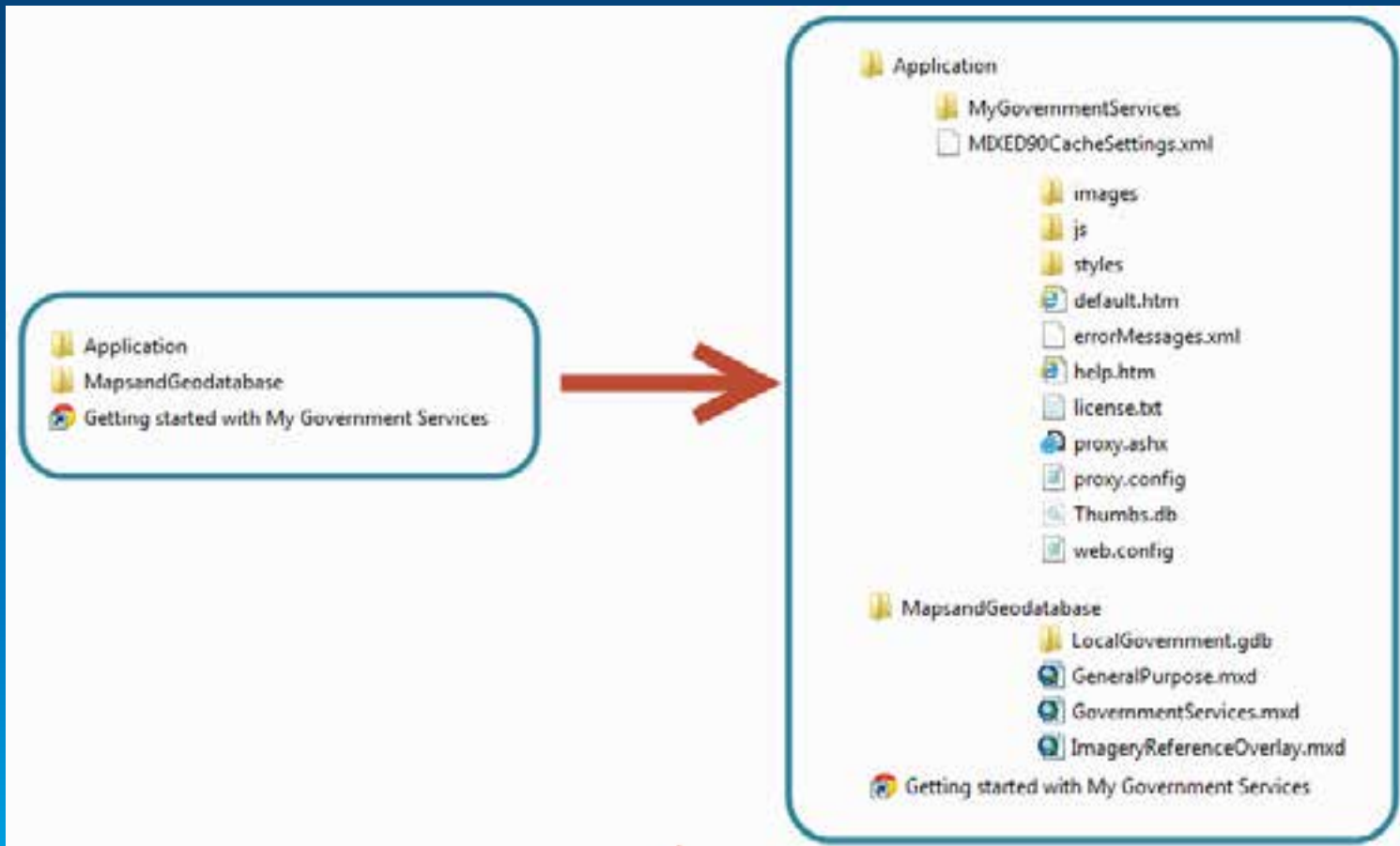
- Election Results
- Election Polling Places

Local Government



- Information Model
- Basemaps
- Data Reviewer for Basemaps
- Executive Dashboard
- Maps and Apps Gallery

Start with the example first...



Three Configuration Patterns

1. Complete system adoption
2. Publish and adopt
3. Sample code and customize

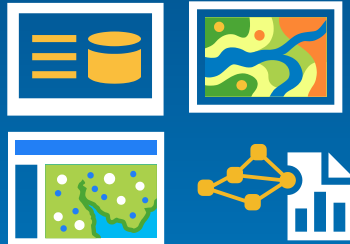
Complete System Adoption



Step 1: Organize your data

Configure GDB schema

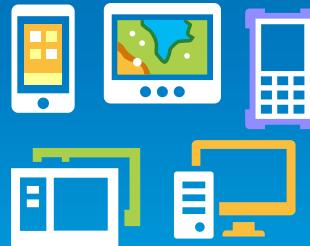
- Add fields, features
- Configure domains
- Set spatial reference
- Load source data



Step 2: Author the maps

Configure maps

- Adjust scale dependencies and def queries
- Validate label expressions
- Publish basemaps and map services



Step 3: Deploy the apps

Configure the desktop, mobile and web apps

- Add basemaps and map services
- Adjust extents
- Configure popups
- Deploy Add-ins and models

Publish and Adopt



Configure GDB schema

- Add fields, features
- Configure domains
- Set spatial reference

Step 1:

Create publication database

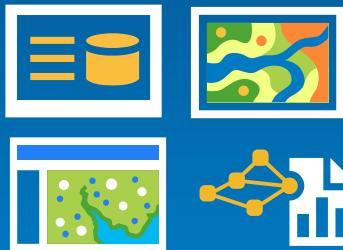


Create ETL Scripts

- Set source / target
- Schedule scripts
- Migrate production data

Step 2:

Load production data



Configure maps

- Adjust scale dependencies and def queries
- Validate label expressions
- Publish basemaps and map services

Step 3:

Author the maps



Configure the mobile and web apps

- Add basemaps and map services
- Adjust extents
- Configure popups

Step 4:

Deploy the apps

Supported by Esri Support Services

Sample Code and Customize

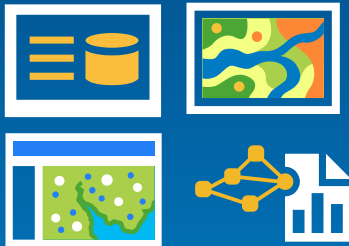


Configure your GDB schema

- Add fields, features

Step 1:

Use your GDB Schema

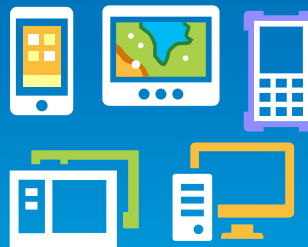


Step 2:

Repair the maps

Configure maps

- Repair map layers (source and symbology)
- Adjust scale dependencies and def queries
- Validate label expressions
- Publish basemaps and map services
- Or, just try to use your maps...



Step 3:

Customize the apps

Publish your own mobile and web apps

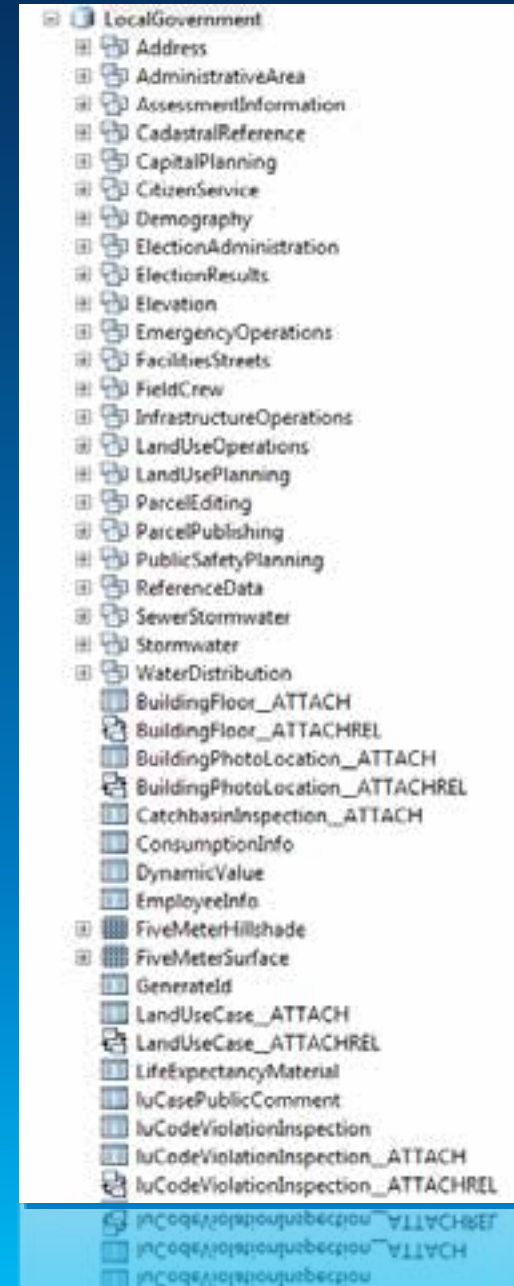
- Customize/re-compile the apps
- Add basemaps and map services
- Adjust extents
- Configure popups

The developer pattern

Configuring the Information Model

- **Supports maps and apps**
 - Known local government requirements
 - Easy to adopt and extend
- **Fully documented**
 - Features, layers and services
- **Central repository, organized around thematic content and logical permission model**
 - Organized access/maintenance patterns
- **Service catalog supports mobile / web apps**
- **Tip**
 - Xray for ArcCatalog and ArcMap

Start with the layer and field aliases and work from there....





Demo

Configuring the Information Model with Xray for Catalog

Configuring the Editing Maps

- **Anatomy of an Editing Map**
 - **Optimized MXD w/ Feature Templates**
 - **One or more Add-Ins**
 - **Custom toolbars and/or attribute assistant**
 - **Custom construction tools**
- **Examples**
 - **Tax Parcel Editing**
 - **Special Event Planning**
 - **Infrastructure Editing**
 - **Address Data Management**



Demo

Address Data Management

Configuration the Web Apps

- **Anatomy of the web apps**
 - Javascript / HTML 5 apps
 - ArcGIS Viewer for Flex configurations
 - REST, GP, and Geometry Services, Web Maps
- **Can be configured quickly using:**
 - CSS and using standard .js configuration file
- **Example**
 - Election Polling Place
 - My Government Services



Demo

Election Polling Place and My Government Services

Summary for Configuring

- **Identify the business needs of your organization**
- **Evaluate the state of your data holdings**
- **Select a configuration pattern that makes sense for your organization**
- **Configure quickly, customize if necessary**
- **Participate in the community**
 - **Join our Meetup Group**
- **Don't hesitate to ask for help from**
 - **Esri**
 - **Partners**
 - **Peers**



The Community

Local Government Community

An online community where Local Government users and partners can collaborate

ArcGIS for Local Government

solutions.arcgis.com/local-government

ArcGIS for Local Government PLATFORM FEATURES DOCUMENTATION SUPPORT esri

The Solution for Your Local Government

Leverage your geographic information and the ArcGIS Platform to improve government activities and enhance citizen services.

[TAKE A TOUR](#) [FOLLOW](#)

Get Started in Your Organization

Learn how ArcGIS for Local Government can transform your use of GIS, help you increase efficiency, and improve government services.

Deploy Focused Maps and Apps

Browse a collection of maps and apps that can be configured for knowledge workers in your organization and the citizens you serve.

Join the Community

Connect with your peers, Esri Partners, and the teams at Esri dedicated to helping you increase the value of GIS in your organization.

Land Records

Manage an accurate inventory of real property, analyze the value of land and associated improvements, describe who owns the land, and convey land use and zoning regulations.

Local Government Community

An ongoing dialog where you can share your success stories and learn from others

The screenshot shows a web browser window displaying the Meetup page for the "ArcGIS for Local Government" group. The browser's address bar shows the URL www.meetup.com/ArcGIS-for-Local-Government/. The Meetup logo and navigation links like "Find" and "Start" are visible at the top. The main header of the page reads "ArcGIS for Local Government". Below this, there are navigation tabs for "Home", "Members", "Sponsors", "Photos", "Pages", "Discussions", and "More".

The page is divided into three main columns:

- Left Column:** Features a globe icon and the group name "Redlands, CA", founded on Mar 9, 2012. It includes a "Browse Us" button, statistics for members (300), topics (12), upcoming meetings (3), and paid members (0). There is also a "We're about" section with a description of the group's focus on GIS and local government, and an "Organizers" section listing members like Thomas, Alton, and Scott.
- Middle Column:** Starts with a "Welcome!" message and a "SCHEDULE A NEW MEETUP" button. Below this is a discussion titled "Discuss Configuring the ArcGIS for Local Government Web Apps (Pacific)" scheduled for Wednesday, Oct 15, at 11:00 AM. The discussion includes a photo of attendees and a "PARTICIPATING" button. Below the discussion is another discussion titled "Configuring the Fire Wall Map and Fire Run Book (PST)" scheduled for Wednesday, Oct 30, at 11:00 AM, also with a "PARTICIPATING" button.
- Right Column:** Titled "What's new", it displays a list of recent discussions with thumbnail images and brief descriptions, such as "Scott Eisenhart Revised Fire Wall Map and Fire Run Book (PST)".

Local Government Community

There's a place where developers can contribute too

The screenshot shows a web browser window displaying the Esri GitHub repository page for 'Local Government'. The page features a large header image of a satellite map with a blue overlay. The main heading is 'Esri is on GitHub!' followed by a sub-heading: 'We're excited about helping developers build and share software. Browse our open source code and get started with our powerful ArcGIS platform.' Below this is an orange button labeled 'explore the Github'. A smaller text line reads 'Need an ArcGIS subscription? Start developing today for free.'

Below the header, there is a search bar with the text 'Filter by language or keyword' and a dropdown menu showing 'LOCAL GOVERNMENT'. The page displays a grid of six project cards, each with a title, language, description, and star count:

- map-and-app-gallery** (JavaScript): An application that provides citizens access to maps and apps developed by a local government and cataloged in ArcGIS.com. 7 stars.
- executive-dashboard** (JavaScript): An application that allows local government leaders to proactively view critical metrics, identify trends, and devise risk management strategies. 6 stars.
- local-government-online-apps** (JavaScript): Esri's ArcGIS for Local Government team's online applications. 5 stars.
- public-safety-cop** (ActionScript): A collection of Flex widgets used in the Public Safety COP application to provide a common operational picture of an incident. 5 stars.
- tax-parcel-viewer** (JavaScript): An application that provides the general public property tax and assessment information. 4 stars.
- local-government-desktop-addins** (C-Sharp): A series of ArcGIS Desktop Add-ins used in the ArcGIS for Local Government editing maps. 4 stars.



What's Next

Continuously Evolving Solution Offering

With the ArcGIS 10.2 Release

- ArcGIS for Local Government 10.2 Release
 - Update of 41 desktop, web and mobile maps and apps
- ArcGIS Model Organization
 - GIS/IT, Fire Department, Assessor's Office, Clerk/Registrar, Emergency Management and Water Utilities
- Fire Service maps and apps
 - Target Hazard Analysis, Fire Hydrant Inspection, Pre-Incident Planning
- Law Enforcement maps and apps
 - Cell Phone Analysis, Pre-Incident Planning
- Web application updates
 - Support for AGOL hosted services, smartphone support, new features

Post 10.2

- New Maps and Apps
 - Public Works
 - Law Enforcement
 - Economic Development
 - Land Records
- ArcGIS Online
 - Expanded model organization
 - Additional web application templates
- Continued Community Engagement
 - Meetups, videos, more help, etc.
 - Expanded partner and professional services offerings



Thank You



<http://solutions.arcgis.com>



<http://meetup.com/ArcGIS-for-Local-Government/>



@ArcGISLocalGov



<http://esri.github.com>



Understanding our world.