

# ESRI Southwest Users Conference

## Using ArcGIS Online to Better Serve a Tribal Community



Presented by:  
Wynette Arviso  
JJ Clacs & Company

November 14, 2013



# Presentation Outline

Mexican Water Chapter

Challenges

Community Involvement

Land Use Planning & GIS

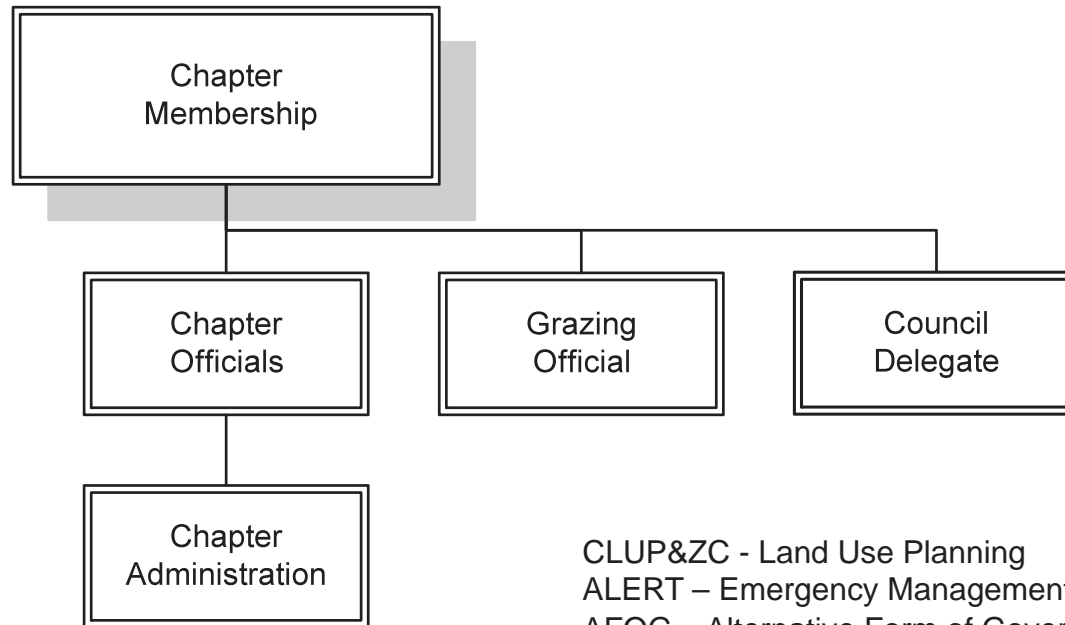
ArcGIS Online

Benefits



# Mexican Water Chapter





- CLUP&ZC - Land Use Planning
- ALERT – Emergency Management
- AFOG – Alternative Form of Government
- Economic Development
- Farm Board
- Veterans Organization
- Senior Council
- School Board
- Peacemaker

Mission: To support and foster responsive community services that embrace heritage, leadership, stewardship, and vitality.



# Land Use Planning Background

- 2006 Developed 1<sup>st</sup> land use plan using GIS
- 2007 LUP was approved and certified by the Navajo Nation
- 2012 New chapter house
- 2013 Update land use plan
- 2013 Develop a strategic plan



# Challenges

- Staff – 4
- Annual budget - \$280,000 per year
- Land base – over 300,000 acres
- No land phone lines
- No server
- Language - translation



# Community Involvement





# Land Use Planning and GIS







# Existing Data Sources

- Navajo Nation Land Department
- Navajo Department of Transportation
- Navajo Department of Water Resources
- Navajo Department of Fish and Wildlife
- Navajo Tribal Utility Authority
- Rocky Mountain Power
- USDA-NRCS
- U.S. Census 2000 & 2010



# THE NAVAJO NATION Mexican Water Chapter



Environmentally Sensitive Areas



Future Land Use Plan



Grazing Districts



Navajo Nation Wind

Mexican Water Chapter, one of 110 chapters on the Navajo Nation, is a traditional Navajo community spanning Arizona and Utah.



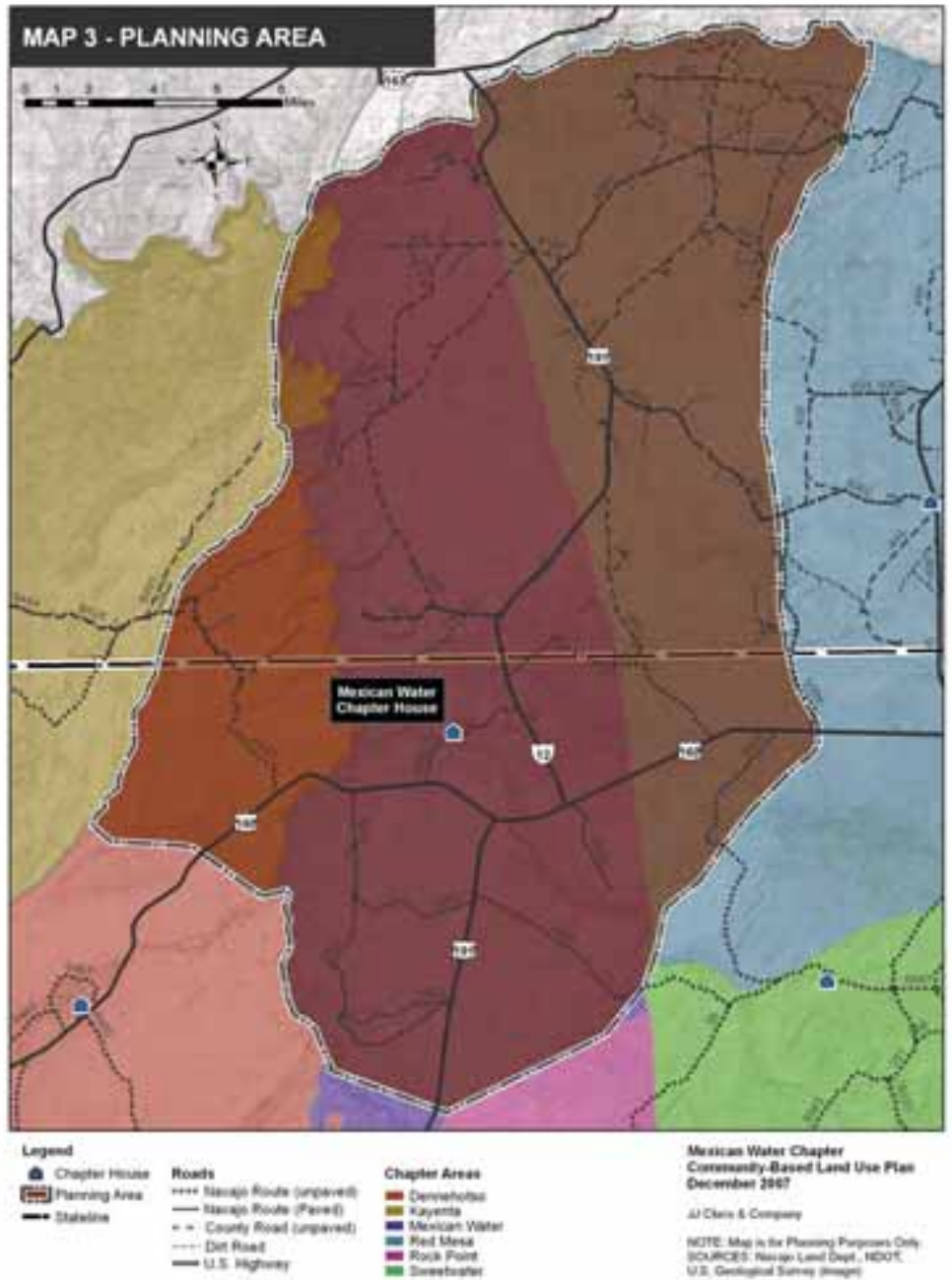
# THE NAVAJO NATION **Mexican Water** Chapter



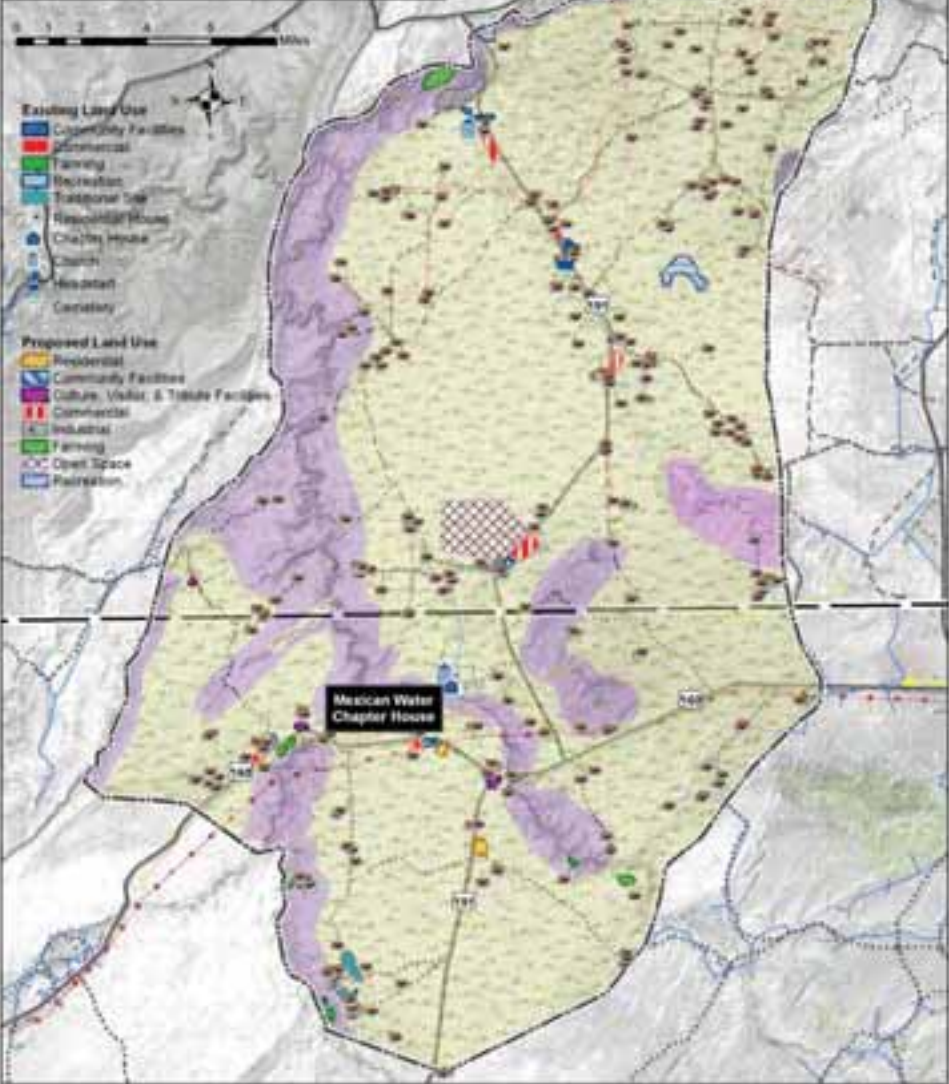
Planning Area



Mexican Water Chapter, one of 110 chapters on the Navajo Nation, is a traditional Navajo community spanning Arizona and Utah.



**MAP 18 - FUTURE LAND USE PLAN**



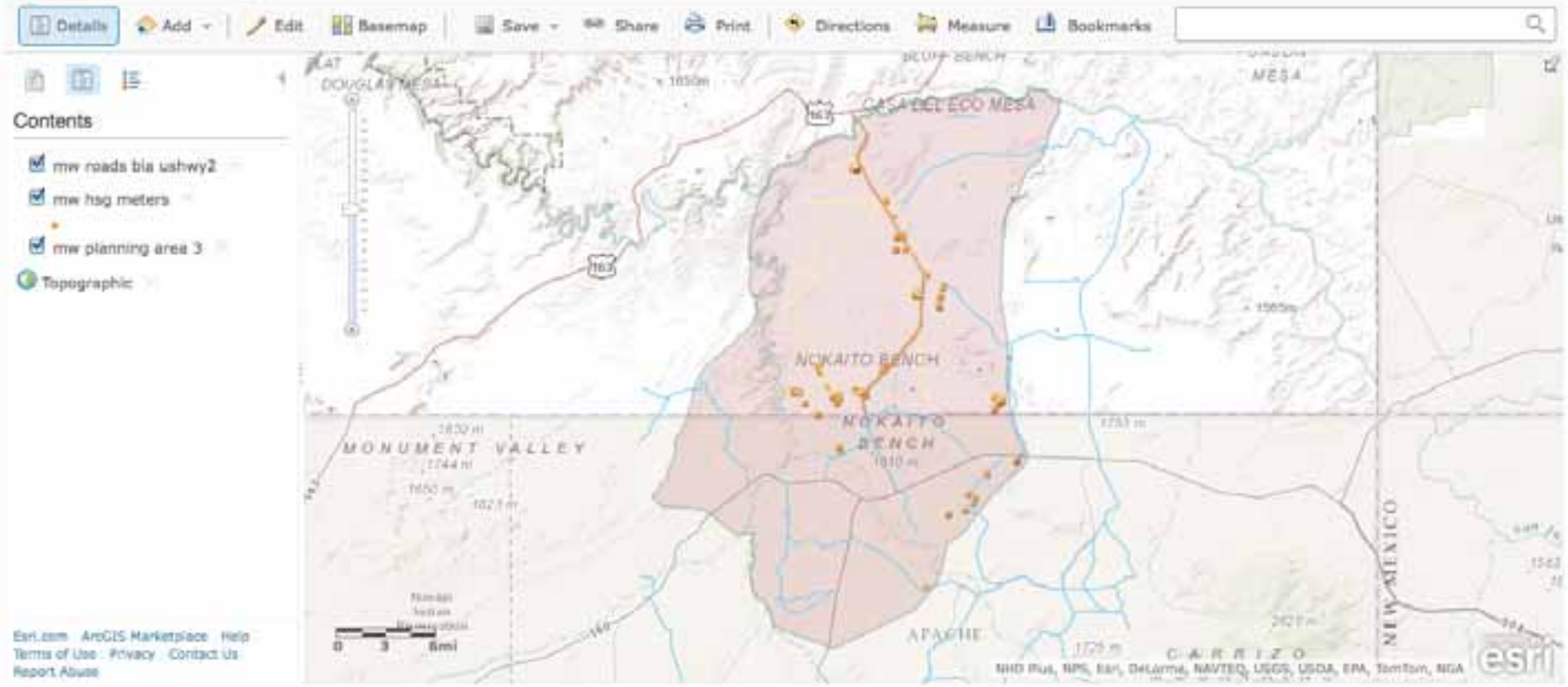
**Legend**

- |                  |                        |                         |
|------------------|------------------------|-------------------------|
| Planning Area    | Navajo Route (unpaved) | Quester Pipeline        |
| State/line       | Navajo Route (Paved)   | Power Transmission Line |
| <b>Utilities</b> | County Road (unpaved)  |                         |
| Electric         | Dirt Road              |                         |
| Water            | U.S. Highway           |                         |
| Natural Gas      |                        |                         |

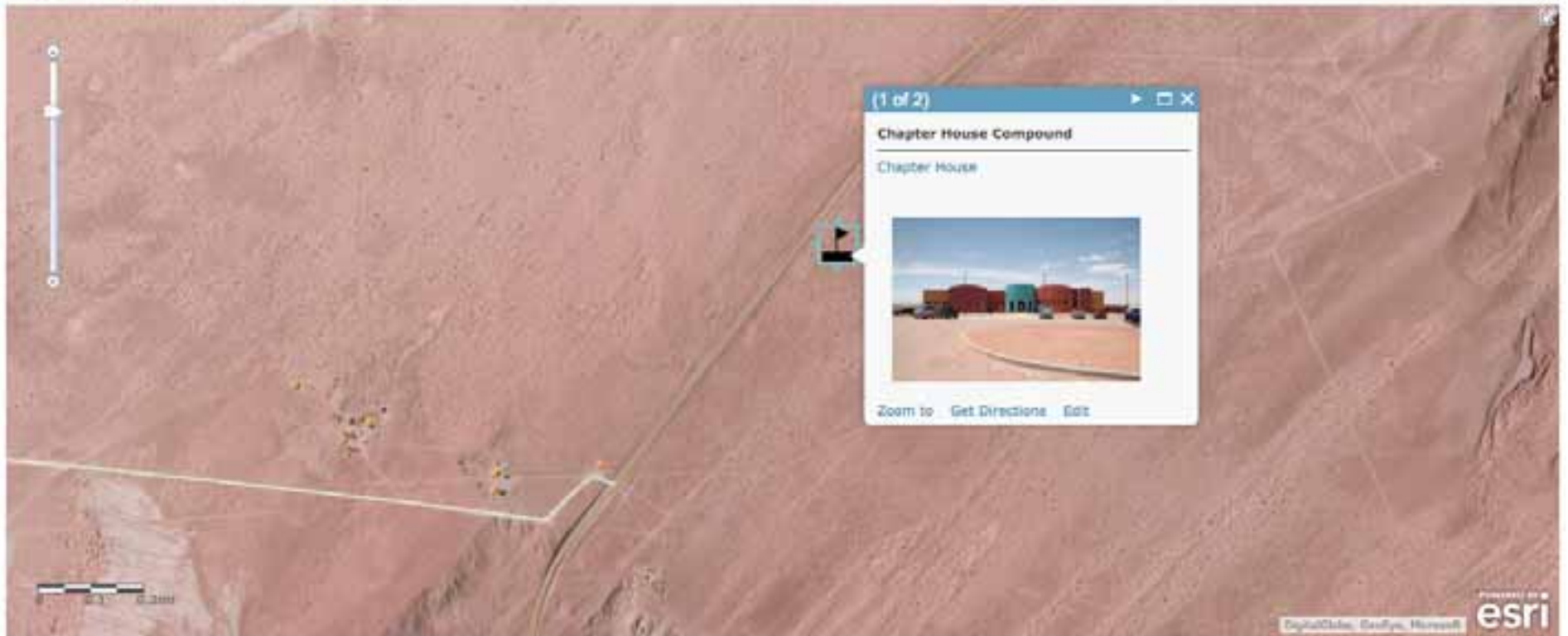
**Mexican Water Chapter  
Community-Based Land Use Plan  
December 2007**

JJ Clark & Company

NOTE: Map is for Planning Purposes Only  
SOURCES: Navajo Land Dept. - NDDT,  
U.S. Geological Survey (Images)









# Chart linked to Navajo Wind System

**INFRASTRUCTURE CAPITAL IMPROVEMENT PLAN FY 2015 - 2020**  
**Mexican Water Chapter**

**ICIP Capital Project Description**

Project Title: Construction of 2nd Phase of Multipurpose Complex - Senior Center

Project Description: Phase 1 - Multipurpose Complex - Chapter Administration Office  
 Phase 2 - Multipurpose Complex - Senior Center/Wellness Center  
 Phase 3 - Media/Library and Recreation Complex

Statement of Need:

Location of Project: Hwy 191 MP #2 San Juan County, UT

Project Ranking: 2015 - 1 Subcode:

Potential Future Funding Sources: AML, NN CIP General Funds, State Other, UNTRF

**Estimated Costs Not Yet Funded**

	2015	2016	2017	2018	2019	2020	TOTAL NOT YET FUNDED
Land	\$0	\$0	\$0	\$0	\$0	\$0	\$55,000
Planning / Pre-design	\$0	\$0	\$0	\$0	\$0	\$0	\$15,000
Architecture / Engineering	\$0	\$0	\$0	\$0	\$0	\$0	\$93,000
Construction	\$2,200,000	\$0	\$0	\$0	\$0	\$0	\$2,200,000
Other	\$0	\$0	\$0	\$0	\$0	\$0	\$0
<b>TOTAL NOT FUNDED</b>	<b>\$2,200,000</b>	<b>\$0</b>	<b>\$0</b>	<b>\$0</b>	<b>\$0</b>	<b>\$0</b>	<b>\$2,363,000</b>
Operating Revenues	\$0	\$0	\$0	\$0	\$0	\$0	\$0
Oper/Maint	\$0	\$0	\$0	\$0	\$0	\$0	\$0



# Benefits

- Incorporate technology – ArcGIS, satellite internet, cellular
- Interface with other systems
- Facilitate better planning and analysis
- Immediate and effective communication
- Community involvement
- Leads to other projects: e.g. solid waste management; economic development
- Retain Navajo heritage and culture